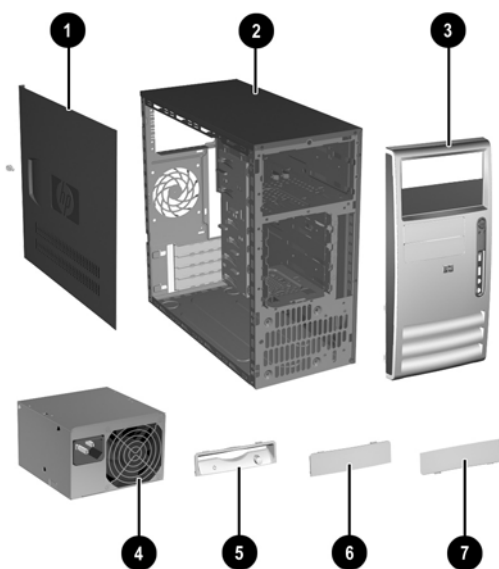


HP Compaq Business PC dx7200 Series Personal Computer

Illustrated Parts Map
Microtower



System Unit

1	Access panel	395969-001
2	Chassis	not spared
3	Front Bezel with 5.25" ODD bezel blank and lower 3.5" bezel blank	368085-001
4	Power supply, PFC, 300 W	385941-001
5	Diskette drive bezel	372448-001
6	3.5" bezel blank, top bay	335938-005
7	3.5" bezel blank, lower (spared with 368085-001)	see 3, above
*	5.25" bezel blank	335937-005

*Not shown

Mass Storage Devices (not illustrated)

40 GB\7200 RPM SATA hard drive (1.5 Gb/s)	365555-001
80 GB\7200 RPM SATA hard drive (3.0 Gb/s)	391945-001
160 GB\7200 RPM SATA hard drive (3.0 Gb/s)	391741-001
250 GB\7200 RPM SATA hard drive (3.0 Gb/s)	391937-001
Diskette drive with mounting screws	392415-001
48X CD-ROM drive with mounting screws	326773-005
52X CD-ROM drive	333969-005
48X/32X/48X CD-RW	395272-001
48X/32X/48X +16X DVD/CD-RW	359493-005
16X DVD+-RW with LightScribe (DL/DF)	390882-001
16/48X DVD-ROM drive	391946-001

© 2005 Hewlett-Packard Development Company, L.P.

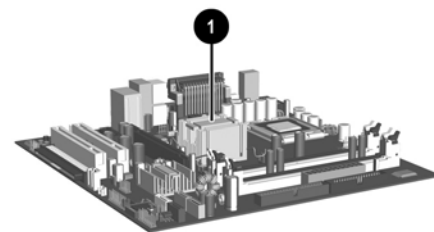
HP and the HP logo are trademarks of Hewlett-Packard Development Company, L.P.

All other product names mentioned herein may be trademarks of their respective companies.

HP shall not be liable for technical or editorial errors or omissions contained herein. The information in this document is provided "as is" without warranty of any kind and is subject to change without notice. The warranties for HP products are set forth in the express limited warranty statements accompanying such products. **Nothing herein should be construed as constituting an additional warranty.**

1st Edition, September 2005

Document Number
390810-001



Standard and Optional Boards

1	System board with alcohol pad and thermal grease	395430-001
Memory Modules		
*	256 MB/533 MHz FSB	393392-001
*	512 MB/533 MHz FSB	393393-001
*	1.0 GB/533 MHz FSB	393394-001
*	512 MB/667 MHz FSB	396520-001
*	1.0 GB/667 MHz FSB	398038-001
Intel Pentium 4 Processors with alcohol pad and thermal grease		
*	2.8 GHz\800 MHz FSB, 1MB cache, 521	394643-001
*	3.0 GHz\800 MHz FSB, 1MB cache, 531	394642-001
*	3.2 GHz\800 MHz FSB, 1MB cache, 541	394812-001
*	3.0 GHz\800 MHz FSB, 2MB cache, 630	392273-001
*	3.2 GHz\800 MHz FSB, 2MB cache, 640	384786-005
*	3.4 GHz\800 MHz FSB, 2MB cache, 650	384787-005
Intel Pentium D Processors with alcohol pad and thermal grease		
*	2.8 GHz\800 MHz FSB, 2x1MB cache, 820	392419-001
Intel Celeron D Processors with alcohol pad and thermal grease		
*	2.66 GHz\533 MHz FSB, 256KB cache, 331	391940-001
*	2.8 GHz\533 MHz FSB, 256KB cache, 336	391941-001
Other Cards		
*	PCI Modem, International, FH bracket	361286-021
*	PCI Modem, V92, FH bracket	383050-001
*	Intel Pro/1000 NIC	314901-005
*	FireWire 1394 card, 2 ext/1 int port, FH bracket	361552-001
Graphics Solutions		
*	ATI PCI-E DVI/S-Video graphics, 128 MB	361266-001
*	Quadro NVS 280 PCI graphics, 64 MB	351384-005
*	Quadro NVS 280 PCI-E graphics, 64 MB	365934-001
*	DVI ADD 2 graphics card	361265-001
*	PCI DVI/S-Video graphics, 64 MB	382667-001
*	PCI-E DVI/S-Video graphics, 128 MB	398332-001
*	DVI SDVO graphics card	398333-001

*Not shown

FH = Full height mounting bracket

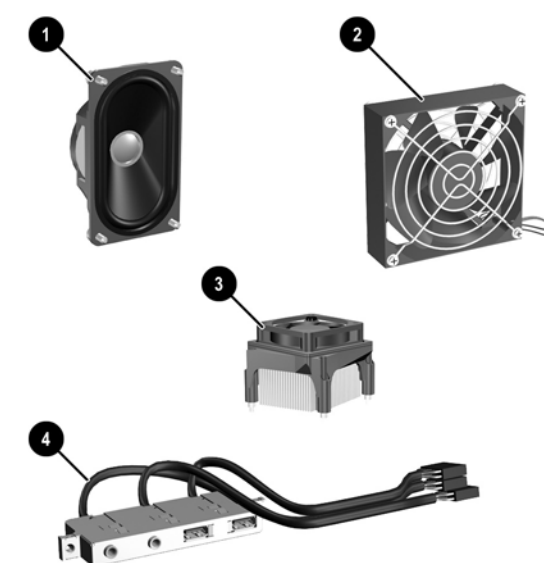
Cables

1	SATA Hard drive cable, 13 inches	391738-001
2	IDE UATA dual device, Optical Disk Drive data cable, 14 inches	395964-001
3	Diskette drive cable	395967-001
*	Power/LED cable with switch holder	395965-001
*	RJ-11 telephone cable (use with 361286-021)	198220-005
*	Telephone modular 6-position adapter and cable assembly (Australia)	304398-015
*	DMS-59 to dual dongle cable	339257-005

*Not shown

Keyboards (not illustrated)

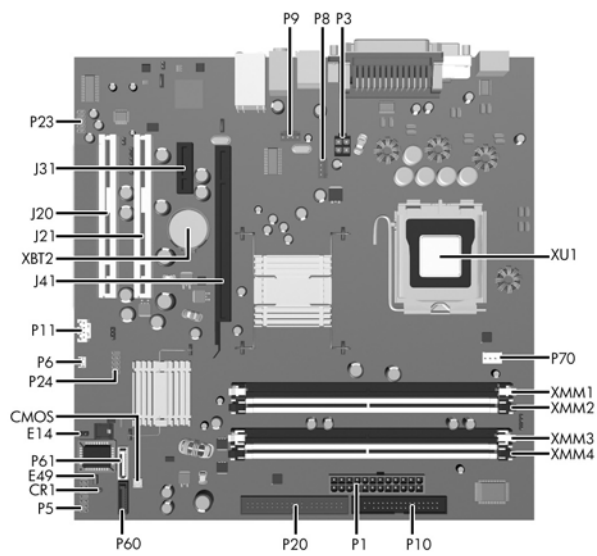
PS/2, Basic		382925-xxx	
USB, Basic		382926-xxx	
USB, Smart Card		393670-xxx	
International	-B31	PRC	-AA1
Japanese	-291	Taiwanese	-AB1
Korean (Hanguel)	-AD1	Thai	-281



Miscellaneous Parts

1	Speaker	392413-001
2	Chassis fan	392412-001
3	Heatsink with fan, alcohol pad, and thermal grease	382026-001
4	Front I/O device with cable	395966-001
*	Real-time clock battery	153099-001
*	Drive Key II, 256 MB	372889-001
*	Kensington cable lock	370856-001
*	Rubber feet (4 ea)	336445-001
*	Port control	367861-001
*	DVI to VGA adapter	202997-005
Mouse		
*	Mouse, 2-Button, PS/2 with scroll wheel	390937-001
*	Mouse, 2-Button, USB, optical with scroll wheel	390938-001
*	Mouse, 2-Button, USB, with scroll wheel	323615-005
Miscellaneous screw kit, includes:		
*	M3 x 5mm Full slot Hi top, taptite (4 ea)	
*	#6-32 x 1/4 Hi top, taptite (4 ea)	
*	#6-32 x 5/16 Hi top, taptite (2 ea)	
*	#6-32 x 3/16 Hi top, taptite (4 ea)	
*	#6-32 x 3/8 Tap tite with washer (1 ea)	
*	#6-32 x 1/4 Thumbscrew (1 ea)	
*	Countersunk, flat head/phillips plastite (4 ea)	

*Not shown



System Board Connectors and Jumpers (position of some untitled components may vary in location)

CMOS	CMOS button	P10	Diskette drive
CR1	5V_AUX LED	P11	Aux audio in
E14	Boot block	P20	Primary IDE
E49	Password jumper	P23	Front audio
J20	PCI slot 1	P24	Front panel USB
J21	PCI slot 2	P60	Primary Serial ATA (SATA) Port connector
J31	PCI Express slot x1	P61	Secondary Serial ATA (SATA) Port connector
J41	PCI Express slot x16	P70	CPU fan
P1	Main power (24 pin)	XBT2	Battery
P3	Processor 12V header	XMM1	Memory socket
P5	Front panel	XMM2	Memory socket
P6	Internal chassis speaker	XMM3	Memory socket
P8	Chassis fan	XMM4	Memory socket
P9	Secondary chassis fan	XU1	Microprocessor socket

System Hardware Interrupts

IRQ	System Function	IRQ	System Function
0	Timer Interrupt	8	Real-Time Clock
1	Keyboard	9	Unused
2	Interrupt Controller Cascade	10	Unused, available for PCI
3	Serial Port (COM B)	11	Unused, available for PCI
4	Serial Port (COM A)	12	Mouse
5	Unused, available for PCI	13	Coprocessor
6	Diskette Drive	14	Primary ATA (IDE) Controller
7	Parallel Port (LPT 1)		

Computer Diagnostic LEDs (on front of computer)

LED	Color	LED/Beep Activity	State/Message
Power	Green	On	(S0) Computer on
Power	Green	1 blink every 2 seconds	(S1) Suspend Mode
Power	Green	1 blink every 2 seconds	(S3) Suspend to RAM
Power	Clear	Off	(S4) Hibernation Mode
Power	Clear	Off	(S5) Computer off
Power	Red*	2 blinks 1 second apart	CPU thermal shutdown
Power	Red*	3 blinks 1 second apart	CPU not installed
Power	Red*	4 blinks 1 second apart	Power supply overload (crow bar)
Power	Red*	5 blinks 1 second apart	Defective or missing memory
Power	Red*	6 blinks 1 second apart	Defective or missing graphics
Power	Red*	7 blinks 1 second apart	System board failure (detected prior to video)
Power	Red*	8 blinks 1 second apart	Invalid ROM based on checksum
Power	Red*	9 blinks 1 second apart	System not fetching code
Power	Red*	10 blinks 1 second apart	System hang while loading an option ROM
Hard Drive	Green	Blinking	Hard drive activity

*Blinking codes are repeated after a 2 second pause. Beeps stop after fifth iteration but LEDs continue until problem is resolved.

Clearing CMOS

The computer's configuration (CMOS) may occasionally be corrupted. If it is, it is necessary to clear the CMOS memory using switch SW50.

To clear and reset the configuration, perform the following procedure:

1. Turn off the computer and any external devices, and disconnect the power cord from the power outlet.

CAUTION: The power cord must be disconnected from the power source before pushing the Clear CMOS Button (NOTE: All LEDs on the board should be OFF). Failure to do so may damage the system board.

2. Remove the access panel.
3. Press the CMOS button located on the system board.
4. Replace the access panel.
5. Turn the computer on and run Computer Setup (F10 Setup Utility) to reconfigure the system.

Disabling or Clearing the Power-On and Setup Passwords

1. Turn off the computer and any external devices, and disconnect the power cord from the power outlet.
2. Remove the access panel.
3. Locate the header and jumper labeled E49.
4. Remove the jumper from pins 1 and 2. Place the jumper over pin 2 only, in order to avoid losing it.
5. Replace the access panel.
6. Plug in the computer and turn on power. Allow the operating system to start.
NOTE: Placing the jumper on pin 2 clears the current passwords and disables the password features.
7. To re-enable the password features, repeat steps 1-3, then replace the jumper on pins 1 and 2.
8. Repeat steps 5-6, then establish new passwords.

Refer to the *Desktop Management Guide* and the *Computer Setup (F10) Utility Guide* for instructions on establishing new passwords.

Computer Setup (F10) Utility Features (not all features may be available)

File	System Information About Set Time and date	Flash system ROM Replicated Setup Default Setup	Apply Defaults and Exit Ignore Changes and Exit Save Changes and Exit
Storage	Device Configuration Storage Options	DPS Self-Test Boot Order	
Security	Smart Card Options Setup Password Power-On Password Password Options	Smart Cover Embedded Security Device Security Network Service Boot	System IDs Drivelock Security OS Security Data Execution Prevention
Power	OS Power Management	Hardware Power Management	Thermal
Advanced	Power-On Options Execute Memory Test BIOS Power On	Onboard Devices PCI Devices PCI VGA Configuration	Bus Options Device Options

Note: See the *Computer Setup (F10) Utility Guide on the Documentation and Diagnostics CD*.