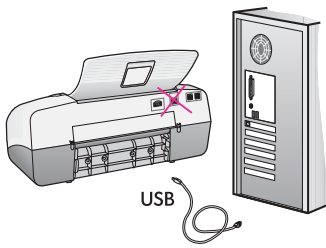


Start Here

1

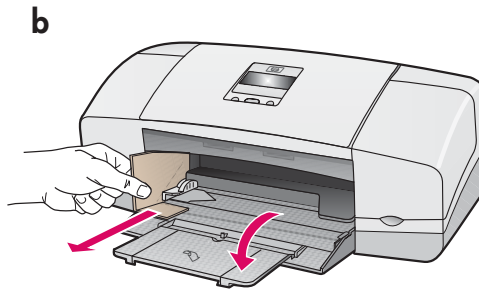
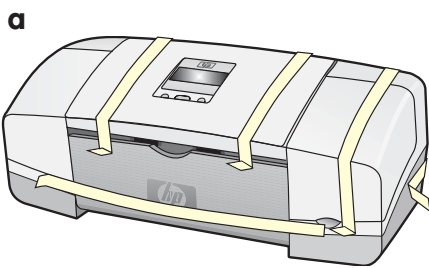


IMPORTANT: To ensure that the software is installed correctly, do not connect the USB cable until step 17.

Follow the steps in order. If you have problems during setup, see **Troubleshooting** in the last section. Your device might be different from the illustrations in this guide.

2

Remove tape and cardboard



Make sure to remove all tape and cardboard on the inside of the device.

3

Locate components



Windows CD



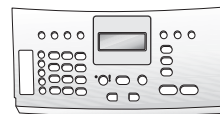
Mac CD



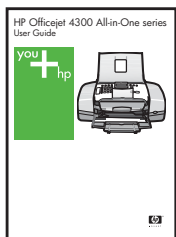
print cartridges



phone cord



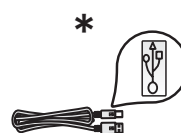
control panel faceplate
(may be attached)



User Guide



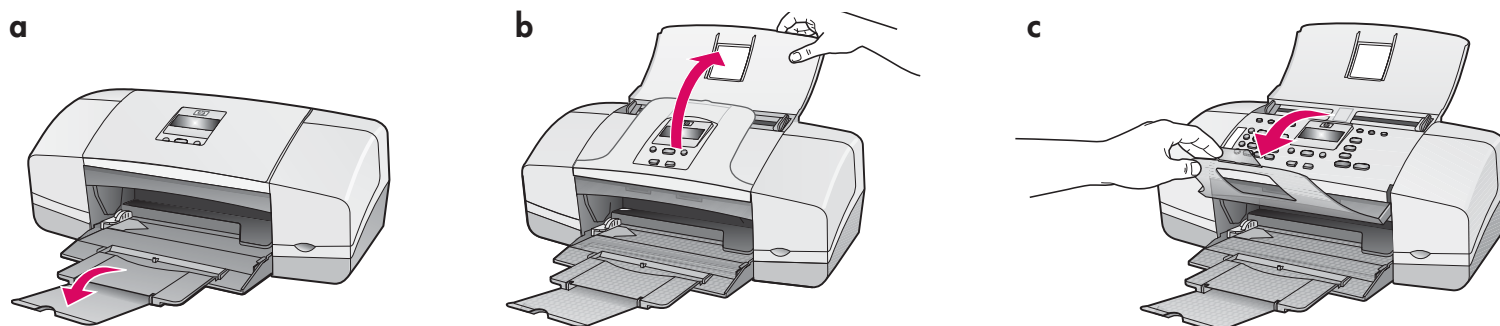
power cord
and adapter



*Purchased separately.
The contents of your box
may differ.

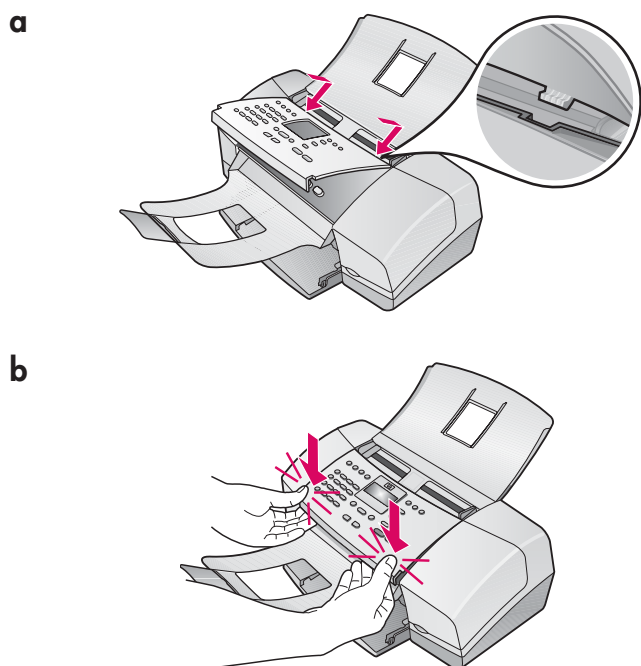
4

Unfold paper trays



5

Attach the control panel faceplate (if not attached)



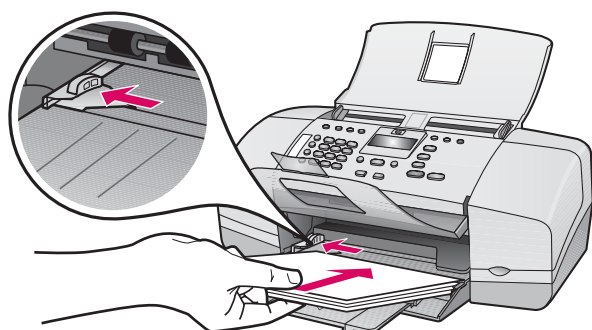
- a Fit the faceplate **tabs** into the **slots** on top of the device.
- b Rotate the faceplate down. Then **firmly press** down on the **front corners** until they both **snap into place**.

IMPORTANT: Make sure that all edges are even with the device, and that all buttons come through the holes in the faceplate.

The control panel faceplate must be attached for the HP All-in-One to work!

6

Load paper

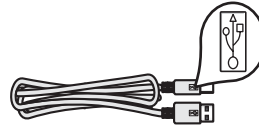
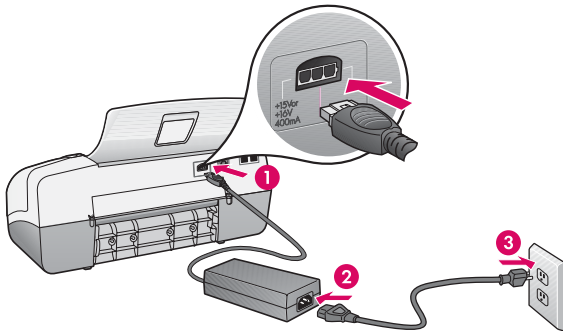


Load plain white paper into the bottom tray.

Do not force paper too far into the input tray, or it might cause a paper jam.

7

Connect the power cord and adapter

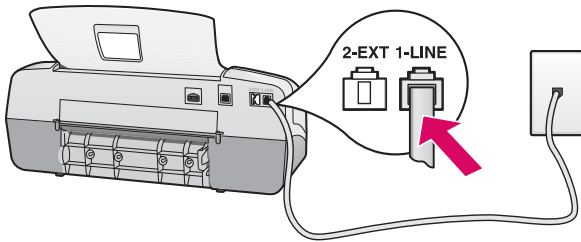


IMPORTANT: To ensure that the software is installed correctly, do not connect the USB cable until step 17.

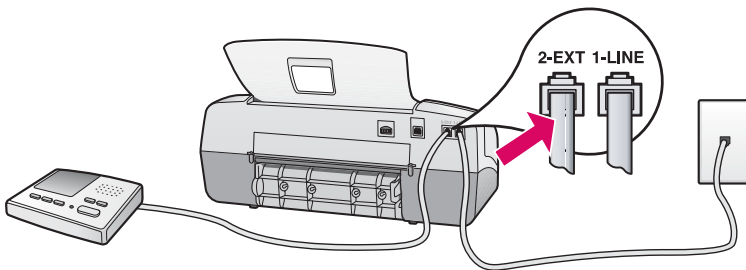
8

Connect the supplied phone cord

a



b



a (1-LINE)

Connect one end of the supplied phone cord to the phone port (1-LINE) and the other to a wall jack.

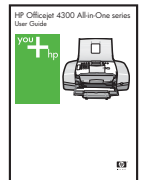
b (2-EXT)

Follow the step below if you want to connect your phone/answering machine to the HP All-in-One.

Remove the plug from the (2-EXT) port, and then plug your phone or answering machine cord into the port. See the User Guide for additional fax setup information.

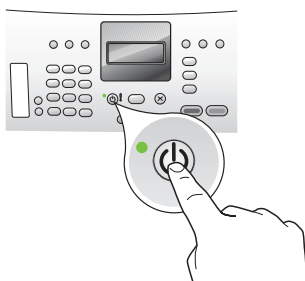
See the User Guide if you want to use your own phone cord or if you have any of these features:

- DSL
- VoIP/FoIP
- ISDN
- Voice mail
- Distinctive ring



9

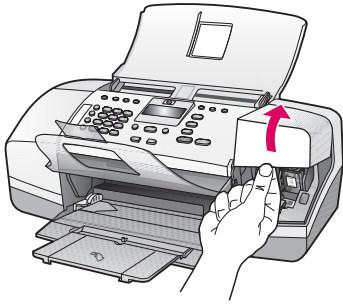
Press the On button



After you press the **On** button, wait for the print cartridge prompt before continuing.

10

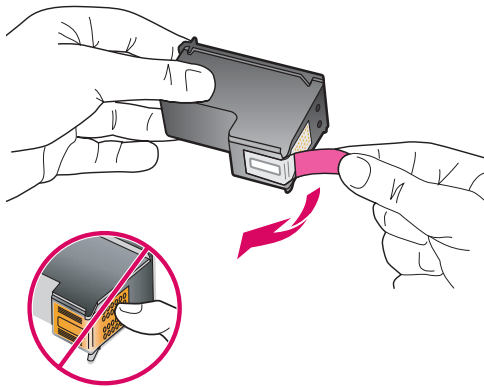
Open the print cartridge door



Lift the print cartridge door. The print carriage moves to the right side.

11

Remove tape from both cartridges

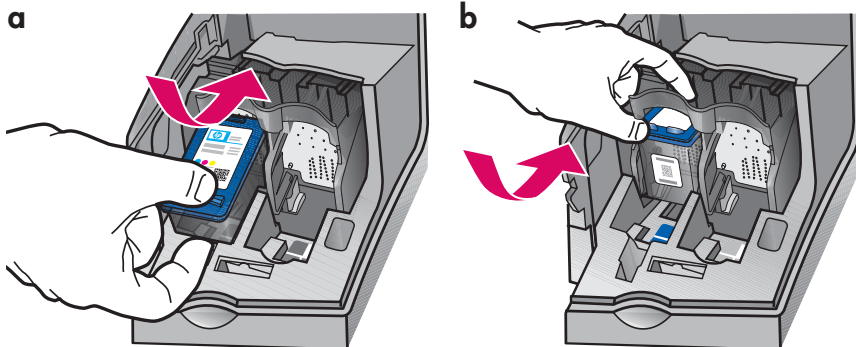


Pull the tab to remove the tape from **both** print cartridges.

IMPORTANT: Do not touch copper-colored contacts or retape the cartridges.

12

Insert the tri-color print cartridge

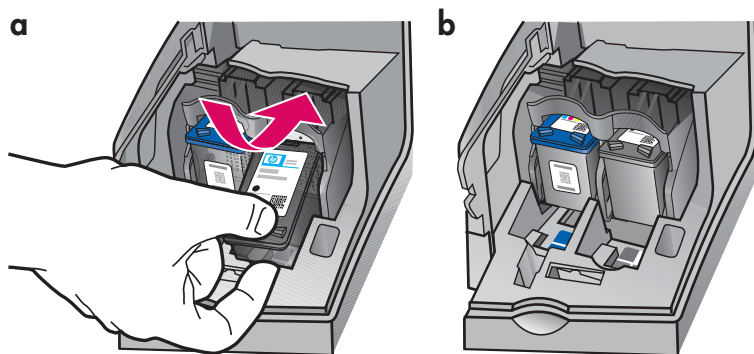


CAUTION: The device must be **On** before you can insert the print cartridges.

- a Slide the **tri-color** print cartridge into the **left** slot as shown.
- b Push the top part of the cartridge firmly **up** and **into** the slot until it **snaps** into place.

13

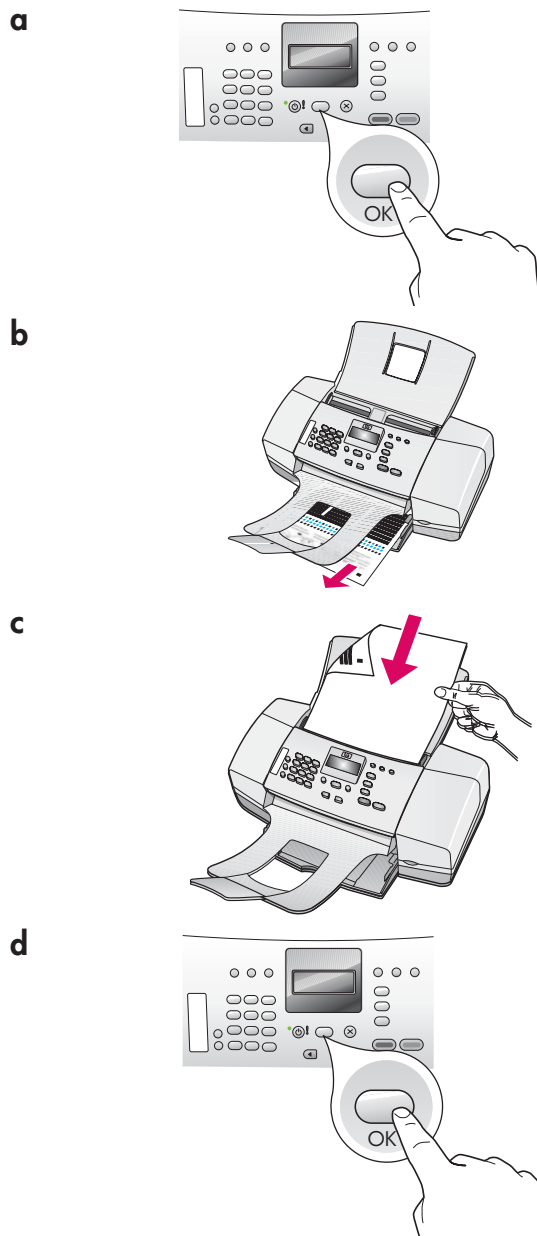
Insert the black print cartridge



- a Slide the **black** print cartridge into the **right** slot.
- b Push the top part of the cartridge firmly **up** and **into** the slot until it **snaps** into place.
- c Make sure both cartridges are secure. Close the print cartridge door.

14

Align the print cartridges



- a Press **OK** to print the alignment page. (Make sure you have loaded plain white paper in the bottom tray).
- b Remove the alignment page from the output tray.
- c Place the alignment page face down into the document feeder as shown in diagram c.
- d Press **OK** to scan the alignment page.
After the page has scanned, alignment is complete.

Turn on your computer



- a Turn on your computer, login if necessary, and then wait for the desktop to appear.
- b Close any open programs.

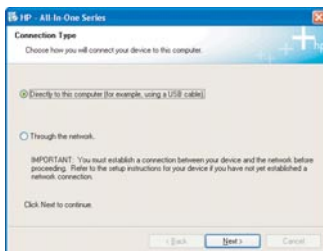
Insert the correct CD

Windows Users:



- a Insert the green HP All-in-One **Windows** CD.
- b Follow the onscreen instructions to install the software.
- c On the **Connection Type** screen, make sure to select **directly to this computer**. Continue to the next page.

NOTE: If the startup screen does not appear, double-click **My Computer**, double-click the **CD-ROM** icon, and then double-click **setup.exe**.



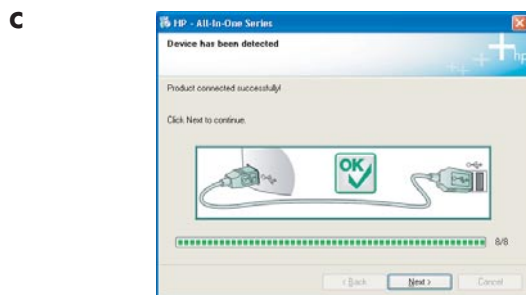
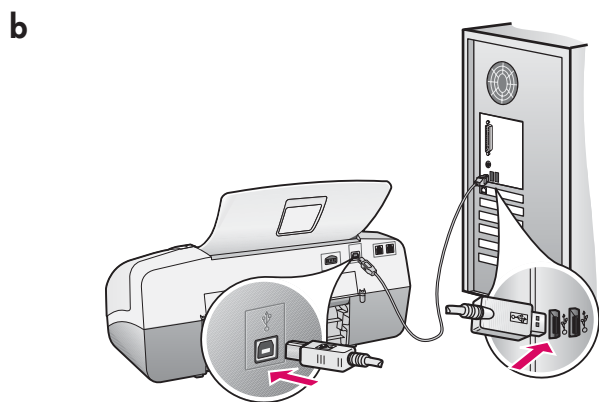
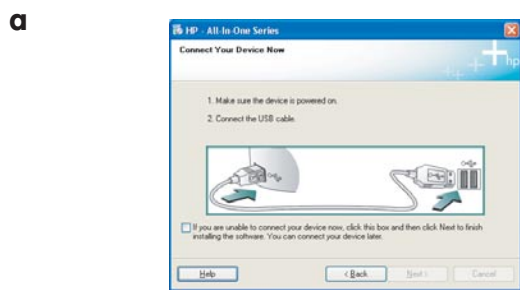
Mac Users:



- a Insert the **gray** HP All-in-One Mac CD.
- b Continue to the next page.

Windows Users:

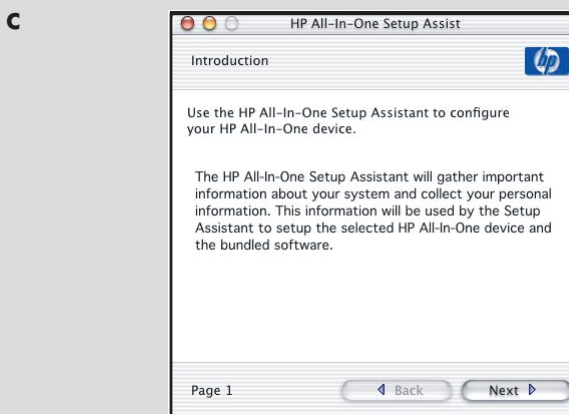
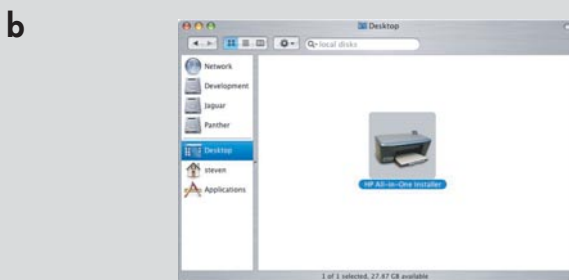
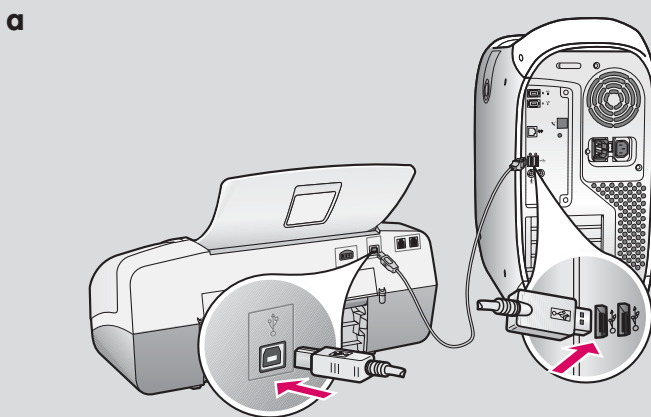
- Follow the onscreen instructions until you see the prompt to connect the USB cable. (This may take several minutes).
- Once the prompt appears, connect the USB cable to the port on the back of the HP All-in-One, and then to **any USB port** on your computer.
- Follow the onscreen instructions. Complete the **Fax Setup Wizard** and **Sign Up Now** screens. After you complete software installation, you are finished.

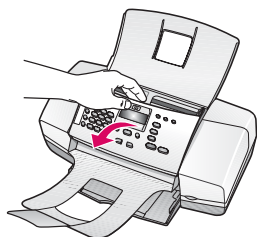


If you do not see this screen, see **Troubleshooting** in the last section.

Mac Users:

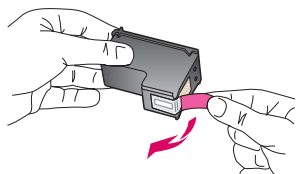
- Connect the USB cable from your computer to the USB port on the back of the device.
- Insert the HP All-in-One CD. Double-click the **HP All-in-One Installer** icon.
- Make sure you complete all screens, including the Setup Assistant.





Problem: The **paper jam** message appears on the display.

Action: Lift the control panel and gently remove any jammed paper. Make sure that you removed all packaging tape. After you have cleared the jam, make sure you press the control panel back into place. You may also need to remove any jammed paper from the rear access door or from inside the device.



Problem: The **Remove and check print cartridges** message appears after you insert print cartridges.

Action: Remove print cartridges. Make sure you remove all tape from the copper contacts. Re-insert the cartridges, and then close the print cartridge door.



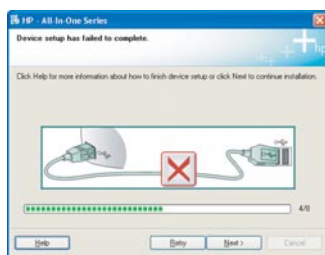
Problem: (Windows only) You did not see the screen telling you when to connect the USB cable.

Action: Remove and then re-insert the HP All-in-One **Windows** CD. Refer to Step 16.



Problem: (Windows only) The Microsoft **Add Hardware** screen appears.

Action: Click **Cancel**. Unplug the USB cable, and then insert the HP All-in-One **Windows** CD. Refer to Steps 16 and 17.



Problem: (Windows only) The **Device Setup Has Failed To Complete** screen appears.

Action: Verify that the control panel faceplate is firmly attached. Unplug the device and plug it in again. Check all connections. Make sure the USB cable is plugged into the computer. Do not plug the USB cable into a keyboard or non-powered hub. Refer to Steps 5 and 17.



To access the HP Photosmart Software help on a Windows computer:

- 1 In the HP Solution Center, click the tab for your HP All-in-One.
- 2 In the Device Support area, click Onscreen Guide or Troubleshooting.

To access the HP Photosmart Software Help on a Mac:

- 1 From the Finder Help menu, choose Mac Help.
- 2 From the Help Viewer Library menu, choose HP Photosmart Mac Help.