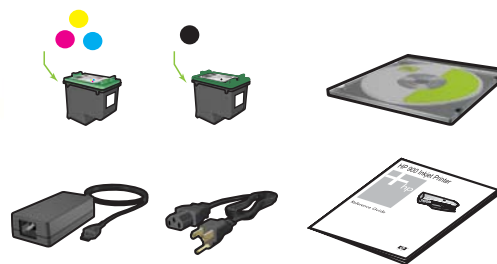
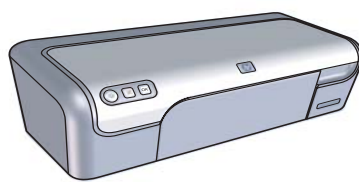


Windows Setup Guide

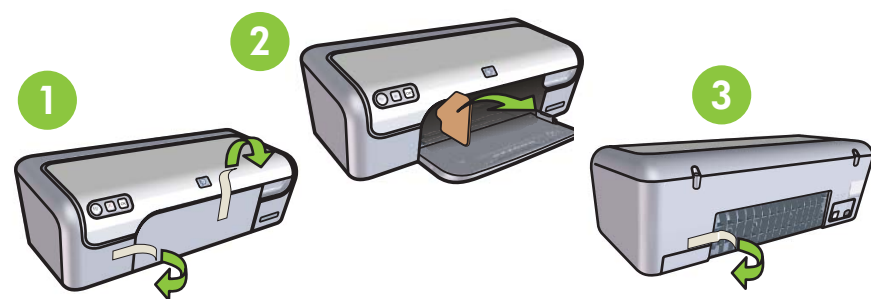
HP 900 Inkjet Printer



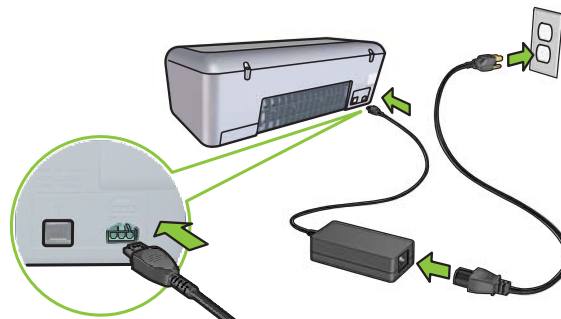
EN



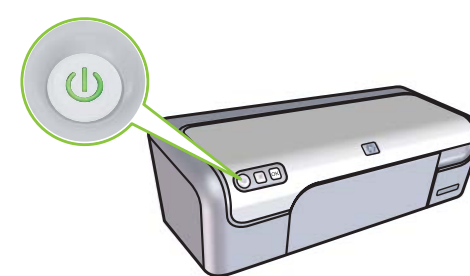
- 1** Remove ALL tape and cardboard packing material.



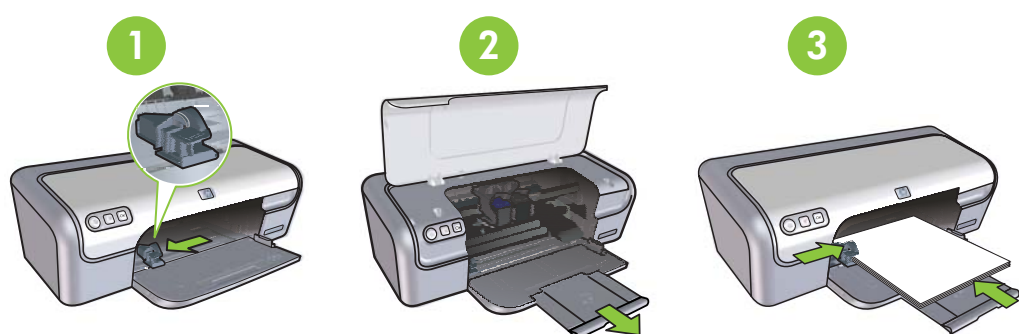
- 2** Plug in power supply.



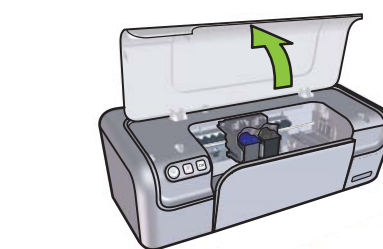
- 3** Turn printer on.



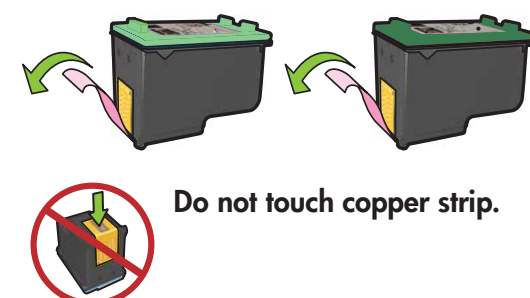
- 4** Slide paper guide to the left. Pull out extension. Load white paper.



- 5 1** Open top cover.



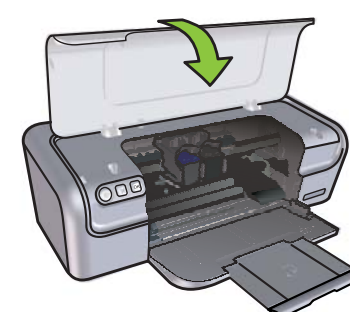
- 2** Pull pink tab to remove clear tape from print cartridges.



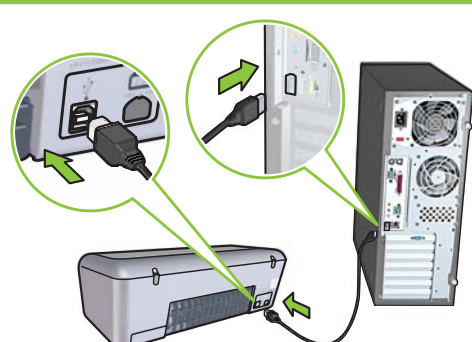
- 6** Insert print cartridges. Push cartridges firmly until they 'click' into place.



- 7** Close top cover.



- 8** Connect USB cable.



Purchase a USB cable separately if it is not included.

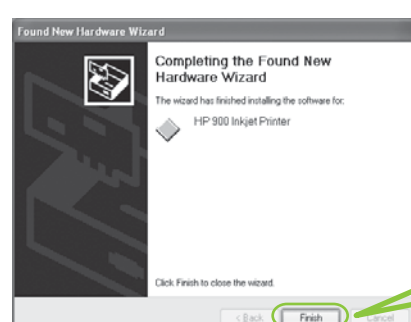
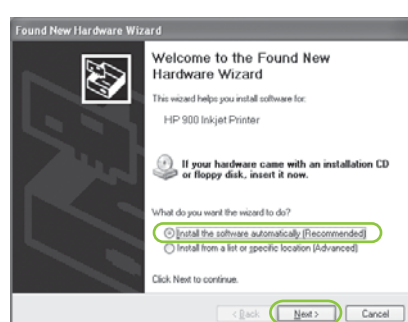


- 9** Install printer software

- 1 A wizard displays on your computer.
- 2 Follow the screens.
- 3 Insert the CD when directed.

- 4 Click Finish in the first wizard.
- 5 The installation wizard displays.
- 6 Follow onscreen instructions in the installation wizard.

Windows XP / Windows 2000



Click Finish.



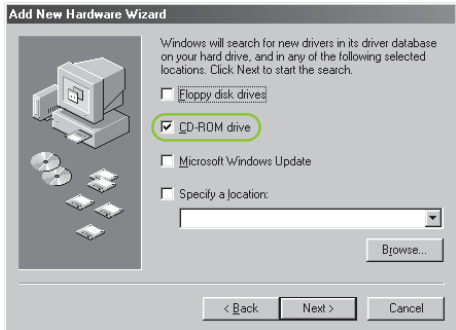
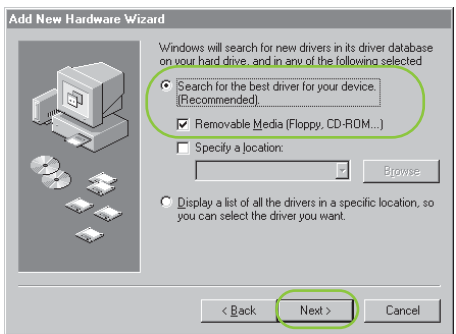
The installation wizard displays.



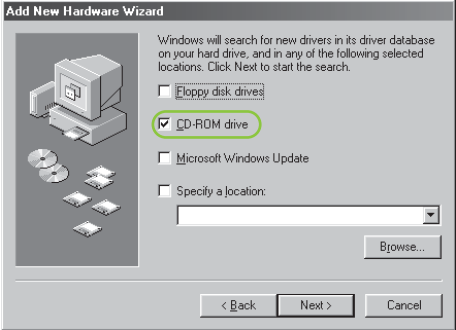
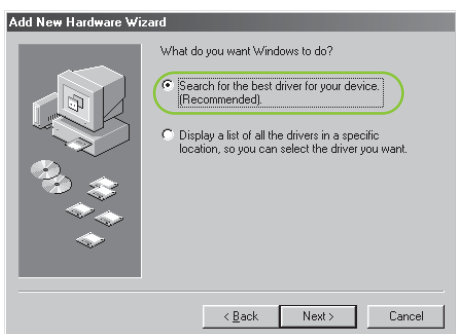
Install printer software

- 1 A wizard displays on your computer.
- 2 Follow the screens.
- 3 Insert the CD when directed.

Windows Me



Windows 98SE

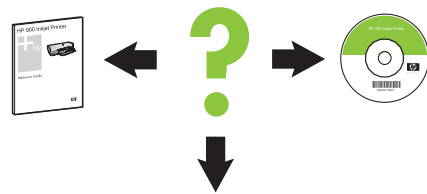


For virtually grain-free color photos that have exceptional fade resistance, purchase a photo print cartridge.

No screens?

1. Click the **Start** button, then select **Run**.
2. Click the **Browse** button.
3. Select **HP CD** in the **Look in** drop-down list.
4. Select **Setup**, then click the **Open** button.
5. Click **OK**, then follow the onscreen instructions.

Need more help?

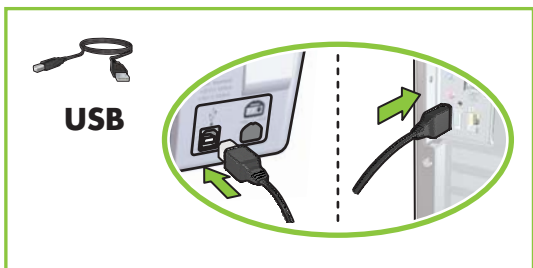


www.hp.com/support

If the installation fails...



Make sure printer is powered on.



Make sure cable connections are secure.



If this light is flashing, start at the beginning of this Setup Guide.

If the problem persists:

1. Remove the CD from the computer's CD-ROM drive, then disconnect the printer cable from the computer.
2. **Restart the computer.**
3. Temporarily disable any software firewall or close any anti-virus software. Re-start these programs after the printer is installed.
4. Insert the printer software CD in the computer's CD-ROM drive, then follow the onscreen instructions to install the printer software.
5. After the installation finishes, restart the computer.