

SMS Inventory Tool for HP ProLiant and Integrity Update Setup and Installation Guide



© Copyright 2006 Hewlett-Packard Development Company, L.P.

The information contained herein is subject to change without notice. The only warranties for HP products and services are set forth in the express warranty statements accompanying such products and services. Nothing herein should be construed as constituting an additional warranty. HP shall not be liable for technical or editorial errors or omissions contained herein.

Confidential computer software. Valid license from HP required for possession, use or copying. Consistent with FAR 12.211 and 12.212, Commercial Computer Software, Computer Software Documentation, and Technical Data for Commercial Items are licensed to the U.S. Government under vendor's standard commercial license.

Microsoft and Windows are U.S. registered trademarks of Microsoft Corporation. Windows Server 2003 is a U.S. trademark of Microsoft Corporation. Intel and Itanium are trademarks or registered trademarks of Intel Corporation or its subsidiaries in the United States and other countries.

October 2006 (Second Edition)

Part Number 406274-002

[Audience assumptions](#)

This document is for the person who installs, administers, and troubleshoots servers and storage systems. HP assumes you are qualified in the servicing of computer equipment and trained in recognizing hazards in products with hazardous energy levels.

Contents

Overview	4
Introduction	4
About this guide	5
SMS site hierarchy	6
Software components	7
Inventory tool components	7
Packages	8
HP Updates program	8
HP Updates (expedited) program	8
HP Updates Sync program	8
HP Insight Inventory Collector	8
Advertisements	9
HP Updates advertisement	9
HP Updates Sync advertisement	9
Collections	9
HP Updates collection	9
HP Updates Sync collection	10
HP Updates (pre-production) collection	10
HP Servers collection	10
Reports	11
Installation	12
Installation overview	12
Preinstallation checklist	12
Selecting the site server	13
Obtaining the latest HP manifest catalog	13
Selecting the scan tool mode	15
Selecting the sync tool mode	15
Renaming existing packages or collections	16
Information needed during installation	16
Installing the inventory tool	16
Upgrading the inventory tool	23
Post-installation procedures	26
Identifying HP servers to manage	26
Updating the HP Updates collection	26
Modifying the list of scanned systems	32
Running the hpCplVerify.exe utility on Itanium servers	35
Reviewing installation results	35
Acronyms and abbreviations	38
Index	40

Overview

In this section

Introduction	4
About this guide.....	5
SMS site hierarchy	6

Introduction

HP is providing a new integration tool, called the SMS Inventory Tool for HP ProLiant and Integrity Update (also referred to as the "inventory tool"), that facilitates the use of existing software management features for HP ProLiant and Integrity servers through Microsoft® SMS 2003 SP1 and SP2. This tool expands the existing ProLiant integration with SMS 2.0 and SMS 2003. The new tool adds SMS support for HP Integrity servers that are managed as clients by HP ProLiant SMS site servers.

When you use SMS 2003 to manage system hardware inventory and software update deployments, you can do so more effectively with ProLiant and Integrity servers than in the past. This functionality is complementary to HP Systems Insight Manager and to the HP OpenView suite of system management tools. The kit containing the tool and associated documentation can be downloaded from the HP website at no cost.

The inventory tool enables SMS 2003 SP1 and SP2 users to use SMS to manage and distribute HP system software, firmware (ROM and BIOS updates), and ProLiant or Integrity Support Packs to a group of servers. With the inventory tool, you can perform the following tasks:

- Perform an inventory of HP ProLiant and Integrity servers within the scope of the management collection. You can limit and adjust management collections to suit your needs. For example, a collection of servers related to a specific application can be created to ensure that servers for that application are managed consistently.
- Sort server inventory by server model or Microsoft® Windows® version. This feature simplifies the definition of update requirements and facilitates large-scale software deployments using SMS.
- Scan HP servers within a management collection to determine the current configuration of software, firmware, and support packs. Reviewing currently installed components is simplified by predefined SMS reports provided with the inventory tool.
- Authorize and deploy software updates to servers. Deployment of full ProLiant and Integrity Support Packs is comprehensive and complete. Support packs are pretested together to ensure smooth integration. Deployment of user-defined groups of components is possible with the inventory tool but cannot be guaranteed or supported by HP. You must perform adequate testing to ensure that your chosen combination of individual components will integrate in your environment.
- Manage distributions of specific components from within ProLiant and Integrity Support Packs. The inventory tool simplifies the process of installing a single software module (a driver update, for example) to a group of servers.
- Monitor component installation and results. Log files are available to allow post-deployment audits of updates.
- Perform an inventory of certain hardware-specific information through the HP Insight Inventory Collector.

The inventory tool supports installation of software from centralized software resources on the HP website, as well as from CD media for environments that do not have access to the Internet.

Experienced SMS users will find the experience of using the inventory tool to be obvious and intuitive. HP server customers will find that their familiarity with HP update resources simplifies their development of an efficient SMS environment.

About this guide

This guide is intended for use by system integrators and network administrators who are familiar with HP branded server and client system products and Microsoft® SMS 2003.

SMS 2003 and the inventory tool are both highly complex software systems that rely on many distributed components and network-based external resources to function correctly. For even the most highly experienced users, successful installation of the product is highly dependent on following the detailed installation instructions included in this guide. A clear understanding of the product architecture is important. *The SMS Inventory Tool for HP ProLiant and Integrity Update User Guide* provided separately in this kit can help to develop that understanding.

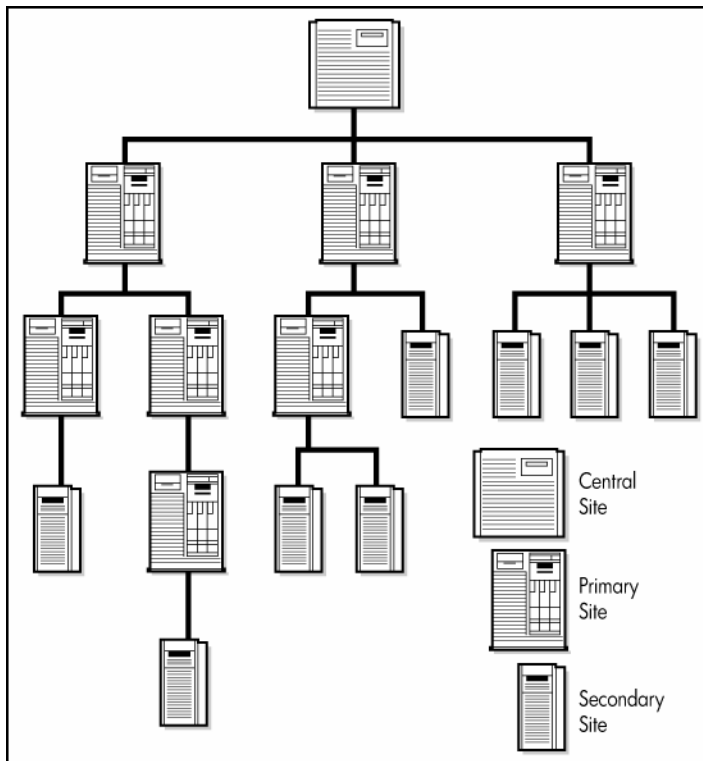
Installation of this product requires that hotfixes for SMS 2003 SP1 and SP2 be downloaded from the Microsoft® website (<http://support.microsoft.com/>) and successfully installed on both server and client systems. (See the release notes for more information.) This guide assumes that you have successfully installed the hotfixes before installing the inventory tool.

Use of this guide and other suggested resources is critical in installing, using, and troubleshooting the inventory tool. Be sure to carefully follow the instructions to install and use the inventory tool.

For more information about the inventory tool, including system requirements, advanced topics, and troubleshooting resources, see the *SMS Inventory Tool for HP ProLiant and Integrity Update User Guide*. To troubleshoot installation and configuration problems with the inventory tool, see the *SMS Inventory Tool for HP ProLiant and Integrity Update Troubleshooting Assistant*.

SMS site hierarchy

SMS sites are arranged in a hierarchy.



Using the inventory tool requires an understanding of the SMS site hierarchy. This hierarchy can include several site categories:

Category	Description
Central site	Single SMS site that stores system-wide information in a Microsoft® SQL Server database. Manages all other SMS sites.
Primary site	Stores subsystem information in an SMS database. Can manage additional primary or secondary sites. Created by running the SMS setup application.
Secondary site	Stores information in the SMS database of the associated primary site. Manages no additional sites. Created by the associated primary site.
SMS site server	The machine at a particular site that is responsible for managing that site and channeling all SMS information to and from the site.

An SMS site can include one or more domains and can be a parent, a child, or both:

- A parent site contains information on all associated child sites and can manage certain operations at these child sites.
- A child site receives information from and reports information to a parent.
- The central site is a parent site.
- A primary site is a child site (with the central site or another primary site as parent) and can be a parent site (with secondary sites or other primary sites as child sites).
- A secondary site is a child site.

Software components

In this section

Inventory tool components	7
Packages	8
Advertisements	9
Collections	9
Reports	11

Inventory tool components

The SMS Inventory Tool for HP ProLiant and Integrity Update kit contains software supporting HP ProLiant and HP Integrity servers. The kit consists of the following components:

- SMSITHU.msi ("Installing the inventory tool" on page 16)—The self-extracting installer runs the setup wizard to build the package, collections, and advertisements needed to deploy various components of the inventory tool within the SMS environment.
- Sync tool (hpSync.exe and hpUpdateCatalog.exe)—The sync tool is deployed by SMS and runs on a single SMS client. After the sync tool is installed, it periodically checks the HP website or dedicated network share folder to obtain the latest HP manifest catalog. The catalog is updated in the SMS Software Updates list and deployed to all managed servers within the SMS environment.
- Scan tool (hpScan.exe)—The scan tool is deployed by SMS and runs on the managed servers in the SMS environment. The scan tool performs automated, periodic scans of SMS client servers for installed software, firmware, and HP ProLiant and Integrity Support Pack updates.
- HP Insight Inventory Collector (on page 8) (Collect.exe)—The Collect utility has been incorporated into the inventory tool to enable users familiar with this tool to continue to use the utility. The Collect utility runs on the client servers and updates the SMS database with HP specific information.
- hpSMSTool utility—Uninstalling the inventory tool does not remove HP specific SMS database and WMI elements installed by the setup wizard. The hpSMSTool utility provides the functionality to remove these elements.
- Packages (on page 8)
- Advertisements (on page 9)
- Collections (on page 9)
- Reports (on page 11)

Additionally, SMS 2003 SP1 and SP2 hotfixes from Microsoft® are required before the inventory tool can be installed. These hotfixes are available on the Microsoft® website (<http://support.microsoft.com/>). See "Preinstallation checklist (on page 12)" for more information.

See the *SMS Inventory Tool for HP ProLiant and Integrity Update User Guide* for more information on the inventory tool components.

Packages

The inventory tool installer creates the package, HP Updates, to deploy the sync tool and the scan tool. The programs provided with the package include:

- HP Updates program (on page 8)
- HP Updates (expedited) program (on page 8)
- HP Updates Sync program (on page 8)
- HP Insight Inventory Collector (on page 8)

CAUTION: The setup wizard automatically generates new packages and collections and overwrites properties for any existing package or collection with the same name. Be sure to back up or rename any customized package or collections before beginning the installation.

NOTE: The package, collection, and advertisement names that are created will be prefixed with the name specified in the Distributions Settings screen of the setup wizard. This document uses "HP Updates" as the distribution setting name.

Each program is installed with default settings. See "Advanced topics" in the *SMS Inventory Tool for HP ProLiant and Integrity Update User Guide* for information on changing the default settings.

HP Updates program

The HP Updates program is distributed for advertising the scan tool. HP Updates executes the scan tool and returns the result of the scan to the SMS site server at the next hardware inventory cycle.

You can enable the advertisement for HP Updates to the HP Updates collection (on page 9) when installing the inventory tool.

HP Updates (expedited) program

Similar to HP Updates, the HP Updates (expedited) program is distributed to advertise the scan tool. HP Updates (expedited) executes the scan tool and returns the result to the SMS site server by issuing an immediate hardware inventory collection.

You must manually advertise HP Updates (expedited). The advertisement cannot be enabled when installing the inventory tool.

HP Updates Sync program

The HP Updates Sync program is used to advertise the sync tool. You can enable the advertisement for HP Updates Sync to the HP Updates Sync collection ("[HP Updates collection](#)" on page 9) when installing the inventory tool.

HP Updates Sync downloads the latest HP manifest catalog file from HP. The HP manifest catalog contains a list of the latest software, firmware, and HP ProLiant and Integrity Support Packs. The sync tool processes and updates this information in the SMS database.

HP Insight Inventory Collector

The HP Insight Inventory Collector program is distributed to advertise the Collect utility to managed client servers. You must manually advertise the Collect utility. The advertisement cannot be enabled when installing the inventory tool.

For more information on the Collect utility, see "HP Insight Inventory Collector" in the *SMS Inventory Tool for HP ProLiant and Integrity Update User Guide*.

Advertisements

Advertisements for the sync tool and the scan tool can be enabled during installation. If these options are enabled, the following advertisements are created:

- HP Updates advertisement (on page 9)
- HP Updates Sync advertisement (on page 9)

HP Updates advertisement

The HP Updates advertisement distributes the scan tool to the SMS clients. By default, this advertisement runs weekly on the HP Updates collection (on page 9) to take inventory of the HP software. The results are collected at the next hardware inventory cycle.


HP Updates Sync advertisement


The HP Updates Sync advertisement runs the sync tool on the targeted system. By default, this advertisement runs daily on the HP Updates Sync collection (on page 10) to obtain the latest HP manifest catalog and update the SMS site server.

Collections

The setup wizard automatically generates the following collections to identify HP ProLiant and Integrity servers and the installed operating system:

- HP Updates collection (on page 9)
- HP Updates (pre-production) collection (on page 10)
- HP Updates Sync collection (on page 10)
- HP Servers collection (on page 10)
 - ProLiant Servers by Model
 - ProLiant Servers by OS
 - Integrity Servers

 **CAUTION:** The setup wizard automatically generates new packages and collections and overwrites properties for any existing package or collection with the same name. Be sure to back up or rename any customized package or collections before beginning the installation.

 **NOTE:** The HP Servers collection name is automatically generated. The collection name is fixed and cannot be changed during or after installation. For information about creating or modifying default collections, see the Microsoft® website (<http://www.microsoft.com/smsserver/techinfo/productdoc>).

HP Updates collection

The HP Updates collection is the default collection for advertising the scan tool. During installation, you can advertise the scan tool to the HP Updates collection. After installation, this collection contains only the test system that was specified during the setup process.

See "Using the scan tool" in the *SMS Inventory Tool for HP ProLiant and Integrity Update User Guide* for more information about the scan tool.

HP Updates Sync collection

The HP Updates Sync collection is the default collection for advertising the sync tool. During installation, you can advertise the sync tool to its default collections.

Depending on the settings for the sync tool, the systems within this collection might require an FTP connection for the sync tool to function properly. See "Using the sync tool" in the *SMS Inventory Tool for HP ProLiant and Integrity Update User Guide* for more information.

HP Updates (pre-production) collection

The HP Updates (pre-production) collection enables you to test the scan tool before putting the inventory tool and target system into the production environment. This collection is not advertised. Verify that the scan tool is properly running by checking status of the advertisement and reviewing the software update reports. See "Using the scan tool" and "Software update reports" in the *SMS Inventory Tool for HP ProLiant and Integrity Update User Guide* for more information.

HP Servers collection

The HP Servers collection enables quick identification and categorization of HP ProLiant and Integrity servers within the SMS environment. Each collection is defined with specific query statements, enabling you to identify systems by model type or operating system.

- HP Servers collection—Includes all HP servers and previously released Compaq servers



NOTE: The HP Servers collection name is automatically generated. The collection name is fixed and cannot be changed during or after installation. For information about creating or modifying default collections, see the Microsoft® website (<http://www.microsoft.com/smsserver/techinfo/productdoc>).

- ProLiant Servers by Model—Includes all ProLiant BL, DL, and ML series servers and previously released ProLiant servers
 - ProLiant Servers BL—Includes all ProLiant BL servers
 - ProLiant Servers DL—Includes all ProLiant DL servers
 - ProLiant Servers ML—Includes all ProLiant ML servers
- ProLiant Servers by OS—Includes all ProLiant BL, DL, and ML series servers and previously released ProLiant servers
 - ProLiant Servers Windows Server 2000 Systems—Includes all x86 ProLiant servers that are running Windows® Server 2000
 - ProLiant Server Windows Server 2003 System—Includes all x86 ProLiant servers that are running Windows Server™ 2003
 - ProLiant Server Windows Server 2003 x64 Editions System—Includes all x64 ProLiant servers that are running Microsoft® Windows Server™ 2003 x64 Editions
- Integrity Servers—Includes the following Integrity model servers running any Microsoft® Windows Server™ 2003 with SP1 for Itanium-based Systems operating system:
 - HP Integrity rx1620 servers
 - HP Integrity rx2600 servers
 - HP Integrity rx2620 servers
 - HP Integrity rx2660 servers
 - HP Integrity rx3600 servers
 - HP Integrity rx4640 servers
 - HP Integrity rx5670 servers

- HP Integrity rx6600 servers
- HP Integrity rx7620 servers
- HP Integrity rx7640 servers
- HP Integrity rx8620 servers
- HP Integrity rx8640 servers
- HP Integrity Superdome servers
- HP Integrity Virtual Machine servers

Reports

In addition to the standard SMS reports, HP specific reports are also installed during installation. These reports contain information specific to each supported HP server within the SMS environment. See "Software update reports" in the *SMS Inventory Tool for HP ProLiant and Integrity Update User Guide* for more information.

Installation

In this section

Installation overview	12
Preinstallation checklist.....	12
Installing the inventory tool	16
Upgrading the inventory tool	23
Post-installation procedures.....	26
Reviewing installation results.....	35

Installation overview

⚠ CAUTION: Upgrading or reinstalling the inventory tool might overwrite any custom settings, such as updates to hpSyncConfig.xml and ScanConfig.xml. Make note of all custom settings, and reapply the settings after the upgrade or installation is complete.

Installing the inventory tool on the SMS site server includes the following steps:

1. Completing the preinstallation checklist (on page 12)
2. Downloading and installing the inventory tool ("Installing the inventory tool" on page 16)
3. Reviewing installation results (on page 35)
4. Completing all post-installation procedures (on page 26)

Preinstallation checklist

HP recommends that you review this guide and the *SMS Inventory Tool for HP ProLiant and Integrity Update User Guide* before installing the inventory tool.

Complete the following preinstallation checklist to begin installation of the inventory tool.

1. Review the *SMS Inventory Tool for HP ProLiant and Integrity Update User Guide* to familiarize yourself with the architecture of the product and how it relates to SMS and external HP resources.
2. If the installation will have limited or no Internet access, familiarize yourself with the specific steps required to successfully install and use the product, beginning in this section.
3. Download and install the latest Microsoft® SMS hotfixes from the Microsoft® website (<http://support.microsoft.com/>). These hotfixes were released specifically for the HP inventory tool. Follow the installation instructions from Microsoft® to install the hotfixes. See the release notes for more information.

📌 IMPORTANT: Only the last hotfix installed can be removed.

📌 IMPORTANT: Contact Microsoft® support for assistance with installing Microsoft® hotfixes. Confirm that all hotfixes are successfully installed before proceeding with the installation.

4. Download and install the latest HP ProLiant or Integrity Support Packs. See the *SMS Inventory Tool for HP ProLiant and Integrity Update User Guide* for support pack requirements.

5. For SMS site servers without an FTP connection, setup the network share folder ("[SMS site server without an FTP connection](#)" on page 14).
6. For SMS site servers with limited Internet access or FTP capabilities, verify that the account specified for the synchronization process is set up properly. Locate and run PatchDownloader.exe from the SMS installation directory to set up an authentication account.
7. Select the site server ("[Selecting the site server](#)" on page 13).
8. Select the sync tool mode ("[Selecting the sync tool mode](#)" on page 15).
9. Select the scan tool mode ("[Selecting the scan tool mode](#)" on page 15).
10. Rename existing packages or collections ("[Renaming existing packages or collections](#)" on page 16).
11. Gather the appropriate information needed during installation (on page 16).

Selecting the site server

The setup wizard can only run on an SMS site server. If the SMS environment contains more than one SMS site server, HP recommends that the inventory tool be installed on a primary SMS site server that is highest in the hierarchy, such as a central site server. This site server must have the highest coverage of all managed HP servers in the environment. For more information about the SMS environment structure, see "SMS site hierarchy (on page 6)."



NOTE: HP Integrity servers are not supported as SMS site servers.

Obtaining the latest HP manifest catalog

The setup wizard can obtain the latest HP manifest catalog from the HP website or a network shared folder:

- For SMS site servers with access to the Internet, see "SMS site server with an FTP connection (on page 13)" for instructions on downloading the HP manifest catalog from the HP website.
- For SMS site servers without access to the Internet, see "SMS site server without an FTP connection (on page 14)" for instructions on downloading the HP manifest catalog from a network shared folder.

The sync tool can also be used to download the latest HP manifest catalog after the inventory tool is installed. See "Obtaining the HP manifest catalog with the sync tool (on page 16)" for more information.



IMPORTANT: If the inventory tool is configured to use a network share during installation, components updated with DSUW will also be obtained from network share. Components will be obtained from the HP FTP site if the tool is set up to use FTP during setup. See the section "Switching between the Internet and network share to obtain HP catalog and components" section in the *SMS Inventory Tool for HP ProLiant and Integrity Update User Guide* for more information.

SMS site server with an FTP connection

If the SMS site server has an FTP connection, HP recommends using the setup wizard to download the latest HP manifest catalog from the HP website.

The SMS environment might use a proxy that requires authentication to access the Internet. Be sure to run the setup wizard using an account that has the following characteristics:

- Access to the Internet
- SMS administrative permissions (SMS admins group)
- Local administrative permissions (Local administrators group)

Also, be sure to verify that your network access, including firewalls or proxy servers are setup to allow active FTP access.

The following configuration steps are required if you are running hpSync in unattended mode on remote host server with Web Proxy. To obtain the latest HP manifest catalog for an SMS site server with an FTP connection:

1. Open command prompt cmd.exe on remote host server on which hpSync will run.
2. Run the command `time` to obtain the current system time.
3. Run the command `at hh:mm /interactive "C:\Program Files\Internet Explorer\iexplore.exe"` where hh:mm is the current time plus two minutes.
4. After Internet Explorer opens, select **Tools>Internet Options**.
5. Click the **Connections** tab, and click **LAN Settings**.
6. Select **Use a proxy server**, and enter the address and port for the proxy server.
7. Click **OK**, and click the **Advanced** tab.
8. Be sure that **Enable folder view for FTP sites** is **not** selected, and click **OK**.
9. Use the PatchDownloader.exe application to set up a proper access account if web access is limited to certain accounts. Be sure to specify the same proxy server as entered in step 6. For more information on using PatchDownloader.exe, see the *Microsoft® Systems Management Server 2003 Operations Guide*.

See "Access rights" in the *SMS Inventory Tool for HP ProLiant and Integrity Update User Guide* for more information on setting up the connections. Verify that this step is completed before proceeding with the installation.

SMS site server without an FTP connection

If the SMS site server does not have an FTP connection, the HP manifest catalog and all component files must be provided on a local network share.

In this case, the setup wizard downloads the HP manifest catalog from the network shared folder. Before running the setup wizard, be sure the selected network shared folder contains the latest HP manifest catalog and individual components.

After the sync tool is configured to obtain the HP manifest catalog and individual components from the network shared folder, you must verify that the share is regularly updated with the latest manifest catalog to ensure information in the SMS site server is current.

To download the HP manifest catalog and individual components to a network shared folder:

1. Create the folder C:\HPBinaries on a local system or network (C:\HPBinaries is an example; there are no restrictions on the folder name).
2. Create the folder C:\HPBinaries\Catalog. This folder stores the HP manifest catalog.
3. Create the folder C:\HPBinaries\Components.
4. Create the folder C:\HPBinaries\Components\ProLiant. This folder stores manually downloaded components for ProLiant updates. Proceed to step 6 if you are not managing Integrity servers within your SMS environment.
5. Create the folder C:\HPBinaries\Components\Integrity. This folder stores manually downloaded components for Integrity updates.
6. Download the HP manifest catalog (catalog.cab) from the HP website (<ftp://ftp.hp.com/pub/softlib/software2/COL3293/>) to the Catalog folder created in step 2.
7. Download the latest support pack and components for your HP ProLiant server or Integrity server from the appropriate HP website to the corresponding Components folder created in step 4 and step 5. Download ProLiant components and support packs from the HP website (<http://www.hp.com/servers/psp>), and download Integrity components and support packs from the HP website (<http://www.hp.com/support/itaniumservers>).
8. Share the folders created in steps 1 through 5, and give Read permissions to all users.



NOTE: The network share folder specified must have the two subfolders, "Catalog" and "Components." Download the HP manifest catalog to the Catalog folder and the HP ProLiant or Integrity Support Pack to the appropriate Components subfolder.

Selecting the scan tool mode

The scan tool runs on an SMS client to collect HP software and firmware information. By default, the scan tool reports the latest version of a component as "Requested."

The scan tool reports a software update as "Compliant" if the update version is the same as the software currently installed. However, in the case when the exact version is not available from the latest HP manifest catalog, the component with the closest version (but older than the installed version) will be reported.

The scan tool cannot detect components that are not installed with HP software. HP recommends that you advertise and install the latest HP ProLiant or Integrity Support Packs as the first step to verify that the scan tool can detect and enable the upgrade of new components.

The scan tool supports three modes of operation:

- Latest—Only reports "Requested" status for the latest version of the component (default)
- Applicable—Reports "Requested" status for all versions of the component newer than the installed version
- All—Reports "Requested" for all available versions of the installed components (including older versions)

The scan tool supports the following scan types for HP ProLiant servers:

- HP ProLiant Software—Reports the version status for ProLiant software only
- HP ProLiant Firmware—Reports the version status for ProLiant firmware only
- HP ProLiant Support Pack—Reports the version status for ProLiant Support Packs only

The scan tool supports the following scan types for HP Integrity servers:

- HP Integrity Software—Reports the version status for Integrity software only
- HP Integrity Support Pack—Reports the version status for Integrity Support Packs only

See "Using the scan tool" in the *SMS Inventory Tool for HP ProLiant and Integrity Update User Guide* for information about the scan tool.

Selecting the sync tool mode

The sync tool runs on an SMS client and is referred to as the "sync host." The sync host can be an SMS site server if the server is also an SMS client. The sync host does not have to be an HP server. HP Integrity servers are not supported as sync hosts.

The sync tool can run in two modes:

- Attended mode—By default, the sync tool is set up to run in attended mode, which means that you must be logged in to the console when the sync tool runs. In attended mode, the sync tool runs in the security context of a user account with SMS administrative permissions and accesses the Internet. Running the sync tool in attended mode is often the simplest way to get around proxy authentication and access rights issues.



NOTE: You must be logged in if the sync tool is set up to run in attended mode. The sync tool will not run if you are not logged in to the sync host when attended mode is chosen.

- Unattended mode—In unattended mode, the sync tool will run even if you are not logged in to the sync host. To run the sync tool in unattended mode, see "Configuring the sync tool for unattended mode" in the *SMS Inventory for HP ProLiant and Integrity Update User Guide* for instructions.

The sync tool must run under an account that is a member of the Privileged groups on the SMS site server and the SMS Provider machine. For more information about the resources and access rights the sync task uses, see "Access rights" in the *SMS Inventory for HP ProLiant and Integrity Update User Guide*.

A complete discussion of the sync tool modes can be found on the Microsoft® website (<http://www.microsoft.com/smsserver/techinfo/productdoc>).

Obtaining the HP manifest catalog with the sync tool

There are two methods to obtain the HP manifest catalog with the sync tool:

- Sync with the Internet—HP recommends that the sync tool be used to automatically download the HP manifest catalog from the HP website. Using this method, new catalog updates can be automatically implemented with no user intervention.

Be sure that the sync host has an FTP connection so that the sync tool can automatically download the latest HP manifest catalog. If the SMS environment uses a proxy that requires authentication, see "SMS site server with an FTP connection (on page 13)" for more information.

- Sync with a network shared folder—If the sync host does not have an FTP connection, HP recommends configuring the sync tool to obtain the HP manifest catalog from a local folder or a network shared folder. The SMS administrator must manually download the HP manifest catalog and HP ProLiant or Integrity Support Pack components from the HP website and place the files in the appropriate locations. See "SMS site server without an FTP connection (on page 14)" for more information.



NOTE: The network share folder specified must have the two subfolders, "Catalog" and "Components." Download the HP manifest catalog to the Catalog folder and the HP ProLiant or Integrity Support Pack to the appropriate Components subfolder.

Renaming existing packages or collections

The setup wizard automatically generates new packages and collections and overwrites properties for any existing package or collection with the same name. Be sure to back up or rename any customized package or collections before beginning the installation.

Information needed during installation

Have the following information available before installing the inventory tool:

- SMS site server name
- SMS site server site code
- NetBIOS name of an SMS client with Internet access (if the sync tool is intended to automatically download the HP manifest catalog)
- Network shared folder name (if an administrator will download the HP manifest catalog)

The user account performing the installation must have the following permissions:

- Package creation rights
- Collection creation rights (for some options)
- Advertisement creation rights (for some options)

Installing the inventory tool

A setup wizard will guide you through installing the inventory tool. The setup wizard performs the following tasks:

- Downloading the HP manifest catalog
- Building the package, collections, and advertisements needed to deploy the components of the inventory tool
- Installing enhanced web-based reporting of HP software and hardware inventory results
- Enabling deployment of the scan tool and the sync tool to SMS clients

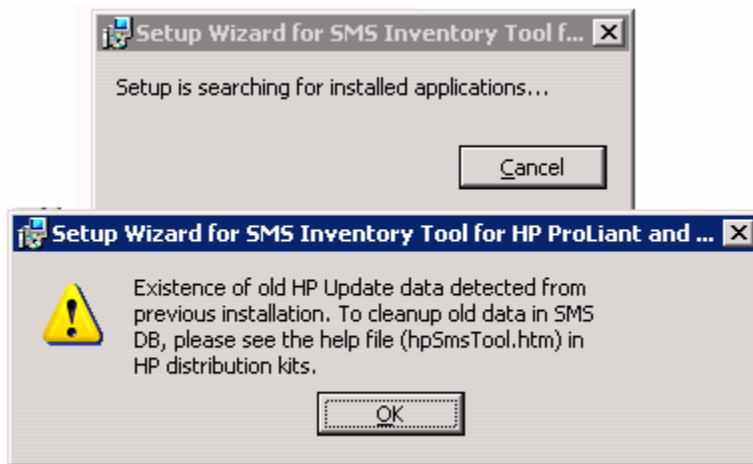


IMPORTANT: Verify that all steps on the preinstallation checklist (on page 12) are completed before installing the inventory tool.

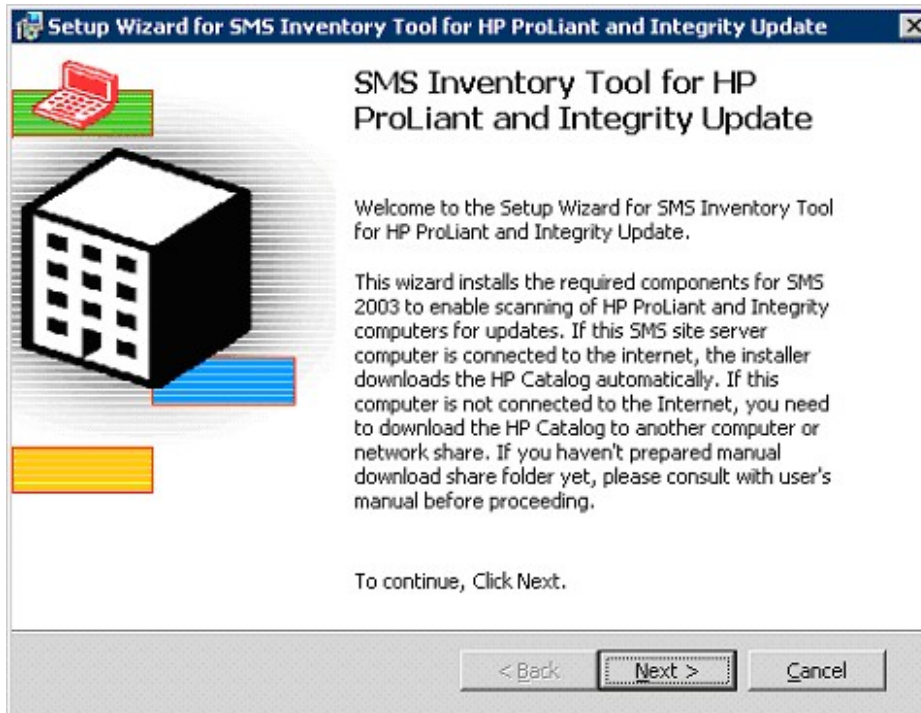
To install the inventory tool:

1. Download the self-extracting executable file SMSITHU.msi from the HP website to the SMS site server.
2. Extract the contents of the file to a temporary folder.
3. Execute the file SMSITHU.msi to launch the setup wizard.

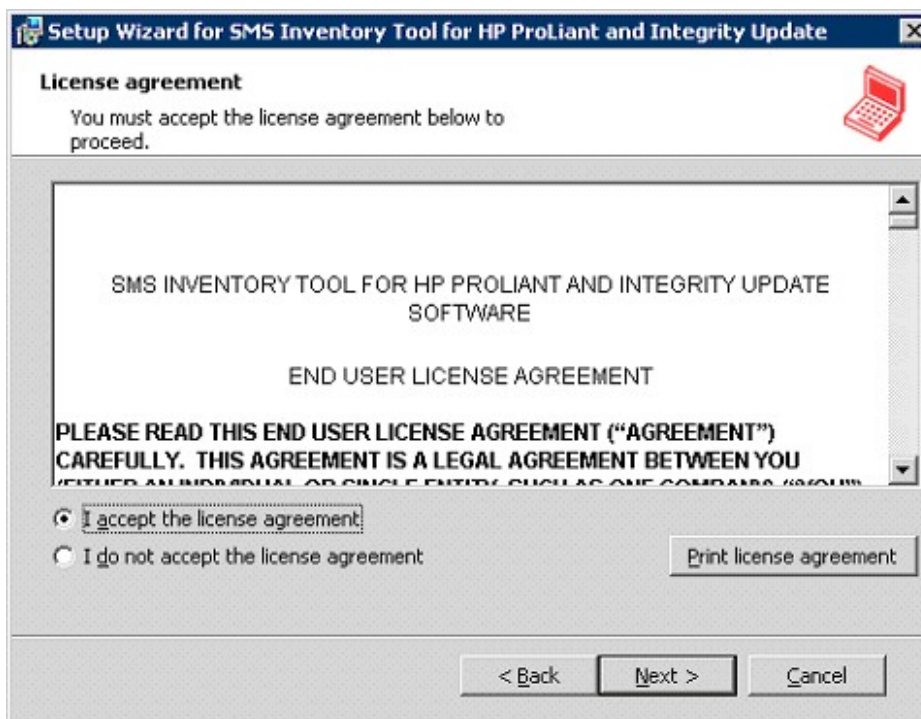
The setup wizard first verifies that there is no HP data in the database from a previous installation and uninstallation of ITHU. If the setup wizard detects HP data in the database, the following window appears. Click **OK**, and see the "Removing the inventory tool" section in the *SMS Inventory Tool for HP ProLiant and Integrity Update User Guide* for information on removing the inventory tool.



If no HP data is detected, proceed with the setup wizard by clicking **Next**.

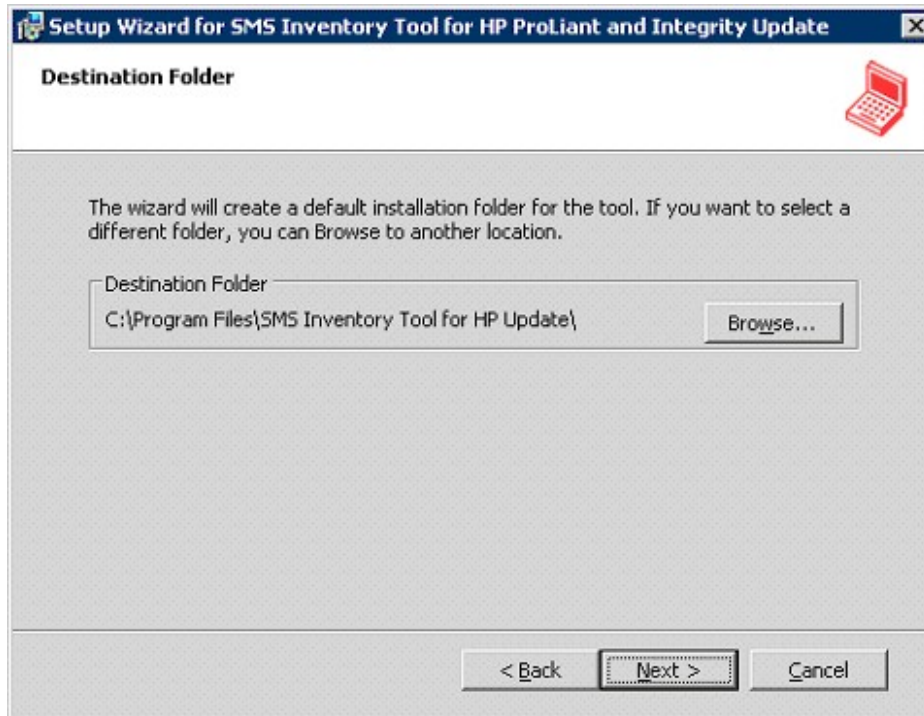


4. Select **I Agree** to accept the license agreement, and click **Next**.




5. Select a destination folder on the SMS site server, and then click **Next**. This location is where the setup wizard will install the inventory tool files.


 **NOTE:** The destination folder will be used as the SMS package source folder, and the setup process will secure it appropriately. For more information about creating and securing the SMS package source folder, see the Microsoft® website (<http://www.microsoft.com/smsserver/techinfo/productdoc>).




If the destination folder already exists, the Setup Wizard for inventory tool screen appears.



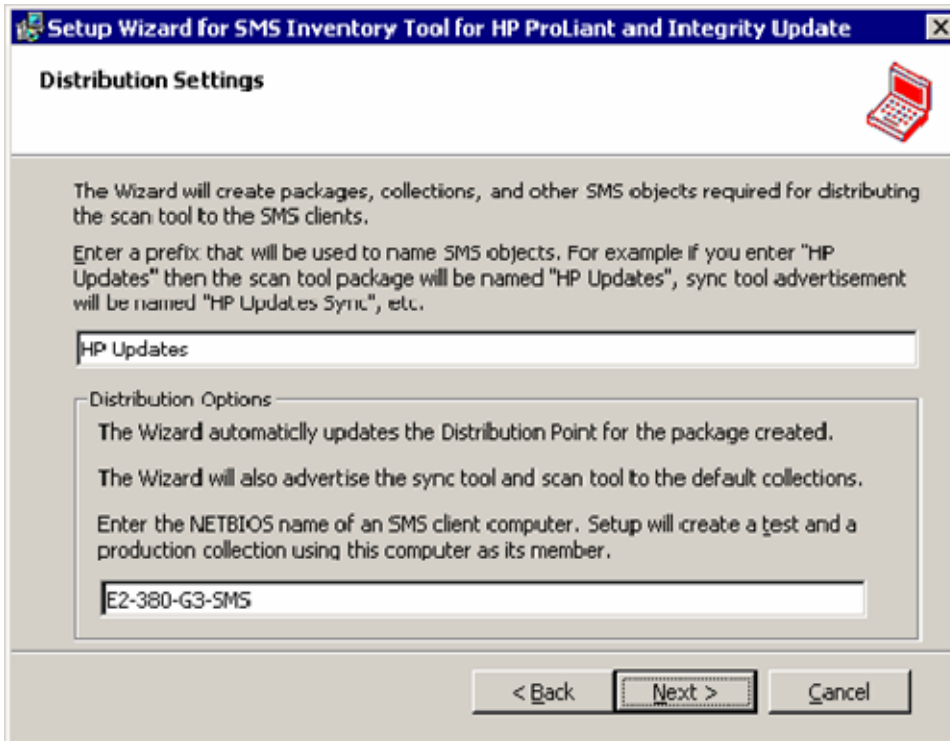
 **CAUTION:** Be sure the existing destination folder does not contain files or data needed after installation. The setup wizard will overwrite the contents of an existing destination folder, and the original contents will be erased.

 **IMPORTANT:** To use an existing destination folder, the user account performing the installation must have Read and Write permissions for the existing folder.


- To use an existing destination folder, click **Yes**.
 - To change the destination folder, click **No**, and repeat step 5.
6. The setup wizard requires an SMS client to use as a test system before deploying the scan tool and updates to all SMS clients. During testing, updates will be deployed to this system to verify whether the components are functioning properly. This test system must be an existing SMS client. To begin the test:
- a. Specify the package name that will be used to name the SMS objects.

 **NOTE:** The package, collection, and advertisement names that are created will be prefixed with the name specified in the Distributions Settings screen of the setup wizard. This document uses "HP Updates" as the distribution setting name.

- b. Specify the NETBIOS name of an existing SMS client to use as a test server, and then click **Next**.



The screenshot shows a Windows-style dialog box titled "Setup Wizard for SMS Inventory Tool for HP ProLiant and Integrity Update". The main heading is "Distribution Settings". Below the heading, there is a laptop icon. The text explains that the wizard will create packages, collections, and other SMS objects. It asks for a prefix for naming SMS objects, with "HP Updates" entered in the text box. Below this, there is a "Distribution Options" section with three bullet points: "The Wizard automatically updates the Distribution Point for the package created.", "The Wizard will also advertise the sync tool and scan tool to the default collections.", and "Enter the NETBIOS name of an SMS client computer. Setup will create a test and a production collection using this computer as its member." The text box for the NETBIOS name contains "E2-380-G3-SMS". At the bottom, there are three buttons: "< Back", "Next >", and "Cancel".

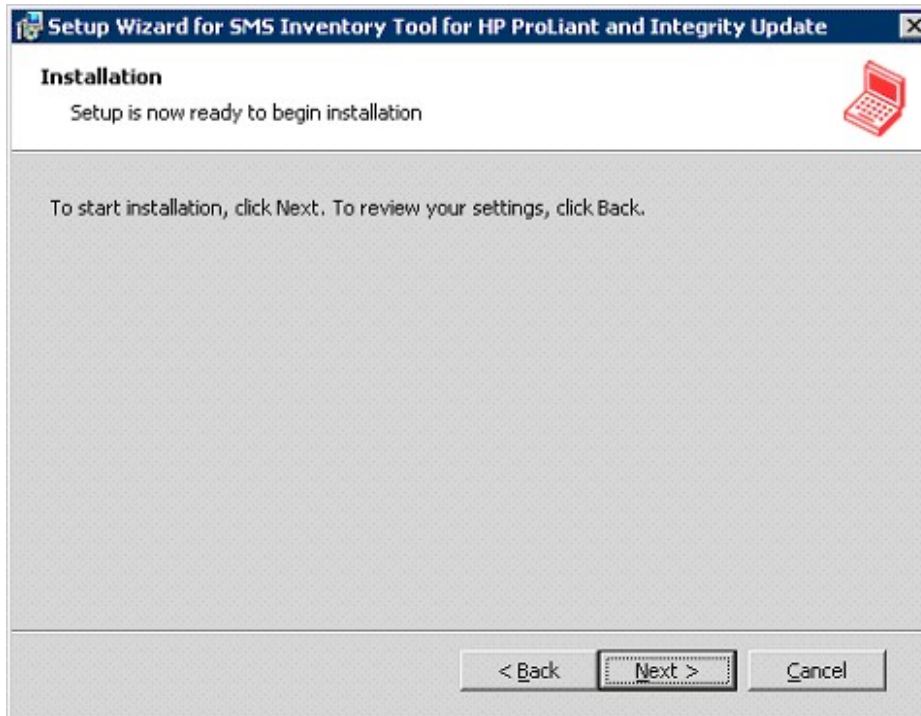
 **IMPORTANT:** The SMS client must have an FTP connection for the sync tool to download the HP manifest catalog. If the SMS client does not have an FTP connection, proceed to step 7.

7. To configure the sync tool to download the HP manifest catalog from the Internet:
 - a. Select **Automatically download the components from the web**.

- b. Click **Next**.

8. To configure the sync tool to download the HP manifest catalog and HP ProLiant or Integrity Support Pack components from a local folder or a network shared folder:
- Select **Manually copy the components from a folder or network share**.
 - Enter the path of the folder that contains the HP manifest catalog and HP ProLiant or Integrity Support Pack components. See "SMS site server without an FTP connection (on page 14)" for more information.
 - Click **Next**.

9. Click **Next** to start the setup process.

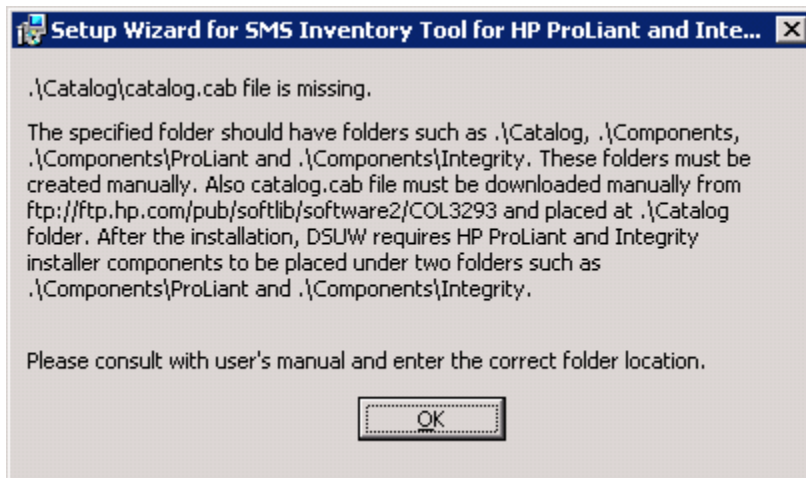


During the setup process, the setup wizard installs the files required by the inventory tool to the destination folder specified in step 5. The setup wizard creates the package, collections, and advertisements needed to deploy the scan tool, the sync tool, and other components of the inventory tool.

The following message appears if the setup wizard encounters a problem while obtaining the HP manifest catalog from the HP FTP site. See "SMS site server with an FTP connection (on page 13)" for information on downloading the HP manifest catalog using FTP.

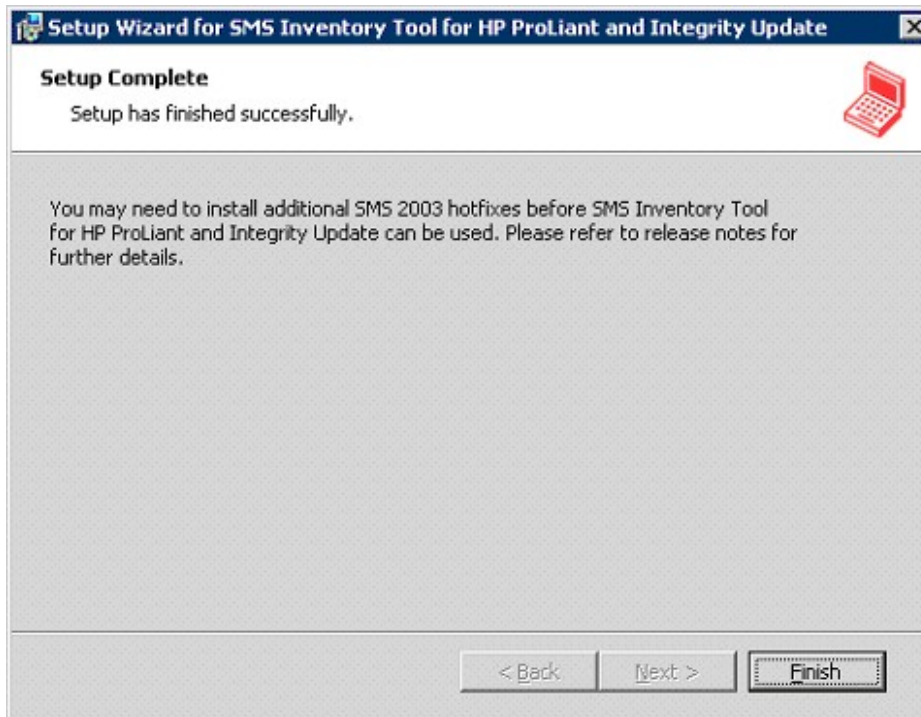


The following message appears if the setup wizard encounters a problem while obtaining the HP manifest catalog from the local share. See "SMS site server without an FTP connection (on page 14)" for information on storing the HP manifest catalog in a local share.



When the setup process is complete, the Setup Complete page appears.

10. Click Finish.



Upgrading the inventory tool

A setup wizard will guide you through upgrading the inventory tool. The setup wizard performs the following tasks:

- Downloading the HP manifest catalog
- Building the package, collections, and advertisements needed to deploy the components of the inventory tool
- Installing enhanced web-based reporting of HP software and hardware inventory results

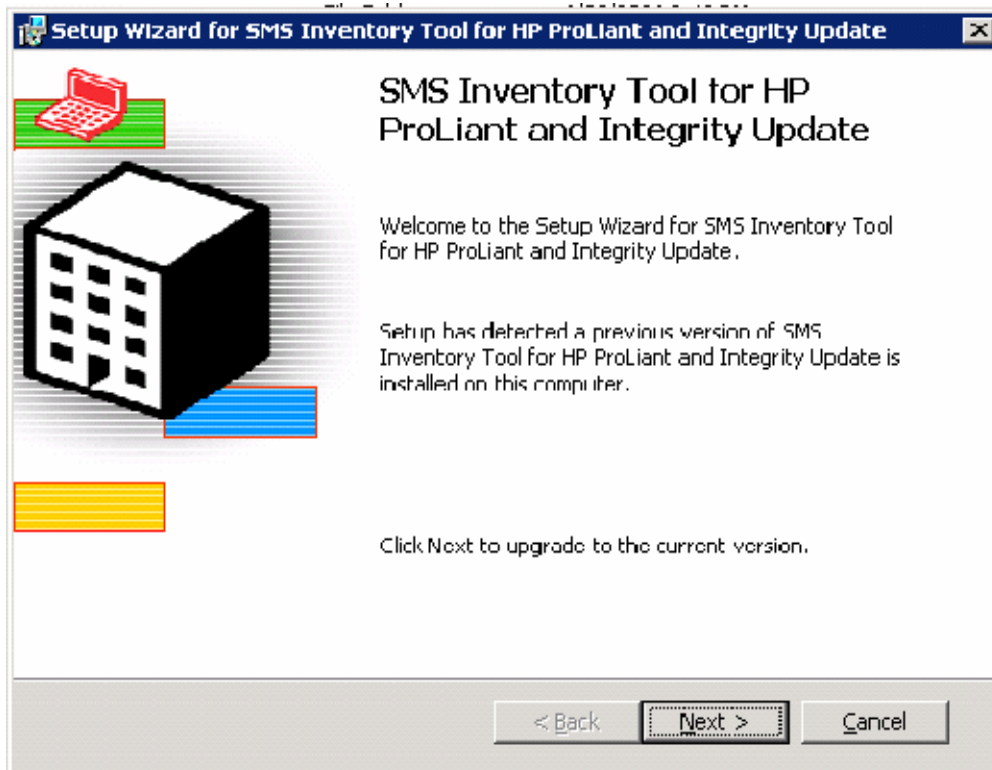
- Enabling deployment of the scan tool and the sync tool to SMS clients



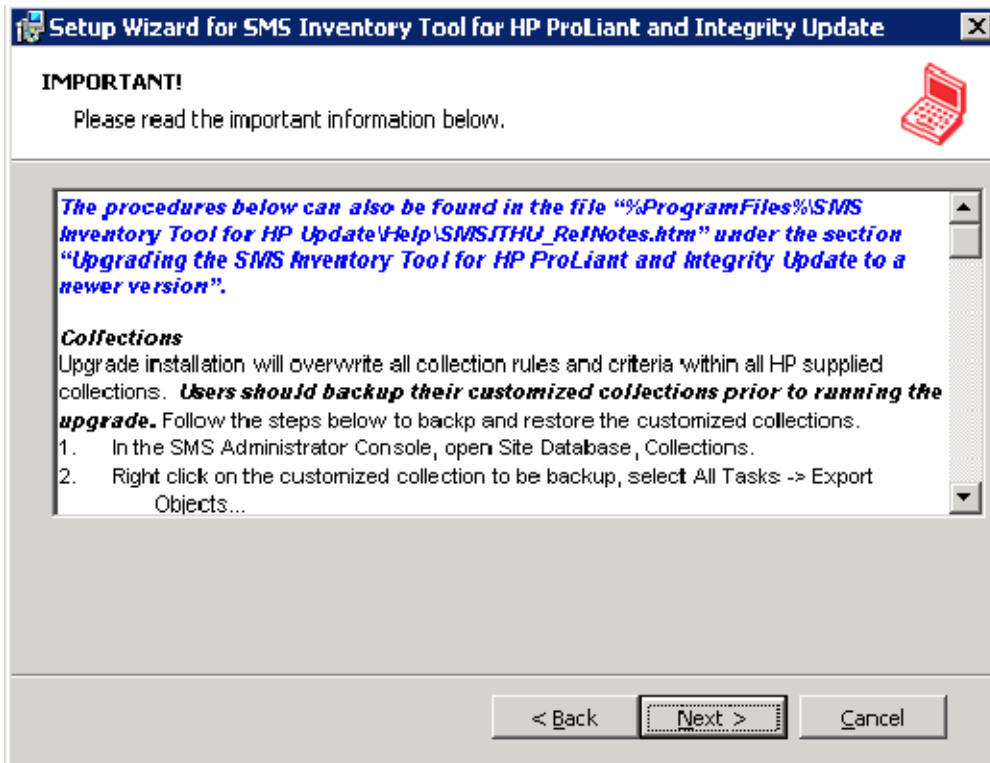
IMPORTANT: Verify that all steps on the preinstallation checklist (on page 12) are completed before installing the inventory tool.

To upgrade the inventory tool:

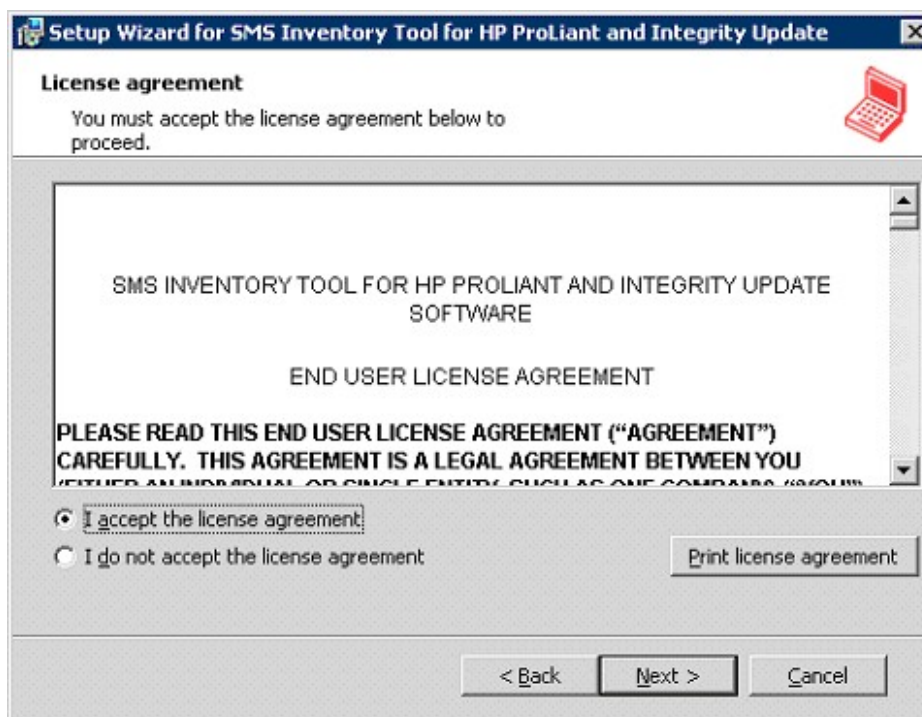
1. Download the self-extracting executable file SMSITHU.msi from the HP website to the SMS site server.
2. Extract the contents of the file to a temporary folder.
3. Execute the file SMSITHU.msi to launch the setup wizard. Proceed with the setup wizard by clicking **Next**.



4. Read the important information regarding upgrading the SMS Inventory tool before proceeding. Click **Next** to continue.



5. Select **I Agree** to accept the license agreement, and click **Next**.



6. To complete the upgrade, perform steps 9-10 in the Installing the inventory tool (on page 16) section.

Post-installation procedures

After installing the inventory tool, complete the following post-installation procedures before deploying software updates:

1. Identify HP servers to manage ("[Identifying HP servers to manage](#)" on page 26).
2. Update the HP Updates collection ("[Updating the HP Updates collection](#)" on page 26).
3. Modify the list of scanned systems ("[Modifying the list of scanned systems](#)" on page 32), if necessary.
4. For 64-bit Intel® Itanium® systems only, run the hpCplVerify.exe utility ("[Running the hpCplVerify.exe utility on Itanium servers](#)" on page 35).

Identifying HP servers to manage

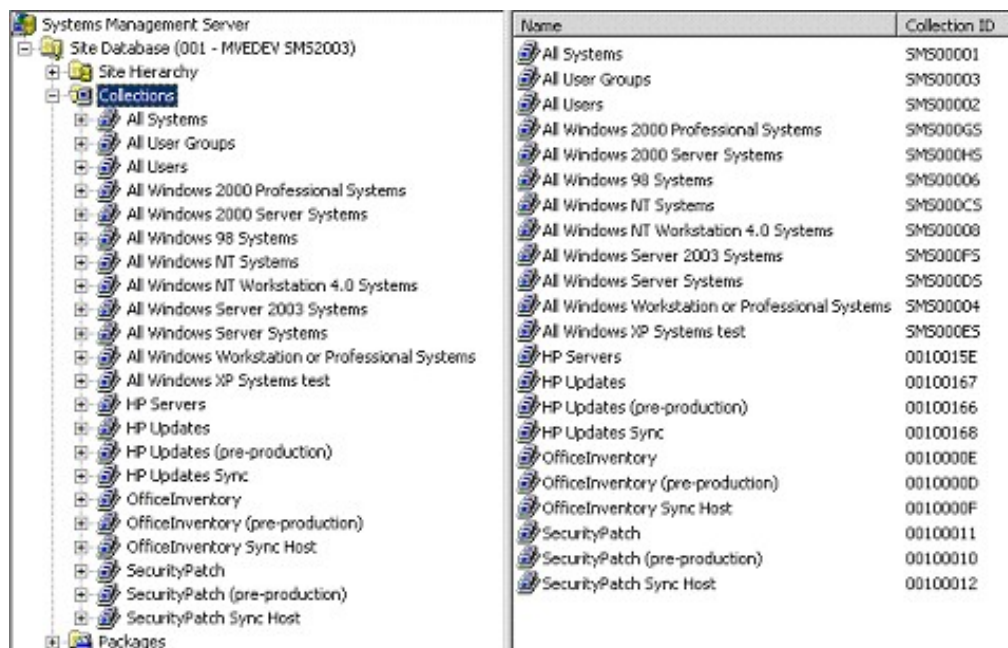
Multiple collections are created during installation to enable you to identify HP servers within the SMS environment. These collections can be modified to fit individual needs.

The HP Updates collection (on page 9) is the default collection targeted for advertising the scan tool. This collection must be properly updated so that the scan tool is advertised to the correct target system.

Updating the HP Updates collection

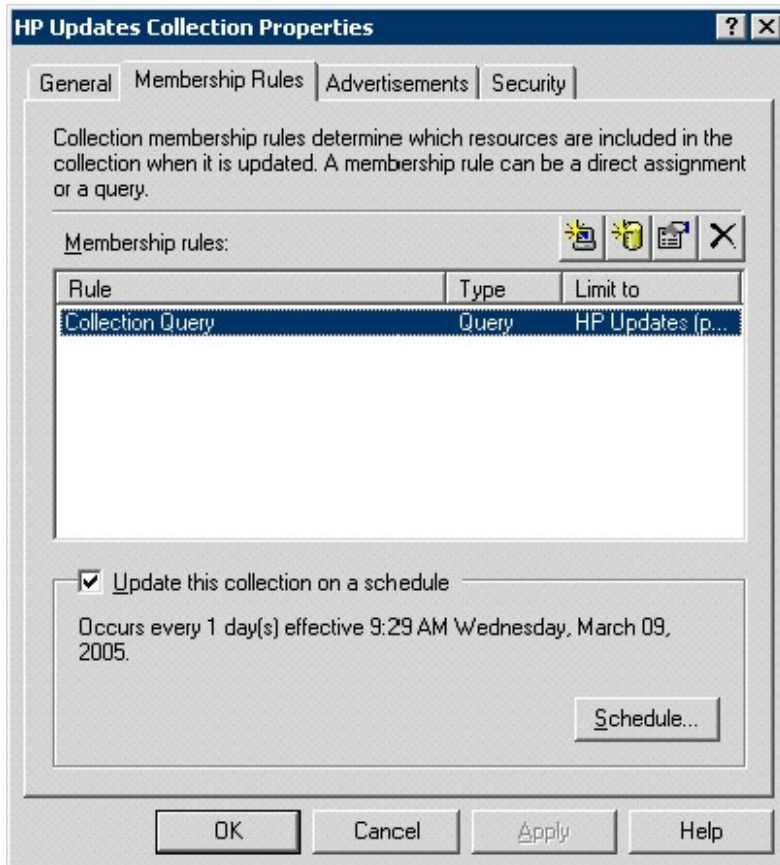
The HP Updates collection (on page 9) is set to "Limit to collection" and contains only the test server that was specified during installation. This option enables you to verify that the scan tool is functioning properly on the test system before deploying the scan tool to production systems. To advertise the scan tool to the entire SMS environment, the option must be disabled:

1. Verify that the scan tool is properly running by verifying the status of the advertisement or by reviewing the software update reports. For information on the reports available, see the *SMS Inventory Tool for HP ProLiant and Integrity Update User Guide*.
2. In the SMS Administrator console, select **Systems Management Server>Site Database>Collections**.



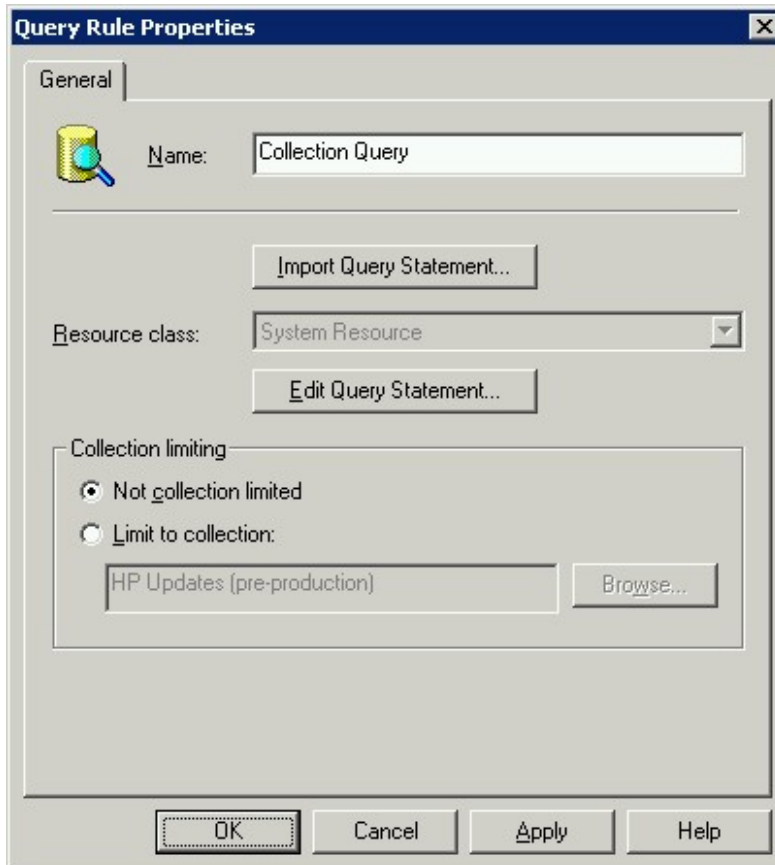
Name	Collection ID
All Systems	SMS00001
All User Groups	SMS00003
All Users	SMS00002
All Windows 2000 Professional Systems	SMS00005
All Windows 2000 Server Systems	SMS00004
All Windows 98 Systems	SMS00006
All Windows NT Systems	SMS00007
All Windows NT Workstation 4.0 Systems	SMS00008
All Windows Server 2003 Systems	SMS00009
All Windows Server Systems	SMS00005
All Windows Workstation or Professional Systems	SMS00004
All Windows XP Systems test	SMS00005
HP Servers	0010015E
HP Updates	00100167
HP Updates (pre-production)	00100166
HP Updates Sync	00100168
OfficeInventory	0010000E
OfficeInventory (pre-production)	0010000D
OfficeInventory Sync Host	0010000F
SecurityPatch	00100011
SecurityPatch (pre-production)	00100010
SecurityPatch Sync Host	00100012

3. Right-click **HP Updates collection**, and select **Properties**. The HP Updates Collection Properties dialog box appears.



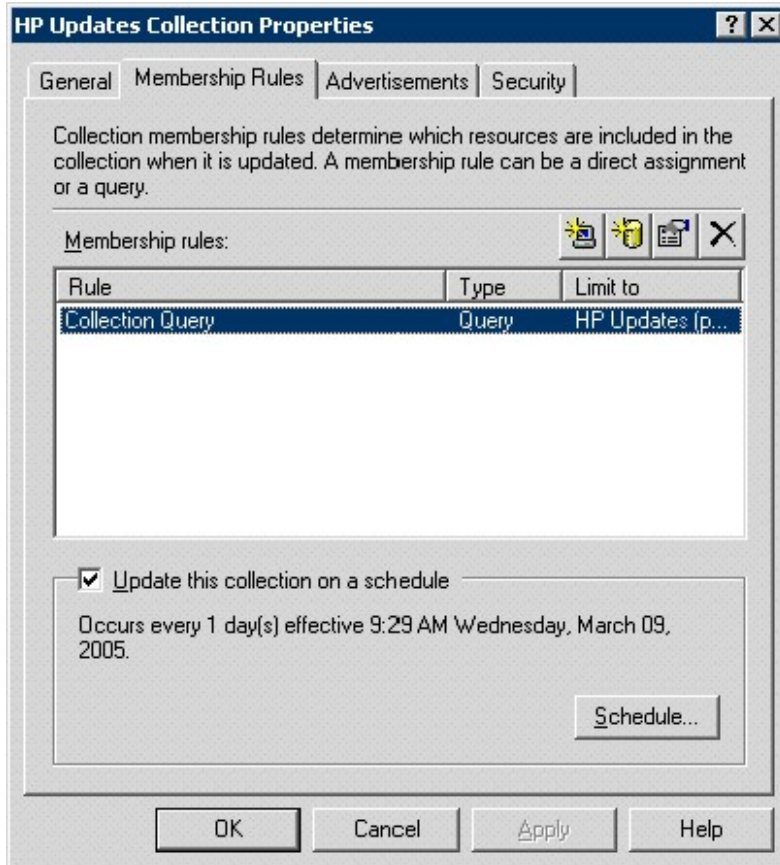
4. In the Membership Rules tab, right-click **Collection Query**, and select **Properties**.

5. Select **Not collection limited**, and then click **OK**.

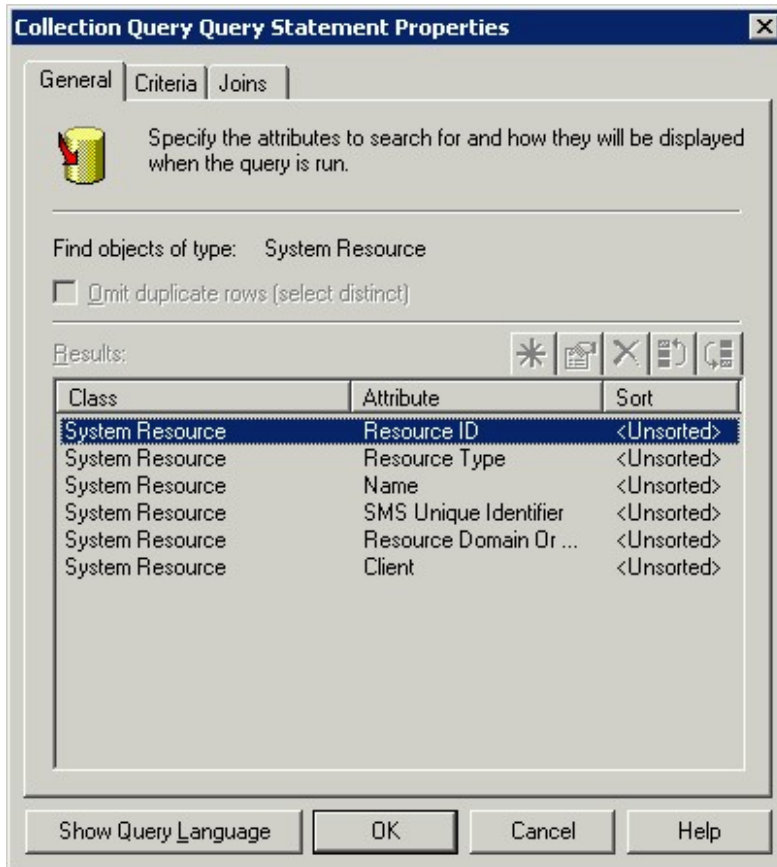


6. Click **OK** in the HP Updates Collection Properties dialog box.
7. Click **HP Updates collection** in the left pane of the SMS Administrator console, and verify that all systems to be managed are listed in the right pane. If any systems are missing, proceed with step 8 to modify the query statement. If all systems are present, proceed with step 11.

- Right-click **HP Updates collection**, and select **Properties**. The HP Updates Collection Properties dialog box appears.

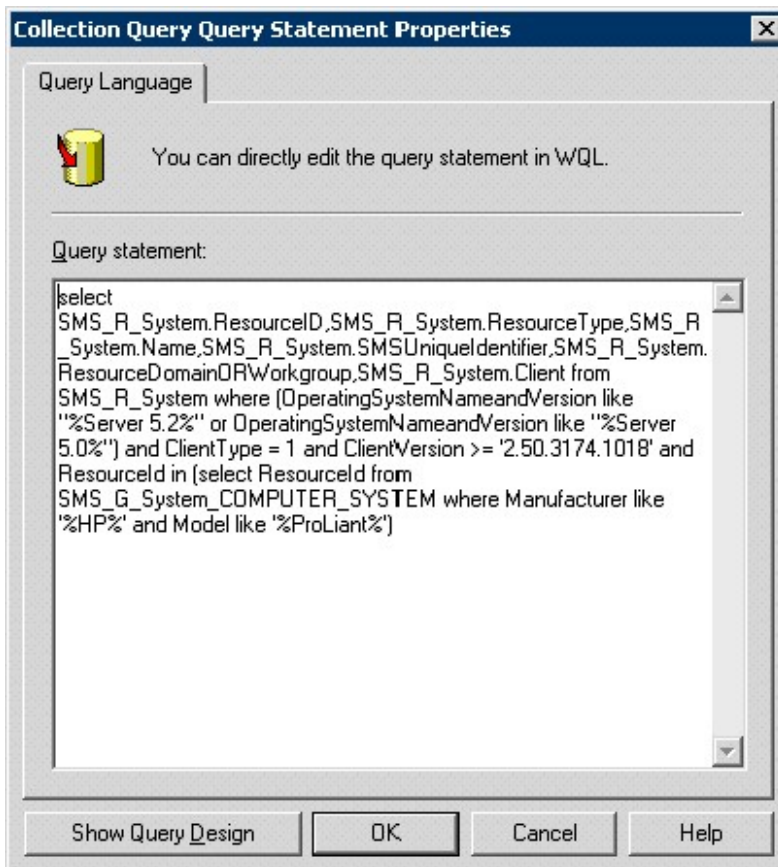


9. In the Membership Rules tab, right-click **Collection Query**, and select **Properties**. The Collection Query Query Statement Properties dialog box appears.

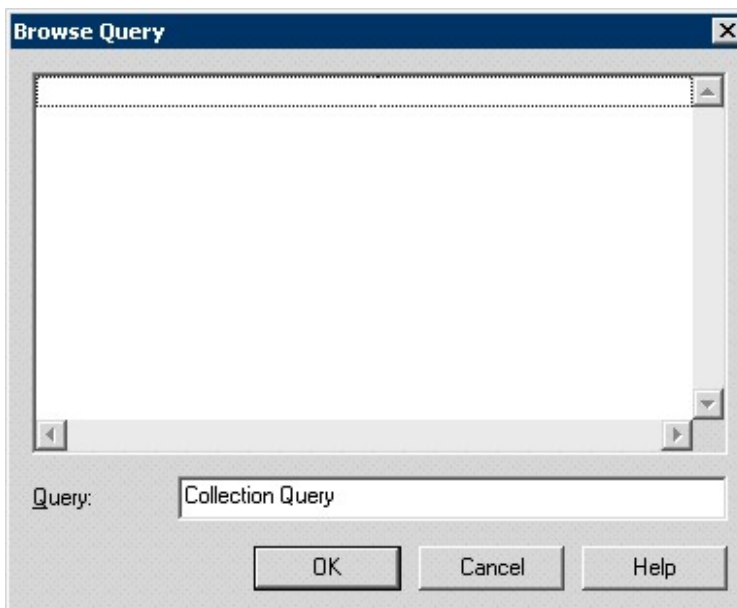


To modify the query statement, do one of the following:

- Click **Edit Query Statement** to edit the existing query, and add new systems to the collection. The Collection Query Query Statement Properties dialog box appears. Click **Show Query Design**, and then modify the query statement.



- Click **Import Query Statement** to import the query statement of an existing collection. In the Browse Query dialog box, select a collection query statement, and then click **OK**.



- In the Query Rule Properties dialog box, click **OK**.
- In the HP Updates Collection Properties dialog box, click **OK**.



NOTE: In addition to modifying existing collections, new collections can be created. For more information, see the Microsoft® website (<http://www.microsoft.com/smsserver/techinfo/productdoc>).

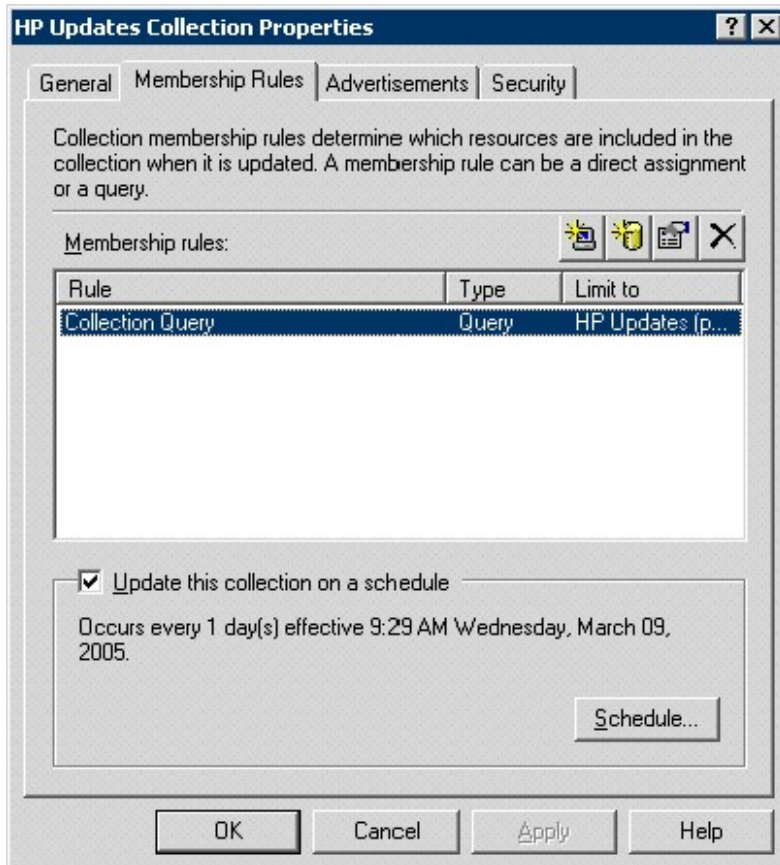
Modifying the list of scanned systems

If the installation has proceeded normally, the query statement that performs collections accurately represents the servers in the collection. However, the statement might need to be modified if new HP servers are released and should be added to the collection. To modify the list of scanned systems on which the scan tool runs:

1. In the SMS Administrator console, select **Systems Management Server>Site Database>Collections**.

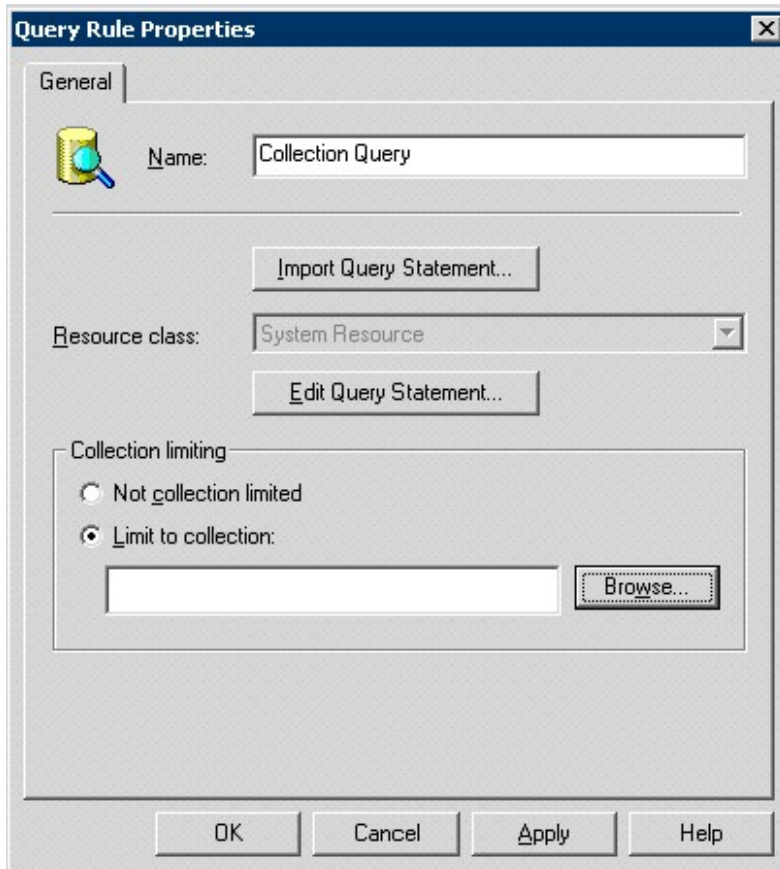
Name	Collection ID
All Systems	SMS00001
All User Groups	SMS00003
All Users	SMS00002
All Windows 2000 Professional Systems	SMS00005
All Windows 2000 Server Systems	SMS00005
All Windows 98 Systems	SMS00006
All Windows NT Systems	SMS00005
All Windows NT Workstation 4.0 Systems	SMS00008
All Windows Server 2003 Systems	SMS00005
All Windows Server Systems	SMS00005
All Windows Workstation or Professional Systems	SMS00004
All Windows XP Systems test	SMS00005
HP Servers	0010015E
HP Updates	00100167
HP Updates (pre-production)	00100166
HP Updates Sync	00100168
OfficeInventory	0010000E
OfficeInventory (pre-production)	0010000D
OfficeInventory Sync Host	0010000F
SecurityPatch	00100011
SecurityPatch (pre-production)	00100010
SecurityPatch Sync Host	00100012


- Right-click **HP Updates collection**, and select **Properties**. The HP Updates Collection Properties dialog box appears.



- In the Membership Rules tab, right-click **Collection Query**, and select **Properties**.

4. Select **Limit to collection**, and then click **Browse**.

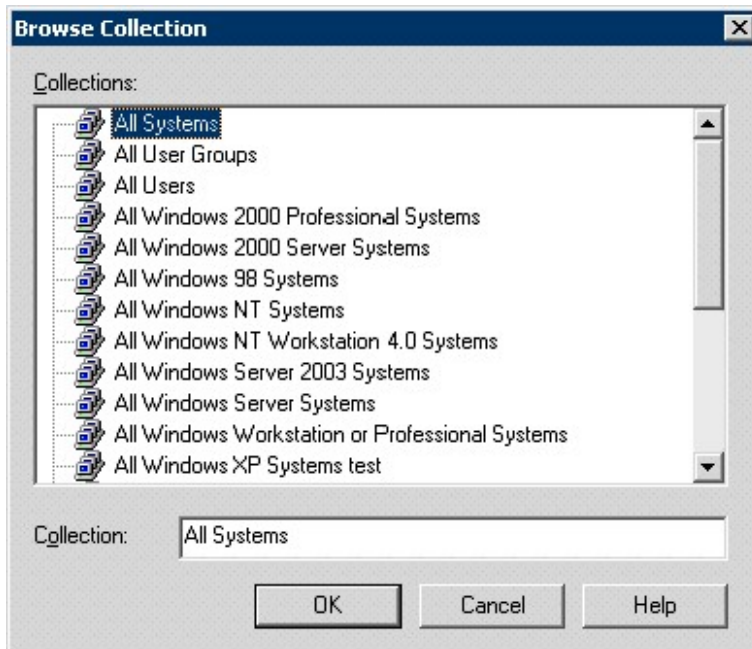


 **IMPORTANT:** This collection can also be configured by using the Collection Query membership rule. The membership rule is a query statement that can be modified to add or remove computers from the collection. To run the scan tool on the systems specified by this query statement, set the collection limiting option to **Not collection limited**.

5. Select the collection to scan, and click **OK**.



NOTE: Listing HP Integrity servers by operating system will not differentiate between Microsoft® Windows Server™ 2003 Enterprise Edition or Microsoft® Windows Server™ 2003 Datacenter Edition.



6. In the Query Rule Properties dialog box, click **OK**.
7. In the HP Updates Collection Properties dialog box, click **OK**.

Running the hpCplVerify.exe utility on Itanium servers

Users of the initial release of Windows Server™ 2003 for 64-bit Itanium-based Systems must first run the hpCplVerify.exe utility to access SMS clients from the Control Panel. The Control Panel of early versions of Windows Server™ 2003 does not contain the View x86 icons folder. To add access to the SMS clients from the Control Panel:



NOTE: This utility is for 64-bit machines only. Executing this utility on a 32-bit machine triggers the error message, "The image file C:\hpCplVerify.exe is valid, but is for a machine type other than the current machine."

1. Locate the file hpCplVerify.exe in the directory C:\Program Files\SMS Inventory Tool for HP Update\Tools of the SMS server.
2. Copy the file to the hard drive of the SMS client.
3. On the SMS client, go to the command prompt, change to the location where the file was copied, and execute the file.
4. On the SMS client, access the Control Panel, and confirm that the View x86 icons folder displays. Double-click **View X86 icons** to view the System Management icon.
5. Double-click **System Management** to confirm the icons display.

Reviewing installation results

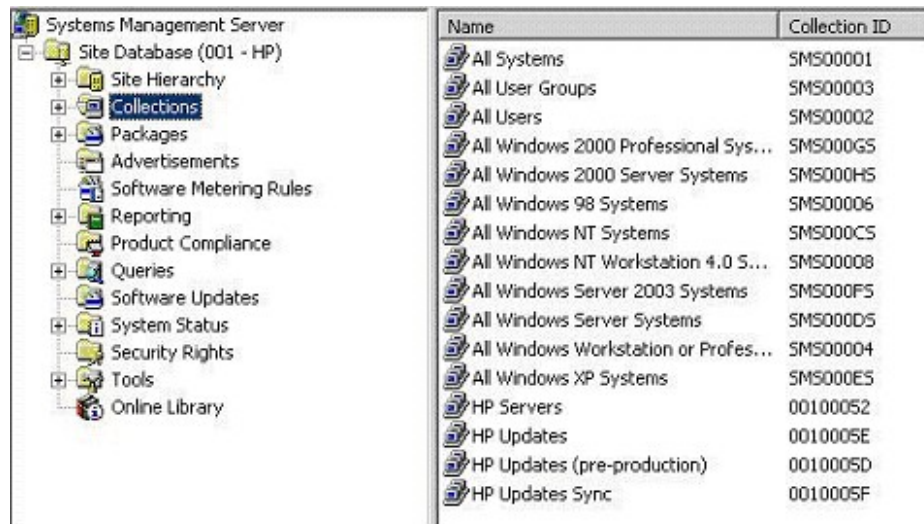
When the setup process completes, the package name, the collection names, and the advertisement names created during this process will be prefixed with the name specified in the distribution settings.



CAUTION: Do not rename the package or move the source folder after installation completes. Doing so might result in data loss and system failure.

To view the package, collections, and advertisements created by the setup wizard:

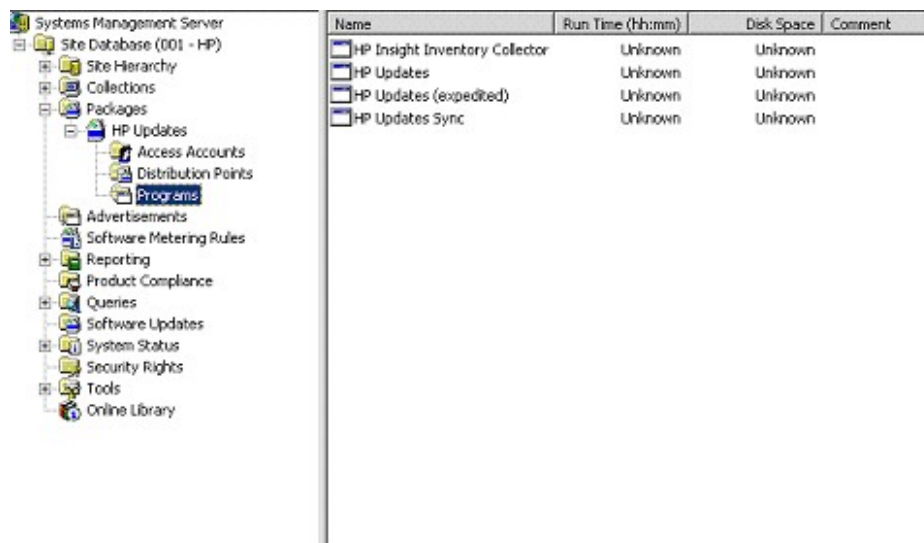
1. Click **Site Database** in the SMS Administrator console.
2. Click **Collections** to view all collections in the right pane of the SMS Administrator console.



3. Click **Packages** to view the packages in the right pane of the SMS Administrator console.
4. Click **Advertisements** to view the advertisements in the right pane of the SMS Administrator console.

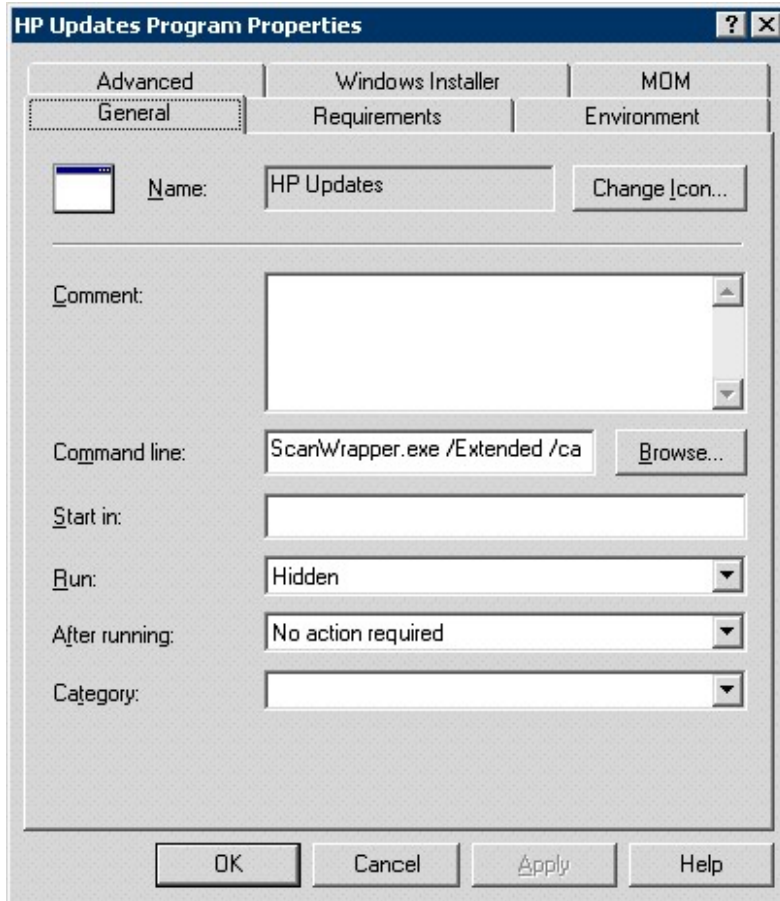
To view the programs associated with the packages:

1. Click **Packages** to expand the list.
2. Select the appropriate package, and then click **Programs** to view the programs in the right pane of the SMS Administrator console.



To view the properties associated with any collection, package, advertisement, or program:

1. Right-click the item, and then select **Properties**. The Properties dialog box appears for the item selected.



2. Click **Cancel** to close the Properties window.

Acronyms and abbreviations

ASR

Automatic Server Recovery

DSUW

Distribute Software Updates Wizard

HTTP

hypertext transfer protocol

MIF

Management Information Format

OS

operating system

SIM

Systems Insight Manager

SMS

System Management Server

SNMP

Simple Network Management Protocol

SP1

Service Pack 1

SP2

Service Pack 2

SP4

Service Pack 4

SQL

structured query language

WMI

Windows Management Instrumentation

Index

A

advertisement properties, viewing 35
 advertisement, HP Updates 9
 advertisement, HP Updates Sync 9
 advertisements, list of 9
 attended mode 15
 audience assumptions 5

C

catalog 13, 14, 16
 catalog, managing downloads 13, 14, 16
 catalog, obtaining with an Internet connection 13
 catalog, obtaining with the sync tool 16
 catalog, obtaining without an FTP connection 14
 central site 6
 Collect utility 7, 8
 collection properties, viewing 35
 collection, HP Servers 9, 10
 collection, HP Updates 9
 collection, HP Updates (pre-production) 9, 10
 collection, HP Updates Sync 9, 10
 collection, Integrity servers 10
 collection, ProLiant servers by model 10
 collection, ProLiant servers by OS 10
 collections, list of 9
 collections, renaming existing 9, 16
 components, installation 7
 components, software 7

H

hotfixes 7, 12
 HP Insight Inventory Collector 7, 8
 HP manifest catalog 7, 13, 14, 15, 16
 HP manifest catalog, managing downloads 13, 14, 16
 HP manifest catalog, obtaining with an Internet connection 13, 14
 HP manifest catalog, obtaining with the sync tool 16
 HP Servers collection 10
 HP Updates (expedited) program 8
 HP Updates (pre-production) collection 9, 10

HP Updates advertisement 9
 HP Updates collection 9
 HP Updates collection, updating 26
 HP Updates program 8
 HP Updates Sync advertisement 9
 HP Updates Sync collection 9, 10
 HP Updates Sync program 8
 hpCplVerify.exe utility, error message 35
 hpCplVerify.exe utility, running 35
 hpSMSTool utility 7

I

identifying servers to manage 26
 installation checklist 12
 installation components 7
 installation instructions 12, 16, 23
 installation overview 12
 installation results 35

M

management pack overview 4
 modes, scan tool 15
 modes, sync tool 15

O

overview, installation 12
 overview, management pack 4
 overview, product 4

P

package properties, viewing 35
 packages 7, 8, 16
 packages, renaming existing 8, 16
 post-installation procedures 26
 preinstallation checklist 12, 16, 23
 preinstallation guidelines 12, 16
 primary site 6
 product overview 4
 program properties, viewing 35
 program, HP Update 8
 program, HP Update (expedited) 8
 program, HP Updates Sync 8

programs, list of 8

R

reports 7, 11

S

scan tool modes 15

scan tool overview 7

scan tool, advertising 26

scanning servers 32

secondary site 6

servers, identifying 26

servers, modifying list of scanned 32

servers, scanning for 32

setup wizard, using 16, 23

site hierarchy 6

site server selection 13

SMS client server 6

SMS site hierarchy 6

SMS site server 6

SMS site server, selecting 13

SMSITHU.msi 7, 16, 23

software components 7

software update reports 11

sync host 15

sync tool mode 15

sync tool overview 7

sync tool, obtaining catalog with 16

U

unattended mode 15

updating collections 26

utilities, Collect 7, 8

utilities, hpCplVerify.exe 35

utilities, hpSMSTool 35

V

viewing advertisement properties 35

viewing collection properties 35

viewing package properties 35

viewing program properties 35

W

Windows operating systems 10