

# **Modem and Local Area Networks**

Document Part Number: 383057-002

October 2005

---

# Contents

## 1 Modem

Using the modem cable . . . . .	2
Using a country-specific modem cable adapter . . . . .	3
Modem country selection . . . . .	4
Viewing the current country selection . . . . .	4
Adding new locations when traveling . . . . .	4
Solving travel connection problems . . . . .	6
Preinstalled communication software . . . . .	8

## 2 Local area networks

# 1

---

## Modem

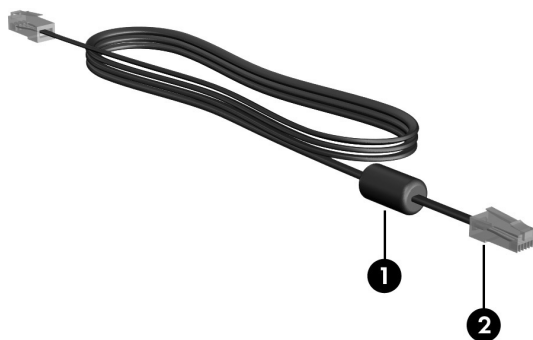
The computer's internal modem is connected to an analog telephone line by means of a 6-pin, RJ-11 modem cable. In some countries, a country-specific modem cable adapter is also required. Jacks for digital PBX systems may resemble analog telephone jacks, but they are not compatible with the modem.



**WARNING:** Connecting the computer's analog modem to a digital line can permanently damage the modem. Immediately disconnect your modem cable if you accidentally connect it to a digital line.

---

If the modem cable contains noise suppression circuitry **1**, which prevents interference from TV and radio reception, orient the circuitry end **2** of the cable toward the computer.



---

Your computer may look different from the illustrations in this guide. The location of the modem jack varies by model.

---

## Using the modem cable

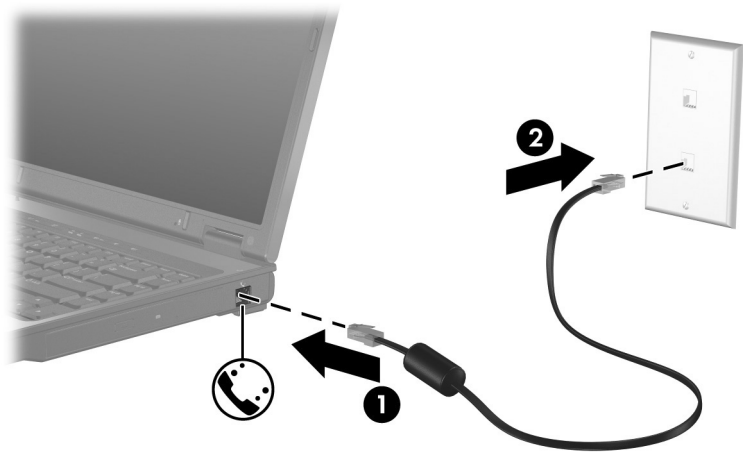


**WARNING:** To reduce the risk of electric shock, fire, or damage to the equipment, do not plug a modem or telephone cable into the RJ-45 (network) jack.

---

To connect a modem cable:

1. Plug the modem cable into the modem jack **1** on the computer.
2. Plug the modem cable into the RJ-11 telephone wall jack **2**.



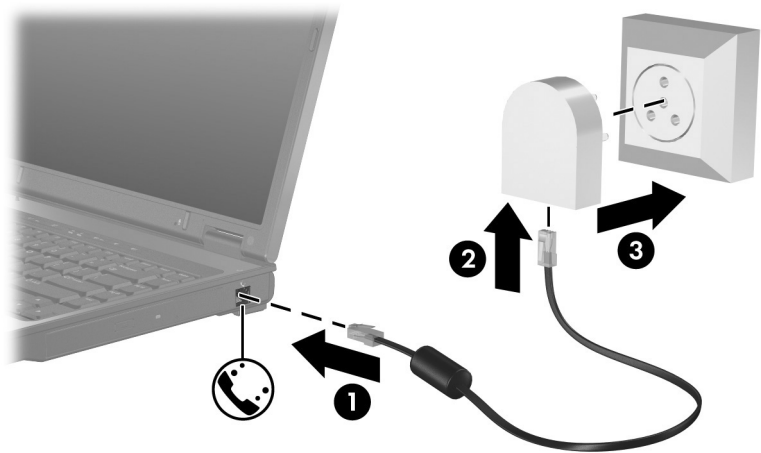
On select models, information about modem commands and dial modifiers is included in the modem guides located in the Help and Support Center. Select **Start > Help and Support > User Guides**.

## Using a country-specific modem cable adapter

Telephone jacks vary by country. To use the modem and the modem cable outside the country in which you purchased the computer, you must obtain a country-specific modem cable adapter.

To connect the modem to an analog telephone line that does not have an RJ-11 telephone jack:

1. Plug the modem cable into the modem jack **1** on the computer.
2. Plug the modem cable into the country-specific modem cable adapter **2**.
3. Plug the country-specific modem cable adapter **3** into the telephone wall jack.



# Modem country selection

## Viewing the current country selection

To view the current country setting for your modem:

1. Select **Start > Control Panel**.
2. Click the **Date, Time, Language, and Regional Options** icon.
3. Click the **Regional & Language Options** icon.
4. Under **Location**, view your present location.

## Adding new locations when traveling

By default, the only location setting available to your modem is a location setting for the country in which you purchased the computer. As you travel to different countries, set the internal modem to a location setting that meets the operating standards of the country in which you are using the modem.

As you add new location settings, they are saved by your computer so that you can switch among settings at any time. You can add multiple location settings for any country.



**CAUTION:** To prevent losing your home country settings, do not delete your current modem country settings. To enable modem use in other countries while preserving your home country configuration, add a new configuration for each location in which you will use the modem.

---



**CAUTION:** To prevent configuring your modem in a way that violates the telecommunications regulations and laws of the country you are visiting, select the country in which your computer is located. In addition, your modem may not function properly if the correct country selection is not made.

---

To add a location setting for your modem:

1. Select **Start > Control Panel > Network and Internet Connections**.
2. On the upper menu in the left panel of the Network and Internet Connections window, click **Phone and Modem Options**.
3. On the **Dialing Rules** tab, click **New**. (The New Location window is displayed.)
4. In the **Location name** box, type a name (home, work, etc.) for the new location setting.
5. Click a country or region from the **Country/Region** drop-down list. (If you select a country or region that is not supported by the modem, the Country/Region selection for *USA* or *UK* is displayed by default.)
6. Click **OK** to save your new location setting. (The Dialing Rules window is displayed.) Then
  - To set your new location setting as the current location, click **OK**.
  - To select another location setting as the current location setting, select your preference from the settings in the **Location** list, and then click **OK**.



You can use the preceding procedure to add location settings for places within your own country as well as in other countries. For example, you could add a setting named “Work” that includes dialing rules for accessing an outside line.

---

## Solving travel connection problems

If you experience modem connection problems when using the computer outside of the country in which you purchased it, try the following suggestions.

### ■ Check the telephone line type.

The modem requires an analog, not a digital, telephone line. A line described as a PBX line is usually a digital line. A telephone line described as a data line, fax machine line, modem line, or standard telephone line is probably an analog line.

### ■ Check for pulse or tone dialing.

An analog telephone line supports one of 2 dialing modes, pulse dialing or tone dialing. These dialing mode options are selected in the Phone and Modem Options settings. The dialing mode option selected must match the dialing mode supported by the telephone line in your location.

To determine the dialing mode supported by a telephone line, dial a few digits on the telephone, and then listen for clicks (pulses) or tones. Clicks indicate that the telephone line supports pulse dialing. Tones indicate that the telephone line supports tone dialing.

To change the dialing mode in your current modem location setting:

1. Select **Start > Control Panel > Network and Internet Connections**.
2. On the upper menu in the left panel of the Network and Internet Connections window, click **Phone and Modem Options**.
3. Click the **Dialing Rules** tab.
4. Click your modem location setting.



5. Click **Edit**.
6. Click either **Tone** or **Pulse**.
7. Select **OK > OK**.

■ **Check the telephone number you are dialing and the response of the remote modem.**

Dial a telephone number, make sure there is a response from the remote modem, and then hang up.

■ **Set the modem to ignore dial tones.**

If the modem receives a dial tone it does not recognize, it does not dial and displays a “No Dial Tone” error message.

To set the modem to ignore all dial tones before dialing:

1. Select **Start > Control Panel > Network and Internet Connections**.
2. On the upper menu in the left panel of the Network and Internet Connections window, click **Phone and Modem Options**.
3. Click the **Modems** tab.
4. Click the listing for your modem.
5. Click **Properties**.
6. Click **Modem**.
7. Clear the check box for **Wait for dial tone before dialing**.
8. Select **OK > OK**.

If you continue to receive the “No Dial Tone” error message after clearing the **Wait for Dial Tone Before Dialing** check box:

1. Select **Start > Control Panel > Network and Internet Connections**.
2. On the upper menu in the left panel of the Network and Internet Connections window, click **Phone and Modem Options**.
3. Click the **Dialing Rules** tab.
4. Click your current modem location setting.
5. Click **Edit**.
6. Select your current location from the **Country/Region** drop-down list. If you select a country or region that is not supported by the modem, the Country/Region selection for *USA* or *UK* is displayed by default.
7. Select **Apply > OK**.
8. In the Phone and Modem Options window, click the **Modems** tab.
9. Click the listing for your modem, and then click **Properties**.
10. Clear the check box for **Wait for dial tone before dialing**.
11. Select **OK > OK**.

## **Preinstalled communication software**

To use preinstalled modem software for terminal emulation and data transfer:

1. Select **Start > All Programs > Accessories > Communications**.
2. Click the appropriate fax or terminal emulation program or Internet connection wizard.

# 2

---

## Local area networks

Connecting to a local area network (LAN) requires an 8-pin, RJ-45 network cable. If the network cable contains noise suppression circuitry ❶, which prevents interference from TV and radio reception, orient the circuitry end of the cable ❷ toward the computer.

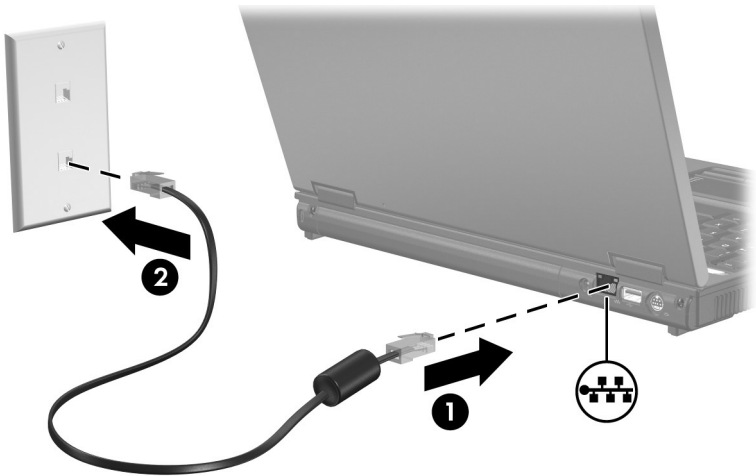


Your computer may look different from the illustrations in this guide. The location of the network jack varies by model.

---

To connect the network cable:

1. Plug the network cable into the network jack **1** on the computer.
2. Plug the other end of the cable into a network wall jack **2**.



**WARNING:** To reduce the risk of electric shock, fire, or damage to the equipment, do not plug a modem or telephone cable into the RJ-45 (network) jack.

---

© Copyright 2005 Hewlett-Packard Development Company, L.P.

The information contained herein is subject to change without notice. The only warranties for HP products and services are set forth in the express warranty statements accompanying such products and services. Nothing herein should be construed as constituting an additional warranty. HP shall not be liable for technical or editorial errors or omissions contained herein.

Modem and Local Area Networks

Second Edition October 2005

First Edition May 2005

Document Part Number: 383057-002