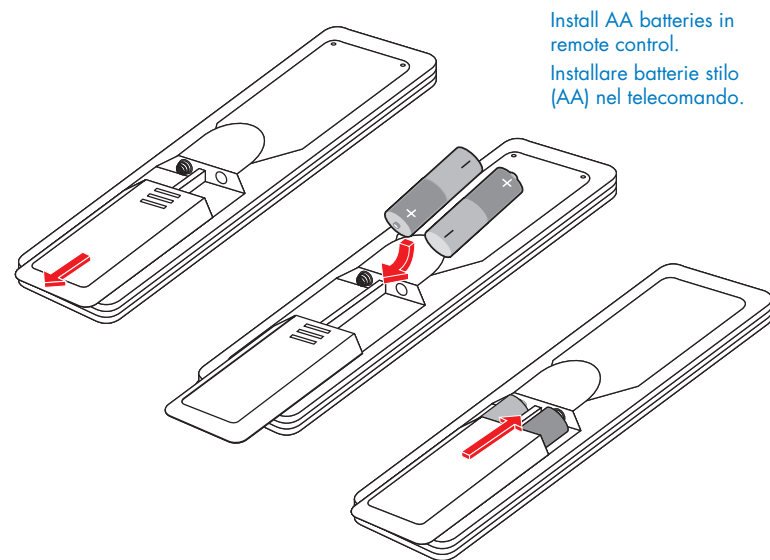


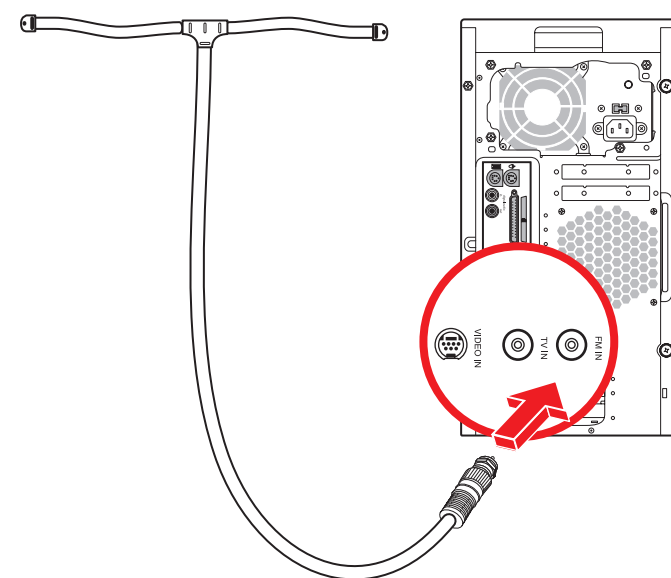
7 Remote Control Telecomando



Install AA batteries in remote control.
Installare batterie stilo (AA) nel telecomando.

8 FM antenna Antenna FM

Select models only
FM signal to computer
Solo su alcuni modelli
Segnale FM al computer

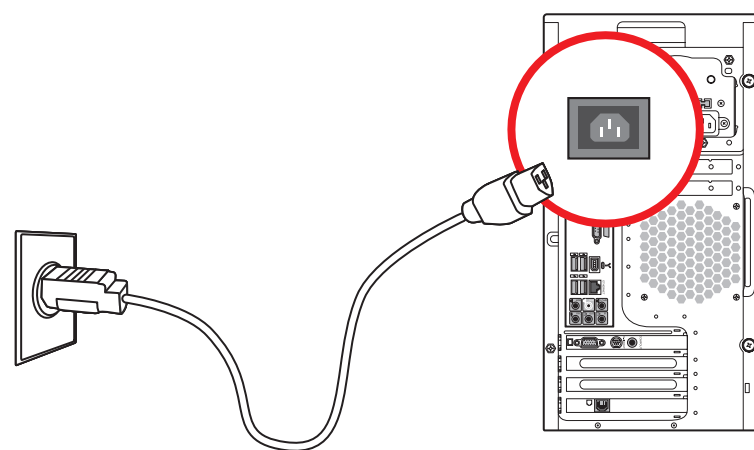


9 Power Connection Collegamento all'alimentazione

Computer to electrical outlet
Grounded connection or connection to surge protector is recommended.

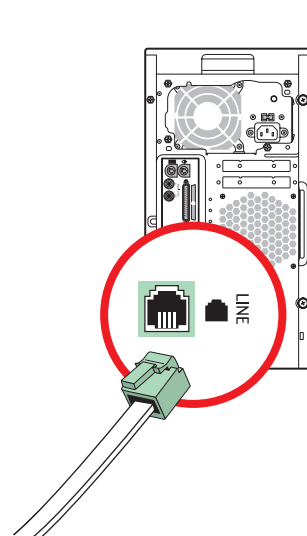
Collegamento all'alimentazione

Dal computer alla presa elettrica
Si raccomanda un collegamento con messa a terra o un collegamento con protezione da sovratensioni.

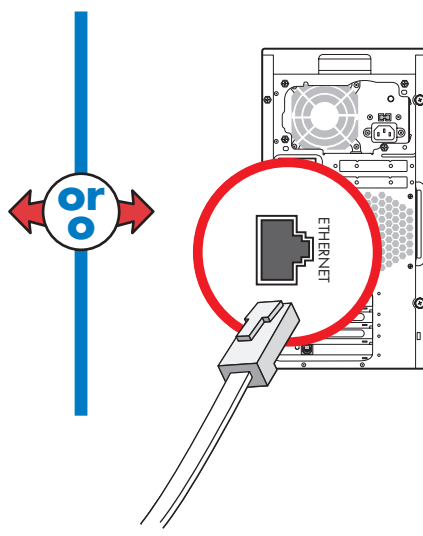


10 Modem / LAN Modem / LAN

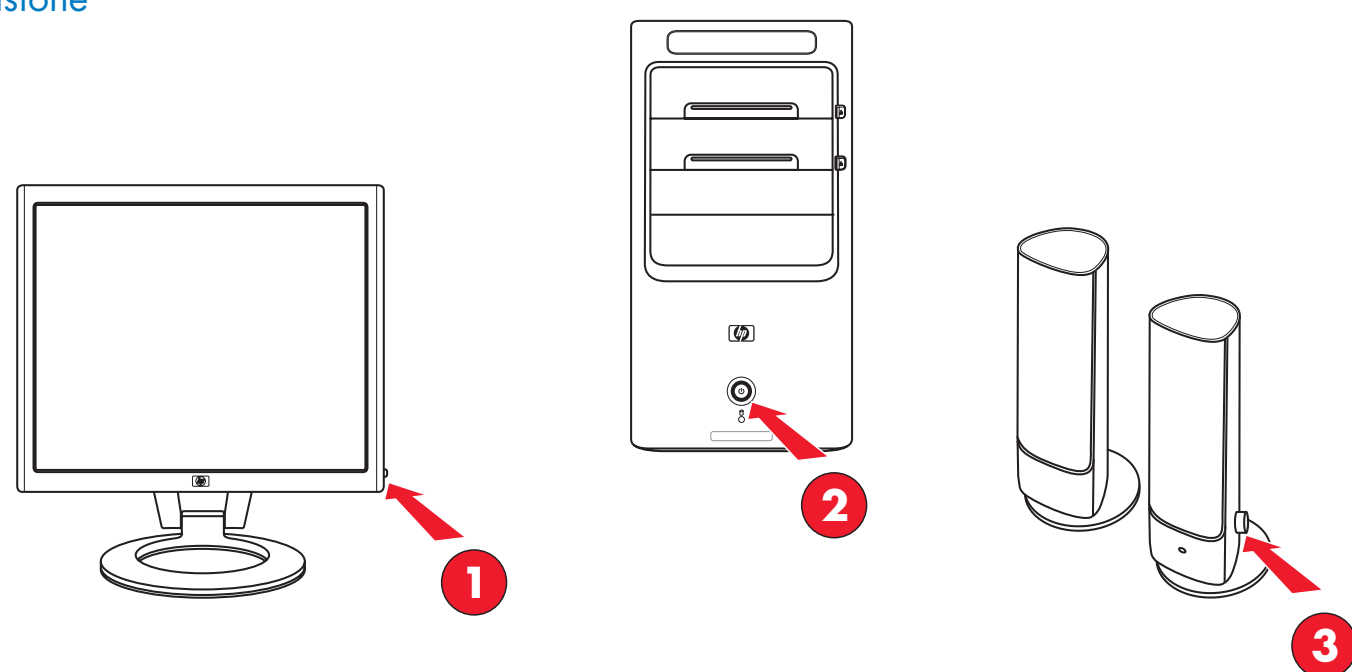
Connect modem cable to computer.
Select models only.
Collegare il cavo del modem al computer. Solo su alcuni modelli.



Connect your Ethernet cable to computer. Cable not included.
Collegare il cavo Ethernet al computer. Cavo non incluso.



11 Power On Accensione

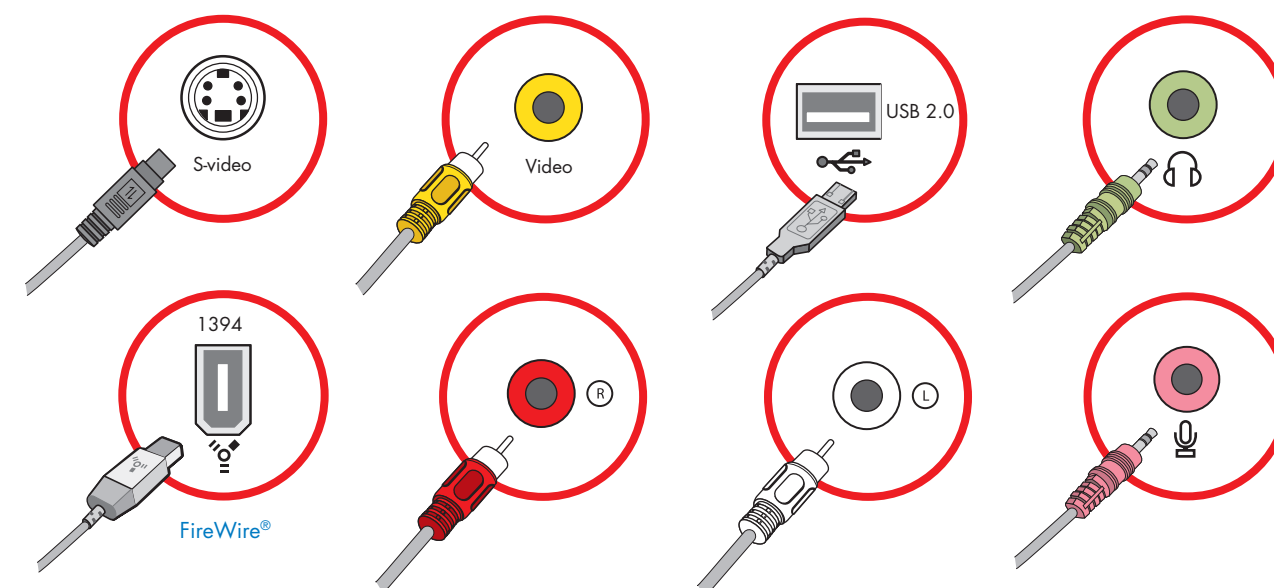


Turn on monitor, computer, and sound system.
Accendere il monitor, il computer e gli altoparlanti.

Your PC may look different from the ones shown here. Component, connector location, type, and number vary by model.

È possibile che il computer non corrisponda ai modelli illustrati di seguito. La posizione, il tipo e il numero di connettori e dispositivi variano a seconda del modello.

PC Front Panel Connectors Connettori del pannello frontale del computer



PC Rear Panel Connectors Connettori del pannello posteriore del computer

