

Security

User Guide

© Copyright 2007 Hewlett-Packard
Development Company, L.P.

Windows is a U.S. registered trademark of
Microsoft Corporation.

The information contained herein is subject
to change without notice. The only
warranties for HP products and services are
set forth in the express warranty statements
accompanying such products and services.
Nothing herein should be construed as
constituting an additional warranty. HP shall
not be liable for technical or editorial errors
or omissions contained herein.

First Edition: January 2007

Document Part Number: 419772-001

Table of contents

1 Protecting the computer

2 Using passwords

Setting passwords in Windows	3
Using QuickLock	3
Setting passwords in Setup Utility	3
Administrator password	3
Managing an administrator password	4
Entering an administrator password	4
Power-on password	4
Managing a power-on password	5
Entering a power-on password	5

3 Using antivirus software

4 Using firewall software

5 Installing critical security updates

6 Installing an optional security cable

7 Using the fingerprint reader (select models only)

Locating the fingerprint reader	11
Registering fingerprints	11
Step 1: Set up the fingerprint reader	12
Step 2: Use your registered fingerprint to log on to Windows	12

Index	13
-------------	----

1 Protecting the computer

Standard security features provided by the Windows® operating system and the non-Windows Setup Utility can protect your personal settings and data from a variety of risks.

Follow the procedures in this guide to use the following features:

- Passwords
- Antivirus software
- Firewall software
- Critical security updates
- Optional security cable
- Fingerprint reader (select models only)



NOTE Security solutions are designed to act as deterrents, but they may not be able to deter software attacks or prevent the computer from being mishandled or stolen.

NOTE Before you send your computer for service, remove all password and fingerprint settings.

Computer risk	Security feature
Unauthorized use of the computer	<ul style="list-style-type: none">• QuickLock• Power-on password
Computer viruses	Norton Internet Security software
Unauthorized access to data	<ul style="list-style-type: none">• Firewall software• Windows updates
Unauthorized access to Setup Utility, BIOS settings, and other system identification information	Administrator password
Ongoing or future threats to the computer	Critical security updates from Microsoft
Unauthorized access to a Windows user account	User password
Unauthorized removal of the computer	Security cable slot (used with an optional security cable)

2 Using passwords

A password is a group of characters that you choose to secure your computer information. Several types of passwords can be set, depending on how you want to control access to your information. Passwords can be set in Windows or in the non-Windows Setup Utility preinstalled on the computer.



CAUTION To prevent being locked out of the computer, record each password you set. Because most passwords are not displayed as they are set, changed, or deleted, it is essential to record each password immediately and store it in a secure place.

You can use the same password for a Setup Utility feature and for a Windows security feature. You can also use the same password for more than one Setup Utility feature.

Use the following guidelines when setting a password in Setup Utility:

- A password can be any combination of up to 8 letters and numbers and is not case sensitive.
- A password must be set and entered with the same keys. For example, if you set a password with keyboard number keys, your password will not be recognized if you subsequently try to enter it with the embedded numeric keypad.



NOTE Select models include a separate numeric keypad, which functions exactly like the keyboard number keys.


- A password must be entered at a Setup Utility prompt. A password set in Windows must be entered at a Windows prompt.

Use the following tips for creating and saving passwords:

- When creating passwords, follow requirements set by the program.
- Write down your passwords and store them in a secure place away from the computer.
- Do not store passwords in a file on the computer.
- Do not use your name or other personal information that could be easily discovered by an outsider.

The following tables list Windows and Setup Utility passwords and describe their functions. For additional information about Windows passwords, such as screen-saver passwords, select **Start > Help and Support**.

Setting passwords in Windows

Password	Function
Administrator password	Protects administrator-level access to computer contents.  NOTE This password cannot be used to access Setup Utility contents.
User password	Protects access to a Windows user account. It also protects access to the computer contents and must be entered when you exit Sleep or Hibernation.
QuickLock	Protects access to the computer by displaying the Windows operating system Log On dialog box.



Using QuickLock

QuickLock protects the computer by requiring a password to be entered in the Windows Log On dialog box before you access the computer.

Before you can use QuickLock, you must set a user password or administrator password in Windows. After you set a user or administrator password, follow these steps:

1. Initiate QuickLock by pressing **fn+f6**.
2. Exit QuickLock by entering your Windows user or administrator password.

Setting passwords in Setup Utility

Password	Function
Administrator password*	<ul style="list-style-type: none">• Protects access to Setup Utility.• After this password is set, it must be entered each time you access Setup Utility.  CAUTION If you forget your administrator password, you cannot access Setup Utility.
Power-on password*	<ul style="list-style-type: none">• Protects access to the computer contents.• After this password is set, it must be entered each time you turn on or restart the computer, or exit Hibernation.  CAUTION If you forget your power-on password, you cannot turn on or restart the computer, or exit Hibernation.

*For details about each of these passwords, refer to the following sections.

Administrator password

Your administrator password protects the configuration settings and system identification information in Setup Utility. After this password is set, you must enter it each time you access Setup Utility.

Your administrator password is not interchangeable with an administrator password set in Windows, nor is it displayed as it is set, entered, changed, or deleted. Be sure that you record your password and store it in a safe place.

Managing an administrator password

To set, change, or delete this password:

1. Open Setup Utility by turning on or restarting the computer, and then pressing **f10** while the setup message is displayed in the lower-left corner of the screen.
2. Use the arrow keys to select **Security > Administrator Password**, and then press **enter**.
 - To set an administrator password, type your password in the **Enter New Password** and **Confirm New Password** fields, and then press **enter**.
 - To change an administrator password, type your current password in the **Enter Current Password** field, type a new password in the **Enter New Password** and **Confirm New Password** fields, and then press **enter**.
 - To delete an administrator password, type your current password in the **Enter Password** field, and then press **enter** 4 times.
3. To save your preferences and exit Setup Utility, press **f10**, and then follow the instructions on the screen.

Your preferences go into effect when the computer restarts.

Entering an administrator password

At the **Enter Password** prompt, type your administrator password (using the same kind of keys you used to set the password), and then press **enter**. After 3 unsuccessful attempts to enter the administrator password, you must restart the computer and try again.

Power-on password

Your power-on password prevents unauthorized use of the computer. After this password is set, it must be entered each time you turn on or restart the computer, or exit Hibernation. A power-on password is not displayed as it is set, entered, changed, or deleted.

Managing a power-on password

To set, change, or delete this password:

1. Open Setup Utility by turning on or restarting the computer, and then pressing **f10** while the setup message is displayed in the lower-left corner of the screen.
2. Use the arrow keys to select **Security > Power-On Password**, and then press **enter**.
 - To set a power-on password, type your password in the **Enter New Password** and **Confirm New Password** fields, and then press **enter**.
 - To change a power-on password, type your current password in the **Enter Current Password** field, type a new password in the **Enter New Password** and **Confirm New Password** fields, and then press **enter**.
 - To delete a power-on password, type your current password in the **Enter Current Password** field, and then press **enter** 4 times.
3. To save your preferences and exit Setup Utility, press **f10**, and then follow the instructions on the screen.

Your preferences go into effect when the computer restarts.

Entering a power-on password

At the **Enter Password** prompt, type your password (using the same keys you used to set the password), and then press **enter**. After 3 unsuccessful attempts to enter the password, you must restart the computer and try again.

3 Using antivirus software

When you use the computer for e-mail, network, or Internet access, you expose it to computer viruses. Computer viruses can disable the operating system, applications, or utilities, or cause them to function abnormally.

Antivirus software can detect most viruses, destroy them, and in most cases, repair any damage they have caused. To provide ongoing protection against newly discovered viruses, antivirus software must be kept up to date.

Norton Internet Security, an antivirus program, is preinstalled on the computer. The software includes 60 days of free updates. It is strongly recommended that you protect the computer against new viruses beyond 60 days by purchasing extended update service. Instructions for using and updating Norton Internet Security software and for purchasing extended update service are provided within the application. To view and access Norton Internet Security, select **Start > All Programs**.

For more information about computer viruses, type `viruses` in the Search field in Help and Support.

4 Using firewall software

When you use the computer for e-mail, network, or Internet access, unauthorized persons may be able to gain access to information about you, the computer, and your data. Use the firewall software preinstalled on the computer to protect your privacy.

Firewall features include logging, reporting, and automatic alarms to monitor all incoming and outgoing traffic. Refer to the firewall user guide or contact your firewall manufacturer for more information.



NOTE Under some circumstances a firewall can block access to Internet games, interfere with printer or file sharing on a network, or block authorized e-mail attachments. To temporarily solve the problem, disable the firewall, perform the task that you want to perform, and then reenale the firewall. To permanently resolve the problem, reconfigure the firewall.

5 Installing critical security updates



CAUTION To reduce the risk of information damage or loss from security breaches and computer viruses, install all critical updates from Microsoft as soon as you receive an alert.

Additional updates to the operating system and other software may have become available after the computer was shipped. Download all available updates and install them on your computer:

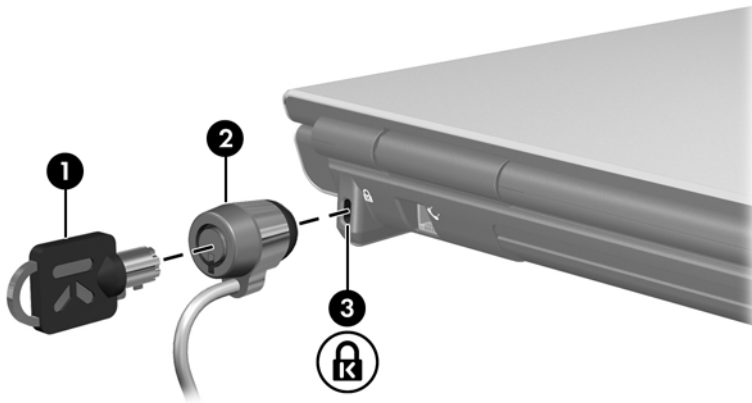
- Run Windows Update monthly to install the latest software from Microsoft.
- Use the update link at **Start > All Programs > Windows Update**. Updates to Windows and other Microsoft applications are released periodically. You can obtain updates, as they are released, from the Microsoft Web site and through the updates link in Help and Support.

6 Installing an optional security cable



NOTE A security cable is designed to act as a deterrent but may not prevent the computer from being mishandled or stolen.

1. Loop the security cable around a secured object.
2. Insert the key (1) into the cable lock (2).
3. Insert the cable lock into the security cable slot on the computer (3), and then lock the cable lock with the key.

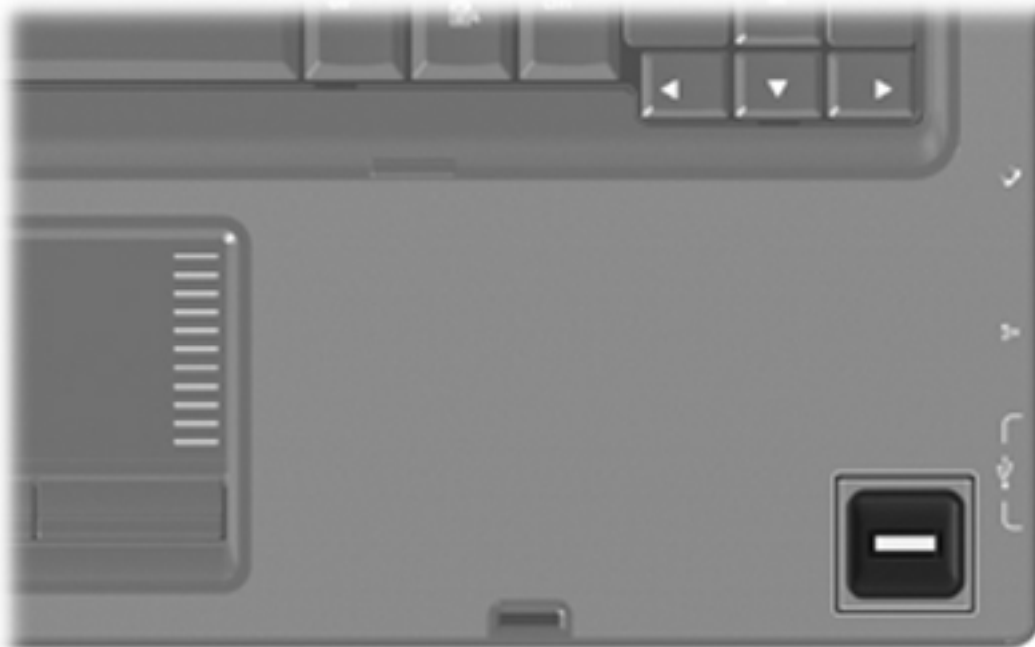


NOTE The location of the security cable slot varies by model.

7 Using the fingerprint reader (select models only)



NOTE The location of the fingerprint reader varies by model.



Locating the fingerprint reader

The fingerprint reader is a small metallic sensor that is located in one of the following areas of your computer:

- Near the bottom of the TouchPad
- On the right side of the keyboard
- On the upper-right side of the display

Depending on your computer model, the fingerprint reader may be oriented horizontally or vertically. Both orientations require that you swipe your finger perpendicular to the metallic sensor.



Registering fingerprints

A fingerprint reader allows you to log on to Windows using a fingerprint registered in VeriSoft Access Manager, instead of using a Windows password.

Whether you are using an HP computer with an integrated fingerprint reader or an optional fingerprint reader, two steps are required for fingerprint logon to Windows:

1. Set up the fingerprint reader.
2. Use your registered fingerprint to log on to Windows.

Step 1: Set up the fingerprint reader



NOTE If you are using an optional fingerprint reader, connect the reader to the computer before performing the steps below.

To set up the fingerprint reader:

1. In Windows, double-click the **VeriSoft Access Manager** icon in the notification area of the taskbar.
2. On the “My Identity” page, click **Log On**, located in the upper-left corner of the page.

The VeriSoft Access Manager Logon Wizard opens.

3. On the “Introduce Yourself” page, enter the user's Windows password, if one has been established, and then click **Next**.
4. On the “Services and Applications” page, click **I want to**, and then click **Register Fingerprints**.



NOTE By default, VeriSoft Access Manager requires registration of at least 2 different fingers.

5. When the VeriSoft Access Manager Registration Wizard opens, click **Next**, and then slowly swipe your finger across the sensor.



NOTE The right index finger is the default finger for enrolling the first fingerprint. You can change the default by clicking the finger you want to register first, on either the left hand or the right hand. When you click a finger, it will be outlined to show it has been selected.

6. Continue swiping the same finger over the fingerprint sensor until the finger on the screen turns green.



NOTE The progress indicator advances after each finger swipe. Multiple swipes are necessary to register a fingerprint.

NOTE If you need to start over during the fingerprint registration process, right-click the highlighted finger on the screen and then click **Start Over**.

7. Click a different finger on the screen to register, and then repeat steps 5 and 6.



NOTE If you click **Finish** before registering at least 2 fingers, an error message is displayed. Click **OK** to continue.

8. After you have registered at least 2 fingers, click **Finish**.
9. To set up the fingerprint reader for a different Windows user, log on to Windows as that user and then repeat steps 1 through 8.

Step 2: Use your registered fingerprint to log on to Windows

To log on to Windows using your fingerprint:

1. Immediately after you have registered your fingerprints, restart Windows.
2. Swipe any of your registered fingers to log on to Windows.

Index

A

- administrator password
 - entering 4
 - managing 4
- antivirus software 6

C

- cable, security 9
- critical updates, software 8

E

- entering a power-on password 5
- entering an administrator password 4

F

- fingerprint reader 10
- fingerprint reader location 11
- firewall software 7

M

- managing a power-on password 5
- managing an administrator password 4

P

- passwords
 - administrator 3
 - power-on 4
 - set in Setup Utility 3
 - set in Windows 3
- power-on password
 - entering 5
 - managing 5

Q

- QuickLock 3

R

- registering fingerprints 11

S

- security
 - features 1
 - passwords 2
- security cable 9
- Setup Utility
 - passwords set in 3
- software
 - antivirus 6
 - critical updates 8
 - firewall 7

W

- Windows, passwords set in 3

