

HP LaserJet P2010 Series

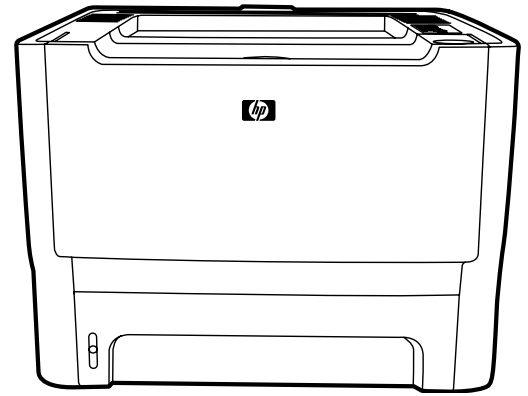


EN Getting Started Guide

DA Sådan kommer du i gang

CA Guia d'introducció

מדריך לתחילת העבודה HE



© 2007 Hewlett-Packard Development Company, L.P.

www.hp.com



CB450-90944

Copyright and License

© 2007 Copyright Hewlett-Packard Development Company, L.P.

Reproduction, adaptation or translation without prior written permission is prohibited, except as allowed under the copyright laws.

The information contained herein is subject to change without notice.

The only warranties for HP products and services are set forth in the express warranty statements accompanying such products and services. Nothing herein should be construed as constituting an additional warranty. HP shall not be liable for technical or editorial errors or omissions contained herein.

Part number: CB450-90944

Edition 1, 3/2007

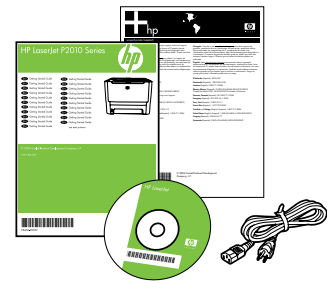
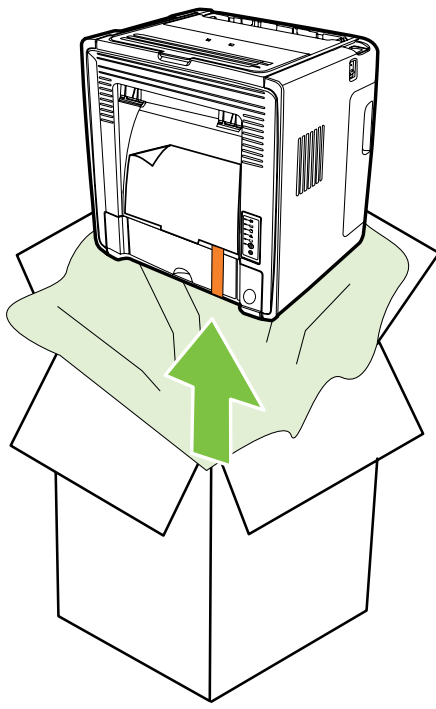
FCC Regulations

This equipment has been tested and found to comply with the limits for a Class B digital device, pursuant to Part 15 of the FCC rules. These limits are designed to provide reasonable protection against harmful interference in a residential installation. This equipment generates, uses, and can radiate radio-frequency energy. If this equipment is not installed and used in accordance with the instructions, it may cause harmful interference to radio communications. However, there is no guarantee that interference will not occur in a particular installation. If this equipment does cause harmful interference to radio or television reception, which can be determined by turning the equipment off and on, correct the interference by one or more of the following measures:

- Reorient or relocate the receiving antenna.
- Increase separation between equipment and receiver.
- Connect equipment to an outlet on a circuit different from that to which the receiver is located.
- Consult your dealer or an experienced radio/TV technician.

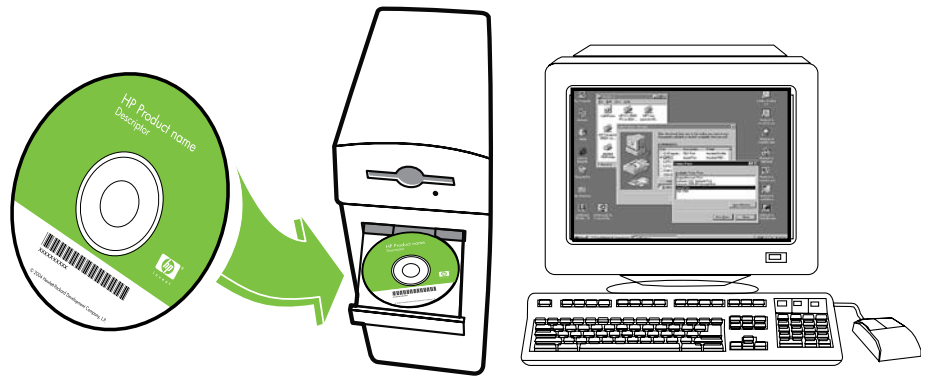
Any changes or modifications to the printer that are not expressly approved by HP could void the user's authority to operate this equipment. Use of a shielded interface cable is required to comply with the Class B limits of Part 15 of FCC rules. For more regulatory information, see the HP LaserJet P2010 Series printer electronic user guide. Hewlett-Packard shall not be liable for any direct, indirect, incidental, consequential, or other damage alleged in connection with the furnishing or use of this information.

1



10.7 kg
23.6 lbs

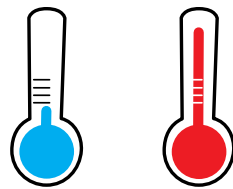
2



3

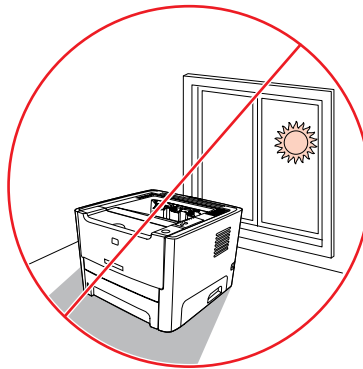
- EN** • Select a sturdy, well-ventilated, dust-free area to position the device.
- DA** • Vælg et fast, godt ventileret og støvfrit underlag at placere enheden på.
- CA** • Trieu una superfície sòlida, ben ventilada i sense pols per colocar el dispositiu.

HE • בחר אזור יציב, מאוורר היטב ונקי מאבק שבו תמקם את ההתקן.



10° – 32.5°C
(50° – 91°F)

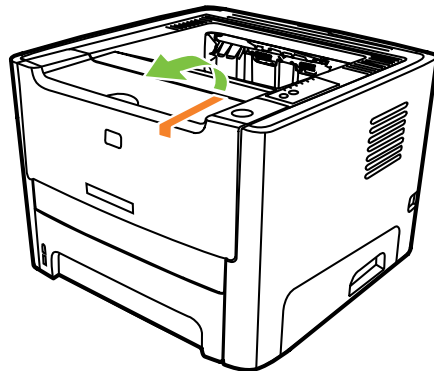
10% – 80%



4

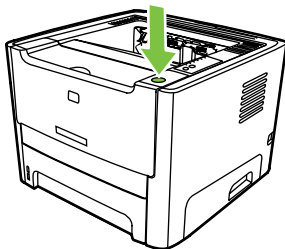
- EN • Remove all orange shipping materials.
- DA • Fjern al orange forsendelsesmateriale.
- CA • Traieu tots els materials d'embalatge de color taronja.

HE • הסר את כל חומרי האריזה הכתומים.

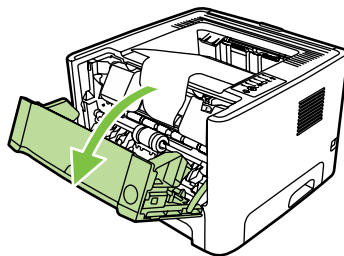


5

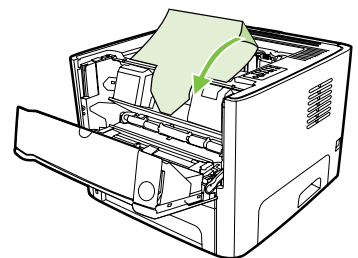
A



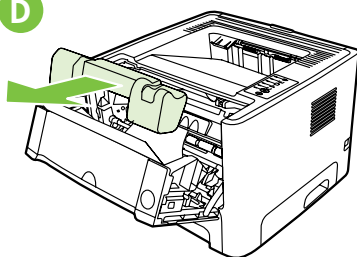
B



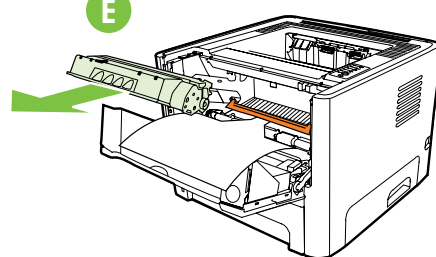
C

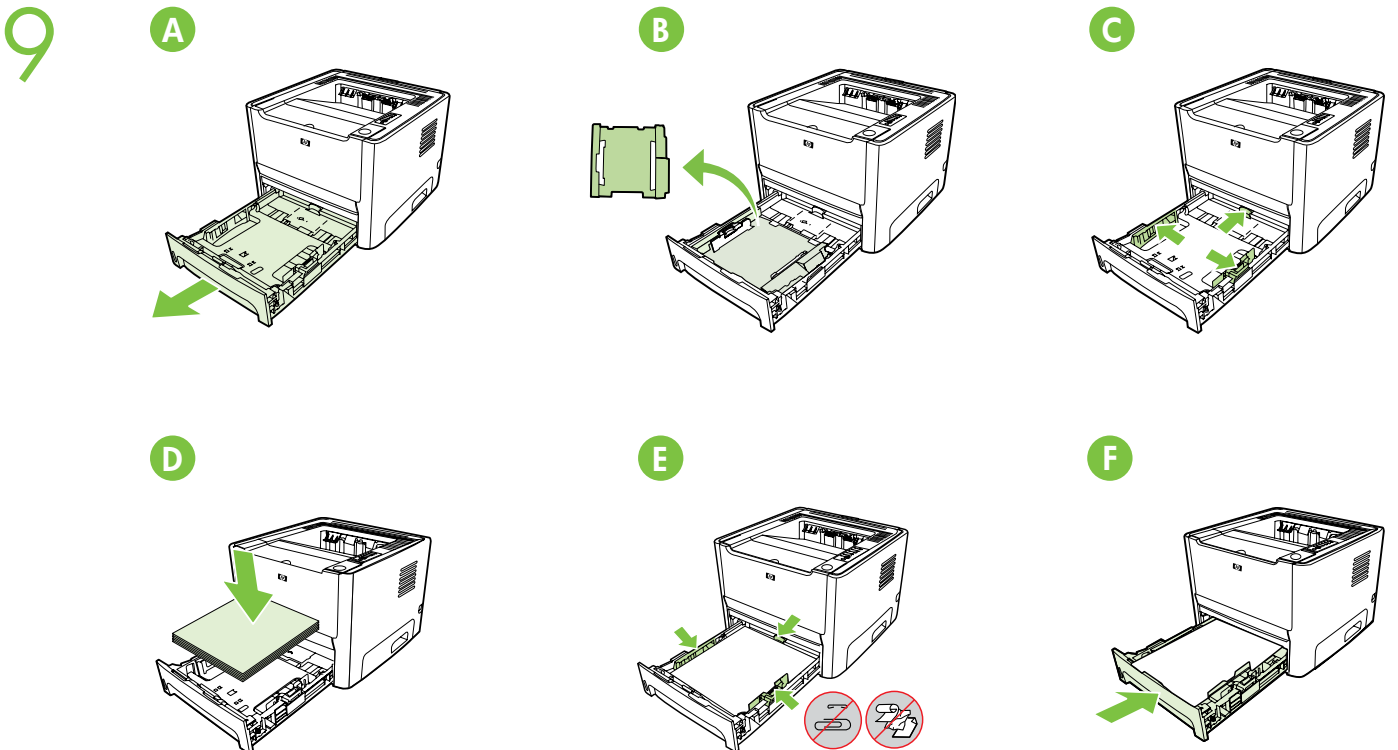
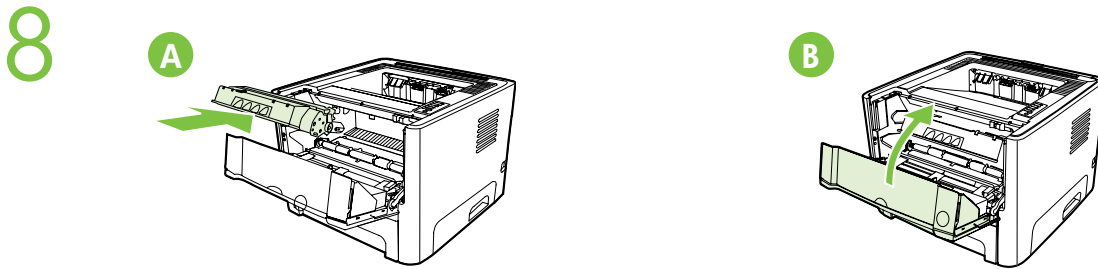
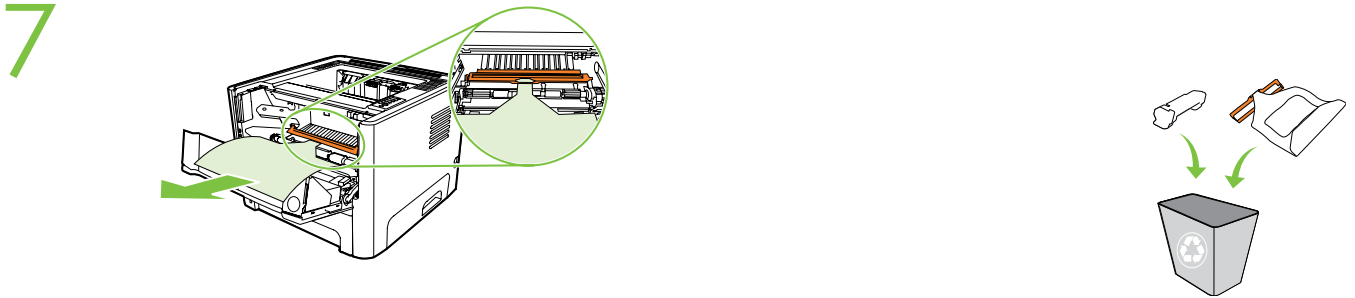
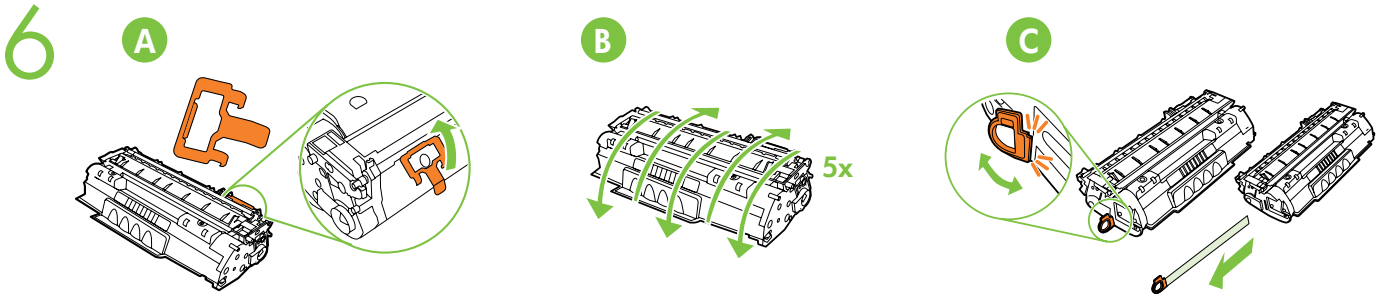


D



E





EN Note: For non-network (n) models, go to step 11.

DA Bemærk! For modeller uden netværkskort (n) kan du gå videre til trin 11.

CA Nota: Per als models que no són de xarxa (n), aneu al pas 11.

הערה: עבור דגמים שאינם מיועדים לרשת (n), עבור לשלב 11. **HE**

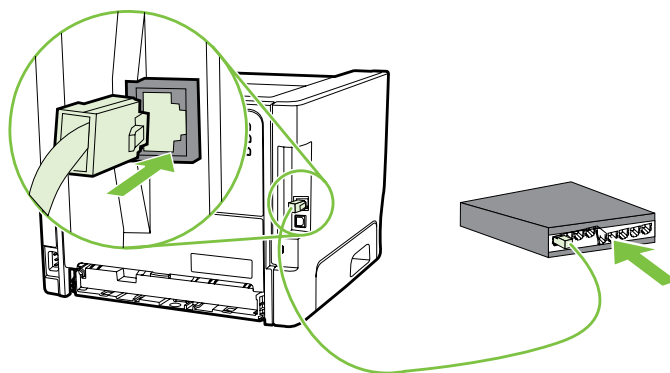
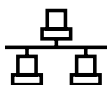
10

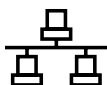
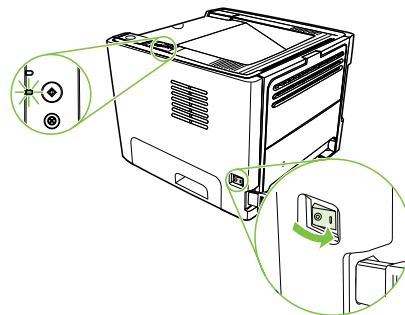
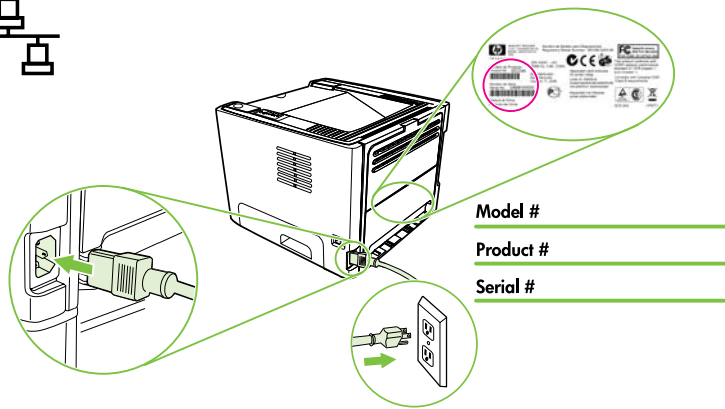
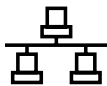
EN • Connect a Network (N model only) cable.

DA • Tilslut et Netværkskabel (kun N-model).

CA • Connecteu un cable de xarxa (només models N)

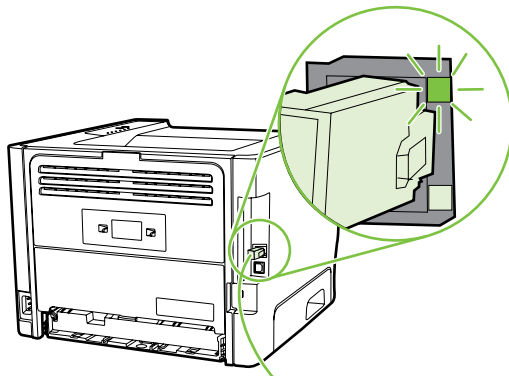
• חבר כבל רשת (בדגם N בלבד). **HE**

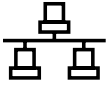




- EN** • Verify that one of the network lights (10 or 100) is illuminated on network port.
- DA** • Konstater, at der er lys i en af netværkslamperne (10 eller 100) på netværksporten.
- CA** • Comproveu que un dels indicadors lluminosos de xarxa (10 o 100) estigui il·luminat al port de xarxa.

HE • ודא כי אחת מנוריות הרשת (10 או 100) דולקת ביציאת רשת.





EN **Note:** If IP address is needed during software installation, press and hold the green GO button for 5 seconds to print Configuration page.

DA **Bemærk!** Hvis der er brug for IP-adressen under softwareinstallationen, tryk på den grønne GO-knap og hold den inde i fem sekunder for at udskrive Konfigurationssiden.

CA **Nota:** Si necessiteu una adreça IP durant la instal·lació del programari, mantingueu premut el botó GO (Vés) durant cinc segons per imprimir una pàgina de configuració.

HE **הערה:** אם דרושה כתובת IP במהלך התקנת התוכנה, לחץ לחיצה ממושכת על לחצן GO הירוק למשך 5 שניות כדי להדפיס דף תצורה.

11

EN Install software.

DA Installer software.

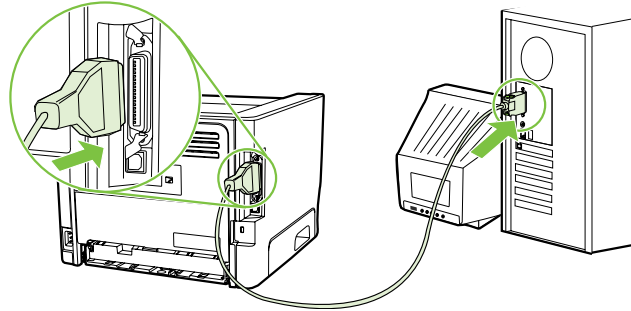
CA Instal·leu el programari.

HE התקן את התוכנה.

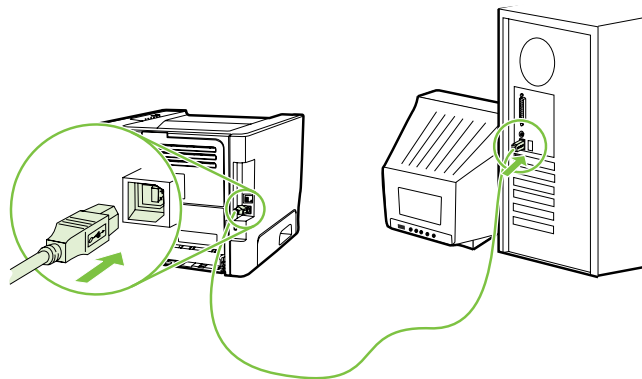
12

- EN** • Connect a Parallel or USB cable when prompted during the software installation.
- DA** • Forbind et Parallel- eller USB-kabel, når du bliver bedt om det under softwareinstallationen.
- CA** • Connecteu un cable en parallel o USB quan se us demani durant la instal·lació del programari.

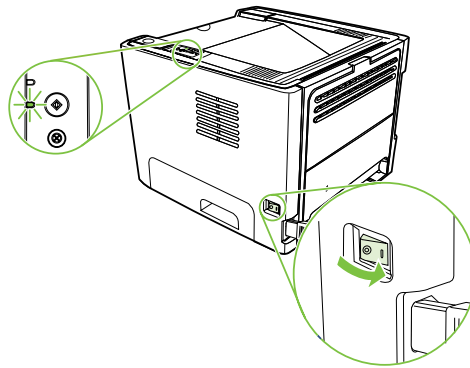
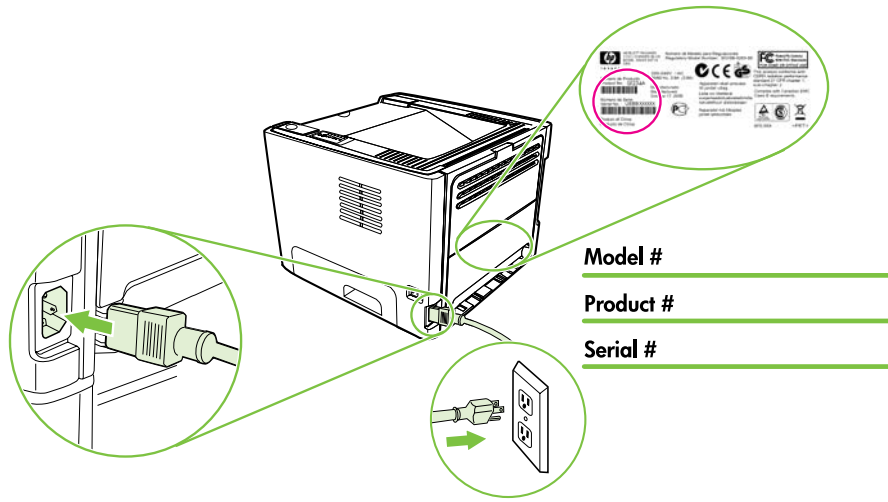
• חבר כבל מקבילי או כבל USB כאשר תוצג לך בקשה לכך במהלך התקנת התוכנה. **HE**



(3m/10')



13



14

- EN** A "Test Page" will print after software has been installed.
- DA** En "Testside" vil blive udskrevet, efter softwaren er blevet installeret.
- CA** S'imprimirà una pàgina de prova després que s'hagi instal·lat el programari.

HE "דף ניסיון" יודפס לאחר התקנת התוכנה.

Additional Information

See the electronic User Guide on the CD-ROM that came with the printer for more information on the following topics:

- Troubleshooting
- Important safety notices and regulatory information
- Detailed user instructions

This information is also available at <http://www.hp.com/support/ljp2010series>

Yderligere oplysninger

Se den elektroniske Brugervejledning på den cd-rom, som fulgte med printeren, for yderligere oplysninger om følgende emner:

- Fejlfinding
- Vigtige sikkerhedsmeddelelser og regulativ information
- Detaljerede brugerinstruktioner

Disse informationer kan du også finde på <http://www.hp.com/support/ljp2010series>.

Informació addicional

Consulteu la Guia de l'usuari electrònica al CD-ROM subministrat amb la impressora per obtenir més informació sobre els temes següents:

- Solució de problemes
- Avisos importants sobre seguretat i informació sobre normatives
- Instruccions detallades per a l'usuari

Aquesta informació també està disponible a <http://www.hp.com/support/ljp2010series>.

מידע נוסף

לקבלת מידע נוסף אודות הנושאים הבאים, עיין במדריך למשתמש האלקטרוני בתקליטור המצורף למדפסת:
 • פתרון בעיות

- הוראות בטיחות חשובות ומידע תקינה
- הוראות מפורטות למשתמש

מידע זה זמין גם בכתובת <http://www.hp.com/support/ljp2010series>

