

Multimedia

User Guide

© Copyright 2007 Hewlett-Packard
Development Company, L.P.

Windows is a U.S. registered trademark of
Microsoft Corporation.

The information contained herein is subject
to change without notice. The only
warranties for HP products and services are
set forth in the express warranty statements
accompanying such products and services.
Nothing herein should be construed as
constituting an additional warranty. HP shall
not be liable for technical or editorial errors
or omissions contained herein.

First Edition: January 2007

Document Part Number: 430298-001

Table of contents

1 Multimedia hardware

Using the optical drive	1
Identifying the installed optical drive	1
Inserting an optical disc	2
Removing an optical disc (with power)	3
Removing an optical disc (without power)	4
Using the media activity functions	5
Using the media activity hotkeys	5
Using the media activity buttons (select models only)	6
Using the Quick Launch buttons	7
Using the audio features	8
Using the audio-in (microphone) jack	10
Using the audio-out (headphone) jack	10
Using S/PDIF digital audio (select models only)	10
Adjusting the volume	11
Using the video features	12
Using the external monitor port	12
Using the S-Video-out jack	13
Using the camera (select models only)	14
Adjusting camera properties	15

2 Multimedia software

Identifying preinstalled multimedia software	17
Installing multimedia software from a CD (select models only)	17
Using multimedia software	17
Preventing playback disruptions	18
Protecting the CD or DVD write process	18
Changing DVD region settings	19
Observing the copyright warning	19

Index	20
--------------------	-----------

1 Multimedia hardware

Using the optical drive

The optical drive allows you to play, copy, and create CDs or DVDs, depending on the type of installed drive and installed software.

Identifying the installed optical drive

- ▲ Select **Start > Computer**.

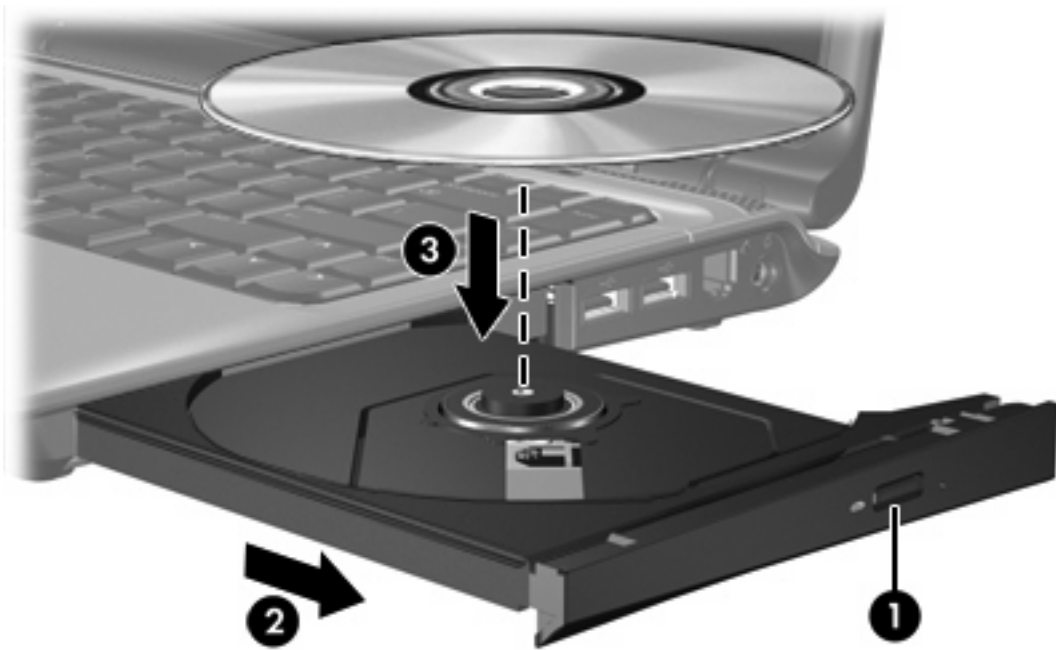
Inserting an optical disc

1. Turn on the computer.
2. Press the release button (1) on the drive bezel to release the media tray.
3. Pull out the tray (2).
4. Hold the disc by the edges to avoid touching the flat surfaces and position the disc label-side up over the tray spindle.



NOTE If the tray is not fully accessible, tilt the disc carefully to position it over the spindle.

5. Gently press the disc (3) down onto the tray spindle until the disc snaps into place.



6. Close the media tray.



NOTE After you insert a disc, a short pause is normal. If you have not selected a media player, an AutoPlay dialog box opens. It prompts you to select how you want to use the media content.

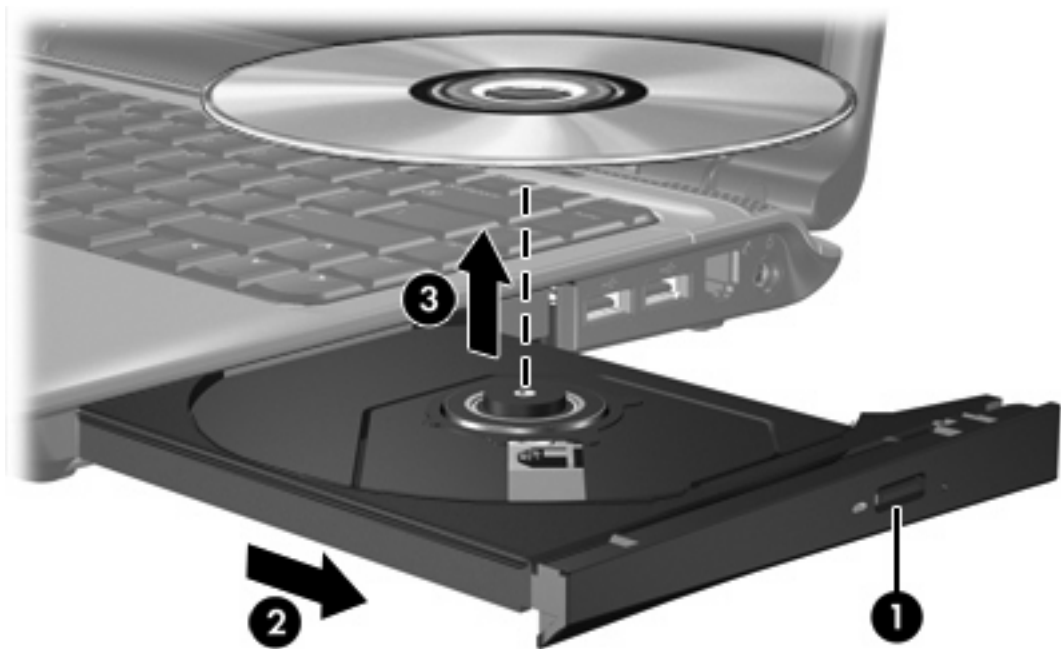
Removing an optical disc (with power)

If the computer is running on external or battery power:

1. Turn on the computer.
2. Press the release button (1) on the drive bezel to release the media tray, and then pull out the tray (2).
3. Remove the disc (3) from the tray by gently pressing down on the spindle while lifting the outer edges of the disc. Hold the disc by the edges and avoid touching the flat surfaces.



NOTE If the tray is not fully accessible, tilt the disc carefully as you remove it.



4. Close the media tray and place the disc in a protective case.

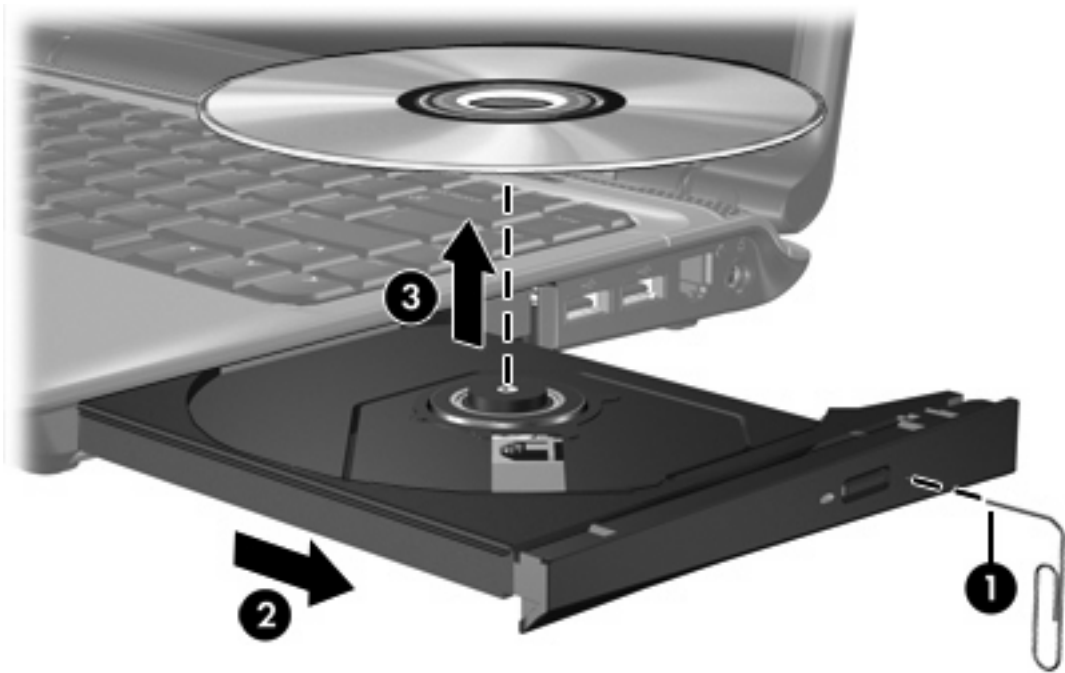
Removing an optical disc (without power)

If external or battery power is unavailable:

1. Insert the end of a paper clip (1) into the release access in the front bezel of the drive.
2. Press in gently until the tray is released, and then pull out the tray (2).
3. Remove the disc (3) from the tray by gently pressing down on the spindle while lifting the outer edges of the disc. Hold the disc by the edges and avoid touching the flat surfaces.



NOTE If the tray is not fully accessible, tilt the disc carefully as you remove it.



4. Close the media tray and place the disc in a protective case.

Using the media activity functions

The media activity hotkeys and the media activity buttons (select models only) control the play of an audio CD or a DVD that is inserted into the optical drive.

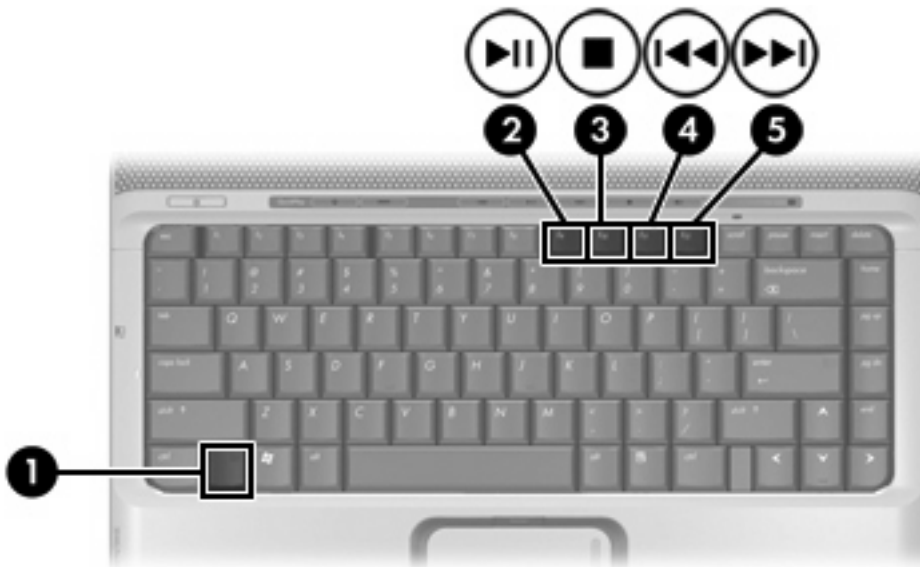
Using the media activity hotkeys

Media activity hotkeys are combinations of the **fn** key (1) and any of the 4 function keys.



NOTE To control the play of an inserted video CD, use the media activity controls in your video CD player program.

- To play, pause, or resume an inserted audio CD or a DVD, press **fn+f9** (2).
- To stop an inserted audio CD or a DVD that is playing, press **fn+f10** (3).
- To play the previous track of an audio CD or the previous chapter of a DVD that is playing, press **fn+f11** (4).
- To play the next track of an audio CD or the next chapter of a DVD that is playing, press **fn+f12** (5).

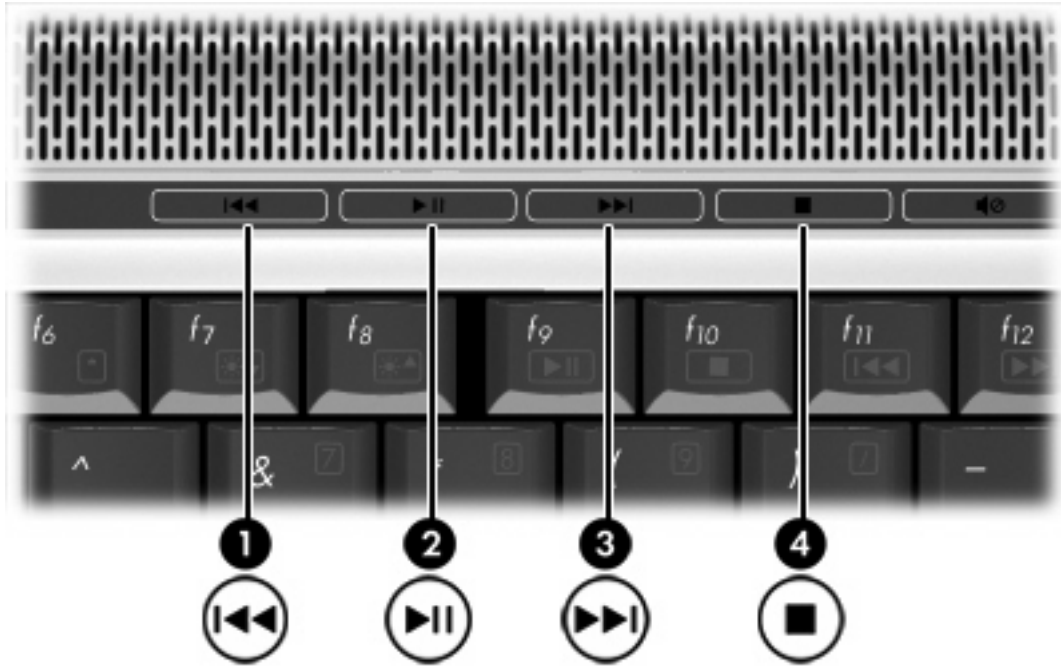


Using the media activity buttons (select models only)



NOTE The tapping sound made by the media activity buttons is enabled at the factory. You can disable the sound in the Setup Utility (f10).

The following illustration and table describe the media activity buttons.



Component	Description
(1) Previous/rewind button	When a disc is playing in the optical drive: <ul style="list-style-type: none">• Press to play the previous track or chapter.• Press fn+ this button to rewind.
(2) Play/pause button	When a disc is in the optical drive and is <ul style="list-style-type: none">• Not playing, press to play the disc.• Playing, press to pause the disc.
(3) Next/fast forward button	When a disc is playing in the optical drive: <ul style="list-style-type: none">• Press once to play the next track or chapter.• Press fn+ this button to fast forward.
(4) Stop button	When a disc is playing in the optical drive, press to stop the current disc activity.

Using the Quick Launch buttons



NOTE The tapping sound made by the Quick Launch buttons is enabled at the factory. You can disable the sound in the Setup Utility (f10).

The media button (1) and the DVD button (select models only) (2) functions vary by model and installed software. With these buttons, you can watch DVD movies, listen to music, and view pictures.



Pressing the media button launches the QuickPlay program.

Pressing the DVD button launches the DVD playback feature of the QuickPlay program.



NOTE If the computer has been set up to require a logon password, you may be asked to log on to Windows. QuickPlay launches automatically after you log on. Refer to the QuickPlay online Help for more information.

Using the audio features

The following illustration and table describe the audio features of the computer.



NOTE Your computer may look slightly different from the illustration in this section.



Component	Description
(1) Speakers (2)	Produce computer sound.
(2) Volume mute button	Mutes and restores computer sound.
(3) Volume scroll zone	Adjusts speaker volume. Slide your finger to the left to decrease volume and to the right to increase volume. Alternatively, you can tap the left half of the scroll zone to decrease volume, or you can tap the right half of the scroll zone to increase volume.

Component	Description
(4) Audio-out (headphone) jacks (2)	Connect optional powered stereo speakers, headphones, ear buds, a headset, or television audio.
	<div data-bbox="839 310 895 363"> </div> <p data-bbox="919 317 1465 367">NOTE Depending on your computer model, the computer may have 1 or 2 audio-out (headphone) jacks.</p> <p data-bbox="919 394 1465 499">NOTE On computer models with 2 audio-out (headphone) jacks, the jack on the right can also be used to transmit S/PDIF digital audio. A cable adapter is required.</p>
(5) Audio-in (microphone) jack	Connects an optional computer headset microphone, stereo array microphone, or monaural microphone.

Using the audio-in (microphone) jack

The computer is equipped with a stereo (dual-channel) microphone jack that supports a stereo array and monaural microphone. Using sound recording software with external microphones allows for stereo recording and stereo playbacks.

When connecting a microphone to the microphone jack, use a microphone with a 3.5-mm plug.

Using the audio-out (headphone) jack



WARNING! To reduce the risk of personal injury, adjust the volume before putting on headphones, earbuds, or a headset.



CAUTION To prevent possible damage to an external device, do not plug a single sound channel (monaural) connector into the headphone jack.

In addition to connecting headphones, the headphone jack is used to connect the audio input function of an audio/video device such as a television or VCR. On select models, the computer can also transmit S/PDIF digital audio signals through the audio-out jack on the right.

When connecting a device to the headphone jack, use only a 3.5-mm stereo plug.



NOTE When a device is connected to the headphone jack, the internal speakers are disabled.

Using S/PDIF digital audio (select models only)

S/PDIF (Sony/Phillips Digital Interface) or digital audio provides enhanced audio performance, including surround sound and other high-end audio output.

For digital audio connections, connect the S/PDIF digital audio plug to the digital audio connector on your audio/video equipment.



NOTE In order to use S/PDIF with the headphone jack, you will need an optional mini TOS link cable and/or adapter.

Adjusting the volume

You can adjust the volume using the following controls:

- Computer volume buttons:
 - To mute or restore volume, press the volume mute button.
 - To decrease the volume, slide your finger across the volume scroll zone from right to left. Alternatively, you can tap the left half of the scroll zone to decrease the volume.
 - To increase the volume, slide your finger across the volume scroll zone from left to right. Alternatively, you can tap the right half of the scroll zone to increase volume.



NOTE The tapping sound made by the volume button is enabled at the factory. You can disable the sound in the Setup Utility (f10).

- Windows volume control:
 - a. Click the **Volume** icon in the notification area, at the far right of the taskbar.
 - b. Increase or decrease the volume by moving the **Volume** slider up or down. Click the **Mute** icon to mute the volume.

– or –

 - a. Right-click the **Volume** icon in the notification area, and then click **Open Volume Mixer**.
 - b. In the Device column, increase or decrease the volume by moving the slider up or down. You can also mute the volume by clicking the **Mute** icon.

If the Volume icon is not displayed in the notification area, follow the steps below to place it there:

- a. Right-click in the notification area, and then click **Properties**.
 - b. Click the **Notification Area** tab.
 - c. Under System icons, select the **Volume** check box.
 - d. Click **OK**.
- Program volume control:

Volume can also be adjusted within some programs.

Using the video features

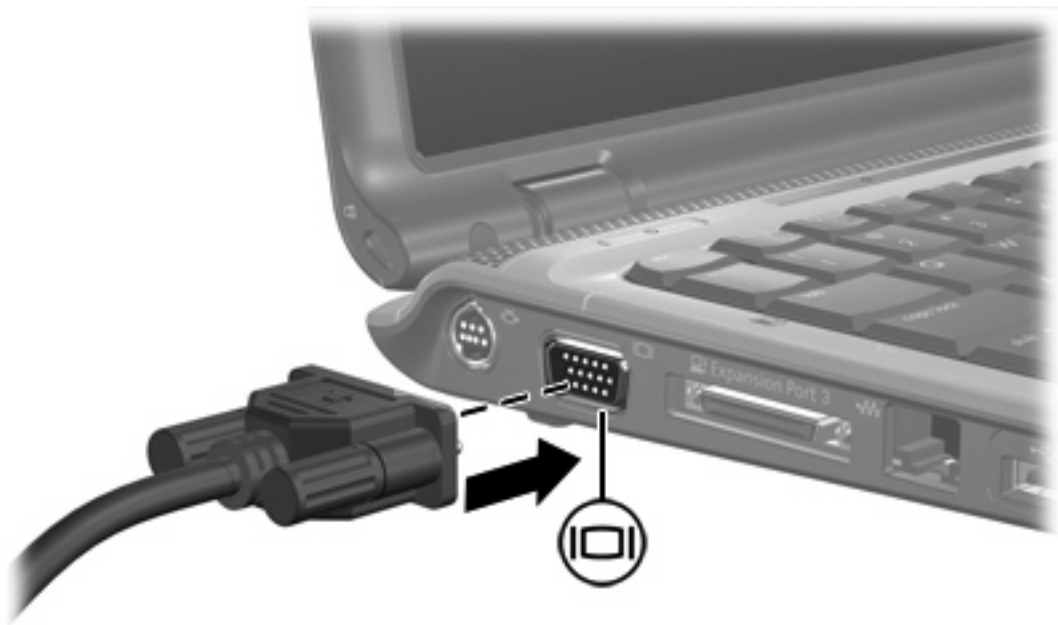
The computer includes the following video features:

- External monitor port that connects a television, monitor, or projector to the computer
- S-Video-out jack that connects a range of video components that allow you to maximize your multimedia features

Using the external monitor port

The external monitor port connects an external display device, such as an external monitor or projector, to the computer.

To connect a display device, connect the device cable to the external monitor port.



NOTE If a properly connected external display device does not display an image, press **fn+f4** to transfer the image to the device.

Using the S-Video-out jack

The 7-pin S-Video-out jack connects the computer to an optional S-Video device such as a television, VCR, camcorder, overhead projector, or video capture card.

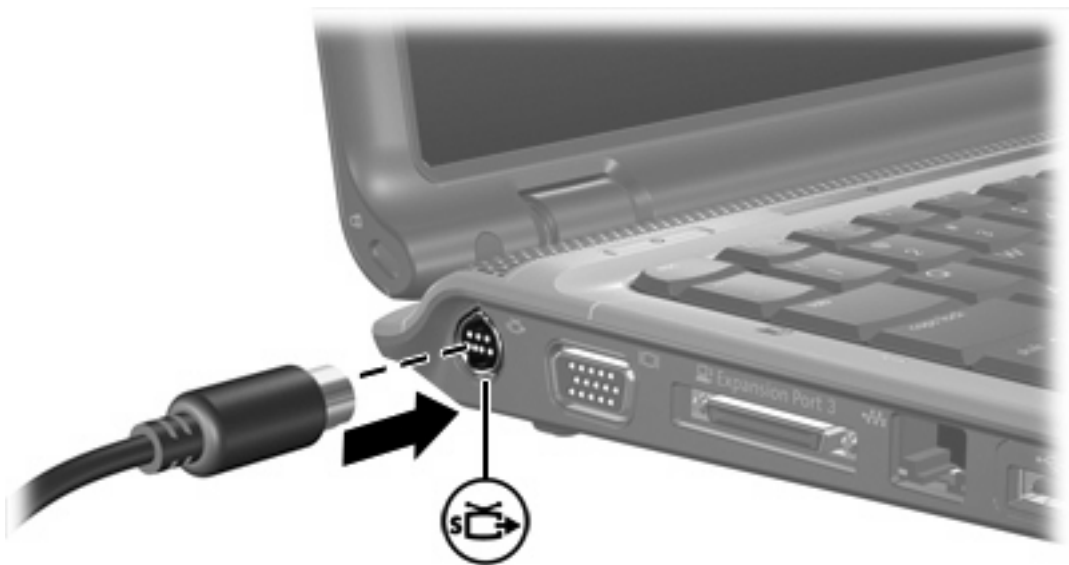
The computer can support one S-Video device connected to the S-Video-out jack, while simultaneously supporting an image on the computer display or any other supported external display.



NOTE To transmit video signals through the S-Video-out jack, you need an S-Video cable, available from most electronics retailers. If you are combining audio and video functions, such as playing a DVD movie on your computer and displaying it on your television, you also need a standard audio cable, available from most electronic retailers, to connect to the headphone jack.

To connect a video device to the S-Video-out jack:

1. Plug one end of the S-Video cable into the S-Video-out jack on the computer.



2. Connect the other end of the cable to the video device, according to the manufacturer's instructions included with the device.
3. Press the **fn+f4** keys to switch the image between display devices connected to the computer.



NOTE If the S-Video-out jack on the computer is not accessible because the computer is connected to an optional expansion product, connect the S-Video cable to the S-Video-out jack on the expansion product.

Using the camera (select models only)

Select computer models include an integrated camera, located on the top of the display. The camera can be used with a variety of software for the following functions:

- Capturing video
- Streaming video with instant message software
- Taking still photos



NOTE For information about using software designed for use with the integrated camera, refer to the online Help for that software.

The camera light (1) turns on when video software accesses the camera (2).



For optimum performance, observe the following guidelines while using the integrated camera:

- Be sure that you have the latest version of an instant message program before attempting a video conversation.
- Your integrated camera may not work properly across some network firewalls. If you are having trouble viewing or sending video to someone on another LAN or outside your network firewall, contact your Internet service provider for assistance.
- Whenever possible, place bright light sources behind the camera and out of the picture area.

Adjusting camera properties

You can adjust the following camera properties:

- **Brightness**—Controls the amount of light that is incorporated into the image. A higher brightness setting creates a brighter image; a lower brightness setting creates a darker image.
- **Contrast**—Controls the difference between lighter and darker areas on the image. A higher contrast setting intensifies the image; a lower contrast setting maintains more of the original information's dynamic range but leads to a flatter image.
- **Hue**—Controls the aspect of color that distinguishes it from another color (what makes a color red, green, or blue). Hue is distinct from saturation, which measures the intensity of the hue.
- **Saturation**—Controls the strength of color in the final image. A higher saturation setting creates a bolder image; a lower saturation setting creates a more subtle image.
- **Sharpness**—Controls the definition of edges in an image. A higher sharpness setting creates a more defined image; a lower sharpness setting creates a softer image.
- **Gamma**—Controls the contrast affecting the mid-level grays or midtones of an image. Adjusting the gamma of an image allows you to change the brightness values of the middle range of gray tones without dramatically altering the shadows and highlights. A lower gamma setting makes grays look black, and makes dark colors even darker.

The Properties dialog box is accessible from various programs that use the integrated camera, usually from a configuration, settings, or properties menu.

2 Multimedia software

The computer includes preinstalled multimedia software. Some models may be shipped with additional multimedia software on an optical disc.

Depending on the hardware and software included with the computer, the following multimedia tasks may be supported:

- Playing digital media, including audio and video CDs, audio and video DVDs, and Internet radio
- Creating or copying data CDs
- Creating, editing, and burning audio CDs
- Creating, editing, and burning a video or movie to a DVD or video CD



NOTE For details about using software included with the computer, refer to the software user guides. These guides may be provided on CD or as online Help files within the specific program. User guides may also be found on the software manufacturer's Web site.

Identifying preinstalled multimedia software

To view and access the preinstalled multimedia software on the computer:

- ▲ Select **Start > All Programs**.



NOTE You can also reinstall multimedia software on the computer. Select **Start > All Programs > Software Setup**.

Installing multimedia software from a CD (select models only)

To install multimedia software from a CD included with the computer:

1. Insert the multimedia software CD into the optical drive.
2. When the installation wizard opens, follow the installation instructions on the screen.
3. Restart the computer if prompted.

Repeat the installation procedure for all multimedia software on CD that you want to install.

Using multimedia software

1. Select **Start > All Programs**, and then open the multimedia program you want to use. For example, if you want to use Windows Media Player to play an audio CD, click **Windows Media Player**.



NOTE Some programs may be located in subfolders.

2. Insert the media disc, such as an audio CD, into the optical drive.
3. Follow the instructions on the screen.

– or –

1. Insert the media disc, such as an audio CD, into the optical drive.
An AutoPlay dialog box opens.
2. Click a multimedia task from the list of tasks.

Preventing playback disruptions

To reduce the possibility of playback disruption:

- Save your work and close all open programs before playing a CD or a DVD.
- Do not connect or disconnect hardware while playing a disc.

Do not initiate Hibernation or Sleep while playing a disc. Otherwise, you may see a warning message asking if you want to continue. If this message is displayed, click **No**. After you click No:

- Playback may resume.
 - or –
- Playback may stop and the screen may clear. To return to playing the CD or DVD, press the power button and then restart the disc.

Protecting the CD or DVD write process



CAUTION To prevent loss of information or damage to a disc:

Before writing to a disc, connect the computer to a reliable external power source. Do not write to a disc while the computer is running on battery power.

Before writing to a disc, close all open programs except the disc software you are using.

Do not copy directly from a source disc to a destination disc or from a network drive to a destination disc. Instead, copy from a source disc or network drive to your hard drive, and then copy from your hard drive to the destination disc.

Do not use the computer keyboard or move the computer while the computer is writing to a disc. The write process is sensitive to vibration.

Changing DVD region settings

Most DVDs that contain copyrighted files also contain region codes. The region codes help protect copyrights internationally.

You can play a DVD containing a region code only if the region code on the DVD matches the region setting on your DVD drive.



CAUTION The region settings on your DVD drive can be changed only 5 times.

The region setting you select the fifth time becomes the permanent region setting on the DVD drive.

The number of allowable region changes remaining on the drive is displayed in the Changes remaining box on the DVD Region tab. The number in the field includes the fifth and permanent change.

To change settings through the operating system:

1. Select **Start > Computer > System properties**.
2. In the left pane, click **Device Manager**.



NOTE Windows includes the User Account Control feature to improve the security of your computer. You may be prompted for your permission or password for tasks such as installing applications, running utilities, or changing Windows settings. Refer to Windows online Help for more information.

3. Click the "+" sign next to **DVD/CD-ROM drives**.
4. Right-click the DVD drive for which you want to change region settings, and then click **Properties**.
5. Make the desired changes on the **DVD Region** tab.
6. Click **OK**.

Observing the copyright warning

It is a criminal offense, under applicable copyright laws, to make unauthorized copies of copyright-protected material, including computer programs, films, broadcasts, and sound recordings. Do not use this computer for such purposes.

Index

- A**
 - audio features 8
 - audio-in (microphone) jack 10
 - audio-in (microphone) jack, identifying 9
 - audio-out (headphone) jack 10
 - audio-out (headphone) jack, identifying 9
- B**
 - buttons
 - DVD 7
 - media 7
 - next/fast forward 6
 - play/pause 6
 - previous/rewind 6
 - Quick Launch 7
 - stop 6
 - volume mute 8, 11
- C**
 - camera
 - identifying 14
 - properties 15
 - CD
 - inserting 2
 - playing 18
 - protecting 18
 - removing, with power 3
 - removing, without power 4
 - writing to 18
 - copyright warning 19
- D**
 - DVD
 - changing region setting 19
 - inserting 2
 - playing 18
 - protecting 18
 - removing, with power 3
 - removing, without power 4
 - writing to 18
- E**
 - earbuds 9
 - external monitor port, identifying 12
- H**
 - headphones 9
- J**
 - jacks
 - audio-in (microphone) 9, 10
 - audio-out (headphone) 9, 10
 - S-Video-out 13
- M**
 - media activity buttons, identifying 6
 - media activity hotkeys, identifying 5
 - media button, identifying 7
 - microphones, supported 10
 - monitor, connecting 12
 - multimedia software
 - described 16
 - identifying 17
 - installing 17
 - using 17
 - mute button 8, 11
- O**
 - optical disc
 - inserting 2
 - removing, with power 3
 - removing, without power 4
 - writing to 18
- P**
 - optical drive
 - playing 18
 - protecting 18
 - ports, external monitor 12
 - programs
 - identifying 17
 - installing 17
 - multimedia 16
 - using 17
 - projector, connecting 12
 - protecting playback 18
- Q**
 - Quick Launch buttons, identifying 7
 - QuickPlay 7
- R**
 - region codes, DVD 19
- S**
 - S-Video-out jack
 - connecting 13
 - identifying 13
 - S/PDIF digital audio 10
 - software
 - identifying 17
 - installing 17
 - multimedia 16
 - using 17
 - speakers, identifying 8
- T**
 - TV 10
- V**
 - VCR 10
 - volume mute button 11

volume mute button, identifying 8
volume scroll zone 11
volume scroll zone, identifying 8
volume, adjustment 11

