

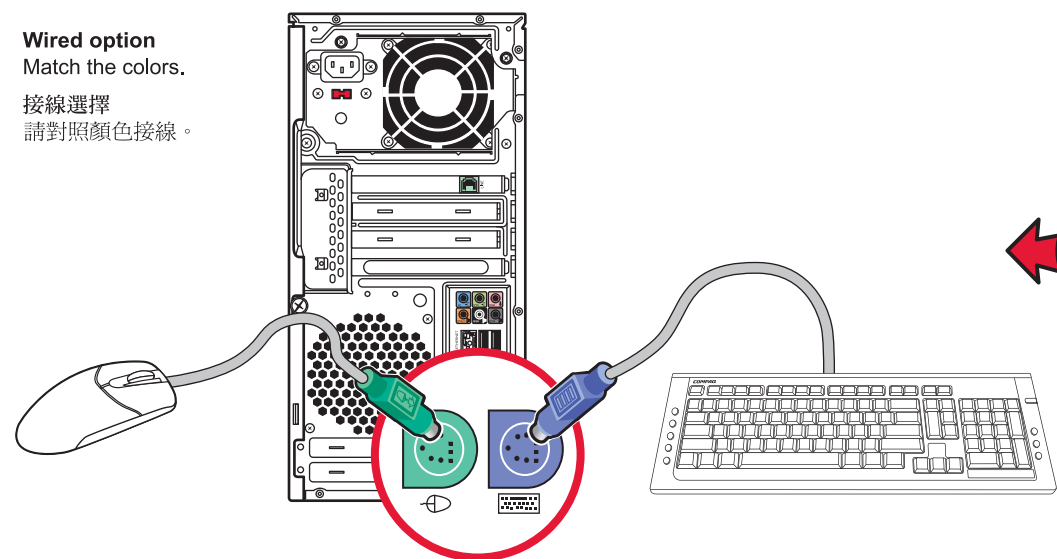
Location, availability, and number of connectors may vary.

接頭位置、可用性及數量可能會有不同。



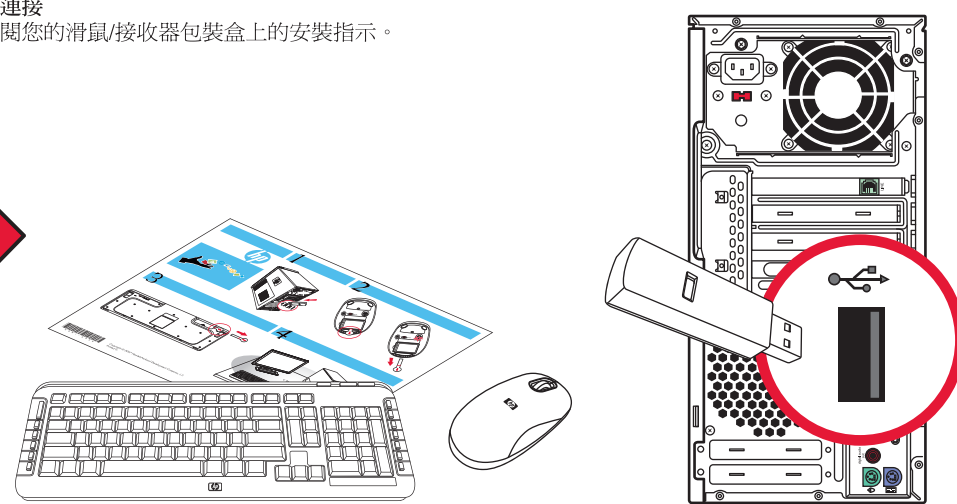
# 1 Keyboard and Mouse 鍵盤和滑鼠

**Wired option**  
Match the colors.  
接線選擇  
請對照顏色接線。



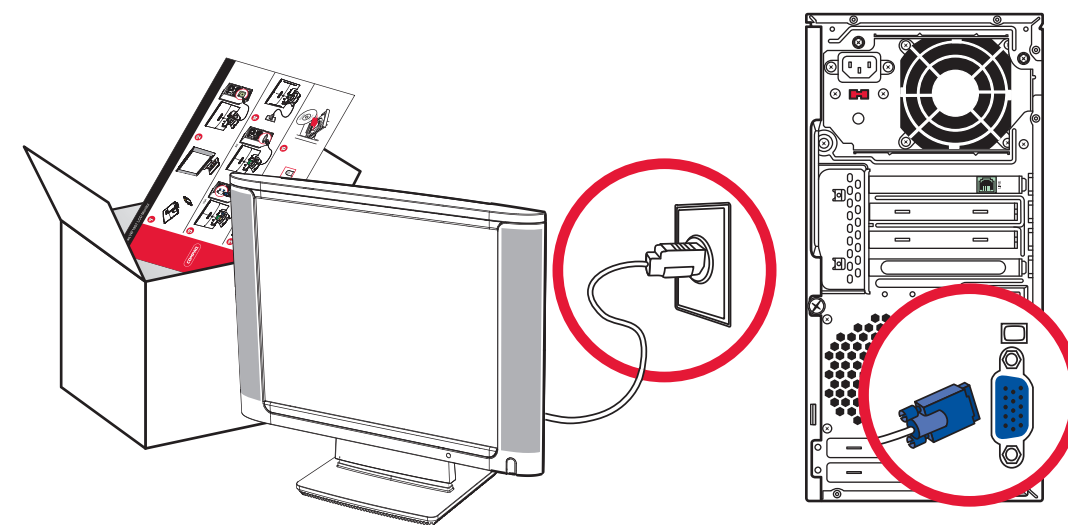
**Wireless option**  
Refer to the setup instructions located in your keyboard box.  
無線連接  
請參閱您的滑鼠/接收器包裝盒上的安裝指示。

or  
或



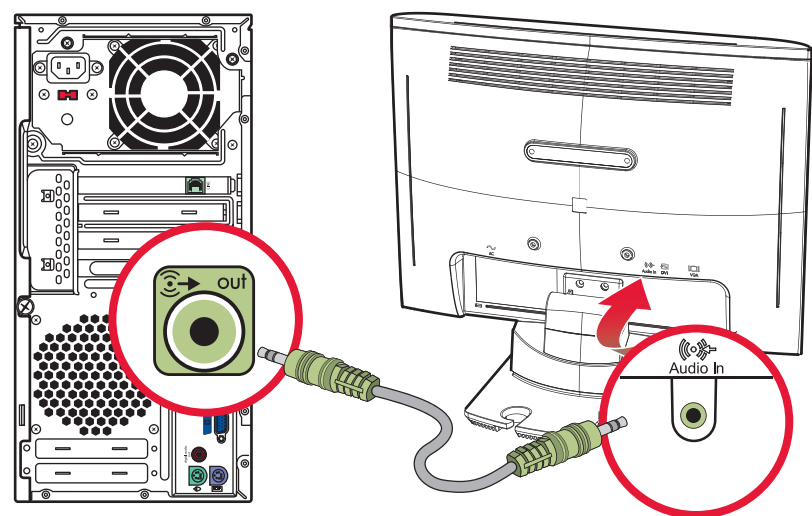
# 2 Monitor 顯示器

Refer to the setup instructions that came with your monitor. Monitors may be sold separately.  
請參閱您的顯示器隨附之安裝指示。顯示器可能為另行販售。



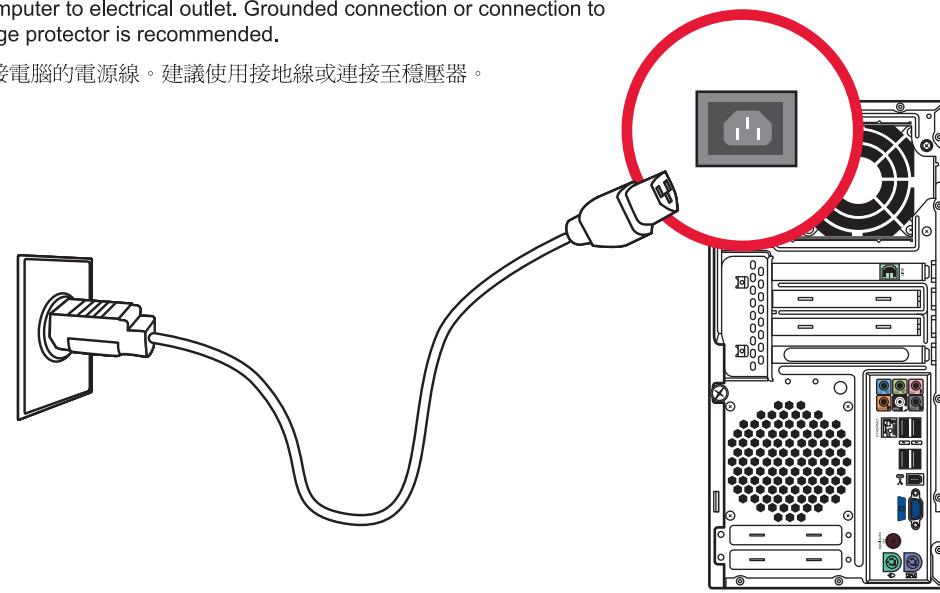
# 3 Speakers 喇叭

Refer to the setup instructions that came with your speakers. Speakers sold separately.  
請參閱您的喇叭隨附之安裝指示。喇叭可能為另行販售。



# 4 Connect power 連接電源

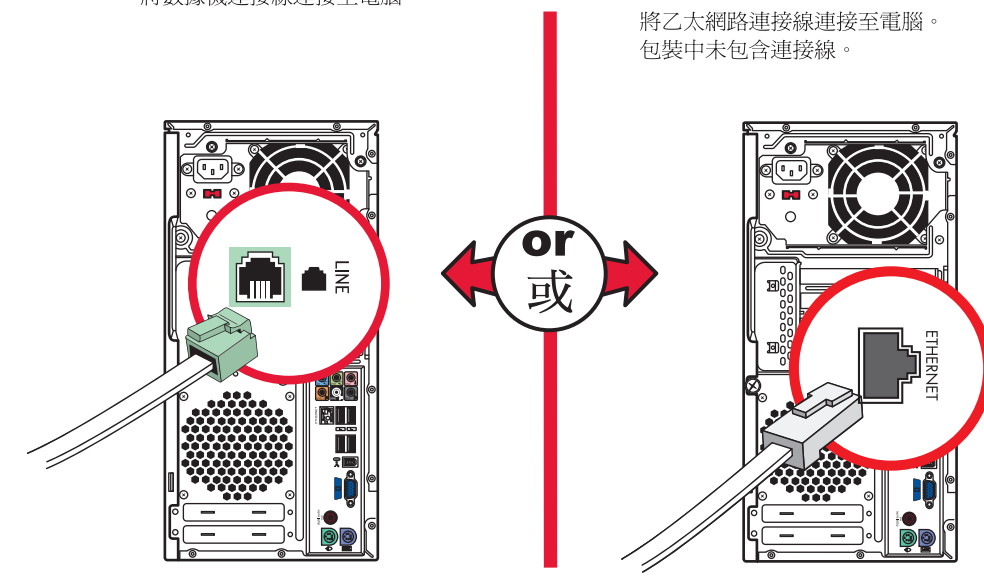
Computer to electrical outlet. Grounded connection or connection to surge protector is recommended.  
連接電腦的電源線。建議使用接地線或連接至穩壓器。



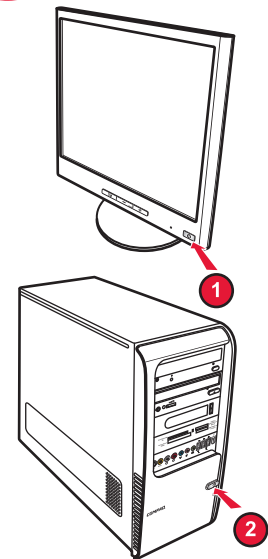
# 5 Modem / LAN 數據機/區域網路

Connect modem cable to computer.  
將數據機連接線連接至電腦。

Connect your Ethernet cable to computer.  
Cable not included.  
將乙太網路連接線連接至電腦。  
包裝中未包含連接線。



# 6 Power on 開啟電源



Please be patient while the computer starts for the first time. It may take up to 20 minutes, and you may see blank screens. **Do not turn off your computer during this process.**

第一次啟動電腦時要有耐心。啟動電腦可能需要 20 分鐘的時間，並且您可能會看到螢幕變黑。請勿在此程序執行期間關閉電腦。

## Locating Your User's Guides

Hewlett-Packard is committed to reducing the environmental impact of our products. As part of our continuing efforts, the following documents may be located on your hard disk drive for your reference:

- Getting Started guide
- PC Basics Guide
- Upgrading and Servicing Guide

To view the documents:

- 1 Click **Windows Start Button**®.
- 2 Select **All Programs**.
- 3 Select **User Guide**.

## 找到您的使用手冊

Hewlett-Packard 承諾要降低產品對環境造成的影響。在我們持續不斷的努力下，您可能在硬碟上找到下列文件以供參閱使用：

- 《開始使用手冊》
- 《PC 基本手冊》
- 《升級與維護手冊》

要查看文件：

- 1 按一下 **[Windows 開始按鈕]**®。
- 2 選取 **[所有程式]**。
- 3 選取 **[使用手冊]**。



Copyright © 2007 Hewlett-Packard Development Company, L.P.  
Printed in

www.hp.com