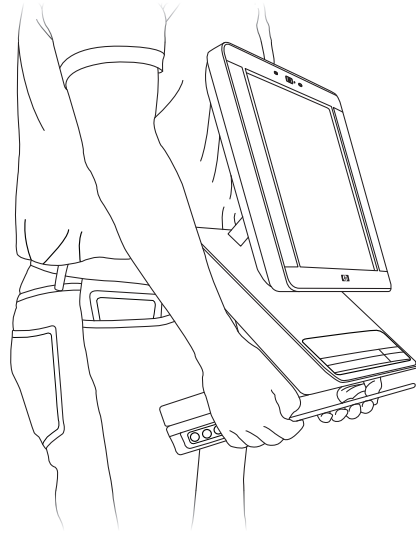


## 1 UNPACK CAREFULLY



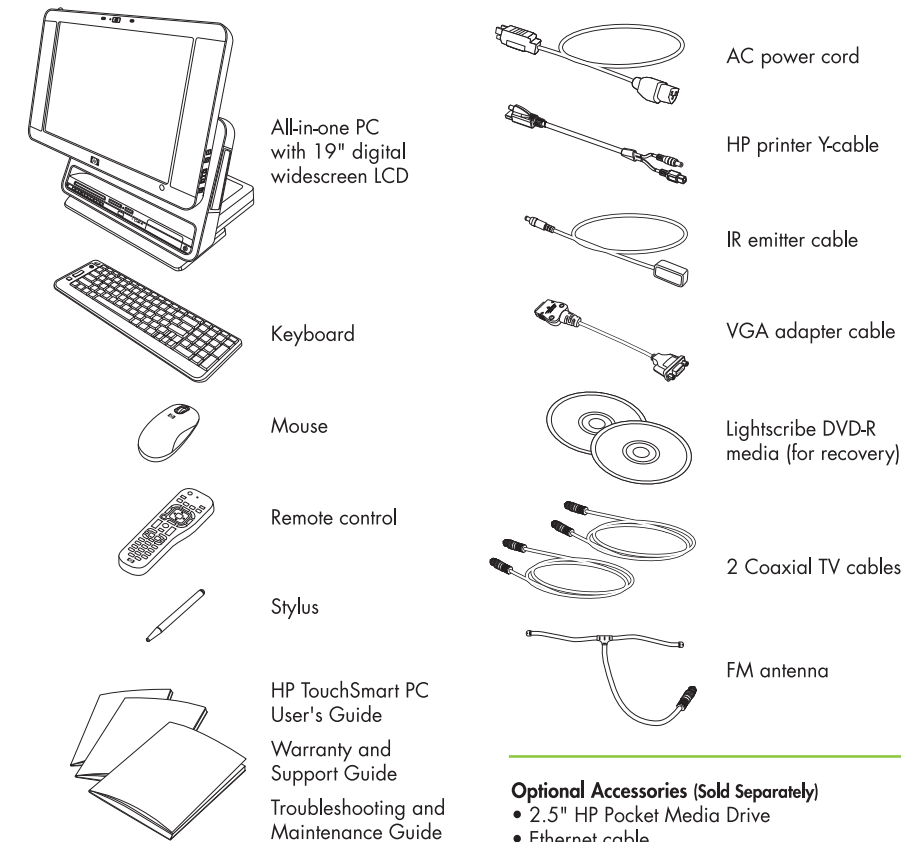
### Getting Started

- Choose best location and prepare the space.
- Carefully follow these instructions for quick setup. See the *HP TouchSmart PC User's Guide* for advanced instructions.

### Unpack PC

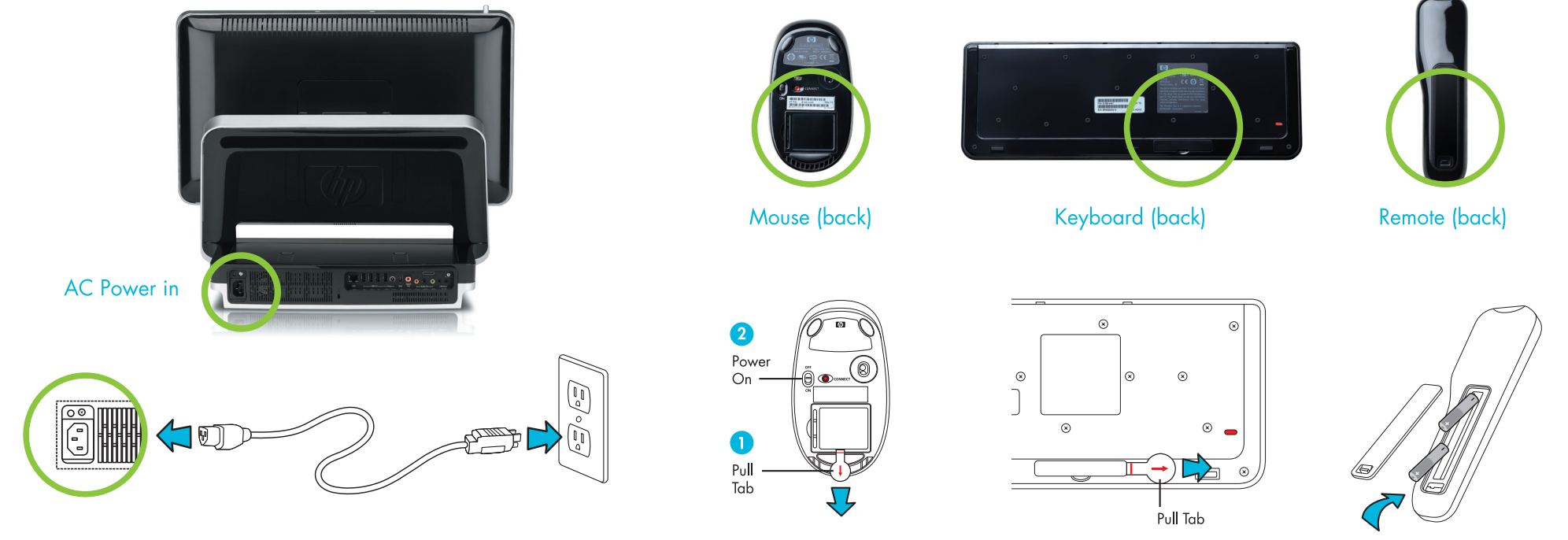
- Safely remove your new PC by lifting from the base - not the hinge or monitor.
- Remove protective covering from all parts.

## 2 REVIEW CONTENTS



- Optional Accessories (Sold Separately)**
- 2.5" HP Pocket Media Drive
  - Ethernet cable
  - HP Photosmart Printer

## 3 CONNECT POWER & ACTIVATE ACCESSORIES



### AC Power

Connect the AC power cord into the back of the PC as shown.

### Mouse

Pull tab on back to activate batteries. Turn power to "On".

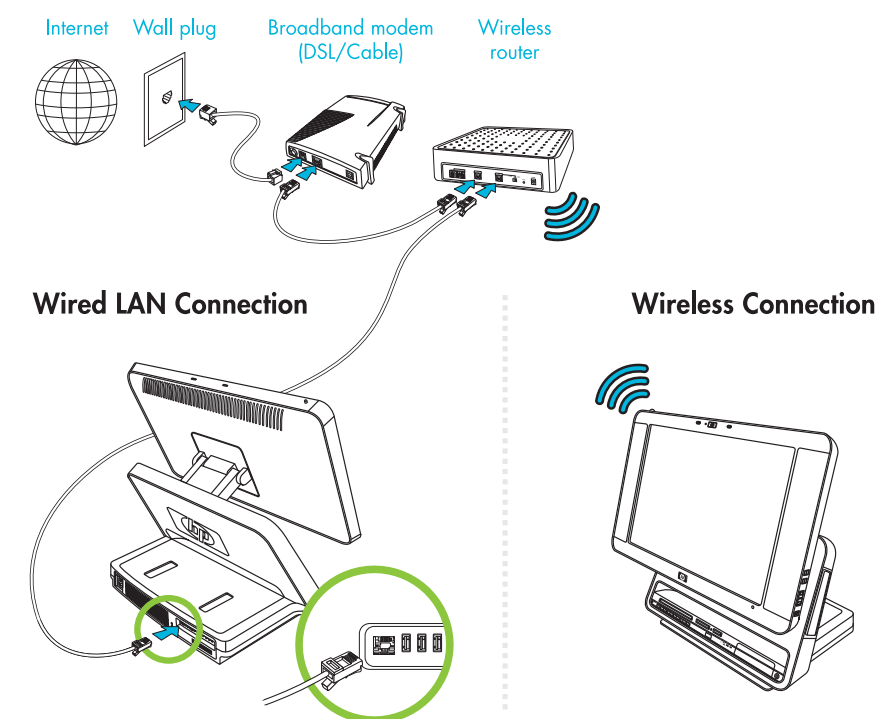
### Keyboard

Pull tab on back to activate batteries. **Do not push "On/Standby" button on front of keyboard until initial setup is complete or it will interrupt the setup procedure.**

### Remote

Remove battery cover, install 2 AA batteries.

## 4 CONNECT TO INTERNET



### Bluetooth

For specific information about setting up your PC with additional Bluetooth devices, see the *HP TouchSmart PC User's Guide*.

## 5 OPTIONAL SETUP



### FM Radio (optional)

For FM radio reception, connect the coaxial cable to the TV signal source and to the PC as shown.

### Television - cable/antenna (optional)

For standard TV reception, connect the coaxial cable to the TV signal source and to the PC as shown.

For information on connecting to set-top boxes or other advanced TV setup, see the *HP TouchSmart PC User's Guide*.

### Printer (optional)

**Recommended printer (HP Photosmart A510 or A610 series – sold separately)**  
Open printer output tray. Place printer on the back shelf to save desk space. Connect the Y-cable to printer and PC.

### Basic printer

Connect the power cord and USB cable to the printer. Plug the printer cord into a power source. Connect USB cable to back of computer and turn on printer.

## 6 POWER ON YOUR PC!



### Important

Do not press any "On/Standby" or "Power" buttons again until the set-up is complete.

### HP TouchSmart PC Initial Setup

Press the "On/Standby" button to start the initial (one-time) setup of the PC. This takes approximately 20 minutes. You can use this time to review additional setup instructions in the *HP TouchSmart PC User's Guide*, *Troubleshooting and Maintenance Guides*.

For additional detailed information after setup, you can go to the "Getting Started" guide located on your hard disk drive (click Start, then select Help & Support, then select "User's Guide").







# HP TouchSmart PC Quick Reference Guide



- A - Touch enabled 19" diagonal widescreen LCD
- B - High-performance built-in 2.0 speakers
- C - Stylus
- D - Built-in Webcam & microphone array
- E - HP Pocket Media Drive bay
- F - Channel, Volume, and Mute Controls
- G - HP SmartCenter Button
- H - On/Standby button
- I - Front Audio/Video inputs
- J - Activity indicator lights
- K - Remote Control IR sensor window
- L - Media card reader
- M - Media Control buttons
- N - Headphone Jack
- O - Slot-load SuperMulti DVD burner with LightScribe

