

Pointing Devices and Keyboard

User Guide

© Copyright 2007 Hewlett-Packard
Development Company, L.P.

Windows is a U.S. registered trademark of
Microsoft Corporation.

The information contained herein is subject
to change without notice. The only
warranties for HP products and services are
set forth in the express warranty statements
accompanying such products and services.
Nothing herein should be construed as
constituting an additional warranty. HP shall
not be liable for technical or editorial errors
or omissions contained herein.

First Edition: January 2007

Document Part Number: 430287-001

Table of contents

1 Pointing Devices

TouchPad	2
Using the TouchPad	2
Setting TouchPad preferences	2
Pointing stick	4
Using the pointing stick	4
Using an external mouse	4

2 Keyboard

Hotkeys	5
Hotkey quick reference	6
Hotkey procedures	6
Displaying system information (fn+esc)	6
Initiating Sleep (fn+f3)	6
Switch the screen image (fn+f4)	8
Viewing battery charge information (fn+f8)	8
Decreasing screen brightness (fn+f9)	8
Increasing screen brightness (fn+f10)	8
Activating the ambient light sensor (fn+f11)	8

3 HP Quick Launch buttons

Presentation button	11
Info Center button	12
HP Quick Launch Buttons control panel	13
Opening the Quick Launch Buttons control panel	13
Setting button preferences	13
Displaying the Q Menu	14
Setting Q Menu preferences	14
Removing a Q Menu item	14
Adding a listed item to the Q Menu	15
Adding a user-defined item to the Q Menu	15
Changing a user-defined item	15
Repositioning a Q Menu item	16
Removing an item from the Items to display on Q Menu list	16
Setting tiling preferences	16
Setting the ambient light sensor	16
Setting other preferences	16

4 Keypads

Using the embedded numeric keypad	19
Enabling and disabling the embedded numeric keypad	19
Switching key functions on the embedded numeric keypad	19
Using an external numeric keypad	19
Enabling or disabling num lock mode as you work	19

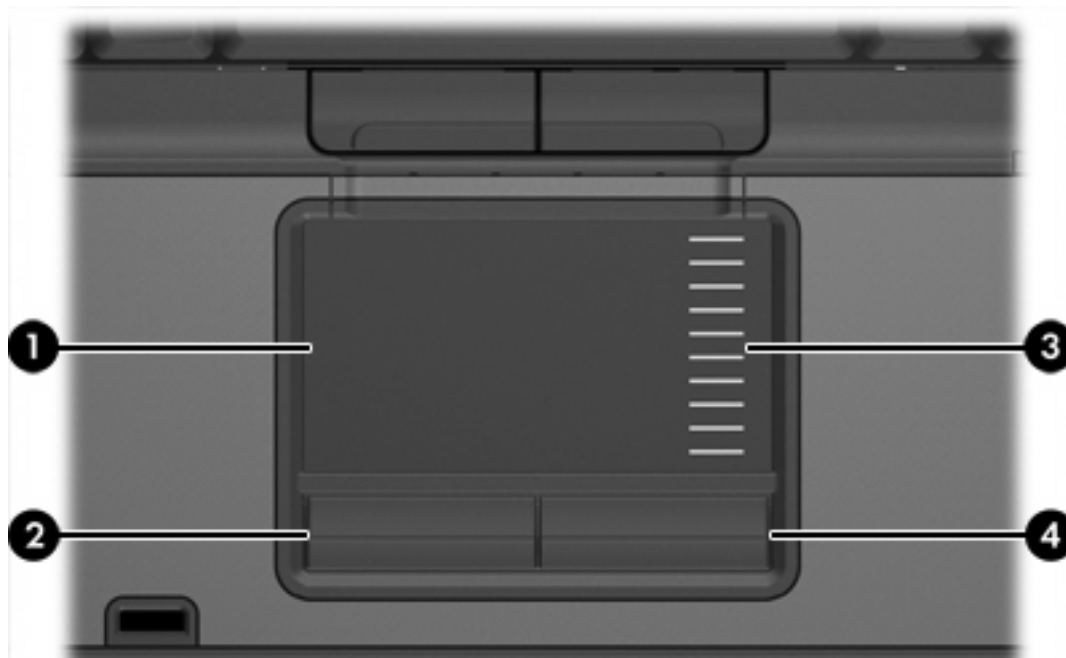
Index	20
--------------------	-----------

1 Pointing Devices

The following chapter describes the use of the TouchPad and pointing devices.

TouchPad

The following illustration and table describe the computer TouchPad.



Component	Description
(1) TouchPad*	Moves the pointer and selects or activates items on the screen. Can be set to perform other mouse functions, such as scrolling, selecting, and double-clicking.
(2) Left TouchPad* button	Functions like the left button on an external mouse.
(3) TouchPad scroll zone*	Scrolls up or down.
(4) Right TouchPad button*	Functions like the right button on an external mouse.

*This table describes factory settings. To view and change pointing device preferences, select **Start > Control Panel > Hardware and Sound > Mouse**.

Using the TouchPad

To move the pointer, slide your finger across the TouchPad surface in the direction you want the pointer to go. Use the TouchPad buttons as you would the corresponding buttons on an external mouse. To scroll up and down using the TouchPad vertical scroll zone, slide your finger up or down over the lines.



NOTE If you are using the TouchPad to move the pointer, you must lift your finger off the TouchPad before moving it to the scroll zone. Simply sliding your finger from the TouchPad to the scroll zone will not activate the scrolling function.

Setting TouchPad preferences

To access Mouse Properties, select **Start > Control Panel > Hardware and Sound > Mouse**.

Use Mouse Properties in Windows® to customize settings for pointing devices, such as button configuration, click speed, and pointer options.

Pointing stick

The following illustration and table describe the computer pointing devices.



Component	Description
(1) Left pointing stick button	Functions like the left button on an external mouse.
(2) Pointing stick	Moves the pointer and selects or activates items on the screen.
(3) Right pointing stick button	Functions like the right button on an external mouse.

*This table describes factory settings. To view and change pointing device preferences, select **Start > Control Panel > Hardware and Sound > Mouse**.

Using the pointing stick

Press the pointing stick in the direction you want to move the pointer on the screen.

Use the left and right pointing stick buttons as you would the left and right buttons on an external mouse.

Using an external mouse

An external USB mouse can be connected to the computer using one of the USB ports on the computer. A USB mouse can also be connected to the system using the ports on an optional docking device.

2 Keyboard

The following sections provide information on the keyboard features of the notebook.

Hotkeys

Hotkeys are combinations of the **fn** key (2) and either the **esc** key (1) or one of the function keys (3).

The icons on the **f3**, **f4**, and **f8** through **f11** keys represent the hotkey functions. Hotkey functions and procedures are discussed in the following sections.



Hotkey quick reference

Function	Key Combination
Display system information.	fn+esc
Clear system information	fn+esc or click OK .
Initiate Sleep.	fn+f3
Alternate image between the computer display and an external display.	fn+f4
Display battery information.	fn+f8
Clear battery information.	fn+f8
Decrease screen brightness.	fn+f9
Increase screen brightness.	fn+f10
Turn on and off ambient light sensor.	fn+f11

Hotkey procedures

To use a hotkey command on the computer keyboard, either

- Briefly press the **fn** key, and then briefly press the second key of the hotkey command.
– or –
- Press and hold down the **fn** key, briefly press the second key of the hotkey command, and then release both keys at the same time.

Displaying system information (fn+esc)

Press **fn+esc** to display information about system hardware components and the system BIOS version number.

In the Windows **fn+esc** display, the version of the system BIOS (basic input-output system) is displayed as the BIOS date. On some computer models, the BIOS date is displayed in decimal format. The BIOS date is sometimes called the system ROM version number.

Initiating Sleep (fn+f3)

Press **fn+f3** to initiate Sleep.

When Sleep is initiated, your information is stored in random access memory (RAM), the screen is cleared, and power is conserved. While the computer is in the Sleep state, the power light blinks.



CAUTION To reduce the risk of information loss, save your work before initiating Sleep.

The computer must be on before you initiate Sleep.



NOTE If a critical battery level occurs while the computer is in the Sleep state, the computer initiates Hibernation and the information stored in RAM is saved to the hard drive. The factory setting for critical battery action is Hibernate, but this setting can be changed in advanced power settings.

To exit Sleep, briefly press the power button.

The function of the **fn+f3** hotkey can be changed. For example, you can set the **fn+f3** hotkey to initiate Hibernation instead of Sleep.



NOTE In all Windows operating system windows, references to the *sleep button* apply to the **fn+f3** hotkey.

Switch the screen image (fn+f4)

Press **fn+f4** to switch the screen image among display devices connected to the system. For example, if a monitor is connected to the computer, each time you press **fn+f4** the image switches among the computer display, the monitor display, and a simultaneous display on both the computer and the monitor.

Most external monitors receive video information from the computer using the external VGA video standard. The **fn+f4** hotkey can also toggle images among other devices receiving video information from the computer, such as S-Video.

The following video transmission types, with examples of devices that use them, are supported by the **fn+f4** hotkey:

- LCD (computer display)
- External VGA (most external monitors)
- S-Video (televisions, camcorders, VCRs, and video capture cards with S-Video-in jacks, on select models)
- Composite video (televisions, camcorders, VCRs, and video capture cards with composite-video-in jacks)



NOTE Composite video devices can be connected to the system only by using an optional docking device.

Viewing battery charge information (fn+f8)

Press **fn+f8** to display charge information for all installed batteries. The display indicates which batteries are charging and reports the amount of charge remaining in each battery.

Decreasing screen brightness (fn+f9)

Press **fn+f9** to decrease screen brightness. Hold down the hotkey to decrease the brightness level incrementally.

Increasing screen brightness (fn+f10)

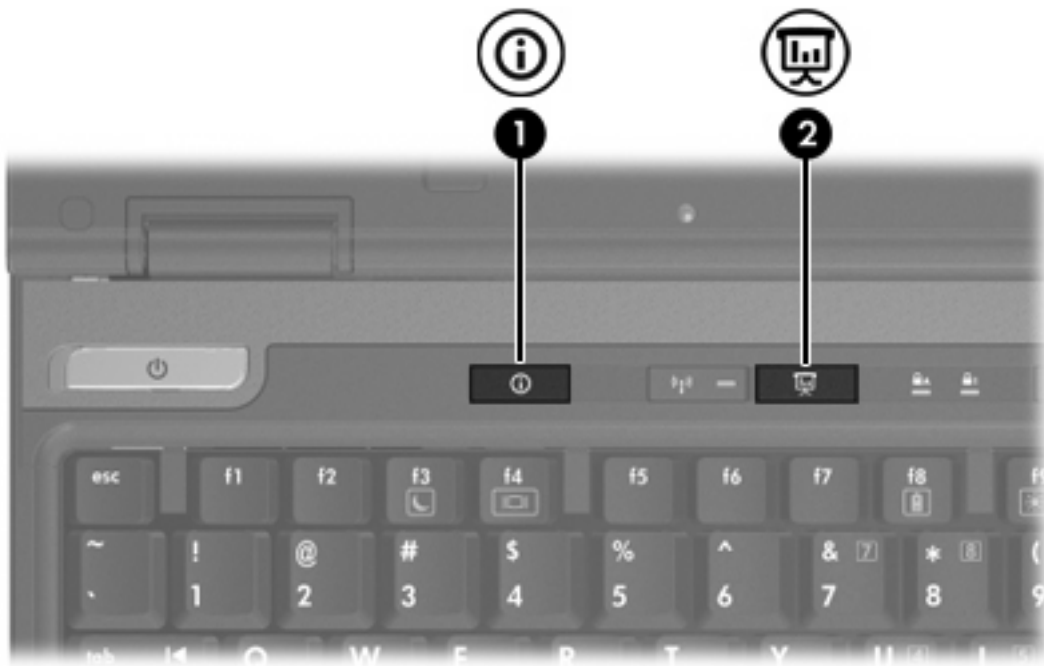
Press **fn+f10** to increase screen brightness. Hold down the hotkey to increase the brightness level incrementally.

Activating the ambient light sensor (fn+f11)

Press **fn+f11** to turn on and off the ambient light sensor.

3 HP Quick Launch buttons

Use the HP Quick Launch buttons to open frequently used programs, sometimes called *applications* in the HP Quick Launch Buttons control panel.



Component	Description
(1) Info Center button	Launches Info Center, which enables you to open various software solutions. You can also reprogram this button to perform one of the following actions: <ul style="list-style-type: none">• Open presentation feature or the Q Menu.• Open an e-mail editor.• Open a search box that allows you to search for a Web site.
(2) Presentation button	Starts the presentation feature. This feature opens a program, folder, file, or Web site, and simultaneously displays it on both the computer screen and on an external device.

Component	Description
	<p>The presentation button can be reprogrammed to perform one of the following actions:</p> <ul style="list-style-type: none"><li data-bbox="817 302 1177 327">• Open the Q Menu or Info Center.<li data-bbox="817 352 1075 378">• Open an e-mail editor.<li data-bbox="817 403 1433 428">• Open a search box that allows you to search for a Web site.

Presentation button



When you press the presentation button for the first time, the Presentation Settings dialog box opens. In this dialog box, you can set the button to perform one of the following actions:

- Open a program, folder, file, or Web site that you specify.
- Choose a display setting.

The image simultaneously displays on the computer screen and on an external device connected to one of the following:

- The external monitor port
- The S-Video-out jack on the rear panel
- Ports and jacks on an optional docking device

If you choose not to use the presentation button factory settings, you can reprogram the button to perform one of the following actions:

- Open the Q Menu or the Info Center.
- Open an e-mail editor.
- Open a search box that allows you to search for a Web site.

Info Center button



When you press the Info Center button for the first time, the Info Center opens, enabling you to open preset software solutions. If you choose not to use this factory setting for the Info Center button, you can reprogram the button to perform one of the following actions:

- Open the Q Menu or start the presentation feature.
- Open an e-mail editor.
- Open a search box that allows you to search for a Web site.

HP Quick Launch Buttons control panel



NOTE Some of the preferences listed in the HP Quick Launch Buttons control panel may not be supported by your computer.

Use the HP Quick Launch buttons to

- Program the presentation button and the Info Center button, and change the settings for each button.
- Add, modify, and remove items on the Q Menu.
- Set preferences for tiling windows on the Windows desktop.
- Specify other preferences, including the following
 - Preferences for the display of the HP Quick Launch Buttons icon.
 - Display of HP Quick Launch Buttons desktop notifications.
 - Enabling or disabling automatic mode change.
 - Enabling or disabling quick switch.
 - Enabling or disabling the display resolution change detection feature.

The following sections provide instructions for setting preferences within the control panel. For additional on-screen information about any item on the control panel, click the help button in the upper-right corner of the window.

Opening the Quick Launch Buttons control panel

You can open the HP Quick Launch Buttons control panel in any of the following ways:

- Select **Start > Control Panel > Hardware and Sound > Quick Launch Buttons**.
- Double-click the **HP Quick Launch Buttons** icon in the notification area, at the far right of the taskbar.
- Right-click the **HP Quick Launch Buttons** icon in the notification area, and select **Adjust HP Quick Launch Buttons Properties**.

Setting button preferences

You can program a button to open the Q Menu, open Info Center, open an e-mail editor, search for a Web site, or open a program, folder, file, or Web site when the button is pressed.

To open the Q Menu or to open the Info Center when the button is pressed:

1. In the HP Quick Launch Buttons control panel, click the **Programmable Buttons** tab.
2. Click the down arrow next to the button you want to set, and click **Q Menu** or **HP Info Center**.
3. To save your preferences and close the control panel, click **Apply**, and then click **OK**.

To open an e-mail editor or to search for a Web site when the button is pressed:

1. In the HP Quick Launch Buttons control panel, click the **Programmable Buttons** tab.
2. Click the down arrow next to the button you want to set, and click **Launch eMail** or **Search URL**.
3. To save your preferences and close the control panel, click **Apply**, and then click **OK**.

To open a program, folder, file, or Web site when the button is pressed:

1. In the HP Quick Launch Buttons control panel, click the **Programmable Buttons** tab.
2. Click the down arrow next to the button you want to set, and click **Presentation**.
3. Click the **Configure** button.
4. In the box under Program to Start, type the name of the program, folder, or file, or the URL of the Web site.

– or –

Click **Browse** to search for available programs, folders, files, or Web sites, and then click to select one.

5. To save your preferences and close the control panel, click **Apply**, and then click **OK**.

Displaying the Q Menu

The Q Menu provides quick access to many of the system tasks accessed with the buttons, keys, or hotkeys found on most computers.

To display the Q Menu on the desktop:

- ▲ Right-click the HP Quick Launch Buttons icon and select **Launch Q Menu**.

Setting Q Menu preferences

The Q Menu can display up to 40 items. Several system-defined items are set at the factory. You can choose to display these items or choose not to display them. Only user-defined items can be added. All items, including those defined in the factory settings, can be removed.

The items on the Q Menu are managed from the Items to display on Q Menu list.

Removing a Q Menu item

To remove an item from the Q Menu:

1. In the HP Quick Launch Buttons control panel, click the **Q Menu** tab.
2. On the **Items to display on Q Menu** list, clear the check box for each item you want to remove.
3. To save your preferences and close the control panel, click **Apply**, and then click **OK**.

Adding a listed item to the Q Menu

To add an item from the Items to display on Q Menu list to the Q Menu:

1. In the HP Quick Launch Buttons control panel, click the **Q Menu** tab.
2. Select the check box for the item you want to add.
3. To save your preferences and close the control panel, click **Apply**, and then click **OK**.

Adding a user-defined item to the Q Menu

To add an item to both the Items to display on Q Menu list and to the Q Menu when the item is not on the Items to display on Q Menu—for example, an item on a drive, network, or the Internet:

1. In the HP Quick Launch Buttons control panel, click the **Q Menu** tab.
2. Click **Add**.
3. In the **Add New Menu Entry** dialog box, you can add the item by typing or by browsing:
 - To add the item using the keyboard, type a name for the item in the **Display Name** box and type the path to the item in the **File Name** box. If you prefer to type the Display Name, but browse for the File Name, leave the **File Name** box blank.
 - To add an item by browsing, click the **Browse** button.

In the window, select the item. (The full name of the item is displayed in the **File Name** box and, if you did not type a name earlier in the **Display Name** box, a Display Name is generated from the item name and displayed in the **Display Name** box.)

4. To save your preferences and close the control panel, click **Apply**, and then click **OK**.

Changing a user-defined item

User-defined items can be changed, but system-defined items cannot be changed. If you select a system-defined item on the Items to display on Q Menu list, the Modify button is unavailable.

To change the display name and/or file name of a user-defined item:

1. In the HP Quick Launch Buttons control panel, click the **Q Menu** tab.
2. Click the item on the **Items to display on Q Menu** list.
3. Click **Modify**.
 - To change the Display Name or File Name of the item using the keyboard, type the new name for the item in the **Display Name** box or type the new path to the item in the **File Name** box. If you prefer to type the Display Name, but browse for the File Name, leave the **File Name** box blank.
 - To change the Display Name or File Name by browsing, click the **Browse** button.

In the window, select the item. (The full name of the item is displayed in the **File Name** box and, if you did not type a name earlier in the **Display Name** box, a Display Name is generated from the item name and displayed in the **Display Name** box.)

4. To save your preferences and close the control panel, click **Apply**, and then click **OK**.

Repositioning a Q Menu item

To change the location of an item on the Q Menu:

1. In the HP Quick Launch Buttons control panel, click the **Q Menu** tab.
2. Select the item on the **Items to display on Q Menu** list. Then
 - To move the item up in the list, click the **Move Up** button.
 - To move the item down in the list, click the **Move Down** button.
3. To save your preferences and close the control panel, click **Apply**, and then click **OK**.

Removing an item from the Items to display on Q Menu list

System-defined items cannot be removed from the Items to display on Q Menu list.

To remove a user-defined item:

1. In the HP Quick Launch Buttons control panel, click the **Q Menu** tab.
2. Click the item you want to remove.
3. Click **Remove**.
4. To save your preferences and close the control panel, click **Apply**, and then click **OK**.

Setting tiling preferences

To set tiling preferences on the Windows desktop:

1. In the HP Quick Launch Buttons control panel, click the **Quick Tile** tab.
2. Click **Vertical Tile** or **Horizontal Tile**, and then click the programs you want to be tiled in the **Applications currently running** box.
3. To save your preferences and close the control panel, click **OK**.

Setting the ambient light sensor

The computer features a built-in light sensor that automatically adjusts the display brightness based on the lighting conditions in your environment.

You can turn the ambient light sensor on and off in 2 ways:

- By pressing **fn+f1**.
- By right-clicking the Quick Launch Buttons software icon in the notification area, at the far right of the taskbar, and clicking **Turn Ambient light sensor on/off**.

Setting other preferences

You can set other preferences in the Quick Launch Button control panel.



NOTE Some of the preferences listed on the Preferences tab may not be supported by your computer.

To set a preference:

1. In the HP Quick Launch Buttons control panel, click the **Preferences** tab.
2. To display or enable a preference, select the check box next to the item.

– or –

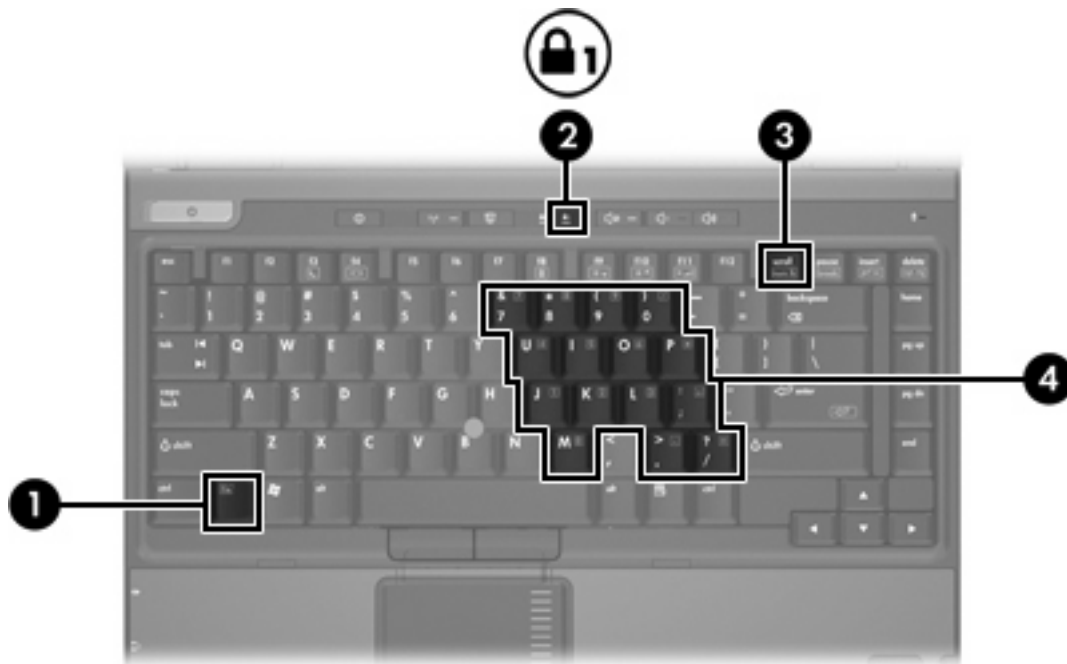
To clear or disable a preference, clear the check box next to the item.



NOTE For on-screen information about any item on the Preferences tab, click the Help button in the upper-right corner of the window, and then click the item.

4 Keypads

The computer has an embedded numeric keypad and also supports an optional external numeric keypad or an optional external keyboard that includes a numeric keypad.



Component	
(1)	fn key
(2)	num lock light
(3)	num lk key
(4)	Embedded numeric keypad

Using the embedded numeric keypad

The 15 keys of the embedded numeric keypad can be used like the keys on an external keypad. When the embedded numeric keypad is turned on, each key on the keypad performs the function indicated by the icon in the upper-right corner of the key.

Enabling and disabling the embedded numeric keypad

Press **fn+num lk** to enable the embedded numeric keypad. The num lock light is turned on. Press **fn +num lk** again to return the keys to their standard keyboard functions.



NOTE The embedded numeric keypad will not function while an external keyboard or numeric keypad is connected to the computer or to an optional docking device.

Switching key functions on the embedded numeric keypad

You can temporarily alternate the functions of keys on the embedded numeric keypad between their standard keyboard functions and their keypad functions by using the **fn** key or the **fn+shift** key combination.

- To change the function of a keypad key to keypad functions while the keypad is off, press and hold the **fn** key while pressing the keypad key.
- To use the keypad keys temporarily as standard keys while the keypad is on:
 - Press and hold the **fn** key to type in lowercase.
 - Press and hold **fn+shift** to type in uppercase.

Using an external numeric keypad

Most keys on most external numeric keypads function differently according to whether num lock mode is on or off. (The num lock mode is turned off at the factory.) For example:

- When num lock is on, most keypad keys type numbers.
- When num lock is off, most keypad keys function like the arrow, page up, or page down keys.

When num lock on an external keypad is turned on, the num lock light on the computer is turned on. When num lock on an external keypad is turned off, the num lock light on the computer is turned off.

If an external keypad is connected, the embedded numeric keypad cannot be turned on.

Enabling or disabling num lock mode as you work

To turn num lock on or off on an external keypad as you work:

- ▲ Press the **num lk** key on the external keypad, not on the computer.

Index

- A**
 - activating ambient light sensor
 - hotkey 8
 - ambient light sensor
 - setting 16
- B**
 - battery charge information 6, 8
 - buttons
 - Info Center 12
 - pointing stick 4
 - Presentation 11
 - Quick Launch 9
 - Quick Launch Buttons
 - software 13
 - TouchPad 2
- C**
 - composite video 8
- D**
 - display
 - image, switching 6, 8
 - screen brightness hotkeys 6, 8
- E**
 - external keyboard
 - assignments 16
- F**
 - fn key 5
 - function keys 5
- H**
 - hotkeys
 - activating ambient light sensor 6
 - ambient light sensor 8
 - battery charge information 6, 8
 - clearing system information 6
 - decreasing screen brightness 6, 8
 - description 5
 - displaying system information 6
 - increasing screen brightness 6, 8
 - initiating Sleep 6
 - quick reference 6
 - switching screen image 6, 8
 - using 6
- I**
 - icon assignments 16
 - Info Center button 12
- K**
 - keyboard hotkeys 5
 - keypad, embedded
 - enabling and disabling 19
 - identifying 18
 - switching key functions 19
 - using 19
 - keypad, external
 - num lock mode 19
 - using 19
- M**
 - mouse, external
 - setting preferences 2
 - using 4
- N**
 - num lock mode, external
 - keypad 19
- P**
 - pointing devices
 - identifying 4
 - using 4
 - pointing stick
 - buttons 4
 - identifying 4
 - using 4
 - Presentation button 11
- Q**
 - Q Menu 14
 - Quick Launch buttons 9
 - Quick Launch buttons
 - software 13
- S**
 - S-Video 8
 - screen brightness hotkeys 6, 8
 - screen image, switching 6, 8
 - Sleep hotkey 6
 - software
 - Quick Launch buttons 13
 - system information
 - hotkey 6
 - system information hotkey 6
- T**
 - tiling preferences 16
 - TouchPad
 - buttons 2
 - setting preferences 2
 - using 2
- V**
 - video transmission types 8

