

HP 2400/2500 Ultra-Light Docking Station User Guide

© Copyright 2007 Hewlett-Packard
Development Company, L.P.

Microsoft is a U.S. registered trademark of
Microsoft Corporation.

The information contained herein is subject
to change without notice. The only
warranties for HP products and services are
set forth in the express warranty statements
accompanying such products and services.
Nothing herein should be construed as
constituting an additional warranty. HP shall
not be liable for technical or editorial errors
or omissions contained herein.

Second Edition: May 2007

First Edition: March 2006

Document Part Number: 403719-002

Table of contents

1 Identifying components	
Top components	1
Right-side components	2
Rear components	3
Getting more information	4
2 Docking and undocking	
Connecting to the AC adapter	5
Docking the computer	7
Undocking the computer	8
3 Using the docking station	
Turning the computer on and off	9
Connecting an optional security cable	10
4 Troubleshooting	
Docking and undocking problems and solutions	13
External device problems and solutions	14
Index	15

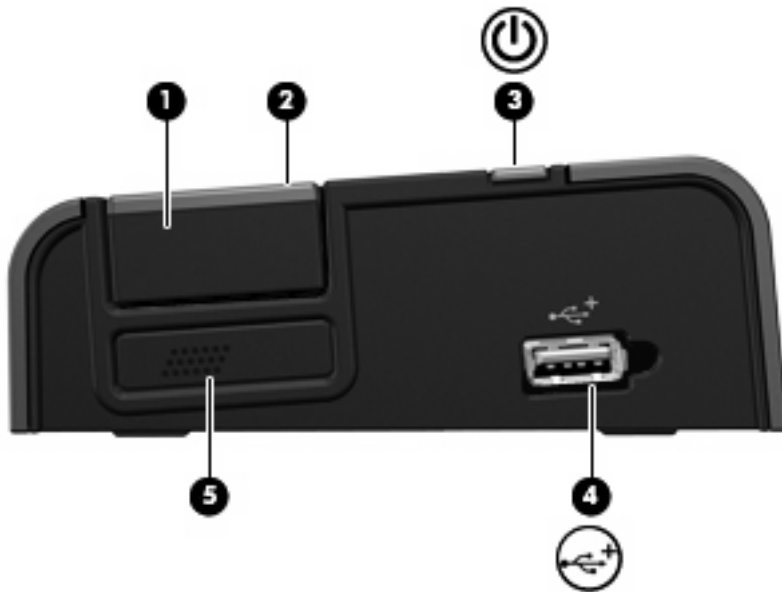
1 Identifying components

Top components



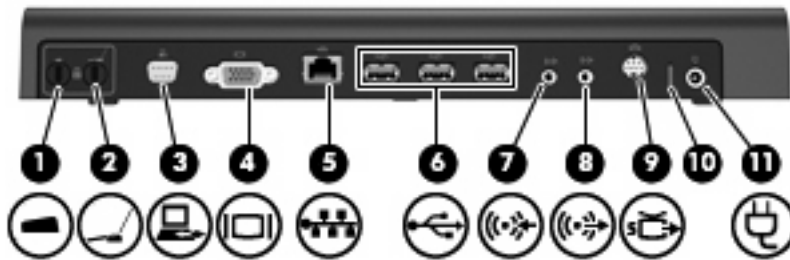
Component	Description
(1) Docking posts (2)	Align and secure the computer for proper connection to the docking station.
(2) Power button	Turns on power to the computer.
(3) Computer power light	On: A docked computer is turned on.
(4) Computer connect/release mechanisms (2)	Connect and release the computer when you press the connect button.
(5) Docking connector	Connects the computer to the docking station.
(6) Connect button	Secures and releases the computer. <ul style="list-style-type: none">• Slide in to secure the computer.• Slide out to release the computer.
(7) Connect light	On: A computer is fully docked.

Right-side components



	Component	Description
(1)	Connect button	Secures and releases the computer <ul style="list-style-type: none">• Slide in to secure the computer.• Slide out to release the computer.
(2)	Connect light	On: A computer is fully docked.
(3)	Computer power light	<ul style="list-style-type: none">• On: A docked computer is turned on.• Blinking: A docked computer is in the Sleep or Standby state.• Off: A docked computer is off or in Hibernation.
(4)	Powered USB 2.0 port	Provides power to an external device if used with a powered USB cable.
(5)	Vent	Enables airflow to cool internal components. CAUTION: To prevent overheating, do not obstruct vents. Use the computer and the docking station only on a hard, flat surface. Do not allow another hard surface, such as an adjoining optional printer, or a soft surface, such as pillows or thick rugs or clothing to block airflow.

Rear components



Component	Description	
(1)	Integrated security cable slot (for locking docking station only)	Supports an optional security cable, which secures the docking station when a computer is not connected.
(2)	Integrated security cable slot (for locking computer <i>and</i> docking station)	Supports an optional security cable, which secures the docking station and connected computer.
(3)	Monitor stand port	Connects an optional HP Monitor Stand to the docking station.
(4)	External monitor port	Connects an external VGA monitor.
(5)	RJ-45 (network) jack	Connects a network cable.
(6)	USB ports (3)	Connect USB devices.
(7)	Audio-in jack	Connects home audio equipment such as CD and MP3 players.
(8)	Audio-out jack	Produces computer sound when connected to optional powered stereo speakers, headphones, ear buds, a headset, or television audio.
(9)	S-Video-out jack	Connects an S-Video device such as a TV, VCR, or camcorder.
(10)	Power light	On: The docking station is connected to AC power.
(11)	Power connector	Connects the docking station to the AC adapter.

Getting more information

⚠ WARNING! To reduce the risk of serious injury, read the *Safety and Comfort Guide*. It describes proper workstation setup, and proper posture, health, and work habits for notebook users. The *Safety and Comfort Guide* also provides important electrical and mechanical safety information. This guide is available on the Web at <http://www.hp.com/ergo>, on the notebook hard drive, and through Help and Support at **Start > Help and Support**.

- Help and Support also includes governmental agency and safety information about the use of your computer.
- Governmental agency and safety information about the use of this device is also included on the *Accessory User Guides* disc.
- The HP Web site at <http://www.hp.com> provides product news and software updates.

2 Docking and undocking

Connecting to the AC adapter

The docking station requires AC power for full functionality of all ports.

⚠ **WARNING!** To reduce the risk of electric shock or damage to your equipment:

Plug the power cord into an AC outlet that is easily accessible at all times.

Disconnect the power from the product by unplugging the power cord from the AC outlet.

If provided with a 3-pin attachment plug on your power cord, plug the cord into a grounded (earthed) 3-pin outlet. Do not disable the power cord grounding pin; for example, by attaching a 2-pin adapter. The grounding pin is an important safety feature.

Do not place anything on power cords or cables. Arrange them so that no one can accidentally step on or trip over them.

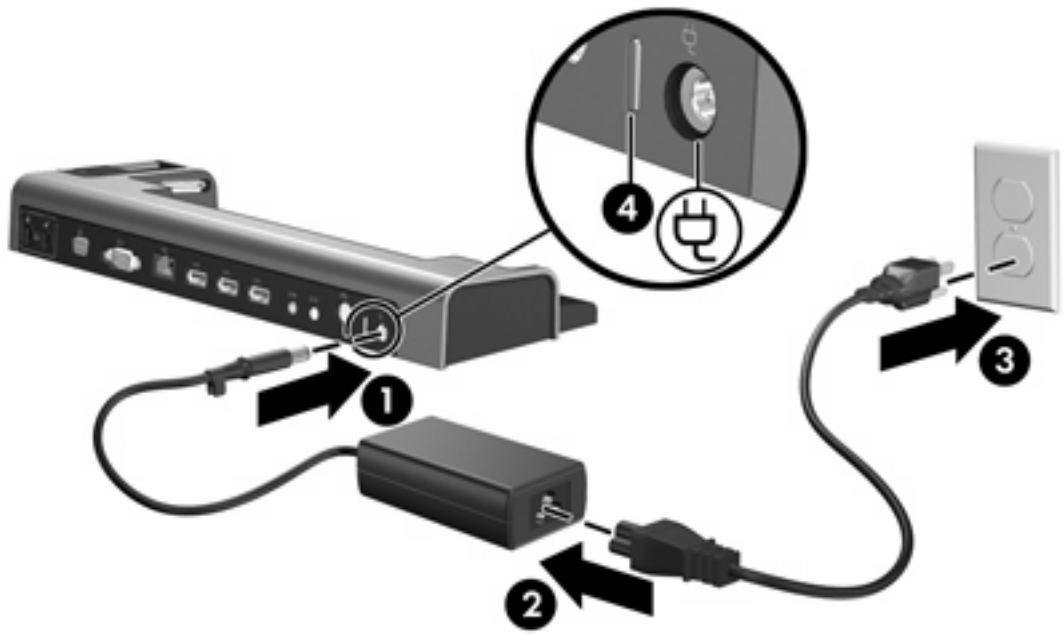
Do not pull on a cord or cable. When unplugging a cord from the AC outlet, grasp the cord by the plug.

WARNING! To reduce the risk of electric shock, fire, or damage to the equipment, do not attempt to operate the computer and docking station with a voltage converter kit sold for appliances. Use only the power cord included with the docking station.

To connect the docking station to AC power:

1. Plug the AC adapter into the power connector **(1)** on the docking station.
2. Plug the power cord into the AC adapter **(2)**.
3. Plug the other end of the power cord into an AC outlet **(3)**.

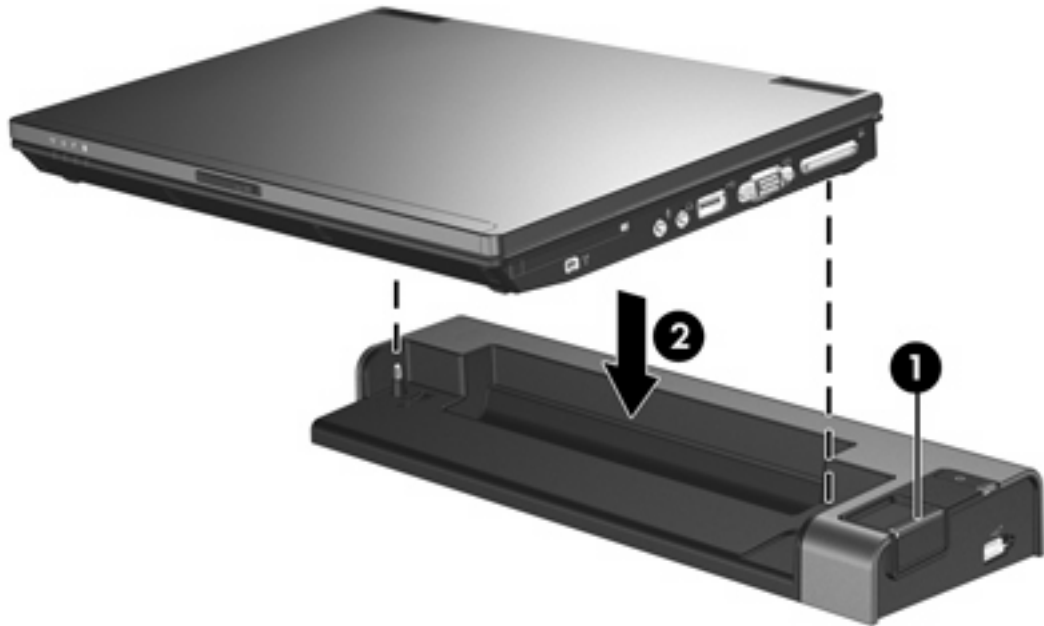
The power light **(4)** on the rear of the docking station is turned on.



Docking the computer

To dock the computer:

1. Be sure the connect button is fully retracted (1).
2. Align the docking posts on the docking station with the receptors on the bottom of the computer and lower the computer into the docking station (2).



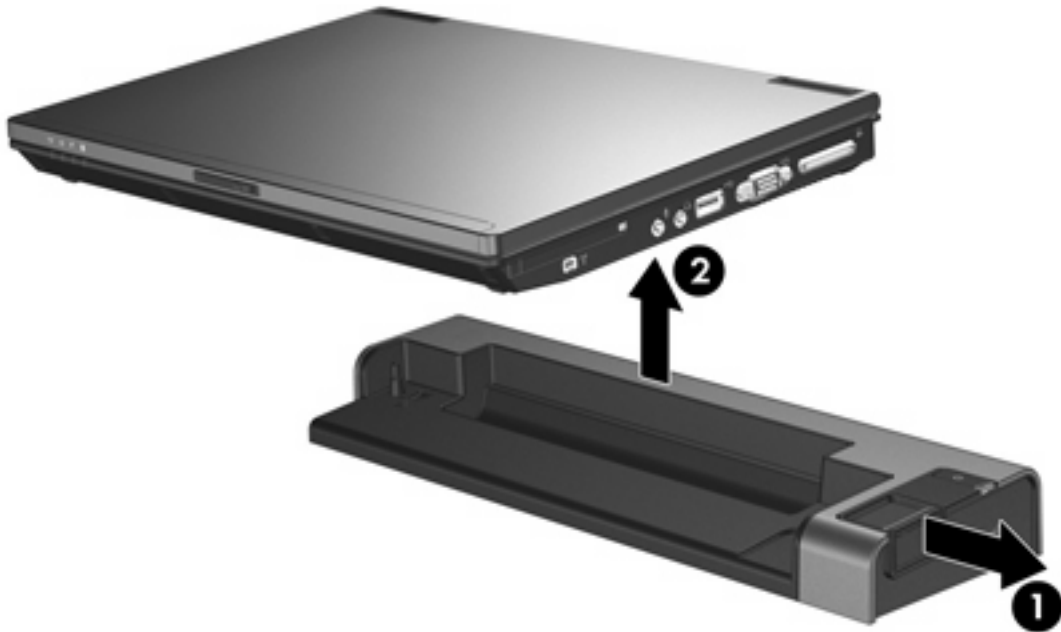
3. Slide the connect button (1) to the left to fully dock the computer.
The connect light (2) will be turned on.



Undocking the computer

To undock the computer:

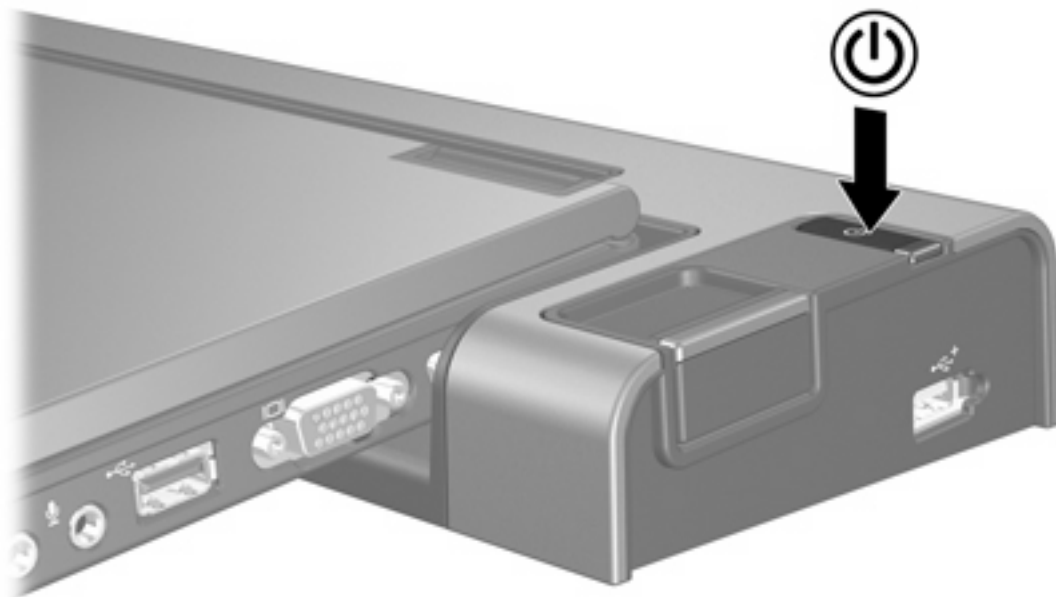
1. Slide the connect button (1) to the right. The computer disconnects from the docking station.
2. Lift up the computer (2).



3 Using the docking station


Turning the computer on and off

When you connect a computer to the docking station, you can turn the computer on and off using either the computer power button or the docking station power button.



When you turn on the computer using either button, the computer power light on the docking station is turned on.

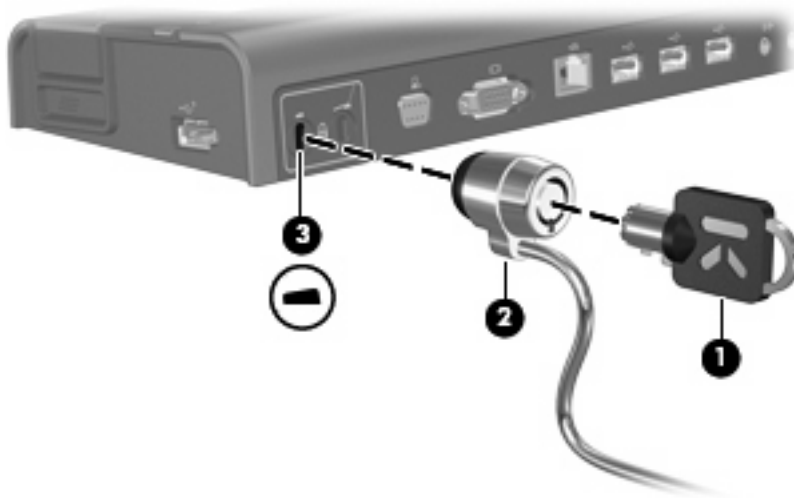
Connecting an optional security cable

 **NOTE:** The security cable is designed to act as a deterrent, but it may not prevent the computer from being mishandled or stolen.

The docking station has two security cable slots. One slot is used to secure the docking station when a computer is not docked. The other slot is used to secure the docking station and a docked computer.

To connect an optional security cable when a computer is *not* docked:

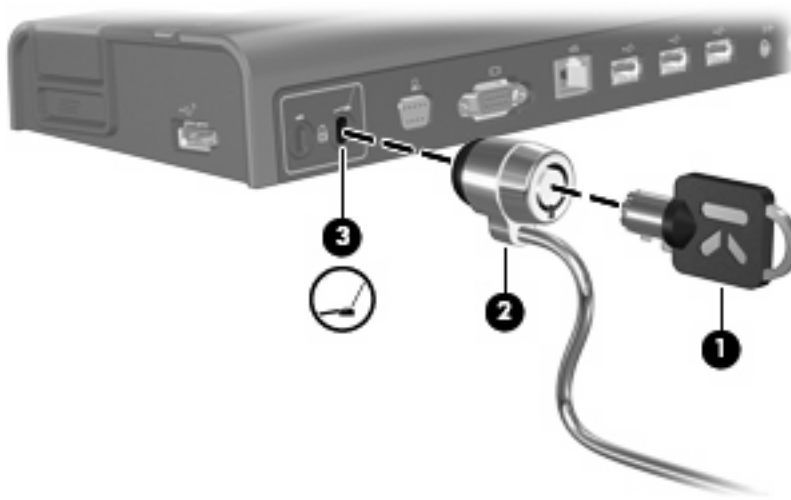
1. Loop the security cable around a secured object.
2. Insert the key (1) into the cable lock (2).
3. Insert the cable lock into the security cable slot on the left (3), and then lock the cable lock with the key.



To connect an optional security cable when a computer *is* docked:

1. Loop the security cable around a secured object.
2. Insert the key (1) into the cable lock (2).

3. Insert the cable lock into the security cable slot on the right (3), and then lock the cable lock with the key.



4 Troubleshooting

If you experience problems with your docking station, follow the troubleshooting steps below:

1. Refer to the information in this chapter.
2. Access Help and Support by selecting **Start > Help and Support** from your computer. In addition to providing information about your operating system, Help and Support provides a searchable database of help topics, updated regularly by HP and Microsoft. Type in the name of your accessory—for example, docking station—to search for relevant topics in the HP Knowledge Base and Microsoft® Knowledge Base.
3. Visit the HP Web site at <http://www.hp.com>. Then select your country or region.

Docking and undocking problems and solutions

Problem	Possible cause	Solution
The connect button on the docking station will not slide to secure the computer.	An optional security cable is connected to the wrong security cable slot.	Disconnect the security cable.
The computer is turned on and properly docked, but the power light is not on.	The power cord is not plugged into either the docking station or the AC outlet.	Properly plug in the power cord.
The computer will not disconnect from the docking station.	The connectors may be jammed.	Slide the connect button all the way in and then slide it all the way out. If the computer does not disconnect, repeat this procedure. CAUTION: Applying excessive force may damage connector pins.
	An optional security cable is connected.	Disconnect the security cable.

External device problems and solutions

Problem	Possible Cause	Solution
A new device is not recognized as part of the system.	The computer may not be fully seated or docked in the docking station.	Undock the computer and dock it again. Be sure the computer is properly seated and fully docked.
	The device cable or power cord is loose.	<ul style="list-style-type: none">• Be sure that all cables are securely connected to the device and the docking station.• Be sure that all power cords are securely plugged into the device or docking station and into an AC outlet.
	The device was connected while the system was on.	Turn off the computer, turn on the device (if applicable), and then turn on the computer.
	Cabling is incorrect.	Be sure that the device cable is in the correct connector on the docking station.
	You may need to install device drivers on the computer.	Install drivers according to the device manufacturer's instructions.

Index

A

AC adapter, connecting 5
additional information 4
audio-in jack 3
audio-out jack 3

B

buttons
 connect 1, 2, 7, 8
 power 1, 9

C

computer
 docking 7
 turning off and on 9
 undocking 8
computer power light 1, 2
connect button 1, 2, 7, 8
connect light 1, 2, 7
connectors
 docking 1
 power 3

D

device not recognized 14
docking connector 1
docking posts 1
docking problems 13
docking the computer 7

E

external devices,
 troubleshooting 14
external monitor port 3

H

help 4

J

jacks
 audio-in 3
 audio-out 3
 RJ-45 (network) 3
 S-Video-out 3

L

lights
 computer power 1, 2
 connect 1, 2, 7
 power 3, 5

M

monitor stand port 3

N

network jack 3

P

ports
 external monitor 3
 monitor stand 3
 USB 2, 3
power button 1, 9
power connector 3
power light 3, 5
power light, computer 1, 2
power, connecting 5
powered USB port 2

R

rear components 3
right-side components 2
RJ-45 (network) jack 3

S

S-Video-out jack 3
safety information 4
security cable slots 3, 10

security cable, connecting 10
slots, security cable 3, 10

T

top components 1
troubleshooting 12
turning off and on the computer 9

U

undocking problems 13
undocking the computer 8
USB port 2, 3

V

vent 2

