



THE  
COMPUTER  
IS PERSONAL  
AGAIN.

HP Pavilion dv6000 Entertainment PC

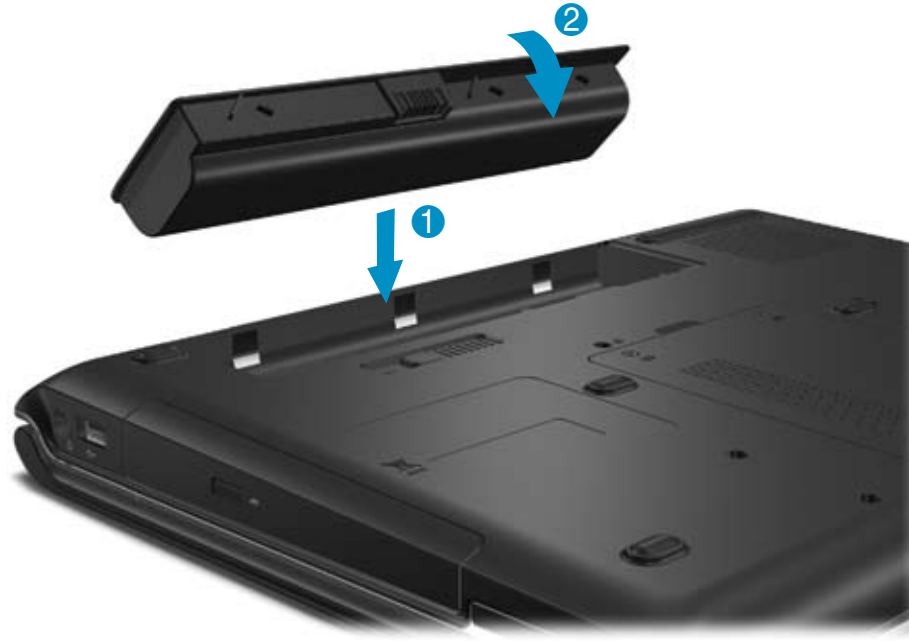


# Quick setup

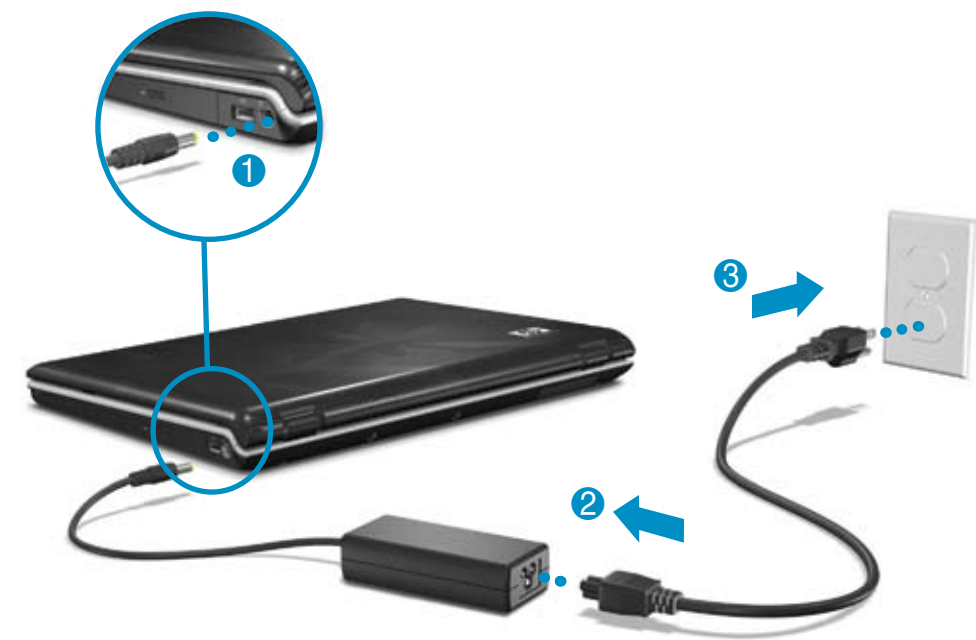
## 1 Unpack the box



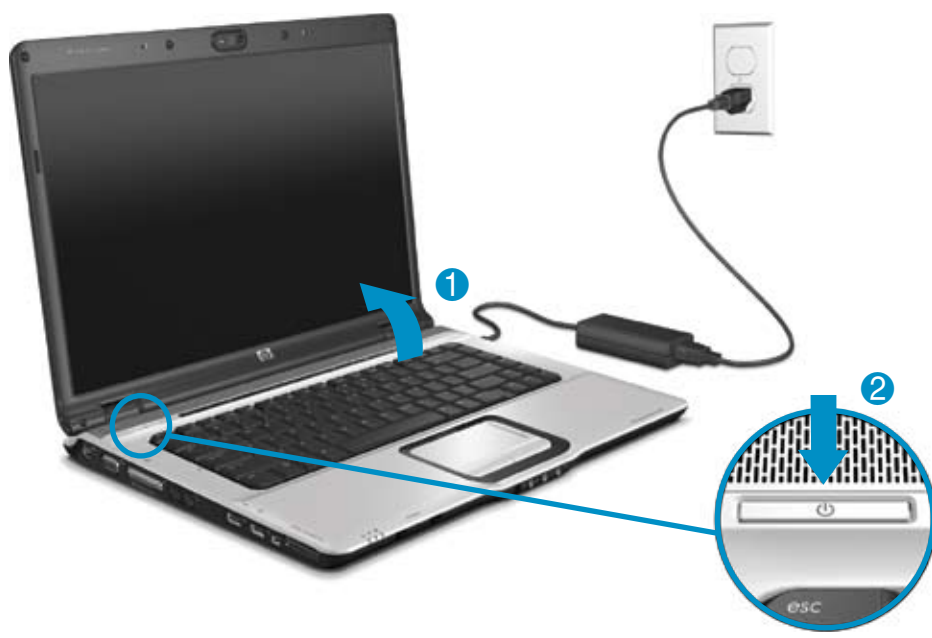
## 2 Insert the battery



## 3 Connect to external power



## 4 Turn on the computer



## 5 Follow the on-screen instructions

The instructions will guide you through setting up and registering your computer.

## 6 Next steps

Now you can use the computer for these activities:

- Watching movies
- Playing games
- Setting up a wireless network
- Connecting to the Internet
- Installing additional software and hardware
- Creating recovery discs
- Protecting the computer from viruses

For more information on these topics, refer to the *Quick Reference* guide.

Replace this box with PI statement as per spec.



437318-002

**WARNING:** To reduce the risk of electric shock or damage to your equipment:

- Plug the power cord into an AC outlet that is easily accessible at all times.
- Disconnect power from the computer by unplugging the power cord from the AC outlet (not by unplugging the power cord from the computer).
- If provided with a 3-pin attachment plug on your power cord, plug the cord into a grounded (earthed) 3-pin outlet. Do not disable the power cord grounding pin, for example, by attaching a 2-pin adapter. The grounding pin is an important safety feature.

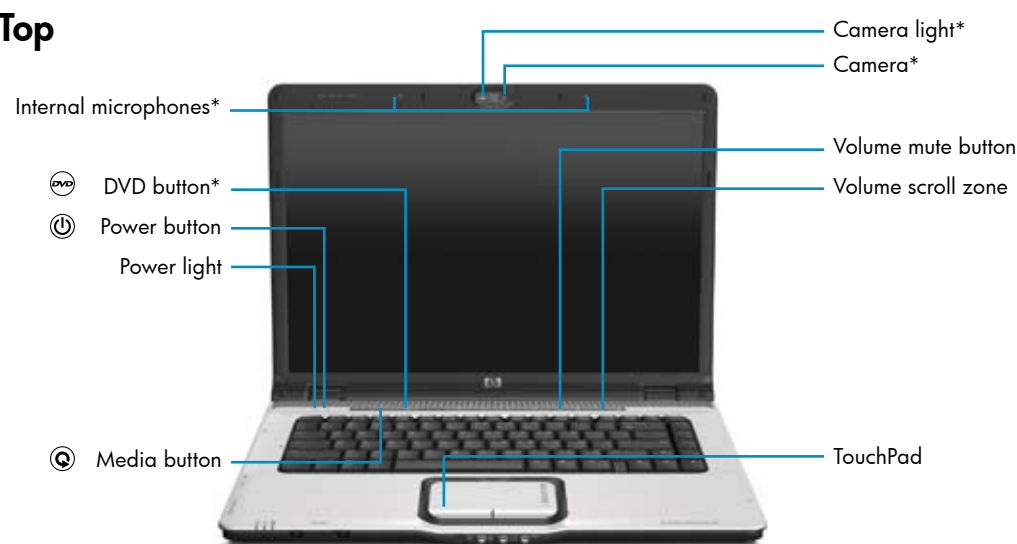
For more safety and regulatory information, and for battery disposal information, refer to the *Regulatory, Safety and Environmental Notices* located in Help and Support. Select **Start > Help and Support > User Guides**.

© Copyright 2007 Hewlett-Packard Development Company, L.P.  
The information contained herein is subject to change without notice. The only warranties for HP products and services are set forth in the express warranty statements accompanying such products and services. Nothing herein should be construed as constituting an additional warranty. HP shall not be liable for technical or editorial errors or omissions contained herein.

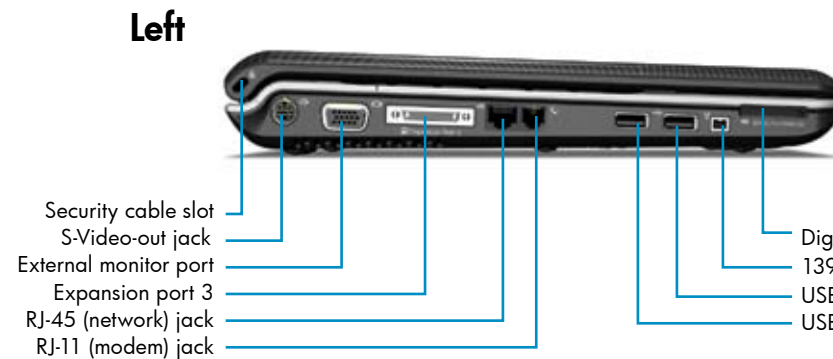
First Edition: January 2007

# Quick tour

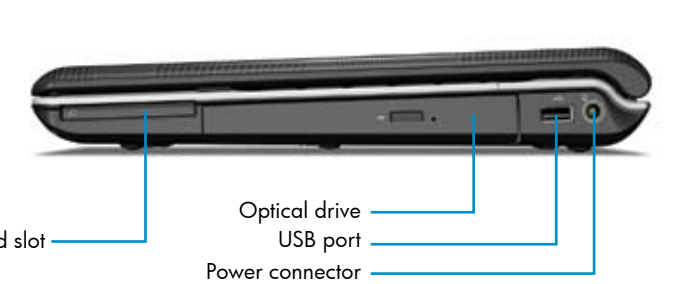
### Top



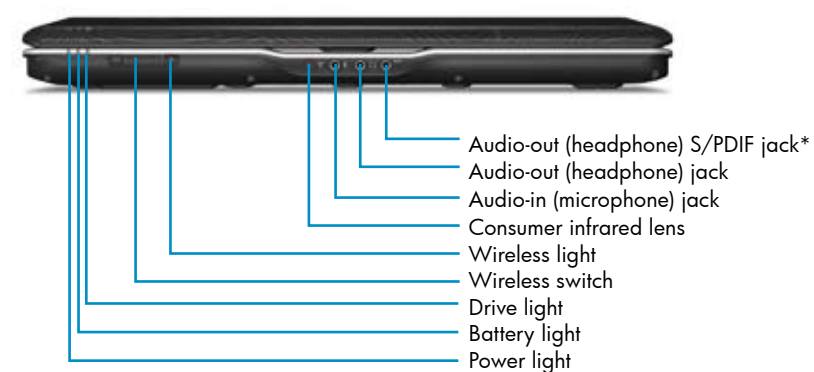
### Left



### Right



### Front



\*Select models only

# Setup Instructions

Thank you for purchasing an HP computer!

### Go to Help and Support today!

Select **Start > Help and Support** to become familiar with all of the tools available to help keep your computer running smoothly, from enhanced driver updates to online diagnostics. Help and Support is your personal technician!

Help and Support also provides the following resources:

#### Product information and user guides

Learn more about using your computer. Select **Start > Help and Support > User Guides**.

#### Security support for your computer

Learn how to protect your computer from threats and viruses.

#### Diagnostic tools (English only)

- System Health Check
- PC Tune Up