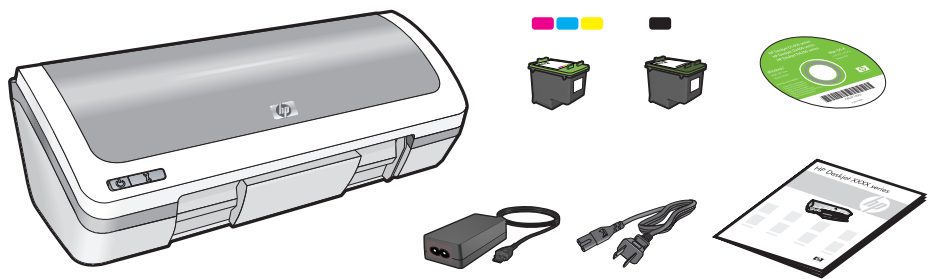


Setup Guide

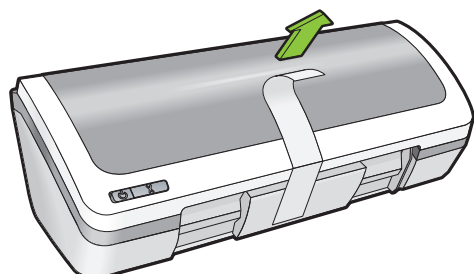
HP 910 Printer



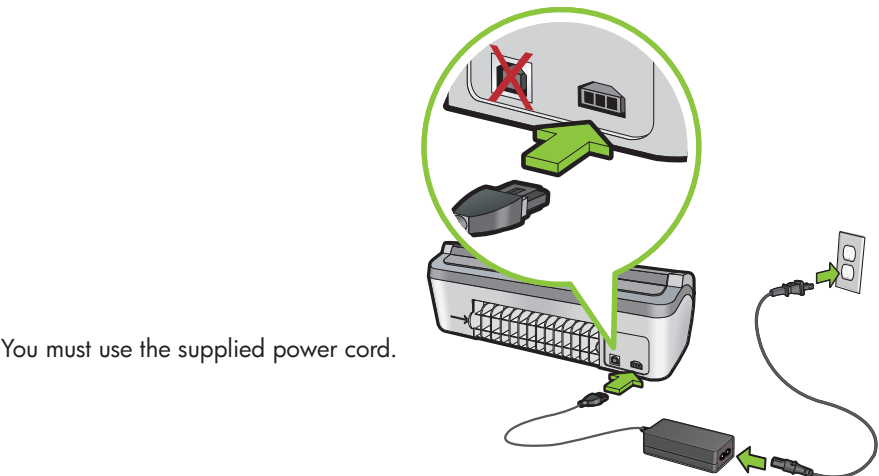
CB722-90005



1 Remove packing material.

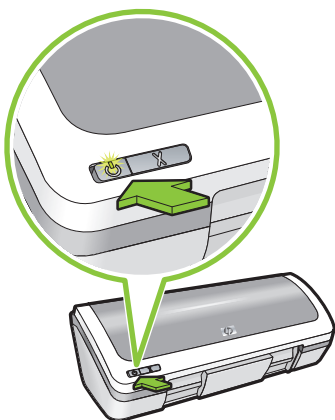


2 Plug in power supply.

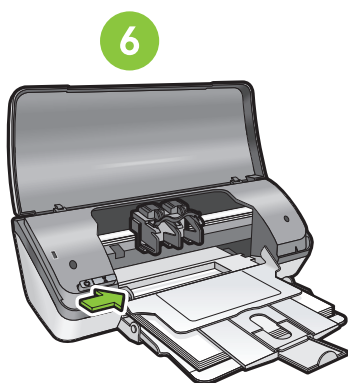
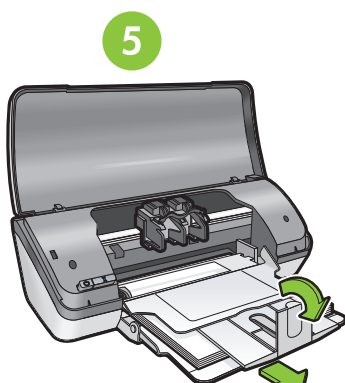
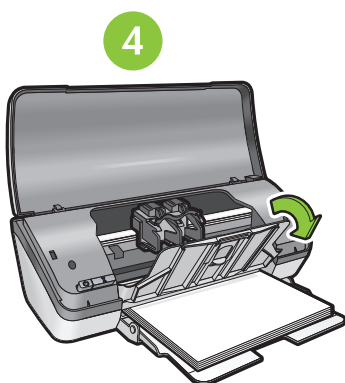
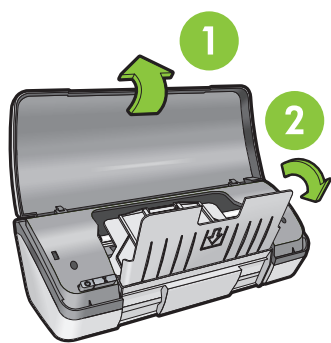


You must use the supplied power cord.

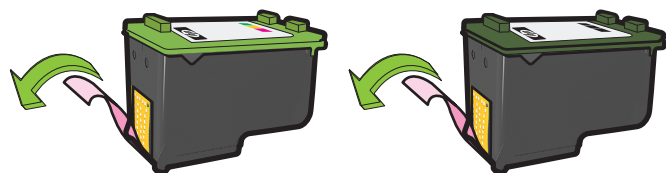
3 Turn printer on.



4 Load white paper. Slide paper guide firmly against paper.

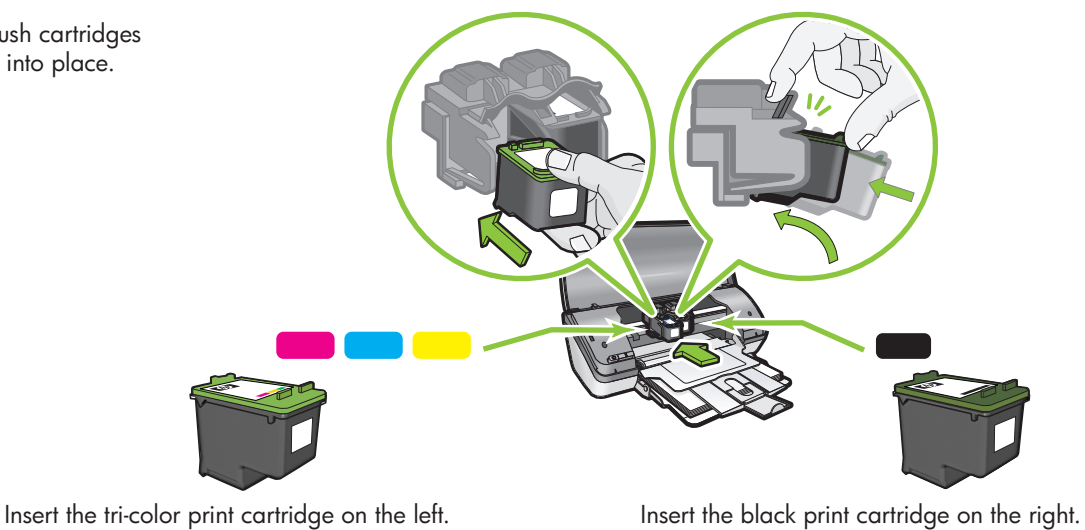


5 1 Pull pink tab to remove clear tape from print cartridges.



Do not touch copper strip.

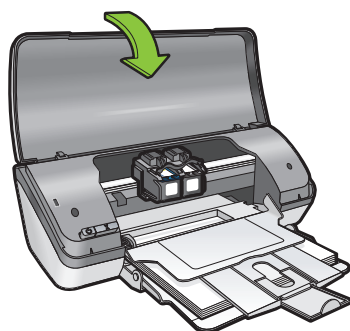
2 Insert print cartridges. Push cartridges forward until they 'click' into place.



Insert the tri-color print cartridge on the left.

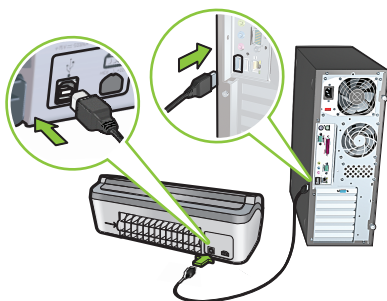
Insert the black print cartridge on the right.

6 Close top cover.

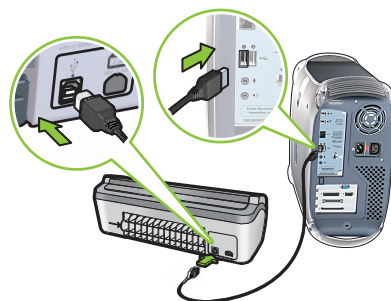


7 Connect USB cable.

Windows



Macintosh



Purchase a USB cable separately if it is not included.

Windows

See step 8a.

Macintosh

See step 8b.



8a

Windows

Install Windows printer software

- 1 Wait until a wizard displays on your computer.
This can take several seconds.
- 2 Follow the screens.
- 3 Insert the CD when directed.
- 4 The HP wizard screen displays.
- 5 Follow onscreen instructions in the HP wizard.

No screen?

1. Click the **Start** button, then select **Run**.
2. Click the **Browse** button.
3. Select **HPPP CD** in the **Look in** drop-down list.
4. Select **Setup**, then click the **Open** button.
5. Click **OK**, then follow the onscreen instructions.

If there is no plug and play, see the Reference Guide.

If the Windows software installation fails:

- 1 Remove the CD from the computer's CD-ROM drive, and then disconnect the USB cable from the computer.
- 2 Restart the computer.
- 3 Temporarily disable any software firewall and close any anti-virus software. Re-start these programs after the printer is installed.
- 4 Insert the printer software CD in the computer's CD-ROM drive, then follow the onscreen instructions to install the printer software. Do not connect the USB cable until you are told to do so.
- 5 After the installation finishes, restart the computer.

8b

Macintosh

Install Macintosh printer software

- 1 Insert the printer software CD into the CD-ROM drive.
- 2 Double-click the CD icon in the Finder window, if it is not already open.
- 3 Double-click the installer icon.
- 4 Accept the licensing agreement.
- 5 Click **Install**.
Wait for the installation to complete.

If the Installation Fails...



Make sure the printer is powered on.



USB

Make sure the cable connections are secure.

Need more help?



www.hp.com/support