

# External Media Cards

---

User Guide

© Copyright 2007 Hewlett-Packard  
Development Company, L.P.

SD Logo is a trademark of its proprietor.

The information contained herein is subject to change without notice. The only warranties for HP products and services are set forth in the express warranty statements accompanying such products and services. Nothing herein should be construed as constituting an additional warranty. HP shall not be liable for technical or editorial errors or omissions contained herein.

First Edition: April 2007

Document Part Number: 439812-001

## Product notice

This user guide describes features that are common to most models. Some features may not be available on your computer.



---

# Table of contents

<b>1 Using Digital Media Slot cards</b>	
Inserting a digital card .....	2
Stopping and removing a digital card .....	3
<b>2 Using ExpressCards</b>	
Configuring an ExpressCard .....	4
Inserting an ExpressCard .....	5
Stopping and removing an ExpressCard .....	6
<b>Index .....</b>	<b>7</b>



---

# 1 Using Digital Media Slot cards

Optional digital cards provide secure data storage and convenient data sharing. These cards are often used with digital media-equipped cameras and PDAs as well as with other computers.

The Digital Media Slot supports the following digital card formats:

- Memory Stick (MS)
- Memory Stick Pro (MSP)
- MultiMediaCard (MMC)
- Secure Digital Input/Output (SD I/O)
- Secure Digital (SD) Memory Card
- xD-Picture Card (XD)

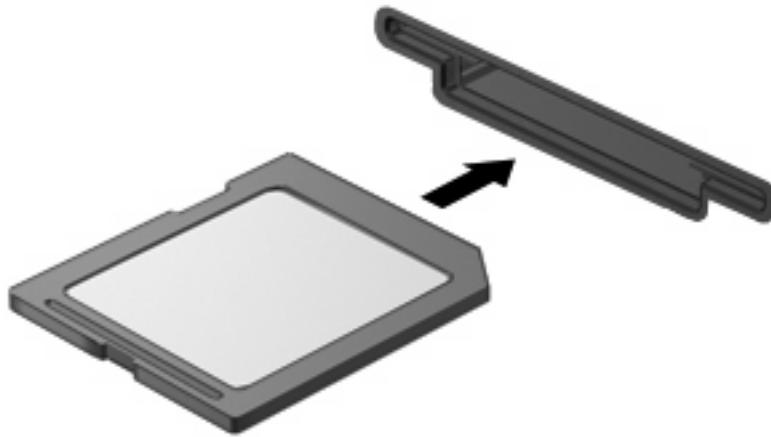
## Inserting a digital card



**CAUTION:** To avoid damaging the digital card or the computer, do not insert any type of adapter into the Digital Media Slot.

**CAUTION:** To prevent damage to the digital card connectors, use minimal force to insert a digital card.

1. Hold the digital card label-side up, with the connectors facing the computer.
2. Gently slide the card into the Digital Media slot until the card is seated.



You will hear a sound when the device has been detected, and a menu of available options may be displayed.



# Stopping and removing a digital card



**CAUTION:** To prevent loss of data or an unresponsive system, stop a digital card before removing it.

1. Save your information and close all programs associated with the digital card.



**NOTE:** To stop a data transfer, click **Cancel** in the operating system Copying window.

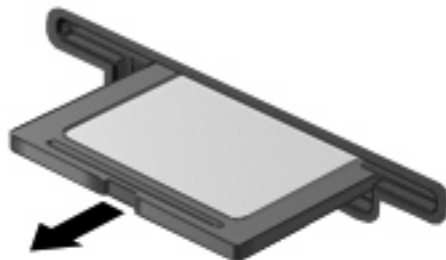
2. Stop the digital card:

- a. Double-click the **Safely Remove Hardware** icon in the notification area, at the far right of the taskbar.



**NOTE:** To display the Safely Remove Hardware icon, click the **Show Hidden Icons** icon (< or <<) in the notification area.

- b. Click the name of the digital card in the list.
  - c. Click **Stop**, and then click **OK**.
3. Remove the digital card from the slot.



---

## 2 Using ExpressCards

An ExpressCard is a next-generation, high-performance PC Card that is inserted into the ExpressCard slot.

Like standard PC Cards, ExpressCards are designed to conform to the standard specifications of the Personal Computer Memory Card International Association (PCMCIA).

### Configuring an ExpressCard

Install only the software required for your device. If you are instructed by the ExpressCard manufacturer to install device drivers:

- Install only the device drivers for your operating system.
- Do not install other software, such as card services, socket services, or enablers, supplied by the ExpressCard manufacturer.

# Inserting an ExpressCard



**CAUTION:** To prevent damage to the computer and external media cards, do not insert a PC Card into an ExpressCard slot.

**CAUTION:** To prevent damage to the connectors:

Use minimal force when inserting an ExpressCard.

Do not move or transport the computer when an ExpressCard is in use.

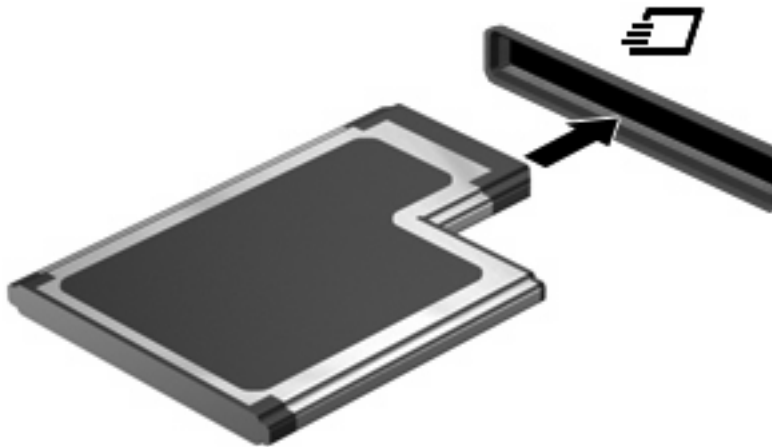
The ExpressCard slot may contain a protective insert. To remove the insert:

1. Press in on the insert **(1)** to unlock it.
2. Pull the insert out of the slot **(2)**.



To insert an ExpressCard:

1. Hold the card label-side up, with the connectors facing the computer.
2. Insert the card into the ExpressCard slot, and then push in on the card until it is firmly seated.



You will hear a sound when the device has been detected, and a menu of available options may be displayed.



**NOTE:** The first time you insert an ExpressCard, the "Installing device driver software" message is displayed in the notification area, at the far right of the taskbar.



---

**NOTE:** An inserted ExpressCard uses power even when idle. To conserve power, stop or remove an ExpressCard when it is not in use.

---

## Stopping and removing an ExpressCard

---



**CAUTION:** To prevent loss of data or an unresponsive system, stop an ExpressCard before removing it.

---

1. Save your information and close all programs associated with the ExpressCard.



**NOTE:** To stop a data transfer, click **Cancel** in the operating system Copying window.

---

2. Stop the ExpressCard:

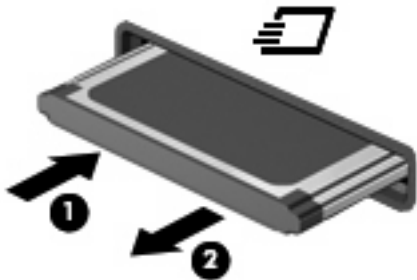
- a. Double-click the **Safely Remove Hardware** icon in the notification area, at the far right of the taskbar.



**NOTE:** To display the Safely Remove Hardware icon, click the **Show Hidden Icons** icon (< or <<) in the notification area.

---

- b. Click the name of the ExpressCard in the list.
  - c. Click **Stop**, and then click **OK**.
3. Release and remove the ExpressCard:
    - a. Gently press in on the ExpressCard **(1)** to unlock it.
    - b. Pull the ExpressCard out of the slot **(2)**.



---

# Index

## C

configuring ExpressCards 4

## D

digital card

defined 1

inserting 2

removing 3

stopping 3

## E

ExpressCard

configuring 4

defined 4

inserting 5

removing 6

removing insert 5

stopping 6

