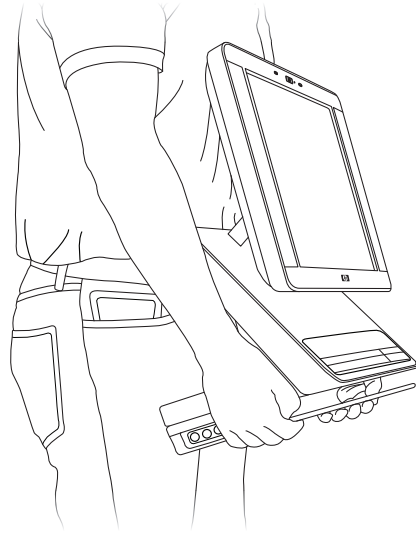


1 UNPACK CAREFULLY



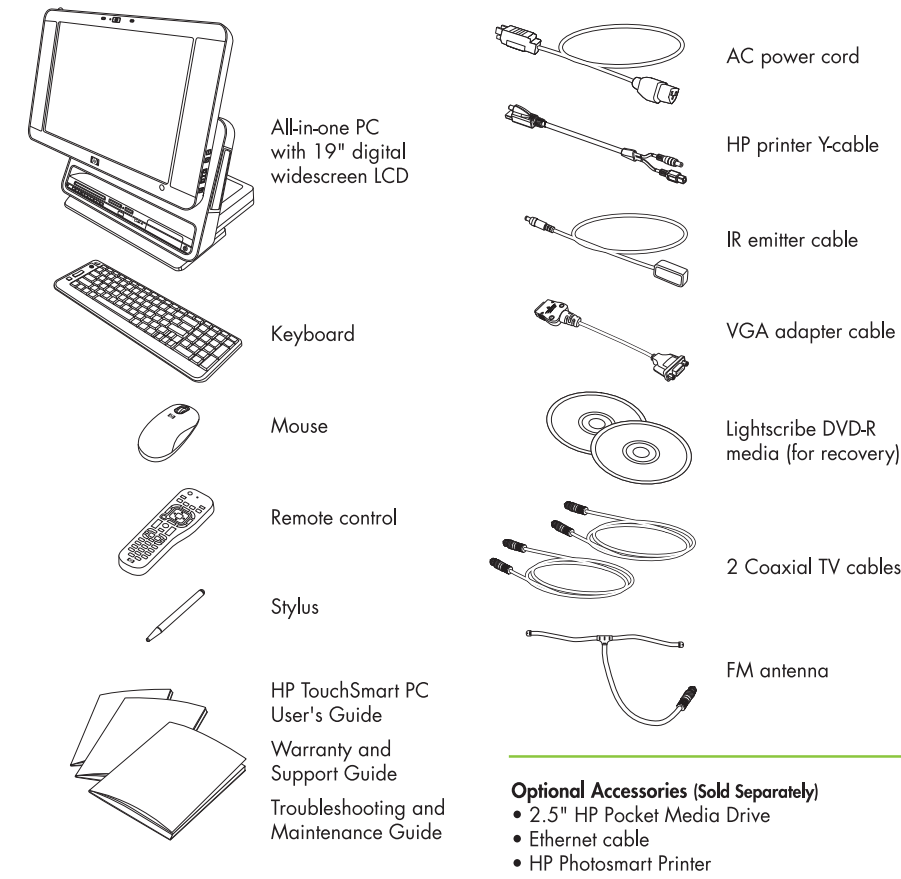
Getting Started

- Choose best location and prepare the space.
- Carefully follow these instructions for quick setup. See the *HP TouchSmart PC User's Guide* for advanced instructions.

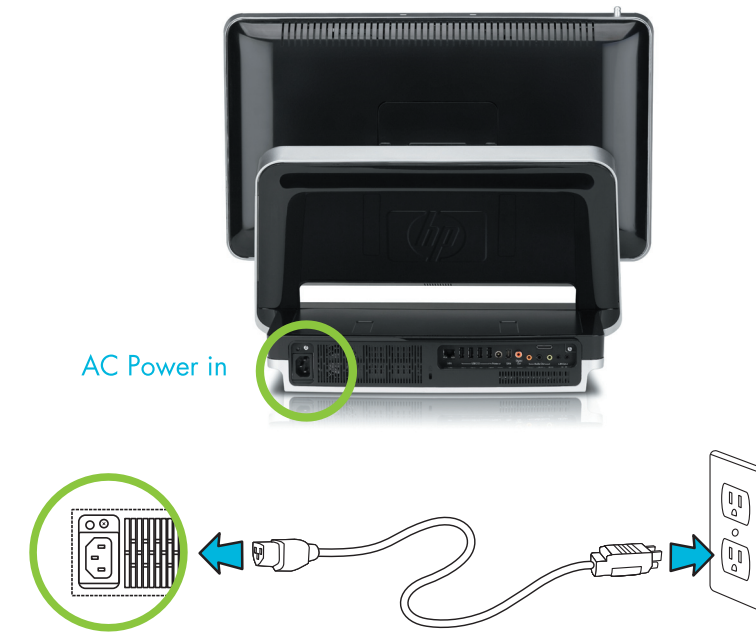
Unpack PC

- Safely remove your new PC by lifting from the base - not the hinge or monitor.
- Remove protective covering from all parts.

2 REVIEW CONTENTS



3 CONNECT POWER & ACTIVATE ACCESSORIES

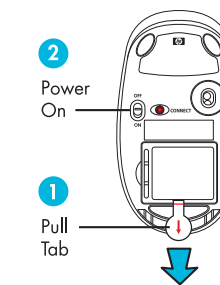


AC Power

Connect the AC power cord into the back of the PC as shown.



Mouse (back)

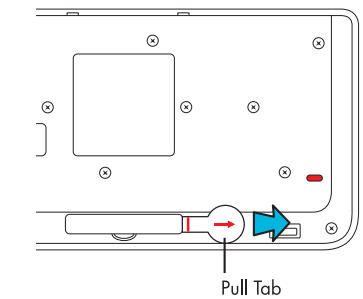


Mouse

Pull tab on back to activate batteries. Turn power to "On".



Keyboard (back)

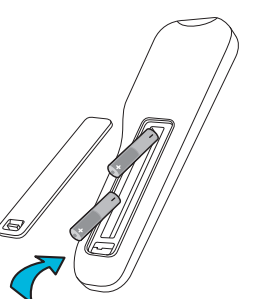


Keyboard

Pull tab on back to activate batteries. Do not push "On/Standby" button on front of keyboard until initial setup is complete or it will interrupt the setup procedure.



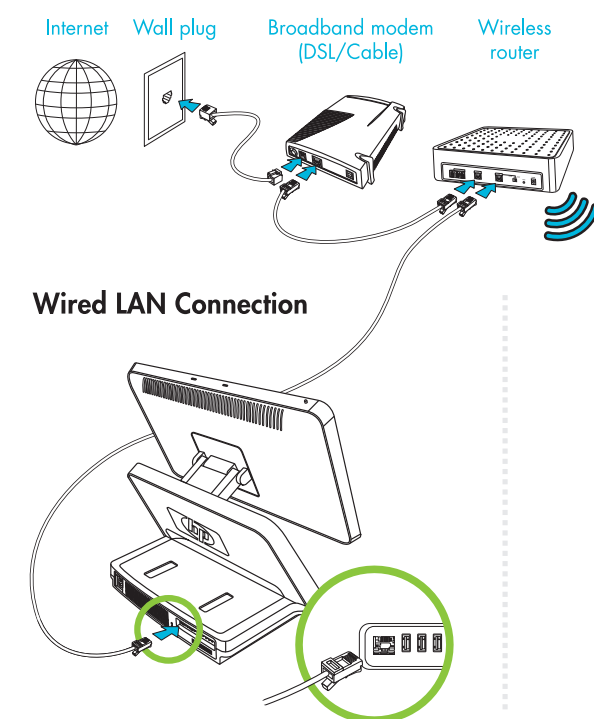
Remote (back)



Remote

Remove battery cover, install 2 AA batteries.

4 CONNECT TO INTERNET



Wired LAN Connection

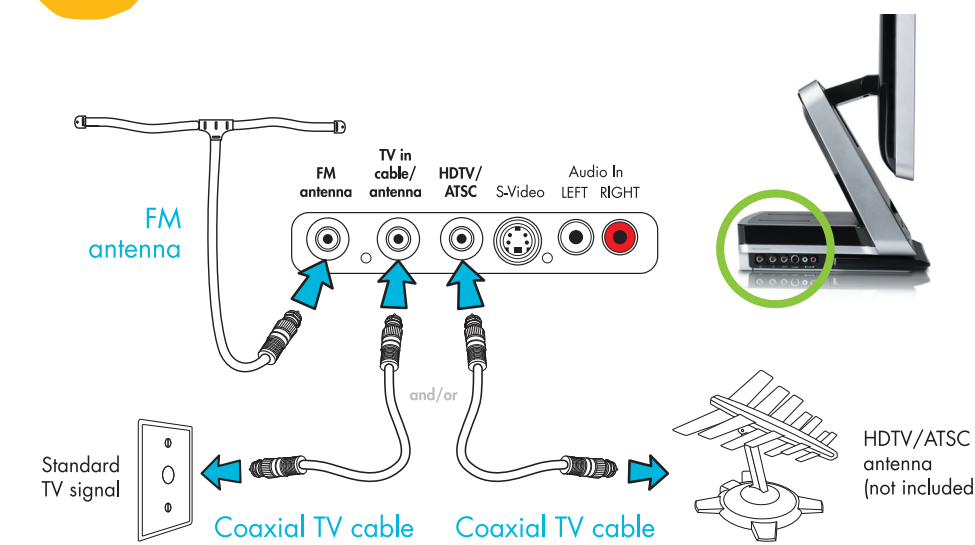


Wireless Connection

Bluetooth

For specific information about setting up your PC with additional Bluetooth devices, see the *HP TouchSmart PC User's Guide*.

5 OPTIONAL SETUP



FM Radio (optional)

For FM radio reception, connect the coaxial cable to the TV signal source and to the PC as shown.

Television - cable/antenna (optional)

For standard TV reception, connect the coaxial cable to the TV signal source and to the PC as shown.

HDTV/ATSC antenna

For over-the-air HDTV reception, connect the coaxial cable to the ATSC antenna source and to the PC as shown.

For information on connecting to set-top boxes or other advanced TV setup, see the *HP TouchSmart PC User's Guide*.



For HP Photosmart A510 or A610 series (sold separately)

Printer (optional)

Recommended printer (HP Photosmart A510 or A610 series – sold separately)
Open printer output tray. Place printer on the back shelf to save desk space. Connect the Y-cable to printer and PC.

Basic printer

Connect the power cord and USB cable to the printer. Plug the printer cord into a power source. Connect USB cable to back of computer and turn on printer.

6 POWER ON YOUR PC!



SET-UP:
20
MINUTES

Press "On/Standby" to begin setup.

Important

Do not press any "On/Standby" or "Power" buttons again until the set-up is complete.

HP TouchSmart PC Initial Setup

Press the "On/Standby" button to start the initial (one-time) setup of the PC. This takes approximately 20 minutes. You can use this time to review additional setup instructions in the *HP TouchSmart PC User's Guide*, *Troubleshooting and Maintenance Guides*.

For additional detailed information after setup, you can go to the "Getting Started" guide located on your hard disk drive (click Start, then select Help & Support, then select "User's Guide").





HP TouchSmart PC Quick Reference Guide



- A - Touch enabled 19" diagonal widescreen LCD
- B - High-performance built-in 2.0 speakers
- C - Stylus
- D - Built-in Webcam & microphone array
- E - HP Pocket Media Drive bay
- F - Channel, Volume, and Mute Controls
- G - HP SmartCenter Button
- H - On/Standby button
- I - Front Audio/Video inputs
- J - Activity indicator lights
- K - Remote Control IR sensor window
- L - Media card reader
- M - Media Control buttons
- N - Headphone Jack
- O - Slot-load SuperMulti DVD burner with LightScribe

