



HP Webcam User's Guide

Version 2.0

Copyright © 2006–2007 Hewlett-Packard Development Company, L.P.

The information contained herein is subject to change without notice.

The only warranties for HP products and services are set forth in the express warranty statements accompanying such products and services. Nothing herein should be construed as constituting an additional warranty. HP shall not be liable for technical or editorial errors or omissions contained herein.

Product Registration

Registration is quick, easy and offers: e-mail updates containing notifications about product enhancements, the most recent support alerts, and driver updates specific to the product(s) you own.

For faster help, be sure to register your recently purchased product at
<https://register.hp.com>

Table of Contents

Welcome	1
Overview	1
Using Your HP Webcam	3
Recording a Video.....	3
Starting a Video Conference.....	4
Taking a Picture	4
Adjusting Webcam Settings.....	5
Adjusting the Focus.....	5
Using Face-Tracking.....	5
Adjusting Video Stream Settings	6
Adjusting General Settings	6
Adjusting Image Settings	7
For HP VGA Webcam for Notebook PCs.....	7
For HP 1.3-Megapixel Webcam for Notebook PCs.....	8
Adjusting Advanced Settings.....	9
Troubleshooting	11

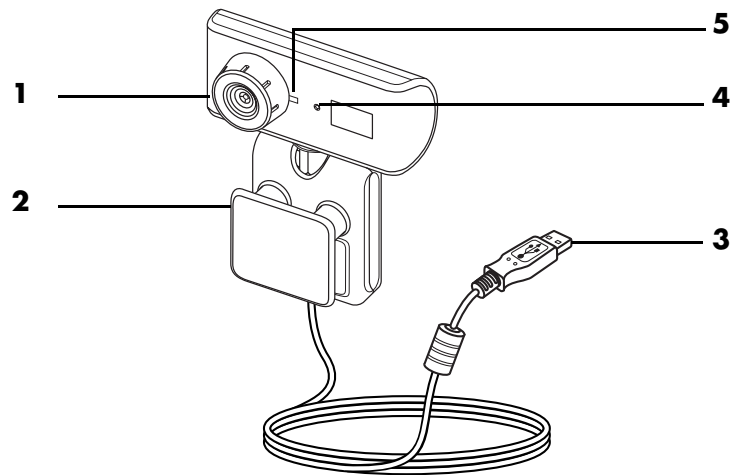
Welcome

Congratulations on purchasing one of the following products:

- HP VGA Webcam for Notebook PCs
- HP 1.3-Megapixel Webcam for Notebook PCs

This guide shows you how to use your new webcam to record videos, hold video conferences, take pictures, and adjust the webcam settings.




Overview



- 1 Focus ring
- 2 Adjustable clip
- 3 USB connector
- 4 Integrated microphone
- 5 LED

Using Your HP Webcam

Recording a Video

- 1 Double-click the **ArcSoft VideoImpression**  icon on the Windows desktop.
- 2 Click **Create a New Video**.
- 3 Click **Capture From Device**.
- 4 Make sure **Live** is selected and **Video** is checked.
- 5 Click the  **Record** icon to begin recording the video.
- 6 Click the  **Stop** icon to stop recording the video.

If you want to edit your video and send it by e-mail, Arcsoft VideoImpression can do all that and more. To learn more about using ArcSoft VideoImpression, click the **Help** menu.



Starting a Video Conference


You can add live video to the most popular instant messaging (IM) applications (ISP connection required):

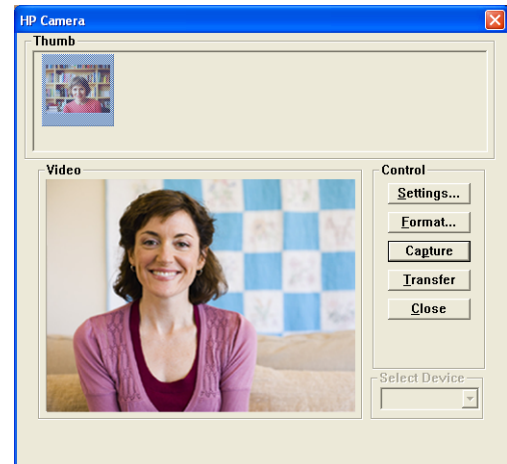
- Windows Live™ Messenger
- AOL® Instant Messenger™ (AIM®)
- Yahoo!® Messenger
- Skype®

NOTE: HP recommends using VGA resolution or lower to optimize your video conferencing experience. Video performance varies depending on your PC performance and Internet bandwidth.

- 1 Open the instant messaging application.
- 2 Sign in.
- 3 Follow the video conferencing steps in your IM application's documentation.

Taking a Picture

- 1 Double-click the **HP Photosmart Essential**  icon on the Windows desktop.
- 2 Select **View>Get Images>From Scanner**. The Select Device dialog box appears.
- 3 Select **HP Camera** and then click **OK**.
- 4 A warning appears to indicate that the device isn't a scanner. Click **Yes**.
- 5 Click **Capture** to take a picture (snapshot).
- 6 Click **Transfer** to save the picture in the My Documents/My Scans/<Current Month> folder.



Now you are ready to edit and share your photos with HP Photosmart Essential. To learn more about using HP Photosmart Essential, click the **Help** menu.

Adjusting Webcam Settings

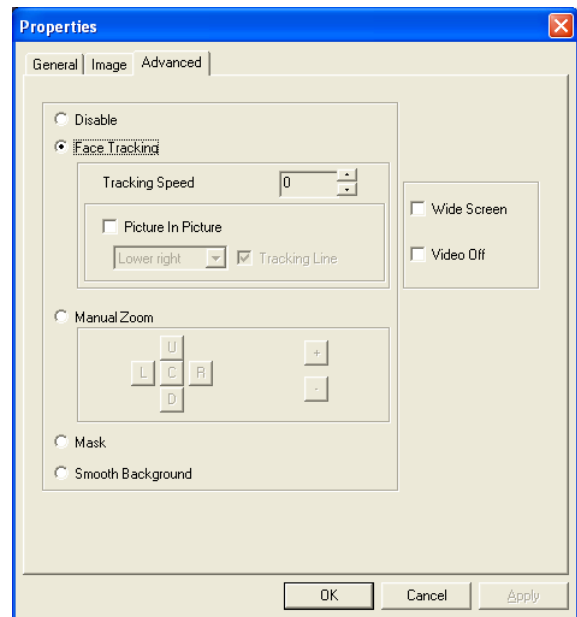
You can use the hardware and software controls to adjust your webcam's settings.

Adjusting the Focus

Rotate the focus ring on the outside of the webcam lens until the image on the screen comes into focus.

Using Face-Tracking

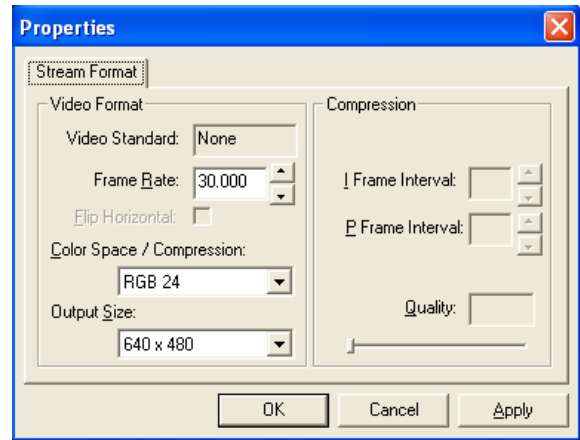
- 1 In ArcSoft VideoImpression or HP Photosmart Essential, click **Settings**.
- 2 Click the **Advanced** tab.
- 3 Face the webcam for a few seconds so that the software can recognize your facial features.
- 4 Click **Face Tracking**.
- 5 (Optional) Adjust the **Tracking Speed**.
- 6 (Optional) Select the **Picture in Picture** check box to turn on this feature. Select a location for the picture, and if you want to view the focal point of the tracking feature, select the **Tracking Line** check box.
- 7 Click **OK**.



Adjusting Video Stream Settings

- 1 In ArcSoft Videolmpression or HP Photosmart Essential, click **Format**.
- 2 Click **Frame Rate** to adjust the number of frames per second.
- 3 Click **Color Space/Compression** to adjust the number of colors. The file size decreases when you select fewer colors.
- 4 Click **Output Size** to adjust the size of the image.
- 5 Click **OK**.

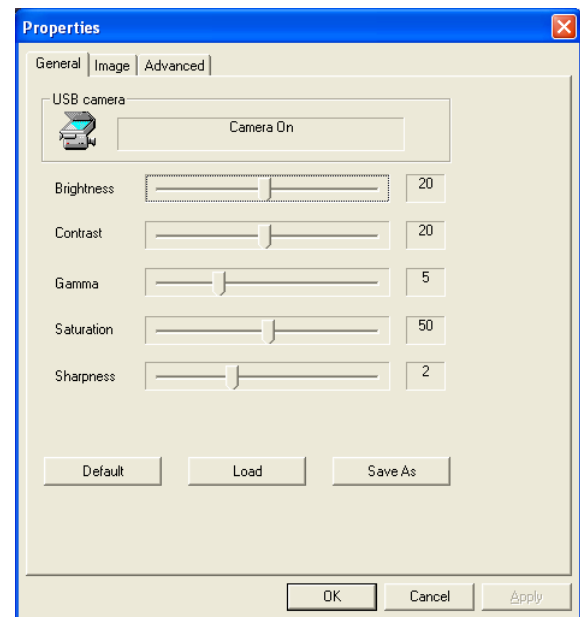
NOTE: If the Output Size is larger than 640x480, you cannot adjust the Advanced settings in the Settings dialog box.



Adjusting General Settings

- 1 In ArcSoft Videolmpression or HP Photosmart Essential, click **Settings**.
- 2 Click the **General** tab.
- 3 Drag the sliders to adjust the Brightness, Contrast, Gamma, Saturation, or Sharpness levels.
- 4 (Optional) Click **Save As** to store your settings and assign them a name, so you can use them again later.
- 5 Click **OK**.

NOTE: To use previously saved settings, select **Load** and then select the name you assigned to the settings. To restore the factory settings, select **Default**.

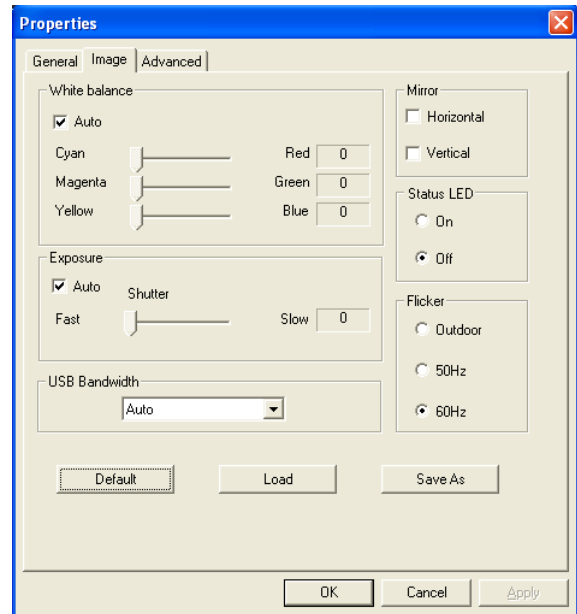


Adjusting Image Settings

The Image settings options vary slightly based on your webcam model. The sections that follow describe the Image settings for each webcam model.

For HP VGA Webcam for Notebook PCs

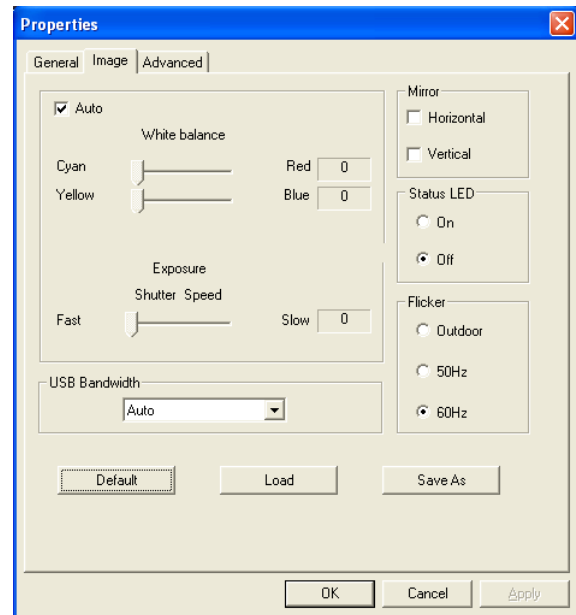
- 1 In ArcSoft VideoImpression or HP Photosmart Essential, click **Settings**.
- 2 Click the **Image** tab.
- 3 Under White balance, select the **Auto** check box to let the software automatically detect color levels, or uncheck the box and drag the sliders to manually adjust the color levels.
- 4 Under Exposure, select the **Auto** check box to let the software automatically detect the optimum shutter speed, or uncheck the box and drag the slider to manually adjust the speed.
- 5 Under USB Bandwidth, select **Auto** to let the software automatically detect the optimum speed. If you need to share USB resources between accessories, select a specific speed limit for the webcam resources.
- 6 Under Mirror, indicate whether you want to rotate the image by checking the **Horizontal** and **Vertical** boxes.
- 7 Under Status LED, select **On** to turn on the webcam LED, or select **Off** to turn it off.
- 8 Under Flicker, select **Outdoor** if you're outside or using all natural lighting. Select **50Hz** if you're outside North America, or select **60Hz** if you're inside North America.
- 9 (Optional) Click **Save As** to store your settings and assign them a name, so you can use them again later.
- 10 Click **OK**.



NOTE: To use previously saved settings, select **Load** and then select the name you assigned to the settings. To restore the factory settings, select **Default**.

For HP 1.3-Megapixel Webcam for Notebook PCs

- 1 In ArcSoft VideoImpression or HP Photosmart Essential, click **Settings**.
- 2 Click the **Image** tab.
- 3 Select the **Auto** check box to let the software automatically detect color levels and the optimum shutter speed, or uncheck the box and drag the sliders to manually adjust the color levels and shutter speed.
- 4 Under USB Bandwidth, select **Auto** to let the software automatically detect the optimum speed. If you need to share USB resources between accessories, select a specific speed limit for the webcam resources.
- 5 Under Mirror, indicate whether you want to rotate the image by checking the **Horizontal** and **Vertical** boxes.
- 6 Under Status LED, select **On** to turn on the webcam LED, or select **Off** to turn it off.
- 7 Under Flicker, select **Outdoor** if you're outside or using all natural lighting. Select **50Hz** if you're outside North America, or select **60Hz** if you're inside North America.
- 8 (Optional) Click **Save As** to store your settings and assign them a name, so you can use them again later.
- 9 Click **OK**.

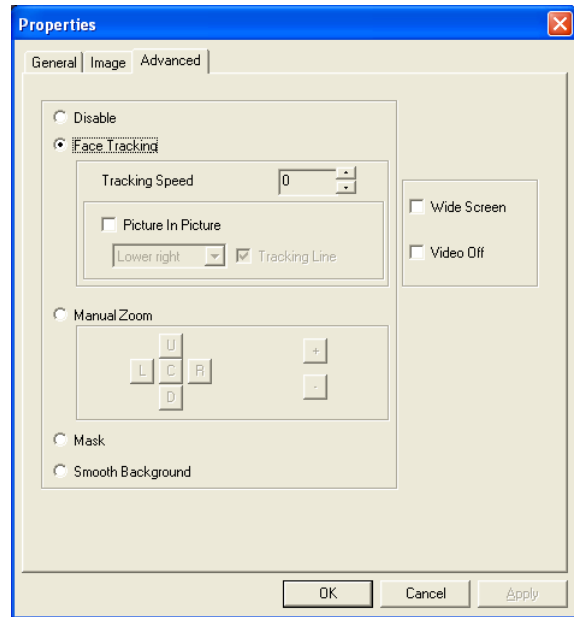


Adjusting Advanced Settings

- 1 In ArcSoft VideImpression or HP Photosmart Essential, click **Settings**.
- 2 Click the **Advanced** tab.

NOTE: If you can't adjust the settings on the Advanced tab, you need to lower the Output Size setting. See [Adjusting Video Stream Settings](#) for details.

- 3 Select one of the following settings:
 - **Disable** turns off Face Tracking, Manual Zoom, Mask, and Smooth Background.
 - **Face Tracking** sets the camera to follow your face as you move. See [Using Face-Tracking](#) for more information.
 - **Manual Zoom** enables you to control zoom levels and directions.
 - **Mask** hides the face in the center of the image.
 - **Smooth Background** softens edges in the background behind the central face.
- 4 (Optional) Select the **Wide Screen** check box to add a dark border above and below the image.
- 5 (Optional) Select the **Video Off** check box to turn off the video signal. The screen goes dark when this box is selected.
- 6 Click **OK**.



Troubleshooting

Problem	Solution
The image is fuzzy	Rotate the focus ring to bring the image into focus.
I can't take a picture	You must open the HP Photosmart Essential application and select the From Scanner option before taking a picture. See Taking a Picture for details.
Face-tracking is too slow or too fast	Adjust the Tracking Speed setting on the Advanced tab in the Properties dialog box. See Using Face-Tracking for details.
There are lines interfering with the image	Select a different Flicker setting on the Image tab in the Properties dialog box. See Adjusting Image Settings for details.
The Advanced settings tab disappeared	Decrease the Output Size setting on the Stream Format tab in the Properties dialog box. The Advanced settings tab is not available when the Output Size is larger than 640x480. See Adjusting Video Stream Settings for details.
I can't access the settings on the Image tab	Decrease the Output Size setting on the Stream Format tab in the Properties dialog box. The options on the Image settings tab are not available when the Output Size is set to 1600x1200. See Adjusting Video Stream Settings for details.

Still need help? Please refer to the warranty that came with your webcam for support phone numbers and Web site information.

DECLARATION OF CONFORMITY
according to ISO/IEC 17050-1 and EN 17050-1

Supplier's Name: Hewlett-Packard Company

Supplier's Address: Hewlett-Packard Company
10500 Ridgeview Court
Cupertino, CA. 95014

declares, that the product(s):

Product: Web Camera (HP VGA Webcam for Notebook PCs);
Web Camera (HP 1.3-Megapixel Webcam for Notebook PCs)

Model Number(s): RD346AA#XXX, SCA0346
RD345AA#XXX, SCA0345

conforms to the following Product Specifications:

EMC: CISPR 22: 1997 / EN 55022: 1998 +A1:2000 +A2:2003, Class B
CISPR 24: 1997 / EN 55024:+1998 +A1:2001 +A2:2003
IEC 61000-3-2:2000 / EN 61000-3-2: 2000
IEC 61000-3-3:1994 + A1: 2001 / EN 61000-3-3: 1995 + A1: 2001
GB9254: 1998
FCC Title 47 CFR, Part 15 Class B / ICES-002, issue 2
AS/NZS CISPR 22: 2002

Supplementary Information:

The product herewith complies with the requirements of the Low Voltage Directive 73/23/EEC, the EMC Directive 89/336/EEC and the R&TTE Directive 1999/5/EC and carries the "CE Marking" accordingly.

This device complies with Part 15 of FCC rules. Operation is subject to the following two conditions: (1) this device may not cause harmful interference, and (2) this device must accept any interference received, including interference that may cause undesired operation.

Cupertino, CA USA July 7, 2006

For regulatory compliance information only, contact:

Australia Contact: Product Regulations Manager, Hewlett-Packard Australia Pty Ltd., 31-41 Joseph Street, Blackburn, Victoria 3130

European Contact: Hewlett-Packard GmbH, HQ-TRE, Herrenberger Straße 140, 71034 Böblingen, Germany (FAX: +49-7031-14-3143)

North America Contact: Hardware Quality Eng. Manager, Hewlett-Packard, CPC, 10500 Ridgeview Ct., Cupertino, CA 95015-4010.

Phone: (408)-343-5000

Part number: 5991-7028