

SATA device configuration guidelines

HP xw8x00 and xw9x00 Workstations

This document describes how to configure SATA devices in HP xw8x00 and xw9x00 Workstations.

 **NOTE:** SATA ports on the workstation are not hot swappable.

1. Begin connecting the SATA mass storage device cables to the workstation SATA ports, typically starting with SATA port 0. The port 0 connector is identified by a unique color.


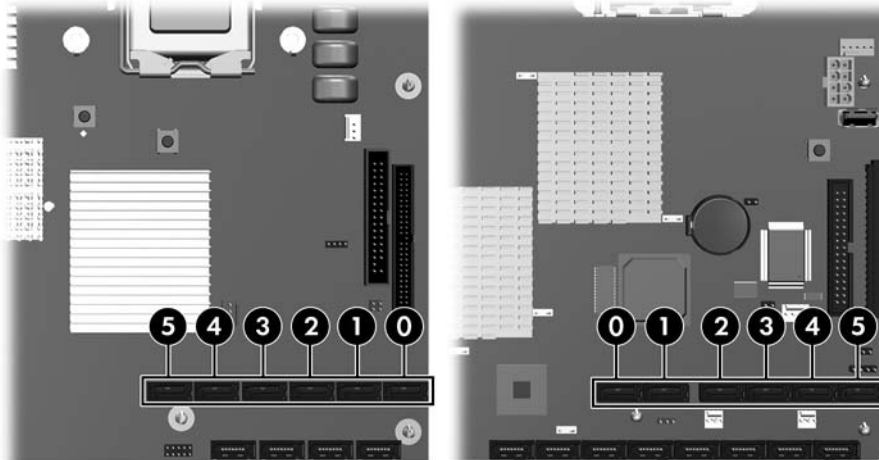

 **NOTE:** Refer to the service label on the inside of the workstation access panel for SATA and SAS port details.


Figure 1 SATA ports



Example: HP xw8400 Workstation SATA ports *Example: HP xw9400 Workstation SATA ports*

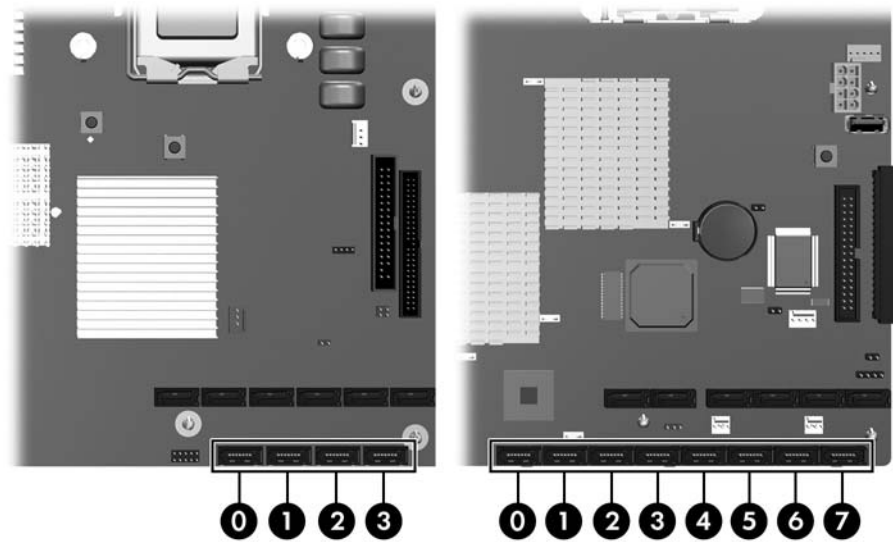
2. Continue connecting the mass storage devices to unused SATA ports.

 **TIP:** Connect the hard drives first. When all hard drives are connected, begin connecting the optical devices.

 **NOTE:** All internal bay SATA hard drives are supported only on the system board SATA ports. An external SATA hard drive is supported on either an eSATA or a SAS controller card port.

3. If more ports are required, begin connecting the mass storage device cables to the SAS ports, typically starting with SAS port 0.

Figure 2 SAS ports



Example: HP xw8400 Workstation SAS ports *Example: HP xw9400 Workstation SAS ports*

4. Continue connecting mass storage devices to the available SAS ports.

When the configuration is complete:

- The internal hard drives are connected first, then the optical drives.
- Mass storage device connections begin on SATA ports (starting at port 0), then continue through the SAS ports (starting at port 0).