

Administrator's Guide

Linux-based HP Compaq t5735 Thin Client



© Copyright 2008 Hewlett-Packard Development Company, L.P. The information contained herein is subject to change without notice.

Microsoft and Windows are trademarks of Microsoft Corporation in the U.S. and other countries.

The only warranties for HP products and services are set forth in the express warranty statements accompanying such products and services. Nothing herein should be construed as constituting an additional warranty. HP shall not be liable for technical or editorial errors or omissions contained herein.

This document contains proprietary information that is protected by copyright. No part of this document may be photocopied, reproduced, or translated to another language without the prior written consent of Hewlett-Packard Company.

Administrator's Guide

Linux-based HP Compaq t5735 Thin Client

First Edition (January 2008)

Document Part Number: 480953–001

About This Book

- ⚠ **WARNING!** Text set off in this manner indicates that failure to follow directions could result in bodily harm or loss of life.
 - ⚠ **CAUTION:** Text set off in this manner indicates that failure to follow directions could result in damage to equipment or loss of information.
 - 📝 **NOTE:** Text set off in this manner provides important supplemental information.
-

Table of contents

1 Introduction

Thin client image	1
Desktop options	2
Taskbar and menus	3
Applications menu	3
Applications submenus	3
Places menu	5
Desktop menu	6
Desktop submenus	7
Synaptic	9
TeemTalk	11
Connection types	12
System information	12

2 Preference Settings

Date/Time	14
Configuring the system hardware clock from BIOS	15
Desktop background	16
Desktop Wallpaper	16
Desktop Colors	17
Keyboard	18
Mouse	18
Network Manager	19
Interfaces	19
General	20
DNS	20
Printers	22
Parallel printer	22
USB printer	23
Network printer	24
Samba printer	25
Print jobs	26
Sound — GNOME ALSA Mixer	26
Login Window	26
HP ThinState utility	28
FTP Update	33

3 HP Connection Administrator

HP Connection Administrator window	35
--	----

Connection types	36
Adding, editing, and deleting connections	36
Citrix ICA	37
Iceweasel connection	39
rdesktop connection	40
XDM connection	44
Other	45
Advanced Configuration utility	46
Configuring available connections	47
Configuring user connections	47
Assigning connections to users	49
Configuring connections as primary, secondary, or to auto connect	49
GLOBAL UI (User Interface) in KIOSK Mode	51
Setting Citrix global settings	52
Server Location	52
Preferences	52
Hotkeys	53
Drive Mapping	53
COM ports	54

4 Citrix

Introduction	56
Citrix (ICA)	56
ICA Client Settings	57
Preferences	57
Connection View	57
Program Neighborhood Agent (PNAgent)	57

5 Support

Hardware warranty	58
Software warranty	58
Image updates and add-ons	58
Custom image requests	58
Availability of Linux Open Source code	59

6 Frequently Asked Questions

Linux operating system	60
System Administration	60
System Management	60
General	62
Manageability	63

7 Troubleshooting

Altiris	66
HP Connection Administrator	66
Citrix ICA	66
rdesktop	67
Iceweasel	67

XDM	68
Kiosk	68
Printing	68
ELO Touch Monitor	69
USB	69
Network	69
Keyboard	70
Multimedia	70
Miscellaneous	70

8 Useful information

Index	72
-------------	----

1 Introduction

△ **CAUTION:** Thin clients are designed for remote data storage and excessive writes to flash may damage the flash memory.

This guide provides the network administrator with instructions for configuration of the Linux-based thin client and explains the various configuration utilities.

📝 **NOTE:** Not all features described in this guide are available in all Linux-based terminal models.

Typically, to configure multiple terminals, you can configure a terminal locally and then use it as a template for other terminals, which you can then configure using remote administration tools.

📝 **NOTE:** A default administrator account is pre-installed with the following settings: **User name and Password = root**. Additionally, the HP t5735 ships with a basic user account with the **user name and password = user**. By default, the t5735 will autologin into the user account. HP recommends that you change the user and root passwords as soon as possible. See [Login Window on page 26](#) for more information on accessing the root account.

Thin client image

The HP t5735 Linux thin client offers an extensible Linux image built upon Debian GNU/Linux. HP has extensive Debian experience and selected Debian as the foundation for its thin client based on its stability, security, and market acceptance. Debian includes a package management system that ties into repositories maintained by the Debian community, HP, and others. Package is the generic term for all software, drivers, features, etc., that are “wrapped” in code that allows the software to be easier to automatically install into proper directories and check for any other dependences that are required to ensure they work properly once installed. Once created, packages reside in various repositories that are maintained by the Open Source Community for open source packages. HP hosts a unique repository for updates and features specifically for the HP t5735. Aptitude is a command-line and/or text-based GUI program for connecting to and managing packages locally and in a repository.

This image also comes with FTP update for installing new packages and settings files using an FTP server and ThinState capture. For more information about ThinState, see [HP ThinState utility on page 28](#).

You can use the Altiris client to provide remote management of the thin client and to upgrade the Linux image with feature enhancements, device drivers, and maintenance updates.

Desktop options

This section describes the Linux thin client desktop.



By default, at least three objects appear on the desktop:

- Computer icon—This icon gives you access to removable media such as USB flash drives, as well as to the entire filesystem (also known as the root filesystem). By default, you do not have the security permissions to read other users' files or to edit system files. It allows you to see a graphical representation of the files and folders on the system and to browse the various folders.
- User's Home icon—Your Home Folder is labeled *username's Home*; it's where all of your personal files are kept.
- Trash icon—Trash is a special folder in which to place files and folders you no longer need.

When you insert a flash drive or other removable media, a corresponding icon appears on the desktop and a window opens and displays any files and folders on the device.

As you work with your HP Compaq thin client, the desktop may become obscured by the windows you are working with. To reveal the desktop quickly, you can minimize all windows by doing one of the following:

- Click the **Show Desktop** button at the bottom left of the screen.
- Press **Ctrl+Alt+D**.

Either action will also restore your windows to their previous state. Alternatively, you can switch to another workspace to see the desktop.

The files and folders you put on the desktop are stored in a special folder within your Home Folder called Desktop. Like any other folder, you can put files and other folders directly into it.

Taskbar and menus

The default taskbar contains the following menus that provide quick function access:

- Applications menu
- Places menu
- Desktop menu

Applications menu

The Applications menu contains a hierarchy of submenus, from which you can start the applications that are installed on your thin client.

Each submenu corresponds to a category. For example, in the Internet submenu, you will find the HP Connection Administrator used for connecting to a server.

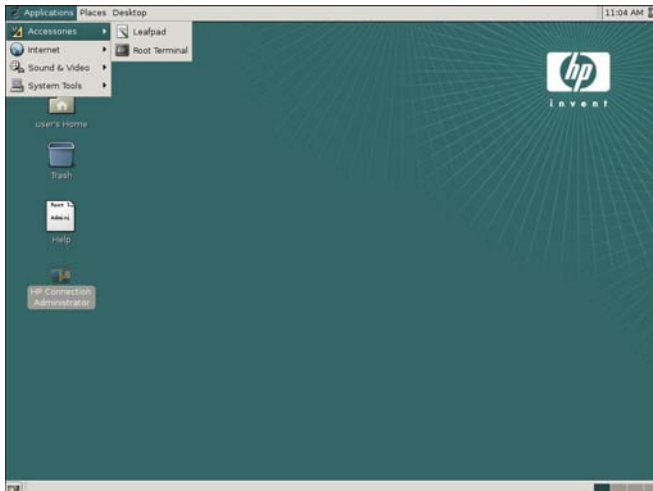
To launch an application,

1. Click **Applications**.
2. Move the cursor down the menu to the category of the application you want. Each submenu opens as your cursor passes over the category.
3. Click the menu item for the application.

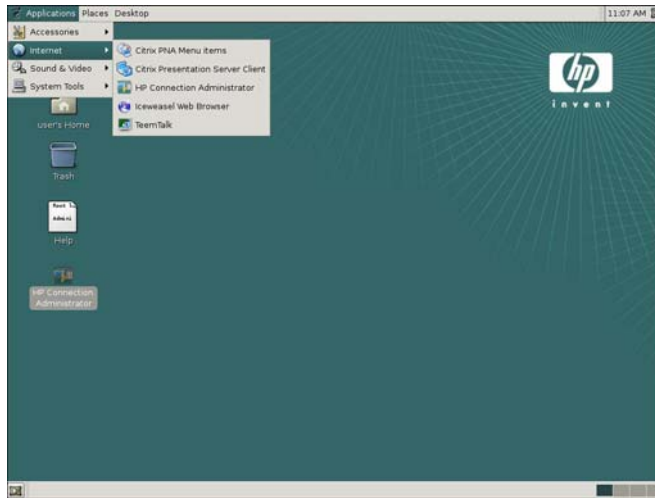
When you install a new application, it is automatically added to the Applications menu in a suitable category. For example, the Web browser can be found in the **Applications > Internet** submenu.

Applications submenus

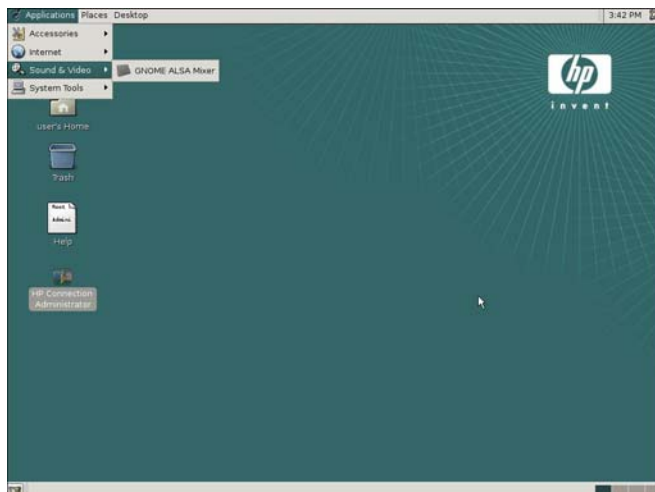
Submenus contain tools to manage and use your computer:



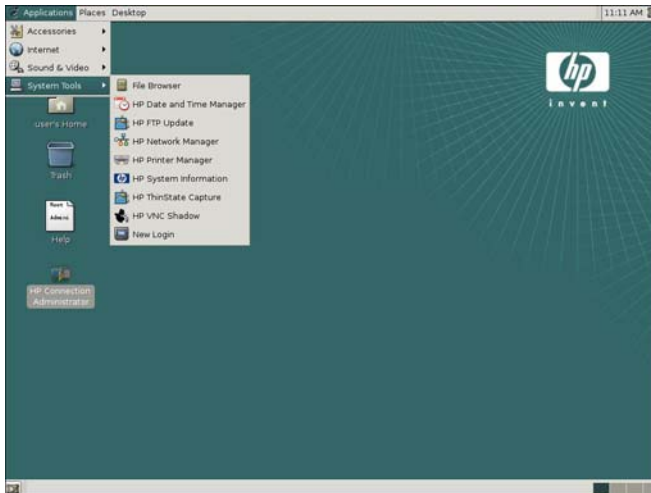
- **Root Terminal:** Opens a terminal as the root user, using GKSU to ask for the administrative password. It is useful to menu items or other graphical programs that need to ask a user's password to run another program as another user.



- **Citrix PNA Menu Items:** A file browser that allows you to view all Program Neighborhood Agent (PNAgent) items.
- **Citrix Presentation Server Client:** Allows you to add, delete, configure, or connect to a Citrix ICA server. Click **View** to select **Connection View** or **PNAgent View**, or click **Tools** to view or edit **Settings**, open the **Connection Center**, or open **Xcapture**.
- **HP Connection Administrator:** Allows administrative users to manage various types of connections, for example: ICA, RDP, XDM, and browser connections and allows all users to connect or disconnect a selected connection.
- **Iceweasel Web Browser:** Allows you to launch an Internet Web browser. Iceweasel is an open-source Web browser based on Mozilla Firefox that is designed for standards compliance, performance, and portability.
- **TeamTalk:** Allows you to use terminal emulation to connect and communicate with applications on mainframes and midrange systems including servers running proprietary OS's, UNIX and Linux systems.



- **GNOME ALSA Mixer:** An Advanced Linux Sound Architecture (ALSA) sound mixer for GNOME.



- **File Browser:** Allows you to graphically browse through files and folders on the thin client.
- **HP Date and Time Manager:** Allows you to adjust the thin client date and time, and to set the Timezone.
- **HP FTP Update:** Allows you to configure the thin client to check a specific ftp location for a newer image or package upon reboot.
- **HP Network Manager:** Allows you to configure connectivity between the thin client and the internet, a network, or a computer.
- **HP Printer Manager:** This utility allows you to add a new printer and modify printer settings.
- **HP System Information:** Allows you to view system information.
- **HP ThinState Capture:** Allows you to capture an HP thin client image that can then be deployed to another HP thin client of identical model and hardware.
- **HP VCN Shadow:** Allows you to control and configure the VNC Shadowing ability of the thin client.
- **New Login:** Allows you to log in as another user without logging out.

Places menu

The Places menu is a quick way to go to various locations on your computer and your local network.

The Places menu allows you to open the following items:

- **Home Folder**, where all of your personal files are kept.
- **Desktop** folder, which corresponds to the items displays in the desktop.
- **Computer**, which shows all your drives.
- **Network Servers**. If your system is configured to access places on a network, you can use the network file browser to access the network places.

The last two items on the menu perform actions rather than open locations:

- **Connect to Server**, lets you choose a server on your network.

To connect to a remote server, select the service type, and then type in the **Server** IP address. If required by your server, you may provide the following optional information and click **Connect**.

- Type in the **Port** to connect to on the server. This should only be used if it is necessary to change the default port; you would normally leave this blank.
 - Type the **Folder** to open upon connecting to server.
 - Type a **Name to use for connection**. The designation of the connection as it will appear in the file manager.
- **Recent Documents**, submenu lists the documents you have recently opened.

Click the last entry in the submenu, **Clear Recent Documents**, to clear the list.

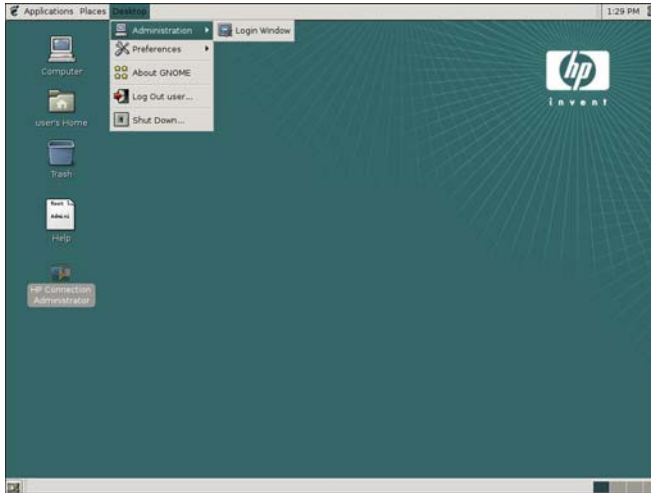
Desktop menu

The Desktop menu allows you to set preferences for your thin client.

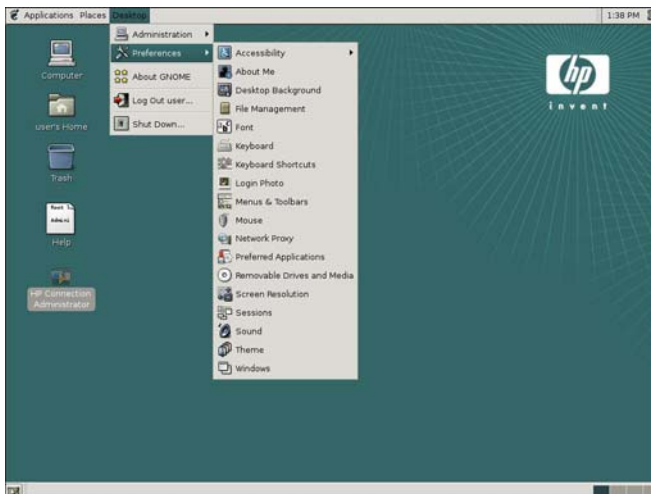
- **Administration** submenu contains tools to manage your computer. These all require your system's password. The GNOME-system-tools package can be installed to provide additional tools for performing advanced configuration.
- **Preferences** submenu contains all the preference tools. With these you can configure your GNOME Desktop. For more on preference tools, see Chapter 8, Configuring Your Desktop, in the *GNOME Desktop User Guide* at <http://library.gnome.org/users/user-guide/stable/>.
- **About GNOME** item has a brief introduction to GNOME, links to the GNOME Web site, and credits.
- **Log Out user** to log out user of the current session, or to log in as a different user. When you end a session, applications with unsaved work may not warn you so please save data and exit all programs first.
- **Shut Down** to end your session and turn off your thin client, or restart it.

Click to shut down your computer and switch off the power or log out for another user to log in. When you end a session, applications with unsaved work may not warn you, so please save data and exit all programs first.

Desktop submenus



- **Login Window:** Allows you to configure the login window.



- **Accessibility:** Allows you to enable support for assistive technologies at login and set your keyboard accessibility preferences. The Debian repository provides additional accessibility support in packages like GNOME-accessibility-themes.
- **About Me:** Allows you to set your personal information for use with the Evolution package, if installed.
- **Desktop Background:** Allows you to change the color of the desktop background or the image displayed there. You can also open **Desktop Background Preferences** by right-clicking on the desktop and choosing **Change Desktop Background**, as well as from the **Desktop > Preferences** menu.
- **File Management:** Allows you to customize the file manager to suit your requirements and preferences.
- **Font:** Use to select the fonts to use in your applications, windows, terminals, and desktop.
- **Keyboard:** Allows you to modify the autorepeat preferences for your keyboard, set your keyboard layout, and configure your keyboard options and typing break settings. You can also click **Layout**

Options > Accessibility button to set options such as filtering out accidental key presses, using the keyboard as a substitute for the mouse, and using shortcut keys without having to hold down several keys at once.

- **Keyboard Shortcuts:** Allows you to customize the default keyboard shortcuts to your requirements. Shortcut keys are keys that provide you with a quick way to perform a task.
- **Login Photo:** Enables you to change the picture that is displayed in your login screen. From the **Login Photo Preferences** window, select an image to display in your login screen.
- **Menus & Toolbars:** Allows you to customize the appearance of menus, menubars, and toolbars for applications.
- **Mouse:** Allows you to set the mouse preferences; buttons, pointers, and motion.
- **Network Proxy:** Enables you to configure how your system connects to the Internet. You can configure the thin client to connect to a proxy server, and specify the details of the proxy server.



NOTE: This setting is for GNOME applications only; other applications like Iceweasel and aptitude have their own proxy settings.

- **Preferred Applications:** Allows you to specify the applications that you want the thin client desktop to use when the thin client starts an application for you. For example, you can install a local mail client and specify it as your mail reader.
- **Removable Drives and Media Preferences:** Enables you to manage multimedia devices. For example, you can select settings for removable storage, blank CD and DVD disks, audio and video disks, etc.
- **Screen Resolution:** Allows you to specify the resolution and refresh rate settings for your screen.
- **Sessions:** Enables you to manage your sessions. You can also set session options and specify which applications to start when you start a session. This dialog can be used in conjunction with HP Connection Administrator and other applications to configure the client as a basic kiosk.
- **Sound:** Allows you to enable sounds. You can also specify which sounds to play when particular events occur if you install the GNOME-audio package or a set of sound files.
- **Theme:** Allows you to select from a list of available themes, install a new theme to the list, create a custom theme or delete a theme option. Additional themes can be installed with the GNOME-themes and GNOME-themes-extras packages, or you can install themes from sources like <http://www.gnome-themes.org> or create your own theme.
- **Windows:** Allows you to customize window behavior for the desktop.

Synaptic

This client software is organized into packages. **Synaptic** provides a graphical user interface to the package manager that allows you to easily add, upgrade, and remove packages on your thin client.


 **NOTE:** Synaptic Package Manager is only usable from the Root desktop

Most applications reuse the functionality of other applications or libraries; therefore, most packages depend on other packages. The Synaptic Package Manager resolves the dependencies automatically.

Synaptic provides the following features:

- Install, remove, configure, upgrade, and downgrade single and multiple packages
- Upgrade entire system (not recommended)
- Manage package repositories
- Search packages by name, description, and several other attributes
- Select packages by status, section, name, or a custom filter
- Sort packages by name, status, size, or version
- Browse all available online documentation related to a package
- Lock packages to the current version
- Force the installation of a specific package version

HP hosts a repository for t5735 options, add-on, and package updates at <ftp://ftp.hp.com/pub/tcdebian>.

 **NOTE:** To conserve flash space, Synaptic is not normally installed. The root user's desktop has an icon that when run will use aptitude to install Synaptic, which may be removed when no longer necessary. To access the root user's desktop, a user who knows the administrative password must check the **Allow local system administrator login** check box on the Security tab of the Login Window applet in the Desktop/Administration menu.

You must log in as root or a user in the Administrator group to use Synaptic. Click **Desktop > Log Out User > Log Out** to open the administrator login windows.

Reload package information regularly so you do not miss important security upgrades.

Synaptic requires an active network connection to work properly.

Synaptic requires that the thin client have Internet access.

If the HP Repository appears to be down or does not connect when trying to update the package list, wait and retry.

From time to time HP may release new or updated packages to the HP repository. HP packages have `hptc-` at the beginning of their name (i.e., `hptc-control-panel`); however, for the benefit of our customers, other vendors may also post packages in the HP repository (i.e., ICA updates, ThinPrint packages, etc.) that follow the vendor's naming convention and therefore do not begin with `hptc-`.

The first time you launch Synaptic, it decompresses itself and loads the list of all available packages from default ftp sites.

To launch Synaptic for the first time:


1. Click **Desktop > Administration > Login Window**, and click the **Security** tab.
2. Check the **Allow local system administrator login** check box.
3. Enter proxy information, if necessary (**Applications > System Tools > HP Network Manager**).
4. Log out and login again as `root`.
5. Select the **Synaptic** icon on the desktop.

An xterm window opens.

6. Type `Y`, and then press **Enter**.

The install results are displayed on-screen.

7. Read the installation results to confirm the packages successfully installed, and then close the window.


 **NOTE:** After running Synaptic for the first time, its icon changes.

Alternatively, you can open a root terminal and enter the command `aptitude update && aptitude install synaptic` after performing any necessary proxy configuration, as described above.


The Synaptic Package Manager window includes a pane (left) that allows you to list packages by category, a pane (upper right) that lists all packages within a selected category, and a pane (lower right) that provides information about a specific selected package.

For detailed information about a package, including size, version number, dependencies, files, and more, right-click the package and select the **Properties** button.

To install packages on the thin client:

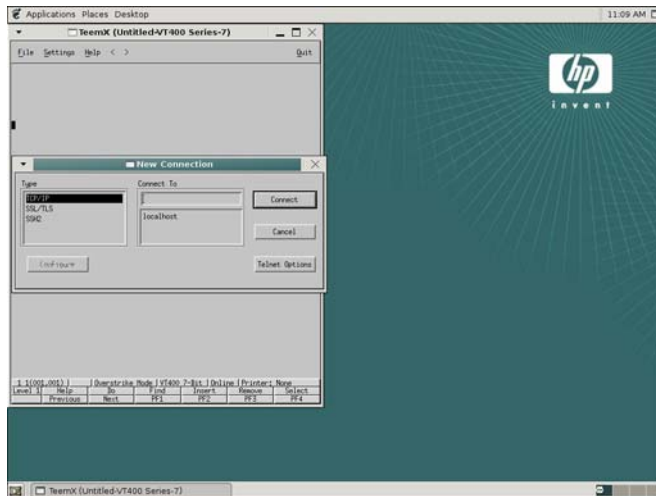
 **NOTE:** Be sure to read the installation messages, as they can require user input. Installing or removing packages requires administrator root permissions.

1. Open Synaptic Package Manager by double-clicking **Synaptic** on the desktop.
2. Click **Search** to open the **Find** dialog box.
3. Type a parameter of what you are searching for in the **Search** field, then select the search category in the **Look in** list, and then click **Search**. The upper right pane displays all packages located based on your search criteria.
4. In the upper right pane, select the specific package to install. If desired, read about the selected package in the lower right pane.
5. In the dialog box, select the installation option based on the type of installation you are performing.
6. If necessary, repeat steps 2 - 5 to location and mark more packages for installation.
7. Click **Apply**.
8. Confirm the action and click **Apply**.
9. Click **Close** after all packages are successfully installed.


 **NOTE:** When uninstalling packages, **Mark for Removal** uninstalls the package from the thin client without removing the configuration files. **Mark for Complete Removal** removes all traces of the package from the thin client.

For more information about Synaptic functions and features, go to the local Synaptic help file (launch the Iceweasel Web browser and go to <file:///usr/share/synaptic/html/index.html>).

TeemTalk

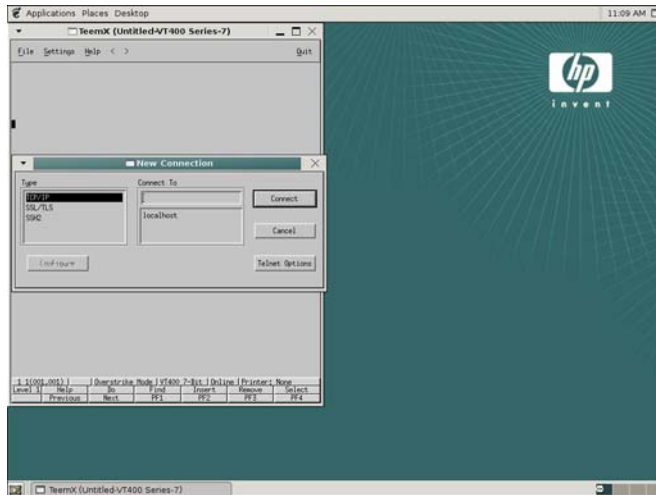


TeemTalk is the essential connectivity tool for enabling non-X based applications to be run in the X environment. TeemTalk provides precise emulation of a wide range of industry standard terminals with impressive additional features formulated to increase productivity and reduce network loading. These include dynamic window sizing, hotspots, soft buttons, keyboard mapping, mouse button definition and customizing capabilities. TeemTalk integrates seamlessly into the X Window system with the same look and feel as other applications.

 **NOTE:** The X Window System is a network-based windowing system that provides a common graphical interface for application programs. It defines how applications create windows and the graphics displayed in them.

The basic function of TeemTalk is to accept command sequences from a host application (client) and convert them into equivalent X functions, which can then be passed on to the X display server. This means that current investment in host application software can be retained in the X Windows environment.

Each window displayed by TeemTalk is, in effect, a separate 'terminal'. Several terminal emulation windows may be displayed simultaneously on the same display server, all running different programs.



For more information about TeemTalk, see the *TeemTalk 5.0 for Unix User Guide* at <http://h20000.www2.hp.com/bc/docs/support/SupportManual/c00782549/c00782549.pdf>.

Connection types

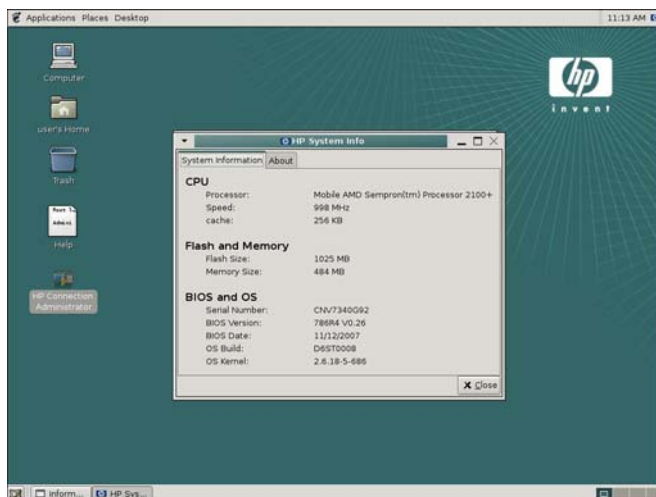
By default the t5735 comes ready to run use the following connection types:

- ICA
- rdesktop
- Iceweasel

Other connections may be available in the Debian repositories and in the Open Source Community and may be configured through Connection Administrator's Other connection type.

For more information about connections, see [HP Connection Administrator on page 35](#).

System information



To locate information about the system and operating system (for example, what version of the image is currently running), click **Applications > System Tools > HP System Information**.

The screen displays information about the CPU, flash, memory, BIOS, and operating system.


2 Preference Settings

This chapter provides an overview of using the preference tool to customize your desktop.

A preference tool allows you to change thin client desktop preferences. Each preference setting covers a particular aspect of your computer. For example, with the Screen Resolution preference tool, you can select the appropriate resolution for your monitor or change the refresh rate. With the Menu and Toolbar Preferences tool, you can select and view the behavior and appearance Icons and toolbars.

To open a preference tool, click **Desktop > Preferences**, and select the appropriate submenu item.

With a few exceptions, the changes you make to settings in a preference tool take effect immediately without needing to close the preference tool. You can keep the preference tool window open while you try the changes and make further changes, if you wish.

 **NOTE:** Some applications or system components may add their own preference tools to the menu. Some settings for your thin client require administrator access.

Date/Time



The HP Date and Time Manager utility allows you to set the date and time, select the appropriate time zone, and enable NTP (Network Time Protocol).

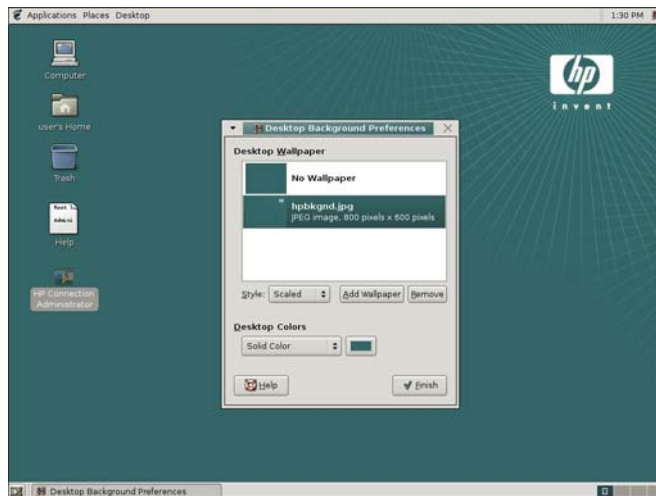
Click **Applications > System Tools > HP Date and Time Manager** to access this utility. Use the values in the **Date**, **Time**, and **Time Zone** areas to select the appropriate date and time information.

Configuring the system hardware clock from BIOS

You can set the system hardware clock to your local date and time using the BIOS setup utility as follows:

1. Reboot the system and press **F10**.
2. Select **Standard CMOS Features**, and then press **Enter**.
3. Set the date and time using the **Page Up** and **Page Down** keys or type the new numbers using the Num keys.
4. To save the changes, press **F10**, and then press **Enter**.

Desktop background



The desktop background is the image or background color that is applied to your desktop.

To access the Desktop Background Preferences:

- Right-click on the desktop, then click **Change Desktop Background**.

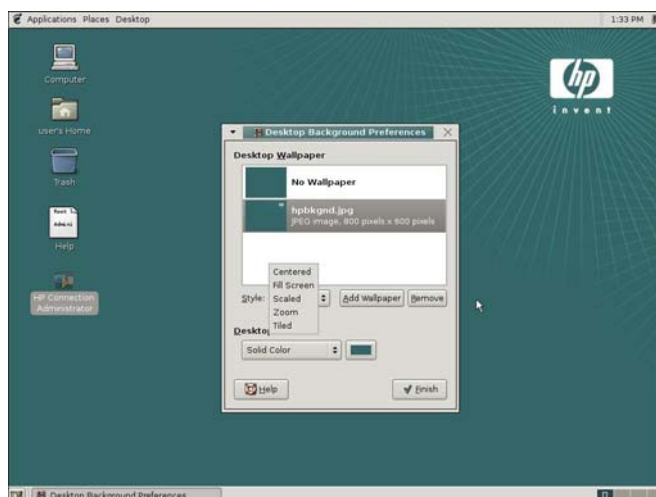
—or—

- Click **Desktop > Preferences > Desktop Background**.

You can customize the desktop background in the following ways:

- Select an image for the desktop background. The desktop background color is visible if you select a transparent image or if the image does not cover the entire desktop.
- Select a color for the desktop background. You can select a solid color or create a gradient effect with two colors. A gradient effect is a visual effect where one color blends gradually into another color.

Desktop Wallpaper



You can choose an image from a list, or select **Add Wallpaper** to choose any image on your thin client, including a USB drive.

To specify how the image is displayed, select one of the following options from the **Style** list:

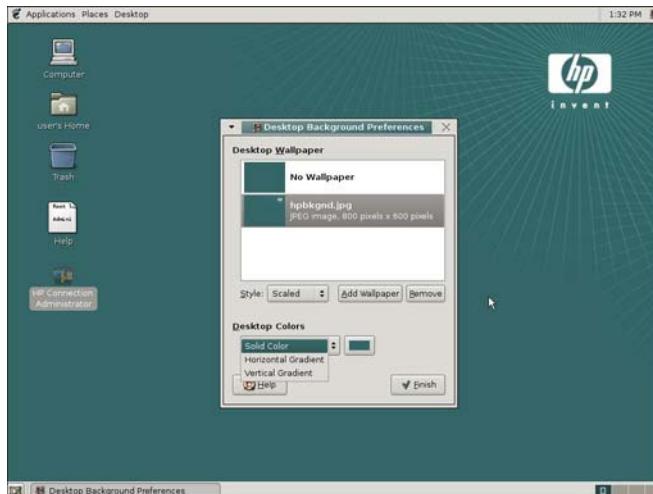
- **Centered**: Displays the image in the middle of the desktop.
- **Fill Screen**: Enlarges the image to cover the desktop and maintains the relative dimensions of the image.
- **Scaled**: Enlarges the image until the image meets the screen edges and maintains the relative dimensions of the image
- **Tiled**: Enlarges the image until the image meets the screen edges and maintains the relative dimensions of the image

To remove a desktop wallpaper image:

- Select the wallpaper that you want to remove, then click **Remove**.

This removes the image from the list of available wallpapers; however, it does not delete the image from your thin client.

Desktop Colors

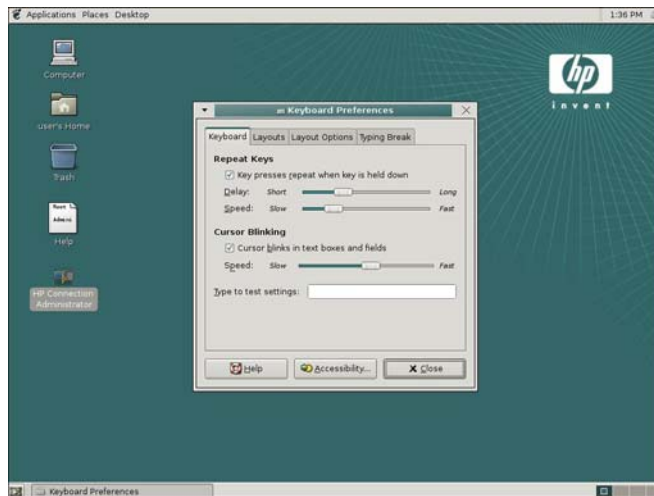


You can specify a color scheme by using the options in the Desktop Colors list, and by selecting color (s) using the color selector buttons.


To specify a color scheme:

- Use the options in the **Style** list and the color selector buttons. Choose **Solid Color**, **Horizontal Gradient**, or **Vertical Gradient**.

Keyboard



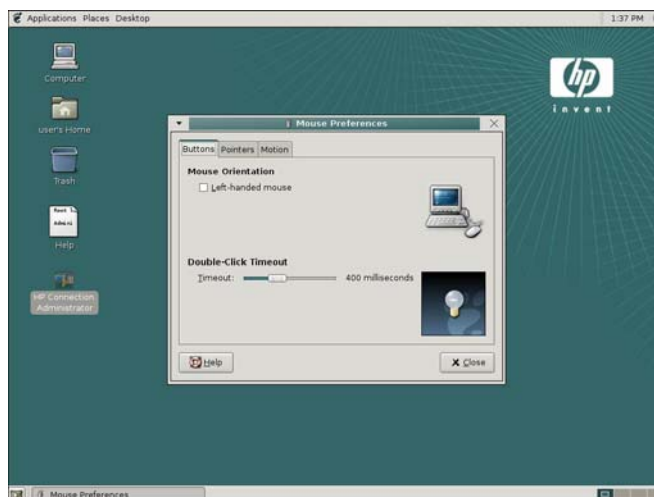
Use Keyboard Preferences to set key behavior, keyboard character repeat parameters, and the Numlock setting. To access this utility, click **Desktop > Preferences > Keyboard**.

 **NOTE:** Changes to the keyboard preferences apply locally. Remote settings are determined by the applications (rdesktop, Citrix, etc.) and server, but may be affected by local settings.

Drivers for the various languages do not transfer to the remote computer; therefore, you must also install the drivers for the selected language on the remote computer.

If you enable the Typing Break utility and stop using the keyboard and mouse for a length of time equal to the Break interval setting, the current work interval will be reset.

Mouse



Set Mouse Preferences to configure your mouse for right- or left-hand use, or to specify the speed and sensitivity of mouse movement. To access this utility, click **Desktop > Preferences > Mouse**.

On the Buttons tab, you can specify whether the mouse buttons are configured for right- or left-hand use. You can also specify the delay between clicks for a double-click.

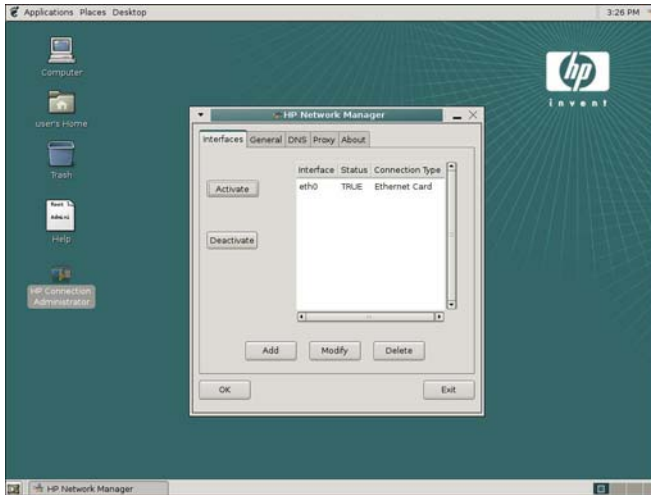
The Pointers tab allows you to set your mouse pointer preferences.

The Motion tab allows you to set your preferences for mouse movement.

Network Manager

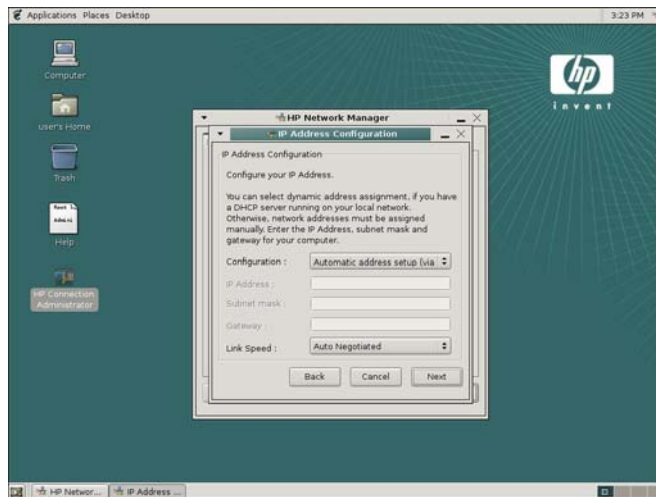
Use the Network Manager utility to configure connectivity between the terminal and the Internet, a network, or a computer. To access this utility, click **Applications > System Tools > HP Network Manager**.

Interfaces



On the Interfaces tab, you can add, modify, or remove network interfaces in `/etc/network/interfaces`. Select the interface, and then use the following buttons as necessary:

- **Activate:** Click to activate an inactive NIC if the unit has multiple Ethernet cards installed (for example, the down network card and an additional PCI NIC card).
- **Deactivate:** Click to deactivate a specific card if the unit has multiple Ethernet cards installed.
- **Add:** Click to walk through the options to set up a new NIC interface.
- **Modify:** Click to modify an existing interface. The IP Address Configuration window is displayed.

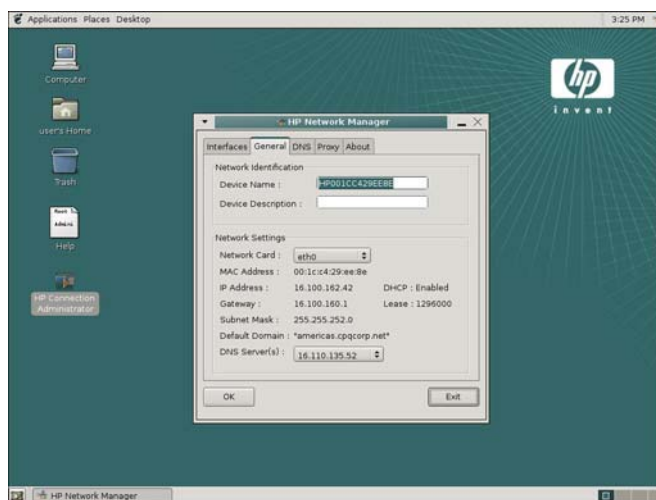


In this window, you can set the following options:

- **Configuration:** Select a configuration from the following options:
 - **Automatic address setup (via DHCP):** Enables DHCP and displays settings provided by IT or allows configuration.
 - **Static address setup:** Allows you to enter a specific IP address, Subnet Mask, and Gateway.
- **Link Speed:** Set a specific link speed. Auto Negotiated is the default.

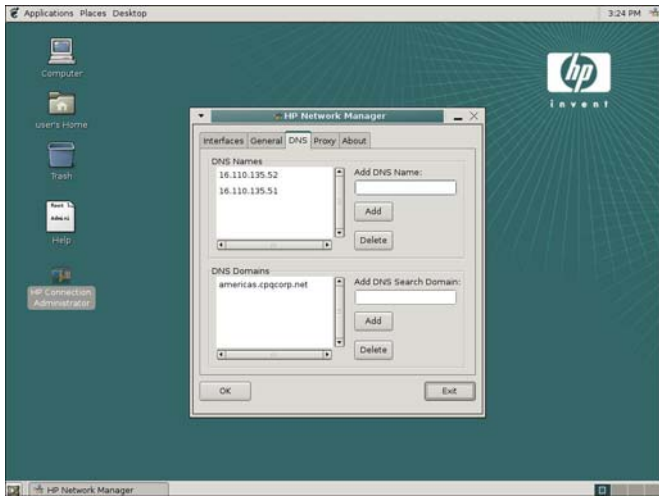
General

On the General tab, you can locate network identification information and current IP settings. Additionally, you can name the interface and provide a description, as well as select between provided DNS servers.

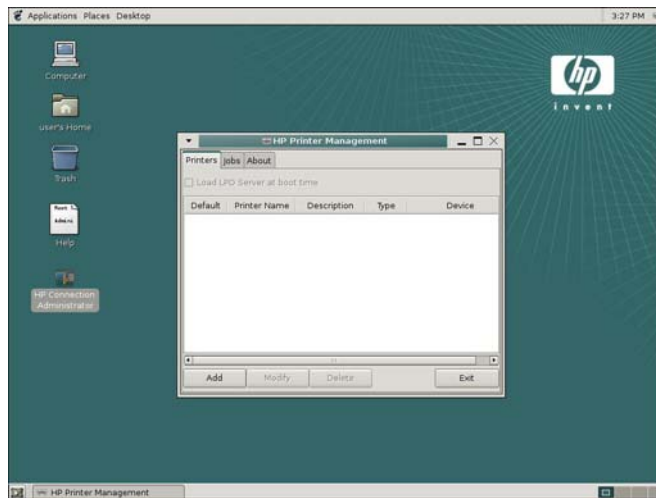


DNS


On the DNS tab, DNS names and domains are displayed and can be configured.



Printers




The Printer Management utility allows you to add a new printer and modify printer settings. Click **Applications > System Tools > HP Printer Manager** to access this utility.

 **NOTE:** To enable printing, you must install `lprng` using Synaptic.

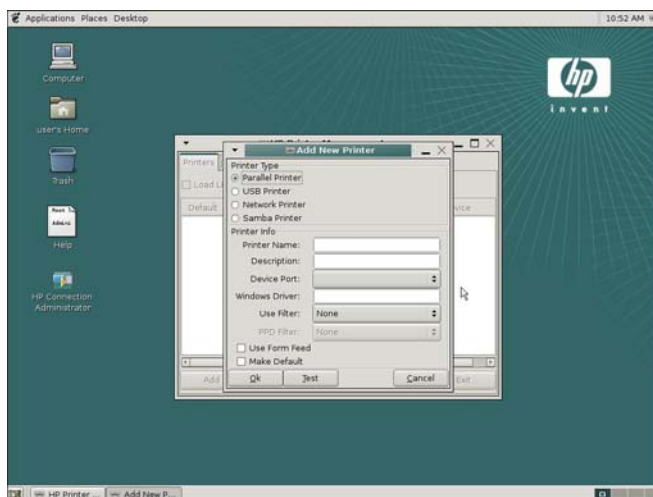
Text and postscript print formats are currently supported locally.

Parallel printer


1. Click the **Printers** tab.
2. Select **Load LPD Server at boot time**. If this check box is not available, `lprng` is not installed. You must install `lprng` to enable printing.

 **NOTE:** To install `lprng`, use the package management system (Synaptic or aptitude) and search for and install `lprng`. For more information about Synaptic, see [Synaptic on page 9](#).

3. Click **Add**.
4. Select **Parallel Printer**.




5. Type a **Printer Name** and **Description** (optional).
6. Use the value that defaults in the **Device Port** field. If the field is empty, there is no printer connected to the client.
7. If necessary, type a driver name in the **Windows driver** field. Citrix ICA and RDP use this field to set the printer driver for the session.

 **NOTE:** You must type the Windows driver name exactly as it is on the server.

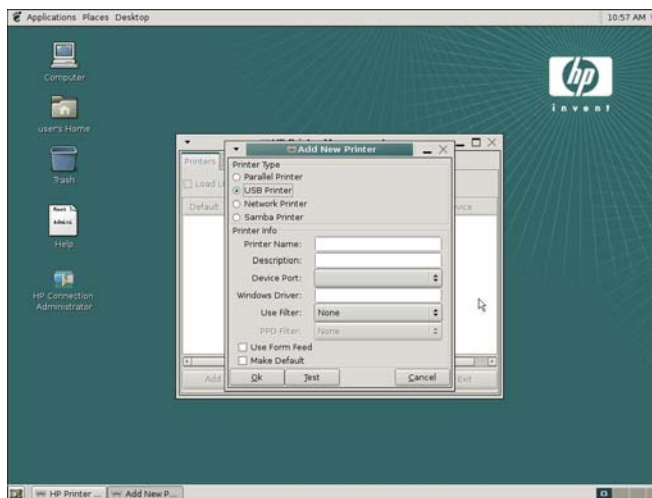
8. From the **Use Filter** list, select `/usr/lib/lprng/filter/lpf`. If **NONE** is displayed, lprng is not installed.
9. If you want to make this the default printer, select **Make Default**.
10. If desired, click **Test** to send a sample job to the printer.
11. Click **OK** to save changes.

USB printer


1. Click the **Printers** tab.
2. If **Load LPD Server at boot time** is not available, lprng is not installed. You must install lprng to enable printing.

 **NOTE:** To install lprng, use the package management system (Synaptic or aptitude) and search for and install `lprng`. For more information about Synaptic, see [Synaptic on page 9](#).

3. Click **Add**.
4. Select **USB Printer**.



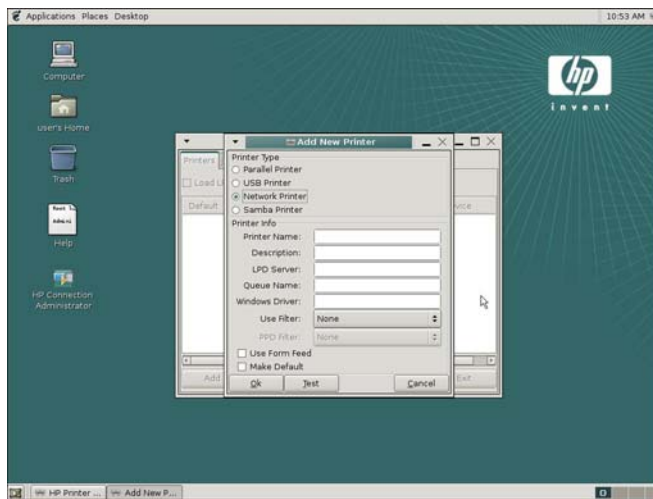
5. Type a **Printer Name** and **Description** (optional).
6. Use the value that defaults in the **Device Port** field. If the field is empty, there is no printer connected to the client.
7. If necessary, type a driver name in the **Windows driver** field. Citrix ICA and RDP use this field to set the printer driver for the session.

 **NOTE:** You must type the Windows driver name exactly as it is on the server.


8. From the **Use Filter** list, select `/usr/lib/lprng/filter/lpf`. If **NONE** is displayed, lprng is not installed.
9. If you want to make this the default printer, select **Make Default**.
10. If desired, click **Test** to send a sample job to the printer.
11. Click **OK** to save changes.

Network printer

1. Click the **Printers** tab.
2. If **Load LPD Server at boot time** is not available, lprng is not installed. You must install lprng to enable printing.
3. Click **Add**.
4. Select **Network Printer**.



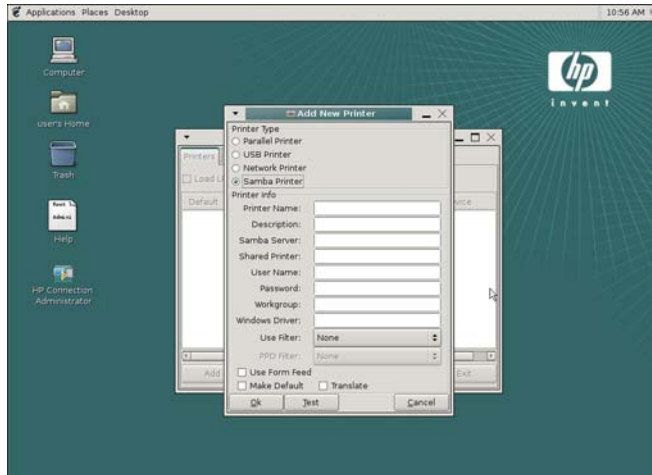
5. Type a **Printer Name** and **Description** (optional).
6. Select the appropriate **Device Port**. If the list is empty, there is no printer connected to the client.
7. Fill in the **LPD Server** field. This value is the Printer Server IP address.
8. Fill in the **Shared Printer** field. This value is the shared printer name on the server.
9. If necessary, type a driver name in the **Windows driver** field. Citrix ICA and RDP use this field to set the printer driver for the session.

 **NOTE:** You must type the Windows driver name exactly as it is on the server.


10. From the **Use Filter** list, select `/usr/lib/lprng/filter/lpf`. If **NONE** is displayed, lprng is not installed.
11. If you want to make this the default printer, select **Make Default**.
12. If desired, click **Test** to send a sample job to the printer.
13. Click **OK** to save changes.

Samba printer

1. Click the **Printers** tab.
2. If **Load LPD Server at boot time** is not available, lprng is not installed. You must install lprng to enable printing.
3. Click **Add**.
4. Select **Samba Printer**.



5. Type a **Printer Name** and **Description** (optional).
6. Select the appropriate **Device Port**. If the list is empty, there is no printer connected to the client.
7. Fill in the **Samba Server** field.
8. Fill in the **Shared Printer** field.
9. Fill in the **User Name**, **Password** and **Workgroup** fields. These values are determined by your Windows Server configuration.
10. If necessary, type a driver name in the **Windows driver** field. Citrix ICA and RDP use this field to set the printer driver for the session.

 **NOTE:** You must type the Windows driver name exactly as it is on the server.

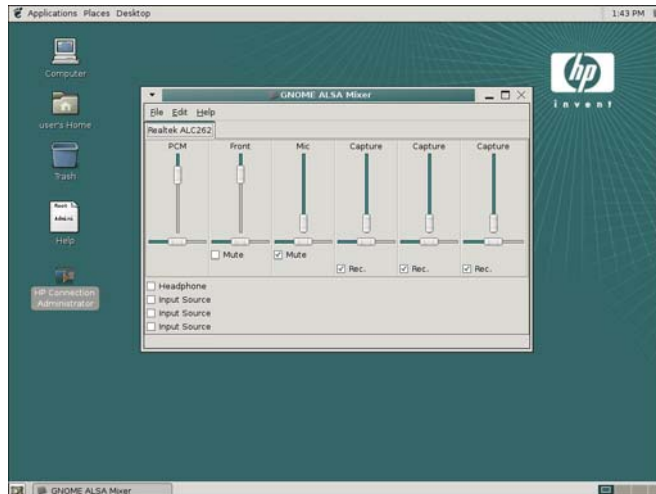
11. From the **Use Filter** list, select `/usr/lib/lprng/filter/lpf`. If **NONE** is displayed, lprng is not installed.
12. If you want to make this the default printer, select **Make Default**.
13. If you want the system to automatically translate carriage returns when printing from Linux to Windows and Windows to Linux, select **Translate**.
14. If desired, click **Test** to send a sample job to the printer.
15. Click **OK** to save changes.

Print jobs

To view print jobs:

1. Click the **Jobs** tab.
2. Select the printer to view from the **Select Printer** list.
3. Click the **Delete** or **Delete All** buttons to delete jobs from the print queue.

Sound — GNOME ALSA Mixer



The ALSA Mixer dialog box allows you to set a wide variety of sound controls for the thin client.

To open the ALSA Mixer, click **Applications > Sound & Video > GNOME ALSA Mixer**.

For more information on ALSA Mixer, go to the Advanced Linux Sound Architecture (ALSA) project home page at <http://www.alsa-project.org/>.

Login Window

Use the Login Window Preferences utility to select the type of interface to use for the login screen for users logging in from a local or a remote system, select Accessibility and Security preferences, and select the user settings desired. For more information on GNOME Login Window Preferences, go to <http://www.gnome.org>.

To access this utility, click **Desktop > Administration > Login Window**.



Of special importance—by default the t5735 image boots to the user desktop. To enable login access to the root desktop, click the **Security** tab and select the **Allow local system administration login** check box. To log in to the root desktop, click **Desktop > Log Out User > Log Out** and log in on the administrator login windows.

HP ThinState utility




HP ThinState capture and deploy allows you to capture a thin client image and deploy it to other thin clients of the same model. To access this utility, click **Applications > System Tools > HP ThinState Capture**.

The HP ThinState Capture tool is a simple wizard-based tool that can be used to capture an HP thin client image that can then be deployed to another HP thin client of identical model and hardware.

What do you need to have?


- An HP thin client Linux unit that contains the latest HP-provided image
- An HP-approved USB drive key

 **NOTE:** The HP ThinState Capture tool is not a standalone tool and can only be accessed by the administrator from within the thin client image.

Save all data on the USB flash drive to some other device prior to performing this procedure. The USB flash drive will be formatted and all data will be lost.

Close all other applications and do not make any changes to the system flash during this process.

To use HP ThinState to capture thin client settings:

 **NOTE:** It is recommended that any previously captured settings files be deleted from the USB flash drive before performing the following steps.

1. Attach a USB flash drive to your thin client.
A File Browser window opens on the desktop.
2. Click **Applications > System Tools > HP ThinState Capture**.

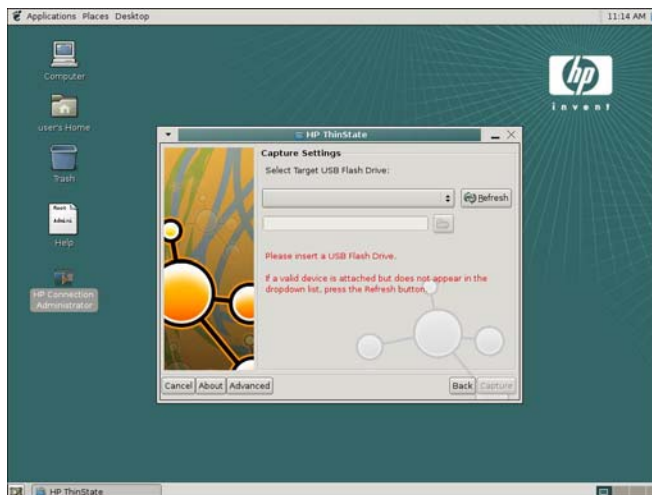
3. Click **OK** on the notification message.

The following window is displayed:




4. Click **Capture Settings**, and then click **Next**.

The following window is displayed:



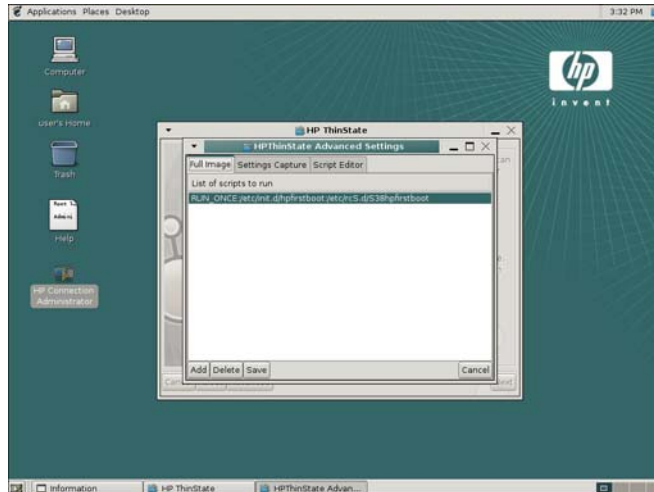
By default, all settings are captured. You can select only the settings you want to capture by using HP ThinState Advanced Settings.

To use Customized Captured Settings:

 **NOTE:** Files deleted from the **List of files to capture** are permanently removed and no longer available for future setting captures.

- a. Click **Advanced**.

The following window is displayed:



- b. Select the feature and click **Delete**. This eliminates all settings of the feature from the current and all future captured settings files.
 - c. Click **OK** on the notification. Repeat as necessary to complete the customization.
 - d. Click **Save**.
 - e. Click **OK** on the notification.
 - f. Close the HP ThinState Advanced Settings dialog window.
5. Select the target USB flash drive from the list.
 6. Click **Capture**.
 7. Click **OK** on the notification.
 8. Close the window.

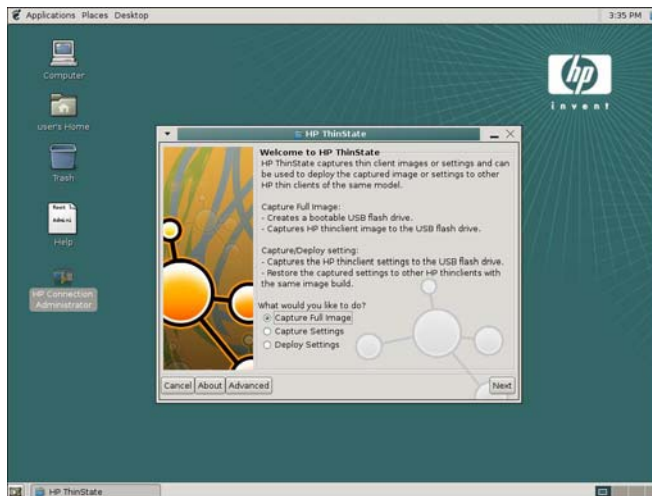
Use the capture settings on the USB drive to replicate (deploy) an image on different systems or to restore the original settings to a thin client.

To Use HP ThinState to deploy captured settings:

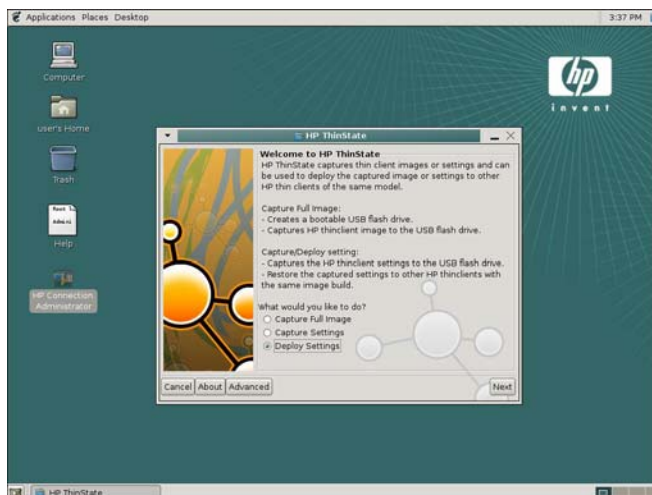
1. Attach the USB flash drive containing the previously captured settings
2. Click **Applications > System Tools > HP ThinState Capture**.

3. Click **OK** on the warning.

The following window is displayed:




4. Select **Deploy Settings**.



5. Click **Next**.
6. If multiple USB devices are connected, select the target USB flash drive from the list.
7. Click **Deploy**.


Once image settings have deployed, a notification that the settings have been deployed successfully and it is safe to remove the USB flash drive appears.

8. Click **OK** on the notification. The thin client immediately reboots.

 **NOTE:** If you do not remove the USB flash drive before reboot, you are prompted to press any key. Simply remove the flash drive and press any key to continue rebooting.

To use HP ThinState to capture a thin client full image:

1. Attach a USB flash drive to the thin client.

 **NOTE:** HP ThinState, when capturing a full image, automatically formats the USB flash drive and makes the flash drive bootable.

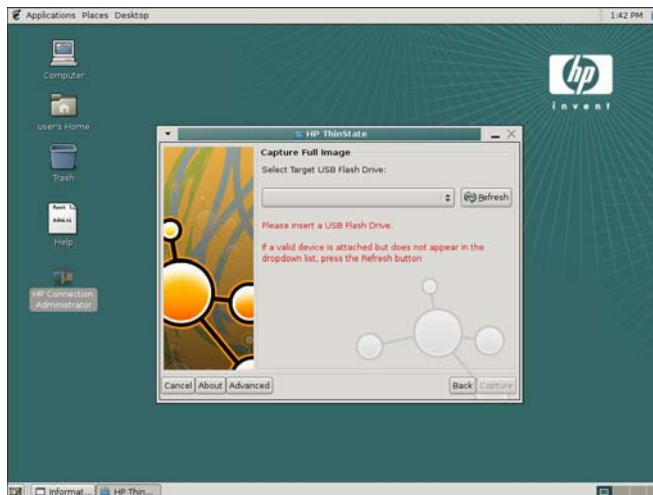
2. Click **Applications > System Tools > HP ThinState**.
3. Click on the warning. The following window is displayed.

The following window is displayed:




4. Select **Capture Full Image**, and then click **Next**.

The following window is displayed:



5. Click **Capture**.
6. Click **OK** on the warning.

 **NOTE:** HP ThinState, when capturing a full image, automatically erases all data on the USB flash drive.

7. Remove the USB flash drive and click **OK**.
8. Close the HP ThinState window.


Use the captured full image on the USB drive to replicate the image on different systems or to restore the original settings to a thin client.

To use HP ThinState to deploy a thin client full image:

1. Set the boot order in the F10 System BIOS to USB boot (if necessary).
2. Turn off the thin client.
3. Attach the USB flash drive to the thin client unit onto which you wish to deploy the captured image, and then turn on the unit.
4. Follow the on-screen instructions.

After you remove the USB flash drive and cycle power to the system, the image is unbundled. Do not interrupt or cycle power to the unit during this process.

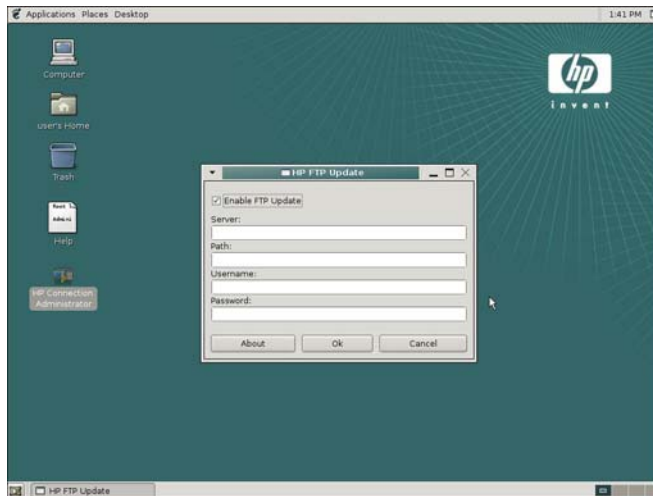
You may use the captured image (flash.dd) found in the USB flash drive in combination with Altiris Deployment Solution to remotely image multiple thin client units.

 **NOTE:** You must use flash.dd in conjunction with the HP ThinState Deploy utility (e.g., ibr.exe). Flash.dd is not compatible with the Altiris rdeploy.exe or rdeployt.exe utilities.

Please consult the HP Compaq Thin Client Imaging Tool at <http://h20000.www2.hp.com/bc/docs/support/SupportManual/c00485307/c00485307.pdf>.


For more information about Altiris, see <http://www.altiris.com/>.

FTP Update



Use HP FTP Update utility to enable automatic FTP updates as an alternative to the Altiris Deployment Solution. Enabling this feature allows you to configure the thin client to check a specific ftp location for a newer thin client settings file upon reboot.

To access this utility, click **Applications > System Tools > HP FTP Update**.

 **NOTE:** FTP Update does not support full image updates on the t5725.

As the Network Administrator, you can set the DHCP Scope Options for FTP server. Find these options at </etc/ftpclient.conf>:

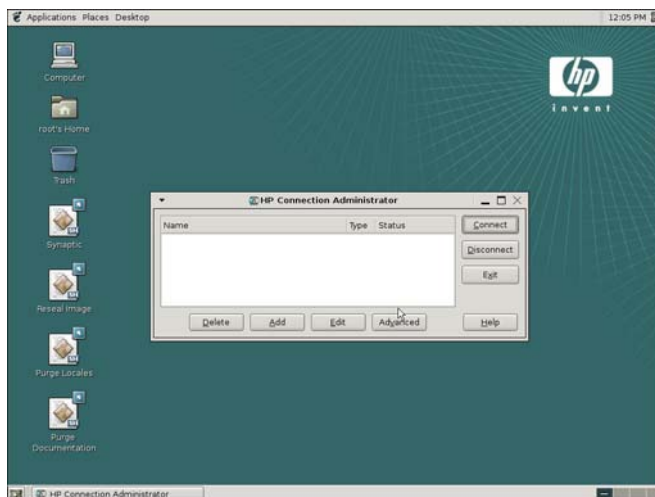
- 180 – force ftp imaging
- 181 – ftp server ip
- 182 – ftp server path
- 183 – user name
- 184 – password
- 190 – altiris server ip

3 HP Connection Administrator

HP Connection Administrator allows you to manage server and application connections by setting up Web, RDP, XDM, ICA, and other types of connections and assigning them to users.

Click **Applications > Internet > HP Connection Administrator** to access HP Connection Administrator. To access all HP Connection Administrator functionality, you must log in with root permissions as a member of the root group; however, non-root users can run and be assigned to connections.

HP Connection Administrator window



HP Connection Administrator allows you to add, edit, and delete connections.

Click **Applications > Internet > HP Connection Administrator** to access HP Connection Administrator.



NOTE: You must log in with root permissions to access all components of the HP Connection Administrator window.

The HP Connection Administrator features the following:

- **Connections Display:** Lists all server and/or application connections assigned to the user currently logged on to the terminal. For each connection, the display shows the name, type, and status of the connection.

NOTE: Double-click any displayed connection to activate that connection.

- **Connect:** Click to activate a selected connection.

- **Disconnect:** Click to disconnect a selected connection.
 - **Exit:** Click to exit HP Connection Administrator if the terminal is not in Kiosk mode. If the terminal is in Kiosk mode, click this button to end the session. If you are a member of the administrator or shutdown groups, the thin client displays options to turn off or reboot the terminal.
 - **Delete:** Click to delete a selected connection.
-
-  **NOTE:** The connection is deleted from the list of connections available to all users, not just the user currently logged on to the terminal.
-
- **Add:** Click to create a new connection and add it to the list of connections assigned to the user currently logged on to the terminal.
-
-  **NOTE:** You can assign a new connection to other users using the Advanced Configuration utility. Click **Advanced** to access this utility.
-
- **Edit:** Click to edit the selected connection.
 - **Advanced:** Click to access the Advanced Configuration utility, where you can configure and assign connections and configure the terminal user interface.

Connection types

You can use the HP Connection Administrator to create the following types of connections:

- Citrix ICA
- Iceweasel
- rdesktop
- XDM
- Other

Adding, editing, and deleting connections

You can add, edit, or delete connections in the HP Connection Administrator or in the Advanced Configuration utility. However, you need to note the following important difference based on *where* you add connections:

- Adding a connection in the HP Connection Administrator adds it *only* to the list of connections assigned to the user currently logged on to the terminal.
- Adding a connection in the Advanced Configuration utility automatically adds the connection to the currently selected user. The new connection is also available in the Advanced Configuration utility for assignment to other users.

For more information about the different types of connections, see the related sections later in this chapter.

To add a connection:

1. Click **Add**.

The system displays the **Add Connection** dialog box, which lists the connection types registered with the system.

2. Select the type of connection you want to create and click **OK**.
3. Follow the on-screen instructions specific to your selection to add the connection to the user's connections list and to the list of available connections that you can assign to other users in the Advanced Configuration utility.

To edit a connection:

- Select the connection and click **Edit**.

To delete a connection:

- Select the connection and click **Delete**. The connection is deleted from all user connection lists.

Citrix ICA

The ICA Connection window allows you to configure Citrix settings.

To configure Citrix ICA settings:

1. Click **Applications > Internet > HP Connection Administrator**.

The **HP Connection Administrator** window opens.

2. Click **Add**.

The **Add Connection** window opens.

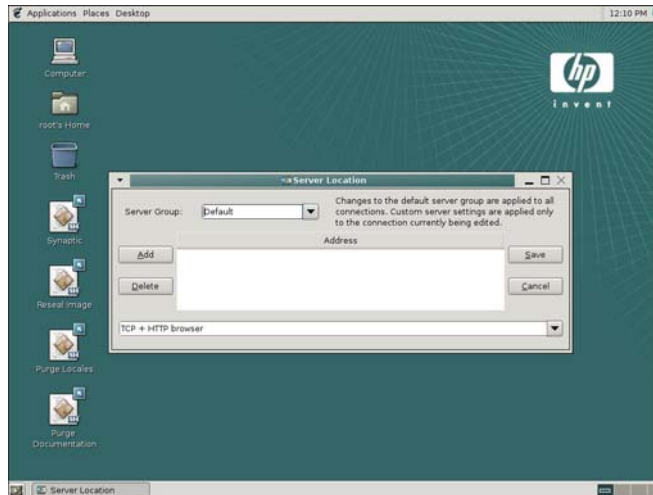
3. Select **Citrix ICA** and click **OK**.

The **ICA connection** window opens.




4. Use the following to configure a Citrix ICA connection:

- **Server** tab: Allows you to choose published applications or add a server and to configure server location settings
 - Select the appropriate radio button depending on whether the connection being created is to a Server or to a Published Application. Click the **Refresh** button to update the list of available connections of that type or a specific server name you can type.
 - **Server Location** button: Click to launch the Server Location screen where you can add or delete specific server connections, for all connections or for this specific connection.



- To add or delete connections for all ICA server connections, select **Default** from the **Server Group** list.
- To add or delete ICA server connections for this specific connection, select **Custom** from the **Server Group** list.
- Modify settings for a newly added ICA server connection using the **Global ICA Setting** button on the **HP Connection Administrator** window. For more information about Connection Administrator, see [HP Connection Administrator on page 35](#).

 **NOTE:** Adding or deleting ICA servers from the Default group on this screen adds or removes them for all ICA connections.

- **Applications:** Allows you to select applications by entering a command line.
 - **Command line:** If required, type the specific command line to launch an application. The user's Citrix environment determines whether the command line is required.
 - **Working directory:** If required, type the working directory information for the user's specific environment.
- **Logon:** Allows you to specify logon information for connecting to a remote application. If desired, you can specify logon information to be used when connecting the remote application.

Select **Allow smartcard logon** to enable smart card authentication with ICA connections.

- **Window:** Allows you to specify how the application window size and color. Select **Seamless Window** to enable the connection to start in seamless windows mode.

- **Options:** Allows you to configure Sound quality, Microphone input, SpeedScreen, Mouse Click Feedback, Local Text Echo, Encryption level, and to Name the connection. You can also enable Compress data stream, Enable sound, and Use disk cache for bitmaps.

Refer to Citrix documentation for a description of settings at http://support.citrix.com/servlet/KbServlet/download/180-102-12980/Unix_Client_Admin_Guide.pdf.

- 📝 **NOTE:** There is no one best configuration for these options. Each option may or may not be beneficial to the connection, depending on the installed Citrix ICA environment.

The Use disk cache for bitmaps option may be slower and cause excessive wearing of the flash drive.

- **Firewall Settings:** Allows you to configure the proxy address and port.

Iceweasel connection

The Iceweasel connection allows you to create a browser connection.

To configure Iceweasel:

1. Click **Applications > Internet > HP Connection Administrator**.

The **HP Connection Administrator** window opens.

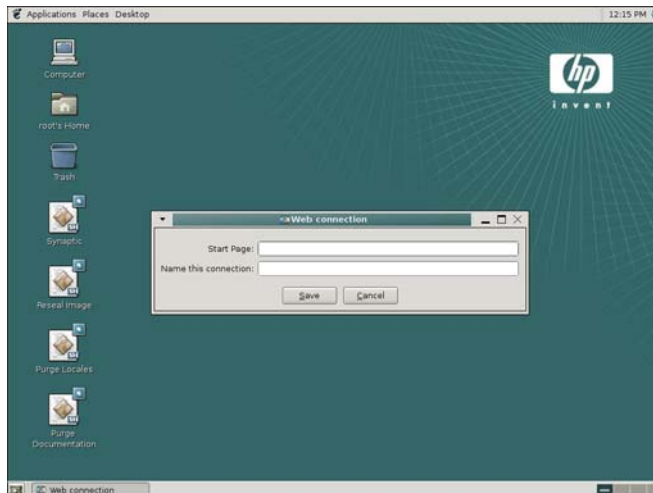
2. Click **Add**.

The **Add Connection** window opens.

3. Select **Iceweasel**.

4. Click **OK**.

The **Web connection** window opens.



5. Complete the following settings to configure this connection:

- **Start Page:** Enter the Web address to launch with this connection.
- **Name this connection:** Type a name to associate with this connection.

rdesktop connection

The rdesktop connection allows you to set up a remote desktop connection. rdesktop is an open source client capable of speaking Remote Desktop Protocol (RDP). Unlike Citrix ICA, rdesktop requires no server extensions.

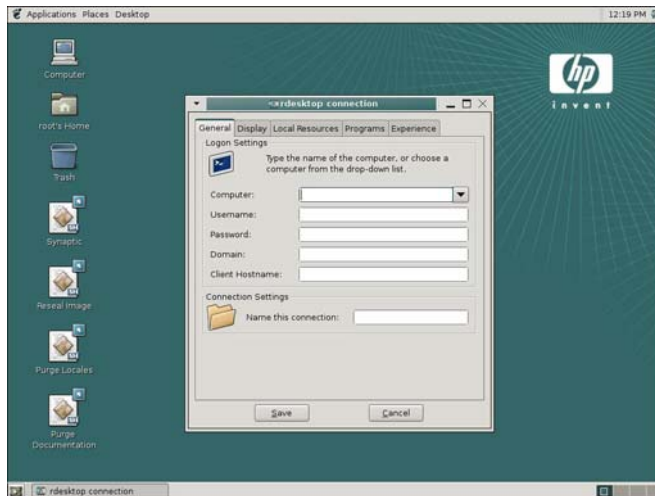
To configure rdesktop:

1. Click **Applications > Internet > HP Connection Administrator**
2. Click **Add**.

The **Add Connection** window opens.

3. Select **rdesktop**.
4. Click **OK**.

The **rdesktop connection** window opens.



5. Use the following tabs to configure a rdesktop connection:

- **General.**

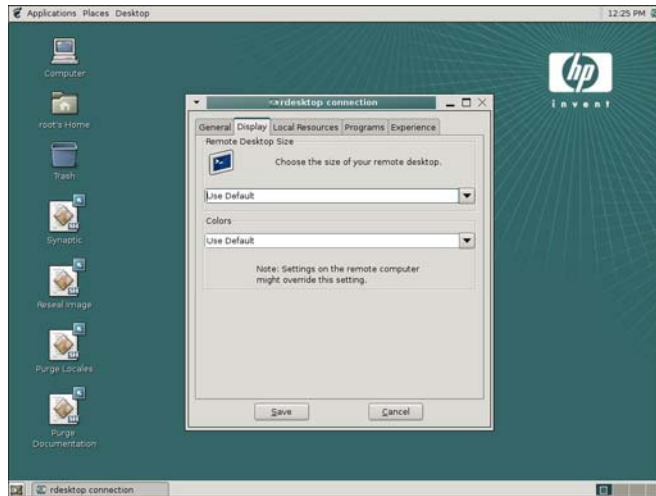
Allows you to select a remote computer and provide the logon credentials for accessing this computer.

To select a computer:

1. Type the computer name or select a computer from the drop-down list.
2. Type the user name and password.
3. (Optional) Type the domain.
4. (Optional) In the **Client Hostname** field, type the host name for the terminal services session. This entry allows you to dictate what is displayed when viewing shared resources.
5. In **Connection Settings** section, type a name for the connection.

- **Display.**

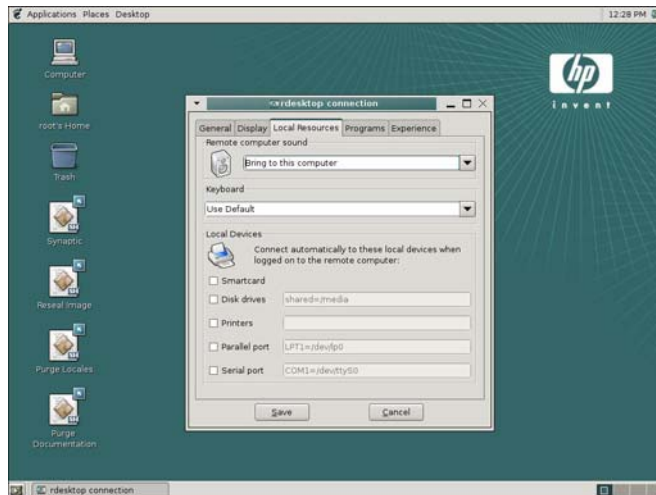
Allows you to configure the size and color of the remote desktop.



NOTE: Settings on the remote computer might override this setting. The remote computer may be unable to pass to the thin client the requested settings.

- **Local Resources.**

Allows you to configure local devices.




This window allows you to configure the following:

- Remote computer sound, which allows you to play the remote computer's sound on your thin client, play no sound at all, or leave the sound at the remote computer.
- The desired keyboard language.
- Connection to the following local devices:
 - disk drives**—Type the path. Using a symbolic link may result in undesirable behavior.
 - printers**—Type the path to the printer.

parallel ports—Type the location of the physical device. The default is `/dev/lp0`.

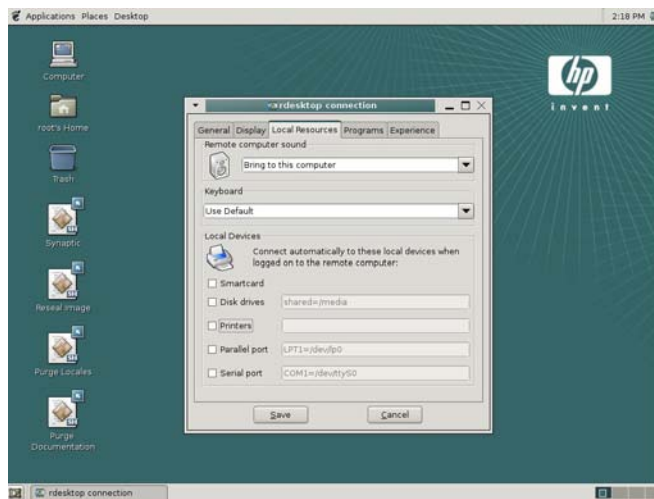
serial ports—Type the location of the physical device. The default is `/dev/ttyS0`.

For more information, type the `rdesktop` command in the console.

 **NOTE:** To forward `rdesktop` connections, HP recommends redirecting from `/media/usb0` (where `0` = 1st device, `1` = 2nd device, `2` = 3rd device, `3` = 4th device) for hard drive and USB drive key. As devices are added and removed, links are automatically created in this location. For USB CD-ROM drives, redirect from `/media/cd`.


You can change device ownership and attributes by editing `/etc/fstab`. Type `man fstab` or `man mount` at a `xterm` session command line to display the options and settings available for editing and configuring “`fstab`”.

If you select the **Printers** check box, the following window is displayed.



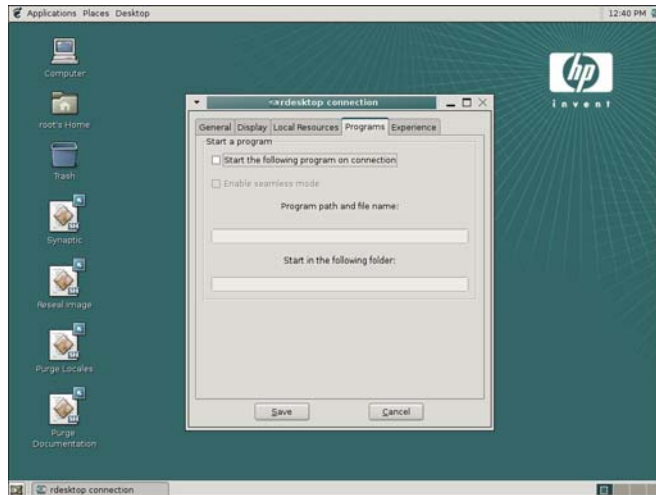
This window displays installed printers for you to select.

Simply select the printer to redirect.

 **NOTE:** When creating an `rdesktop` connection, if you receive a printer error (for example, “Couldn’t open printcaps”), make sure you properly installed the printer using the printing applet in the system setting control panel.

- **Programs.**

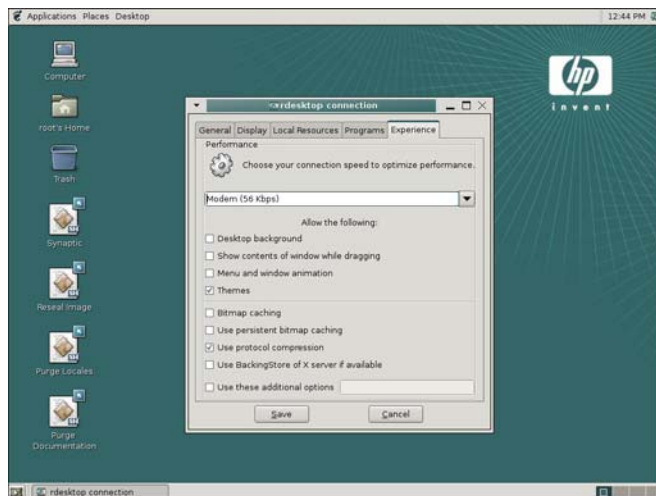
Allows you to launch programs through the remote desktop connection.



To launch a program:



1. Select **Start the following program on connection**.
 2. Type the program path and file name.
 3. Type the folder from which you want the program to launch.
 4. Click **Save**.
- **Experience.**

Allows you to configure the thin client desktop and performance factors.



You can configure the following:

- **Connection speed:** Select the speed at which the thin client connects.
- **Desktop background:** Select to allow a desktop background to display.
- **Show contents of window while dragging:** Select to allow the contents of windows to display when you drag the window.
- **Menu and window animation:** Select to allow menu and window animation.

- **Themes:** Select to allow themes.
 - **Bitmap caching:** Select to allow bitmap caching, which places commonly used bitmaps in a file on the thin client. This process improves performance by minimizing the amount of display information that must be passed over a connection.
-
-  **NOTE:** Depending upon connection configuration, selecting **Bitmap caching** may or may not improve performance.
-
- **Use persistent bitmap caching:** Select to allow persistent bitmap caching, which stores bitmaps that are sent from the server on permanent media, such as a hard disk. Upon connection, the thin client informs the server of the bitmaps it has so that the server does not have to resend them.
-
-  **NOTE:** Depending upon connection configuration, selecting **Use persistent bitmap caching** may or may not improve performance.
-
- **Use protocol compression:** Select to enable protocol compression, which makes communication between computers faster.
 - **Use BackingStore of X server if available:** Select to enable BackingStore. A BackingStore contains the set of operations that can be performed on a JNDI Attributes. Java Naming and Directory Interface (JNDI) is a programming interface (API) that allows you to connect Java programs to naming and directory services such as DNS, LDAP, and NDS.
 - **Use these additional options:** Select and populate to use additional rdesktop options.

For additional information, please visit the rdesktop Web site at <http://www.rdesktop.org>.

XDM connection

The X Display Manager (XDM) connection window allows you to create and configure an XDM connection.

To configure XDM settings:

1. Click **Applications > Internet > HP Connection Administrator**.
2. Click **Add**.

The **Add Connection** window opens.

3. Select **XDM**.

4. Click **OK**.

The **XDM connection** window opens.



5. Use the following options to configure an XDM connection:
 - **Hostname:** Type the XDM server name or server IP address.
 - **Display:** Select the Linux display setting for this XDM connection to utilize. The display number determines which display to use.
 - **VT (Virtual Terminal):** Select **Automatic**. Consoles 9 thru 12 are available, and you can enable other consoles by editing `/etc/inittab`. For example, to select **Automatic**, press **Ctrl+Alt+F9** to access the first XDM display. To select VT 12, press **Ctrl+Alt+F12** to access the fourth XDM display.
 - **Keymap:** Select whether to use the language based on the local thin client settings, the server settings, or select a specific language.
 - **Query Mode:** Select the type of XDM connection:
 - **Broadcast:** Uses the first host that replies.
 - **Indirect:** Provides a list of available hosts.
 - **Direct:** Uses a single host.
 - **Name this connection:** Type a name to associate with this XDM connection.

Other

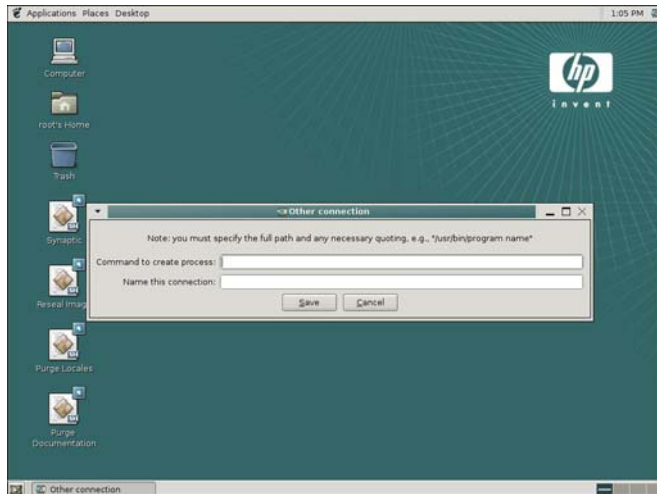
To create an Other connection:

1. Click **Applications > Internet > HP Connection Administrator**.
2. Click **Add**.

The **Add Connection** window opens.
3. Select **Other**.

4. Click **OK**.

The **Other connection** window opens.



5. Type the full path and any necessary quoting, e.g., `/usr/bin/program_name` in the **Command to create process** field.

For example, to launch an Xterm and then execute the command `ls`, type `xterm -hold -e ls` in the **Command to create process** field.

NOTE: If a command is not properly interpreted by the shell, place commands in a script and run the script as an Other connection.

The Other connection dialog box allows The HP Connection Administrator to launch any other applications or command lines that are available on the system. For example, to launch an Xterm and then execute the command `ls`, enter `xterm -hold -e ls` in the **Command to create process** field.

NOTE: If you are using HP Connection Administrator, you need to use a command such as `xterm -hold -e ls`, so the commands output is available in the Xterm.

Advanced Configuration utility

You can configure and assign connections and configure the user interface for the terminal in the Advanced Configuration utility. To access the utility, click the **Advanced** button in the **HP Connection Administrator** window.

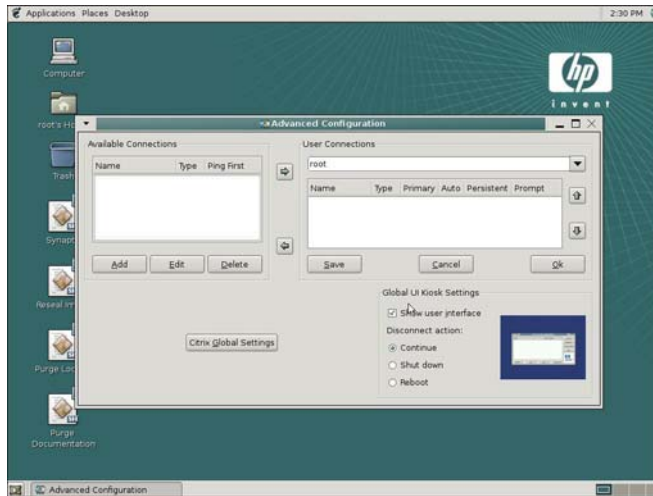
NOTE: You must log in with root permissions to access the Advanced Configuration utility.

To access the Advanced Configuration utility:

1. Click **Applications > Internet > HP Connection Administrator**

2. Click **Advanced**.

The **Advanced Configuration** window opens.



Configuring available connections

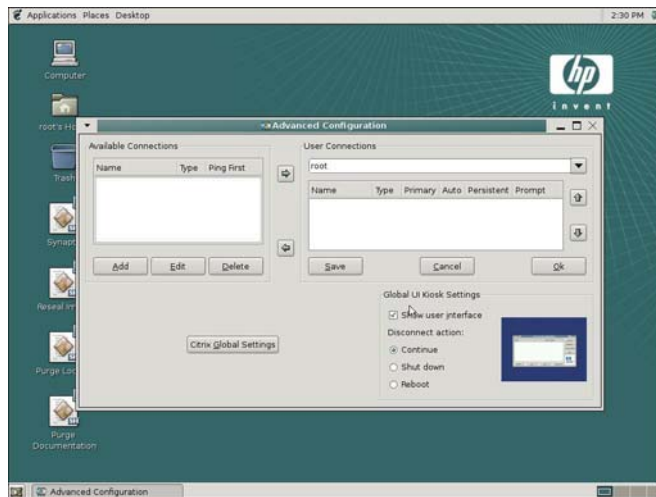
The **Available Connections** area on the left side of the screen lists all connections that you can assign to users. Use the following features to modify, add, or delete connections:

- **Ping First** column allows you to enable the Connection Administrator to ping the server before attempting a connection. If the server name fails to resolve or the server fails to respond to the ping, the thin client aborts the connection attempt. If you are having trouble establishing a connection, disable **Ping First**.
- Click **Add** to create a new connection and add it to the list of available connections in the current user's connection list.
- Select a connection and click **Edit** to edit the selected connection.
- Click **Delete** to delete a selected connection. The connection is deleted from the lists of connections assigned to all users.


 **NOTE:** For more information, see [Adding, editing, and deleting connections on page 36](#).

Configuring user connections

The **User Connections** area on the right side of the screen displays all connections currently assigned to the user selected from the drop-down list at the top of the window. Select a user from the list and use the following features to configure connections for the user:



- **Name:** Displays the name of the connection. You cannot change the connection name.
- **Type:** Displays the type of connection (Web, RDP, XDM, ICA, or other). You cannot change the connection type from this column.
- **Primary:** Select the check box to designate a connection as primary. The thin client attempts secondary connections if the primary connection fails. If more than one secondary connection is associated with a primary connection, the thin client prioritizes the secondary connections starting with the first connection in the group.
- **Auto:** Select the check box to designate whether a user is automatically logged on when HP Connection Administrator starts up. You must log in using the root account to enable or disable automatic connections.
- **Persistent:** Select the check box to designate whether the system will attempt to reconnect when a connection fails. You can only make primary connections persistent.
- **Prompt:** Select the check box to configure the system to determine whether a user is still using the thin client after a group of connections fails. Clear this check box to allow the system to continue to cycle through the connections in the group.

 **NOTE:** The user must quit the current session to disable automatic connection.

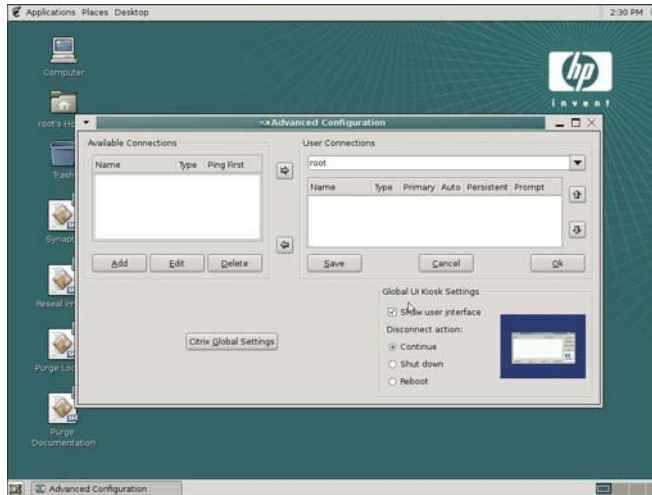
- **Right arrow:** Click to add a selected Available Connection (left list box) to the selected user's connection list (right list box).
- **Left arrow:** Click to add a selected Available Connection (left list box) to the selected user's connection list (right list box).
- **Up arrow:** Click to move a selected user connection up in the list.
- **Down arrow:** Click to move a selected user connection down in the list.
- **Save:** Click to save changes made to user connections and user interface settings.
- **Cancel:** Click to cancel unsaved changes made to user connections and user interface settings and exit the Advanced Configuration utility.
- **OK:** Click to save changes made to user connections and user interface settings and exit the Advanced Configuration utility.

Assigning connections to users

After creating a connection using the root account, you can assign it to users.

To assign a connection to users:

1. In the HP Connection Administrator, click the **Advanced** button to access the Advanced Configuration utility.



2. Under **User Connections**, select the appropriate user.
3. Under **Available Connections**, select the connection in the list of available connections, and then click the **Right arrow** button to copy the connection to the list of connections for the user.
4. Click **Save** to save the updated list of connections for the user.

Configuring connections as primary, secondary, or to auto connect

Use the following procedure to configure connections in the Advanced Configuration utility.

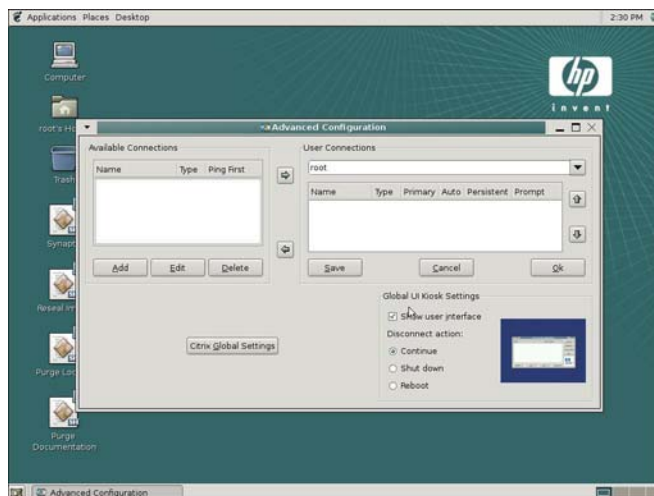
- You can designate connections as primary or secondary. A primary connection is the first attempted in a group of connections. Secondary connections are attempted if the primary connection fails, and attempt to connect in their listed order. You can assign several primary connections, each with several associated secondary connections.
- You can set primary connections to automatically connect when HP Connection Administrator starts up.
- You can set primary connections to automatically reconnect if the connection is lost.

To configure connections:


1. In the HP Connection Administrator, click the **Advanced** button to access the Advanced Configuration utility.



2. Under **User Connections**, select the appropriate user.
3. Select the connection in the user's connection list that you want to modify.
4. If you want to make a connection a primary connection:
 - a. In the **Primary** column, select the check box.
 - b. To assign a secondary connection to the primary connection, clear the check box in the **Primary** column that you want to be the secondary connection. The connection becomes a secondary connection to the first primary connection directly above the secondary connection in the list.




- c. To arrange the connections in the order that you want them to connect, select a connection and click the **Up arrow** and **Down arrow** to move the connection. Secondary connections are always associated with the first primary connection above them in the list.
- d. Click **Save** to save your changes.

 **NOTE:** Since each secondary connection must have an associated primary connection listed above it, the connection at the top of the list must be a primary connection.


5. If you want to set automatic connections:

- a. In the **Auto** column, select the check box.
- b. Click **Save** to save your changes.


 **NOTE:** You can set only primary connections to automatically connect when HP Connection Administrator is launched.

6. If you want to set automatic reconnections:

- a. In the **Persistent** column, select the check box.

 **NOTE:** You cannot disable automatic connection unless the user quits the current session.

- b. Click **Save** to save your changes.

 **NOTE:** You can set only primary connections to automatically reconnect.


GLOBAL UI (User Interface) in KIOSK Mode

Global UI Kiosk Settings allows you to change the way the user interface is displayed.



The preview pane to the right of the check box indicates how the user interface is displayed.

- **Show user interface:** Select the check box to display the HP Connection Administrator. Clear the check box to hide the HP Connection Administrator window from users who are not in the root group. This further locks down the terminal. You can use this feature for connections set to automatically start at boot up where the HP Connection Administrator window is not needed.

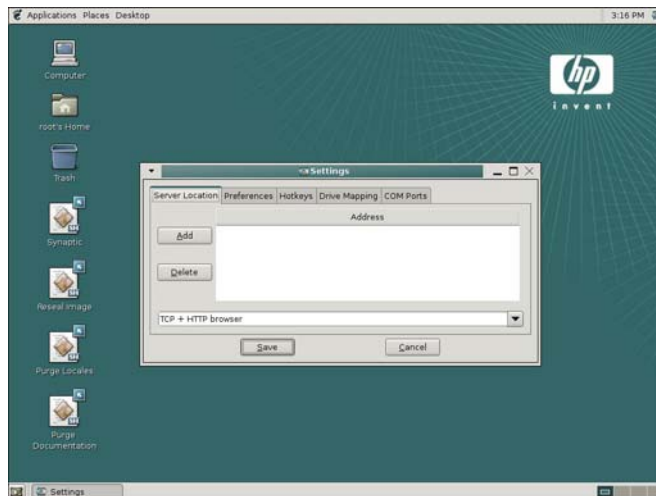
 **NOTE:** The user interface is always shown for users in the root group.

You must reboot the terminal for changes to take effect.

- **Disconnect action:** Select the action taken when the user ends a session. You can force the thin client to Continue, Shut down, or Reboot.

Setting Citrix global settings

Click the **Citrix Global Settings** button to configure global Citrix settings.



Server Location

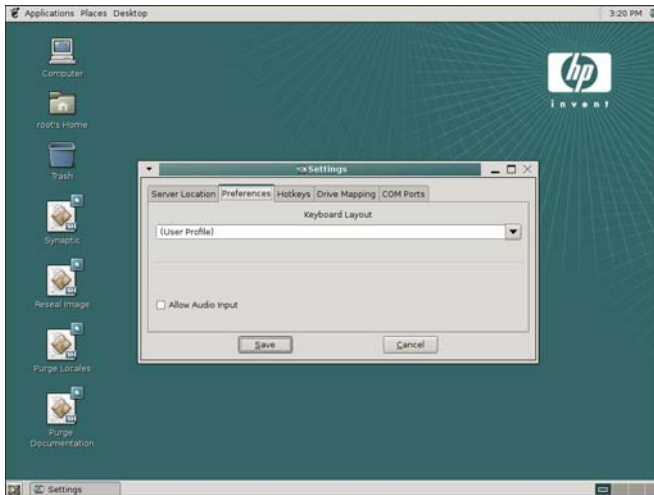
Use this tab to add or modify Citrix servers.

To add a server:

1. Select the browser type from the list in the box at the bottom of the dialog box.
2. Click **Add**.
3. Type the server address and port number.
4. Click **OK**.
5. Select the appropriate browser from the pull-down list at the bottom of the window.
6. Click **Save**.

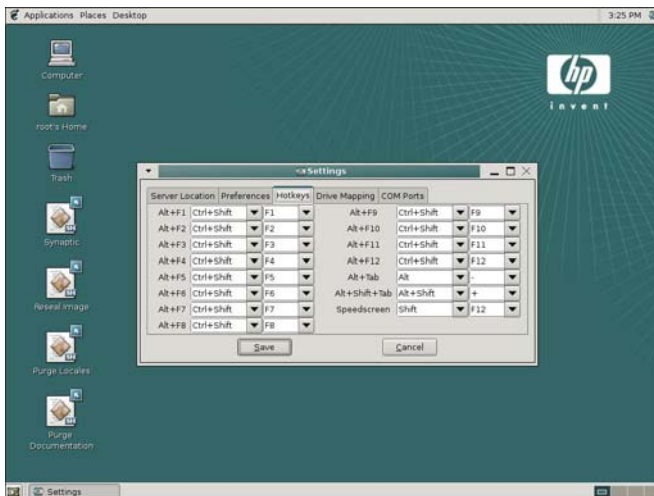
Preferences

Use this tab to select the keyboard language.



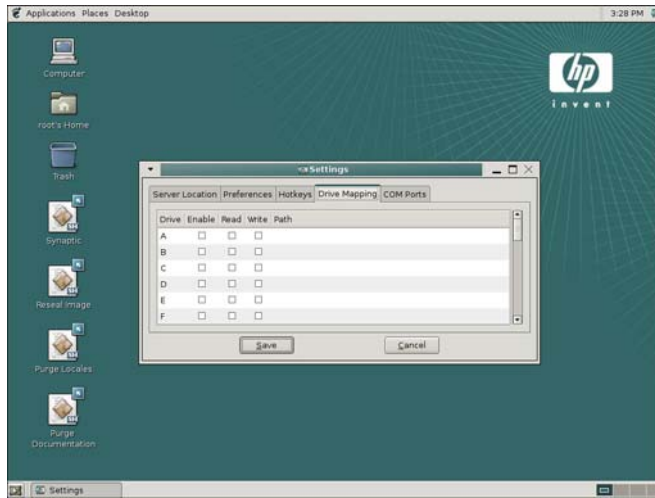
Hotkeys

Use this tab to configure thin client hot keys.



Drive Mapping

Use this tab to assign drive numbers to drives and configure whether the drive is enabled, readable, and can be written to.



To configure a drive:

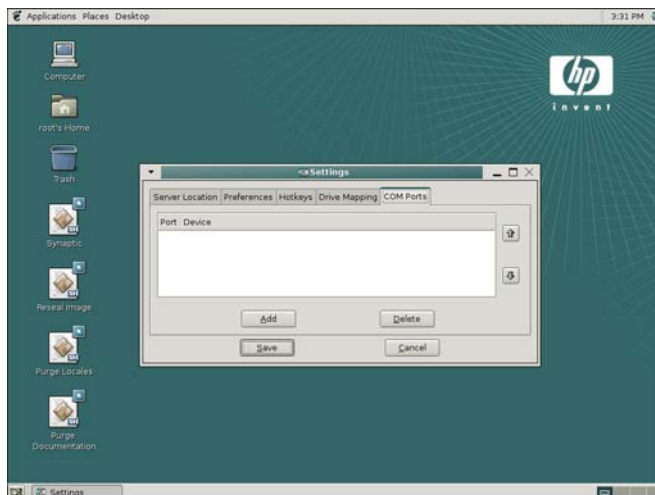
1. Click the drive letter to configure.
2. Select the **Enable**, **Read**, or **Write** check boxes to assign those characteristics to the drive.
3. With the drive letter selected, click in the **Path** column.
4. Type the drive path.

NOTE: The preferred method of forwarding in Citrix connections with the HP Linux image is to redirect from `/media/usb0` (where `0` = 1st device, `1` = 2nd device, `2` = 3rd device, `3` = 4th device) for hard drive and USB drive key. As devices are added and removed, links are automatically created in this location. For USB CD-ROM drives, redirect from `/media/cd`. This setting will be in place for all Citrix connections from this unit.

You can change device ownership and attributes by editing `/etc/fstab`. Type `man fstab` or `man mount` at a Xterm session command line to display the options and settings available for editing and configuring “fstab”.

COM ports

Use this tab to map devices to communication ports.



To map devices:

1. Click **Add**.
2. Under **Folders**, select the location of the device.
3. Under **Files**, select the device.
4. Fill in the **Selection: /dev** field.
5. Click **OK**.

4 Citrix

This chapter provides an overview of the Citrix (ICA) program. For more detailed help in configuring the Citrix client, see the Clients for UNIX Administrator's Guide at <http://support.citrix.com/docs/>.

Introduction

The Linux thin client offers two different options you can use to establish an ICA connection:

- **Citrix ICA Connection Manager**—software application developed by Citrix Corporation.
- **HP Connection Administrator**—user interface developed by HP.

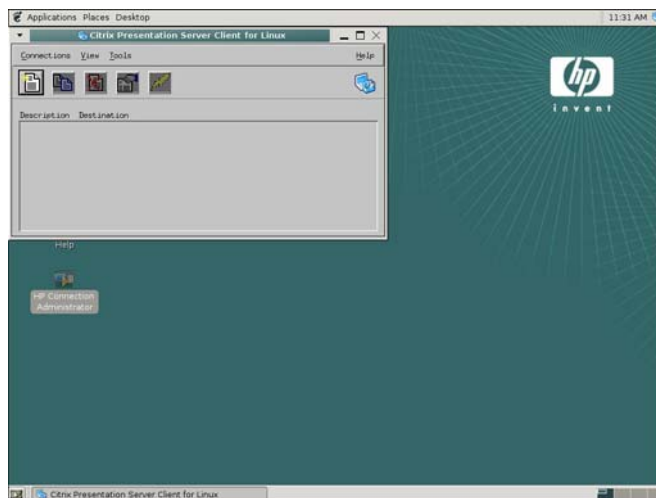
 **NOTE:** Certain Citrix functions, such as Citrix ICA PNAgent capability, are not accessible under HP Connection Administrator.

You can access Citrix ICA by clicking **Start > Programs > Apps > Net > Citrix ICA Connection Manager**.

Citrix (ICA)

The Citrix (ICA) Connection Manager allows you to set up and configure Citrix ICA client connections.

To access the Citrix ICA Connection Manager, click **Applications > Internet > Citrix Presentation Server Client**.



ICA Client Settings

To view or set the preferences for ICA, select **Tools > Settings**. From the Settings window, you can select keyboard layouts and types, enable or disable sounds, configure audio input, and allow automatic client updates.

Preferences

From the Settings window, you can configure Window color and size, determine server location, configure hot keys, configure or clear disk cache, map drives, add COM ports, configure firewall, enable auto reconnect, and configure PNA.

Connection View

In Connection View, you can create, modify, or launch connections, and begin a session on a Citrix server. To access Connection View, click **View > Connection View**.

Program Neighborhood Agent (PNAgent)

In PNAgent View, you can view and activate the applications that have been published in the Neighborhood on a Citrix server or server farm. To access PNAgent View, click **View > PNAgent View**.

5 Support

If you require support for your Linux-based thin client, contact your region's HP Technical Support Center. While HP provides support for Linux-based thin clients, HP does not provide technical support for the Linux operating system or application components that are obtained from the open source community.

Support contact information is available at the Contact HP link on the HP home page or at http://welcome.hp.com/country/us/en/contact_us.html.

Hardware warranty

The hardware warranty is three years limited coverage and can be upgraded by purchasing an optional HP Care Pack.

Software warranty

The software warranty covers several features, including:

- Altiris Remote Management Client
- Citrix Client
- Network Management Applet


 **NOTE:** Altiris is supported directly by Altiris, Inc. All other services and features are from open source community packages and are not supported by HP.

Image updates and add-ons

HP provides periodic updates to the image, as well as add-ons. Check the HP support site for important documentation that provides specific information for your image version and for installing add-ons. You can find support documentation at <http://www.hp.com/support/>.

To search for support documentation, enter your country and product name, and then click **Manuals**.

Custom image requests

To obtain a custom image from HP, contact your HP Account Team, which will work through the HP Specials Process to understand the opportunity, image requirements, schedule, and costs involved.

Availability of Linux Open Source code

You can get the source code for Open Source components contained in the HP t5735 in three ways:

- Go to <http://www.debian.org> or the Debian stable repositories, locate the specific file you are interested in, and then download the source files.
- Download the source file package from the HP Debian repository located at <ftp://ftp.hp.com/pub/tcdebian>.
- On media by mail: Source code is available only on recordable media. To obtain the media, contact your local HP Customer Support Center. HP may charge a nominal fee for the media.

6 Frequently Asked Questions

Linux operating system

Question	Answer
How do I tell what the image version/build number is?	To obtain the image version, from the desktop click Applications > System Tools > HP System Information . The dialog box provides system information, including the image version. The image version number is obtained from the file <code>/etc/imageid</code> .
How and where is the Linux image stored in flash memory?	The image is stored in various formats. The boot up process decompresses and loads certain portions of the image in RAM. Some features and aspects of the image are not loaded until they are needed. The image is stored in the following partitions (both are formatted as ext2): <code>/dev/hda1 - /</code> <code>/dev/hda2 - /mnt, /root, /home, /media</code>

System Administration

Question	Answer
How are users managed?	A system administrator creates new user accounts and assigns users to groups. The two recommended methods to manage users are: <ul style="list-style-type: none">• You can install the GNOME-system-tools package and use the Users and Groups application in the Desktop > Administration menu.• Standard command-line tools to manage users. Letter case matters when using command line names and option switches.

System Management

Question	Answer
How do you configure the system hardware clock?	Set the system hardware clock using the BIOS setup utility:

Question	Answer
	<ol style="list-style-type: none"> 1. Reboot the system and press F10. 2. After the Setup utility displays, press Esc. 3. Select the standard CMOS features option and press Enter. 4. Set the date and time using Page Up and Page Down. 5. To save the changes, press F10 and Enter.
How do you configure the date and time?	The date and time can be configured either from the command line or from Applications > System Tools > HP Date and Time Manager .
How do you change the boot order?	<p>Run the BootOrder utility to alter the order of the boot up device. The utility is installed with the standard image.</p> <p>To run the BootOrder utility, perform the following steps:</p> <ol style="list-style-type: none"> 1. Click Applications > Accessories > Root Terminal. 2. To use the BootOrder utility, execute <code>cd /usr/share/hp</code>, then type <code>./hpbootorder</code> and follow the listed options. <p>To use the RepSet utility, execute <code>./hprepset</code> (without parameters) and follow the listed options.</p>
How do you synchronize the BIOS and system time?	<p>To synchronize the BIOS and system time, use the <code>hwclock</code> command. This command allows you to either synchronize the BIOS time to the system time, or synchronize from system time to BIOS time. This command without any parameters displays the current date and time.</p> <pre>hwclock [-r --show] [-s --hctosys] [-w --systohc] [-l --localtime] [-u --utc]</pre> <p>Query and set the hardware clock (RTC).</p> <p>Options</p> <ul style="list-style-type: none"> • <code>-r</code>: Read hardware clock and print result • <code>-s</code>: Set the system time from the hardware clock • <code>-w</code>: Set the hardware clock to the current system time • <code>-u</code>: The hardware clock is kept in coordinated universal time • <code>-l</code>: The hardware clock is kept in local time • <code>-directisa</code>: to the <code>hwclock</code> command or it will not work
How do you set up a kiosk?	Login as user. Use Desktop > Preferences > Session to choose which applications to start. You may remove <code>nautilus</code> and <code>gnome-panel</code> and add <code>/usr/bin/cman</code> to use HP Connection Administrator instead. Install <code>Pessulus</code> or <code>gconf-editor</code> and configure it, if further lockdown is desired.

Question	Answer
	NOTE: Default key bindings allow Alt+F2 to run an application unless disable command line is configured in the Pessulus Lockdown Editor or in the desktop/gnome/lockdown tree of the gconf Configuration Editor.
Why can I not select certain resolution that I believe my monitor supports?	The graphics controller, driver and monitor must all support the desired resolution with appropriate timing parameters, furthermore some utilities do not allow resolutions above the current resolution to be selected. HP recommends using the HP Display applet for changing screen resolutions. Please see <code>/var/log/Xorg.0.log</code> for more details. Possible workarounds include disabling the <code>xrandr</code> extension and editing <code>/etc/X11/xorg.conf</code> .
Why can I not to see widescreen resolutions modes on my t5725 after I load the t5735 image onto my t5725?	The t5735 has a different chipset and video driver. The t5725 does not support all of the video or widescreen resolutions modes that are supported on the t5735.
When I have two monitors connected, why does one screen move around with the mouse?	This occurs on one of the monitors when a high resolution is selected that the smaller monitor can not handle. The smaller monitor has the same desktop size but does not display the whole screen, as such the screen pans with the movement of the mouse to allow viewing of all parts of the desktop.
Why do I get an error message when I press F1 or click on help in a window?	The GNOME-user-guide was not installed by default to save space. The administrator can install this package, if it is a requirement, from the Debian repositories.
Why don't my internal speakers turn off when I insert a jack into the front audio plug?	This behavior is by design to allow simultaneous audio output from both devices, which may be playing different content. To disable the internal speakers, open the GNOME ALSA Mixer (click Application > Sound & Video > Gnome ALSA Mixer), check Mute under Front to disable the internal speaker, and check Headphone to enable the front jack.
Why does my image get corrupted after FTP update is complete?	The t5735 does not support FTP image updates.

General

Question	Answer
Are there any hot keys?	Yes, see the following: <ul style="list-style-type: none"> • Ctrl+Alt+F1 to Ctrl+Alt+F6: Starts the different gettys, which can be disabled if unused by editing <code>/etc/inittab</code>. • Ctrl+Alt+F7: Default X server. • Ctrl+Alt+F8: Syslog (configure with <code>/etc/syslog.conf</code>). • Ctrl+Alt+F9: Default first XDM session. • Ctrl+Alt+Backspace: Logs off the current session and displays the login dialog. If the client is set to auto logon, the auto logon completes. • Ctrl+Alt+Left/Right: Switch to left/right workspace. • Alt+Tab: Switches the active application focus.

Question	Answer
	<ul style="list-style-type: none"> • Alt+F2: Show the run application dialog. • Alt+F4: Close a window. • Alt+F9: Minimize a window. • Alt+F10: Maximize a window. <p>For more information about hot keys, click Desktop > Preferences > Keyboard Shortcuts.</p>
The wrong characters display when I use the keyboard?	Click Desktop > Preferences > Keyboard . Click the Layouts tab and make sure the correct keyboard is selected.
How do I launch Connection Administrator?	<ol style="list-style-type: none"> 1. Click Desktop > Preferences > Sessions. 2. Add a command to <code>run /usr/bin/cman</code> on the Startup Programs tab.
How do I lock the desktop for users to resemble Kiosk mode?	<p>To configure the user's desktop settings:</p> <ol style="list-style-type: none"> 1. Log on as the user and delete any unwanted icons. <p>NOTE: If you do not want desktop icons and wallpaper, comment out or remove the line that starts <code>nautilus</code> on the Current Session tab of the Desktop > Preferences > Sessions tab.</p>
How can I install a flash player onto the t5735?	One possible way to install a flash player would be to append non-free to the end of the Debian repository entry in <code>/etc/apt/sources.list</code> and install the <code>flashplugin-nonfree</code> package, if you agree with the license terms.
How can I install Sun Java onto the t5735?	One possible way to install Sun Java would be to install the <code>sun-java5-jre</code> package or the latest package from http://www.backports.org .
How do I disable the disconnect button in HP Connection Administrator?	Set <code>ALLOW_DISCONNECT=FALSE</code> in <code>/etc/hpoptions</code> .

Manageability

Question	Answer
Are there any updates necessary for Altiris Deployment Server to work on an HP Compaq Linux thin client?	Yes. There is a hot fix available from Altiris which includes updates to the imaging process and the DOS agent <code>Bootwork.exe</code> . This hot fix includes a sample script that allows capture and deployment of images using <code>Rdeploy.exe</code> , as well as a new <code>Bootwork.exe</code> file that recognizes the bootloader in the image. This hot fix is available from the Altiris Web site support page.
What are the steps to capture and deploy an image on an HP Compaq Linux thin client?	The thin client supports the Linux version of the Altiris Remote Management Client. Altiris management software allows you to remotely capture and deploy Linux images. You can use the Altiris <code>Rdeploy</code> tool, a text-base utility, to perform this function.
	Capturing an Image:

Question	Answer
	<p data-bbox="852 222 1267 249"><i>HP Compaq Thin Client Actions (Required)</i></p> <ol data-bbox="852 275 1350 327" style="list-style-type: none"> 1. Create an Altiris script to run <code>usr/share/hp/hpbootorder nuh</code>. <p data-bbox="852 359 874 380">or</p> <ol data-bbox="852 407 1417 737" style="list-style-type: none"> 1. Reboot the client and launch the F10 System Configuration Setup Screen. 2. Select the Advanced BIOS Features option and press Enter. 3. Select the First Boot Device option and press Enter. 4. Select the Network option and press Enter. 5. Press F10 to save the configuration. 6. Press Enter to save and exit. <p data-bbox="852 762 1262 789"><i>Altiris Deployment Server Console Actions</i></p> <ol data-bbox="852 814 1441 1430" style="list-style-type: none"> 1. Double-click the Deployment Server Console icon from the desktop to open the Deployment Server Console. 2. Right-click on the lower left window and select New Job. 3. In the empty field, type <code>Image Capture</code> and press Enter. 4. From the upper right window, click Add. 5. From the drop-down menu, select Run Script. 6. In the Run this Script window, type the following command: <code>rdeployt -mu -raw -f.\images \test.img</code> <p data-bbox="903 1251 1406 1304">NOTE: <code>test.img</code> is used for this example. You may select any name for the .img file.</p> <ol data-bbox="852 1329 1422 1430" style="list-style-type: none"> 7. Select the DOS radio button from In which OS would you like to run this script? 8. Click Finish. <p data-bbox="852 1455 1441 1507">You can drag and drop this job to any Linux unit to capture its image.</p>
<p data-bbox="252 1528 635 1556">How is an image deployed using Altiris?</p>	<p data-bbox="852 1528 1441 1556">An image can be deployed by performing the following steps:</p> <p data-bbox="852 1581 1267 1608"><i>HP Compaq Thin Client Actions (Required)</i></p> <ol data-bbox="852 1633 1433 1686" style="list-style-type: none"> 1. Create an Altiris script to run <code>/usr/share/hp/hpbootorder nuh</code>. <p data-bbox="852 1707 874 1728">or</p> <ol data-bbox="852 1755 1433 1885" style="list-style-type: none"> 1. Reboot the client and launch the F10 System Configuration Setup Screen. 2. Select the Advanced BIOS Features option and press Enter.

Question	Answer
	<ol style="list-style-type: none"> 3. Select the First Boot Device option and press Enter. 4. Press F10 to save your configuration. 5. Press Enter to save and exit. <p><i>Altiris Deployment Server Console Actions</i></p> <ol style="list-style-type: none"> 1. Double-click the Deployment Server Console icon from the desktop to open the Deployment Server Console. 2. Right-click the lower left window and select New Job. 3. In the empty field, type <code>Image Deployment</code> and press Enter. 4. From the upper right window, click Add. 5. From the drop-down menu, select Run Script. 6. From the Run this Script window, type the following command: <code>rdeployt -md -raw -f.\images \test.img</code> <p>NOTE: <code>test.img</code> is used for this example. You may select any name for the <code>.img</code> file.</p> <ol style="list-style-type: none"> 7. Select the DOS radio button from In which OS would you like to run this script? 8. Click Finish. 9. To deploy an image, you can drag and drop this job to any HP Compaq Linux thin client.
<p>How can a factory image be restored locally?</p>	<p>A factory image can be restored locally using USB drive key or USB CD-ROM. Instructions for this procedure are available on the HP Compaq Thin Client Linux Image SoftPaq.</p>
<p>Can you capture and deploy settings separately from an image?</p>	<p>Yes. HP has developed custom scripts for Altiris that capture system settings and defined HP Connection Administrator connections from a source HP Compaq Linux thin client system through the Altiris deployment console. You can then deploy these captured system settings and connections out to a target HP Compaq Linux thin client system through the Altiris deployment console. For more information, see the white paper entitled <i>Altiris Manageability Scripts for HP Compaq Linux Thin Clients</i> at http://h20000.www2.hp.com/bc/docs/support/SupportManual/c00448511/c00448511.pdf.</p>
<p>Are there other management methods available from HP to manage HP Linux thin clients?</p>	<p>Yes, you may update images using new HP FTP image update and DHCP image update for HP Linux thin clients. For more information, see the white paper entitled, <i>FTP/DHCP Image Update for HP Linux Thin Clients</i> available on the http://www.hp.com product support site.</p>

7 Troubleshooting

Altiris

ISSUE

Altiris fails to restore my Debian image from a USB storage device.

SOLUTION

This issue occurs with Altiris versions prior to 6.8.177. The issue does not occur with Altiris 6.8.177 or higher. Update to a more recent version of Altiris.

HP Connection Administrator

ISSUE

Launching a connection changes the connection state to **active** then immediately back to **not connected** without establishing a connection.

SOLUTION

There can be a variety of reasons for this behavior. If the connection is set to ping first and the host name cannot be resolved, the target is behind a firewall or unable to successfully ping the target. As a workaround, disable **Ping first** under **Advanced** settings for the connection. As a diagnostic step, try pinging the host from a console.

Citrix ICA

ISSUE

After connecting to Adobe Acrobat as a Published Application and then shutting down the connection, the Adobe process does not properly terminate and will not allow you to relaunch an Adobe session.

SOLUTION

HP Connection Administrator is designed to prevent multiple instances of the same connection to run. To resolve this issue, update to a newer version of Adobe or contact Citrix for an alternative solution.

ISSUE

The Audio input feature is grayed out in Citrix ICA client and the microphone input does not work even with this feature enabled in HP Connection Administrator.

SOLUTION

When there is no existing `/etc/.hpconman/wfclient.ini`, `cman` uses the one created by `wfcmgr`, but there is an entry missing from the default `wfclient.ini` that is only created after you enable it through `wfcmgr`. If you have already run `cman`, you need to remove the version without `AllowAudioInput=True` and enable audio in `wfcmgr` so that `cman` will create a new version with the correct value.

ISSUE

USB storage devices that are automatically mounted and then mapped through an ICA connection with enabled read and write options fail to save, edit or delete files on the USB device.

SOLUTION

One workaround for this Citrix ICA issue is to change `/etc/fstab` and `/etc/udev/rules.d/50-pmount.hal` to `umask=000`. However, you should evaluate the security implications of this workaround in your specific environment.

rdesktop

ISSUE

You add a `rdesktop` connection with the default settings, and then change the video size to 200 percent or to full screen on Media Player, and no video displays.

SOLUTION

1. In HP Connection Administrator, select the connection, and then click **Edit**.
2. Click the Experience tab.
3. Clear **Bitmap caching** and **Use persistent bitmap caching**.

Iceweasel

ISSUE

Iceweasel inside HP Connection Administrator is not recognizing the proxy settings from the desktop version of Iceweasel.

SOLUTION

If behind a firewall, disable **ping first**, because most firewalls block ping.

ISSUE

When **Auto** is enabled in HP Connection Administrator for an Iceweasel connection with two Iceweasel secondary connections, the error **Iceweasel is already running , but it is not responding** message is displayed.

SOLUTION

To open new Iceweasel windows, you must first close the existing Iceweasel process or restart the system. This is a known Iceweasel issue for the shipping version. Please see http://kb.mozillazine.org/Profile_in_use for more information.

ISSUE

System intermittently hangs while running Iceweasel 2.x.

SOLUTION

This occurs because the flash file system has no available space, which may be caused by the Iceweasel 2.x list of suspected forgery sites that are downloaded to the client by default. Try disabling this feature by clearing the **Tell me if the site I'm visiting is a suspected forgery** check box under **Iceweasel 2.x > Tools > Security**. If you install a version of Iceweasel that you did not obtain from HP, you may also want to run the `/usr/share/hp/Icweasel tweaks` script as root from an Xterm or console to reduce unnecessary writes to the flash disk.

XDM

ISSUE

You cannot run an X application to a local machine when you Telnet to a remote XDM.

SOLUTION

The default configuration disables this functionality because of security concerns. You can enable by removing **-nolisten TCP** from `/etc/X11/wdm/Xservers` and restarting the X server.

ISSUE

Keyboard is dead/locks up when VT is set between 1 and 6 in an XDM connection.

SOLUTION

VTs 1 through 6 are reserved as additional gettys by default. Press the power button to shutdown, then either select a different VT or modify `/etc/inittab` and comment out the line that creates the getty you would like to use. Reboot for the changes to take effect.

Kiosk

ISSUE

When you shut down or reboot while in Kiosk mode, you get a blank, blue screen and no connection.

SOLUTION

This occurs at logout when a non-root user is in Kiosk mode with no auto-connection and the user was not granted rights from the administrator to reboot or shut down the system.

Printing

ISSUE

You cannot print a large job to local printers in rdesktop sessions.

SOLUTION

This issue may occur if a large volume of documents or an individually large document is sent to the local printer. Try to send large documents to a printer that is not connected locally to the thin client. If you want to print multiple documents, allow the print queue to clear before submitting the documents.

ISSUE

You cannot print large jobs to local printers from an ICA session.

SOLUTION

The thin client has limited space available for the print spooler. This issue may occur if a large volume of documents or an individually large document is sent to the local printer. Try to send large documents to a printer that is not connected locally to the thin client. If you want to print multiple documents, allow the print queue to clear before submitting the documents.

ISSUE

You set up a new printer using Printer Manager. When you test the printer, you receive an error message "Printer Test Failed!!!"

SOLUTION

The entry in the **Printer Name** field cannot contain spaces. Remove any spaces from the entry in this field. You can use spaces for the description.

ELO Touch Monitor

ISSUE

While using an ELO Touch screen monitor, you log out by clicking **Start > Window Manager > Log Out**, and the ELO Touch monitor stops accepting touch commands. After a power cycle the monitor functions correctly.

SOLUTION

Log out by pressing the **Ctrl+Alt+Backspace** keys.

USB

ISSUE

Automount only supports the first partition of an external drive.

SOLUTION

Mount the other partitions manually or add entries for them to `/etc/fstab`.

Network

ISSUE

Attempts to ping a host result in message "unknown host" error in a mixed Windows and Linux environment.

SOLUTION

One possible solution is to install the winbind package from the Debian repositories using Synaptic or Aptitude and configure for the specific environment. After installing it, edit from a command line `/etc/nsswitch.conf` and add the word `wins` to the end of the `hosts:` line.

ISSUE

Attempts to ping the client result in message “unknown host” error.

SOLUTION

Ensure the host name is correct and includes a fully qualified domain name (FQDN) for the applicable domain where the thin client is located. You may also need to add the FQDN in `/etc/hosts`.

Modify `/etc/dhcp3/dhclient.conf` and enter the option `send host-name [FQDN]`.

Keyboard

ISSUE

The local keyboard settings do not match the actual characters on my keyboard.

SOLUTION

The characters used in the keyboard mappings are defined by the `xserver` provided by the Debian repository and can be modified either by changing the source files in `/etc/X11/xkb` or by running the `xmodmap` command from the users `~/.xsession` script. This latter method is used by the `hptc-keyboards` package available in the HP repository to customize the international keyboard provided by HP.

Multimedia

ISSUE

Attempting to play video with the default install of the `mplayer` package from <http://www.debian-multimedia.org> causes this message to appear: **Error opening/initializing the selected video_out (-vo) device.**

SOLUTION

Open the **Preferences** dialog, select the **Video** tab, and select a different driver. The `xv` or `x11` drivers seem to provide the best performance.

Miscellaneous

ISSUE

The system intermittently hangs.

SOLUTION

Check available flash space with the command `df -h` from an `xterm` or console. You may need to delete unnecessary files. One possible alternative is to install `localepurge` from the Debian repository or delete documentation files by running the `/usr/share/hp/cleandocs` script from an `xterm` console.

8 Useful information

See the following Web sites for information relevant to the Linux thin client.

Site	URL
Linux Online	http://www.linux.org
Linux.com	http://www.linux.com
Linux on Laptops	http://www.linux-laptop.net
Linux Security	http://www.linuxsecurity.com
Linux Journal	http://www.linuxjournal.com
Linux Gazette	http://www.linuxgazette.com
HP white papers. To search for white papers, type your country, product name, and then click Manuals .	http://www.hp.com/support/
Debian	http://debian.org
Debian — Wikipedia definition	http://en.wikipedia.org/wiki/Debian
Debian backports	http://backports.org
Debian GNU/Linux System Administration Resources	http://debian-administration.org
Debian Linux Kernel Handbook	http://kernel-handbook.alioth.debian.org
Debian Security Information	http://www.us.debian.org/security
Debian Help	http://www.debianhelp.co.uk
Getting Help with XFree86	http://www.xfree86.org/sos
Synaptic Package Manager — Wikipedia definition	http://en.wikipedia.org/wiki/Synaptic_Package_Manager
The Linux Documentation Project	http://ltdp.org
Debian Multimedia	http://www.debian-multimedia.org
GNOME	http://www.gnome.org/
GNOME Desktop User Guide	http://library.gnome.org/users/user-guide/stable/

Index

- A**
 - add-ons 58
 - adding
 - connections 36
 - network printer 24
 - parallel printer 22
 - Samba printer 25
 - USB printer 23
 - Advanced Configuration utility 46
 - ALSA Mixer 26
 - ALSA Web site 26
 - Altiris
 - issue 66
 - Web site 33
 - white paper 65
 - applications
 - menu 3
 - submenu 3
 - Aptitude 1
 - assigning connections to users 49
 - Auto box 48
 - automatic connections 49
- B**
 - background, desktop 16
 - BackingStore 44
 - BIOS 12
 - BIOS/time synchronization 61
 - bitmap caching 44
 - boot order 61
 - Broadcast 45
 - build number 60
 - Buttons tab 18
- C**
 - Capture, HP ThinState 28
 - changing boot order 61
 - Citrix
 - connection view 57
 - global settings 52
 - hot keys 53
 - ICA 56
 - ICA connection 37
 - ICA issues 66
 - options Web site 39
 - preferences 57
 - servers 52
 - Clients for UNIX Administrator's Guide Web site 56
 - clock 15, 60
 - code, Linux Open Source 59
 - colors, desktop 17
 - COM ports, Citrix 54
 - computer icon 2
 - configuring
 - clock 15
 - connections 47, 50
 - connections as primary, secondary, automatic 49
 - date/time 14, 61
 - keyboard 18
 - login window 26
 - mouse settings 18
 - network settings 19
 - printers 22
 - sound 26
 - time 14, 61
 - Connection Administrator
 - features 35
 - issue 66
 - connections
 - adding, editing, deleting 36
 - assigning to users 49
 - Citrix ICA 37
 - configuring 50
 - Iceweasel 39
 - other 45
 - rdesktop 40
 - types 12, 36
 - view, Citrix 57
 - XDM 44
 - CPU 12
 - custom image requests 58
- D**
 - date/time 14, 61
 - Debian 1
 - Debian Web sites 71
 - default
 - password 1
 - user account 1
 - deleting connections 36
 - Deploy, HP ThinState 30
 - desktop
 - background 16
 - colors 17
 - icons 2
 - menu 6
 - preferences 16
 - submenu 7
 - wallpaper 16
 - DHCP Scope Options Web site 34
 - DNS tab 20
 - drive mapping 53
- E**
 - editing, connections 36
 - ELO Touch Monitor issue 69
 - error message, F1 or Help 62
- F**
 - F1 error message 62
 - FAQs
 - general 62
 - Linux operating system 60
 - manageability 63

- system administration 60
- system management 60
- FTP update 33
- FTP/DHCP white paper Web site 65

G

- general FAQs 62
- General tab 20
- Global UI 51

H

- hardware warranty 58
- Help error message 62
- hot keys
 - Citrix 53
 - list 62
- HP Connection Administrator 35
- HP Connection Administrator issue 66
- HP support Web site 58
- HP ThinState
 - Capture 28
 - Deploy 30

I

- ICA client settings 57
- ICA preferences 57
- Iceweasel
 - connection 39
 - issues 67
 - Web site 67
- image
 - location 60
 - updates 58
 - version 60
- image corrupted after FTP Update 62
- image updates, add-ons Web site 58
- Imaging Tool Web site 33
- installing
 - packages 10
 - software 10
- Interfaces tab 19
- interfaces, network 19
- internet, Iceweasel issues 67

J

- Jobs tab 26

K

- keyboard
 - issue 70
 - language 52
- Keymap 45
- kiosk mode
 - Global UI in 51
 - issue 68
- kiosk, setting up 61

L

- launching Synaptic 10
- Linux
 - open source code 59
 - open source code Web site 59
 - operating system FAQs 60
 - Web sites 71
- login window 26

M

- manageability FAQs 63
- memory 12
- menus
 - applications 3
 - desktop 6
 - places 5
- mixer 26
- monitor
 - resolution 62
- Motion tab 18
- mouse settings, configuring 18
- multimedia
 - issue 70
 - Web site 70

N

- network
 - interfaces 19
 - issues 69
 - printer 24
- Network Manager 19

O

- open source code 59
- Other connection 45

P

- packages 9
- parallel printer 22
- password, default 1

- Persistent box 48
- persistent connection 51
- Ping First 47
- places menu 5
- PNAgent 57
- Pointer tab 18
- preference tool 14
- preferences
 - Citrix 57
 - desktop 16
 - ICA 57
 - keyboard language 52
- primary connection 48, 49
- print jobs 26
- printers 22
- printing issues 68
- Prompt box 48
- protocol compression 44

R

- rdesktop
 - connection 40
 - issue 67
 - Web site 44
- resolution, monitor 62

S

- Samba printer 25
- secondary connections 49
- settings
 - Citrix global 52
 - ICA client 57
- software
 - installation 10
 - warranty 58
- sound 26
- speakers, internal 62
- submenu
 - applications 3
 - desktop 7
- Sun Java Web site 63
- support 58
- Synaptic 9
- Synaptic help file Web site 11
- synchronize BIOS/system time 61
- system
 - administration FAQs 60
 - hardware clock 15, 60
 - information 12

- management FAQs 60
- tools 14

T

- t5735 options, add-on, package updates 9

- tab

- Buttons 18
- DNS 20
- General 20
- Interfaces 19
- Motion 18
- Pointer 18
- Print 26

- taskbar 3

- TeemTalk 11

- TeemTalk user guide 12

- thin client image 1

- ThinState

- Capture 28
- Deploy 30

- time 14, 61

- trash icon 2

- Troubleshooting 66

- troubleshooting

- Altiris 66
- Citrix 66
- ELO Touch Monitor 69
- HP Connection Administrator 66
- ICA 66
- Iceweasel 67
- keyboard 70
- kiosk mode 68
- miscellaneous 70
- multimedia 70
- network 69
- printing 68
- rdesktop 67
- USB 69
- XDM 68

U

- updating images, FTP 33, 62

- URLs 71

- USB

- issue 69
- printer 23

- user's home icon 2

V

- version 12

- VT 45

W

- wallpaper, desktop 16

- warranty

- hardware 58
- software 58

- Web site

- ALSA 26
- Altiris 33
- Altiris white paper 65
- Citrix options 39
- Clients for UNIX Administrator's Guide 56
- Debian multimedia 70
- DHCP Scope Options 34
- FTP/DHCP white paper 65
- HP support 58
- Iceweasel 67
- image updates, add-ons 58
- Imaging Tool 33
- Linux open source code 59
- rdesktop 44
- Sun Java 63
- Synaptic help file 11
- t5735 options, add-on, package updates 9
- TeemTalk user guide 12

- Web sites, list 71

- wrong character display 63

X

- XDM

- connection 44
- issues 68