

# HP Compaq Business Desktop dc7800 Software Overview

## September 2007



Abstract .....	2
Definition of Terms .....	2
Operating System Support.....	3
Microsoft Windows XP.....	4
Microsoft Windows Vista .....	7
Microsoft Windows 2000 .....	12
Microsoft Windows NT.....	12
ROM BIOS Information.....	12
Additional BIOS Highlighted Features .....	13
Common Image Considerations.....	13
Software Image Development on dc7800 Stable Products .....	14
Software delivery.....	14
HP Worldwide Web site and download facility .....	14
HP <i>Restore Plus!</i> CD.....	14
Software enhancements.....	15
HP Client Management Solutions.....	15
Grahpics .....	15
Audio .....	15
HP Client Management Interface .....	16
User manuals.....	16
General Software Image Contents .....	17
Microsoft Windows Operating System Software .....	17
Hardware/OEM specific drivers and files .....	17
HP Specific Applications .....	18
Other typically preinstalled applications.....	18
Examining the Image Contents .....	19
Examining the INFO.BOM file (OS-independent).....	19
Preloaded Components .....	20
Additional Software .....	22
Frequently asked questions .....	23
For more information.....	25

# Abstract

The purpose of this white paper is to present both an overview of the preinstalled software operating system support along with a brief description of major software components and features. This white paper covers the new HP Compaq Business Desktop dc7800 models, along with a comparison to HP Compaq Business Desktop dc7700 and the HP Compaq Business Desktop dc7600.

## Definition of Terms

**Preinstalled applications** – Applications that are installed in the factory and are ready to use immediately.

**Preloaded applications** – Applications from HP that are loaded on the hard drive in an uninstalled state; the user must install the application manually before it can be used. The HP Software Setup application provides a simple interface to access the uninstalled applications.

**Software Setup** –An application provided by HP that makes it easier to locate and install software that is preloaded (not preinstalled) on the hard drive.

**Product family** – A set of form-factor types within a numerically defined series. For example, the HP Compaq Business Desktop dc7800 Series consists of the HP Compaq dc7800 Convertible Minitower Business PC, HP Compaq dc7800 Small Form Factor Business PC, and the HP Compaq dc7800 Ultra-slim Desktop Business PC.

**QFE** – Often referred as QFE's or quick fixes, Microsoft calls them Quick Fix Engineering Software Updates. The QFE's are important software updates provided by Microsoft and many are included in operating system images provided by HP.

**Restore Plus! CD** – System recovery media provided by HP as ISO files in a partition on HDD. Users can burn these files onto a set of CD's that allow a user to re-image the system back to its factory state.

**HP Backup & Recovery Manager** – application software that facilitates creation of the *Restore Plus!* CD sets as well as provides full disaster recovery and backup/restore functionality.

**Standalone service packs** – A large collection of QFE's from Microsoft that are grouped together to provide a significant update to an existing Microsoft operating system.

**Sysprep** (System preparation tool)—A Microsoft tool that prepares the operating system for imaging. This tool must be run before imaging a system and then deploying that image. Sysprep.exe can be found on your operating system CD obtained from either HP or Microsoft. Sysprep, as well as other useful documentation and tools, is contained in the named **deploy.cab**, located in the **support\tools** directory.

# Operating System Support

Operating systems preinstalled<sup>1</sup> with the dc7800 series include one of the following:

- Microsoft Windows® XP Professional Edition with Service Pack 2
- Microsoft Windows Vista Home Basic Edition
- Microsoft Windows Vista Business Edition (32 bit)
- Microsoft Windows Vista Business Edition (64 bit)

Operating systems supported on the dc7800 series include one of the following:

- Microsoft Windows® XP Professional Edition with Service Pack 2
- Microsoft Windows Vista Home Basic Edition
- Microsoft Windows Vista Business Edition (32 bit)
- Microsoft Windows Vista Business Edition (64 bit)
- Microsoft Windows Vista Enterprise Edition (32 bit)
- Microsoft Windows Vista Enterprise Edition (64 bit)
- Microsoft Windows Vista Ultimate Edition (32 bit)
- Microsoft Windows Vista Ultimate Edition (64 bit)

Operating systems with Limited Supported<sup>2</sup> for the dc7800 series include:

- Windows 2000 with Service Pack 4 (integrated components only)

Operating systems NOT supported but have been tested and documented<sup>3</sup> for the dc7800 series include:

- None

Operating systems NOT supported<sup>4</sup> (not a complete list) by HP for the dc7800 series include:

- IBM OS/2
- Windows 95
- Windows Me
- Windows NT
- Windows 98SE

Operating systems certified<sup>5</sup> for the dc7800 series include:

- Red Hat Enterprise Workstation 3.0 (post launch availability)
- SUSE Linux Desktop (post launch availability)
- Novell Netware client (post launch availability)

---

<sup>1</sup> Pre-installed support is defined as follows: 1) Operating System offered for sale pre-installed on system, 2) drivers fully WHQL certified, and 3) drivers posted to WEB (www.hp.com) at product announcement.

<sup>2</sup> Limited Support is defined as follows: 1) Operating System is not offered pre-installed, 2) critical sub-system drivers are available on web/CD within 30 days of product announcement (critical sub-systems include NIC, audio, video.)

<sup>3</sup> Test & Document Support is defined as follows: 1) OS is loaded and tested in a "will it run criteria," 2) no driver development, 3) problems are documented, 4) no integration testing and 5) no support provided by HP.

<sup>4</sup> Not Supported is defined as follows: 1) No loading of Operating System, 2) no testing and 3) no issue documentation.

<sup>5</sup> Certified is defined as follows: 1) Hardware is provided to vendor for testing and certification, 2) all drivers are OS vendor dependant, no support provided by HP, and 3) certification is posted to vendor Web site.

## Microsoft Windows XP

The dc7800 series will launch with a choice of Microsoft Windows XP Professional with Service Pack 2 and several versions of Windows Vista preinstalled.

Below is a table highlighting software components added to the dc7800 Windows XP Professional image compared to previous generation products and can be used by IT Professionals as a guide to note driver changes within the Windows XP operating system.

**Table 1 Windows XP Software Component Version Comparison**

	dc7800	dc7700	dc7600
Name	Version	Version	Version
<b>ROM BIOS</b>			
ROM Firmware for dc7600	-	-	786D1
ROM BIOS for dc7700		786E1 1.05	-
ROM BIOS for dc7800	3.0.1.1104	-	-
<b>Audio Drivers</b>			
Realtek HD Audio Driver	-	5.10.0.5275	5.10.0.5121
ADI Audio Driver	10.1.5460	-	-
<b>Communications Drivers</b>			
Agere Systems PCI Soft Modem	2.1.65	2.1.65	2.1.47
Broadcom Drivers for Windows XP and 2000	-	9.52.0.0	8.27.1
HP WLAN 802.11a-b-g PCI WL500	-	-	-
Intel(R) PRO/1000 MT Drivers for Windows XP	9.8.20.0	9.4.21.0	6.4.16.1
Belkin Wireless NIC Driver	4.1.2.146	-	4.1.2.71
Broadcom 10/100/1000 Drivers	4.100.15.5	-	-
<b>Graphics Drivers</b>			
ATI Radeon Graphics Driver PCI Express	8.261.4.0	8.261.4.0	8.11.5-050405a-022
Intel Video Graphics	6.14.10.4837	-	-
Intel(R) 965G Express Chipset Family	-	-	6.14.10.4299
Intel(R) Broadwater XPDM Graphics	-	6.14.10.4642	-
nVidia Graphics Drivers - Windows XP	6.14.11.6006	8.4.7.8	-
nVidia LPG Graphics Drivers - Windows XP	-	-	61.88
nVidia NVS280 PCI Registry Patch	-	-	1.01
<b>Input Drivers</b>			
Modular Access Keyboard Software	-	-	5
HP USB Smartcard Keyboard Adapter	4.30.0.1	4.30.0.1	-

OS Support / Microsoft QFE's			
Microsoft DirectX 9.0b		-	1.00 A
Q815304 - Microsoft Windows Fix for S4 function broken on SP2	1.00	1.00	
Microsoft Explorer Hang during PnP fix - KB314405	-	-	1.00
Microsoft HTML Help Topics fix - Q811630	-	-	1.00
Microsoft IE6 SP1 November 03 Cumulative patch - Q824145	-	-	1.00
Microsoft Messenger Vulnerability fix - Q828035	-	-	1.00
Microsoft Windows DMA Downshift Fix	-	-	1.00
Microsoft Windows XP Service Pack 1 Hot fixes	-	-	1.00
Monitor INF and ICM Files	-	-	1.20
Multiple Fixes In RPC - Q824146	-	-	1.00
Chinese Quad Byte Support	-	2.00 a 2	2.00 A 1
Dot Net for Windows XP Pro	2.00	1.10	1.10
Intel Chipset Support for Windows	-	-	6.00
NTFS Security Update	-	-	1.02
Q828028 Microsoft Vulnerability within ASN fix	-	-	1.00
Q828741_Cumulative Update Vulnerability within RPC_DCOM fix	-	-	1.00
Security Update Vulnerability within Microsoft Windows fix_Q835732	-	-	1.00
Set Video Refresh rate.	1.2.1.3	1.2.1.3	1.2.1.3
Sun Java	1.6.0_01	1.4.2_03	1.4.2_03
Windows XP MUI Pack - BULGARIAN	1.00 A (XP Pro only)	1.00 A (XP Pro only)	1.00 A (XP Pro only)
Windows XP MUI Pack - CROATIAN	1.00 A (XP Pro only)	1.00 A (XP Pro only)	1.00 A (XP Pro only)
Windows XP MUI Pack - ESTONIAN	1.00 A (XP Pro only)	1.00 A (XP Pro only)	1.00 A (XP Pro only)
Windows XP MUI Pack - LATVIAN	1.00 A (XP Pro only)	1.00 A (XP Pro only)	1.00 A (XP Pro only)
Windows XP MUI Pack - LITHUANIAN	1.00 A (XP Pro only)	1.00 A (XP Pro only)	1.00 A (XP Pro only)
Windows XP MUI Pack - ROMANIAN	1.00 A (XP Pro only)	1.00 A (XP Pro only)	1.00 A (XP Pro only)
Windows XP MUI Pack - SLOVAKIAN	1.00 A (XP Pro only)	1.00 A (XP Pro only)	1.00 A (XP Pro only)
Windows XP MUI Pack - SLOVENIAN	1.00 A (XP Pro only)	1.00 A (XP Pro only)	1.00 A (XP Pro only)
Windows XP MUI Pack - THAI	1.00 A (XP Pro only)	1.00 A (XP Pro only)	1.00 A (XP Pro only)
Q885222 Performance of 1394 devices may decrease after installing Windows XP SP2	1.00	1.00	-
3 mode floppy driver for Windows 2000/XP		1.00	-
Q886199 – Fix for RDC Audio redirect failure	1.00	1.00	-
Q888111 - Updated UAA audio package for XP SP2	1.00	1.00	-
Q889673 DEP enabled XP2 system may fail resuming from sleep	1.00	1.00	-
Q895246 – Fix for DhcpRequestParams function broken on SP2	1.00	1.00	-
Q9909095 - System occasionally does not hibernate	1.00	1.00	-

Q923232 Microsoft Write Combining fix for XP SP2	-	1.00	-
Intel HECI Driver	3.0.30.1086	-	-
Intel LMS_SOL	5.4.0.1065	-	-
<b>Preinstalled Applications</b>			
Intel RAID Driver and Software Support for Windows XP (ICH8)	6.00	-	-
Intel Chipset Support for Windows XP (ICH9)	7.5.0.1017	-	-
Adobe Acrobat Reader	-	7.00	6.00
Application Installer	-	2.00	2.00
Help Support Center	4.2.00101	4.2.00101	4.00.0026 H 3
HP Backup & Recovery Manager	2.4L	2.3i	-
HP Management Agent	2.20.1017		
HP ProtectTools Embedded Security Module 1.2	-	4.5 SP1	-
HP BIOS Configuration Manager for ProtectTools	2.00	2.00	-
Credential Manager for HP ProtectTools	2.50	1.5.0.631.40.4_RC6	-
HP ProtectTools Security Manager	2.00,D,2	2.00,D,3	2.00
HP ProtectTools Java Card	A, 7		
Drive Encryption for ProtectTools	1.00		
HPES Security Module 1.2	1.90		
Intervideo WinDVD Software	5.0.11.1166	5.0.11.1166	-
Roxio CinePlayer	-	-	2.2A
PDF Complete	3.0.75	3.0.33	3.0.33
Safety and Comfort Guide - Desktop	1.00	3.100.3.1 D	3.100.3.1 D
Verdiem Surveyor Power Management Agent	4.0.1.350	-	-
Symantec Antivirus	10.00	10.00	-
Norton Antivirus 2005	-	-	2005
<b>Preloaded Applications</b>			
Altiris Deployment Agent for Windows- Preload	6.8.282	6.50	6.10
Altiris Local Recovery	-	-	6.1.1592.0
<b>CD Delivered Applications</b>			
Roxio Easy CD Creator	9.0	-	-
Dantz Retrospect	-	-	7.0.272
Intervideo WinDVD Software	5.0.11.1166		-
Roxio DigitalMedia Plus	7.2.1	7.2.1	7.2 A
	-		
<b>Web Delivered Applications</b>			
HP Client Manager Software	hp.com/go/easy deploy	hp.com/go/easy deploy	hp.com/go/easy deploy
System Software Manager (SSM)	hp.com/go/ssm	hp.com/go/ssm	hp.com/go/ssm

## Microsoft Windows Vista

The dc7800 series will launch with a choice of Microsoft Windows XP Professional with Service Pack 2 and several versions of Windows Vista preinstalled.

Below is a table highlighting software components added to the dc7800 Windows Vista image compared to previous generation products and can be used by IT Professionals as a guide to note driver changes within the Windows Vista operating system.

**Table 2 Windows Vista Software Component Versions**

	dc7800	
	Vista Business 32 bit	Vista Business 64 bit
<b>ROM BIOS</b>		
ROM BIOS	3.0.1.1104	3.0.1.1104
<b>AUDIO</b>		
ADI Audio Driver	6.10.5440	6.10.5440
<b>COMMUNICATIONS DRIVERS</b>		
Agere Systems PCI Soft Modem	2.1.77.0	2.1.77.0
Belkin Wireless NIC Driver	7.2.0.215	7.2.0.215
Intel PRO/1000 Drivers	9.8.20.0	9.8.20.0
Broadcom 10/100/1000 Drivers	4.102.15.61	4.102.15.61
<b>GRAPHICS DRIVERS</b>		
ATI Radeon Graphics Driver	8.34.2.0	8.34.2.0
Intel Video Graphics	7.14.10.1283	7.14.10.1283
NVidia Graphics Driver	7.15.11.6006	7.15.11.6006
<b>INPUT DRIVERS</b>		
HP Modular USB Smartcard Keyboard Adapter	4.32.0.1	4.32.0.1
<b>OS SUPPORT</b>		
Dot Net for WinXP	2.00	2.00
Tech Support Phonebook	1.00	1.00
Set Video Refresh rate.	1.2.1.3	1.2.1.3
<b>MANAGEABILITY SOFTWARE</b>		
Intel RAID Driver and Software Support for Windows XP (ICH8)	7.5.0.1017	N/A
<b>PREINSTALLED APPLICATIONS</b>		
Help and Support Center	N/A	N/A
Intel Chipset Support for Windows XP (ICH9)	8.3.0.1013	8.3.0.1013
Intervideo WinDVD Software	5.0.11.1166	5.0.11.1166
MS Works	8.5	8.5
PDF Complete	3.0.84	3.0.84
Sun Java	1.6.0_01	1.6.0_01
Surveyor Power Management	4.0.1.350	N/A
Symantec Antivirus	10.2	10.2
HP Backup & Recovery Manager	4.3.4 rev H 016	4.3.4 rev H 016
<b>MANAGEMENT SOFTWARE</b>		
Altiris Deployment Solution Agent - Preload	6.8.282	6.8.282
Credential Manager for HP ProtectTools	2.5	2.5
Drive Encryption for ProtectTools	1.00	1.00
HP BIOS Configuration for ProtectTools	3.00	3.00
HP ProtectTools Security Manager	2.00, D,2	2.00, D,2

HP ProtectTools Java Card	N/A	N/A
HPES Security Module 1.2	N/A	N/A
Intel HECI Driver	3.0.30.1086	3.0.30.1086
Intel LMS_SOL	5.4.0.1065	5.4.0.1065
HP Management Agent	N/A	N/A
Safety and Comfort Guide - Desktop	1.00	1.00
<b>CD DELIVERED APPLICATIONS</b>		
Intervideo WinDVD Software	5.0.11.1166	5.0.11.1166
Symantec Antivirus	10.20	10.2
<b>WEB DELIVERED APPLICATIONS</b>		
HP Client Manager Software	hp.com/go/easydeploy	hp.com/easydeploy
System Software Manager (SSM)	hp.com/go/ssm	hp.com/go/ssm
<b>QFEs</b>		
Q929685_X32 HD Audio Disappears After Sleep On Windows Vista	1.00	
Q929913_X32 FPP Failure on Unattend.xml on Microsoft Windows Vista	1.00	
Q930193_X32 MSDTC causes sysprep fatal error On Microsoft Windows Vista	1.00	
Q930883_X32 Audio Control Panel Issue On Windows Vista	1.00	
Q931573_X32 Vista Activation Required On SLP2 on Microsoft Windows Vista	1.00	
Q931770_X32 Copy Process may Stop When Copying Over A Network On Windows Vista	1.00	
Q932814_X32 Chinese Simplified Graphics Driver Issue On Microsoft Windows Vista	1.00	
Q936003_X32 USB Device Not Working Correctly After Sleep Or Hibernation	1.00	
Q936686_X32 Microsoft Fix For Dual Core Processors Issue On Vista	1.00	
Q925902_X32 Vulnerabilities In GDI May Allow Remote Code Execution On Vista	1.00	
Q928089_X32 Slow Respond On Web Page Using IE 7 On Windows Vista	1.00	
Q929123_X32 Cumulative Security Update For Outlook Express_Windows Mail on Vista	1.00	
Q929399_X32 Subscription Music Issues On Vista With The Windows Media Format SDK	1.00	
Q929685_X32 HD Audio Disappears After Sleep On Windows Vista	1.00	
Q929735_X32 File Not Found Using Non-Gregorian Calendar Format On Vista	1.00	
Q929761_X32 Software Installation Fails Using Wusa With Quiet Option On Vista	1.00	
Q929762_X32 Error Msg Waking Vista Computer Tied to IEEE 1394 Device	1.00	
Q929763_X32 Version 5 Of Mongolian Baiti Font May Display Incorrectly In Windows	1.00	
Q929777_X32 Error Msg Installing Vista On Computer with more than 3GB RAM	1.00	
Q930163_X32 Issue Accessing VPN Server After switching Network Adapters On Vista	1.00	
Q930178_X32 Vulnerabilities In CSRSS May Allow Remote Code Execution On Vista	1.00	
Q930857_X32 Update For Windows Error Reporting In Windows Vista	1.00	
Q931099_X32 Issue In Windows defender On Vista	1.00	
Q931174_X32 Configures The Windows Customer Experience Program On Vista	1.00	
Q931213_X32 Vulnerability In Windows Vista Could allow Information Disclosure	1.00	
Q931573_X32 Vista Activation Required On SLP2 on Microsoft Windows Vista	1.00	
Q931621_X32 Update To Enable Access To External Storage	1.00	



Cards On Vista		
Q931836_X32 February 2007 Cumulative Time Zone Update On Microsoft Windows Vista	1.00	
Q932246_X32 March 2007 Windows Vista Application Compatibility Update	1.00	
Q933566_X32 Cumulative Security Update For Internet Explorer on Vista	1.00	
Q933928_X32 Update To Improve Product Activation And Validation Process On Vista	1.00	
Q935280_X32 July 2007 Windows Vista Application Compatibility Update	1.00	
Q935807_X32 Vulnerability In Vista Firewall Could Allow Information Disclosure	1.00	
Q936357_X32 A Microcode Reliability Update That Improves Systems That Use Intel	1.00	
Q936824_X32 Removal Features Do Not Work Correctly With An Apple iPod On Vista	1.00	
Q936825_X32 Availability Of The Windows Vista Secure Digital (SD) Rollup Package	1.00	
Q937077_X32 A High Def Device May Not Work After Hibernation Or Sleep On Vista	1.00	
Q929913_X64 FPP Failure on Unattend.xml on Microsoft Windows Vista		1.00
Q930193_X64 MSDTC causes sysprep fatal error On Microsoft Windows Vista		1.00
Q930883_X64 Audio Control Panel Issue On Windows Vista		1.00
Q931770_X64 Copy Process may Stop When Copying Over A Network On Windows Vista		1.00
Q932814_X64 Chinese Simplified Graphics Driver Issue On Microsoft Windows Vista		1.00
Q936003_X64 USB Device Not Working Correctly After Sleep Or Hibernation		1.00
Q936686_X64 Microsoft Fix For Dual Core Processors Issue On Vista		1.00
Q925902_X64 Vulnerabilities In GDI May Allow Remote Code Execution On Vista		1.00
Q928089_X64 Slow Respond On Web Page Using IE 7 On Windows Vista		1.00
Q929123_X64 Cumulative Security Update For Outlook Express_ Windows Mail on Vista		1.00
Q929399_X64 Subscription Music Issues On Vista With The Windows Media Format SDK		1.00
Q929685-HD Audio Disappears After Sleep On Windows X64 Vista		1.00
Q929735_X64 File Not Found Using Non-Gregorian Calendar Format On Vista		1.00
Q929761_X64 Software Installation Fails Using Wusa With Quiet Option On Vista		1.00
Q929762_X64 Error Msg Waking Vista Computer Tied to IEEE 1394 Device		1.00
Q929763_X64 Version 5 Of Mongolian Baiti Font May Display Incorrectly In Windows		1.00
Q929777_X64 Error Msg Installing Vista On Computer with more than 3GB RAM		1.00
Q930163_X64 Issue Accessing VPN Server After switching Network Adapters On Vista		1.00
Q930178_X64 Vulnerabilities In CSRSS May Allow Remote Code Execution On Vista		1.00
Q930857_X64 Update For Windows Error Reporting In Windows Vista		1.00
Q931099_X64 Issue In Windows defender On Vista		1.00
Q931174_X64 Configures The Windows Customer Experience Program On Vista		1.00
Q931213_X64 Vulnerability In Windows Vista Could allow Information Disclosure		1.00
Q931573_X64 Vista Activation Required On SLP2 on Microsoft Windows Vista		1.00
Q931621_X64 Update To Enable Access To External Storage Cards On Vista		1.00

Q931836_X64 February 2007 Cumulative Time Zone Update On Microsoft Windows Vista		1.00
Q932246_X64 March 2007 Windows Vista Application Compatibility Update		1.00
Q933566_X64 Cumulative Security Update For Internet Explorer on Vista		1.00
Q933928_X64 Update To Improve Product Activation And Validation Process On Vista		1.00
Q935280_X64 July 2007 Windows Vista Application Compatibility Update		1.00
Q935807_X64 Vulnerability In Vista Firewall Could Allow Information Disclosure		1.00
Q936357_X64 A Microcode Reliability Update That Improves Systems That Use Intel		1.00
Q936824_X64 Removal Features Do Not Work Correctly With An Apple iPod On Vista		1.00
Q936825_X64 Availability Of The Windows Vista Secure Digital (SD) Rollup Package		1.00
Q937077_X64 A High Def Device May Not Work After Hibernation Or Sleep On Vista		1.00

Tables 3 & 4 below summarize the software updates (Softpaqs) available for download from [www.hp.com/support](http://www.hp.com/support). These tables also contain information about application software (and related updates) for the dc7800 (some of this software is dependent on specific hardware configuration details.) Note that Softpaqs may be superseded by newer versions.

**Table 3 - dc7800 Softpaqs for Windows XP**

Name	Softpaq #	Version #
BIOS Configuration for HP ProtectTools	sp34800	3
Intel Chipset Support for Windows	SP36714	8.3.0.1013
ADI HD Audio Driver for Microsoft Windows XP	SP36626	5.10.1.5460
Agere Systems PCI Soft Modem	SP33438	2.1.65.0
Altiris Deployment Solution Agent - Preload for XP	SP35473	6.8.282
ATI Graphics Driver for Microsoft Windows 2000/XP	SP34267	8.261.4
Broadcom Bluetooth for Windows	SP36868	6.0.1.5400
Infineon TPM 1.2 Driver for Windows XP	SP35840	1.90.00.0
Intel Active Client Manager HECI Device	SP36370	3.0.30.1086
Intel Active Client Manager HECI Device	SP37019	3.0.30.1086
Intel Graphics Driver for Microsoft Windows 2000/XP	SP36604	6.14.10.4837
Intel PRO/1000 Drivers for Multi-OS	SP36743	9.8.20.0
Intel(R) AMT LMS_SOL for AMT 3.0	SP36371	5.4.0.1065
Intel(R) AMT LMS_SOL for AMT 3.0	SP37050	5.4.0.1065
LightScribe Driver Update	SP36866	1.10.13.1
Microsoft Windows XP Fix for No Video Issue When Exiting S3 on RDC (Q815304)	SP32340	1
Microsoft Windows XP Intel dual-core processor resume from standby (Q923232)	SP33682	1
Microsoft Windows XP SP2 DEP-enabled standby or hibernation issue (Q889673)	SP33680	1
Microsoft Windows XP SP2 February 2007 cumulative time zone update (Q931836)	SP35300	1
Microsoft Windows XP SP2 Fix for Issue with Calls to DhcpRequestParams (Q895246)	SP32388	1
Microsoft Windows XP SP2 Fix for Performance of 1394 Devices (Q885222)	SP32387	1
Microsoft Windows XP SP2 Fix for RDC Audio Redirect Failure (Q886199)	SP32385	1
Microsoft Windows XP SP2 System occasionally does not hibernate (Q909095)	SP33681	1
Microsoft Windows XP SP2 Universal Audio Architecture Update (Q888111)	SP32395	1
Microsoft Windows XP Vulnerability in HTML Help (Q896358)	SP33077	1
NVIDIA Graphics Driver	SP36630	6.14.11.6006

NVIDIA Graphics Driver	SP37105	6.14.11.6006
NVIDIA Graphics Driver	SP37594	6.14.11.6230
PDF Complete Update	SP36653	3.0.84
Surveyor Power Management Application	SP36360	4.0.1.350
Surveyor Power Management Application	SP36798	4.0.1.350
Credential Manager for HP ProtectTools	SP34795	2.5
Desktops Chinese Quad Byte Support	SP32339	1
Device Access Manager for HP ProtectTools	SP34792	2
Drive Encryption for HP ProtectTools	SP34793	1
Business Desktops BIOS Utilities	SP36777	4
HP Compaq Business Desktop System BIOS (786F1 BIOS)	SP36728	1.04
HP Insight Diagnostics Offline Edition	SP36472	7.9.0
HP System Software Manager	SP34475	2
HP USB Smartcard Keyboard Drivers	SP35579	4.32.0.1

**Table 4 - dc7800 Softpaqs for Windows Vista**

Name	Softpaq #	Version #
ADI HD Audio Driver for Microsoft Windows Vista	SP36629	5.10.1.5440
Altiris Agent Solution	SP35304	6.8.282
ATI Graphics Driver for Microsoft Windows Vista	SP35294	8.342.0.0
BIOS Configuration for HP ProtectTools	sp34800	3
Broadcom Bluetooth for Windows	SP36868	6.0.1.5400
Business Desktops BIOS Utilities	SP36777	4
Credential Manager for HP ProtectTools	SP34795	2.5
Device Access Manager for HP ProtectTools	SP34792	2
Drive Encryption for HP ProtectTools	SP34793	1
HP Backup and Recovery Manager scheduler application patch	SP36740	1
HP Compaq Business Desktop System BIOS (786F1 BIOS)	SP36728	1.04
HP Insight Diagnostics Offline Edition	SP36472	7.9.0
HP System Software Manager	SP34475	2
HP USB Smartcard Keyboard Drivers	SP35579	4.32.0.1
Intel Active Client Manager HECI Device	SP36370	3.0.30.1086
Intel Active Client Manager HECI Device	SP37019	3.0.30.1086
Intel Chipset Support for Windows	SP36714	8.3.0.1013
Intel Graphics Driver for Microsoft Vista (32-bit Edition)	SP36605	7.14.10.1283
Intel Graphics Driver for Microsoft Vista (64-bit Edition)	SP36606	7.14.10.1283
Intel Graphics Driver for Microsoft Windows 2000/XP	SP36604	6.14.10.4837
Intel PRO/1000 Drivers for Multi-OS	SP36743	9.8.20.0
Intel(R) AMT LMS_SOL for AMT 3.0	SP36371	5.4.0.1065
Intel(R) AMT LMS_SOL for AMT 3.0	SP37050	5.4.0.1065
LightScribe Driver Update	SP36866	1.10.13.1
Nvidia Graphics Driver for Microsoft Windows Vista (32 - bit Editions)	SP36631	7.15.11.6006
Nvidia Graphics Driver for Microsoft Windows Vista (64 - bit Editions)	SP36632	7.15.11.6006

PDF Complete Update	SP36653	3.0.84
Surveyor Power Management Application	SP36360	4.0.1.350
Surveyor Power Management Application	SP36798	4.0.1.350
Windows Vista 32 bit Chinese Simplified Graphics driver install fix (Q932814)	SP35368	1
Windows Vista 64 bit Chinese Simplified Graphics driver install fix (Q932814)	SP35369	1

### Microsoft Windows 2000

PC OEMs are no longer allowed to ship personal computers with Windows 2000 licenses; thus, HP will not be providing this operating system preinstalled on the dc7800 series. HP will continue to provide limited software support for Windows 2000 Professional with Service Pack 4. Available software drivers to support the dc7800 series for Windows 2000 are available for download from [www.hp.com](http://www.hp.com) usually within 30 days of product launch. As a service, HP can install Windows 2000 on new PCs using customer provided Windows 2000 image via the HP PC Customization Services (PCCS) process. Interested customers should contact their HP account manager. Below is a list of Windows 2000 compatible drivers expected to be available within 30 days of the launch of the dc7800 product line:

**Table 5 - dc7800 Softpaqs for Windows 2000**

Name	Softpaq #	Version #
Agere Systems PCI Soft Modem	SP33438	2.1.65.0
Altiris Deployment Solution Agent - Preload for XP	SP35473	6.8.282
ATI Graphics Driver for Microsoft Windows 2000/XP	SP34267	8.261.4
Business Desktops BIOS Utilities	SP36777	4
Desktops Chinese Quad Byte Support	SP32339	1
HP Compaq Business Desktop System BIOS (786F1 BIOS)	SP36728	1.04
HP Insight Diagnostics Offline Edition	SP36472	7.9.0
HP System Software Manager	SP34475	2
HP USB Smartcard Keyboard Drivers	SP35579	4.32.0.1
Intel Chipset Support for Windows	SP36714	8.3.0.1013
Intel Graphics Driver for Microsoft Windows 2000/XP	SP36604	6.14.10.4837
Intel PRO/1000 Drivers for Multi-OS	SP36743	9.8.20.0
Microsoft Windows 2000 SP4 Universal Audio Architecture Update (Q888111)	SP30628	1
NVIDIA Graphics Driver	SP36630	6.14.11.6006
NVIDIA Graphics Driver	SP37105	6.14.11.6006
NVIDIA Graphics Driver	SP37594	6.14.11.6230

### Microsoft Windows NT

Microsoft NT is not supported for the dc7800 series.

## ROM BIOS Information

Key features of the dc7800 BIOS include:

**Deployment and manageability** - HP BIOS provides several technologies that help integrate the HP Business desktop computer into the enterprise such as PXE, remote configuration, remote control, and F10 Setup support for 12 languages.

**Stability** - HP BIOS supports the HP stable product roadmap by releasing only critical BIOS changes to the factory and advanced change notification.

**Security** - HP BIOS offers a robust and flexible set of security features to help the system administrator secure their systems from removal of sensitive data, and help prevent access by unauthorized users, subversion of OS security policies, removal of hardware, flash of rogue BIOS images, master boot record viruses, and attacks on BIOS settings.

**Thermal and power management** - The HP BIOS provides and enables thermal and power management technologies to assist in operating the HP Business Desktop computer in any enterprise environment.

**Serviceability** - HP BIOS provides diagnostic and detailed service information.

**Upgrades and recovery** - HP BIOS provides numerous ways to upgrade HP Business Desktop computers including BIOS updates from within DOS (Flashlite), BIOS updates from within Windows (HPQFlash, SSM), and fail-safe recovery.

### Additional BIOS Highlighted Features

**Power-On password** - The power-on password helps prevent an unauthorized user from powering on the system. After a power-on password is established, the user is required to type the password during the power-on process.

**Administrator password** - The administrator password, also known as the setup password, helps prevent unauthorized changes to the system configuration. If the administrator password is not known, the BIOS version cannot be changed and changes cannot be made to BIOS settings using F10 setup or under the OS.

**Advanced Configuration and Power Interface (ACPI)** - Advanced Configuration and Power Interface (ACPI) represents a significant innovation in power and configuration management, allowing operating systems and applications to manage power based on activity and usage. HP Compaq dc7800 models use ACPI to provide power conservation features under Windows XP and Windows 2000.

The ROM BIOS version that will initially ship on the dc7800 is version 3.0.1.1104.

## Common Image Considerations

One of the design benefits of the dc7800 product family is that HP carefully engineers the software image to be compatible across the various hardware form factors within the family. An important ingredient is delivering common hardware architecture as this reduces image compatibility issues. HP realizes that many of our customers create their own OS images to incorporate applications and standards for their business.

For customers who create their own images it is recommended by HP to begin with the factory preinstalled image as a “base” for the common image. If the file system type or the partition structure is not desirable, HP recommends that you still use the factory-preinstalled image to build the common image. File system and partitioning can be customized during the image load phase of the deployment process.

If the factory-preinstalled image has already been removed from the hard drive, you may restore that image using the HP Backup & Recovery Manager included with the computer. For more information on building a common image please refer to HP document, *Building a Common Image, Developing a Common Image across HP Desktops*, part number 339083-002.

# Software Image Development on dc7800 Stable Products

At the product launch of the dc7800 product family, the dc7800 small form factor (SFF), ultra-slim desktop (USDT), and convertible mini-tower (CMT) designs will utilize the Intel Q35 Express chipset. It is important to point out that HP will deliver a common software OS image that is fully compatible between the dc7800 CMT, SFF, and USDT architectures.

- To prevent visible hardware re-enumeration between the SFF, CMT, and USDT systems, HP recommends that customers follow recommended procedures to prepare their system image using Microsoft's Sysprep tool. For guidelines on how to develop a sysprep image refer to HP whitepaper, "Building a Common Image" part number 339083-002.
- If the software image is captured without first using Sysprep but instead copied to new systems using a disk duplication tool, the operating system will require discovery of new hardware causing visible re-enumeration, even on identical chipset hardware.

Visible re-enumeration is common function of the operating system (to enable hardware support) and should not be a cause for concern as long as the appropriate drivers are available for the operation system to locate and install. If during re-enumeration a software driver is not found during the discovery process, the affected hardware will not be properly installed and the hardware device will be unavailable to the user. The hardware devices can be viewed using Windows Device Manager and each unavailable hardware device will display a yellow exclamation mark "!" commonly referred to as bang. At this point, proper loading of the appropriate software driver for the hardware device will enable the unsupported device to function.

**Important Note:** When creating a master image it is very important to keep the hardware device drivers in their original directory locations. Moving them can cause Windows to not properly locate the software drivers for installation during the hardware discovery process and fail. If it is deemed necessary to move drivers to another location within the image, it is important to update the path directory requirement for the Sysprep process. For more about driver directory path structures see "Pooling Drivers on the Reference Machine" in the HP whitepaper, "Building a Common Image" part number 339083-002.

## Software delivery

Delivery methods for software updates available for HP commercial computers include:

- HP Worldwide Web site and Download Facility (<http://www.hp.com>)
- HP *Restore Plus!* CD (ISO files included in HDD partition as part of the HP Backup & Recovery Manager software)

### HP Worldwide Web site and download facility

Individual drivers and utilities can be downloaded, in the form of Softpaqs, from the HP Download Facility or from the Web site at <http://h18000.www1.hp.com/support/files/> or <ftp://ftp.compaq.com/pub/Softpaq/>. Softpaqs provide a distribution method for driver and ROM updates and product software enhancements.

### HP *Restore Plus!* CD

HP *Restore Plus!* CDs are provided with each HP Compaq desktop system as ISO files located in a recovery partition on the HDD. The ISO files can be accessed with HP Backup & Recovery Manager to burn to CD or to be moved to another safe location for later burning. The CDs provide an easy-to-use complete restore solution for preinstalled operating systems. This restore solution allows users to return the operating system to near factory state. Please refer to the *Restore Plus!* installation manual for instructions on restore options.

# Software enhancements

This section discusses the following software enhancements:

- HP Client Manager Software
- Video
- Audio
- DMI Transition
- User Manuals

## HP Client Management Solutions

HP provides a comprehensive portfolio of HP Client Management Solutions to help reduce the complexity and cost of managing commercial PCs throughout their lifecycle. This portfolio includes both HP and third party client management software, HP/third-party joint developed value-add solutions, and HP manageability tools & technology. A variety of solutions to meet a range of client management needs is offered:

- HP Software Solutions
  - HP Client Automation – Starter and Standard Edition
  - HP Out-of-Band Management Console
  - HP Client Automation – Enterprise Edition (based on Radia technology)
- Altiris Solutions
  - Altiris Client Management Suite
  - Altiris Out-of-Band Management Solution
  - Altiris Real-Time System Manager Solution
  - HP Client Manager for Altiris
  - Altiris Connector for HP Systems Insight Manager
- Microsoft Solutions
  - Systems Management Server (SMS)
  - HP Client Catalog for SMS
- Verdiem Surveyor
- HP Management Tools and Technology
  - HP Client Management Interface
  - HP SoftPaq Download Manager
  - HP System Software Manager
  - HP Backup and Recovery Manager

For more information on HP Client Management Solutions, visit [www.hp.com/go/easydeploy](http://www.hp.com/go/easydeploy).

## Graphics

HP dc7800 PCs feature the Intel Graphics Media Accelerator X3100. Intel software drivers enable all functionality of the graphics hardware. Driver support includes Intel's control panel that provides easy access to graphics settings. Intel's control panel is accessible by the in the Windows Control Panel or optionally on the system tray. Intel graphics drivers are available from the HP support web site for the dc7800

## Audio

The dc7800 implements the UAA (Universal Audio Architecture) with an ADI 1884 High Definition audio CODEC. The ADI drivers include a control panel for controlling features of the audio subsystem. ADI's control panel

is accessible from the Windows control panel or optionally through a system tray icon. In order to enable the HD audio bus in Windows XP, Q888111 (The Microsoft UAA bus driver) must be installed on the system before the ADI driver is installed. Both Q888111 and the ADI audio drivers are available from the HP support web site for the dc7800. HP's BIOS settings allow for disabling the internal speaker for users operating in a quiet environment such as libraries.

## HP Client Management Interface

Regardless of the system management tools your IT department uses, managing both your hardware and software assets is important to keeping your IT costs low and your business agile.

With the HP Client Management Interface (HP CMI), new HP business computers seamlessly integrate into your managed IT environment. HP CMI provides an interface that the IT Administrator can write scripts to that simplifies the integration of HP business computers with popular industry system management tools (including Microsoft Systems Management Server, IBM Tivoli Software, and HP Software Client Automation products) and custom in-house developed management applications. Using HP CMI, systems management tools and applications can request in-depth client inventory, receive health status information, and manage system BIOS settings by communicating directly with the client computer, reducing the need for agent or connector software to achieve integration. HP Client Management Interface is based on industry standards that include Microsoft Windows Management.

Interface (MS WMI), Web Based Enterprise Management (WBEM), System Management BIOS (SMBIOS), and Advanced Configuration and Power Interface (ACPI). HP CMI is a foundation technology utilized in HP Client Management Solutions. With HP CMI, HP gives you flexibility in choosing how you manage your HP client computers.

HP Client Management Interface used in conjunction with system management software can:

- Request in-depth client inventory information— Capture detailed information about the processors, hard drives, memory and BIOS, including sensor information (such as fan speed, voltage, and temperature).
- Receive health status information — Subscribe for a wide range of client hardware alerts (such as over-temperature, fan stall, and hardware configuration changes) to be sent to the system management console, application, or to the local client computer. Alerts are sent real-time when triggered by hardware events.
- Manage system BIOS settings — Perform “F10” key functions including setting and changing the BIOS passwords and computer boot order remotely from your system management console on any or all of your client systems without having to visit each machine.

## User manuals

Numerous manuals are available on the *Documentation* CD included with the dc7800 desktop:

- **Quick Setup** - Provides information needed to connect your computer and peripheral devices.
- **Getting Started** - Provides information needed to set up factory-provided software. Basic troubleshooting is also provided should you have problems during initial startup.
- **Hardware Reference** - Provides basic information for upgrading this series of computers.
- **Computer Setup (F10) Utility** - Provides instructions on how to use Computer Setup. This tool is used to reconfigure and modify computer default settings when new hardware is installed and for maintenance purposes.
- **Desktop Management Guide** - Provides definitions and instructions for using security and manageability features that are preinstalled on select models.
- **HP ProtectTools Embedded Security** - Provides instructions for using the software that allows you to configure settings for the HP ProtectTools Embedded Security chip.



- **Network and Internet Connections** - Provides definitions and instructions for using network interface controller (NIC) features that are preinstalled on select desktop models.
- **Troubleshooting** - Provides helpful hints and solutions for troubleshooting this series of computers as well as scenarios for possible hardware and software problems.
- **Safety and Regulatory Information** - Provides safety and regulatory information that is compliant with U.S., Canadian, and International regulations.
- **Warranty\*** - Provides the warranty terms and conditions, warranty period, and types of warranty service available for the product

## General Software Image Contents

HP Compaq Business Desktops come standard with a factory-installed software image. The image consists of a number of separate software components including the operating system (such as Microsoft Windows XP Professional Edition), drivers for the specific hardware devices included with your system (such as graphics, network interface cards, modems, etc.), and a small number of additional applications. See the *Additional Software* section for possible list of applications.

Quick fixes (QFEs) are also included with the image for any Microsoft operating system issues that HP identified as problems that might affect its customers. These QFEs will show up under the Add/Remove Programs applet in the Control Panel. Since most of these fixes are critical in nature, they will appear grayed out by design so they cannot be removed.

Standalone service packs may also be preloaded on some systems depending on the version of the integrated operating system and the timing and nature of the HP Compaq Business Desktop product introduction. Other software applications that are preloaded include optional business software. Examples of these types of applications include Norton Anti-Virus, and Altiris Deployment Agent for Windows (A Client). An HP developed application called Software Setup provides a user interface to allow installation of these optional preloaded programs.

Following is a more detailed list of general software that may comprise the factory image:

### Microsoft Windows Operating System Software

- Windows XP Professional or Windows XP Home Edition
- Microsoft Direct X
- .Net (pronounced dot net) Framework for Windows XP
- Microsoft-provided QFE's
- Quad Byte Supplement (for Simplified Chinese language only)
- Windows XP Professional Multilingual User Interface (MUI) Pack (for Eastern European and Thai regions)
- Standalone Service Packs

### Hardware/OEM specific drivers and files

- Graphics
- Network Interface Card
- Audio
- Modem

---

\* This document is provided in print and on the Web only, and is not included on the Documentation CD.

- Wireless LAN
- HP Monitor INF
- Chipset INF
- HP SLP files for Windows XP – Allows a user to immediately use Windows XP without having to activate the operating system with Microsoft
- HP Online Crash Analysis File
- HP Security Guest account fix

### **HP Specific Applications**

- HP Help and Support Center for Windows XP
- HP Software Setup (allows users to install components that are included with the image but not already installed)
- HP Online EULA for Windows XP
- HP Safety and Comfort Guide
- HP Technical Support Phonebook
- Set Video Refresh Rate

### **Other typically preinstalled applications**

- Altiris Deployment Agent for Windows – A Client (preloaded)
- HP Openview Client Manager Agent
- PDF Complete (preinstalled)
- Microsoft Word (optional)
- Microsoft Works (optional)
- Microsoft Office 2007 (optional)
- Symantec Anti Virus (optional)

In addition to the above list, some HP specific tools will temporarily reside on the hard drive during factory installation. These are later deleted from the drive but will show up if you examine the hard drive contents using one of the methods in the next section of this document. Some examples of these tools are:

- HP File Based installer
- HP FBI Toolbox
- HP Marketing Tweak Scripts
- HP Marketing Tweak Bitmaps & URLs
- Multiple OS Processing Module
- WinPE with Network Support
- Device Checking Utility
- Windows XP Unbundle Processing Tweaks
- Windows XP 2000 OS Tweaks
- CDC Flag Check Utility
- Extend MSC
- SDV ghost load high flag
- System corruption checker
- Set Video Refresh rate

- Preinstall Image tag
- Run CDC flag for USB devices
- Enable MSI extended debug
- Power management settings
- CVA Reader
- INFO.BOM Generator
- Online Crash Analysis Utility

## Examining the Image Contents

Begin with the preinstalled image as a base for determining what is installed. If the preinstalled image has already been removed from the hard drive, you may restore using the *Restore Plus!* CD.

This white paper describes three methods of examining the factory-preinstalled image:

### Examining the INFO.BOM file (OS-independent)

The preinstalled image on an HP Compaq Business Desktop contains a file called INFO.BOM located in the c:\system.sav folder (hidden folder) on the hard drive. This plain text file contains a list of preinstalled software. The following shows a sample INFO.BOM file:

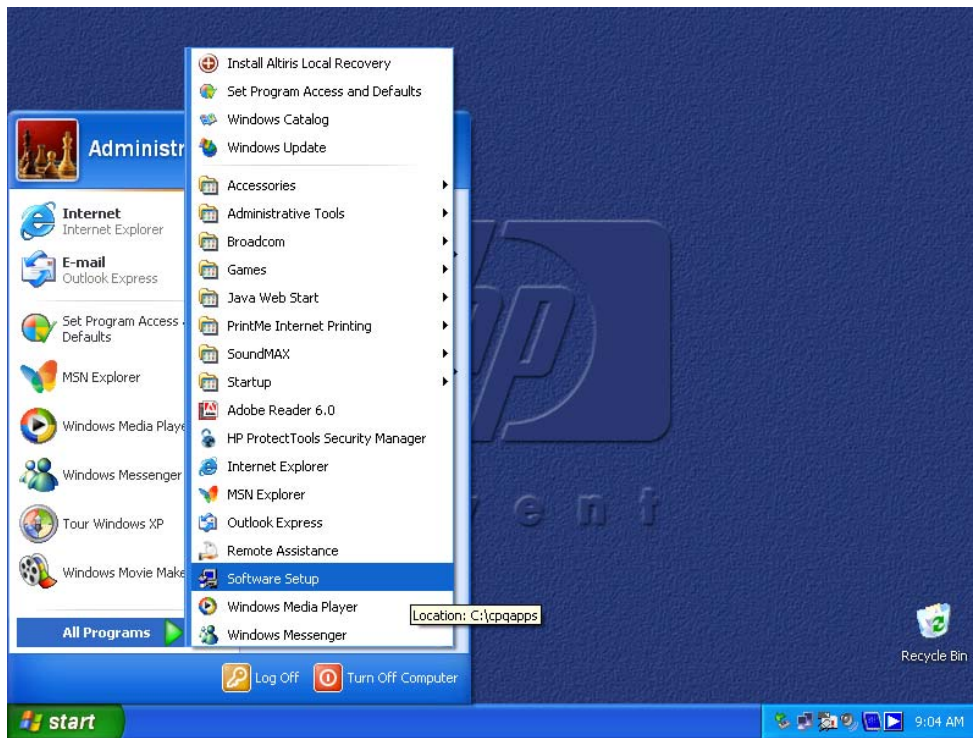
```
-----
ID#, P/N, PrismRev, Description, Version, Revision, Pass
-----
(01) 000000-00A, 100, POGEN PLACEHOLDER
(02) 218154-B2R, 100, MARKETING TWEAK SCRIPTS, VER 1.00, REV C, PASS 9
(03) 218155-B2T, 101, MARKETING BITMAPS AND URLS, VER 1.10, REV G, PASS 2
(04) 226623-B2H, 100, APPLICATION INSTALLER, VER 2.00, REV H, PASS 1
(05) 257956-B2C, 101, WINDOWS XP SLP FILES, VER 2.00, REV A, PASS 2
(06) 267992-B2D, 100, SYSTEM CORRUPTION CHECKER, VER 1.00, REV D, PASS 1
(07) 274432-B2H, 100, SET VIDEO REFRESH RATE., VER 1.2.1.3, REV H, PASS 1
(08) 284840-B2B, 100, BRAND.INI - COM DESK SRP, VER 1.00, REV B, PASS 1
(09) 291529-B2D, 100, TECH SUPPORT PHONEBOOK, VER 1.00, REV A, PASS 8
(10) 303647-B2C, 100, POWER MANAGEMENT SETTINGS, VER 1.00, REV A, PASS 4
(11) 303730-B2D, 100, MONITOR INF AND ICM FILES, VER 1.20, REV D, PASS 1
(12) 305407-B2A, 106, WINDOWS XP SP1 PRO AND HOME OS TWEAKS, VER 2.00, REV A, PASS 6
(13) 305408-B2B, 102, WINDOWS XP SP1 PRO AND HOME UNBUNDLE PROCESS TWEAKS, VER 3.00, REV A, PASS 2
(14) 306153-B2C, 100, ONLINE CRASH ANALYSIS FILE, VER 4.2, REV C, PASS 1
(15) 307374-B2B, 100, EXTEND NTFS MSC, VER 1.00, REV A, PASS 5
(16) 316762-B21, 100, ASSEMBLY
    (16.01) 306733-B2A, 100, SDV GHOST LOAD HIGH FLAG, VER 1.00, REV A, PASS 1
    (16.02) 322276-B2A, 100
(17) 316856-B2E, 107, ADI AC97 INTEGRATED DIGITAL AUDIO, VER 5.12.1.4070, REV E, PASS 9
    * VEN_8086&DEV_266E&SUBSYS_3005103C, VEN_8086&DEV_266E&SUBSYS_3006103C, VEN_8086&DEV_266E&SUBSYS_3007103C
(18) 318044-B2E, 101, ADOBE ACROBAT READER, VER 6.00, REV E, PASS 2
(19) 323301-B2B, 100, HYPERTHREADING DEFAULTS, VER 1.00, REV A, PASS 3
(20) 323740-B2D, 106, HP PROTECTTOOLS EMBEDDED SECURITY, VER 3.00, REV D, PASS 7
    * ACPI\IFX0101
(21) 325642-B2E, 100, NTFS SECURITY UPDATE, VER E, REV 1.02, PASS 1
(22) 325643-B2B, 101, ALTIRIS EXPRESS AGENT - PRELOAD, VER 5.50, REV B, PASS 2
(23) 325740-B2A, 100, WINDOWS XP UNCHECKED BUFFER IN WINDOWS SHELL FIX Q329390, VER 1.00, REV A, PASS 1
(24) 325755-B2A, 102, MICROSOFT DIRECTX 9.0, VER 1.00, REV A, PASS 4
(25) 325939-B2B, 100, IT DEPT INFO README FILE, VER 1.00, REV B, PASS 1
(26) 326094-B2A, 100, PREINSTALL IMAGE TAG, VER 1.00, REV A, PASS 1
(27) 330899-B2A, 102, DRIVER REPAIR TEXT ADD ON, VER 1.00, REV A, PASS 3
(28) 333095-B2A, 100, INSTALL SHIELD FIX, VER 1, REV A, PASS 1
(29) 335591-B2B, 100, WINDOWS XP SATA FIX Q812415, VER 1.00, REV B, PASS 1
(30) 336614-B2D, 100, USB 2.0 UPGRADES FOR WINDOWS XP, VER 1.00, REV D, PASS 1
(31) 339254-B2A, 101, MICROSOFT WINDOWS DMA DOWNSHIFT FIX, VER 1.00, REV A, PASS 2
(32) 342538-B2A, 100, DOT NET 1.1 FOR WINXP INSTALL SCRIPT, VER 1.10, REV A, PASS 1
(33) 343140-B2E, 100, SUN JAVA, VER 1.4.2_03, REV E, PASS 1
(34) 347963-B2B, 100, MULTIPLE FIXES IN RPC - Q824146, VER 1.00, REV B, PASS 2
(35) 347966-B2A, 100, MICROSOFT DIRECTX 9.0B, VER 1.00, REV A, PASS 2
(36) 348293-B2A, 100, MICROSOFT EXPLORER HANG DURING PNP FIX - KB314405, VER 1.00, REV A, PASS 1
(37) 352304-B2A, 100, MICROSOFT HTML HELP TOPICS FIX - Q811630, VER 1.00, REV A, PASS 1
(38) 352601-006, 100, ASSEMBLY
    (38.01) 303650-00E, 100, COMMERCIAL EULA, VER 1.00, REV A, PASS 6
-----
```

(38.02) 307970-00B, 100, WINXP PROFESSIONAL SP1 SBSI, VER 2.00, REV A, PASS 1  
(38.03) 317498-00B, 100, DOT NET FOR WINXP, VER 1.10, REV A, PASS 1  
(38.04) 340314-00A, 101, WINDOWS XP PROFESSIONAL SP1A INTEGRATED I386, VER 1.00, REV A, PASS 2  
(38.05) 340322-00A, 102, WINDOWS XP SP1A PROFESSIONAL OS IMAGE APIC, VER 1.00, REV A, PASS 2  
(39) 355084-B2A, 100, MICROSOFT MESSENGER VULNERABILITY FIX - Q828035, VER 1.00, REV A, PASS 1  
(40) 356854-B2A, 100, MICROSOFT IE6 SP1 NOVEMBER 03 CUMULATIVE PATCH - Q824145, VER 1.00, REV A, PASS 1  
(41) 357826-B2A, 101, WINDOWS XP SBSI GLOBAL INSTALL SCRIPT, VER 1.00, REV A, PASS 2  
(42) 359229-B21, 109, ASSEMBLY  
(42.01) 153574-B2K, 100, FBI INSTALLATION TOOL BOX, VER 2.50, REV C, PASS 4  
(42.02) 228570-B2W, 101, MULTIPLE OS PROCESSING MODULE, VER 1.40, REV A, PASS 5  
\* USR\_FACTORY  
(42.03) 279843-B2D, 100, DMI UIA TOOL, VER 1.00, REV D, PASS 1  
(42.04) 288252-B2C, 107, WINPE WITH NETWORK SUPPORT, VER 1.00, REV C, PASS 6  
(42.05) 291900-B2F, 100, DEVICE CHECKING UTIL 32-BIT, VER 1.00, REV F, PASS 1  
(42.06) 300593-B2B, 100, INFO.BOM GENERATOR, VER 1.00, REV B, PASS 1  
(42.07) 325670-B2C, 101, HP FILE BASED INSTALLER, VER 1.60, REV E, PASS 4  
(42.08) 333746-B2C, 100, CDC FLAG CHECK UTILITY, VER 1.05, REV C, PASS 1  
(42.09) 346573-B2E, 102, DEVICE CHECKING UTIL 32-BIT CONFIG, VER 2.00, REV E, PASS 3  
(42.10) 367180-B2A, 100, CHECK FOR CERTAIN FILES, VER 1.00, REV A, PASS 1  
(43) 359674-B2A, 108, HP PROTECTTOOLS SECURITY MANAGER, VER 1.0, REV A, PASS 9  
(44) 359678-B2A, 107, BROADCOM DRIVERS FOR WINDOWS XP AND 2000, VER 7.73.0.0, REV A, PASS 9  
\* VEN\_14E4&DEV\_1676, VEN\_14E4&DEV\_1677, VEN\_14E4&DEV\_1696, VEN\_14E4&DEV\_16A6, VEN\_14E4&DEV\_1653, VEN\_14E4&DEV\_166E  
(45) 360182-B2B, 101, MICROSOFT WINDOWS XP SERVICE PACK 1 HOTFIXES, VER 1.00, REV B, PASS 2  
(46) 360426-B2A, 114, INTEL GRANTSDALE GRAPHICS DRIVER, VER 6.14.10.3829, REV A, PASS 14  
\* VEN\_8086&DEV\_2582, VEN\_8086&DEV\_2782  
(47) 360458-B2B, 100, PROTECT YOUR PC OOBE SCREEN, VER 1.00, REV A, PASS 2  
(48) 361874-B2A, 102, INTEL CHIPSET SUPPORT FOR WINDOWS XP (ICH6), VER 6.00, REV A, PASS 3  
\* VEN\_8086&DEV\_2580, VEN\_8086&DEV\_2581, VEN\_8086&DEV\_2584, VEN\_8086&DEV\_2585, VEN\_8086&DEV\_2640, VEN\_8086&DEV\_2641,  
VEN\_8086&DEV\_2642, VEN\_8086&DEV\_266A, VEN\_8086&DEV\_244E, VEN\_8086&DEV\_2448, VEN\_8086&DEV\_2660, VEN\_8086&DEV\_2662,  
VEN\_8086&DEV\_2664, VEN\_8086&DEV\_2666, VEN\_8086&DEV\_2651, VEN\_8086&DEV\_2652, VEN\_8086&DEV\_266F, VEN\_8086&DEV\_2658,  
VEN\_8086&DEV\_2659, VEN\_8086&DEV\_265A, VEN\_8086&DEV\_265B, VEN\_8086&DEV\_265C  
(49) 364887-B2B, 100, Q828028 MICROSOFT VULNERABILITY WITHIN ASN FIX, VER 1, REV B, PASS 1  
(50) 370917-B2A, 101, SECURITY UPDATE\_VULNERABILITY WITHIN MICROSOFT WINDOWS FIX\_Q835732, VER 1.00, REV A, PASS 2  
(51) 370918-B2A, 100, Q828741\_CUMULATIVE UPDATE\_VULNERABILITY WITHIN RPC\_DCOM FIX, VER 1, REV A, PASS 1

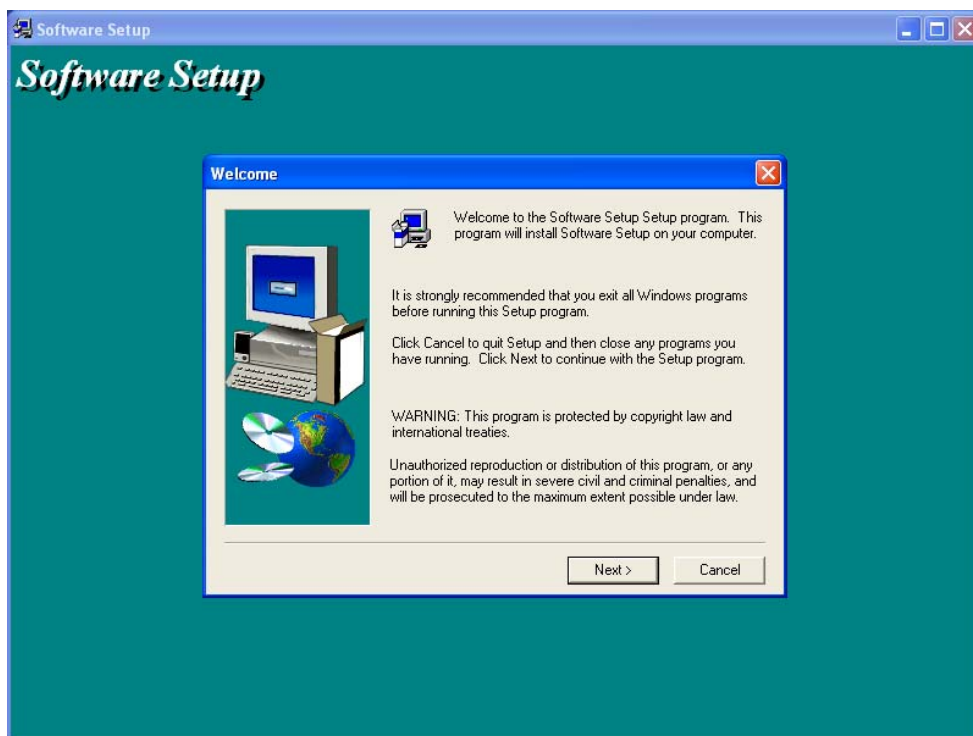
The previous list includes the HP software part number, database revision, name of the software, version, revision, pass, and a list of hardware Plug-and-Play ID's that are supported (if applicable). You can use Notepad or any other application that displays text files to examine the contents of this file.

## Preloaded Components

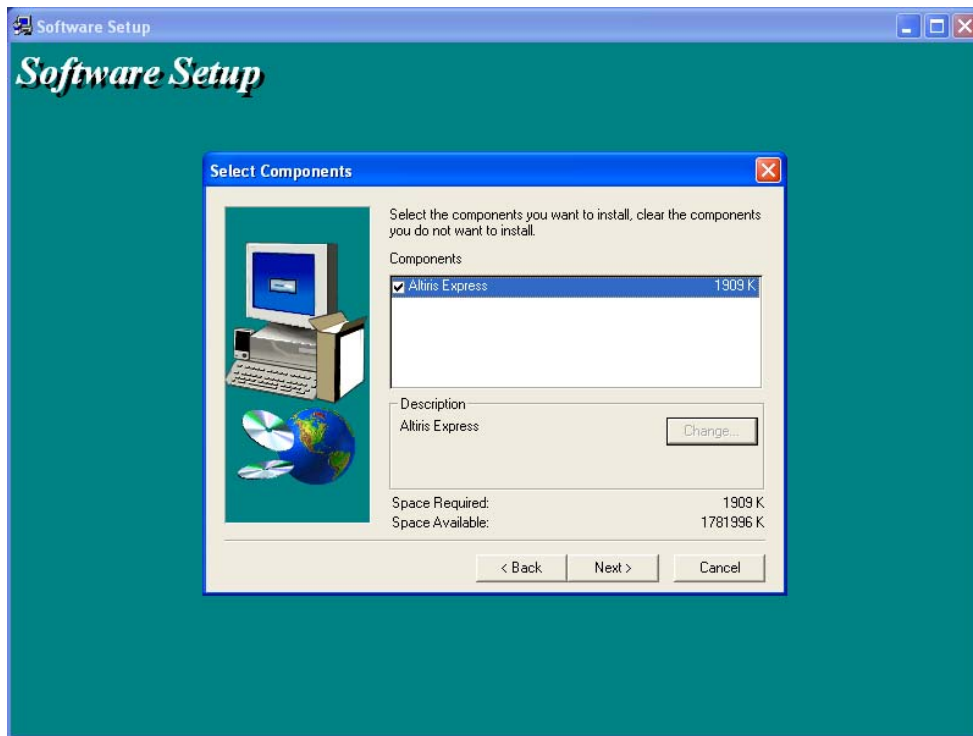
Some software may be preloaded (versus preinstalled). To view a list of preloaded components, you can run HP Software Setup. To run Software Setup, click **Start > All Programs > Software Setup**. A welcome screen will be displayed followed by a list of preloaded components. From Software Setup, you can select the programs you want to install. The Software Setup application will launch the setup program for any of the components selected.



**Figure 1** - Access to HP Software Setup



**Figure 2** – HP Software Setup Welcome Screen



**Figure 3** – HP Software Setup Screen

## Additional Software

HP provides additional software on its PCs that can vary depending on the hardware configuration ordered. The additional software may be pre-loaded, preinstalled, or provided on CD with the PC when shipped. Below is a list of additional software that may have shipped on your dc7800 system:

- **HP Backup & Recovery Manager** – HP provides free data and system file protection for its business desktops, notebooks, and workstations. With HP Backup & Recovery Manager, you can quickly recover and get back to work when information is accidentally deleted or your operating system is corrupted.
- **HP ProtectTools** – HP ProtectTools Embedded Security Solution Software is a comprehensive set of tools that enables use of the HP ProtectTools Embedded Security Chip available on select desktop and notebook computers from HP. This solution provides a range of security features and application support including local file/folder encryption, protected digital certificate operations, and support for the RSA SecurID software token authentication solution. Designed to the Trusted Computing Group (TCG) standard, HP ProtectTools Embedded Security is ready for future applications designed to use the TCG standard, as well as those available today. HP ProtectTools Embedded Security is a hardware security chip, called the Trusted Platform Module (TPM) that integrates the core elements of trust into the subsystem (ships with the HP TPM).
- **HP ProtectTools Smart Card Security Manager** helps prevent unauthorized users from accessing business or personal data on your notebook, with added Smart Card BIOS preboot capabilities advantage of industry standards like CAPI and PKCS#11
- **Intervideo WinDVD** supports DVD playback for all systems that include a combo (CD-RW/DVD), DVD-ROM, or SuperMulti DVD drives.
- **Roxio DigitalMedia Plus/Easy Media Creator** – Roxio's "all-in-one" suite of applications that allows you to burn data, video, audio, create labels and play DVDs all from one application.

Roxio DigitalMedia Plus allows you to burn your digital music, preserve memories in electronic albums, create photo slide shows, create DVD movies (DVD burner required) and print or e-mail photos. Save large data projects to multiple discs or copy personal discs. Do more with your digital media with this powerful, easy-to-use, and fully integrated product.

**PDF Complete Special Edition** - Generate PDF files from any Windows application with the click of a button. The PDF format is a de-facto standard for the distribution of "read-only" company to company document interchange. Output created by PDF Complete SE are 100% compatible with Adobe Acrobat reader. After PDF Complete Special Edition has created 50 pages, it begins to place a small PDF Complete watermark on each page. A user may remove this watermark and receive additional features and benefits by upgrading to other PDF Complete products. However, even if a user does not choose to upgrade, PDF Complete Special Edition will continue to produce high quality PDF documents (ships preinstalled).

- **Set Video Refresh Rate** – Set Video Refresh Rate is a utility that attempts to optimize the monitor's refresh rate, and in some cases the resolution, for the best user experience. It does this by querying the capabilities of the display adapter and the monitor. For more information, see information contained in the Softpaq on the HP website for Set Video Refresh Rate.

Thank you for your purchase of and interest in HP business PC products. HP hopes that this white paper was useful in helping you understand the contents of your factory installed Business PC software image.

## Frequently asked questions

### **Q: How can DVD movies be viewed on Business Desktop dc7800 models?**

A: Intervideo WinDVD combines the picture and sound features of a PC to bring your DVDs to life. With comprehensive audio support, including Dolby Digital decoding, WinDVD lets you enjoy an unmatched theater experience anytime.

### **Q: Is the dc7800 preinstall image also compatible with other dc7800 models?**

A: Yes, the dc7800 preinstalled software image has been tested with the CMT, USDT, and SFF form factors.

### **Q: How do I obtain updated software components?**

A: The latest software updates are available from the HP Web site at <http://www.hp.com>. For customers without Web access, the HP Software Support CD Kit is available.

### **Q: Will the current image change significantly if new models are introduced?**

A: Changes made to the preinstall images will be limited to critical fixes, modifications that support new hardware features, and Microsoft related security issues or enhancements that will significantly improve overall system performance. Customers concerned about image changes should sign up for the HP Product Change Notification (PCN) process. See next question.

### **Q: How will I know what has changed?**

A: Updated HP desktop family software white papers describe updates or differences in software versions that are introduced with new products. HP Product Change Notification (PCN) is another method of communication to inform customers of changes to shipping models. For more information, go to <http://www.hp.com/go/pcn>.

### **Q: What is the difference between preloaded and preinstalled software?**

A: Preinstalled software refers to drivers, hardware enabling utilities, and applications that are ready to use as soon as your system has completed setup after initial power-on (unbundling). Preloaded software refers to applications

and utilities that provide additional features on applicable models, such as management, DVD playback, or CD-RW burning and must be installed prior to use.

**Q: Why is some software preloaded?**

A: Select software is preloaded to provide flexibility for our customers. It is loaded onto the hard drive but in an uninstalled state.

**Q: How do I install preloaded software?**

A: HP has made installation of preloaded software easy by including a Software Setup application. Simply launch Setup Software by clicking **Start > Programs > Software Setup**, select the desired applications, and follow the easy-to-use menus.



## For more information

To learn more about preinstalled software with OS support, contact your local HP sales representative or visit our Web site at <http://www.hp.com>.

© 2007 Hewlett-Packard Development Company, L.P. The information contained herein is subject to change without notice. The only warranties for HP products and services are set forth in the express warranty statements accompanying such products and services. Nothing herein should be construed as constituting an additional warranty. HP shall not be liable for technical or editorial errors or omissions contained herein.

Microsoft, Windows, and Windows NT are U.S. registered trademarks of Microsoft Corporation. Intel is a registered trademark of Intel Corporation or its subsidiaries in the United States and other countries.

491493-001, 09/2007