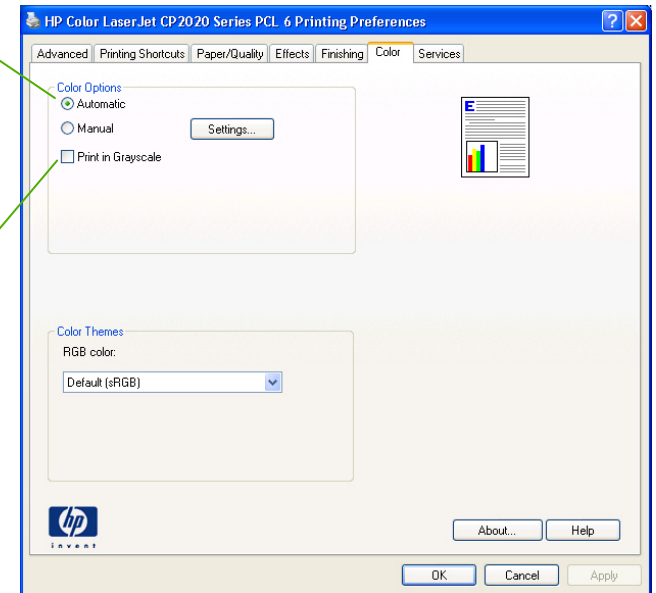


HP Color LaserJet CP2020 Series Printer – Color

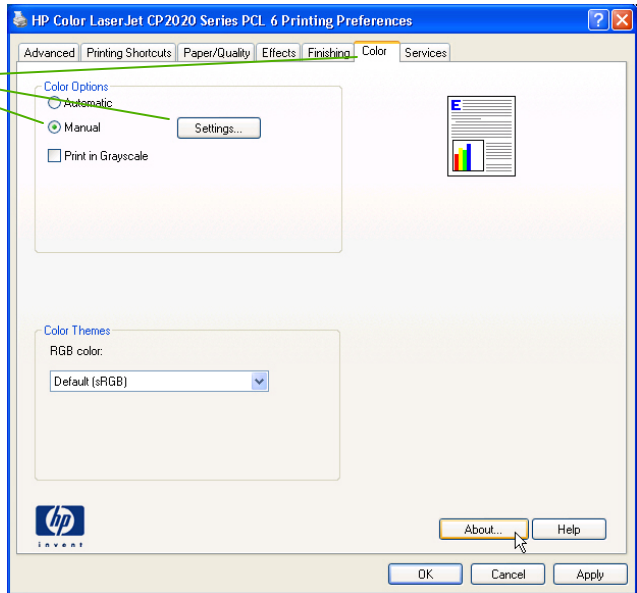


Adjust color / color settings

How do I?	Steps to perform
<p data-bbox="92 375 478 411">Adjust color / color settings</p> <p data-bbox="92 443 226 475">Automatic</p> <p data-bbox="92 595 327 627">Print in Grayscale</p>	<p data-bbox="577 343 1333 454">Setting color options to Automatic typically produces the best possible print quality for color documents. The Automatic color adjustment option optimizes the neutral-gray color treatment, halftones, and edge enhancements for each element in a document.</p> <p data-bbox="577 486 1270 542">NOTE: Automatic is the default setting and is recommended for printing all color documents.</p> <p data-bbox="577 590 1344 678">Select the Print in Grayscale option from the printer driver to print a color document in black and white. This option is useful for printing color documents that will be photocopied or faxed.</p> <p data-bbox="577 734 1249 790">When Print in Grayscale is selected, the product uses the monochrome mode, which reduces use of the color cartridges.</p>





How do I?	Steps to perform
<p>Manual color adjustment</p>	<p>Use the Manual color adjustment option to adjust the neutral-gray color treatment, halftones, and edge enhancements for text, graphics, and photographs. To gain access to the manual color options, from the Color tab, select Manual, and then select Settings.</p> 





How do I?

Manual color options

Steps to perform

- **Halftone** options affect the color output resolution and clarity.
 - **Smooth** provides better results for large, solid-filled print areas and enhances photographs by smoothing color gradations. Select this option when uniform and smooth area fills are the top priority.
 - **Detail** is useful for text and graphics that require sharp distinctions among lines or colors, or images that contain a pattern or a high level of detail. Select this option when sharp edges and details are the top priority.
- The **Neutral Grays** setting determines the method for creating gray colors used in text, graphics, and photographs.
 - **Black Only** generates neutral colors (grays and black) by using only black toner. This guarantees neutral colors without a color cast. This setting is best for documents and grayscale viewgraphs.
 - **4-Color** generates neutral colors (grays and black) by combining all four toner colors. This method produces smoother gradients and transitions to other colors, and it produces the darkest black.
- The **Edge Control** setting determines how edges are rendered. Edge control has two components: adaptive halftoning and trapping. Adaptive halftoning increases edge sharpness. Trapping reduces the effect of color-plane misregistration by overlapping the edges of adjacent objects slightly.
 - **Maximum** is the most aggressive trapping setting. Adaptive halftoning is on.
 - **Normal** sets trapping at a medium level. Adaptive halftoning is on.
 - **Light** sets trapping at a minimal level. Adaptive halftoning is on.
 - **Off** turns off both trapping and adaptive halftoning.

