

HP Deskjet F4200 All-in-One series



基础知识手册

Basics Guide



惠普公司通知

本文档所含信息如有更改，恕不另行通知。

保留所有权利。未经惠普公司事先书面许可，严禁复制、改编或翻译本文档，除非版权法许可。HP 产品和服务的唯一保证在该产品或服务附带的明示保修声明中列出。本文档所包含的任何信息都不应理解为附加保证。对于本文件所含任何技术、编辑错误或遗漏，HP 不承担任何责任。

版权所有 © 2008 Hewlett-Packard Development Company, L.P.。

Windows、Windows 2000 和 Windows XP 是 Microsoft Corporation 在美国的注册商标。

Windows Vista 是 Microsoft Corporation 在美国和其他国家（地区）的注册商标或商标。

Intel 和 Pentium 是 Intel Corporation 或其在美国和其他国家（地区）的附属公司的商标或注册商标。

Hewlett-Packard Company notices

The information contained in this document is subject to change without notice.

All rights reserved. Reproduction, adaptation, or translation of this material is prohibited without prior written permission of Hewlett-Packard, except as allowed under copyright laws. The only warranties for HP products and services are set forth in the express warranty statements accompanying such products and services. Nothing herein should be construed as constituting an additional warranty. HP shall not be liable for technical or editorial errors or omissions contained herein.

© 2008 Hewlett-Packard Development Company, L.P.

Windows, Windows 2000, and Windows XP are U.S. registered trademarks of Microsoft Corporation.

Windows Vista is either a registered trademark or trademark of Microsoft Corporation in the United States and/or other countries.

Intel and Pentium are trademarks or registered trademarks of Intel Corporation or its subsidiaries in the United States and other countries.

HP Deskjet F4200 All-in-One series

基础知识手册

简体中文



目录

1 HP All-in-One 概述

HP All-in-One 总览.....	2
控制面板按钮.....	3
状态指示灯概述.....	4
放入准备扫描和复印的原件.....	5
复印.....	6
扫描原件.....	6

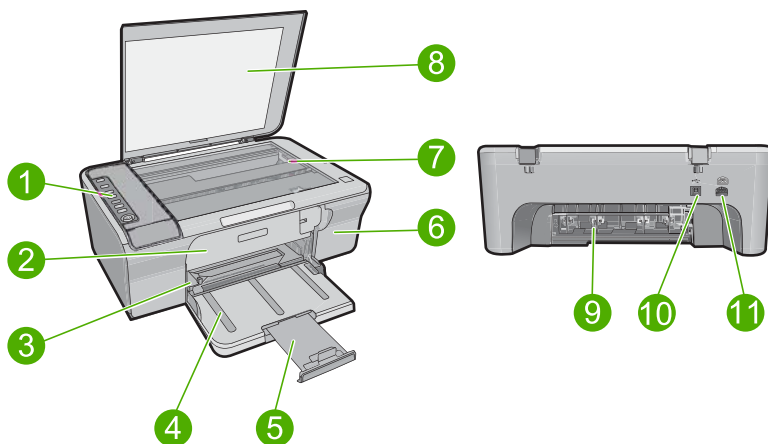
2 疑难排解和支持

卸载并重新安装软件.....	7
硬件安装问题疑难排解.....	7
清除卡纸.....	10
墨盒疑难排解.....	10
查找更多信息.....	10
安装手册.....	10
屏幕帮助.....	10
HP 网站.....	11
HP 支持.....	11
HP 电话支持.....	11
电话支持期.....	11
电话支持期过后.....	11
致电 HP 之前.....	11
技术信息.....	11
系统要求.....	12
纸张规格.....	12
物理规格.....	12
电源规格.....	12
环境规格.....	12
规范声明.....	12
标准型号.....	12
保修.....	13

1 HP All-in-One 概述

HP Deskjet F4200 All-in-One series 是一种通用设备，它可以让您轻松进行复印、扫描和打印。有关其所有特征和功能的信息，请参见屏幕帮助。

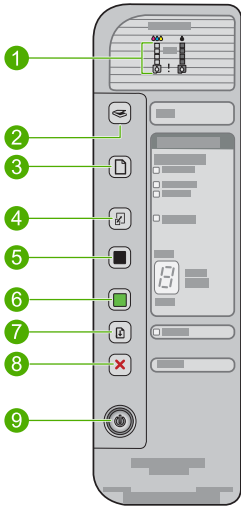
HP All-in-One 总览




编号	说明
1	控制面板
2	前检修门
3	纸张宽度导轨
4	入纸盘
5	纸盒延长板
6	墨盒盖
7	玻璃板
8	盖子衬板
9	后检修盖
10	后置 USB 端口
11	电源接口*

* 只用于 HP 提供的电源适配器

控制面板按钮

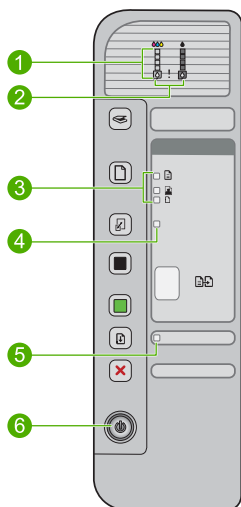


编号	图标	名称和描述
1		<p>墨水量指示灯：显示每个墨盒（四个三色墨盒，四个黑色墨盒）的墨水量信息。</p> <p>“检查墨盒”指示灯：指示是否需要重新安装指定的墨盒、更换墨盒或合上墨盒盖。黑色墨水图标指示灯指示黑色墨盒是否存在问题，而彩色墨水图标指示灯指示三色墨盒是否存在问题。</p>
2		<p>扫描：开始扫描当前放在玻璃扫描板上的原件。如果 HP All-in-One 忙于其他作业，则会忽略按下扫描按钮这一操作。扫描按钮仅当计算机处于启动状态时才起作用。</p>
3		<p>纸张选择：将纸张类型设置更改为普通纸、大照片纸或小照片纸。确保进纸盒中放入的纸张类型合适。默认的纸张类型设置是普通纸。</p> <p>“纸张选择”指示灯说明当前所选纸张的尺寸和类型。</p>
4		<p>调整以适合页面 / 调整到页面大小：将原件大小调整为适合所选纸张尺寸下的页边距的最大尺寸以进行复印。</p>
5		<p>开始复印 / 黑白：开始进行黑白复印作业。</p> <p>重复按下此按钮确定要复印多少份黑白副本。在设定了副本份数之后，打印机将很快开始打印。打印的副本份数将在按钮的右侧显示。</p>
6		<p>开始复印 / 彩色：开始进行彩色复印作业。</p> <p>重复按下此按钮确定要复印多少份彩色副本。在设定了副本份数之后，打印机将很快开始打印。打印的副本份数将在按钮的右侧显示。</p>
7		<p>重新开始：在问题解决后指示 HP All-in-One 继续工作。</p> <p>重新开始按钮旁闪烁的重新开始指示灯说明需要放入纸张或清除卡纸。</p>
8		<p>取消：停止打印、复印或扫描作业。</p>

编号	图标	名称和描述
9		开 / 关机: 打开或关闭 HP All-in-One。打开 HP All-in-One 时， 开 / 关机 按钮点亮。

状态指示灯概述

指示灯可以表示 HP All-in-One 的状态。



编号	说明
1	墨水量指示灯
2	“检查墨盒”指示灯
3	纸张选择 指示灯（用于 纸张选择 按钮）
4	调整以适合页面 / 调整到页面大小 指示灯
5	重新开始 指示灯
6	开 / 关机 指示灯

下表介绍了一些常见情况并解释了指示灯的含义。

指示灯状态	含义
所有指示灯均不亮。	HP All-in-One 已关机。按下 开 / 关机 按钮启动打印机。
开 / 关机 指示灯闪烁。	HP All-in-One 忙于打印、扫描、复印或校准墨盒。
开 / 关机 指示灯快速闪烁 3 秒钟，然后趋于稳定。	在 HP All-in-One 忙于打印、扫描、复印或校准墨盒时按下了按钮。

(续)


指示灯状态	含义
开 / 关机指示灯闪烁 20 秒钟，然后趋于稳定。	按下 扫描 按钮，计算机没有任何响应。
重新开始指示灯闪烁。	<ul style="list-style-type: none"> HP All-in-One 缺纸。 HP All-in-One 卡纸。
“检查墨盒”指示灯闪烁。	<ul style="list-style-type: none"> 墨盒盖打开。 没有墨盒或墨盒放置不正确。 没有撕下墨盒上的胶带。 墨盒与 HP All-in-One 不兼容。 墨盒可能有问题。
开 / 关机、重新开始和“检查墨盒”指示灯闪烁。	<p>扫描仪故障。</p> <p>关闭 HP All-in-One，然后重新打开。如果问题仍然存在，请联系 HP 支持。</p>
重新开始和“检查墨盒”指示灯闪烁。	墨盒托架受阻。
所有指示灯均闪烁。	<p>HP All-in-One 发生严重错误。</p> <ol style="list-style-type: none"> 关闭打印机。 拔掉电源线。 等待一分钟，然后再插上电源线。 启动打印机。 <p>如果问题仍然存在，请联系 HP 支持。</p>

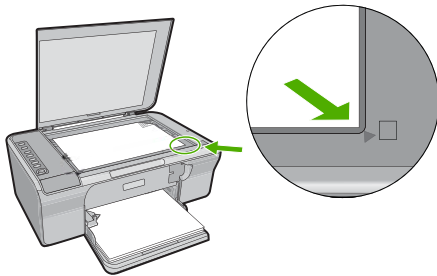
放入准备扫描和复印的原件

可以在 HP All-in-One 中放入多种类型和尺寸的纸张，包括 letter 或 A4 纸、照片纸、投影胶片和信封。有关详细信息，请参阅屏幕帮助。

在玻璃板上放入原件

- 将盖子拉升到打开位置。
- 将原件打印面朝下放到玻璃板的右上角。

 **提示** 要使复印尺寸正确，请确保玻璃板上没有胶带或其他异物。



- 合上盖子。

复印


可以从控制面板进行高质量复印。

从控制面板复印

1. 确保进纸盒中有纸。
2. 将原件打印面朝下放到玻璃板的右上角。
3. 按**纸张选择**按钮以设置纸张类型。
4. 按**开始复印 / 黑白**或**开始复印 / 彩色**。


扫描原件

对于玻璃板上的原始文档或图像，可以从您的计算机或 HP All-in-One 开始扫描。要使用扫描功能，HP All-in-One 必须已经与计算机连接并已打开。同时，扫描前，HP Photosmart 软件必须已经安装并在计算机上运行。

 **注意** 如果使用 Windows 2000，请使用 Windows 扫描仪而非按下**扫描**按钮。

扫描到计算机

1. 将原件打印面朝下放到玻璃板的右上角。

 **提示** 为了保证复印质量，请确保扫描仪的玻璃板清洁且没有异物粘在上面。

2. 按下**扫描**。
3. 对预览图像进行任何编辑，然后在完成时单击“接受”。

2 疑难排解和支持

本章提供了有关安装和配置问题的疑难排解信息以及一些有关操作的主题。有关疑难排解方面的详细信息，请参阅屏幕帮助。

如果在计算机上安装 HP Photosmart 软件之前，已经用 USB 电缆将产品连接到计算机上，这会引起许多问题。如果在软件的安装屏幕提示您将产品连接到计算机上之前就已经执行该操作，则必须遵循以下步骤：

软件安装疑难排解

1. 从计算机上拔下 USB 电缆。
2. 卸载软件（如果软件已安装）。有关详细信息，请参阅位于第 7 页的“[卸载并重新安装软件](#)”。
3. 重新启动计算机。
4. 关闭打印机，等候一分钟，然后再重新启动设备。
5. 重新安装 HP Photosmart 软件。

△ **小心** 在软件安装屏幕提示您连接 USB 电缆之前，不要将电缆连接到计算机上。

有关支持联系信息，请参阅本手册封底内页。

卸载并重新安装软件

如果安装不完全，或者在软件安装屏幕出现提示之前就将 USB 电缆连接到了计算机，则可能需要卸载然后重新安装软件。不要只是简单地从计算机中删除 HP All-in-One 应用程序文件。一定要使用安装 HP All-in-One 随附的软件时提供的卸载工具进行正确卸载。

从 Windows 计算机上卸载然后重新安装

1. 打开 Windows 控制面板，然后双击“添加或删除程序”。
2. 选择“HP Deskjet All-in-One 驱动程序”，然后单击“更改 / 删除”。
按照屏幕上的说明执行操作。
3. 断开打印机与计算机的连接。
4. 重新启动计算机。

📌 **注意** 重新启动计算机前，一定要断开产品的连接。重新安装完软件后，再将产品连接到计算机上。

5. 要重新安装软件，请将打印机 CD-ROM 插入计算机的 CD-ROM 驱动器中，然后按照启动屏幕上的说明安装软件。
如果没有出现启动屏幕，则请双击“我的电脑”，再双击带有 HP 徽标的“CD-ROM”图标，然后双击“setup.exe”。
6. 按照屏幕说明和打印机随附的《安装手册》中提供的说明进行操作。

软件安装完成后，“HP 数码成像监视器”图标将出现在 Windows 系统任务栏中。要验证软件的安装是否正确，请打印一个测试页。要了解如何打印测试页，请参阅屏幕帮助。

对于 Macintosh 用户：软件的自述文件和帮助文件提供了有关卸载和重新安装的说明。

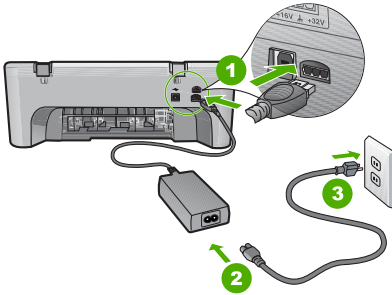
硬件安装问题疑难排解

本节包含 HP All-in-One 的硬件疑难排解信息。

产品无法开启

解决方法

- 确保在打印机和电源适配器两端插紧电源线。将电源线插到电源插座、电涌保护器或电源插线板上。



1	电源接头
2	电源线和适配器
3	电源插座

- 如果使用电源插线板，则请确保电源插线板的开关已打开。或者，试着将打印机的电源线直接插到电源插座上。
- 测试电源插座，确保其工作正常。插上一台可正常工作的设备，看设备是否有电。如果没电，则电源插座可能有问题。
- 如果将打印机插入到带开关的插座中，请确保开关插座的开关已经打开。如果将开关打开后仍无法通电，则可能是电源插座出了问题。

原因： 此打印机没有使用随附的电源线。

解决方法： 如果将**开 / 关机**按钮按得太快，打印机可能会没有响应。按下**开 / 关机**按钮一次。启动打印机可能需要几分钟。如果此时再次按**开 / 关机**按钮，可能会将打印机关闭。

△ **小心** 如果产品仍无法启动，则可能存在机械故障。切断产品的电源连接。与 HP 支持部门联系进行维修。

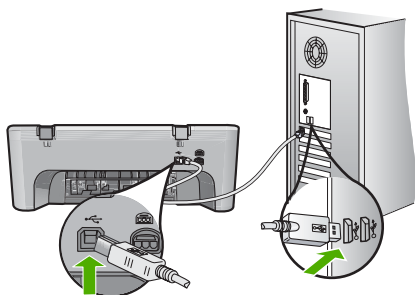
请访问：www.hp.com/support。如果出现提示信息，请选择您所在的国家（地区），然后单击“联系 HP”以获得联系技术支持的信息。

原因： 您按**开 / 关机**按钮的速度太快了。

连接了 USB 电缆，但是无法从计算机使用 HP All-in-One

解决方法： 连接 USB 电缆之前，必须首先安装打印机随附的软件。在安装过程中，除非屏幕说明提示您插入 USB 电缆，否则请不要将其插入。没有显示提示就插入 USB 电缆会导致错误。

安装完软件之后，就可以直接使用 USB 电缆将计算机连接到打印机。只需将 USB 电缆的一端插入到计算机的背面，将另一端插入到打印机的背面。可以连接到计算机背面的任何一个 USB 端口中。

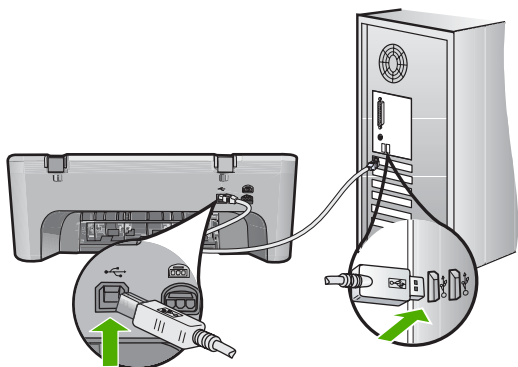


有关安装软件和连接 USB 电缆的详细信息，请参阅 HP All-in-One 随附的《安装手册》。

HP All-in-One 不打印

解决方法： 如果打印机和计算机相互无法通信，请尝试执行以下操作：

- 查看打印机上的**开 / 关机**按钮。如果该指示灯未点亮，则表示打印机已关机。确保电源线紧紧地连接到打印机和电源适配器上并且插入电源插座中。按下**开 / 关机**按钮启动打印机。
- 确保已安装墨盒。
- 确保进纸盒中有纸。
- 确保打印机没有卡纸。
- 检查墨盒托架是否卡纸。
打开前检修门，以便对墨盒托架进行检查。取出卡住墨盒托架的任何异物，包括包装材料。关闭打印机，然后重新启动该设备。
- 打印一个测试页，确认该打印机是否能够打印并与计算机进行通信。有关详细信息，请参阅屏幕帮助。
- 确保打印队列未处于暂停状态。如果打印队列已被暂停，请选择相应的设置来恢复打印。有关访问打印队列的详细信息，请参阅计算机上安装的操作系统的附带文档。
- 检查 USB 电缆。如果使用的电缆太旧，该电缆本身可能已经损坏。试着将 USB 电缆连接到其他产品上，看它是否完好。如果有问题，则可能需要更换 USB 电缆。另外，请确认电缆的长度不超过 3 米。
- 请确保您的计算机可以使用 USB，并且使用的是受支持的操作系统。有关详细信息，请参阅自述文件。
- 检查打印机和计算机之间的连接。确认 USB 电缆已牢固地插入到打印机后面的 USB 端口中。确保 USB 电缆的另一端插入到计算机的 USB 端口。正确连接电缆后，请关闭打印机，然后重新启动。



- 如果是通过 USB 集线器连接该产品，请确保集线器的电源已打开。如果集线器的电源已打开，请尝试直接连接到计算机。
- 检查其他打印机或扫描仪。可能需要从计算机上拔掉旧产品。
- 试着将 USB 电缆连接到计算机的另一个 USB 端口上。检查完连接之后，请尝试重新启动计算机。关闭打印机，然后再启动打印机。
- 检查完连接之后，请尝试重新启动计算机。关闭打印机，然后再启动打印机。
- 如有必要，请卸载与打印机一同安装的软件，然后重新安装。

有关安装 HP All-in-One 并将其与计算机相连的详细信息，请参阅 HP All-in-One 随附的《安装手册》。

清除卡纸

有关清除卡纸的信息，请参阅屏幕帮助。有关访问屏幕帮助的详细说明，请参阅位于第 10 页的“[屏幕帮助](#)”。

墨盒疑难排解

有关墨盒问题疑难排解的信息，请参阅屏幕帮助。有关访问屏幕帮助的详细说明，请参阅位于第 10 页的“[屏幕帮助](#)”。

查找更多信息

在很多印刷和屏幕资源中都提供了 HP All-in-One 的安装和使用信息。

安装手册

《安装手册》提供了 HP All-in-One 和软件的安装说明。请务必依次执行《安装手册》中的步骤。

如果在安装过程中遇到问题，请参阅《安装手册》最后一节中的“[疑难排解](#)”，或者参阅本手册中的[位于第 7 页的“疑难排解和支持”](#)。

屏幕帮助

屏幕帮助详细介绍了本手册中没有描述的 HP All-in-One 功能，包括那些只有在使用 HP All-in-One 随附的软件时才可用的功能。屏幕帮助也包含一些规范信息和环境信息。

访问屏幕帮助

- **Windows:** 单击“开始 > 所有程序 > HP > Deskjet F4200 All-in-One series > 帮助”。
要安装屏幕帮助，请将软件 CD 插入计算机，然后按照屏幕上的说明执行操作。
- **Macintosh:** 单击“帮助 > Mac 帮助 > 资料库 > HP 产品帮助”。

HP 网站

如果能访问 Internet，可以从 HP 网站 www.hp.com/support 获得帮助和支持。该网站提供技术支持、驱动程序、耗材和订购信息。

HP 支持

可以通过电话或互联网联系 HP 支持。支持的选项和可用性随产品、国家 / 地区和语言的不同而不同。

HP 电话支持

有关技术支持的电话号码列表，请参阅本手册封底内页的内容。
支持的选项和可用性随产品、国家 / 地区和语言的不同而不同。

电话支持期

拉丁美洲（包括墨西哥）地区用户可享有一年电话支持服务。要确定北美、东欧、中东、亚太地区和非洲地区用户的电话支持期，请访问 www.hp.com/support。
您需要支付电话公司的标准电话费。

电话支持期过后

电话支持期过后，仍可获得 HP 的支持，但需要支付一定的费用。
请与 HP 经销商联系或拨打所在国家 / 地区的支持电话号码，以了解更多支持选项。

致电 HP 之前

1. 确保：
 - a. HP All-in-One 已插上电源且已打开。
 - b. 指定的墨盒安装正确。
 - c. 已经将推荐的纸张正确放入进纸盒中。
2. 重置 HP All-in-One：
 - a. 按下**开 / 关机**按钮关闭 HP All-in-One。
 - b. 拔掉 HP All-in-One 后面的电源线。
 - c. 重新插上 HP All-in-One 的电源线。
 - d. 按下**开 / 关机**按钮打开 HP All-in-One。
3. 可获得下列信息：
 - a. HP All-in-One 的具体名称，即控制面板上显示的名称。
 - b. 打印自检报告。有关详细信息，请参阅屏幕帮助。
 - c. 准备详细的问题描述。
 - d. 准备好您的序列号和服务 ID（这些信息可从自检报告中获得）。
 - e. 应在 HP All-in-One 打印机旁边给 HP 支持打电话。

技术信息

本节提供了有关 HP All-in-One 的技术规格以及国际规范信息。有关其他规范和环境规格信息，请参阅屏幕帮助。


有关其他规定和环境信息，包括《符合性声明》，请参阅屏幕帮助。

系统要求

可以在自述文件中找到软件的系统要求。

纸张规格

- 进纸盒容量：普通纸最多 80 张（65-90 gsm 纸张）
- 出纸盒容量：普通纸最多 50 张（65-90 gsm 纸张）

 **注意** 有关支持的介质尺寸的完整列表，请参阅打印机软件。

物理规格

- 高：161.5 mm
- 宽：437.5 mm
- 深（进纸盒朝上）：290.4 mm
- 重量：4.9 kg

电源规格

- 功耗：打印时平均 20 W
- 输入电压：AC 100-240 V ~ 1 A 50 - 60 Hz
- 输出电压：DC 32 V===375 mA，16 V===500mA
- 电源：0957-2242，AC 100-240 V (±10%)，50-60 Hz (±3 Hz)
- 电源：0957-2250，AC 100-240 V (±10%)，50-60 Hz (±3 Hz)

 **注意** 只使用 HP 提供的电源适配器。

环境规格

- 极限工作条件
 - 温度：5° C-40° C
 - 相对湿度 15%-80%（无凝结）
- 建议的工作条件
 - 温度：15° C-30° C
 - 湿度：相对湿度 20%-80%（无凝结）
- 极限运输（存放）条件
 - 温度：-40° C-60° C
 - 湿度：相对湿度 5%-90%（无凝结）
- 在电磁场强的区域，HP All-in-One 的打印结果可能会稍微变形
- HP 建议使用长度不超过 3 米的 USB 电缆，以便将因潜在在电磁场而导致的干扰降至最低程度

规范声明

HP All-in-One 符合您所在的国家 / 地区的产品规范要求。有关规范声明的完整列表，请参阅屏幕帮助。

标准型号

为了便于识别，为产品指定了一个“标准型号”。本产品的标准型号为 VCVRA-0811。不要将此标准型号与产品的市场名称（如 HP Deskjet F4200 All-in-One series 等）或产品编号（如 CB656A 等）相混淆。

HP 产品	有限保修期限
软件媒体	90 天
打印机	1 年
打印或墨盒	直到 HP 墨水用完，或到达印在墨盒上的“保修结束”日期，视何者为先。本保修不涵盖重新灌注、再加工、整修、误用，或被篡改的 HP 墨水产品。
附件	90 天

A. 有限保修的范围

1. 惠普 (HP) 向最终用户保证，在上述指定的保修期内，上述指定的 HP 产品自购买之日起无材料及工艺上的缺陷。
2. 对于软件产品，HP 的有限保修仅适用于无法执行编程指令的故障。HP 不保证产品工作时不会中断或无错误。
3. HP 的有限保修仅限于由正常使用产品而产生的缺陷，不适用于任何其他问题，包括因以下原因而产生的问题：
 - a. 不正确的维护或调整；
 - b. 使用非 HP 提供或支持的软件、介质、部件或耗材；
 - c. 在产品技术规格以外的条件下操作；
 - d. 未经授权的调整或误用。
4. 对于 HP 打印机产品，使用非 HP 墨盒或重新灌注的墨盒既不影响对客户的保修也不影响与客户签订的任何 HP 支持合同。但是，如果打印机由于使用非 HP 墨盒或重新灌注的墨盒而过期的墨盒而发生故障或损坏，HP 在维修打印机时将根据具体故障或损坏，收取标准工时费和材料费。
5. 如果 HP 在适用的保修期内收到符合 HP 保修条件的任何产品的缺陷的通知，HP 将自行决定对有缺陷的产品进行维修或更换。
6. 如果 HP 无法适时维修或更换符合 HP 保修条件的有缺陷产品，HP 将在接到缺陷通知后的合理时间内，退回该产品的全额货款。
7. 在客户将有缺陷的产品退回 HP 之前，HP 不承担维修、更换或退款的义务。
8. 更换的产品可能为全新产品或相当于全新产品，前提是它的功能至少与被更换的产品相当。
9. HP 产品可能包含性能等同于新部件的再加工部件、组件或材料。
10. HP 的有限保修在任何销售保修范围内的 HP 产品的国家或地区均有效。可与授权的 HP 服务机构签订其他保修服务（如现场服务）合同，这些机构分布在由 HP 或授权进口商销售 HP 产品的国家/地区。

B. 有限保修

在当地法律允许范围内，HP 及其第三方供应商，对有关 HP 的产品，无论是以明示或默示的形式，均没有任何其他保修或条件并特别声明没有任何用于特定目的适销性、质量满意度以及适用性的默示保修或条件。

C. 责任限制

1. 在当地法规允许的范围内，本保修声明中提供的补偿是对用户的唯一补偿。
2. 在当地法规允许的范围内，除了本保修声明中特别规定的责任外，在任何情况下，无论是根据合同、民事侵权行为或其他法律准则，无论是否告知产生此类损失的可能性，HP 或其第三方供应商对直接、特殊、偶发、继发的损失概不承担责任。

D. 当地法律

1. 此保修声明赋予用户特定的法律权利。用户还可能拥有其他权利，具体情况视州（美国）、省（加拿大）及国家/地区（世界其他地方）而异。
2. 如果本保修声明与当地法规发生矛盾，则应视为已修改以便与当地法规保持一致。根据这类当地法规，本保修声明中的某些责任免除和限制可能不适用于用户。例如，美国的某些州及美国以外的某些政府（包括加拿大的某些省），可能会：
 - a. 排除本保修声明中的责任免除和限制条款对用户法定权利的限制（例如英国）；
 - b. 限制制造商实施这种责任免除或限制的能力；或者
 - c. 赋予客户附加的保修权利，指定默示保修的期限（对这种默示保修制造商不得拒绝），或者不允许制造商对默示保修的期限加以限制。
3. 除非另有法律许可，本声明中的保修条款不得排除、限制或修改适用于此产品销售的强制性法律权利，而是对该权利的补充。

HP Deskjet F4200 All-in-One series

Basics Guide

English



Contents

1 HP All-in-One overview

The HP All-in-One at a glance.....	2
Control panel buttons.....	3
Status light overview.....	4
Load originals for scanning and copying.....	5
Make a copy.....	6
Scan an original.....	6

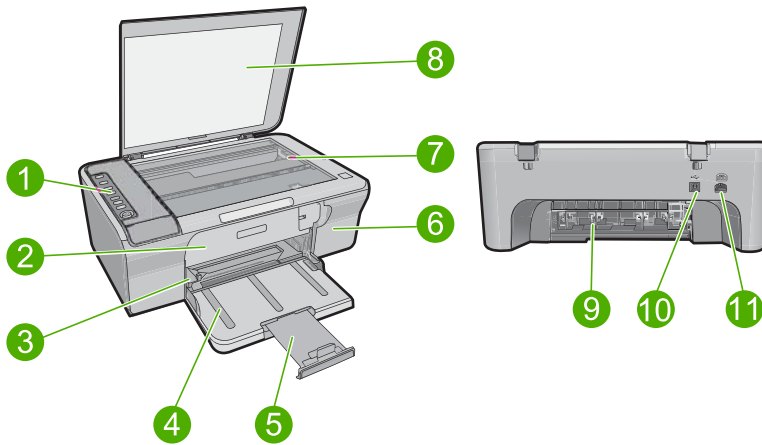
2 Troubleshooting and support

Uninstall and reinstall the software.....	7
Hardware setup troubleshooting.....	7
Clear paper jams.....	10
Print cartridge troubleshooting.....	10
Find more information.....	10
Setup Guide.....	10
Onscreen Help.....	10
HP Web site.....	11
HP support.....	11
HP support by phone.....	11
Phone support period.....	11
After the phone support period.....	11
Before calling HP Support.....	11
Technical information.....	11
System requirements.....	12
Paper specifications.....	12
Physical specifications.....	12
Power specifications.....	12
Environmental specifications.....	12
Regulatory notices.....	12
Regulatory model identification number.....	12
Warranty.....	13

1 HP All-in-One overview

The HP Deskjet F4200 All-in-One series is a versatile device that gives you easy-to-use copying, scanning, and printing. For information about the full range of features and functions, see the onscreen Help.

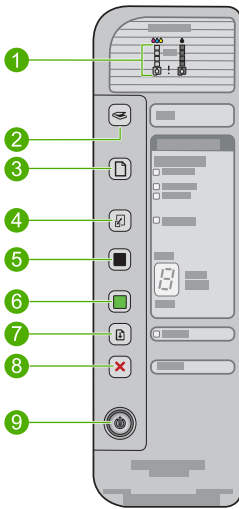
The HP All-in-One at a glance






Label	Description
1	Control panel
2	Front access door
3	Paper-width guide
4	Input tray
5	Tray extender
6	Print cartridge door
7	Glass
8	Lid backing
9	Rear access door
10	Rear USB port
11	Power connection*

* Use only with the power adapter supplied by HP.

Control panel buttons

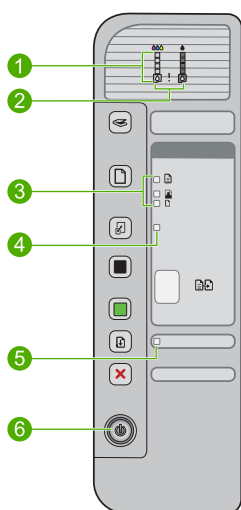


Label	Icon	Name and Description
1		<p>Ink Level lights: Show ink level information for each print cartridge, four for the tri-color cartridge and four for the black cartridge.</p> <p>Check Print Cartridge lights: Indicates the need to reinsert the specified print cartridge, replace the print cartridge, or close the print cartridge door. The Black ink icon light indicates that the problem is with the black print cartridge, and the Color ink icon light indicates that the problem is with the tri-color print cartridge.</p>
2		<p>Scan: Starts scanning the original currently on the glass. A Scan button press is ignored if the HP All-in-One is busy with any other job. The Scan button functions only when the computer is on.</p>
3		<p>Paper Selection: Changes the paper type setting to either plain, large photo, or small photo paper. Make sure the appropriate paper type is loaded in the input tray. The default paper type setting is Plain.</p> <p>The Paper Selection lights indicate the currently selected paper size and type.</p>
4		<p>Resize to Fit / Fit to Page: Scales the original to the maximum size to fit within the margins of the selected paper size for copying.</p>
5		<p>Start Copy Black: Starts a black-and-white copy job.</p> <p>Press this button multiple times to specify multiple black copies. The printer will start printing shortly after the number of copies have been selected. The number of copies to be printed is shown to the right of this button.</p>
6		<p>Start Copy Color: Starts a color copy job.</p> <p>Press this button multiple times to specify multiple color copies. The printer will start printing shortly after the number of copies have been selected. The number of copies to be printed is shown to the right of this button.</p>

Label	Icon	Name and Description
7		Resume: Instructs the HP All-in-One to continue after a problem is solved. A blinking Resume light next to the Resume button indicates the need to load paper or clear a paper jam.
8		Cancel: Stops a print, copy, or scan job.
9		On: Turns the HP All-in-One on or off. The On button is lit when the HP All-in-One is powered on.

Status light overview

Several indicator lights inform you of the status of the HP All-in-One.



Label	Description
1	Ink Level lights
2	Check Print Cartridge lights
3	Paper Selection lights (for the Paper Selection button)
4	Resize to Fit / Fit to Page light
5	Resume light
6	On light

The following table describes common situations and explains what the lights mean.


Light status	What it means
All lights are off.	The HP All-in-One is turned off. Press the On button to turn on the product.
The On light is blinking.	The HP All-in-One is busy printing, scanning, copying, or aligning the print cartridges.
The On light blinks quickly for 3 seconds and then is on steady.	You pressed a button while the HP All-in-One is already busy printing, scanning, copying, or aligning the print cartridges.
The On light blinks for 20 seconds and then is steady.	You pressed the Scan button and there was no response from the computer.
The Resume light is blinking.	<ul style="list-style-type: none"> The HP All-in-One is out of paper. The HP All-in-One has a paper jam.
The Check Print Cartridge light is blinking.	<ul style="list-style-type: none"> The print cartridge door is open. The print cartridges are missing or not seated correctly. The tape was not removed from the print cartridge. The print cartridge is not intended for use in this HP All-in-One. The print cartridge might be defective.
The On , Resume , and Check Print Cartridge lights are blinking.	Scanner failure. Turn off the HP All-in-One, then turn it on again. If the problem persists, contact HP Support.
The Resume and Check Print Cartridge lights are blinking.	The print cartridge carriage is stalled.
All lights are blinking.	<p>The HP All-in-One has a fatal error.</p> <ol style="list-style-type: none"> Turn off the product. Unplug the power cord. Wait a minute, then plug the power cord back in. Turn on the product. <p>If the problem persists, contact HP Support.</p>

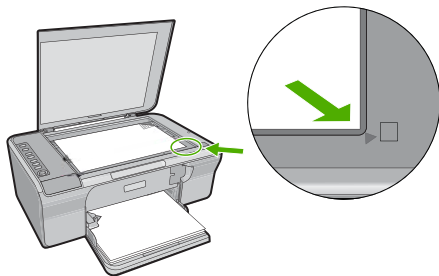
Load originals for scanning and copying

You can load many different types and sizes of paper in the HP All-in-One, including letter or A4 paper, photo paper, transparencies, and envelopes. For more information, see the onscreen Help.

To load an original on the glass

- Lift the lid to the open position.
- Load your original print side down on the right front corner of the glass.

 **TIP:** To get the correct copy size, make sure that there is no tape or other foreign object on the glass.



3. Close the lid.

Make a copy


You can make quality copies from the control panel.

To make a copy from the control panel

1. Make sure you have paper loaded in the input tray.
2. Load your original print side down on the right front corner of the glass.
3. Press the **Paper Selection** button to set the paper type.
4. Press **Start Copy Black** or **Start Copy Color**.


Scan an original

For original documents or images placed on the glass, you can start a scan from your computer or from the HP All-in-One. To use the scan features, the HP All-in-One and computer must be connected and turned on. The HP Photosmart Software must also be installed and running on your computer prior to scanning.

 **NOTE:** If you are using Windows 2000, use the Windows Scanner wizard instead of pressing the **Scan** button.

To scan to a computer

1. Load your original print side down on the right front corner of the glass.

 **TIP:** For quality copies, ensure that the scanner glass is clean and that there are no foreign materials adhering to it.

2. Press **Scan**.
3. Make any edits to the preview image, and then click **Accept** when you are finished.

2 Troubleshooting and support

This chapter contains troubleshooting information for installation and configuration issues and some operational topics. For more troubleshooting information, see the onscreen Help.

Many issues are caused when the product is connected to the computer using a USB cable before the HP Photosmart software is installed on the computer. If you connected the product to your computer before the software installation screen prompts you to do so, you must follow these steps:

To troubleshoot software installation

1. Disconnect the USB cable from the computer.
2. Uninstall the software (if you have already installed it). For more information, see [“Uninstall and reinstall the software” on page 7](#).
3. Restart your computer.
4. Turn off the product, wait one minute, then restart it.
5. Reinstall the HP Photosmart software.

△ **CAUTION:** Do not connect the USB cable to the computer until prompted by the software installation screen.


For support contact information, see the inside back cover of this guide.

Uninstall and reinstall the software

If your installation is incomplete, or if you connected the USB cable to the computer before prompted by the software installation screen, you might need to uninstall and then reinstall the software. Do not simply delete the HP All-in-One application files from your computer. Make sure to remove them properly using the uninstall utility provided when you installed the software that came with the HP All-in-One.

To uninstall from a Windows computer and then reinstall

1. Open the Windows control panel and double-click **Add or Remove Programs**.
2. Select **HP Deskjet All-in-One Driver Software**, and then click **Change/Remove**. Follow the onscreen instructions.
3. Disconnect the product from your computer.
4. Restart your computer.

 **NOTE:** It is important that you disconnect the product before restarting your computer. Do not connect the product to your computer until after you have reinstalled the software.

5. To reinstall the software, insert the product CD-ROM into your computer's CD-ROM drive and follow the instructions on the startup screen to install the software.
If the startup screen does not appear, double-click **My Computer**, double-click the **CD-ROM** icon with the HP logo, and then double-click **setup.exe**
6. Follow the onscreen instructions and the instructions provided in the Setup Guide that came with the product.

When the software installation is complete, the **HP Digital Imaging Monitor** icon appears in the Windows system tray.

To verify that the software is properly installed, print a test page. For printing a test page, see the onscreen Help.

For Macintosh users: Uninstall and reinstall directions are in the Readme file and in the Help files for the software.

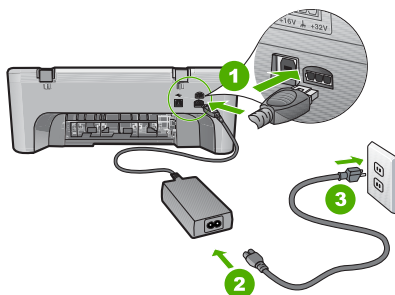
Hardware setup troubleshooting

This section contains hardware troubleshooting information for the HP All-in-One.

The product will not turn on

Solution

- Make sure the power cord is firmly connected to both the product and the power adapter. Plug the power cord into a power outlet, surge protector, or power strip.



1	Power connection
2	Power cord and adapter
3	Power outlet

- If you are using a power strip, make sure the power strip is on. Or, try plugging the product directly into a power outlet.
- Test the power outlet to make sure it is working. Plug in an appliance that you know works, and see if the appliance has power. If not, then there might be a problem with the power outlet.
- If you plugged the product into a switched outlet, make sure the outlet is switched on. If it is switched to on but still does not work, then there might be a problem with the power outlet.

Cause: The product was not being used with the power cord it was shipped with.

Solution: The product might not respond if you press the **On** button too quickly. Press the **On** button once. It might take a few minutes for the product to turn on. If you press the **On** button again during this time, you might turn the product off.

△ **CAUTION:** If the product still does not turn on, it might have a mechanical failure. Unplug the product from the power outlet.

Contact HP support for service.

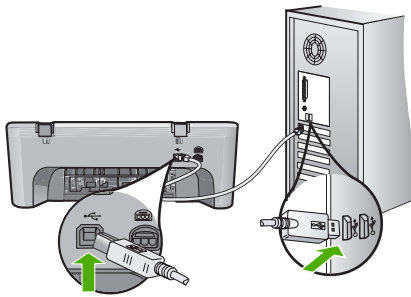
Go to: www.hp.com/support. If prompted, choose your country/region, and then click **Contact HP** for information on calling for technical support.

Cause: You pressed the **On** button too quickly.

I connected the USB cable, but I am having problems using the HP All-in-One with my computer

Solution: You must first install the software that came with the product before connecting the USB cable. During installation, do not plug in the USB cable until prompted by the onscreen instructions. Connecting the USB cable before prompted can cause errors.

Once you have installed the software, connecting your computer to the product with a USB cable is straightforward. Simply plug one end of the USB cable into the back of your computer and the other into the back of the product. You can connect to any USB port on the back of your computer.

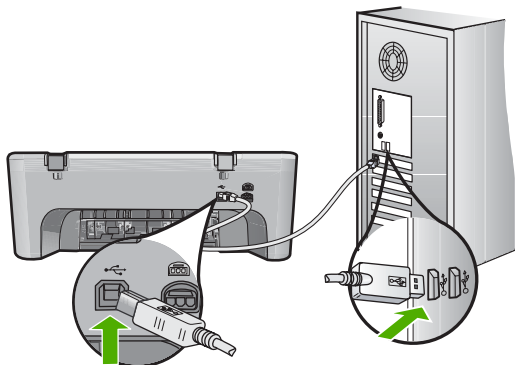


For more information on installing the software and connecting the USB cable, see the Setup Guide that came with the HP All-in-One.

The HP All-in-One does not print

Solution: If the product and computer are not communicating with each other, try the following:

- Look at the **On** button located on the product. If it is not lit, the product is turned off. Make sure the power cord is firmly connected to both the product and the power adapter and plugged into a power outlet. Press the **On** button to turn on the product.
- Make sure the print cartridges are installed.
- Make sure you have paper loaded in the input tray.
- Make sure that the product does not have a paper jam.
- Check that the print carriage is not jammed.
Open the front access door to access the print carriage area. Remove any objects that are blocking the print carriage, including any packing materials. Turn the product off and then turn it on again.
- Print a test page to see if the product can print and is communicating with the computer. For more information, see the onscreen Help.
- Make sure that the print queue is not paused. If it is, choose the appropriate setting to resume printing. For more information about accessing the print queue, see the documentation that came with the operating system installed on your computer.
- Check the USB cable. If you are using an older cable, it might not be working properly. Try connecting it to another product to see if the USB cable works. If you experience problems, the USB cable might need to be replaced. Also verify that the cable does not exceed 3 meters (9.8 feet) in length.
- Make sure your computer is USB ready and that you are using a supported operating system. For more information, see the Readme file.
- Check the connection from the product to your computer. Verify that the USB cable is securely plugged into the USB port on the back of the product. Make sure the other end of the USB cable is plugged into a USB port on your computer. After the cable is connected properly, turn the product off and then on again.



- If you are connecting the product through a USB hub, make sure the hub is turned on. If the hub is on, try connecting directly to your computer.
- Check other printers or scanners. You might need to disconnect older products from your computer.
- Try connecting the USB cable to another USB port on your computer. After you check the connections, try restarting your computer. Turn the product off and then on again.
- After you check the connections, try restarting your computer. Turn the product off and then on again.
- If necessary, remove and then install the software you installed with the product again.

For more information on setting up the HP All-in-One and connecting it to your computer, see the Setup Guide that came with the HP All-in-One.

Clear paper jams

For information about clearing a paper jam, see the onscreen Help. For instructions on accessing the onscreen Help, see [“Onscreen Help” on page 10](#).

Print cartridge troubleshooting

For information about troubleshooting print cartridges, see the onscreen Help. For instructions on accessing the onscreen Help, see [“Onscreen Help” on page 10](#).

Find more information

A variety of resources, both printed and onscreen, provide information about setting up and using the HP All-in-One.

Setup Guide

The Setup Guide provides instructions for setting up your HP All-in-One and installing software. Make sure you follow the steps in the Setup Guide in order.

If you have problems during setup, see Troubleshooting in the last section of the Setup Guide, or see [“Troubleshooting and support” on page 7](#) in this guide.

Onscreen Help

The onscreen Help provides detailed instructions on features of your HP All-in-One that are not described in this guide, including features that are only available using the software you installed with your HP All-in-One. The onscreen help also provides regulatory and environmental information.

To access the onscreen Help

- **Windows:** Click **Start > All Programs > HP > Deskjet F4200 All-in-One series > Help**. To install the onscreen Help, insert the software CD in your computer and follow the onscreen instructions.
- **Macintosh:** Click **Help > Mac Help > Library > HP Product Help**.

HP Web site

If you have Internet access, you can get help and support from the HP Web site at www.hp.com/support. This Web site offers technical support, drivers, supplies, and ordering information.

HP support

You can contact HP Support by phone and online. Support options and availability vary by product, country/region, and language.

HP support by phone

For a list of support phone numbers, see the inside back cover of this guide. Support options and availability vary by product, country/region, and language.

Phone support period

One year of phone support is available in Latin America (including Mexico). To determine the duration of phone support in North America, Eastern Europe, the Middle East, Asia Pacific, and Africa, go to www.hp.com/support.

Standard phone company charges apply.

After the phone support period

After the phone support period, help is available from HP at an additional cost.

Contact your HP dealer or call the support phone number for your country/region to learn more about support options.

Before calling HP Support

1. Make sure that:
 - a. The HP All-in-One is plugged in and turned on.
 - b. The specified print cartridges are installed correctly.
 - c. The recommended paper is properly loaded in the input tray.
2. Reset the HP All-in-One:
 - a. Turn off the HP All-in-One by pressing the **On** button.
 - b. Unplug the power cord from the back of the HP All-in-One.
 - c. Plug the power cord back into the HP All-in-One.
 - d. Turn on the HP All-in-One by pressing the **On** button.
3. Have the following information available:
 - a. Specific name of the HP All-in-One, as it appears on the control panel.
 - b. Print a self-test report. For more information, see the onscreen Help.
 - c. Be prepared to describe your problem in detail.
 - d. Have your serial number and service ID ready, found on the self-test report.
 - e. Be near the HP All-in-One printer when you call HP Support.

Technical information

The technical specifications and international regulatory information for the HP All-in-One are provided in this section. For additional regulatory and environmental specifications, see the onscreen help.

For additional regulatory and environmental information, including the Declaration of Conformity statement, see the onscreen Help.

System requirements

Software system requirements are located in the Readme file.

Paper specifications

- Input tray capacity: Plain paper sheets: Up to 80 (65-90 gsm (16-24 lb.) paper)
- Output tray capacity: Plain paper sheets: Up to 50 (65-90 gsm (16-24 lb.) paper)



NOTE: For a complete list of supported media sizes, see the printer software.

Physical specifications

- Height: 161.5 mm (6.36 inches)
- Width: 437.5 mm (17.22 inches)
- Depth (Input tray up): 290.4 mm (11.43 inches)
- Weight: 4.9 kg (10.8 pounds)

Power specifications

- Power consumption: 20 watts (average printing)
- Input voltage: AC 100 to 240 V ~ 1 A 50-60 Hz
- Output voltage: DC 32 V===375 mA, 16 V===500mA
- Power supply: 0957-2242, AC 100-240 V (±10%), 50-60 Hz (±3 Hz)
- Power supply: 0957-2250, AC 100-240 V (±10%), 50-60 Hz (±3 Hz)



NOTE: Use only with the power adapter supplied by HP.

Environmental specifications

- Maximum operating conditions
 - Temperature: 5° to 40°C (41° to 104°F)
 - Humidity: 15% to 80% RH non-condensing
- Recommended operating conditions
 - Temperature: 15° to 30°C (59° to 86°F)
 - Humidity: 20% to 80% RH non-condensing
- Maximum shipping (storage) conditions
 - Temperature: -40° to 60°C (-40° to 140°F)
 - Humidity: 5% to 90% RH non-condensing
- In the presence of high electromagnetic fields, it is possible the output from the HP All-in-One may be slightly distorted
- HP recommends using a USB cable less than or equal to 3 m (10 feet) in length to minimize injected noise due to potential high electromagnetic fields

Regulatory notices

The HP All-in-One meets product requirements from regulatory agencies in your country/region. For a complete listing of regulatory notices, see the onscreen Help.

Regulatory model identification number

For regulatory identification purposes, your product is assigned a Regulatory Model Number. The Regulatory Model Number for your product is VCVRA-0811. This regulatory number should not be confused with the marketing name (HP Deskjet F4200 All-in-One series, etc.) or product numbers (CB656A, etc.).

Warranty

HP product	Duration of limited warranty
Software Media	90 days
Printer	1 year
Print or Ink cartridges	Until the HP ink is depleted or the "end of warranty" date printed on the cartridge has been reached, whichever occurs first. This warranty does not cover HP ink products that have been refilled, remanufactured, refurbished, misused, or tampered with.
Accessories	1 year unless otherwise stated

A. Extent of limited warranty

- Hewlett-Packard (HP) warrants to the end-user customer that the HP products specified above will be free from defects in materials and workmanship for the duration specified above, which duration begins on the date of purchase by the customer.
- For software products, HP's limited warranty applies only to a failure to execute programming instructions. HP does not warrant that the operation of any product will be interrupted or error free.
- HP's limited warranty covers only those defects that arise as a result of normal use of the product, and does not cover any other problems, including those that arise as a result of:
 - Improper maintenance or modification;
 - Software, media, parts, or supplies not provided or supported by HP;
 - Operation outside the product's specifications;
 - Unauthorized modification or misuse.
- For HP printer products, the use of a non-HP cartridge or a refilled cartridge does not affect either the warranty to the customer or any HP support contract with the customer. However, if printer failure or damage is attributable to the use of a non-HP or refilled cartridge or an expired ink cartridge, HP will charge its standard time and materials charges to service the printer for the particular failure or damage.
- If HP receives, during the applicable warranty period, notice of a defect in any product which is covered by HP's warranty, HP shall either repair or replace the product, at HP's option.
- If HP is unable to repair or replace, as applicable, a defective product which is covered by HP's warranty, HP shall, within a reasonable time after being notified of the defect, refund the purchase price for the product.
- HP shall have no obligation to repair, replace, or refund until the customer returns the defective product to HP.
- Any replacement product may be either new or like-new, provided that it has functionality at least equal to that of the product being replaced.
- HP products may contain remanufactured parts, components, or materials equivalent to new in performance.
- HP's Limited Warranty Statement is valid in any country where the covered HP product is distributed by HP. Contracts for additional warranty services, such as on-site service, may be available from any authorized HP service facility in countries where the product is distributed by HP or by an authorized importer.

B. Limitations of warranty

TO THE EXTENT ALLOWED BY LOCAL LAW, NEITHER HP NOR ITS THIRD PARTY SUPPLIERS MAKES ANY OTHER WARRANTY OR CONDITION OF ANY KIND, WHETHER EXPRESS OR IMPLIED WARRANTIES OR CONDITIONS OF MERCHANTABILITY, SATISFACTORY QUALITY, AND FITNESS FOR A PARTICULAR PURPOSE.

C. Limitations of liability

- To the extent allowed by local law, the remedies provided in this Warranty Statement are the customer's sole and exclusive remedies.
- TO THE EXTENT ALLOWED BY LOCAL LAW, EXCEPT FOR THE OBLIGATIONS SPECIFICALLY SET FORTH IN THIS WARRANTY STATEMENT, IN NO EVENT SHALL HP OR ITS THIRD PARTY SUPPLIERS BE LIABLE FOR DIRECT, INDIRECT, SPECIAL, INCIDENTAL, OR CONSEQUENTIAL DAMAGES, WHETHER BASED ON CONTRACT, TORT, OR ANY OTHER LEGAL THEORY AND WHETHER ADVISED OF THE POSSIBILITY OF SUCH DAMAGES.

D. Local law

- This Warranty Statement gives the customer specific legal rights. The customer may also have other rights which vary from state to state in the United States, from province to province in Canada, and from country to country elsewhere in the world.
- To the extent that this Warranty Statement is inconsistent with local law, this Warranty Statement shall be deemed modified to be consistent with such local law. Under such local law, certain disclaimers and limitations of this Warranty Statement may not apply to the customer. For example, some states in the United States, as well as some governments outside the United States (including provinces in Canada), may:
 - Preclude the disclaimers and limitations in this Warranty Statement from limiting the statutory rights of a consumer (e.g., the United Kingdom);
 - Otherwise restrict the ability of a manufacturer to enforce such disclaimers or limitations; or
 - Grant the customer additional warranty rights, specify the duration of implied warranties which the manufacturer cannot disclaim, or allow limitations on the duration of implied warranties.
- THE TERMS IN THIS WARRANTY STATEMENT, EXCEPT TO THE EXTENT LAWFULLY PERMITTED, DO NOT EXCLUDE, RESTRICT, OR MODIFY, AND ARE IN ADDITION TO, THE MANDATORY STATUTORY RIGHTS APPLICABLE TO THE SALE OF THE HP PRODUCTS TO SUCH CUSTOMERS.

HP Limited Warranty

Dear Customer,

You will find below the name and address of the HP entity responsible for the performance of the HP Limited Warranty in your country.

You may have additional statutory rights against the seller based on your purchase agreement. Those rights are not in any way affected by this HP Limited Warranty.

Ireland: Hewlett-Packard Ireland Ltd, 30 Herbert Street IRL-Dublin 2

United Kingdom: Hewlett-Packard Ltd, Cain Road, Bracknell, GB-Berks RG12 1HN



www.hp.com/support

Africa (English speaking)	+27 11 2345872	
Afrique (francophone)	+33 1 4993 9230	
	021 67 22 80	الجزائر
Argentina (Buenos Aires)	54-11-4708-1600	
Argentina	0-800-555-5000	
Australia	www.hp.com/support/australia	
Österreich	www.hp.com/support	
	17212049	البحرين
België	www.hp.com/support	
Belgique	www.hp.com/support	
Brasil (Sao Paulo)	55-11-4004-7751	
Brasil	0-800-709-7751	
Canada	1-(800)-474-6836 (1-800 hp invent)	
Central America & The Caribbean	www.hp.com/support	
Chile	800-360-999	
中国	www.hp.com/support/china	
Colombia (Bogotá)	571-606-9191	
Colombia	01-8000-51-4746-8368	
Costa Rica	0-800-011-1046	
Česká republika	810 222 222	
Danmark	www.hp.com/support	
Ecuador (Andinatel)	1-999-119 ☎ 800-711-2884	
Ecuador (Pacifitel)	1-800-225-528 ☎ 800-711-2884	
	(02) 6910602	مصر
El Salvador	800-6160	
España	www.hp.com/support	
France	www.hp.com/support	
Deutschland	www.hp.com/support	
Ελλάδα (από το εξωτερικό)	+ 30 210 6073603	
Ελλάδα (εντός Ελλάδας)	801 11 75400	
Ελλάδα (από Κύπρο)	800 9 2654	
Guatemala	1-800-711-2884	
香港特別行政區	www.hp.com/support/hongkong	
Magyarország	06 40 200 629	
India	www.hp.com/support/india	
Indonesia	www.hp.com/support	
	+971 4 224 9189	العراق
	+971 4 224 9189	الكويت
	+971 4 224 9189	لبنان
	+971 4 224 9189	قطر
	+971 4 224 9189	اليمن
Ireland	www.hp.com/support	
	1-700-503-048	ישראל
Italia	www.hp.com/support	
Jamaica	1-800-711-2884	

日本	www.hp.com/support/japan	
	0800 222 47	الأردن
한국	www.hp.com/support/korea	
Luxembourg	www.hp.com/support	
Malaysia	www.hp.com/support	
Mauritius	(262) 262 210 404	
México (Ciudad de México)	55-5258-9922	
México	01-800-472-68368	
	081 005 010	المغرب
Nederland	www.hp.com/support	
New Zealand	www.hp.com/support	
Nigeria	(01) 271 2320	
Norge	www.hp.com/support	
	24791773	نمسا
Panamá	1-800-711-2884	
Paraguay	009 800 54 1 0006	
Perú	0-800-10111	
Philippines	www.hp.com/support	
Polska	0801 800 235	
Portugal	www.hp.com/support	
Puerto Rico	1-877-232-0589	
República Dominicana	1-800-711-2884	
Reunion	0820 890 323	
România	0801 033 390	
Россия (Москва)	+7 495 7773284	
Россия (Санкт-Петербург)	+7 812 3324240	
	800 897 1415	السعودية
Singapore	www.hp.com/support/singapore	
Slovensko	0850 111 256	
South Africa (RSA)	0860 104 771	
Suomi	www.hp.com/support	
Sverige	www.hp.com/support	
Switzerland	www.hp.com/support	
臺灣	www.hp.com/support/taiwan	
ໄທ	www.hp.com/support	
	071 891 391	تونس
Trinidad & Tobago	1-800-711-2884	
Türkiye	+90 (212)291 38 65	
Україна	(044) 230-51-06	
	600 54 47 47	الإمارات العربية المتحدة
United Kingdom	www.hp.com/support	
United States	1-(800)-474-6836 (1-800 hp invent)	
Uruguay	0004-054-177	
Venezuela (Caracas)	58-212-278-8666	
Venezuela	0-800-474-68368	
Việt Nam	www.hp.com/support	