

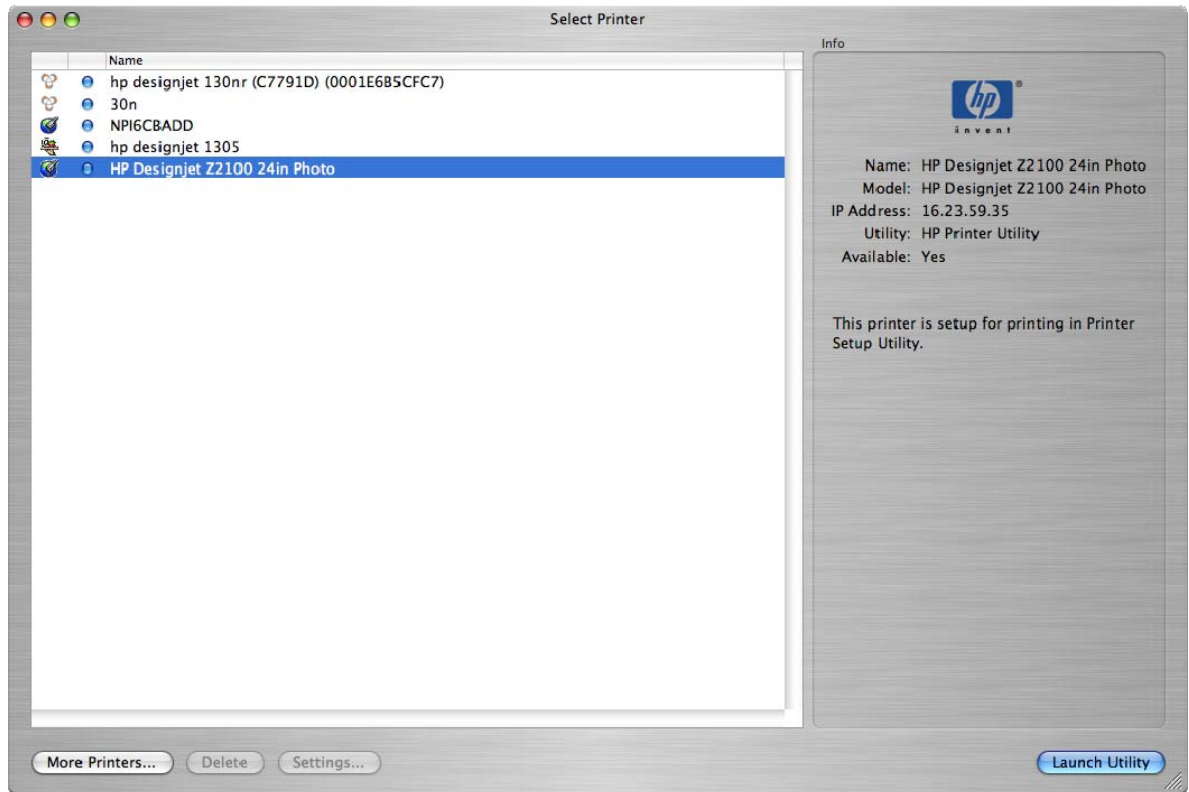


Create and Install ICC profile for an existing paper

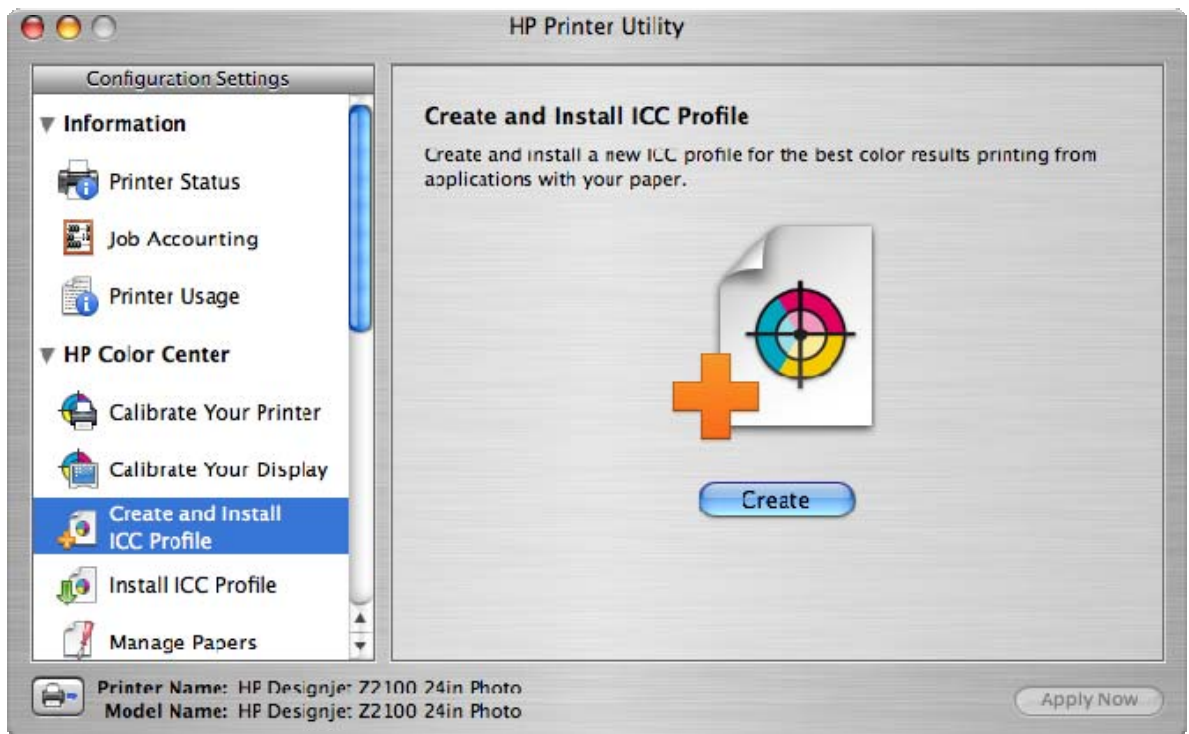
Printer: HP Designjet Z2100 series

Operating System: Mac OS X

1. Select on the **HP Color Center** icon in the dock located along the bottom of the screen.
2. The Printer Selector page will open. Select your printer and Select **Launch Utility**.



3. **Configuration settings** (left hand menu) > Select **Create and Install ICC Profile**.

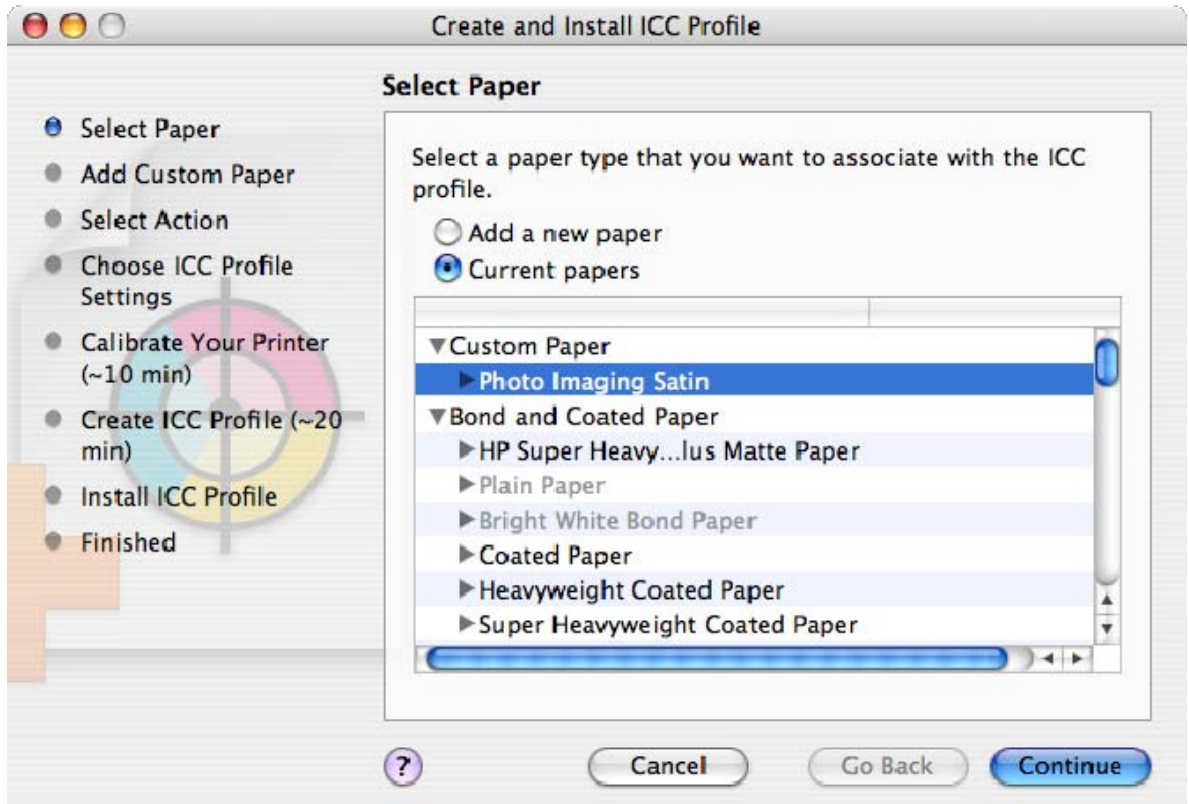


- Select **Create**.

4. The HP Color Center prompts for information about the new paper, this is to create and install your ICC profile:

Select Paper >

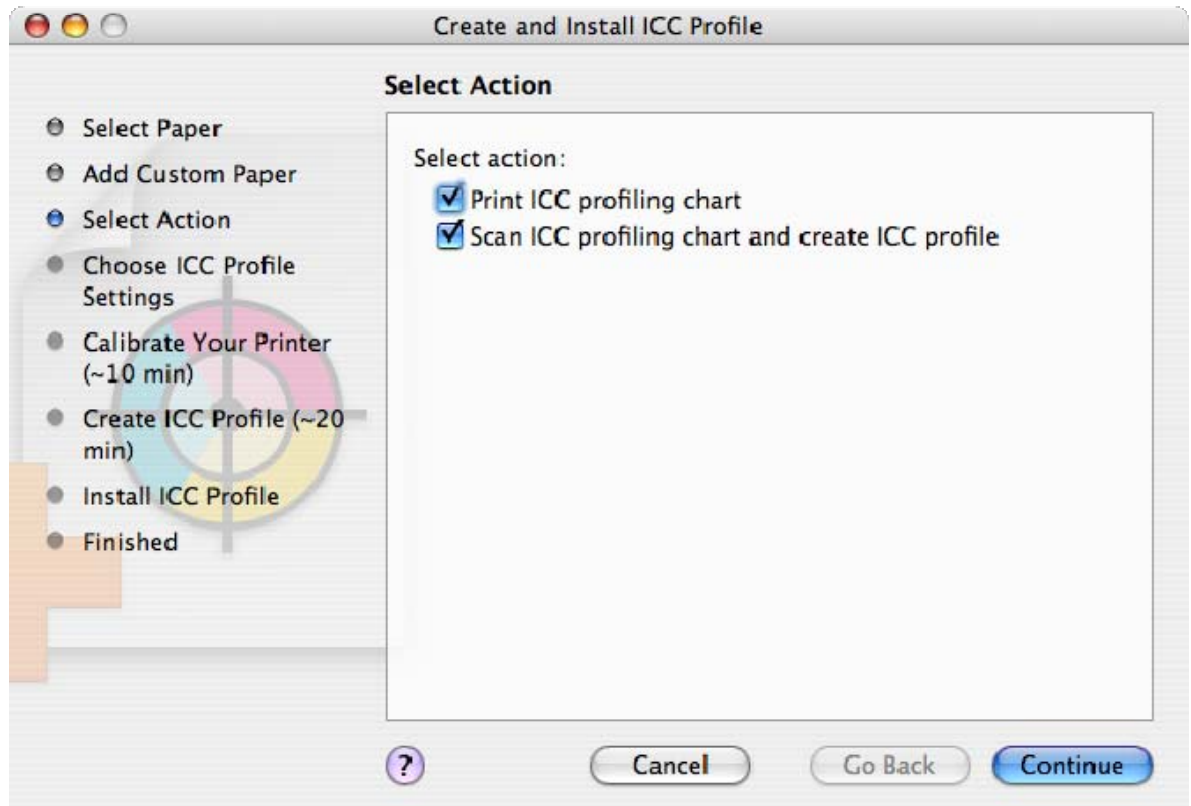
- Select **Current papers**.
- Select the paper type you want to associate with the ICC profile.



- Click **Continue**.

Select Action >

- Select **Print ICC profiling chart**.
- Select **Scan ICC profiling chart and create ICC profile**.



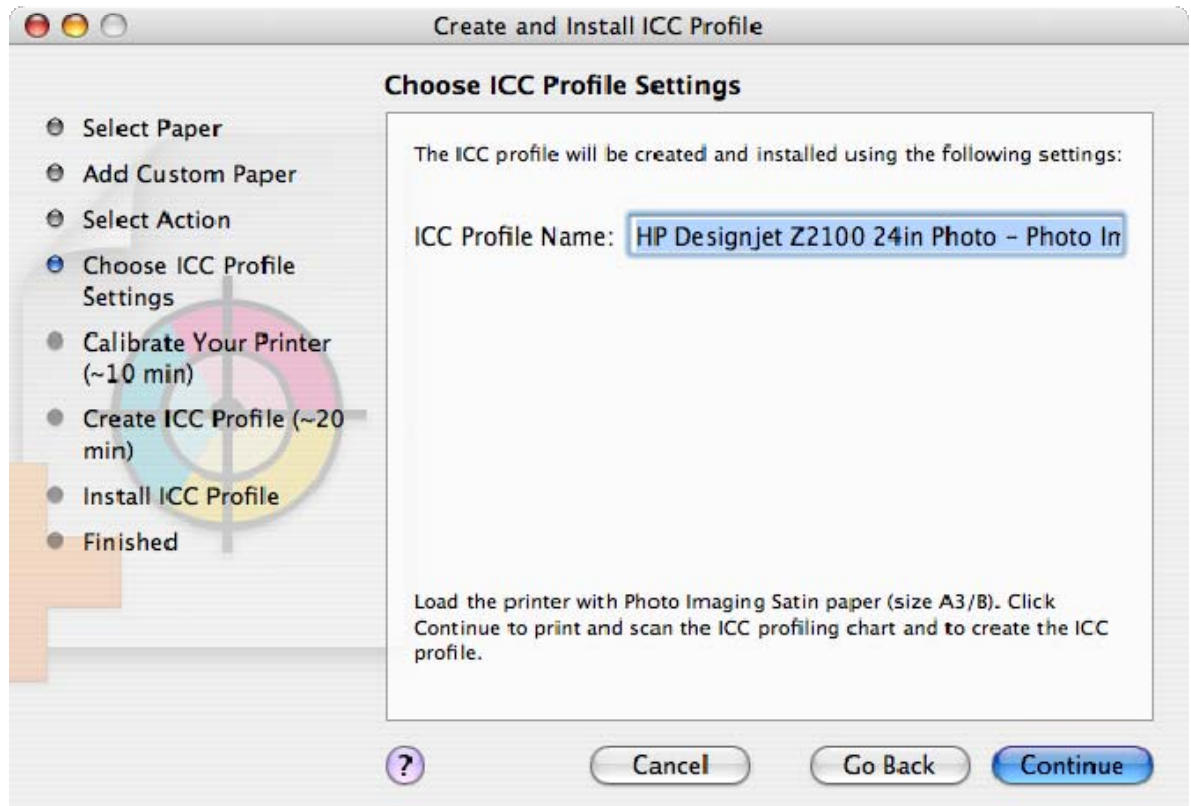
- Click **Continue**.

NOTE If you would like to use a longer drying time, you can ask the HP Color Center to create the test chart without going on to create a profile (Select only **Print ICC profiling chart**). Then, later, when the chart is completely dry, you can restart the HP Color Center and ask it to create a profile using the test chart you have already created (Select only **Scan ICC profiling chart and create ICC profile**).

In this case the spectrophotometer takes a while to warm up before it is ready to scan.

Choose ICC Profile Settings >

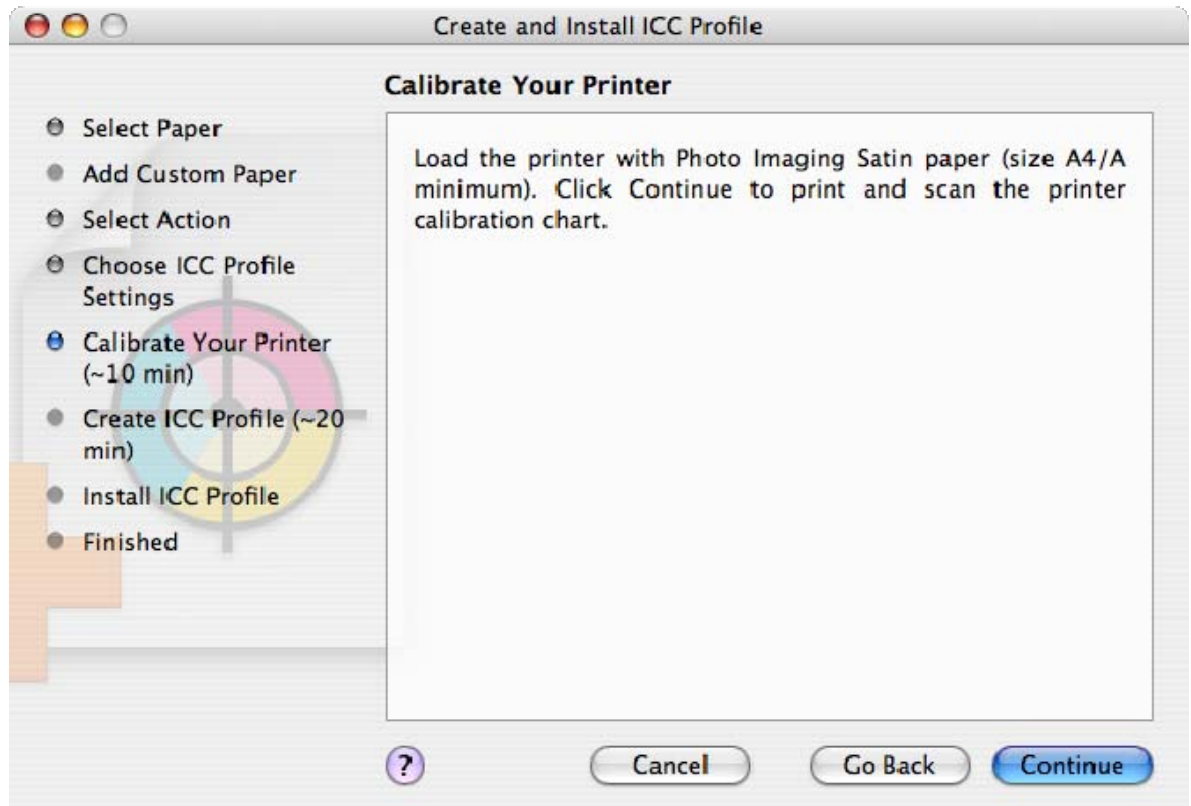
The ICC profile will be created and installed with the specified name and settings.



- Select **Continue**.

Calibrate Your Printer >

- Load your new paper into the printer (A4/A size minimum).



- Select **Continue**.

Create and Install ICC Profile >

The printer creates and installs automatically the new ICC profile which is to be used with your paper. The process takes about 15–20 minutes and consists of the following steps:

- A profiling test chart is printed:

An A3 or B format for cut sheets:



A roll-paper format for roll:



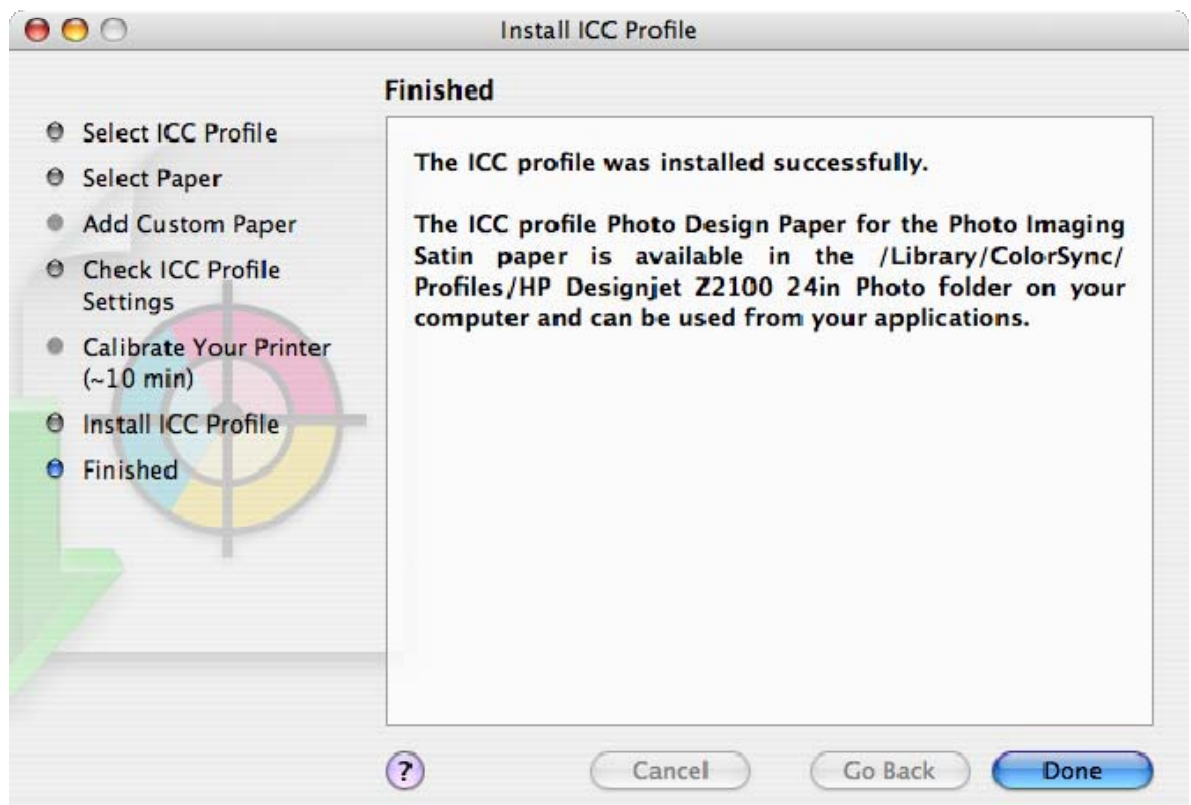
- The test chart is allowed to dry for a period of time, the amount of time depends on the paper type.
- The test chart is scanned and measured using the HP Embedded Spectrophotometer.

Finished >

The new ICC profile is stored in a system folder on your computer.

The profile is also stored in the printer, so that other computers connected to the same printer can copy it.

NOTE Some applications may need to be closed and restarted in order to use a profile that has just been created.



- Click **Done**.

NOTE: If you are printing on HP Collector Satin Canvas and you experience that this media cannot be calibrated or profiled with the embedded spectrophotometer of the printer; you should try one of the following:

- Create an ICC profile with an external device.
- Print using Printer Color Management option. It does not require an ICC profile.

For more information on HP Designjet products

www.hp.com/go/designjet

© 2006 Hewlett-Packard Development Company, L.P. The information contained herein is subject to change without notice. The only warranties for HP products and services are set forth in the express warranty statements accompanying such products and services. Nothing herein should be construed as constituting an additional warranty. HP shall not be liable for technical or editorial errors or omissions contained herein.

Adobe Photoshop and PostScript are trademarks of Adobe Systems Incorporated. PANTONE is Pantone, Inc.'s check-standard trademark for color.

Rev. 1.0, 10/2006

