

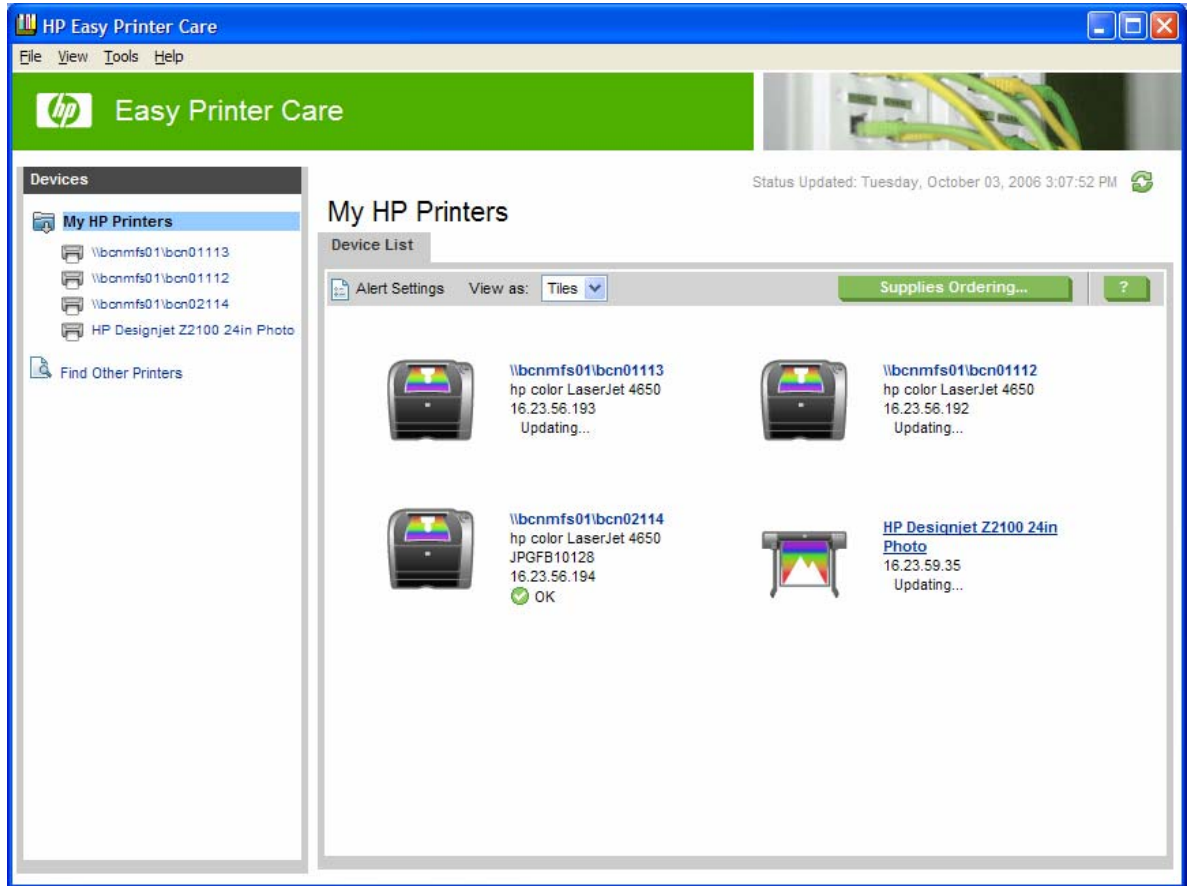


Install an ICC profile

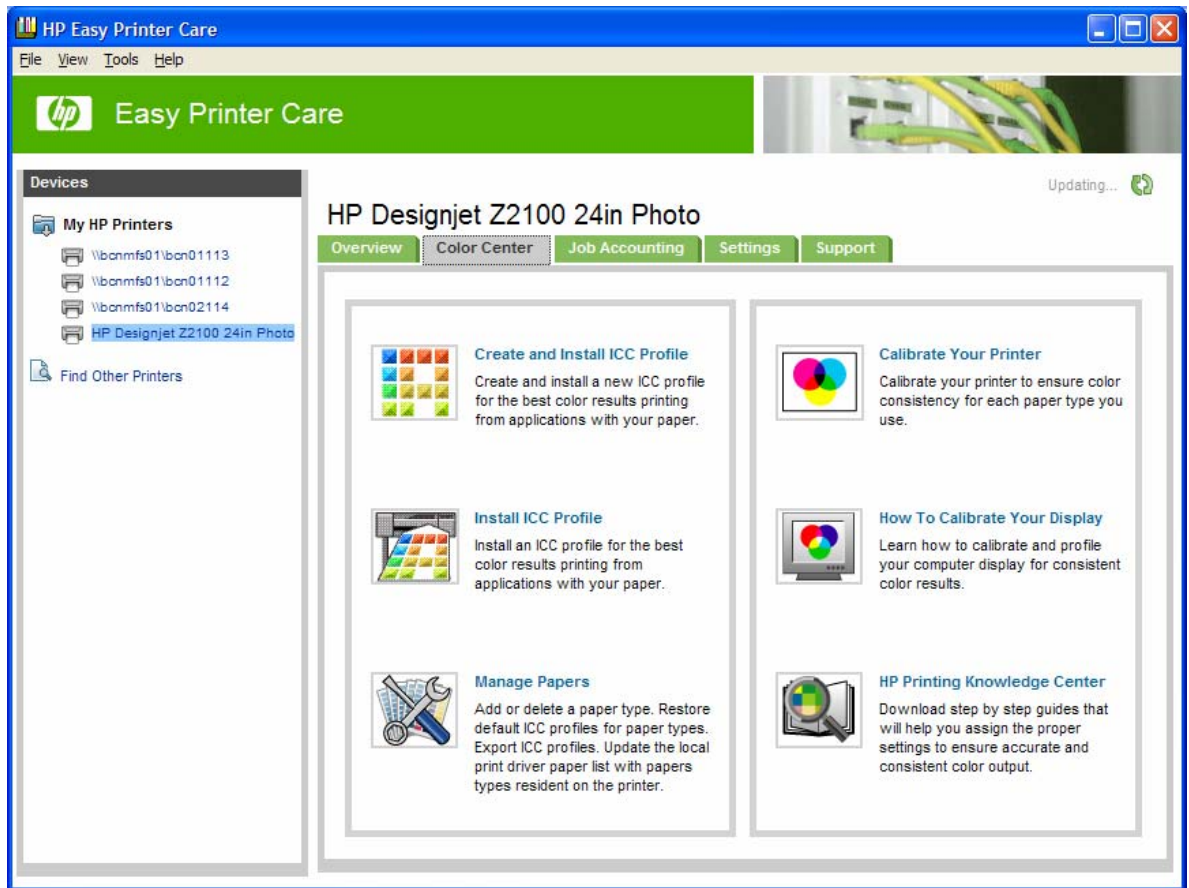
Printer: HP Designjet Z2100 series

Operating System: Windows

- Select the **HP Color Center** desktop icon.
- The HP Easy Printer Care will open. Select your printer.



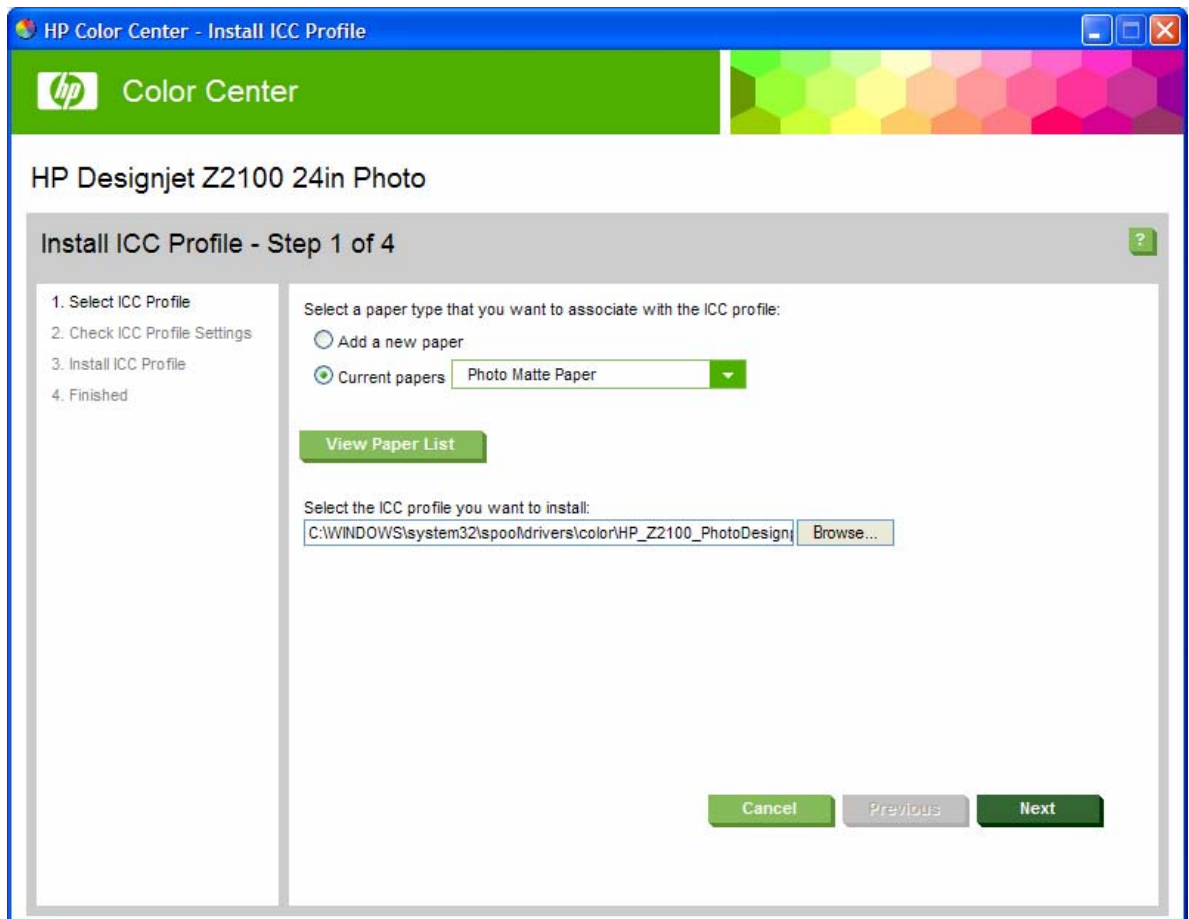
- **Color Center** tab > Select **Install ICC Profile**.



The HP Color Center prompts for information about the new paper, so that it can install your ICC profile:

Select ICC Profile >

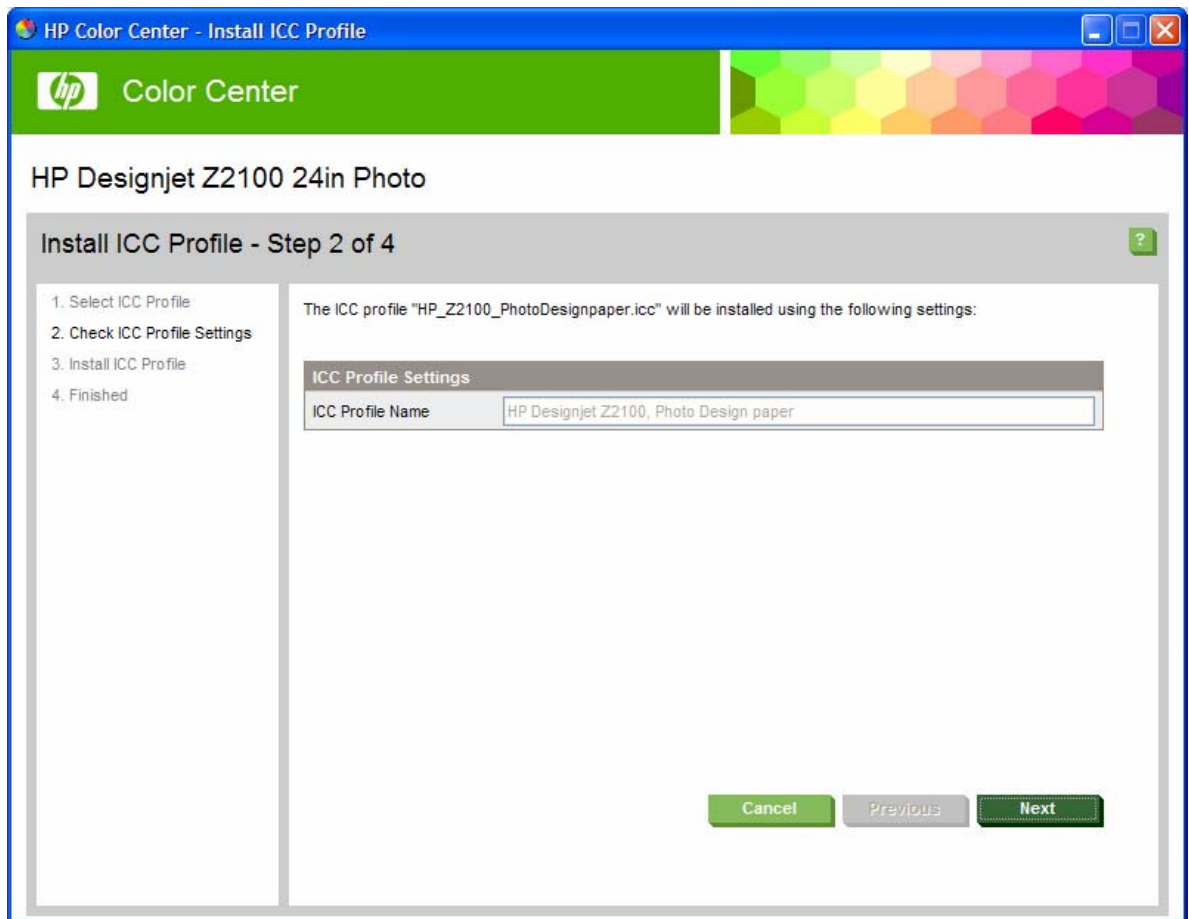
- **Select a paper type...** > Select **Current papers**.
- Select **Browse** and select the ICC Profile you want to install.



- Select **Next**.

Check ICC Profile Settings >

The ICC profile will be installed with the specified name and settings.



- Select **Next**.

Install ICC Profile >

The printer automatically installs the new ICC profile that is to be used with your paper.

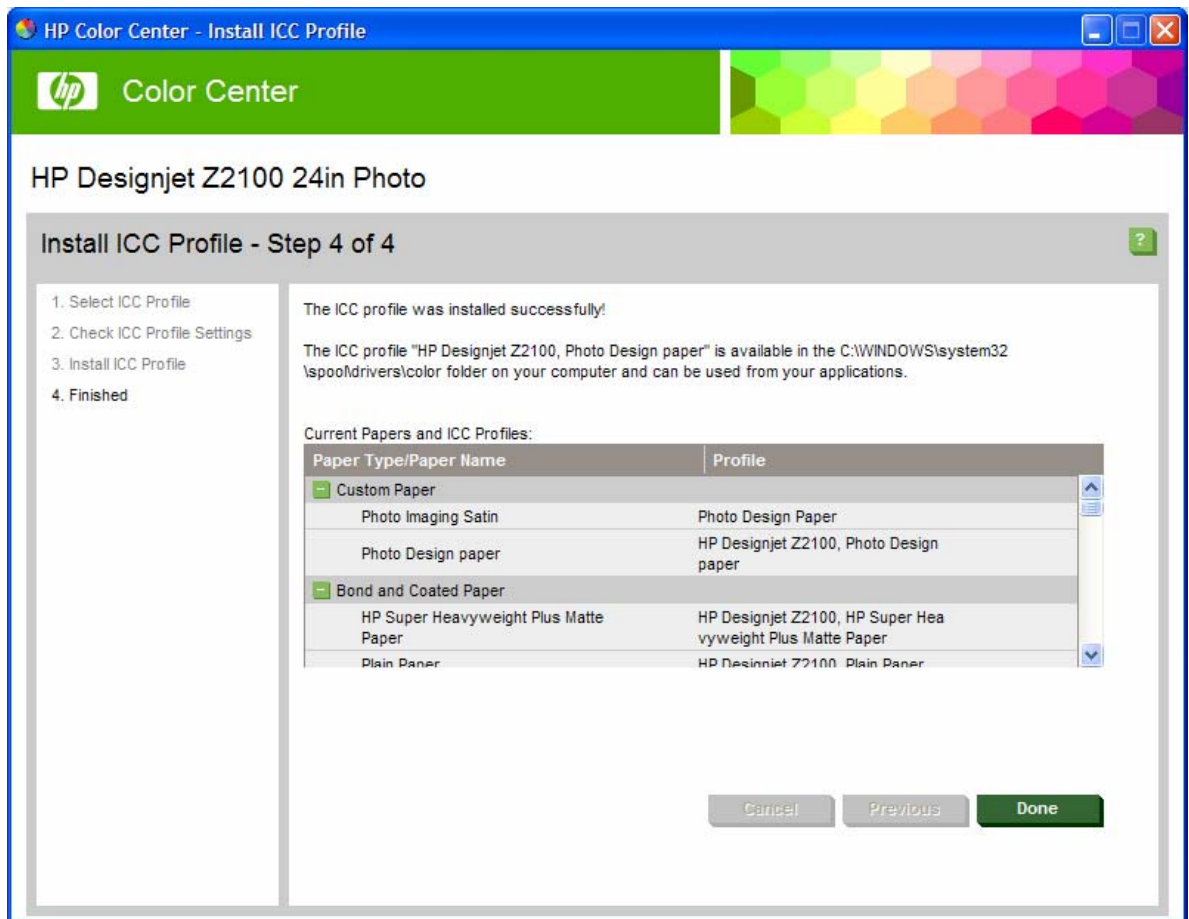
Finished >

The new ICC profile is stored in a system folder on your computer.

C:\WINDOWS\system32\spool\drivers\color\HP_Z2100_PhotoDesignpaper.icc

The profile is also stored in the printer, so that other computers connected to the same printer can copy it.

Some applications may need to be closed and restarted in order to use a profile that has just been created.



- Select **Done**.

NOTE: If you are printing on HP Collector Satin Canvas and you find that this media cannot be calibrated or profiled with the embedded spectrophotometer of the printer; you should try one of the following:

- Create an ICC profile with an external device.
- Print using Printer Color Management option. It does not require an ICC profile.

For more information on HP Designjet products

www.hp.com/go/designjet

© 2006 Hewlett-Packard Development Company, L.P. The information contained herein is subject to change without notice. The only warranties for HP products and services are set forth in the express warranty statements accompanying such products and services. Nothing herein should be construed as constituting an additional warranty. HP shall not be liable for technical or editorial errors or omissions contained herein.

Adobe Photoshop and PostScript are trademarks of Adobe Systems Incorporated. PANTONE is Pantone, Inc.'s check-standard trademark for color.

Rev. 1.0, 10/2006

