

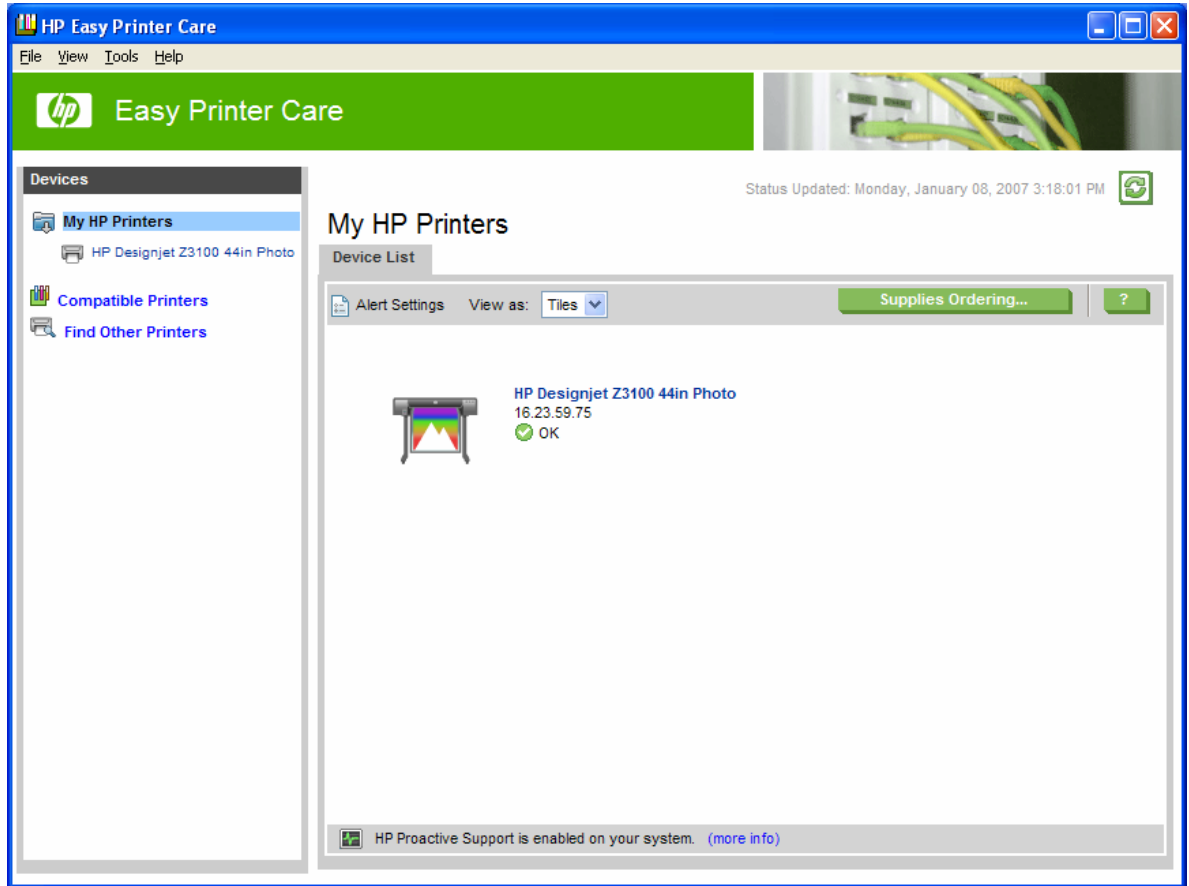


## Create and Install ICC profile for an existing paper

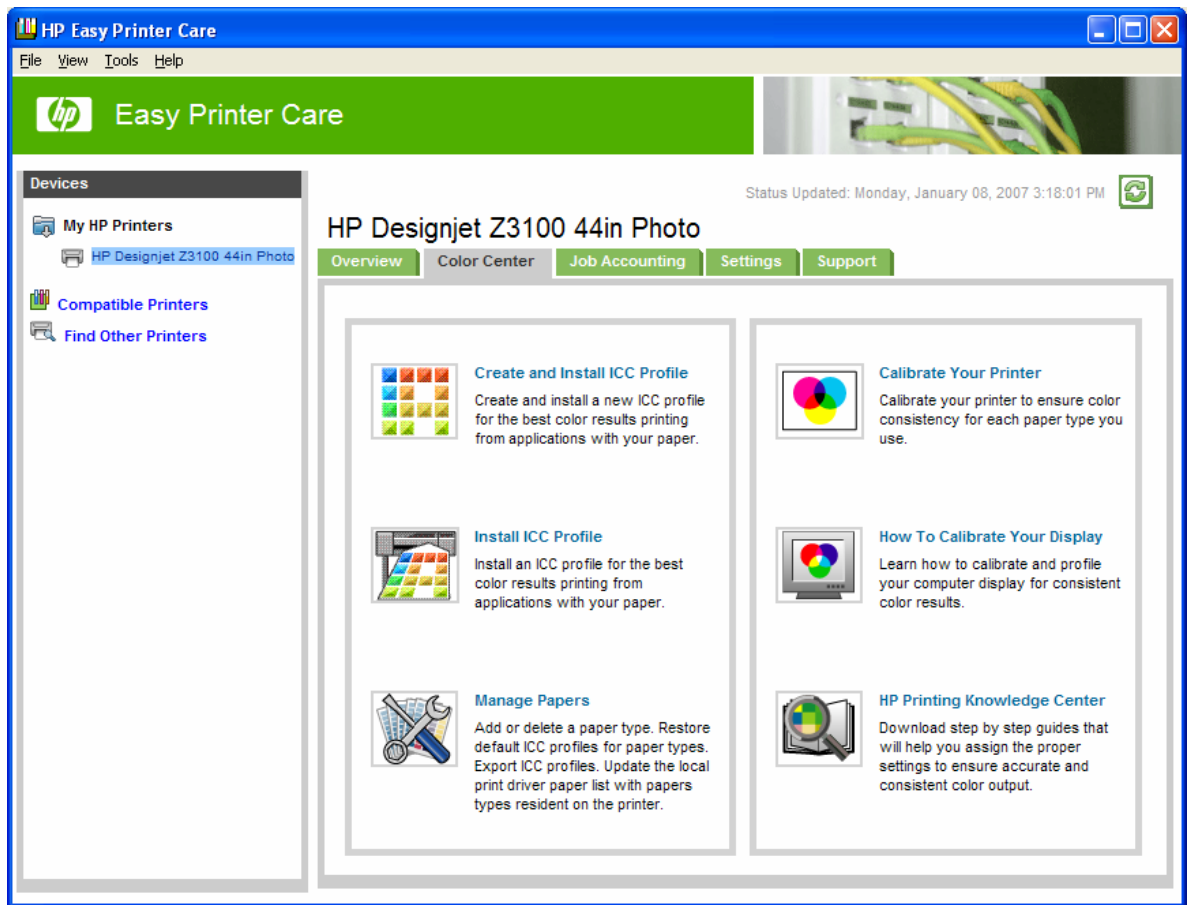
Printer: HP Designjet Z3100 series

Operating System: Windows

- Select the **HP Color Center** desktop icon.
- The HP Easy Printer Care application will open. Select your printer.



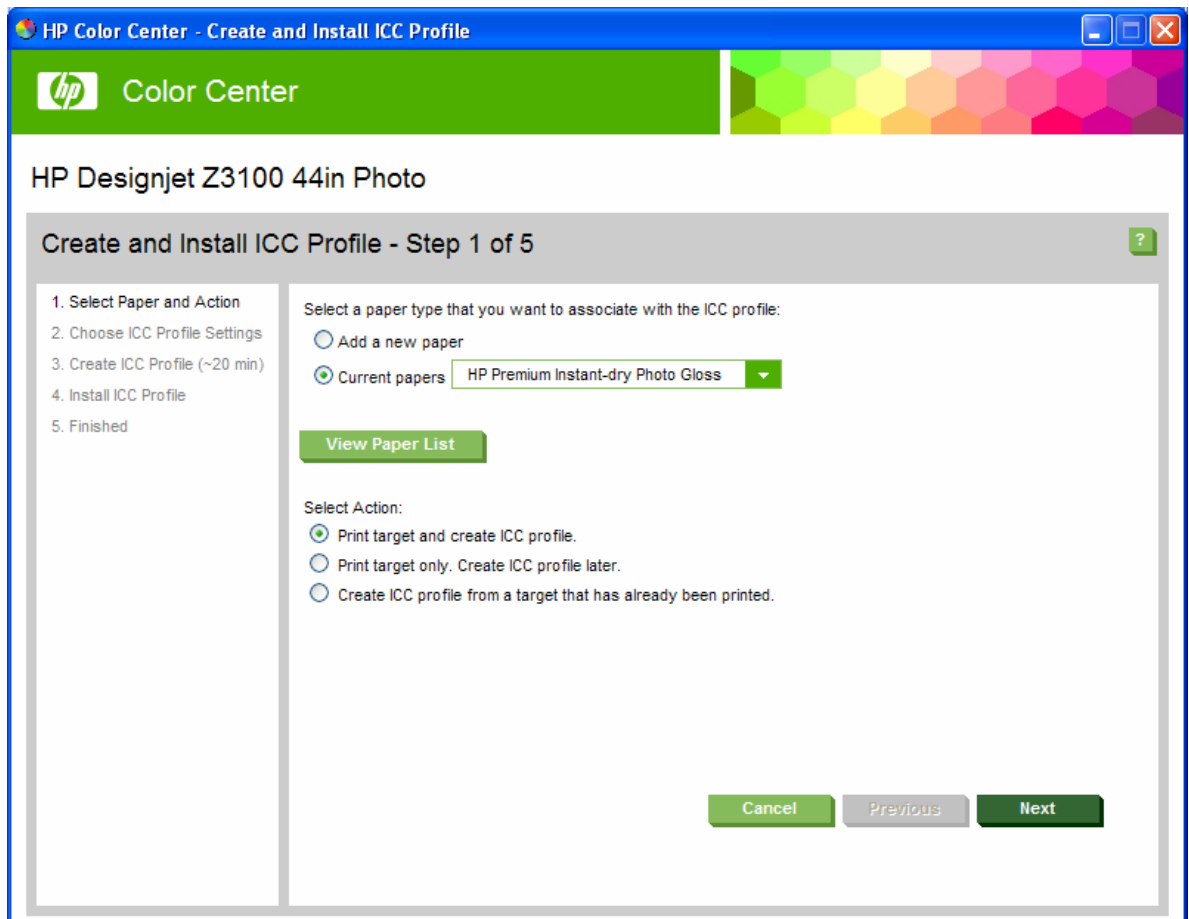
- **Color Center** tab > Select **Create and Install ICC Profile**.



The HP Color Center prompts for information about the new paper, this is to create and install the new ICC profile:

### Select Paper and Action >

- **Select a paper type...** > Select **Current papers**.
- Select the paper type you want to associate with the ICC profile.
- **Select Action** > Select **Print target and create ICC profile**.



- Select **Next**.

**NOTE** If you would like to use a longer drying time, you can ask the HP Color Center to create the test chart without going on to create a profile (**Print target only. Create ICC profile later**). Then, later, when the chart is completely dry, you can restart the HP Color Center and then create a profile using the test chart you have already created (**Create ICC profile from a target that has already been printed**).

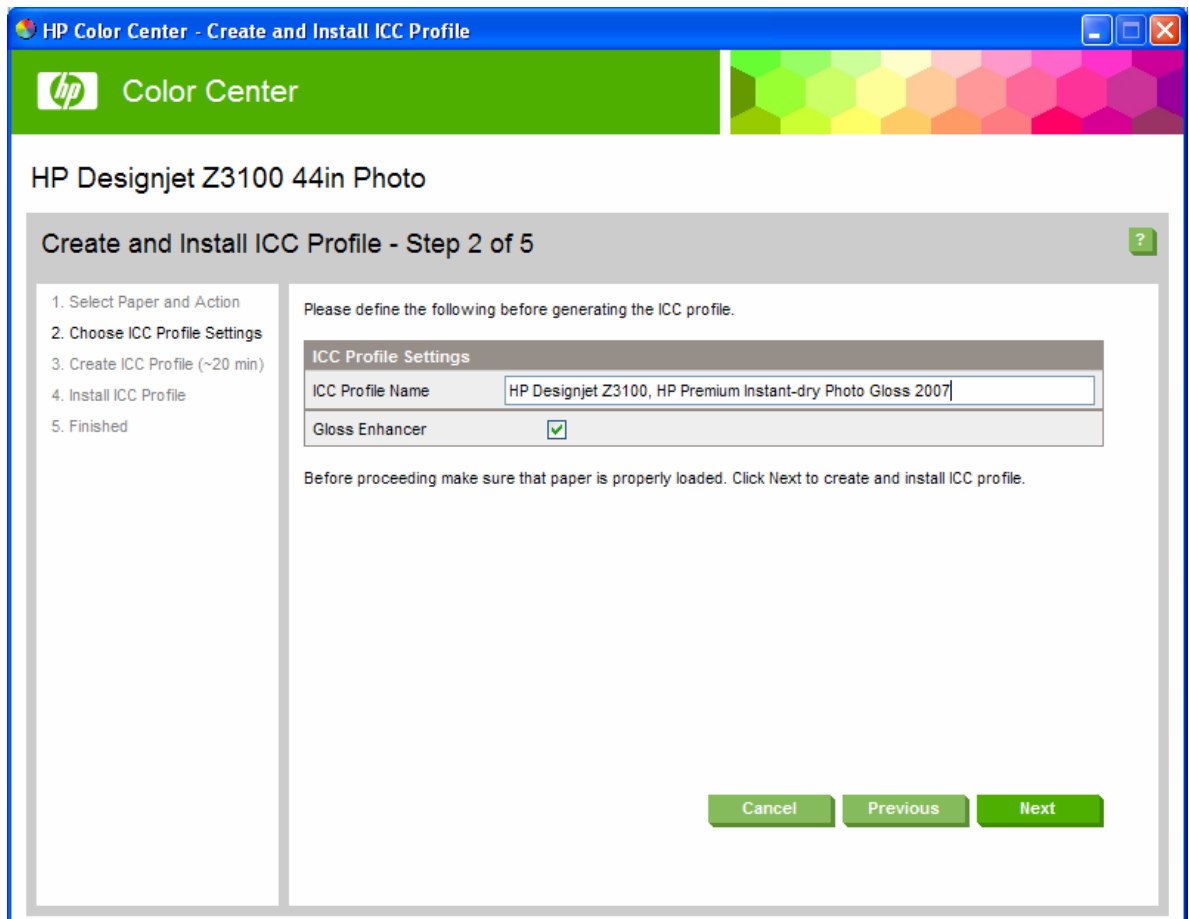
In this case the spectrophotometer takes a while to warm up before it is ready to scan.

### Choose ICC Profile Settings >

The ICC profile will be created and installed with the specified name and settings.

- Check **Gloss Enhancer** if you are printing on photo gloss paper.

You can profile a photo paper with the gloss enhancer on or off. The two profiles will be different, so you are recommended to save them under different names.



- Load your new paper into the printer (A3/B size minimum).
- Select **Next**.

### Create and Install ICC Profile >

The printer creates and installs the new ICC profile, automatically; this is to be used with your new custom paper. The process takes about 15–20 minutes and consists of the following steps:

1. A profiling test chart is printed:  
An A3 or B format for cut sheets:



A roll-paper format for roll:



2. The test chart is allowed to dry for a period of time, the amount of time depends on the paper type.
3. The test chart is scanned and measured using the HP Embedded Spectrophotometer.

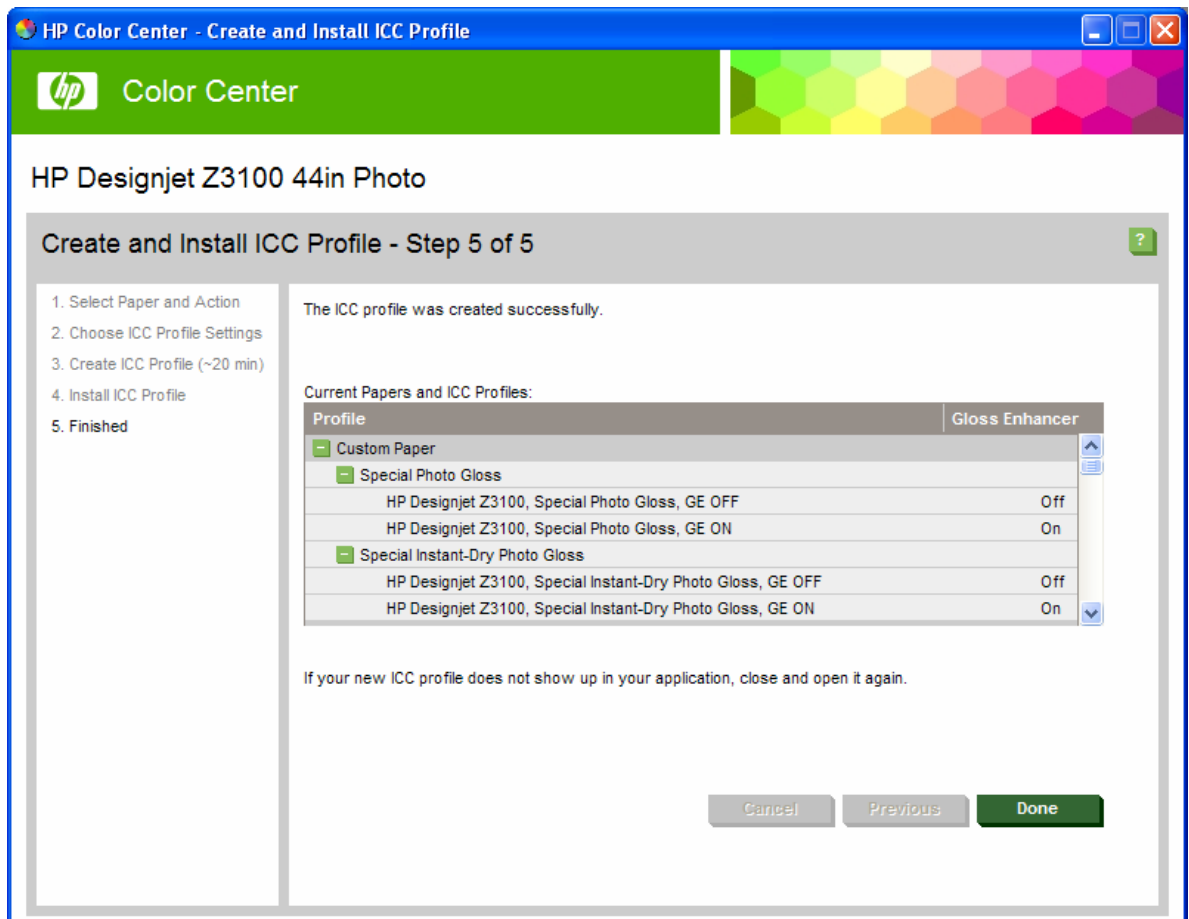
### Finished >

The new ICC profile is stored in a system folder on your computer:

C:\WINDOWS\system32\spool\drivers\color\

The profile is also stored in the printer, so that other computers connected to the same printer can copy it.

Some applications may need to be closed and restarted in order to use a profile that has just been created.



- Select **Done** and **OK**.

**NOTE:** If you are printing on HP Collector Satin Canvas and you experience that this media cannot be calibrated or profiled with the embedded spectrophotometer of the printer; you should try one of the following:

- Create an ICC profile with an external device.
- Print using Printer Color Management option. This does not require having an ICC profile.

For more information on HP Designjet products

[www.hp.com/go/designjet](http://www.hp.com/go/designjet)

© 2007 Hewlett-Packard Development Company, L.P. The information contained herein is subject to change without notice. The only warranties for HP products and services are set forth in the express warranty statements accompanying such products and services. Nothing herein should be construed as constituting an additional warranty. HP shall not be liable for technical or editorial errors or omissions contained herein.

Adobe Photoshop and PostScript are trademarks of Adobe Systems Incorporated. PANTONE is Pantone, Inc.'s check-standard trademark for color.

Rev. 1.0, 01/2007

