



Printing your design

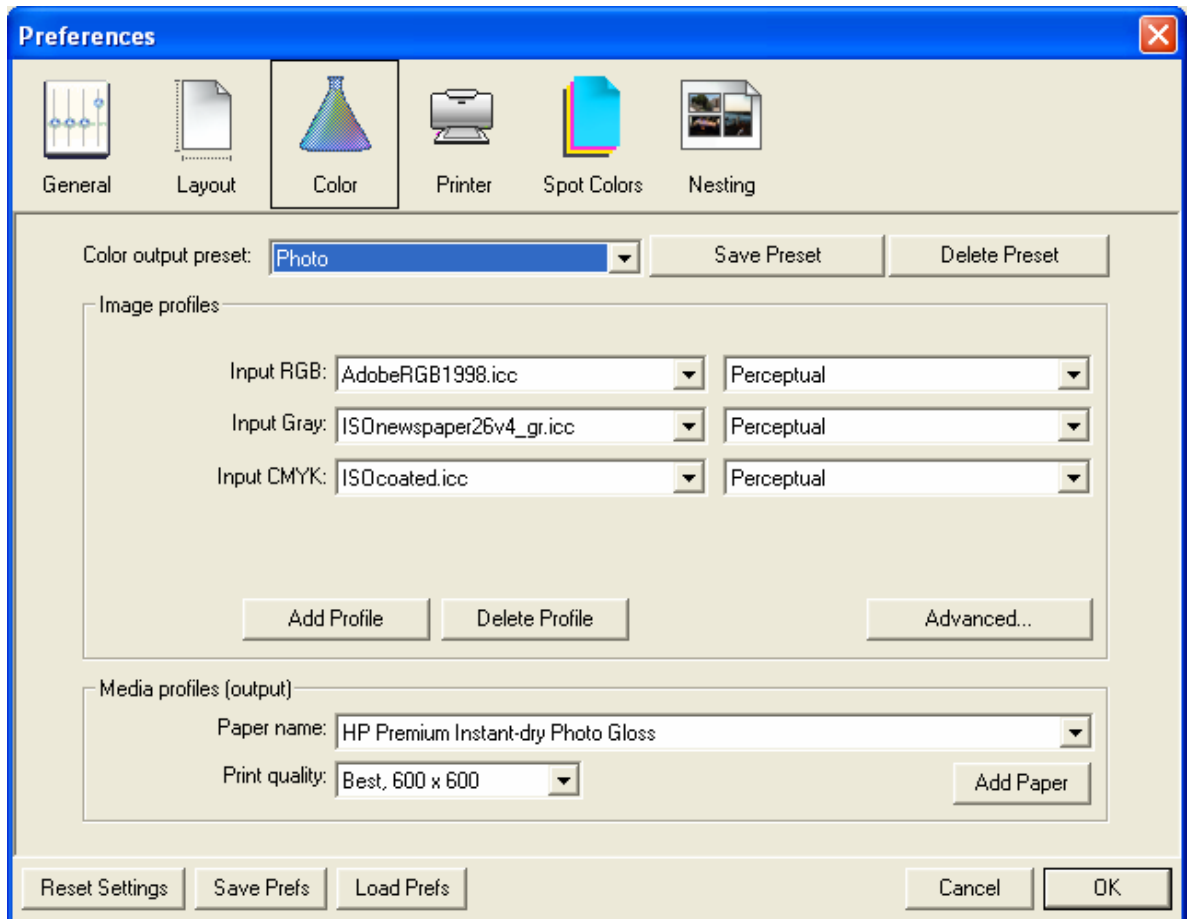
Application: Adobe Illustrator CS2

Printer: HP Designjet Z3100 series

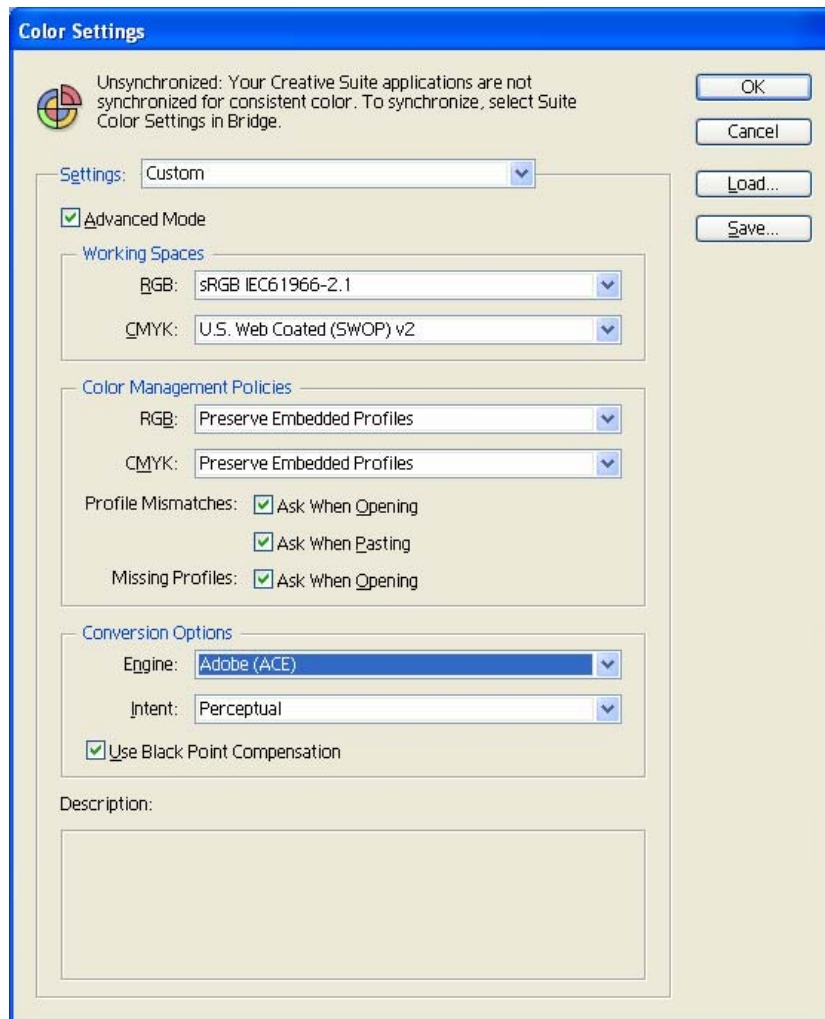
Software: EFI Designer Edition for HP

Operating System: Windows

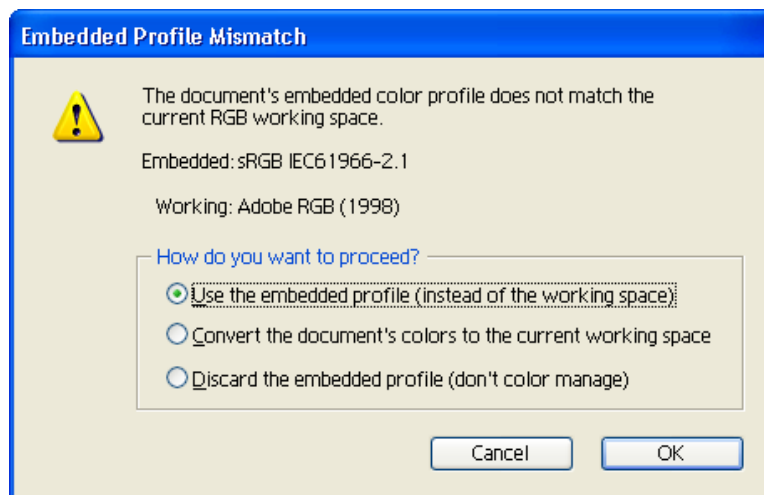
1. First recommendations:
 - See the [Media type functionality & features](#) and choose the most appropriate media.
 - It is essential you have the media type correctly calibrated with the printer, consult the [Calibrate my printer](#) document.
 - In order to get a correct display, it's also essential you have the monitor calibrated, consult the [Profile my monitor](#) document.
2. Open the EFI Designer Edition RIP.
3. EFI Designer Edition RIP settings, select **Preferences**:
 - Select **Color** tab:
 - **Color output preset**: Select **Photo**.
 - **Image profiles**:
 - Select **EFI profiles**.
 - **Input RGB**: Select your image profile, the profile of the scanner or camera you have used to get the photos (source profile). If you don't have it, select Adobe RGB (1998). Select Perceptual intent.
 - **Input CMYK**: Select your image profile, if you don't have it, Euroscale Coated v2 (for Europe), U.S. Web Coated (SWOP) v2 (for US) and Japan Standard v2 (for Japan). Select Perceptual intent.
 - If it is not there, click the **Add profile** button and browse to it.
 - **Media profiles (output)**:
 - **Paper name**: Select the paper type that is loaded on the printer (always calibrated).
 - **Print quality**: 1200 x 1200.

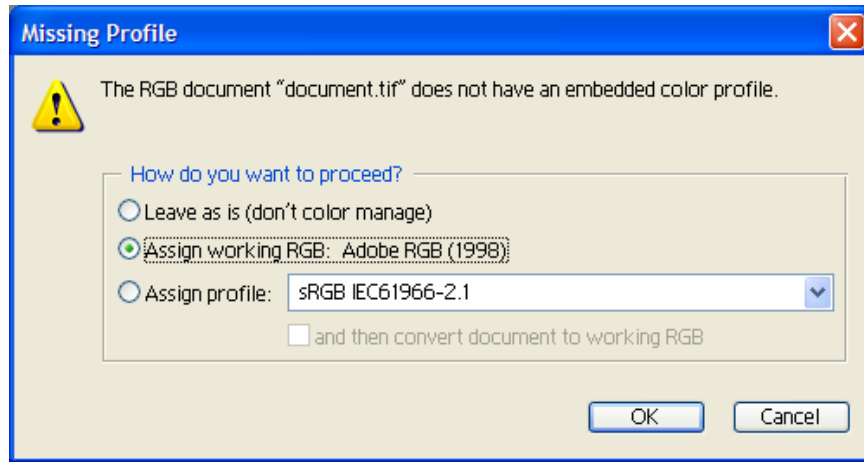


- Select **OK**.
4. Open Adobe Illustrator CS2.
 5. Configure the **Color Settings, Edit menu > Color Settings...**:
 - Make sure the **Advanced Mode** is displayed.
 - **Working Space > RGB**: Select the profile of the scanner or camera you have used to get the photo (source profile), if you don't have it, select Adobe RGB (1998).
 - **Working Space > CMYK**: Euroscale Coated v2 (for Europe), U.S. Web Coated (SWOP) v2 (for US) and Japan Standard v2 (for Japan).
 - **Color Management Policies**: Preserve the Embedded Profiles.
 - **Profile Mismatches**: Select **Ask When Opening** and **Ask When Pasting**.
 - **Missing Profiles**: Select **Ask When Opening**.
 - **Conversion Options > Intent**: Perceptual (for RGB images) or Relative Colorimetric (for CMYK images).

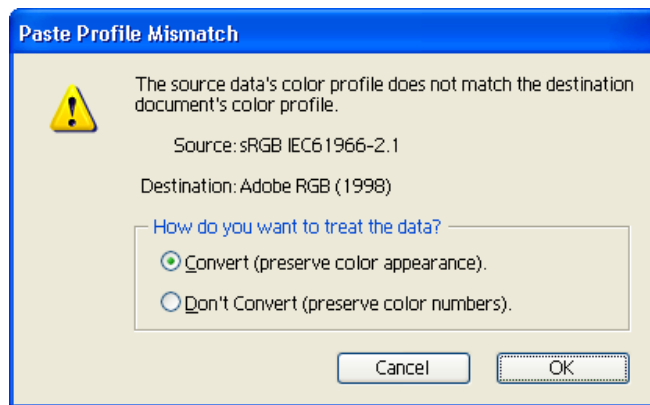


- Select **OK**.
6. Open the image, **File menu > Open...**:
- If the document has an embedded color profile that does not match the current working space, select **Use the embedded profile**. Otherwise, select **Assign working space**.

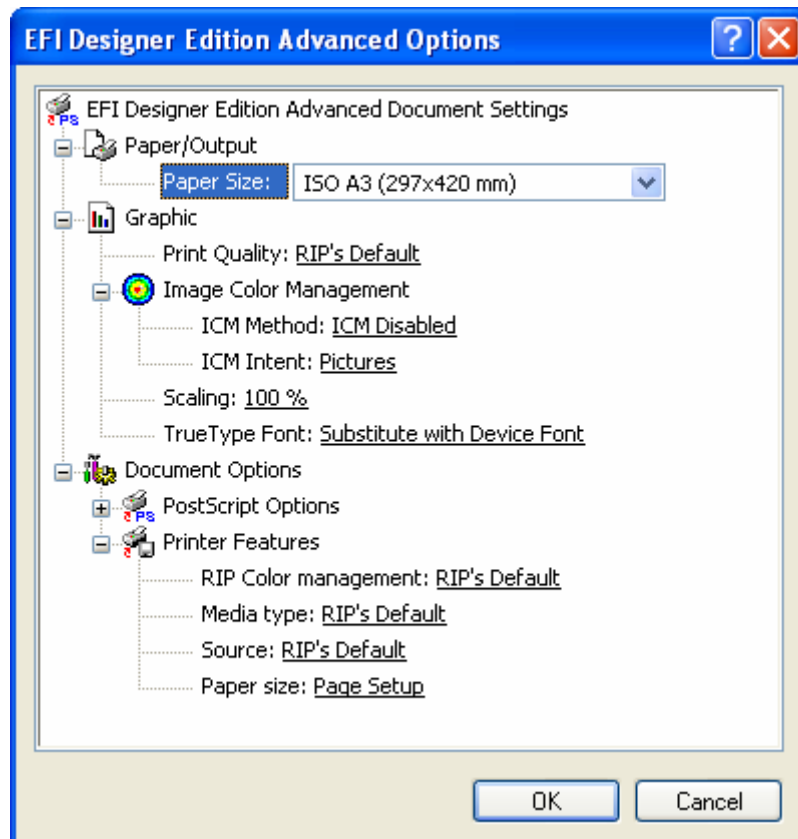




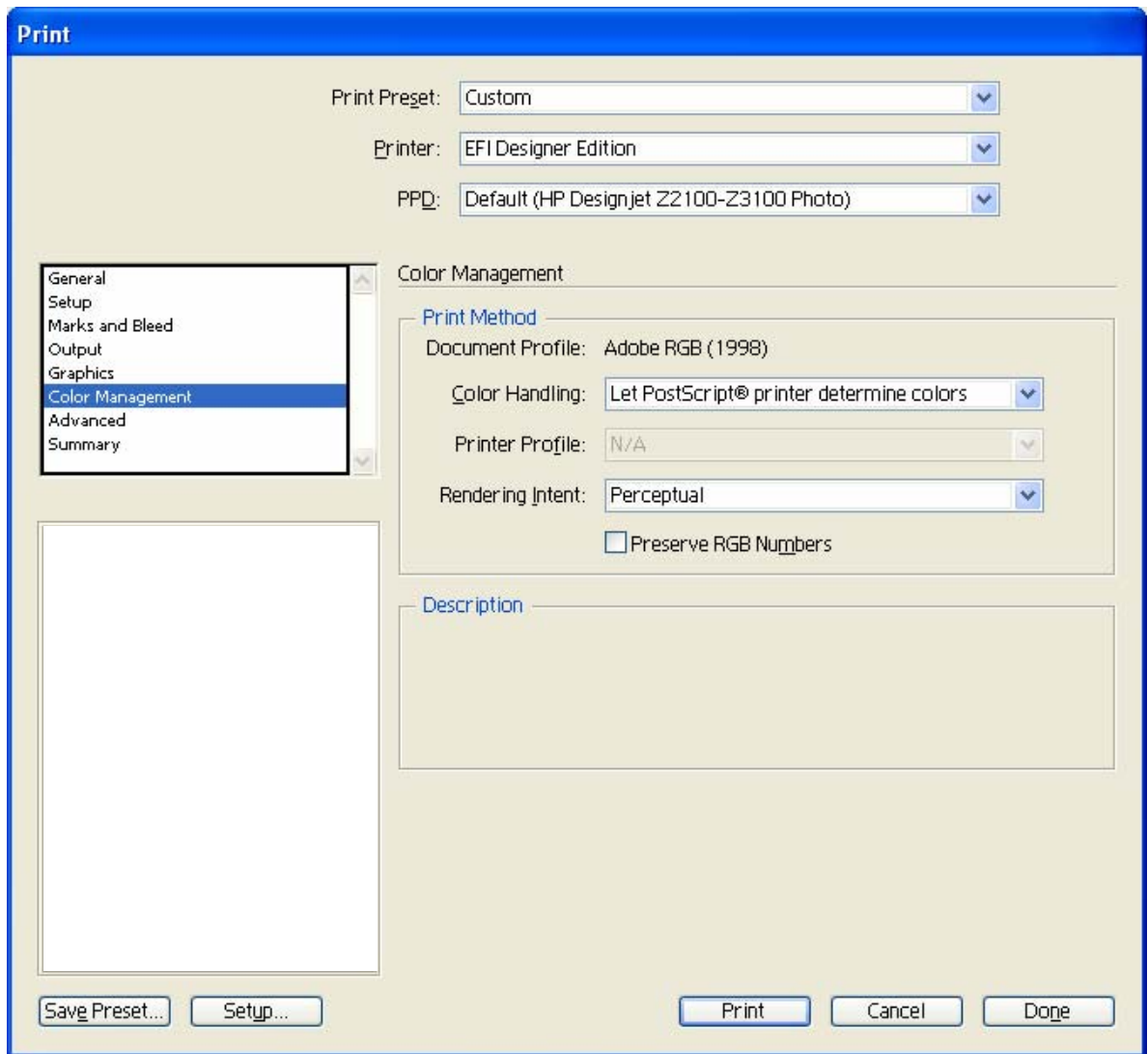
- Select **OK**.
7. If you place an image, you should embed the image in the document. If it has an embedded profile, it will be converted from the embedded color profile to the document color profile preserving the color appearance. If it doesn't have an embedded color profile, Illustrator will assign the document color profile.
- **File menu > Place...:** browse to the image and uncheck the **Link** checkbox. If you are asked **How do you want to treat the data?**, select **Convert**.



- Select **OK**.
8. Make sure you have configured the **Document Setup** appropriately for your document, **File menu > Document Setup...**
9. Printer settings, **File menu > Print... > Setup...** button:
- **Select Printer...:** Select the printer (ex. EFI Designer Edition).
 - **Preferences:**
 - **Layout** tab:
 - **Orientation:** Select the orientation of your document on the paper.
 - **Advanced...** button:
 - **Paper/Output > Paper Size:** Select the paper size of the media loaded on the printer.
 - **Document Options > Printer Features:**
 - **Paper size:** Page Setup.
 - Select **RIP's Default** on the others settings.



- Select **OK** and **Print** until the InDesign Print dialog box.
9. Adobe Illustrator **Print...** settings:
- **General** (left hand menu):
 - **Media > Size:** Defined by Driver.
 - **Options:** Select the scaling option you need.
 - **Color Management** (left hand menu):
 - **Print Method > Color Handling:** Let PostScript® printer determine colors.
 You don't need to worry about the profiles and rendering intent because you will select **Let PostScript® printer determine colors** option in the application, then, the RIP will determine which source profile and rendering intent will be used for the conversion to the print space, these are the Image profiles settings of the RIP Color Preferences. The application color settings will be overridden.
 - Uncheck **Preserve RGB** (or **CMYK Numbers**).



- Select **Print**.

NOTE If the printed image does not look correct, you can try the following: Open and save your image in your application, Illustrator. Then, open the EFI Designer Edition RIP and print your design. Please, consult the following document which explains this process step-by-step:

[Printing your design with your EFI Designer Edition RIP.](#)

For more information on HP Designjet products

www.hp.com/go/designjet

© 2007 Hewlett-Packard Development Company, L.P. The information contained herein is subject to change without notice. The only warranties for HP products and services are set forth in the express warranty statements accompanying such products and services. Nothing herein should be construed as constituting an additional warranty. HP shall not be liable for technical or editorial errors or omissions contained herein.

Adobe Illustrator and PostScript are trademarks of Adobe Systems Incorporated. PANTONE is Pantone, Inc.'s check-standard trademark for color.

Rev. 1.0, 03/2007

