



Printing your design

Application: Adobe Illustrator CS2

Printer: HP Designjet Z3100 series

Software: HP PS Driver

Operating System: Windows

You should consider that each person has their own perception and their own subjective opinion about the result; this is because there are various factors that can influence our opinions, such as the type of image (portrait, landscape...), the source color space, the media used, the environmental conditions, the subjective perception about your own photo, etc.... This means the printing suggestion may not completely match with your own personal opinion.

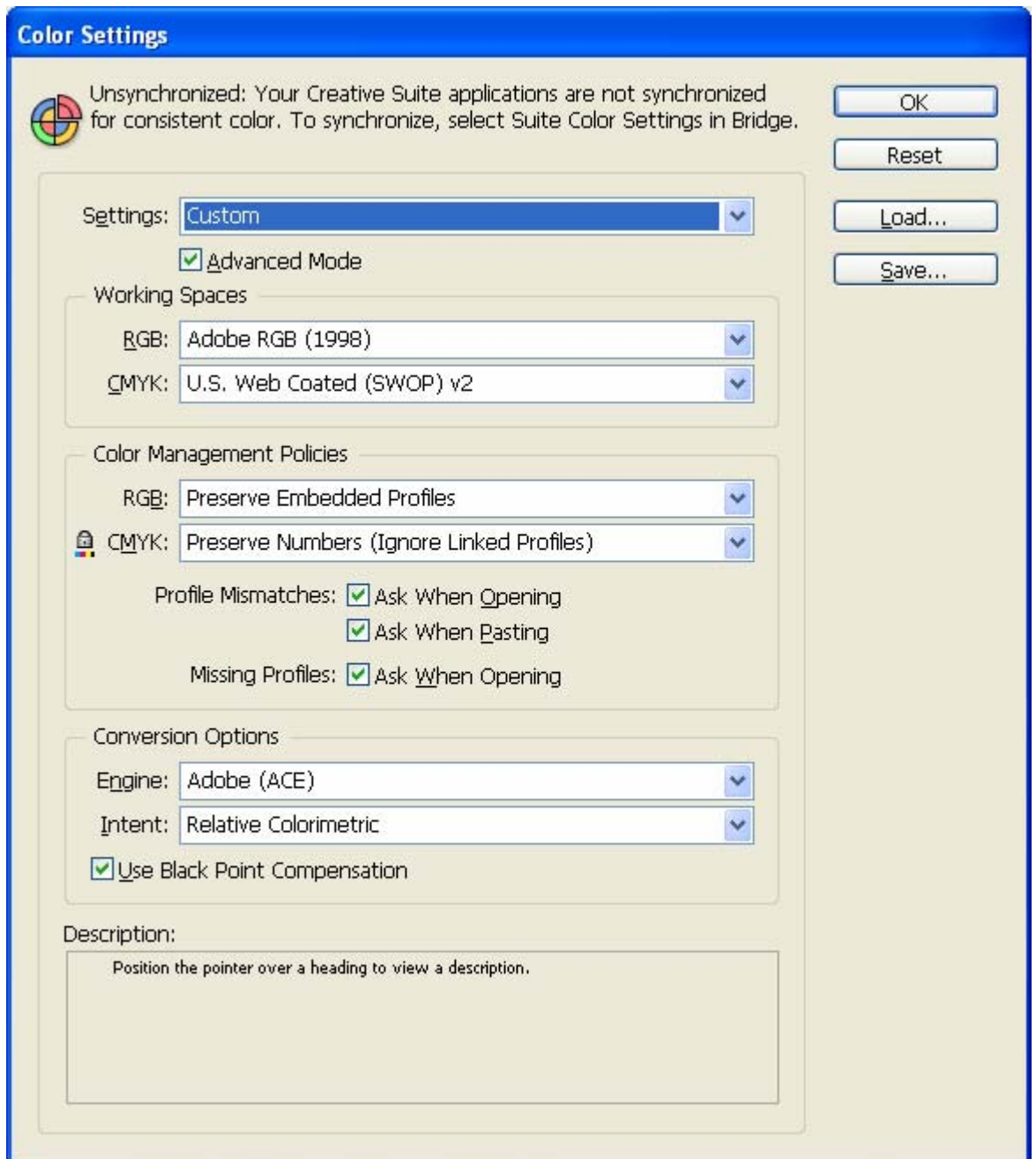
1. First recommendations:

- Refer to the [Media type functionality & features](#) and choose the most appropriate media.
- It is essential that you have the media type correctly calibrated with the printer, refer to the [Calibrate my printer](#) section.
- In order to get a correct display, it's also essential that you have the monitor profiled, refer to the [Profile my monitor](#) document.
- If the paper that you are using is not listed or if you cannot find a paper type that resembles yours closely enough we strongly recommend creating a new Custom Paper Type. You can add a custom paper automatically by using the HP Color Center; refer to the [Add and profile a new paper type](#) document.

2. Open Adobe Illustrator CS2.

3. Configure the **Color Settings, Edit menu > Color Settings...**:

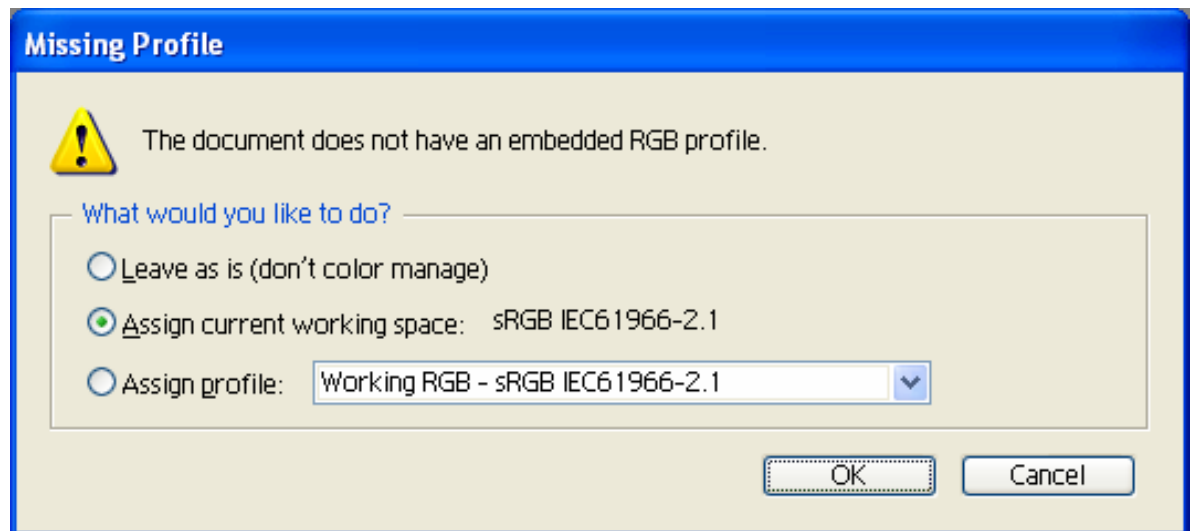
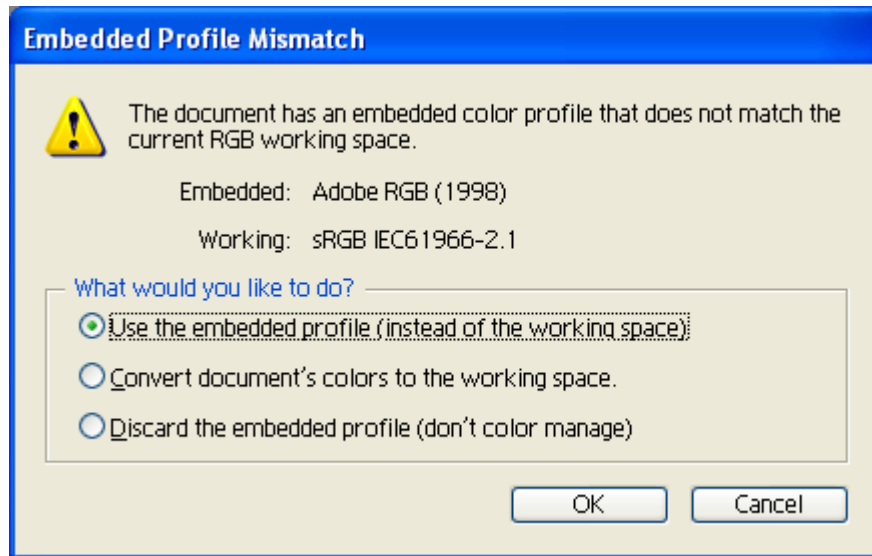
- Make sure the **Advanced Mode** is displayed.
- **Working Space > RGB**: Select the profile of the scanner or camera you have used to get the photo (source profile), if you don't have it, select Adobe RGB (1998).
- **Working Space > CMYK**: Europe ISO Coated FOGRA27 (for Europe), U.S. Web Coated (SWOP) v2 (for US) and Japan Standard v2 (for Japan).
- **Color Management Policies**: Preserve the Embedded Profiles.
- **Profile Mismatches**: Check **Ask When Opening** and **Ask When Pasting**.
- **Missing Profiles**: Check **Ask When Opening**.
- **Conversion Options > Intent**: Relative Colorimetric.



- Select **OK**.

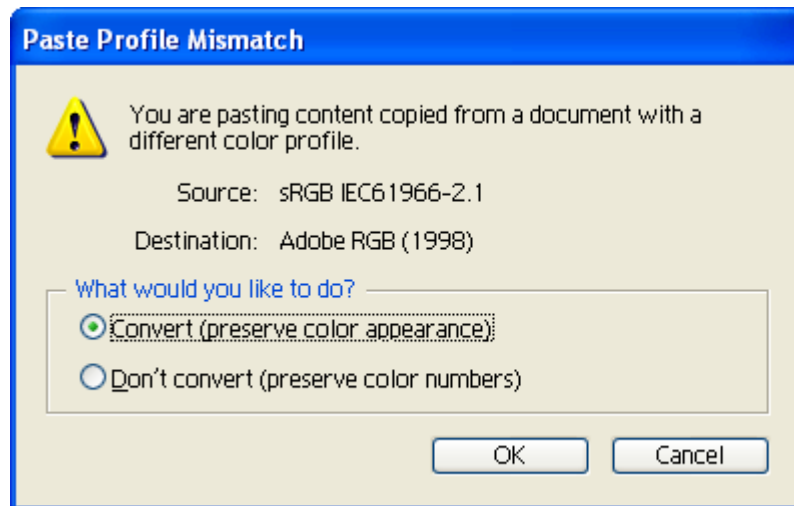
4. Open the image, **File menu > Open...**:

If the document has an embedded color profile that does not match the current working space, select **Use the embedded profile**. Otherwise, select **Assign working space**; if this is selected and the displayed image does not look correct, try assigning it to other color spaces with **Edit > Assign Profile** (try **sRGB**, **Adobe RGB**, **ColorMatch RGB** and others) until you are satisfied.

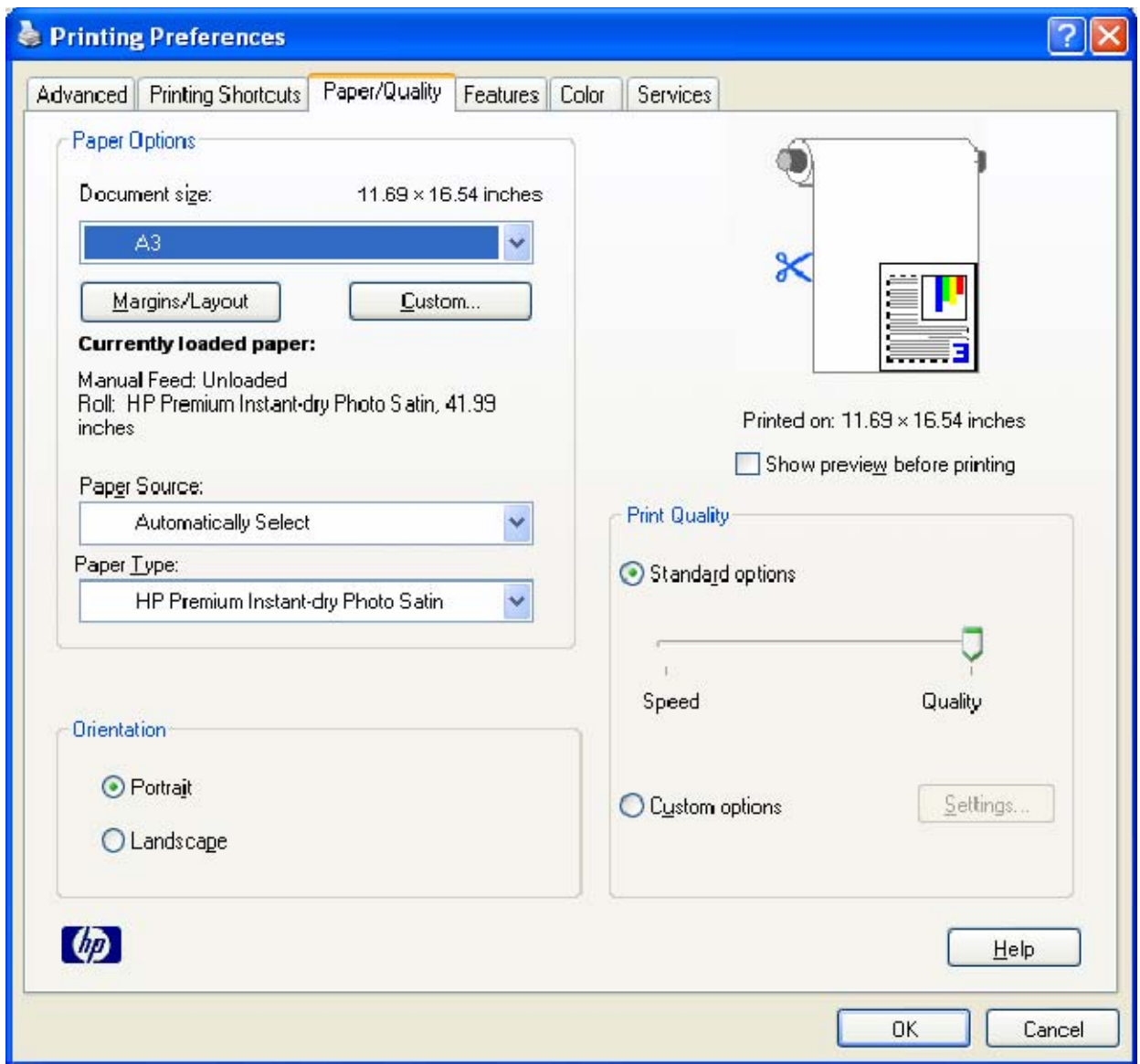


- Select **OK**.

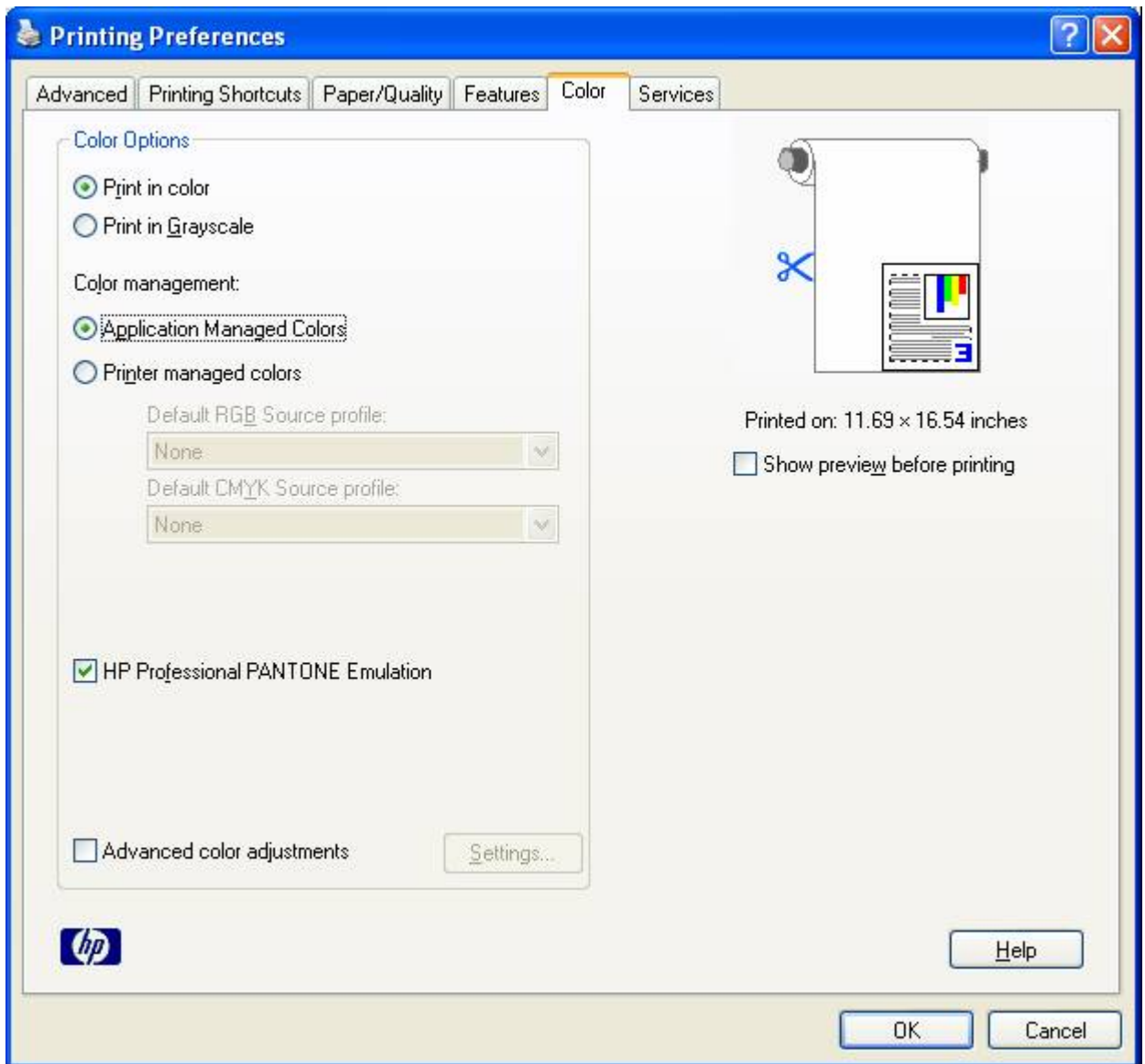
5. If you place an image, you can embed the image in the document. If it has an embedded profile, it will be converted from the embedded color profile to the document color profile preserving the color appearance. If it doesn't have an embedded color profile, Illustrator will assign the document color profile.
 - **File menu > Place...:** browse to the image and uncheck the **Link** checkbox. If you are asked **What would you like to do?** Select **Convert**.



- Select **OK**.
6. Make sure you have configured the **Document Setup** appropriately for your document, **File menu > Document Setup...**
 7. Print your file, **File menu > Print...**
 - Choose driver settings, select the **Setup...** button.
 - Select **Printer** button and select your printer (ex. HP Designjet Z3100ps 44in Photo).
 - Select **Preferences** button:
 - **Paper/Quality** tab:
 - **Paper Type:** Select the media type that is loaded on the printer.
 - **Print Quality:** Select **Standard Options** and drag the slider to **Quality**.



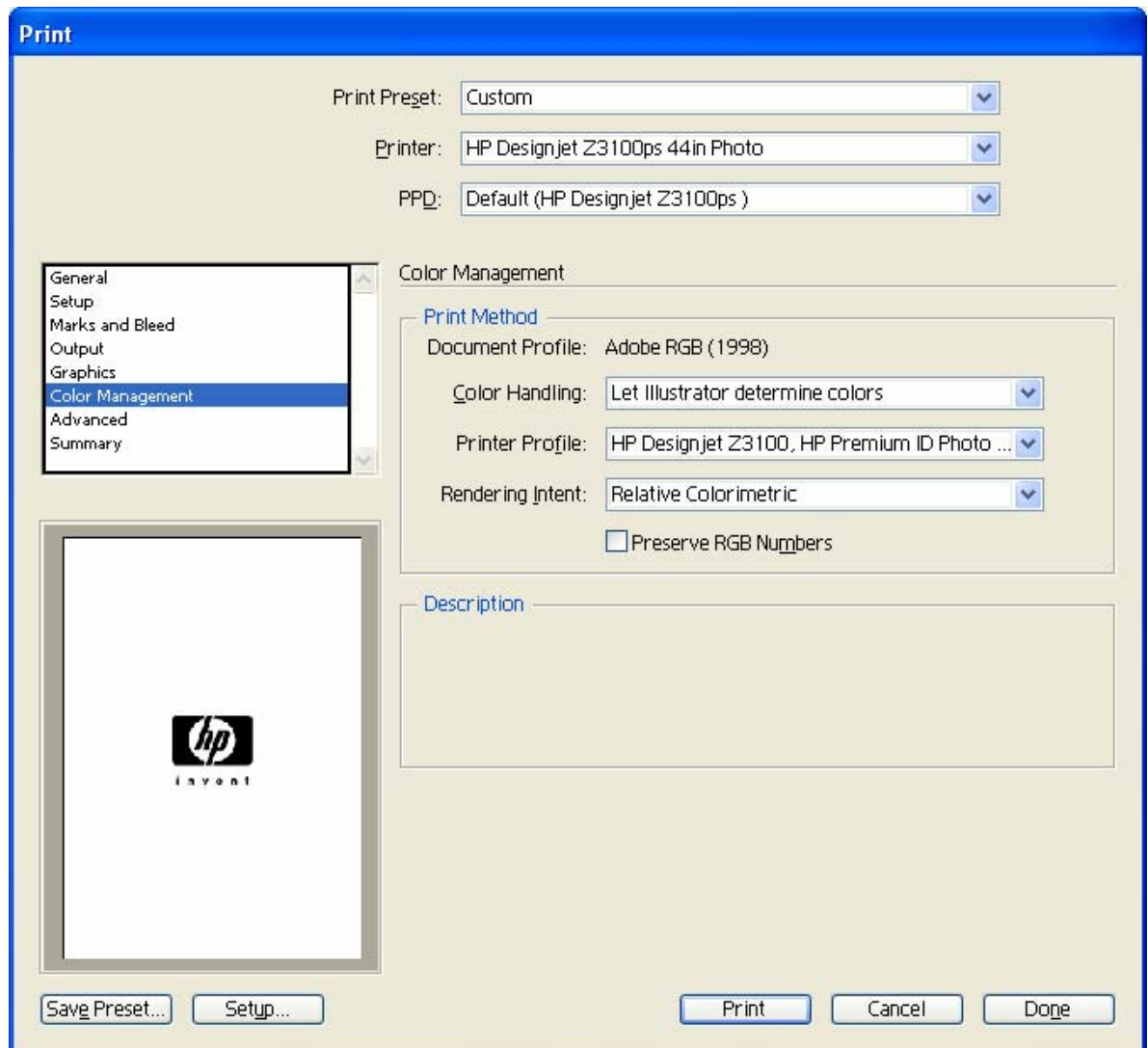
- **Color tab > Color Options:**
 - Select **Print in color**.
 - Select **Color management > Application Managed Colors**.



- Select **OK** and **Print** until the Illustrator print dialog box.

7. Adobe Illustrator **Print...** settings:

- **General** (left hand menu):
 - **Media > Size:** Defined by Driver.
 - **Options:** Select the scaling option you need.
- **Color Management** (left hand menu):
 - **Print Method > Color Handling:** Let Illustrator determine colors.
 - **Print Method > Printer Profile:** Select the profile of the printer and media type you will use to print. If you are printing on photo gloss, semi-gloss or satin paper, select the right color profile with the gloss enhancement feature (GE ON).
 - **Print Method > Rendering Intent:** Relative Colorimetric.
 - Uncheck **Preserve RGB Numbers**.



- Select **Print**.

For more information on HP Designjet products

www.hp.com/go/designjet

© 2007 Hewlett-Packard Development Company, L.P. The information contained herein is subject to change without notice. The only warranties for HP products and services are set forth in the express warranty statements accompanying such products and services. Nothing herein should be construed as constituting an additional warranty. HP shall not be liable for technical or editorial errors or omissions contained herein.

Adobe Illustrator and PostScript are trademarks of Adobe Systems Incorporated. PANTONE is Pantone, Inc.'s check-standard trademark for color.

Rev. 1.0, 05/2007

