



## Proof a press

Application: Adobe InDesign CS2

Printer: HP Designjet Z3100 series

Software: HP PS Driver

Operating System: Mac OS X

You should consider that each person has their own perception and their own subjective opinion about the result; this is because there are various factors that can influence our opinions, such as the type of image (portrait, landscape...), the source color space, the media used, the environmental conditions, the subjective perception about your own photo, etc.... This means the printing suggestion may not completely match with your own personal opinion.

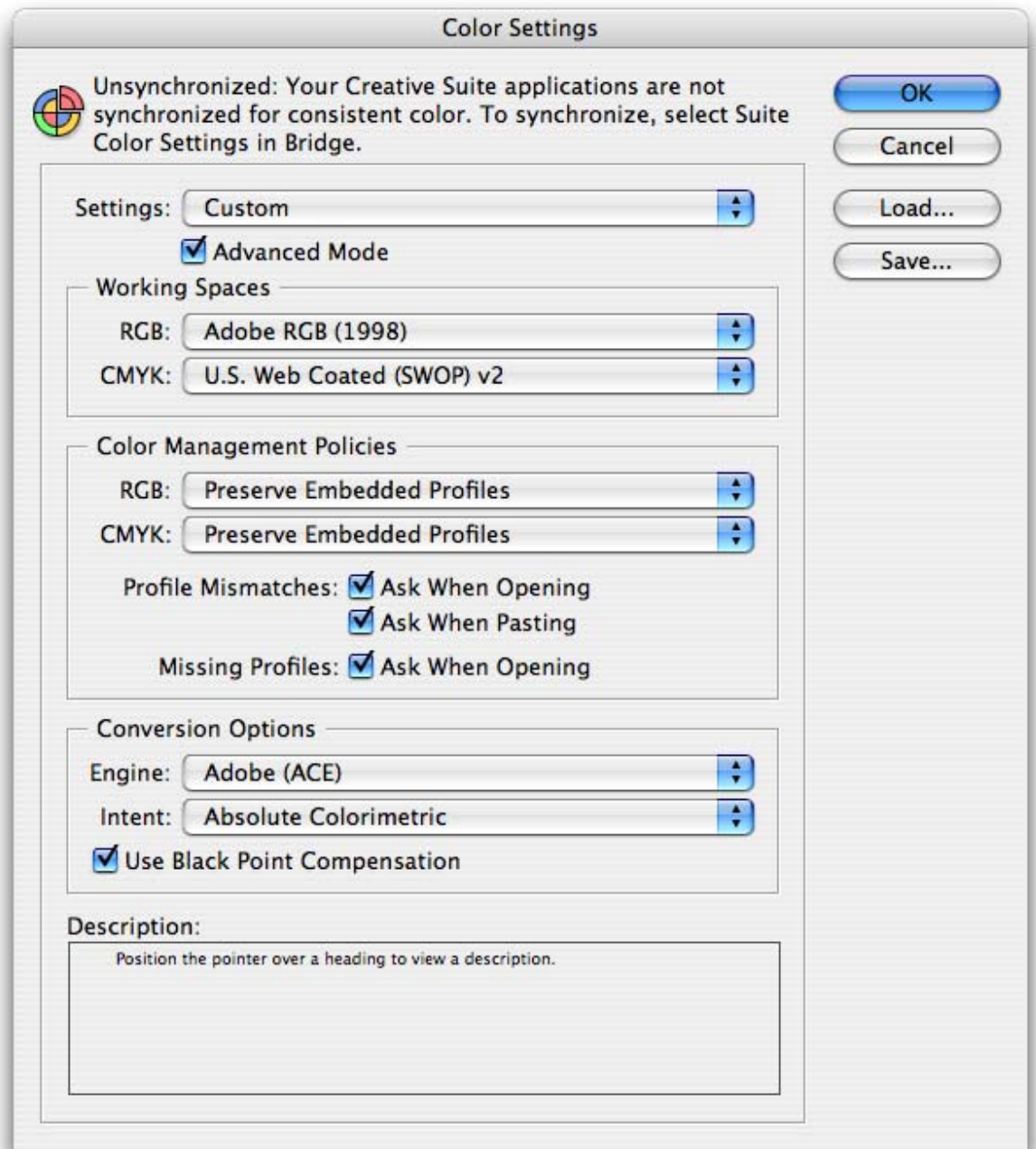
1. First recommendations:

- Refer to [Media type functionality & features](#) and choose the most appropriate media.
- It is essential that you have the media type correctly calibrated with the printer, refer to the [Calibrate my printer](#) section.
- In order to get a correct display, it's also essential that you have the monitor profiled, refer to the [Profile my monitor](#) document.
- If the paper that you are using is not listed, or if you cannot find a paper type that resembles yours closely enough, we strongly recommend creating a new Custom Paper Type. You can add a custom paper automatically by using the HP Color Center; refer to the [Add and profile a new paper type](#) document.

2. Open Adobe InDesign CS2.

3. Configure the Color Settings, **Edit menu > Color Settings...**:

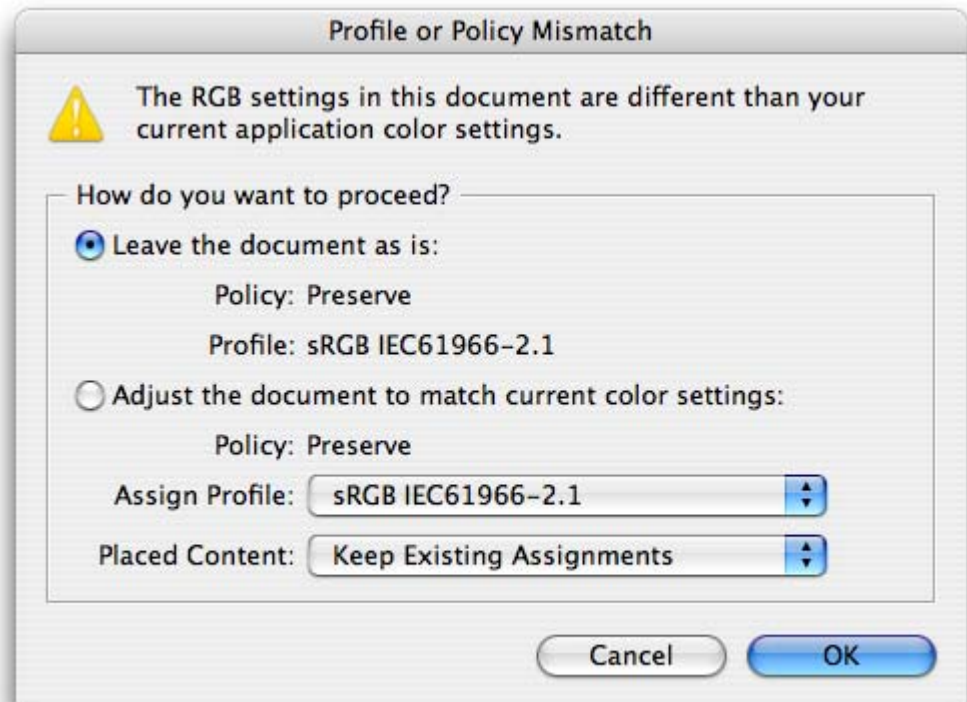
- Make sure the **Advanced Mode** check box is ticked.
- **Working Spaces > RGB**: Select profile of the scanner or camera you have used to get the photo (source profile), if you don't have it, Adobe RGB (1998).
- **Working Spaces > CMYK**: Europe ISO Coated FOGRA27 (for Europe), U.S. Web Coated (SWOP) v2` (for US) and Japan Standard v2 (for Japan).
- **Color Management Policies**: Select **Preserve Embedded Profiles**.
- **Profile Mismatches**: Check **Ask When Opening** and **Ask When Pasting**.
- **Missing Profiles**: Check **Ask When Opening**.
- **Conversion Options > Intent**: Relative Colorimetric (or Absolute Colorimetric if you want to simulate the white of the final paper).



- Select **OK**.

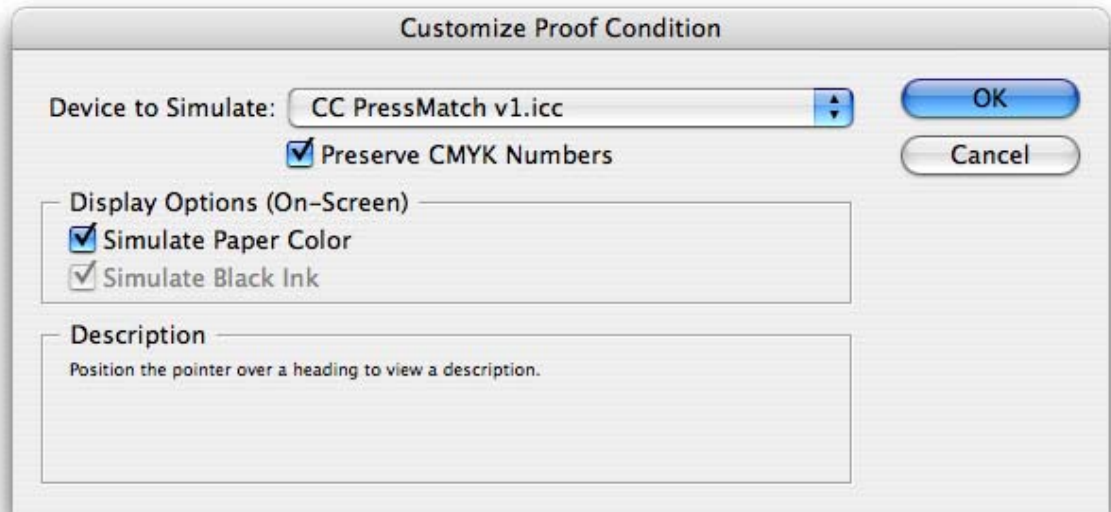
4. Open the image, **File menu > Open...**:

If the document has an embedded color profile that does not match the current working space, select **Leave the document as is**. Otherwise, select **Adjust the document to match current color settings**, if the displayed image does not look correct, try assigning it to other color spaces with **Edit menu > Assign Profiles...** until you are satisfied.



- Select **OK**.
5. Place the images if needed, **File menu > Place...**, browse the image and click **Open...**
  6. So that you get a good display select a High Quality Display, **View menu > Display performance > High Quality Display**.
  7. Make sure you have configured the **Document Setup** appropriately for your document, **File menu > Document Setup...**

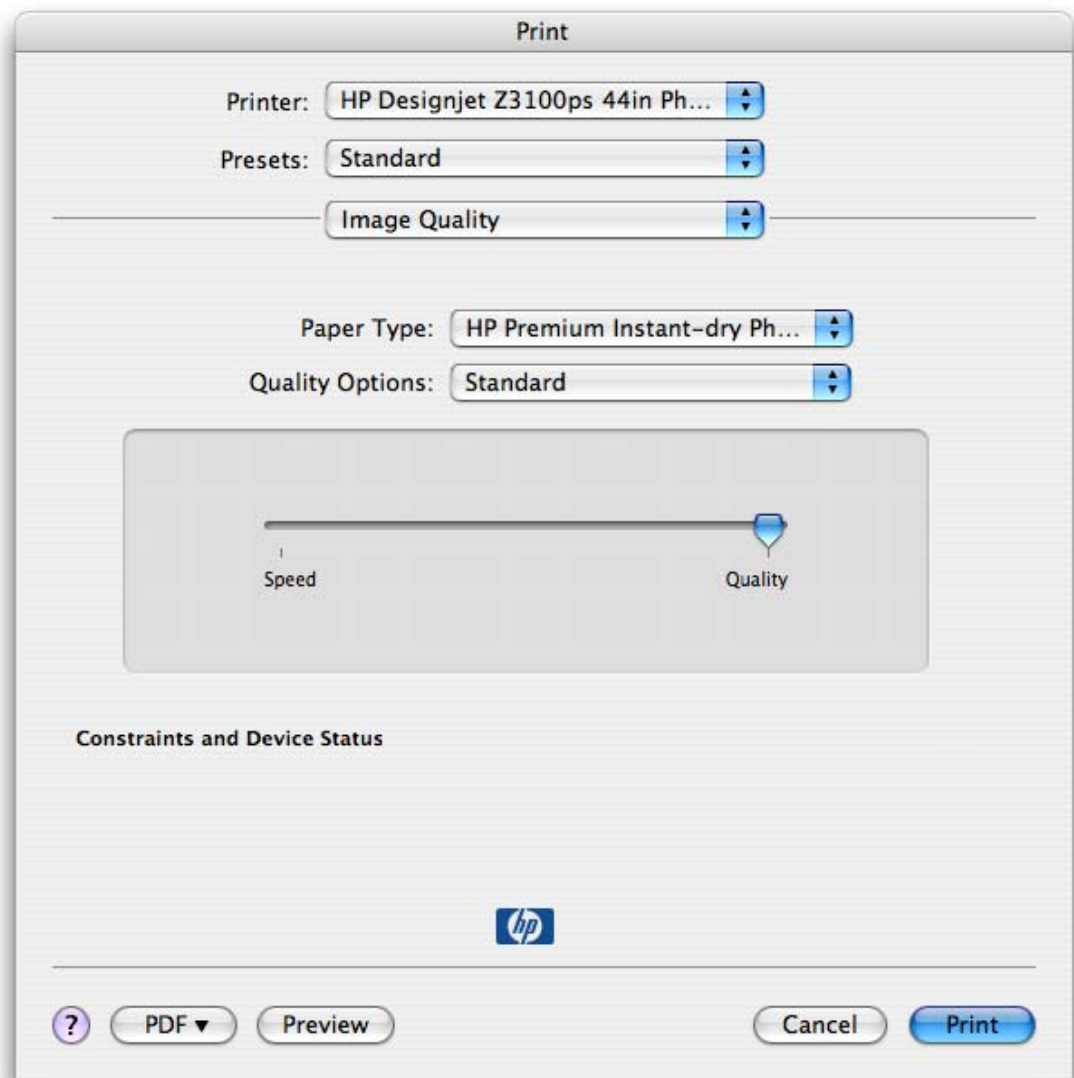
8. Configure the **Proof Setup** dialog box in order to simulate what your final output on a printing press will look like, **View menu > Proof Setup > Custom...**:
  - **Device to Simulate**: Select the profile of the output device you want to proof. If you don't have it on the list, you should copy it in the next folder:  
*/Library/ColorSync/Profiles.*
  - Check **Preserve CMYK/RGB Numbers** checkbox. This option determines how InDesign handles colors that do not have a color profile associated with them.
  - Check **Simulate Paper Color**. This setting only affects the display, check it if you want to emulate the white of the paper and its influence on the rest of the color.



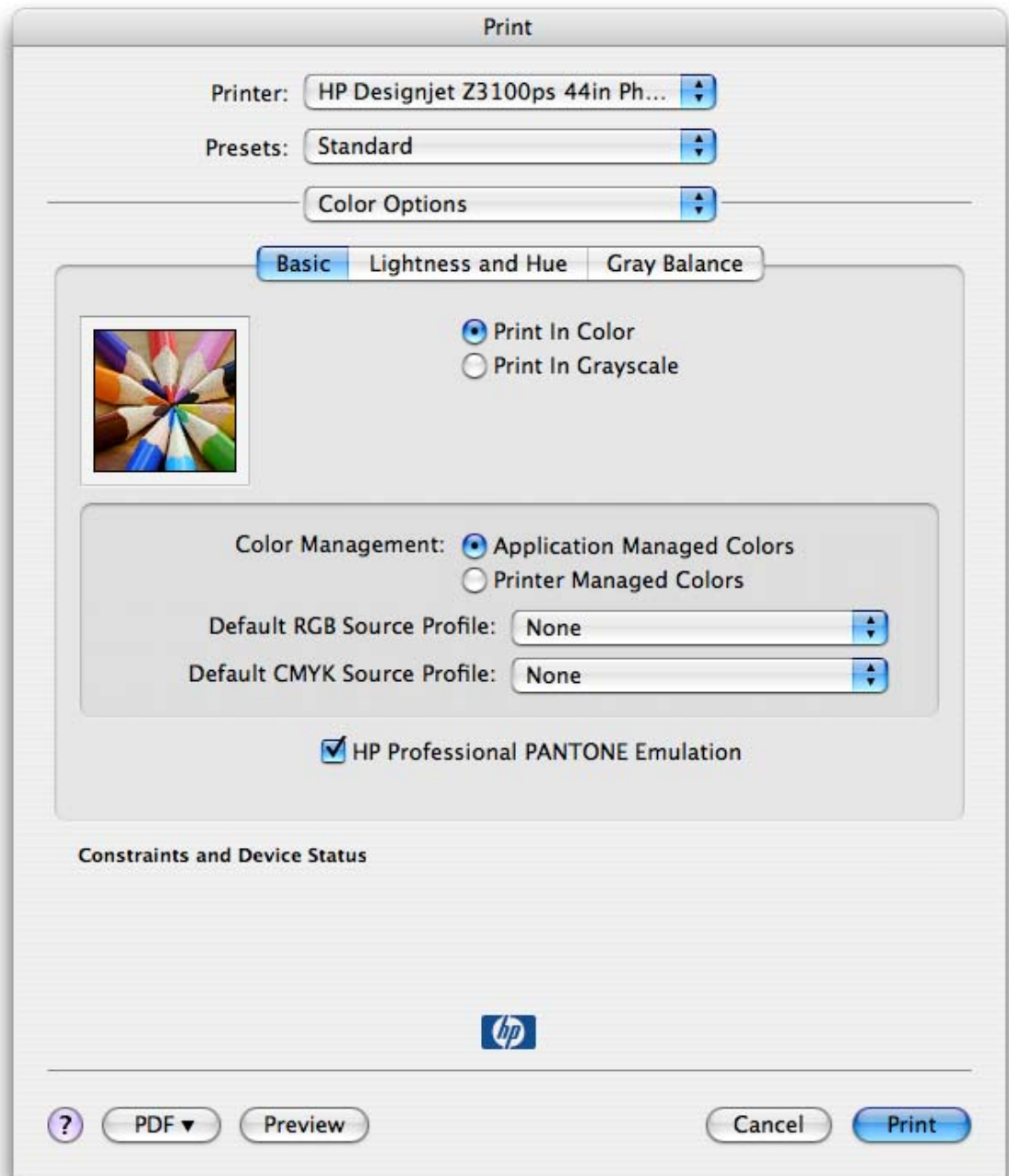
- Select **OK**.

9. **File menu > Print...:**

- **Printer:** Select the printer (ex. HP Designjet Z3100ps 44in Photo).
- **Page Setup...** button:
  - **Format for:** Select the printer.
  - **Paper Size:** Select the paper size of the media loaded on the printer.
  - **Orientation:** Select the orientation of your image on the paper.
  - Select **OK**.
- **Printer...** button:
  - Select **Image Quality** in the drop-down menu:
    - **Paper Type:** Select the media type that is loaded on the printer, always calibrated.
    - **Quality Options: Standard** and drag the slider to **Quality**.



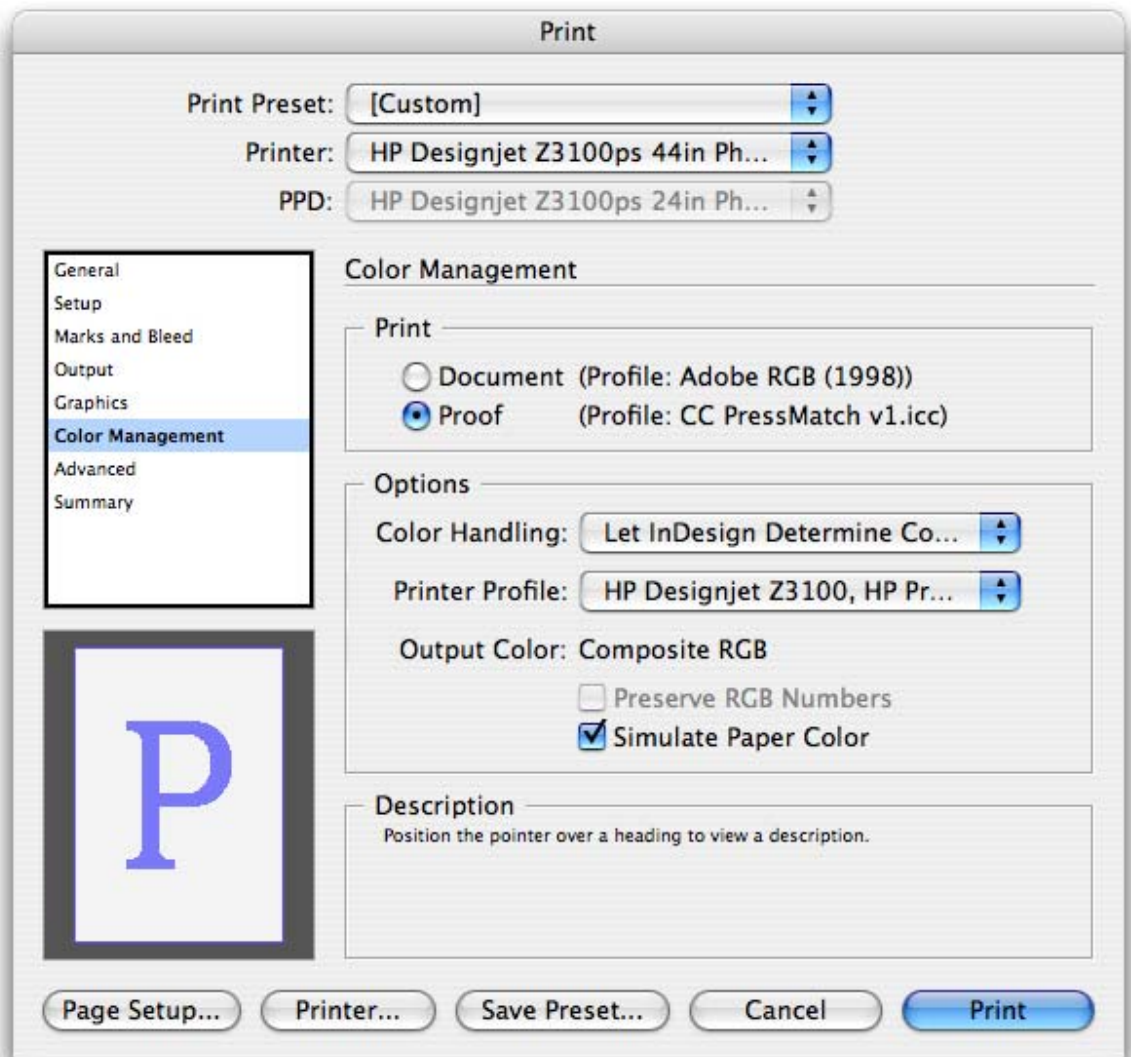
- **Color Options > Basic** tab:
  - Select **Print in Color**.
  - Select **Color Management > Application Managed Colors**.



- Select **Print**.

10. Adobe InDesign **Print...** settings:

- **Setup** (left hand menu):
  - **Paper Size:** Defined By Driver.
  - **Options:** Select the scaling option you need.
- **Output** (left hand menu):
  - **Color:** Select **Composite RGB**.
- **Color Management** (left hand menu):
  - **Print:** Proof.
  - **Options > Color Handling:** Let InDesign Determine Colors.
  - **Options > Printer Profile:** Select the profile of the printer and media type you will use to print. If you are printing on photo gloss paper, select the right color profile with the gloss enhancement feature (GE ON).
  - Check **Simulate Paper Color** checkbox.



- Select **Print**.



For more information on HP Designjet products

[www.hp.com/go/designjet](http://www.hp.com/go/designjet)

© 2007 Hewlett-Packard Development Company, L.P. The information contained herein is subject to change without notice. The only warranties for HP products and services are set forth in the express warranty statements accompanying such products and services. Nothing herein should be construed as constituting an additional warranty. HP shall not be liable for technical or editorial errors or omissions contained herein.

Adobe InDesign and PostScript are trademarks of Adobe Systems Incorporated. PANTONE is Pantone, Inc.'s check-standard trademark for color.

Rev. 1.0, 05/2007

