

Start Here

HP Photosmart D7500 series



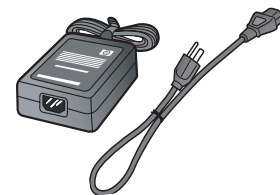
1 Do not connect the USB cable until prompted in step 9



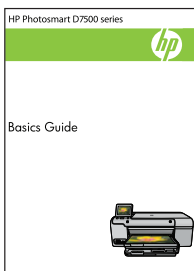
2 Box Contents



Installation CD



Power Cable



Basics Guide



Color Cartridges



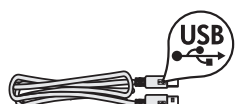
Printhead



4 X 6 photo paper *



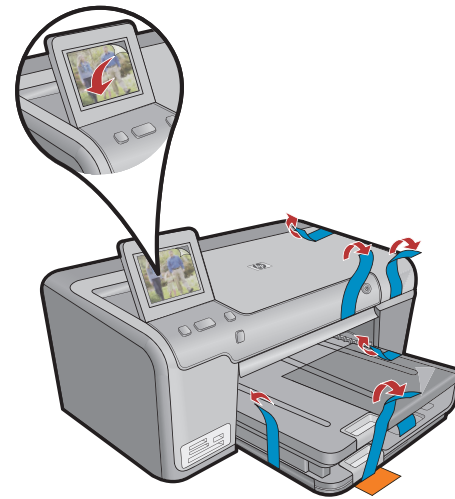
Printable CD *



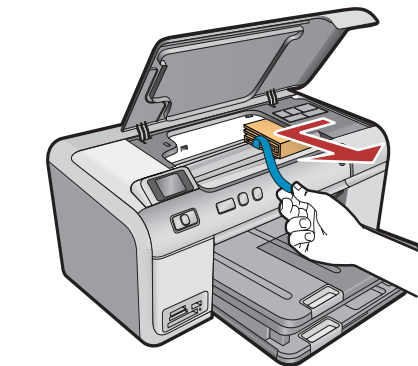
USB Cable *

* May be included

3 Remove packaging

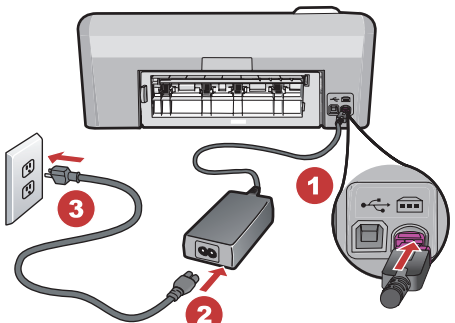


a. Remove all tape from the device. Remove the protective film from the display.

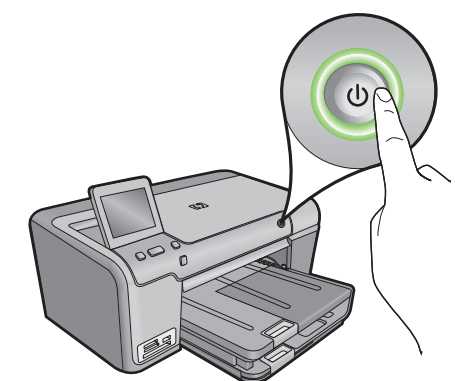


b. Open the device and remove all the packaging materials from inside the device.

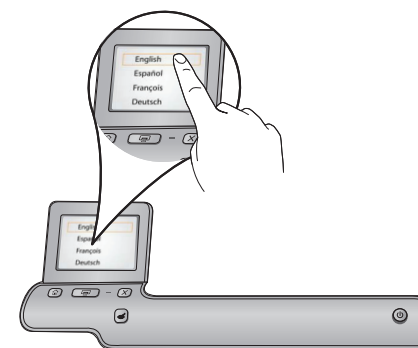
4 Connect power



a. Connect the power cord and adapter.

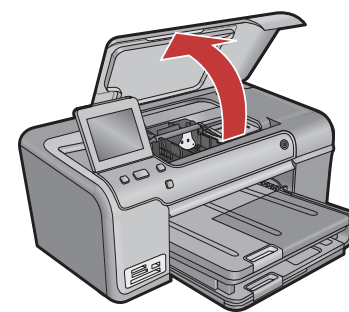


b. Press to turn on the HP Printer.

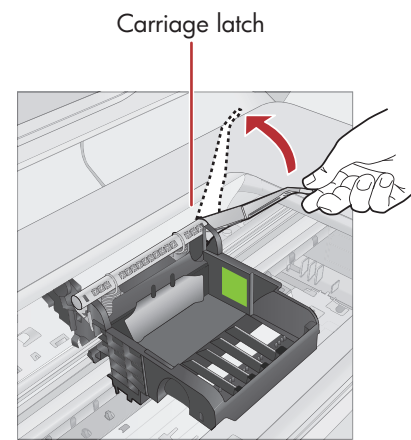


c. If prompted, select your language and country/region.

5a Install the printhead



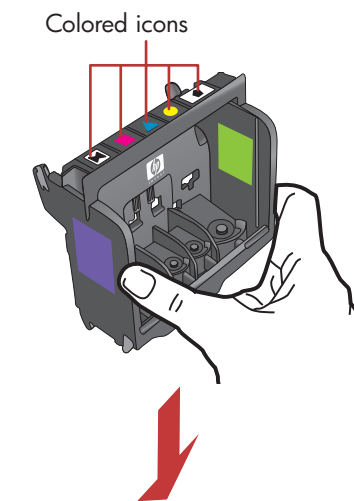
a. Open the ink cartridge access door.



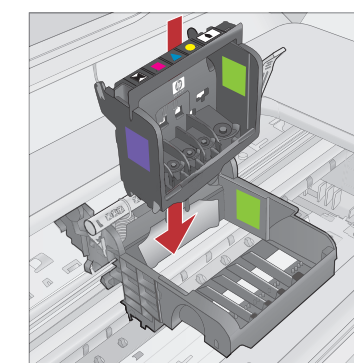
b. Firmly raise the gray latch, as shown.



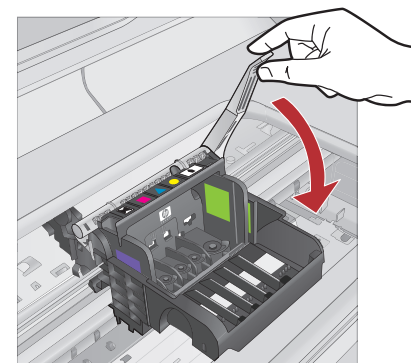
c. Remove the printhead from the packaging. **Do not touch** the copper colored contacts. **Do not scratch** the contacts on the printer or other surface.



d. Hold the printhead upright, as shown.



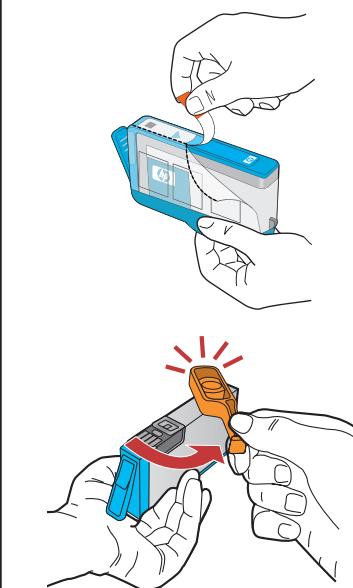
e. Lower the printhead into the device so that the purple and green blocks on the printhead are aligned with the purple and green blocks on the device.



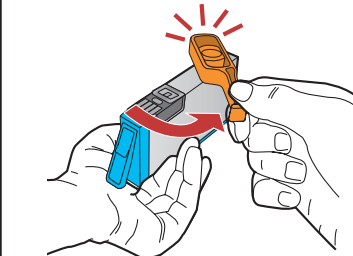
f. Slowly lower the latch.

5b Install the ink cartridges

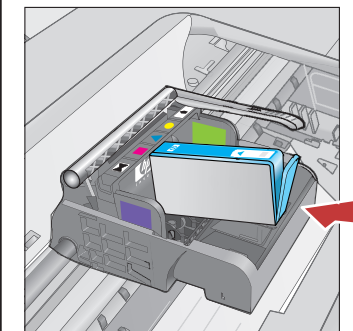
IMPORTANT: You must complete step 5a before installing ink cartridges.



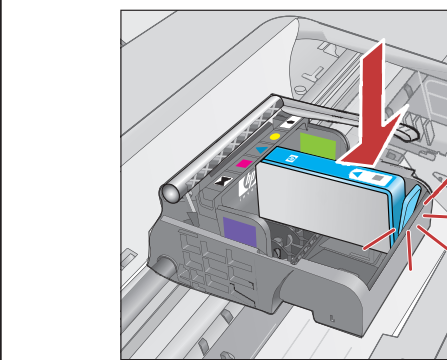
a. Remove the plastic wrap by pulling the orange tab.



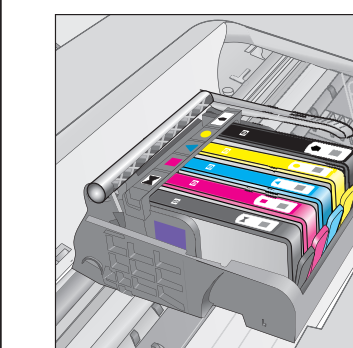
b. Twist the orange cap to snap it off.



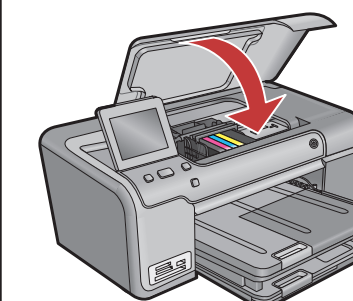
c. Turn the ink cartridge over, slide it into the appropriate slot, then press down until it clicks into place.



d. Repeat steps a, b, and c for all ink cartridges.

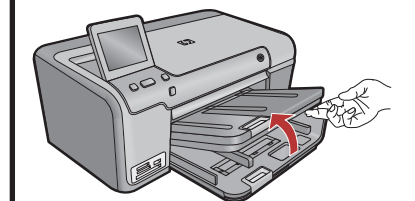


e. Close the ink cartridge access door. The initialization process begins, which takes several minutes. You will hear the device making noises.

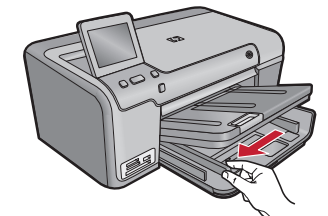


While the initialization process continues, proceed to the next step to load paper.

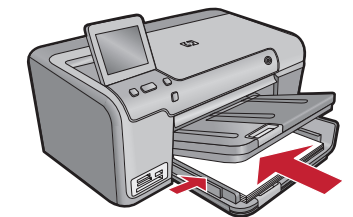
6 Load paper



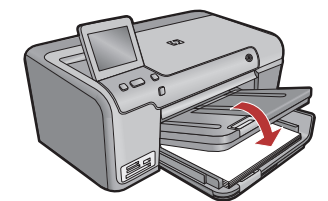
a. Lift the output tray.



b. Slide the paper-width guide to the left.

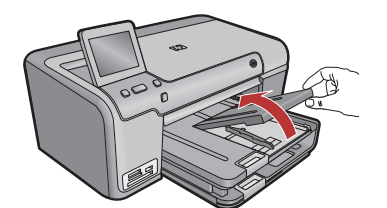


c. Insert **plain white paper** into the main tray and slide the paper guides against the paper.

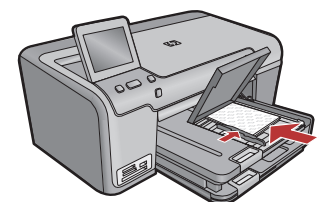


d. Lower the output tray and touch **OK**.

7 Load photo paper

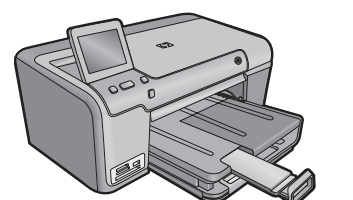


a. Lift the photo tray lid.



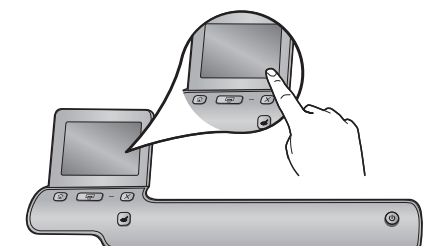
b. Load photo paper with the **glossy side down** in the photo tray. Slide the paper guides against the photo paper.

c. Lower the photo tray lid until it is fully closed.

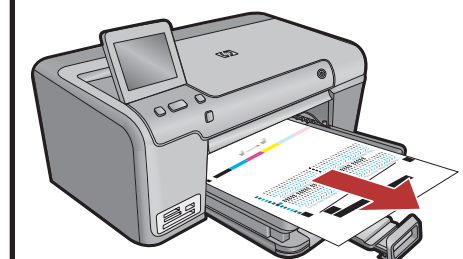


d. Pull out the tray extender and lift up the paper catch.

8 Print the alignment page



a. After you have loaded paper, touch the **OK** button, then wait a few minutes while the alignment page is printed.



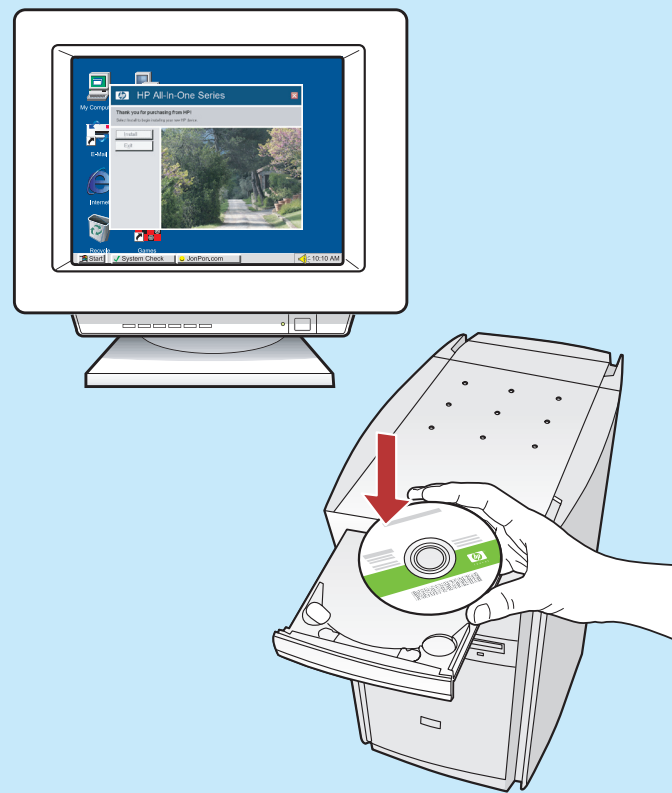
b. After the alignment page is printed, alignment is complete. Touch the **OK** button.



Q8440-90030

9 Install the software - Windows

A

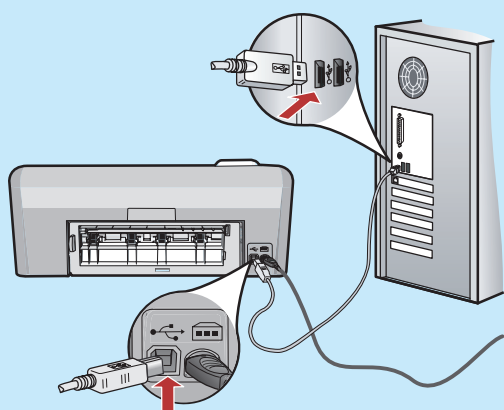
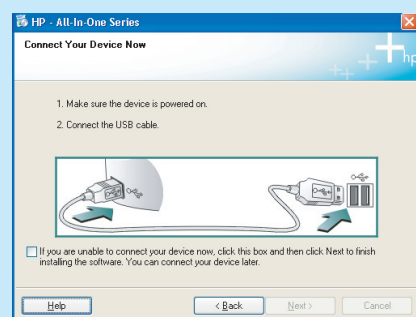


NOTE: Do not attach the USB cable until prompted.

a. Turn on your computer, login if necessary, and then wait for the desktop to appear. Insert the CD and follow the onscreen instructions.

IMPORTANT: If the startup screen does not appear, double-click **My Computer**, double-click the **CD-ROM** icon with the HP logo, and then double-click **setup.exe**.

B

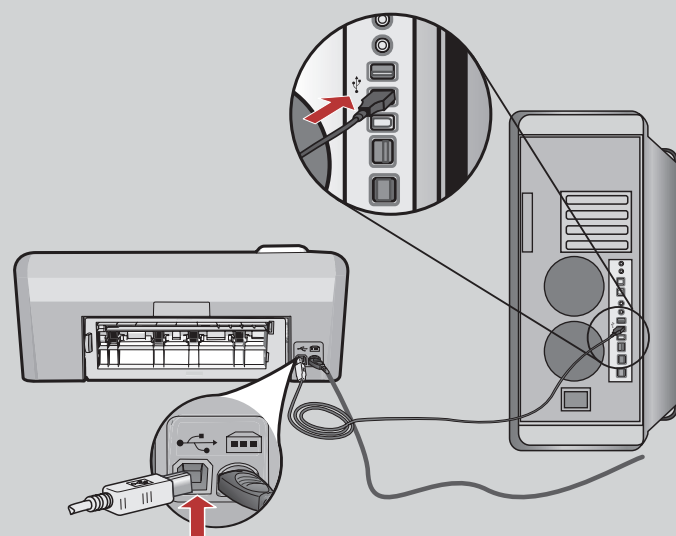


IMPORTANT: Purchase a USB cable separately if it is not included.

b. Once the USB prompt appears, connect the USB cable to the port on the back of the HP Printer, and then to any USB port on the computer. Follow the onscreen instructions to complete the software installation.

9 Install the software - Mac

A



IMPORTANT: Purchase a USB cable separately if it is not included.

a. Connect the USB cable to the port on the back of the HP Printer, and then to any USB port on the computer.

B



b. Insert the CD.

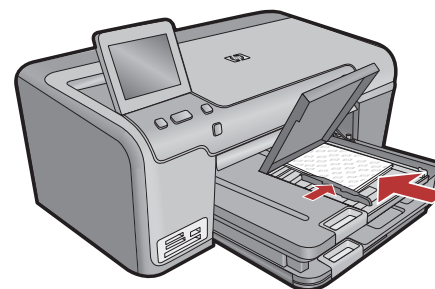
c. Double-click the **HP Installer** icon. Follow the onscreen instructions.

d. Complete the **Setup Assistant** screen.

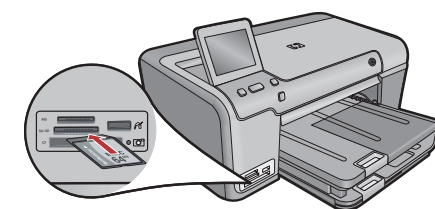
Explore the features

Now that your HP Photosmart software program is installed on your computer, you can try out one of the features on the HP Printer.

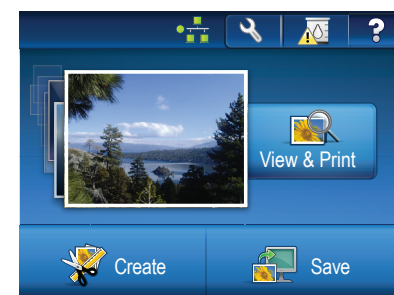
Print a photo from a memory card



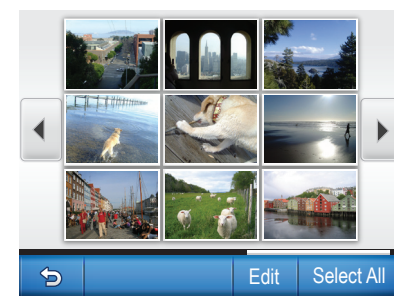
a. If you have not already done so, load photo paper in the photo tray.



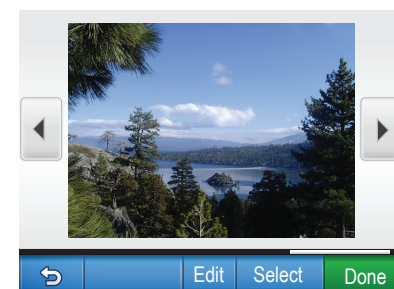
b. Insert the memory card from your camera into the appropriate memory card slot in the HP Printer.



c. When the Photo menu appears in the display, touch **View & Print**.



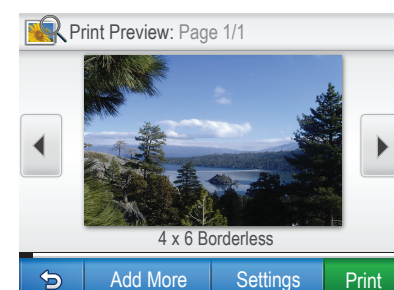
d. Touch the arrows to view the desired photo, then touch the photo to view it.



e. Touch **Select** to display photo options.

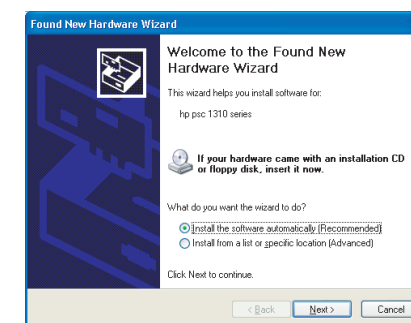


f. Touch the up arrow to change the number of photos to print.



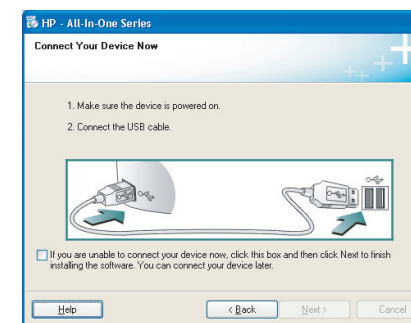
g. Press **PRINT PHOTOS**.

Troubleshooting



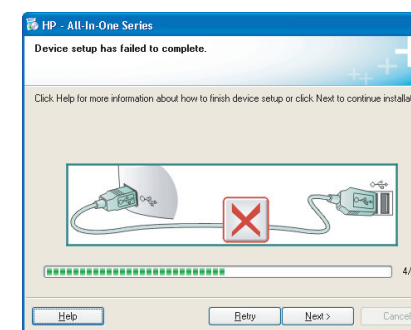
Problem: (Windows) The Microsoft Add Hardware screen appears.

Action: Cancel all screens. Unplug the USB cable, and then insert the HP CD.



Problem: (Windows only) You did not see the screen prompting you to connect the USB cable.

Action: Cancel all screens. Remove, and then re-insert the HP CD.



Problem: (Windows only) The **Device Setup Has Failed To Complete** screen appears.

Action: Unplug the device and plug it in again. Check all connections. Make sure the USB cable is plugged into the computer. Do not plug the USB cable into a keyboard or a non-powered USB hub.

Use HP software



Windows: The HP Solution Center provides convenient access to many features of your HP device and software, including device status, settings, supplies ordering, and help.



Mac: HP Photosmart Studio allows you to organize, manage, and edit your images and videos.

Need more information?



www.hp.com/support



Printed in [country] - English
Printed in [country] - English

© 2008 Hewlett-Packard Development Company, L.P.