



## Calibrate my printer

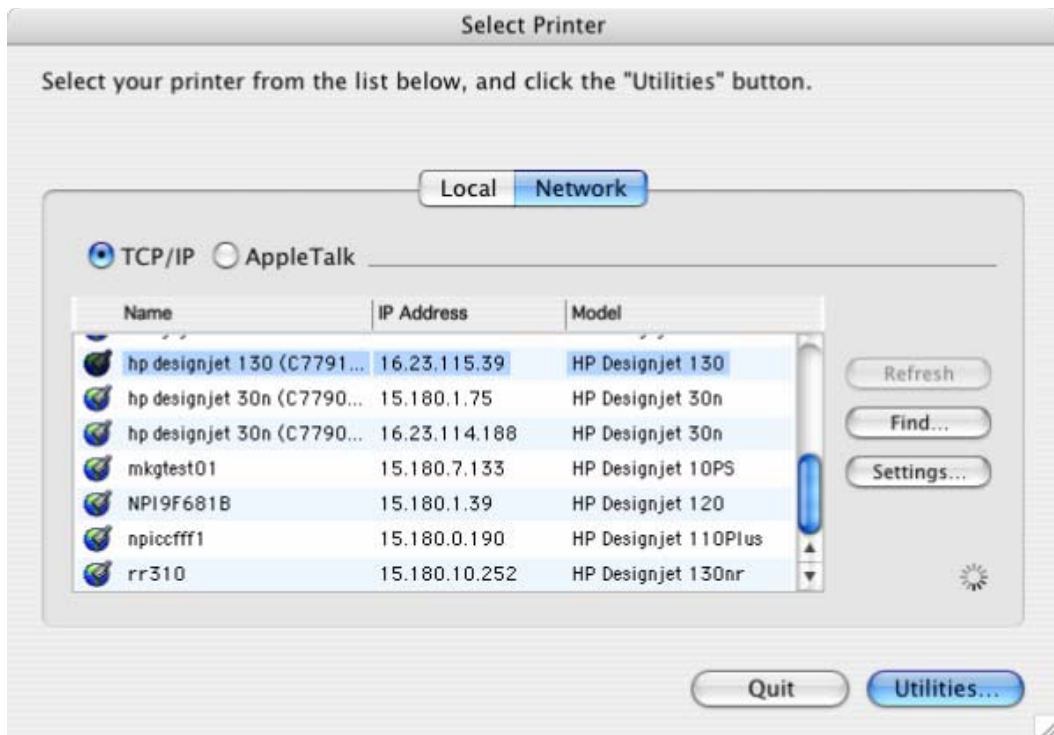
Printer: HP Designjet 30/90/130 series

Software: HP Driver

Operating System: Mac OS X

The color calibration must be performed whenever:

- A printhead is changed
  - A new combination of paper type and printmode is loaded which has not been previously calibrated.
  - The environmental conditions change (for example, temperature or humidity)
  - You notice a deterioration in the quality of your prints.
1. To start the calibration process, load your paper into the printer and click on the **Color Calibration** desktop icon.
  2. Select the printer you are working with:



- Click **Utilities...**
3. The System Maintenance page will be open. You will see the calibration information for different paper types and print quality at the top. To calibrate select the next:
    - **Color Calibration Paper Type:** Select the media that is loaded on the printer.
    - **Print Quality:** Select the quality in which you are going to print.

Color Calibration Paper Type	Print Quality			
	Best	Delete	Maximum DPI	Delete
Coated Paper	Not calibrated	<input type="checkbox"/>	Not calibrated	<input type="checkbox"/>
Heavyweight Coated Paper	Not calibrated	<input type="checkbox"/>	Not calibrated	<input type="checkbox"/>
Photo Matte	Not calibrated	<input type="checkbox"/>	Not calibrated	<input type="checkbox"/>
Photo Paper	Obsolete ( 04-01-2004 )	<input type="checkbox"/>	Not calibrated	<input type="checkbox"/>
Photo Satin	Not calibrated	<input type="checkbox"/>	Obsolete ( 11-18-2004 )	<input type="checkbox"/>
Proofing Semi-Gloss	Not calibrated	<input type="checkbox"/>	Not calibrated	<input type="checkbox"/>

Select the Color Calibration Paper Type and the Print Quality you want to calibrate for consistent color. The calibration will be applied only for the combination you select. For example, if a calibration is done for Photo Paper and Best Print Quality, color calibration will be applied only for print jobs with Photo Paper and Best Print Quality. For other combinations, you must perform separate color calibrations.

If you need more information about color calibration, including when and how to do it, [click here](#).

To find out which paper belongs to which Color Calibration Paper Type, [click here](#).

Make sure a sheet of the selected Color Calibration Paper Type is loaded into the paper source you choose.

Color Calibration Paper Type

Print Quality

Paper Source

Click the **calibrate color** button to begin color calibration. This operation takes about 15 minutes.

- Click **calibrate color**.
4. The printer will print and measure the linearization target. If you see a checkmark at the bottom of the page, the calibration was successful.



For more information on HP Designjet products

[www.hp.com/go/designjet](http://www.hp.com/go/designjet)

© 2005 Hewlett-Packard Development Company, L.P. The information contained herein is subject to change without notice. The only warranties for HP products and services are set forth in the express warranty statements accompanying such products and services. Nothing herein should be construed as constituting an additional warranty. HP shall not be liable for technical or editorial errors or omissions contained herein.

Adobe Photoshop and PostScript are trademarks of Adobe Systems Incorporated. PANTONE is Pantone, Inc.'s check-standard trademark for color.

Rev. 1.3, 02/2005

