



Calibrate my printer:

Printer: HP Designjet 30/90/130 series

Software: EFI Designer Edition for HP

Operating System: Mac OS X

1. Load your paper into the printer and launch the EFI Designer Edition software.

The color calibration must be performed whenever:

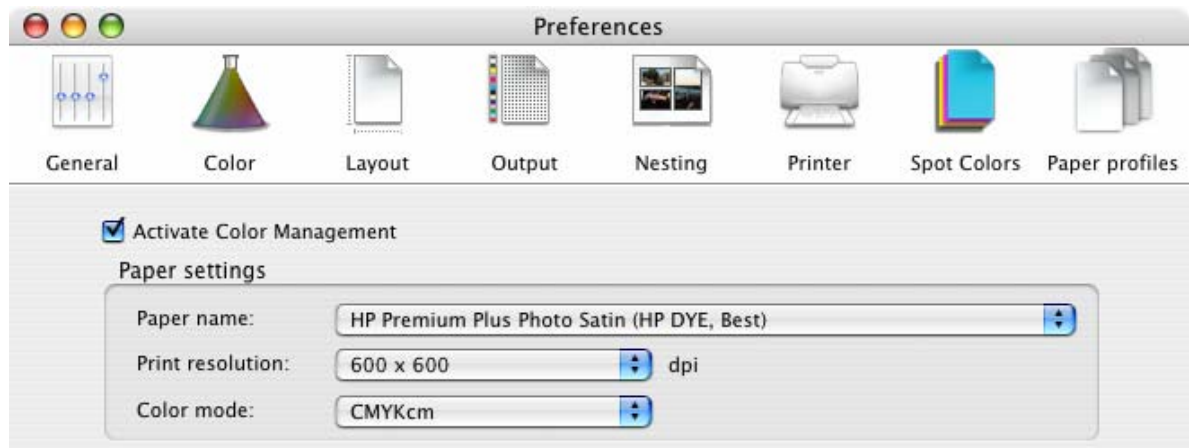
- A printhead is changed.
- A new combination of paper type and print mode is loaded which has not been previously calibrated, see note.
- The environmental conditions change (for example, temperature or humidity)
- You note deterioration in the quality of prints.

Note: To check if your media type and print mode have already been calibrated:

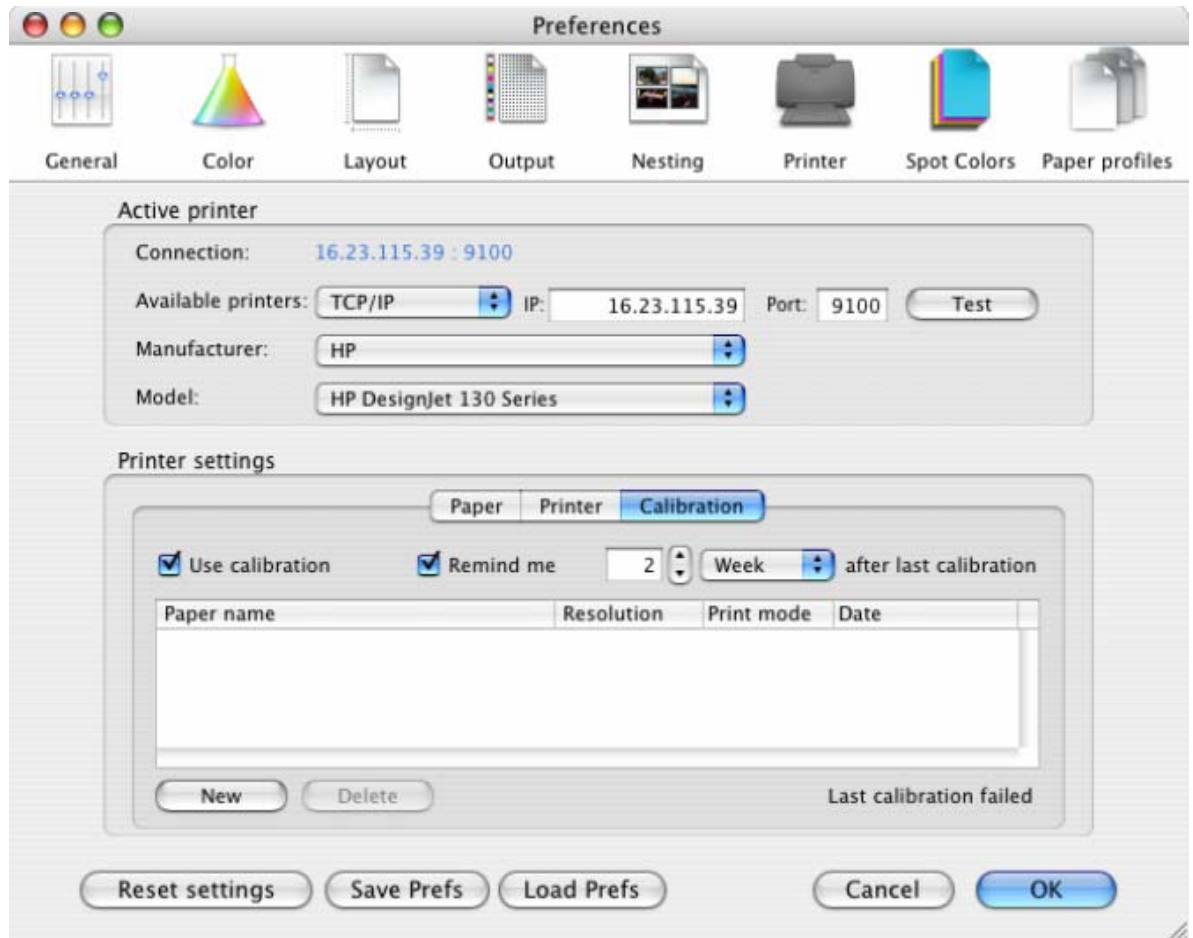
Preferences > Printer > Calibration.

2. To start the calibration process, first, go to **Preferences > Color:**

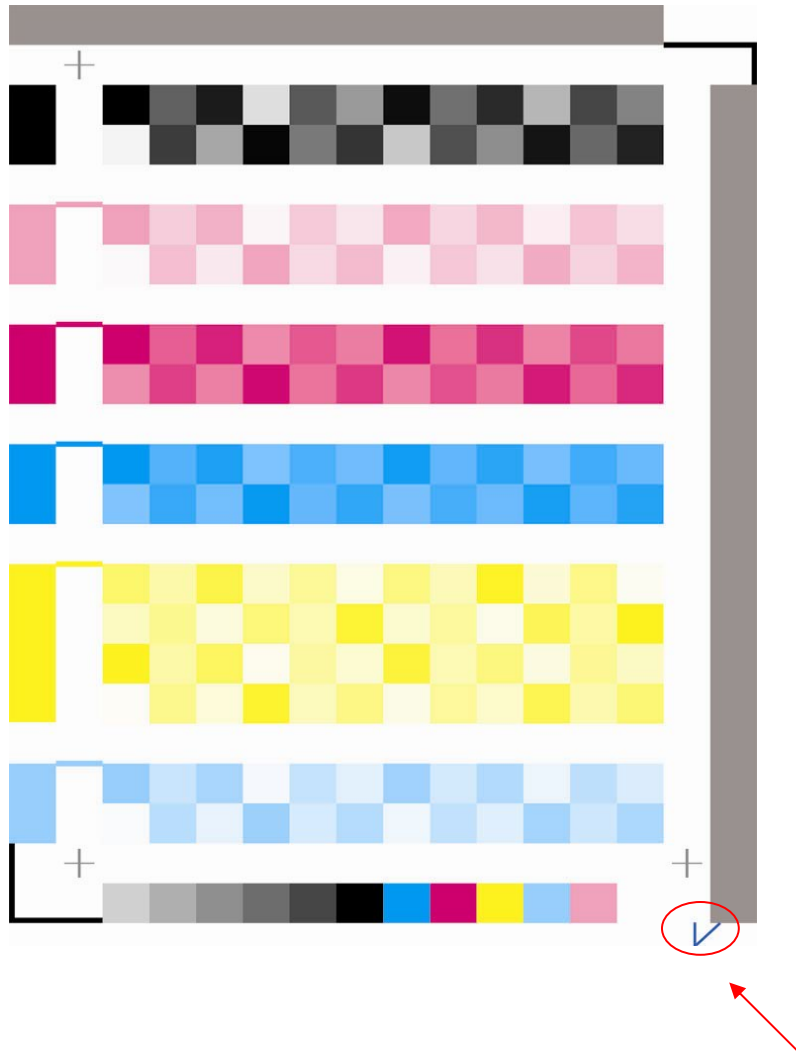
- **Paper name:** Select the paper type that is loaded on the printer and print quality in which you are going to print.
- **Print Resolution:** Select the quality in which you are going to print.



3. Go to **Preferences > Printer > Calibration**, and click **New...**



4. The printer will print and measure the linearization target. If you see a checkmark at the bottom of the page, the calibration was successful.



For more information on HP Designjet products

www.hp.com/go/designjet

© 2005 Hewlett-Packard Development Company, L.P. The information contained herein is subject to change without notice. The only warranties for HP products and services are set forth in the express warranty statements accompanying such products and services. Nothing herein should be construed as constituting an additional warranty. HP shall not be liable for technical or editorial errors or omissions contained herein.

Adobe Photoshop and PostScript are trademarks of Adobe Systems Incorporated. PANTONE is Pantone, Inc.'s check-standard trademark for color.

Rev. 1.3, 02/2005

