

HP LF Printing Knowledge Center



Calibrate my printer:

Printer: HP Designjet 30/130 series

Software: HP Software RIP

Operating System: Windows

1. Load your paper into the printer and launch the HP Designjet RIP software.

The color calibration must be performed whenever:

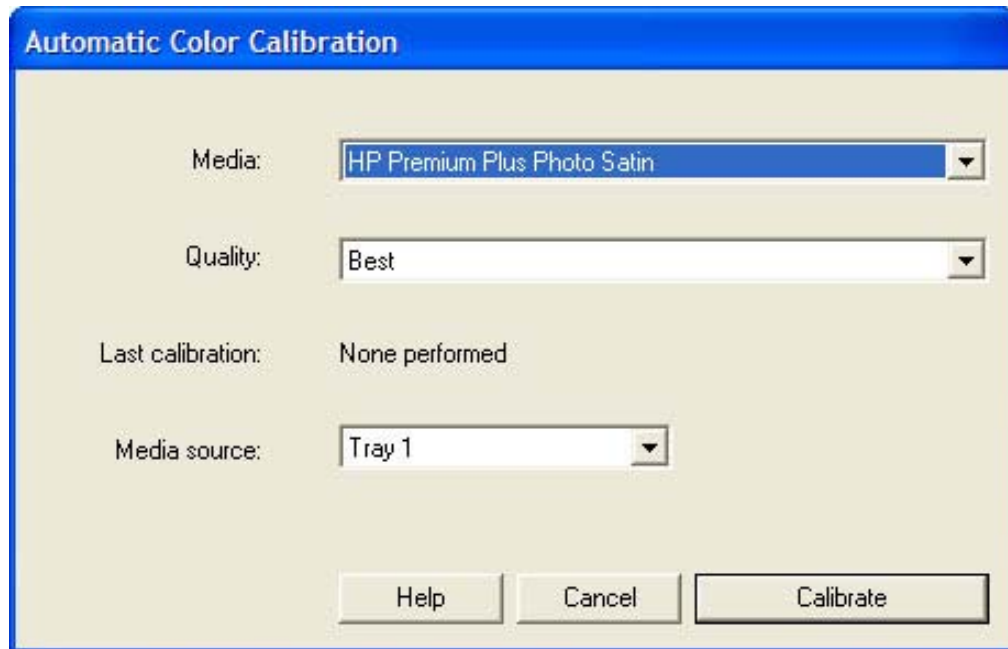
- A printhead is changed
- A new combination of paper type and printmode is loaded which has not been previously calibrated, see note.
- The environmental conditions change (for example, temperature or humidity)
- You note deterioration in the quality of prints.

Note: To check if your media type and print mode have already been calibrated:

Setup menu > Default Settings... > Color Calibration

2. To start the calibration process, go to **Setup menu > Automatic Color Calibration...**:

- **Media:** Select the media that is loaded on the printer.
- **Quality:** Select the quality in which you are going to print.
- **Media Source:** Select the method that the media is loaded.



3. Click **Calibrate**.

4. The printer will print and measure the linearization target. If you see a checkmark at the bottom of the page, the calibration was successful.



For more information on HP Designjet products

www.hp.com/go/designjet

© 2005 Hewlett-Packard Development Company, L.P. The information contained herein is subject to change without notice. The only warranties for HP products and services are set forth in the express warranty statements accompanying such products and services. Nothing herein should be construed as constituting an additional warranty. HP shall not be liable for technical or editorial errors or omissions contained herein.

Adobe Photoshop and PostScript are trademarks of Adobe Systems Incorporated. PANTONE is Pantone, Inc.'s check-standard trademark for color.

Rev. 1.3, 02/2005

