



## Create and print a contact sheet

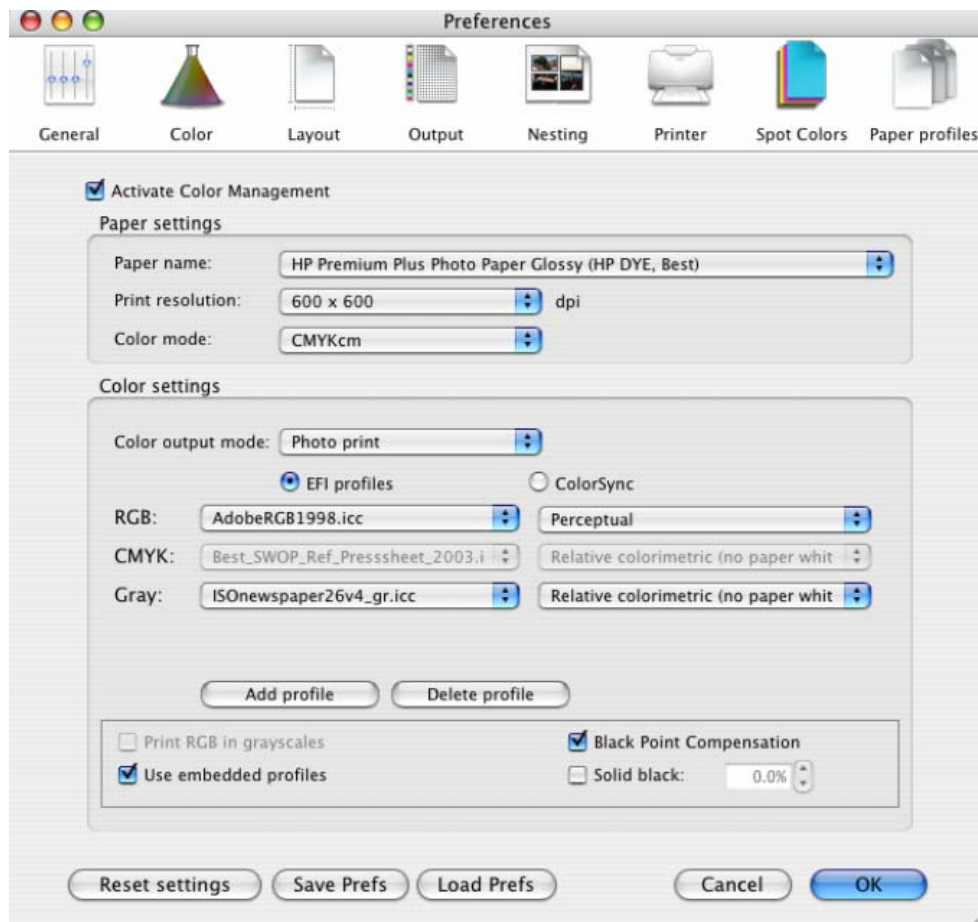
Application: Adobe Photoshop CS

Printer: HP Designjet 30/90/130 series

Software: EFI Designer Edition for HP

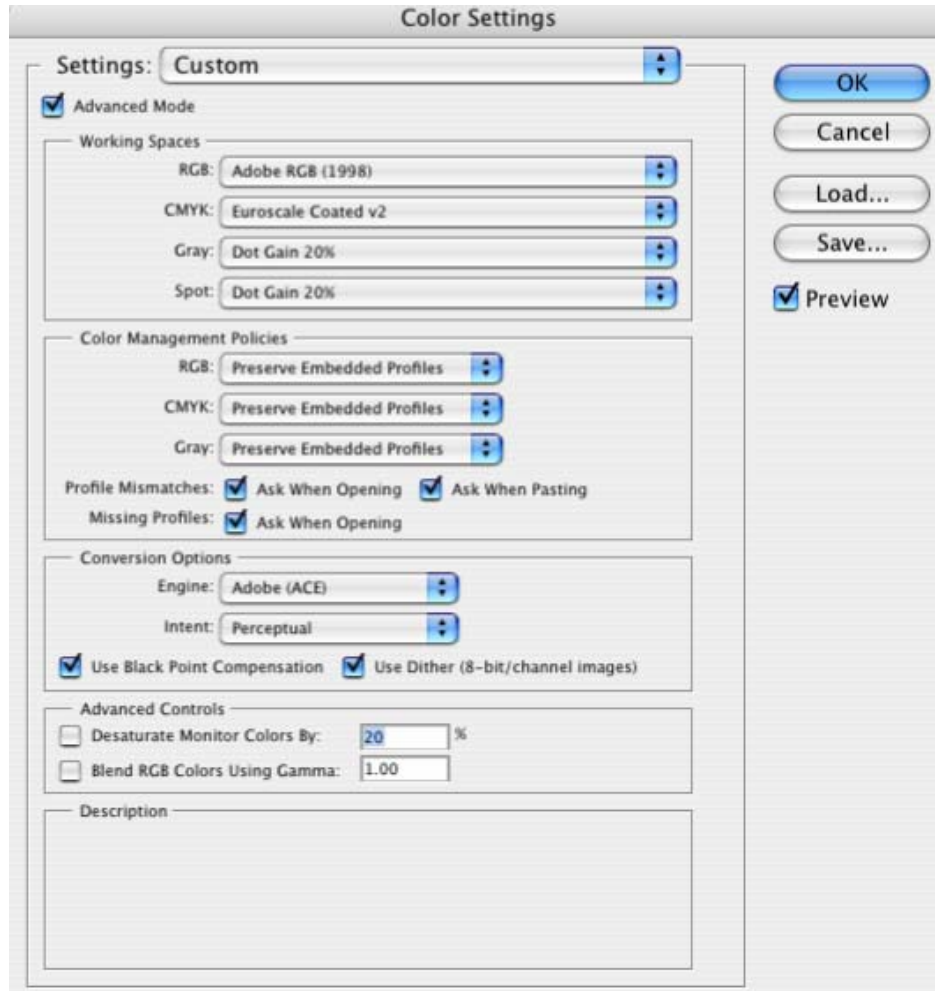
Operating System: Mac OS X

1. First recommendations:
  - See the [Media type functionality & features](#) and choose the most appropriate media.
  - It is essential you have the media type correctly calibrated with the printer and print mode, consult the [Calibrate my printer](#) document.
2. Open the EFI Designer Edition RIP.
3. EFI Designer Edition RIP settings, **Preferences**:
  - **Color:**
    - Check the **Active Color Management** checkbox.
    - **Paper name:** Select the paper type that is loaded on the printer (always calibrated) and “Best” print quality.
    - **Print resolution:** 600 x 600.
    - **Color output mode:** Photo print.
    - You don’t need to worry about the profiles and rendering intent because you will select **Printer Color Management** option in the application, then, the application tells the RIP which source profile and rendering intent should be used for the conversion to the print space, these are the Document profile and the Print Space Intent of the application. The RIP color settings will be overridden.



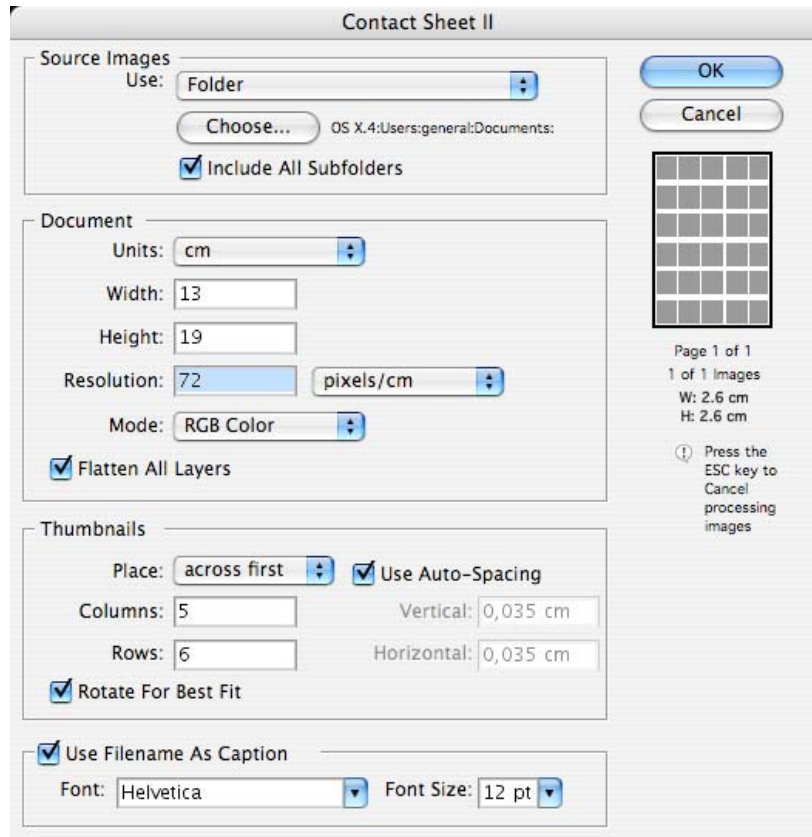
- **OK**
4. Open Adobe Photoshop CS.
  5. Configure the **Color Settings, Photoshop menu > Color Settings...**:

- Make sure the **Advanced Mode** check box is ticked.
- **Working Space > RGB:** select the profile of the scanner or camera you have used to get the photos (source profile), if you don't have it, select Adobe RGB (1998).
- **Working Space > CMYK:** Euroscale Coated v2 (for Europe), U.S. Web Coated (SWOP) v2 (for US) and Japan Standard v2 (for Japan).
- **Color Management Policies:** Preserve the Embedded Profiles.
- **Profile Mismatches:** check **Ask When Opening** and **Ask When Pasting**.
- **Missing Profiles:** check **Ask When Opening**.
- **Conversion Options > Intent:** Perceptual.



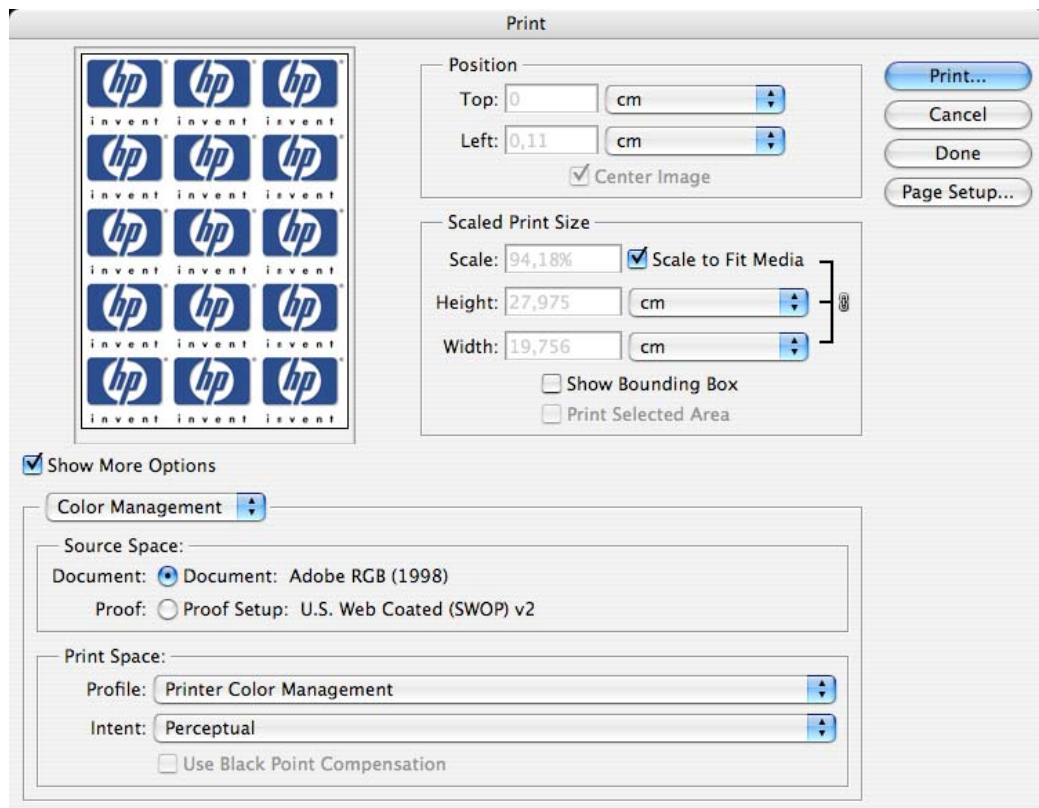
- Click **OK**
5. Create the contact sheet, **File menu > Automate > Contact Sheet II...**:
- **Source Images > Use:** Folder, and then click the **Choose...** button to specify the folder containing the images you want to use. Select **Include All Subfolders** to include images inside any subfolders.
  - **Document:**
    - Specify the **Dimensions** and **Resolution** for the contact sheet.
    - **Mode:** RGB Color.

- **Flatten All Layers:** Select this to create a contact sheet with all images and text on a single layer. Deselect **Flatten All Layers** to create a contact sheet in which each image is on a separate layer and each caption is on a separate text layer.
- **Thumbnails:** Specify layout options for the thumbnail previews. Select **Rotate For Best Fit** to rotate the images, regardless of their orientation, so they fit efficiently on a contact sheet.
- **Use Filename As Caption:** Select this to label the thumbnails using their source image filenames. Use the menu to specify a caption font and font size.



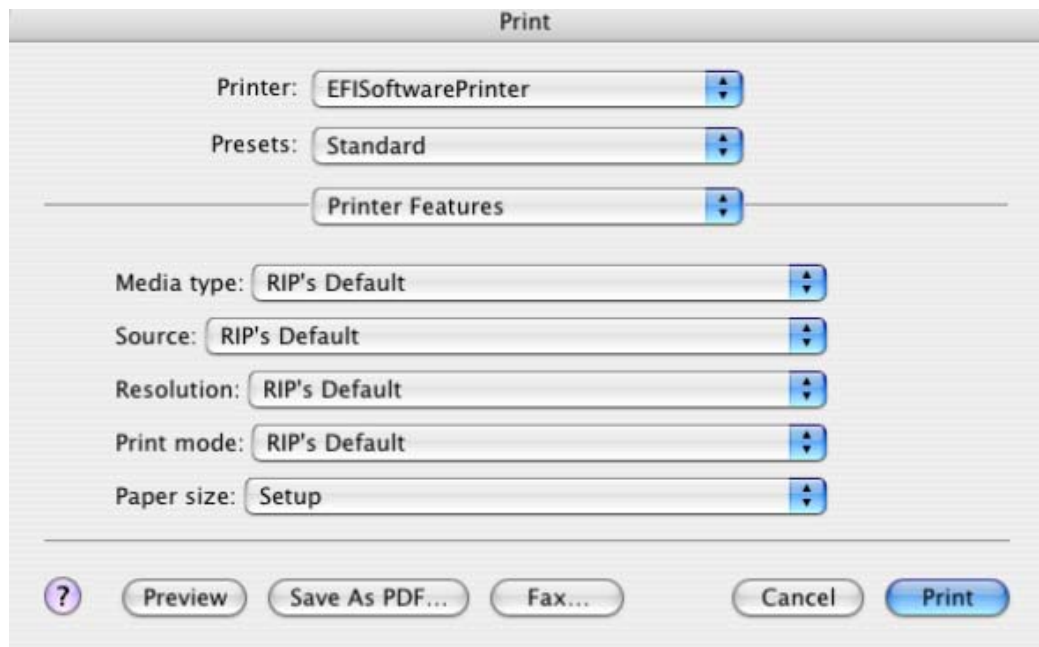
- Click **OK**.
6. Adobe Photoshop **Print with Preview...** settings, **File menu > Print with Preview...**:
- **Page Setup...**:
    - **Format for...:** Select the printer (ex. EFISoftwarePrinter).
    - **Paper Size:** Select the paper size of the media loaded on the printer.
    - **Orientation:** Select the orientation of your image on the paper.
    - Click **OK**.
  - Set the **Position** and the **Scaled Print Size** you need. If the contact sheet is bigger than the print size, select **Scale to Fit Media**.
  - Check **Show More Options**.
  - Select the **Color Management** tab:
    - **Source Space:** Document.
    - **Print Space > Profile:** Printer Color Management.

- **Print Space > Intent:** Perceptual.



7. Printer settings, **Print...**:

- **Printer:** Select the printer (ex. EFISoftwarePrinter).
- **Printer Features** (Mac OS X v10.3):
  - **Paper Size:** Setup.
  - Select **RIP's Default** on the others settings.



- Click **Print**.

For more information on HP Designjet products

[www.hp.com/go/designjet](http://www.hp.com/go/designjet)

© 2005 Hewlett-Packard Development Company, L.P. The information contained herein is subject to change without notice. The only warranties for HP products and services are set forth in the express warranty statements accompanying such products and services. Nothing herein should be construed as constituting an additional warranty. HP shall not be liable for technical or editorial errors or omissions contained herein.

Adobe Photoshop and PostScript are trademarks of Adobe Systems Incorporated. PANTONE is Pantone, Inc.'s check-standard trademark for color.

Rev. 1.0, 09/2005

