



Printing a “match to screen”

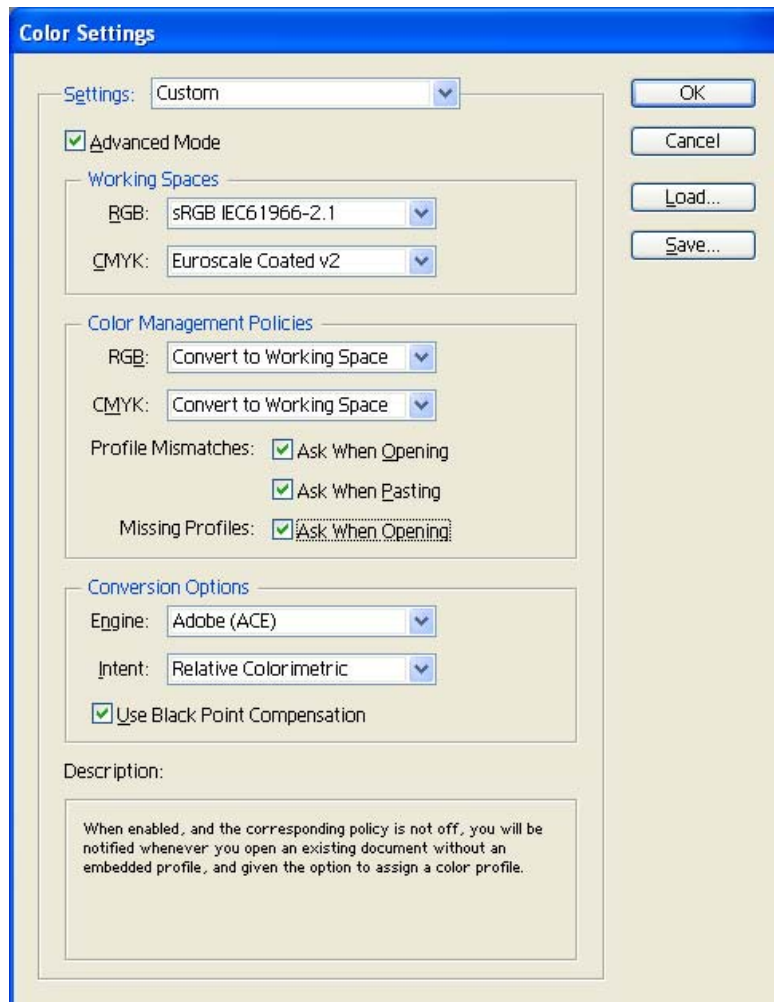
Application: Adobe Illustrator CS

Printer: HP Designjet 30/130 series

Software: HP Software RIP

Operating System: Windows

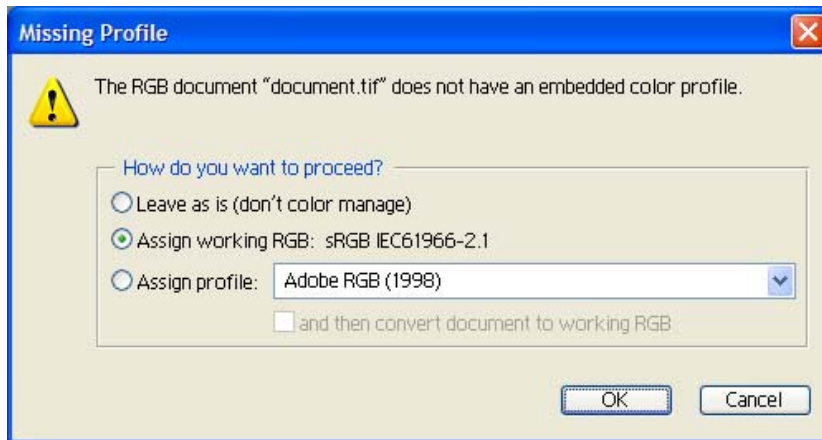
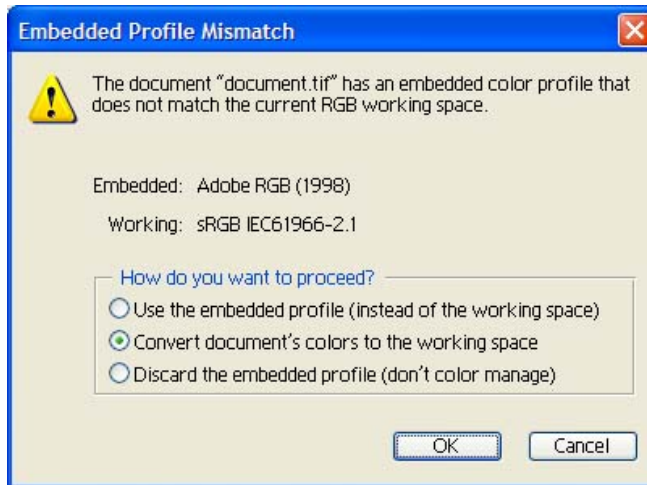
1. First recommendations:
 - See the [Media type functionality & features](#) and choose the most appropriate media.
 - It is essential to have the media type correctly calibrated with the printer and print mode, consult the [Calibrate my printer](#) section.
 - In order to get a correct display, it's also essential to have the monitor profiled, consult the [Profile my monitor](#) section.
2. Open Adobe Illustrator CS.
3. Configure the **Color Settings, Edit menu > Color Settings...**:
 - Make sure the **Advanced Mode** check box is ticked.
 - **Working Space > RGB**: sRGB IEC61966-2.1.
 - **Working Space > CMYK**: Euroscale Coated v2 (for Europe), U.S. Web Coated (SWOP) v2 (for US) and Japan Standard v2 (for Japan).
 - **Color Management Policies**: Convert to working space.
 - **Profile Mismatches**: check **Ask When Opening** and **Ask When Pasting**.
 - **Missing Profiles**: check **Ask When Opening**.
 - **Conversion Options > Intent**: Perceptual (for RGB images) or Relative Colorimetric (for CMYK images).



- Click **OK**.

4. Open the image, **File menu > Open...**:

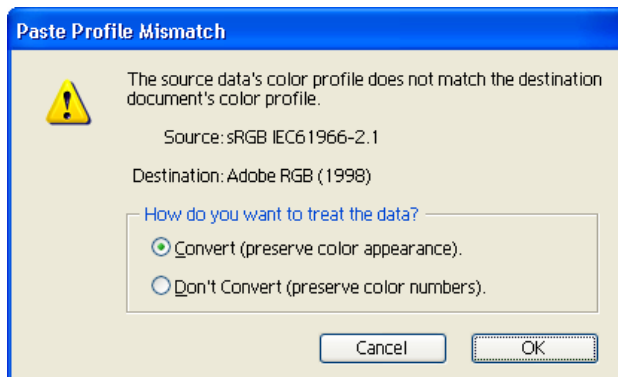
- If the document has an embedded color profile that does not match the current working space, select **Convert document's colors to the current working space**. Otherwise, select **Assign current working space**.



- Click **OK**.

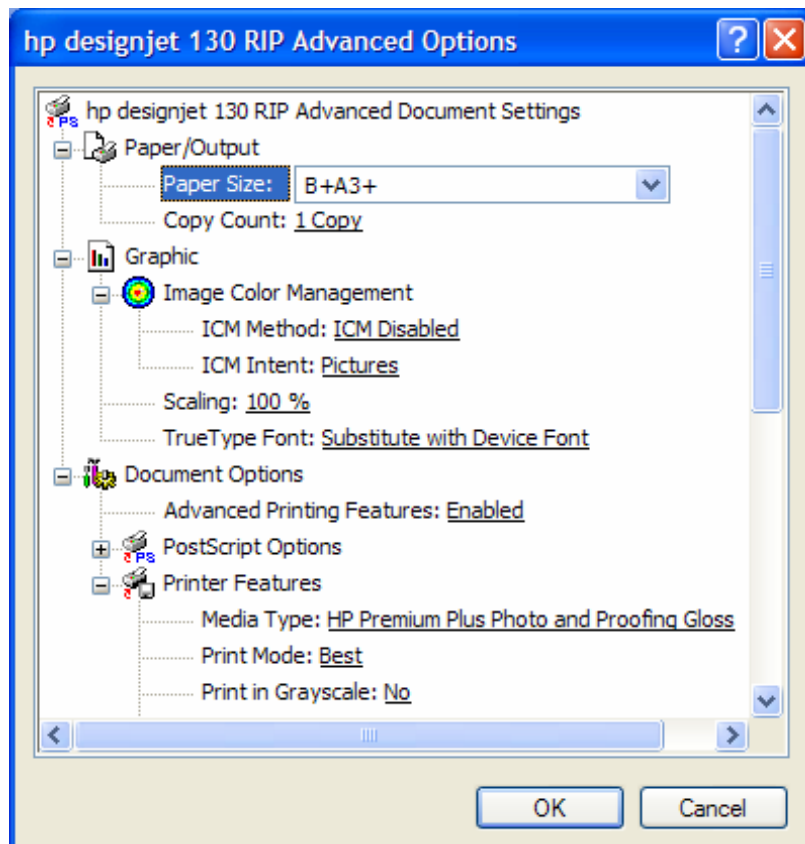
5. If you place an image, you should embed the image in the document. If it has an embedded profile, it will be converted from the embedded color profile to the document color profile preserving the color appearance. If it doesn't have an embedded color profile, Illustrator will assign the document color profile.

- **File menu > Place...**: browse the image and uncheck the **Link** checkbox. If you are asked **How do you want to treat the data?**, select **Convert**.



- Click **OK**.

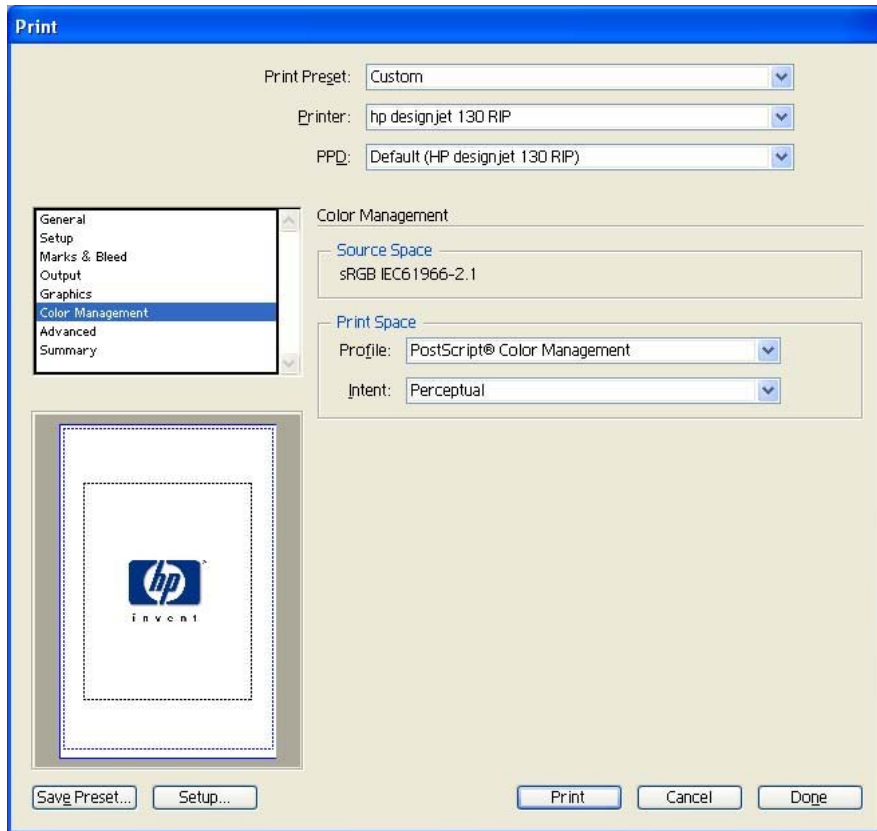
6. Make sure you have configured the **Document Setup** appropriately for your document, **File menu > Document Setup....**
7. RIP settings, **File menu > Print... > Setup... button:**
 - **Select Printer...:** Select the printer (ex. HP designjet 130 RIP).
 - **Preferences:**
 - **Layout** tab:
 - **Orientation:** Select the orientation of your document on the paper.
 - **Advanced...**
 - **Paper/Output > Paper Size:** Select the paper size of the media loaded on the printer.
 - **Document Options > Printer Features:**
 - Select the **Media Type** that is loaded on the printer (always calibrated).
 - **Print Mode:** Best (always calibrated).
 - You don't need to worry about the RIP color settings (Perform Color Correction, CMYK and RGB Input Profiles and Color rendering intent) because you will selected **PostScript Color Management** option in the application, then, the application tells the RIP which source profile and rendering intent should be used for the conversion to the print space, these are the Document profile and the Print Space Intent of the application. The RIP color settings will be overridden.



- Click **OK** until the Illustrator **Print** dialog box.

8. Adobe Illustrator **Print...** settings:

- **General** (left hand menu):
 - **Media > Size:** Defined by Driver.
 - **Options:** Select the scaling option you need.
- **Output** (left hand menu):
 - **Mode:** Composite.
- **Color Management** (left hand menu):
 - **Print Space > Profile:** PostScript Color Management
 - **Print Space > Intent:** Perceptual (for RGB images) or Relative Colorimetric (for CMYK images).



- Click **Print**.

For more information on HP Designjet products

www.hp.com/go/designjet

© 2005 Hewlett-Packard Development Company, L.P. The information contained herein is subject to change without notice. The only warranties for HP products and services are set forth in the express warranty statements accompanying such products and services. Nothing herein should be construed as constituting an additional warranty. HP shall not be liable for technical or editorial errors or omissions contained herein.

Adobe Photoshop and PostScript are trademarks of Adobe Systems Incorporated. PANTONE is Pantone, Inc.'s check-standard trademark for color.

Rev. 1.0, 09/2005

