



Printing a “match to screen”

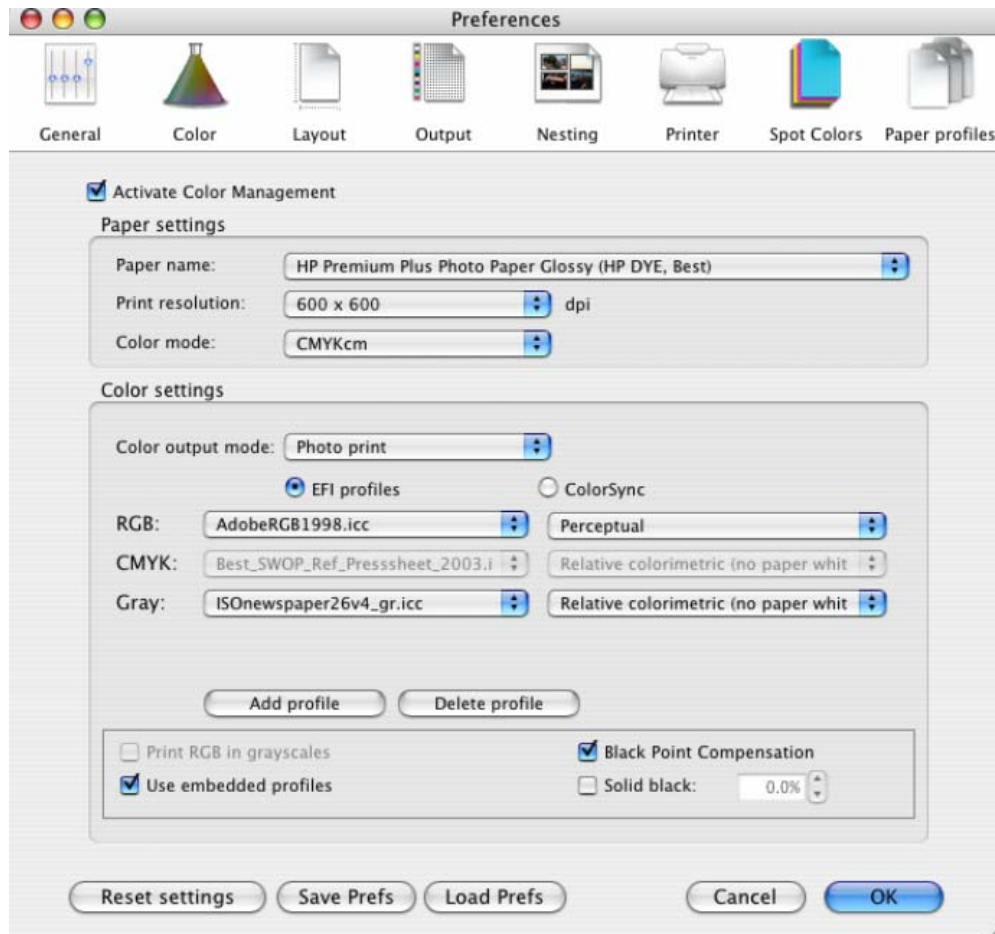
Application: Adobe Illustrator CS

Printer: HP Designjet 30/90/130 series

Software: EFI Designer Edition for HP

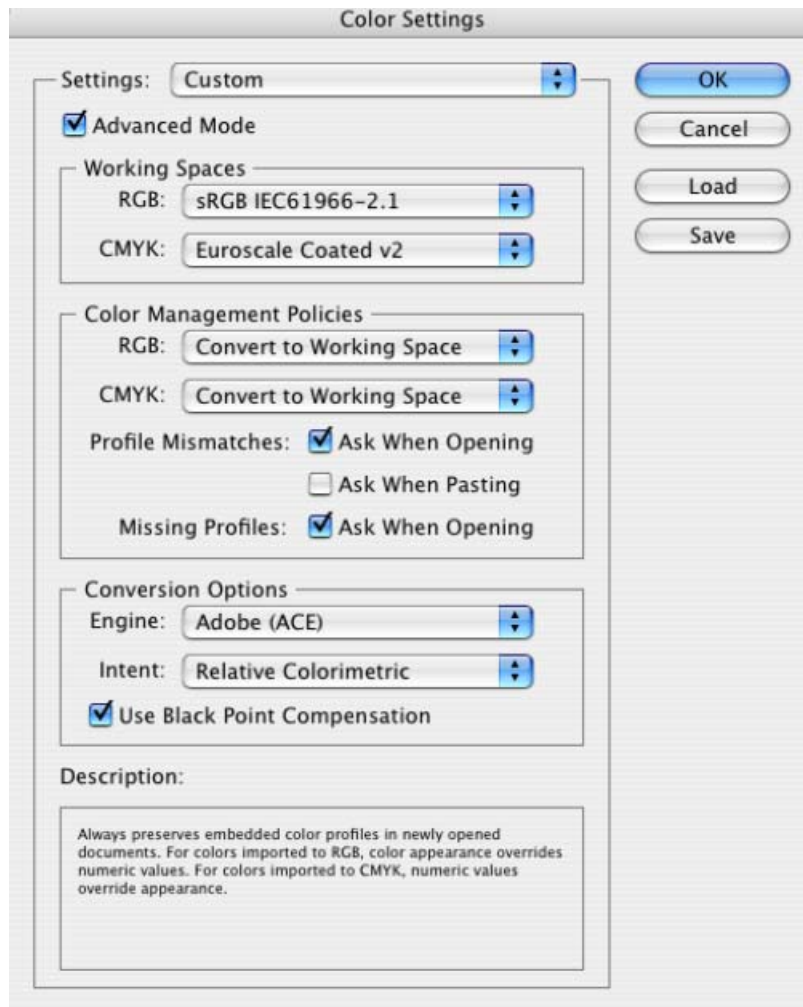
Operating System: Mac OS X

1. First recommendations:
 - See the [Media type functionality & features](#) and choose the most appropriate media.
 - It is essential to have the media type correctly calibrated with the printer and print mode, consult the [Calibrate my printer](#) section.
 - In order to get a correct display, it's also essential to have the monitor profiled, consult the [Profile my monitor](#) section.
2. Open the EFI Designer Edition RIP.
3. EFI Designer Edition RIP settings, **Preferences**:
 - **Color**:
 - Check the **Active Color Management** checkbox.
 - **Paper name**: Select the paper type that is loaded on the printer (always calibrated) and "Best" print quality.
 - **Print resolution**: 600 x 600.
 - **Color output mode**: Photo print.
 - You don't need to worry about the profiles and rendering intent because you will select **PostScript Color Management** option in the application, then, the application tells the RIP which source profile and rendering intent should be used for the conversion to the print space, these are the Document profile and the Print Space Intent of the application. The RIP color settings will be overridden.

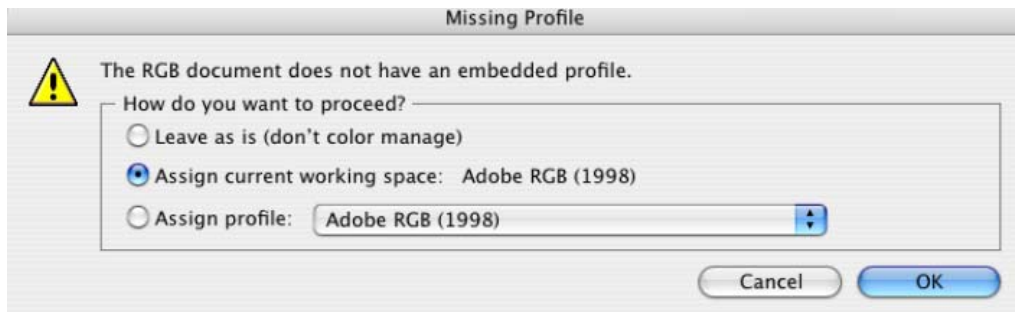
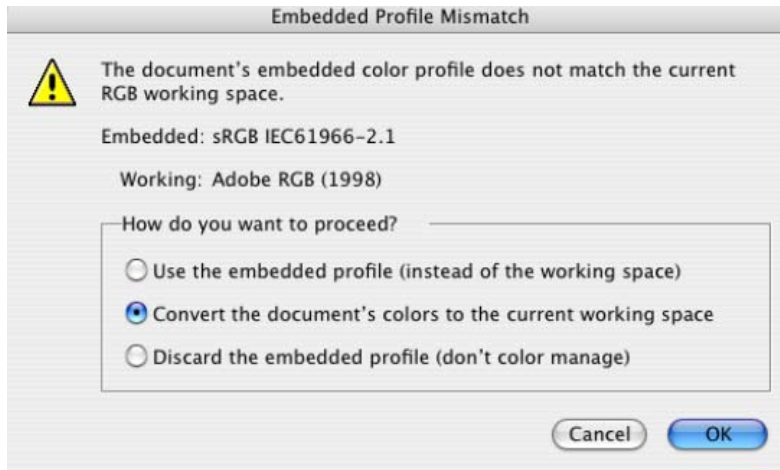


- Click **OK**

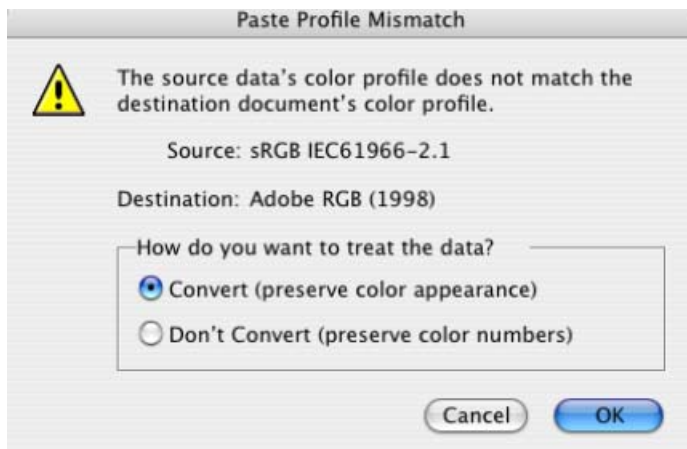
4. Open Adobe Illustrator CS.
5. Configure the **Color Settings, Edit menu > Color Settings...**:
 - Make sure the **Advanced Mode** check box is ticked.
 - **Working Space > RGB**: sRGB IEC61966-2.1.
 - **Working Space > CMYK**: Euroscale Coated v2 (for Europe), U.S. Web Coated (SWOP) v2 (for US) and Japan Standard v2 (for Japan).
 - **Color Management Policies**: Convert to working space.
 - **Profile Mismatches**: check **Ask When Opening** and **Ask When Pasting**.
 - **Missing Profiles**: check **Ask When Opening**.
 - **Conversion Options > Intent**: Perceptual (for RGB images) or Relative Colorimetric (for CMYK images).



- Click **OK**.
6. Open the image, **File menu > Open...**:
 - If the document has an embedded color profile that does not match the current working space, select **Convert document's colors to the current working space**. Otherwise, select **Assign current working space**.

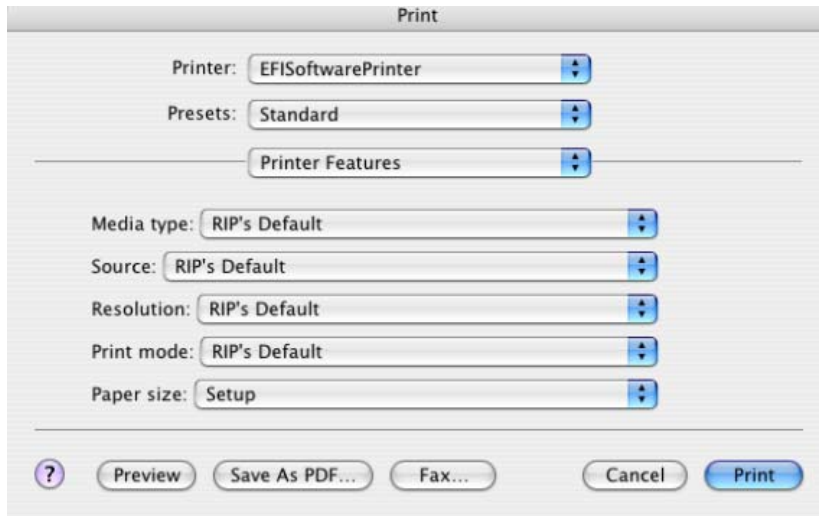


- Click **OK**.
7. If you place an image, you can embed the image in the document. If it has an embedded profile, it will be converted from the embedded color profile to the document color profile preserving the color appearance. If it doesn't have an embedded color profile, Illustrator will assign the document color profile.
- **File menu > Place...:** browse the image and uncheck the **Link** checkbox. If you are asked **How do you want to treat the data?**, select **Convert**.



- Click **OK**.
8. Make sure you have configured the **Document Setup** appropriately for your document, **File menu > Document Setup...**
9. Driver Settings, **File menu > Print...:**
- **Printer:** Select the printer (ex. EFI Designer Edition).
 - **Page Setup...:**

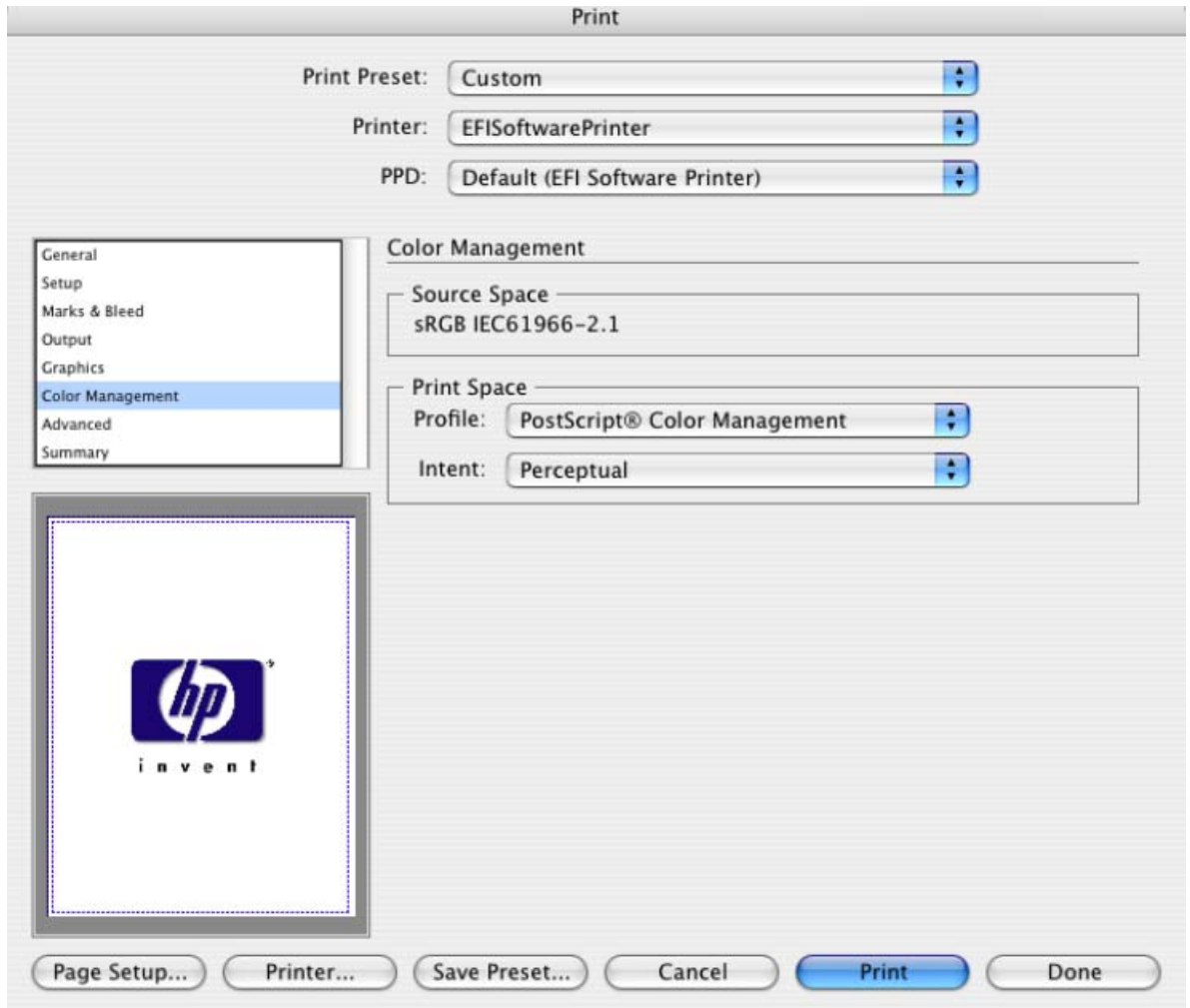
- **Format for:** Select the printer.
- **Paper Size:** Select the paper size of the media loaded on the printer.
- **Orientation:** Select the orientation of your image on the paper.
- Click **OK**.
- **Printer...** button:
 - **Printer Features** (Mac OS X v10.3):
 - **Paper Size:** Setup.
 - Select **RIP's Default** on the others settings.



- Click **Print**.

10. Adobe Illustrator **Print...** settings:

- **General** (left hand menu):
 - **Media > Size:** Defined by Driver.
 - **Options:** Select the scaling option you need.
- **Output** (left hand menu):
 - **Mode:** Composite.
- **Color Management** (left hand menu):
 - **Print Space > Profile:** PostScript Color Management
- **Print Space > Intent:** Perceptual (for RGB images) or Relative Colorimetric (for CMYK images).



- Click **Print**.

For more information on HP Designjet products

www.hp.com/go/designjet

© 2005 Hewlett-Packard Development Company, L.P. The information contained herein is subject to change without notice. The only warranties for HP products and services are set forth in the express warranty statements accompanying such products and services. Nothing herein should be construed as constituting an additional warranty. HP shall not be liable for technical or editorial errors or omissions contained herein.

Adobe Photoshop and PostScript are trademarks of Adobe Systems Incorporated. PANTONE is Pantone, Inc.'s check-standard trademark for color.

Rev. 1.0, 09/2005

