



Printing a “match to screen”

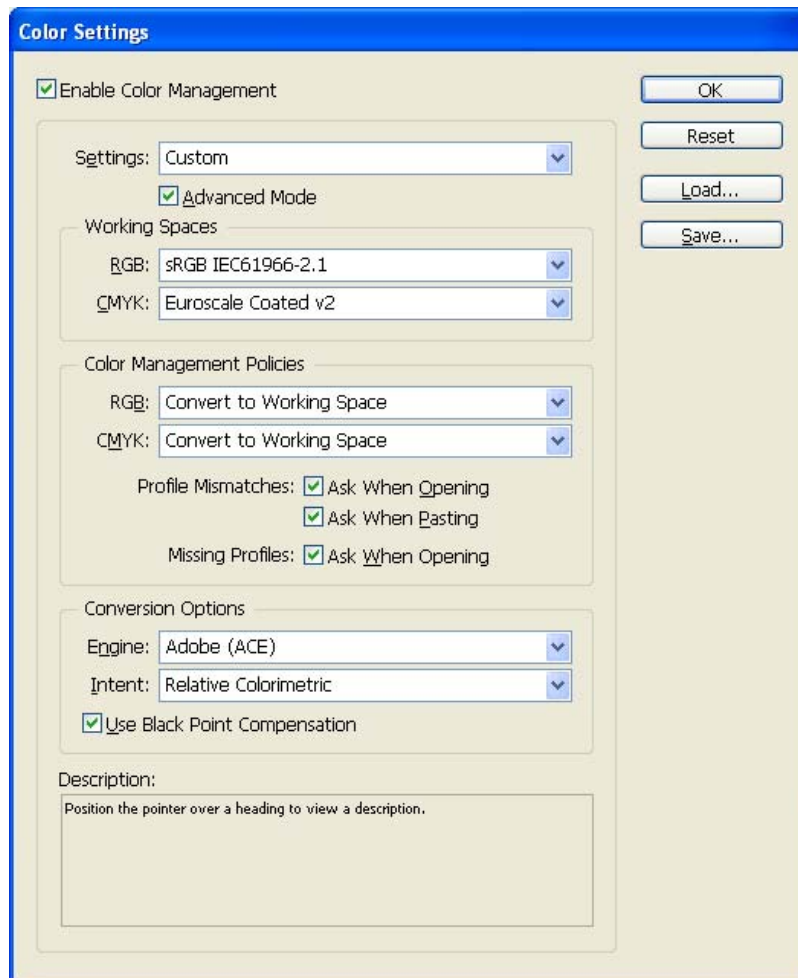
Application: Adobe InDesign CS

Printer: HP Designjet 30/90/130 series

Software: HP Driver

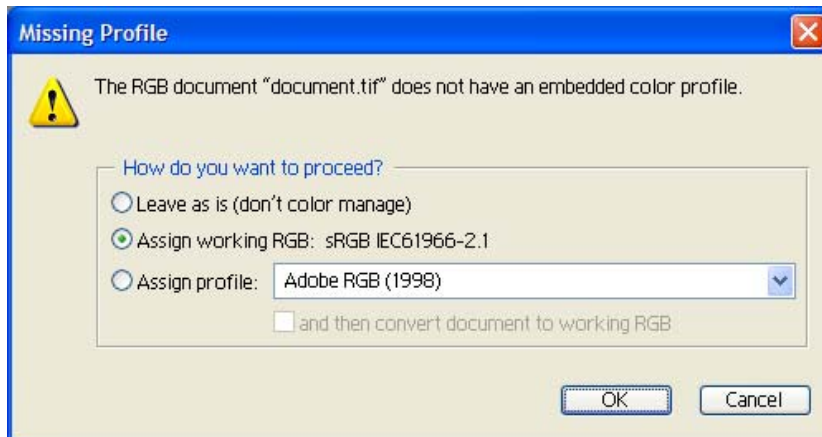
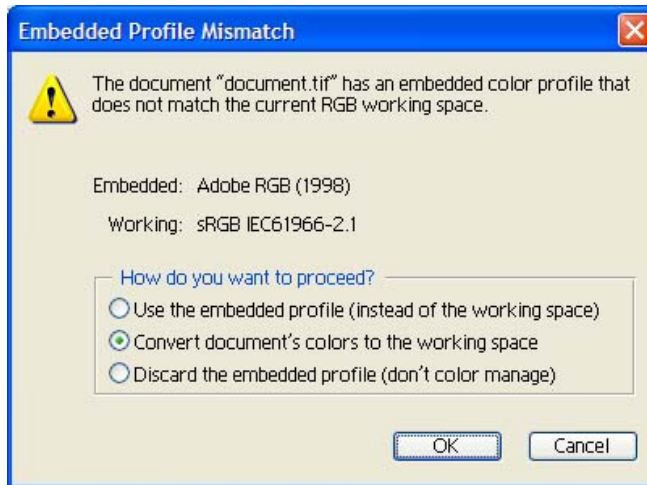
Operating System: Windows

1. First recommendations:
 - See the [Media type functionality & features](#) and choose the most appropriate media.
 - It is essential to have the media type correctly calibrated with the printer and print mode, consult the [Calibrate my printer](#) document.
 - In order to get a correct display, it's also essential to have the monitor profiled, consult the [Profile my monitor](#) section.
2. Open Adobe InDesign CS.
3. Configure the **Color Settings, Edit menu > Color Settings...:**
 - Check the **Enable Color Management** checkbox.
 - Make sure the **Advanced Mode** check box is ticked.
 - **Working Space > RGB:** sRGB IEC61966-2.1.
 - **Working Space > CMYK:** Euroscale Coated v2 (for Europe), U.S. Web Coated (SWOP) v2 (for US) and Japan Standard v2 (for Japan).
 - **Color Management Policies:** Convert to working space.
 - **Profile Mismatches:** check **Ask When Opening** and **Ask When Pasting**.
 - **Missing Profiles:** check **Ask When Opening**.
 - **Conversion Options > Intent:** Relative Colorimetric.

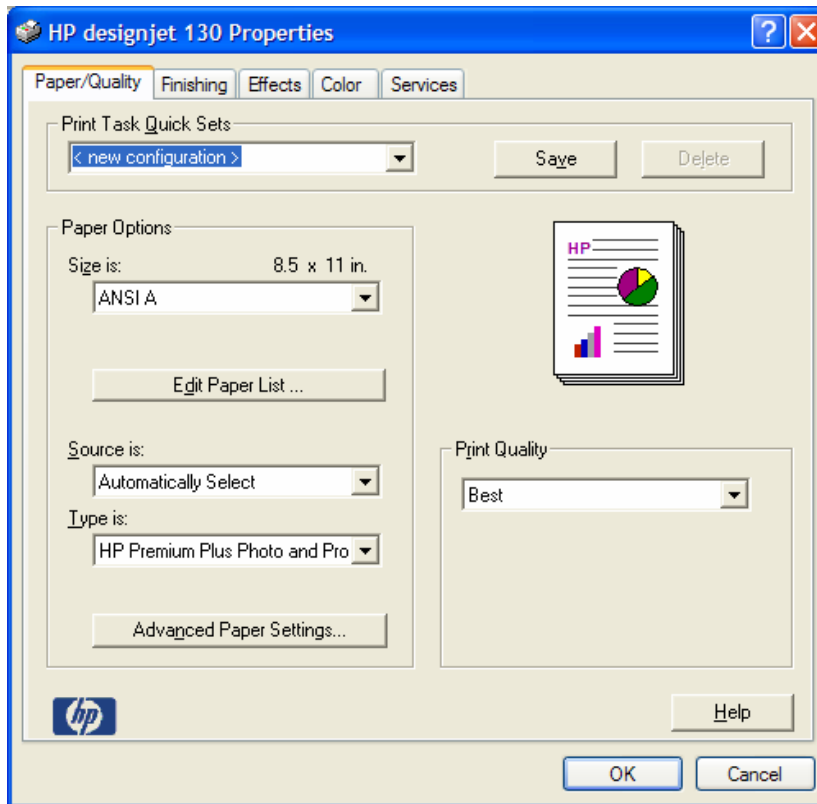


- Click **OK**.

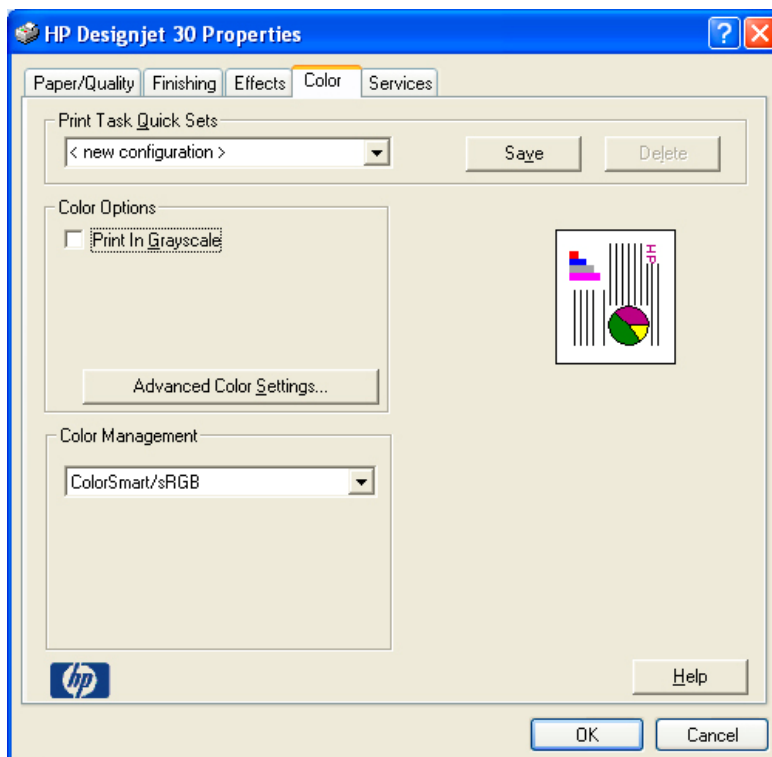
4. Open the image, **File menu > Open...**:
 - If the document has an embedded color profile that does not match the current working space, select **Convert document's colors to the current working space**. Otherwise, select **Assign current working space**.



- Click **OK**.
5. Place the images if needed, **File menu > Place...**, browse the image and click **Open...**
 6. So that you get a good display and a good output for the placed images select a High Quality Display, **View menu > Display Performance > High Quality Display**.
 7. Make sure you have configured the **Document Setup** appropriately for your document, **File menu > Document Setup...**
 8. Driver Settings, **File menu > Print... > Setup...** button:
 - **Select Printer...**: Select the printer (ex. HP Designjet 130).
 - **Preferences:**
 - **Paper/Quality** tab:
 - **Type is:** Select the media type that is loaded on the printer.
 - **Print Quality:** Best.



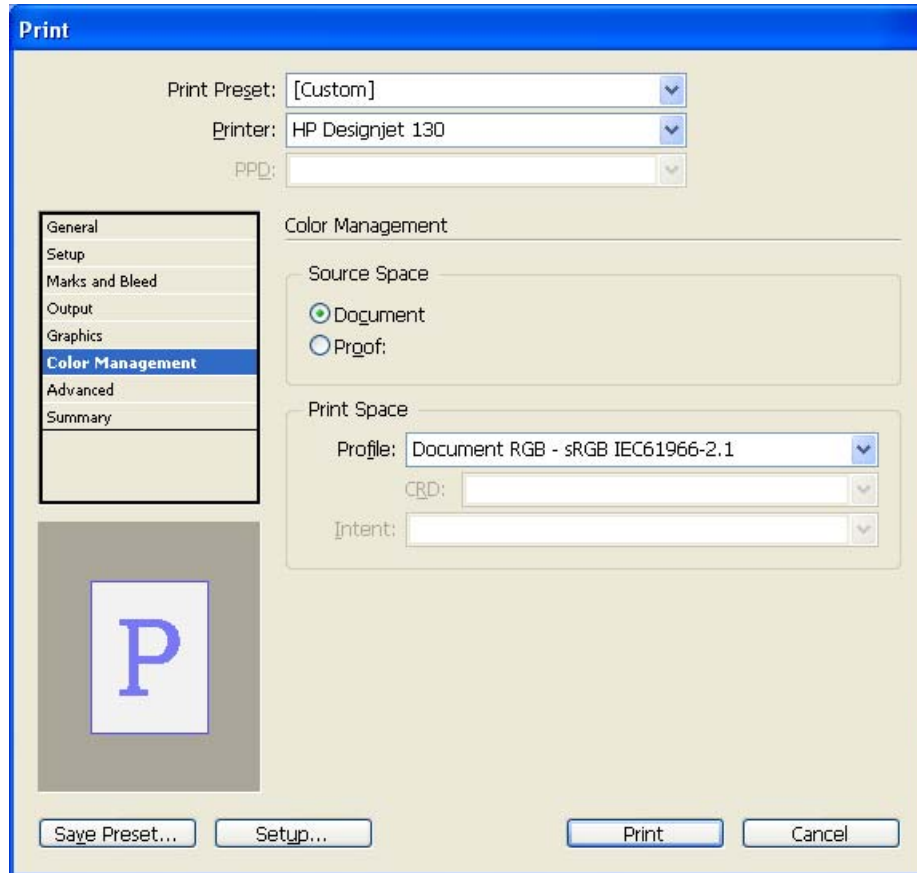
- **Finishing** tab:
 - **Orientation:** Select the orientation of your document on the paper.
- **Color** tab:
 - **Color Management:** ColorSmart/sRGB.



- Click **OK** until the InDesign **Print** dialog box.

9. Adobe InDesign **Print...** settings:

- **Setup** (left hand menu):
 - **Paper Size:** Defined by Driver.
 - **Options:** Select the scaling option you need.
- **Output** (left hand menu):
 - **Color:** Composite RGB.
- **Color Management** (left hand menu):
 - **Source Space:** Document.
 - **Print Space > Profile:** sRGB IEC61966-2.1.



- Click **Print**.

For more information on HP Designjet products

www.hp.com/go/designjet

© 2005 Hewlett-Packard Development Company, L.P. The information contained herein is subject to change without notice. The only warranties for HP products and services are set forth in the express warranty statements accompanying such products and services. Nothing herein should be construed as constituting an additional warranty. HP shall not be liable for technical or editorial errors or omissions contained herein.

Adobe Photoshop and PostScript are trademarks of Adobe Systems Incorporated. PANTONE is Pantone, Inc.'s check-standard trademark for color.

Rev. 1.0, 09/2005

