



Printing a “match to screen”

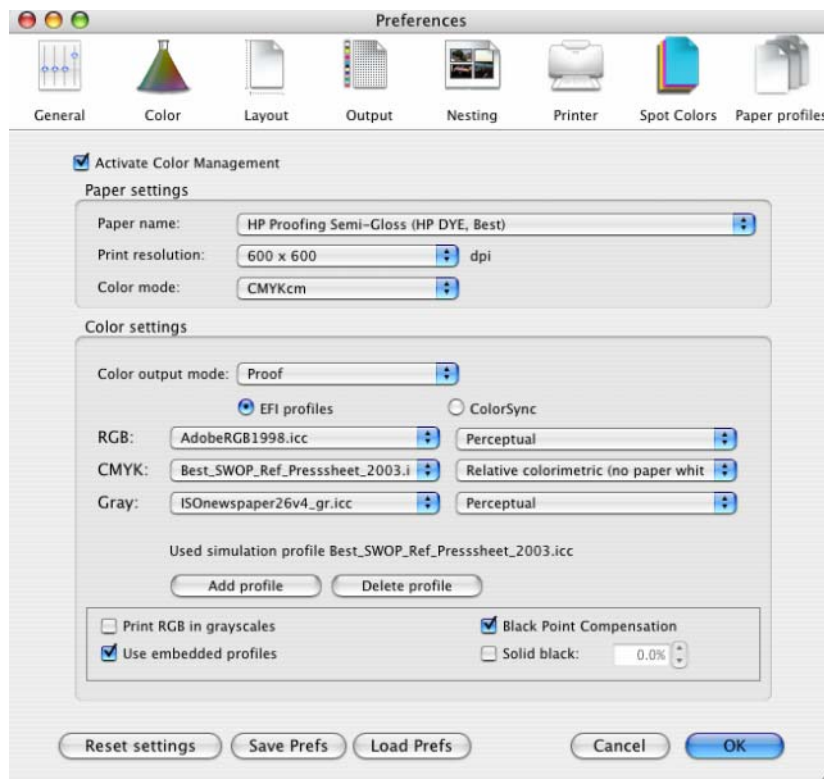
Application: Adobe InDesign CS

Printer: HP Designjet 30/90/130 series

Software: EFI Designer Edition for HP

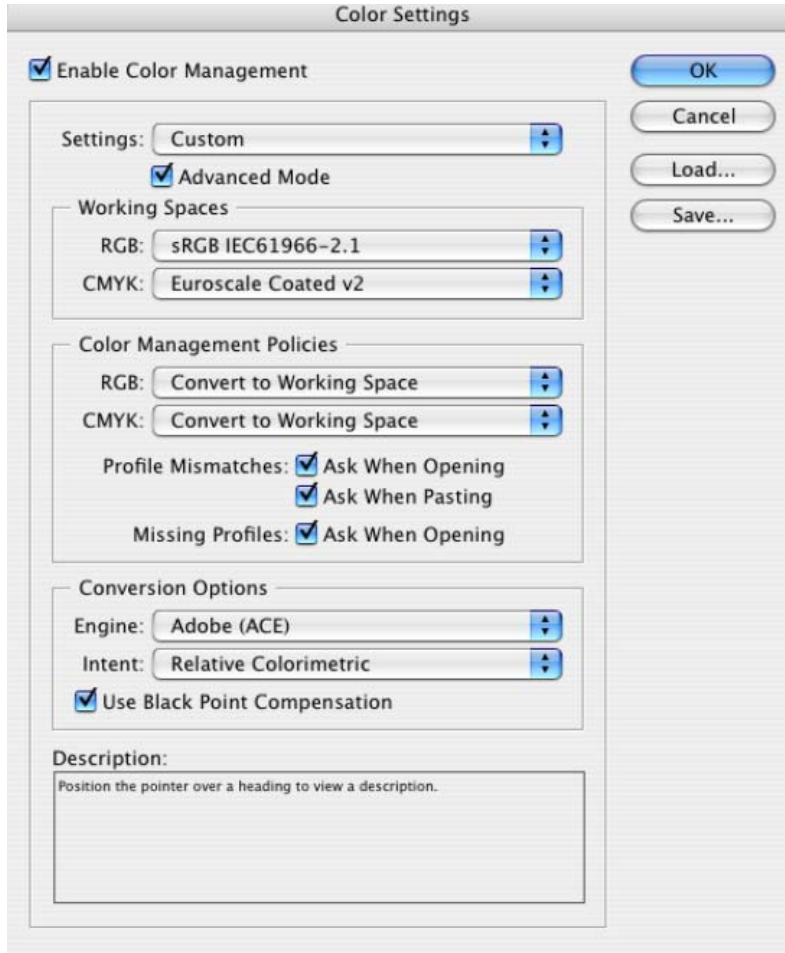
Operating System: Mac OS X

1. First recommendations:
 - See the [Media type functionality & features](#) and choose the most appropriate media.
 - It is essential to have the media type correctly calibrated with the printer and print mode, consult the [Calibrate my printer](#) document.
 - In order to get a correct display, it's also essential to have the monitor profiled, consult the [Profile my monitor](#) document.
2. Open the EFI Designer Edition RIP.
3. EFI Designer Edition RIP settings, **Preferences**:
 - **Color**:
 - Check the **Active Color Management** checkbox.
 - **Paper name**: Select the paper type that is loaded on the printer (always calibrated) and "Best" print quality.
 - **Print resolution**: 600 x 600.
 - **Color output mode**: Proof.
 - **CMYK**: Euroscale Coated v2 (for Europe), U.S. Web Coated (SWOP) v2 (for US) and Japan Standard v2 (for Japan) and Relative colorimetric intent.

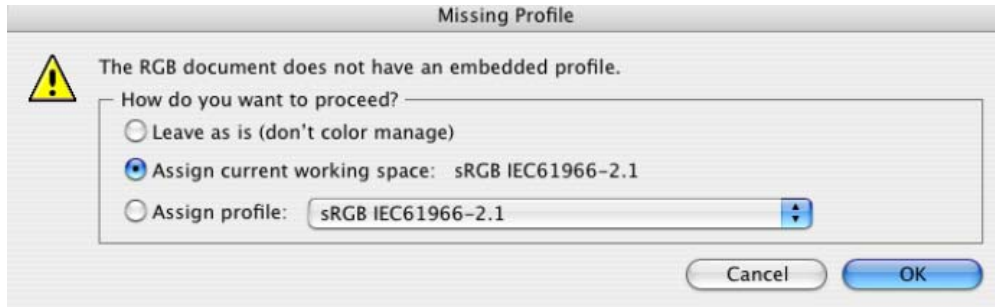
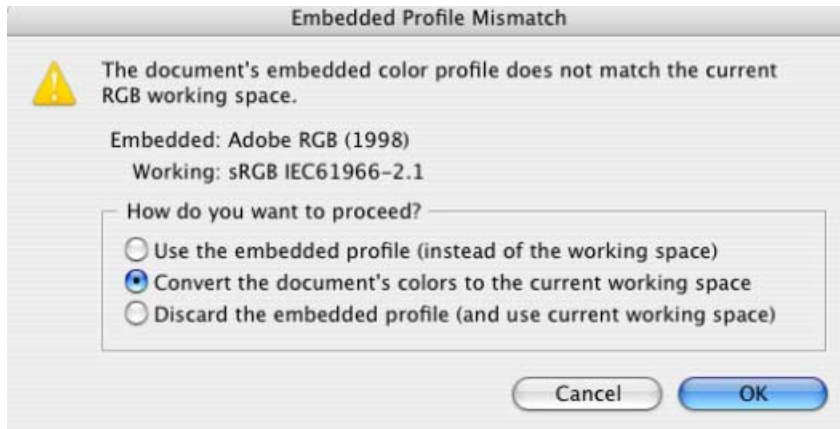


- Click **OK**
4. Open Adobe InDesign CS.
 5. Configure the **Color Settings, Edit menu > Color Settings...**:
 - Check the **Enable Color Management** checkbox.
 - Make sure the **Advanced Mode** check box is ticked.
 - **Working Space > RGB**: sRGB IEC61966-2.1.

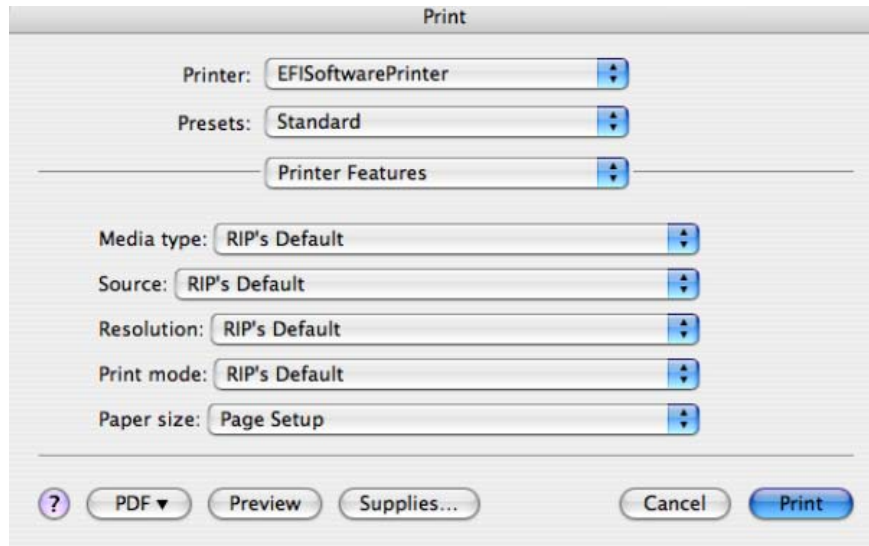
- **Working Space > CMYK:** Select the same CMYK profile selected in EFI Designer Edition RIP.
- **Color Management Policies:** Convert to working space.
- **Profile Mismatches:** check **Ask When Opening** and **Ask When Pasting**.
- **Missing Profiles:** check **Ask When Opening**.
- **Conversion Options > Intent:** Relative Colorimetric.



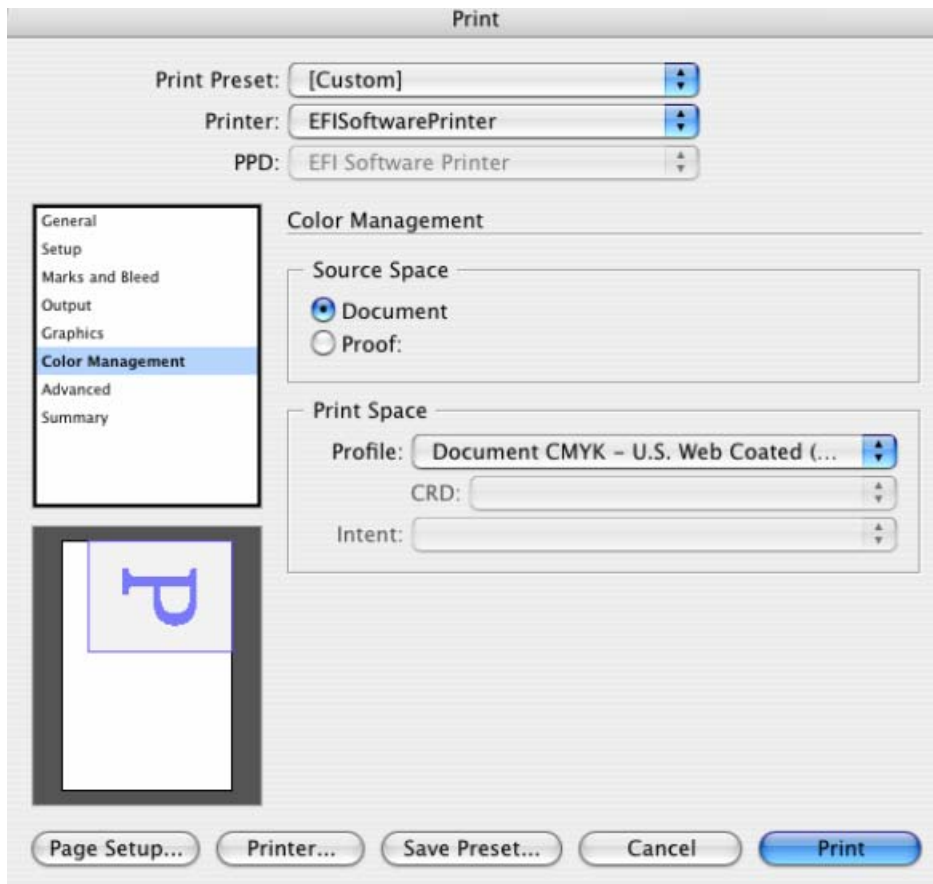
- Click **OK**.
6. Open the image, **File menu > Open...**:
- If the document has an embedded color profile that does not match the current working space, select **Convert document's colors to the current working space**. Otherwise, select **Assign current working space**.



- Click **OK**.
- 5. Place the images if needed, **File menu > Place...**, browse the image and click **Open...**
- 6. So that you get a good display select a High Quality Display, **View menu > Display performance > High Quality Display**.
- 7. Make sure you have configured the **Document Setup** appropriately for your document, **File menu > Document Setup...**
- 8. Printer settings, **File menu > Print...** :
 - **Printer...**: Select the printer (ex. EFI SoftwarePrinter).
 - **Page Setup...** button:
 - **Format for:** Select the printer.
 - **Paper Size:** Select the paper size of the media loaded on the printer.
 - **Orientation:** Select the orientation of your image on the paper.
 - Click **OK**.
 - **Printer...** button:
 - **Printer Features** (Mac OS X v10.3):
 - **Paper Size:** Page Setup.
 - Select **RIP's Default** on the others settings.



- Click **Print**.
9. Adobe InDesign **Print...** settings:
- **Setup** (left hand menu):
 - **Paper Size:** Defined by Driver.
 - **Options:** Select the scaling option you need.
 - **Output** (left hand menu):
 - **Color:** Composite CMYK.
 - **Color Management** (left hand menu):
 - **Source Space:** Document.
 - **Print Space > Profile:** Select the Document CMYK profile.



- Click **Print**.

For more information on HP Designjet products

www.hp.com/go/designjet

© 2005 Hewlett-Packard Development Company, L.P. The information contained herein is subject to change without notice. The only warranties for HP products and services are set forth in the express warranty statements accompanying such products and services. Nothing herein should be construed as constituting an additional warranty. HP shall not be liable for technical or editorial errors or omissions contained herein.

Adobe Photoshop and PostScript are trademarks of Adobe Systems Incorporated. PANTONE is Pantone, Inc.'s check-standard trademark for color.

Rev. 1.0, 09/2005

