



Printing a “match to screen”

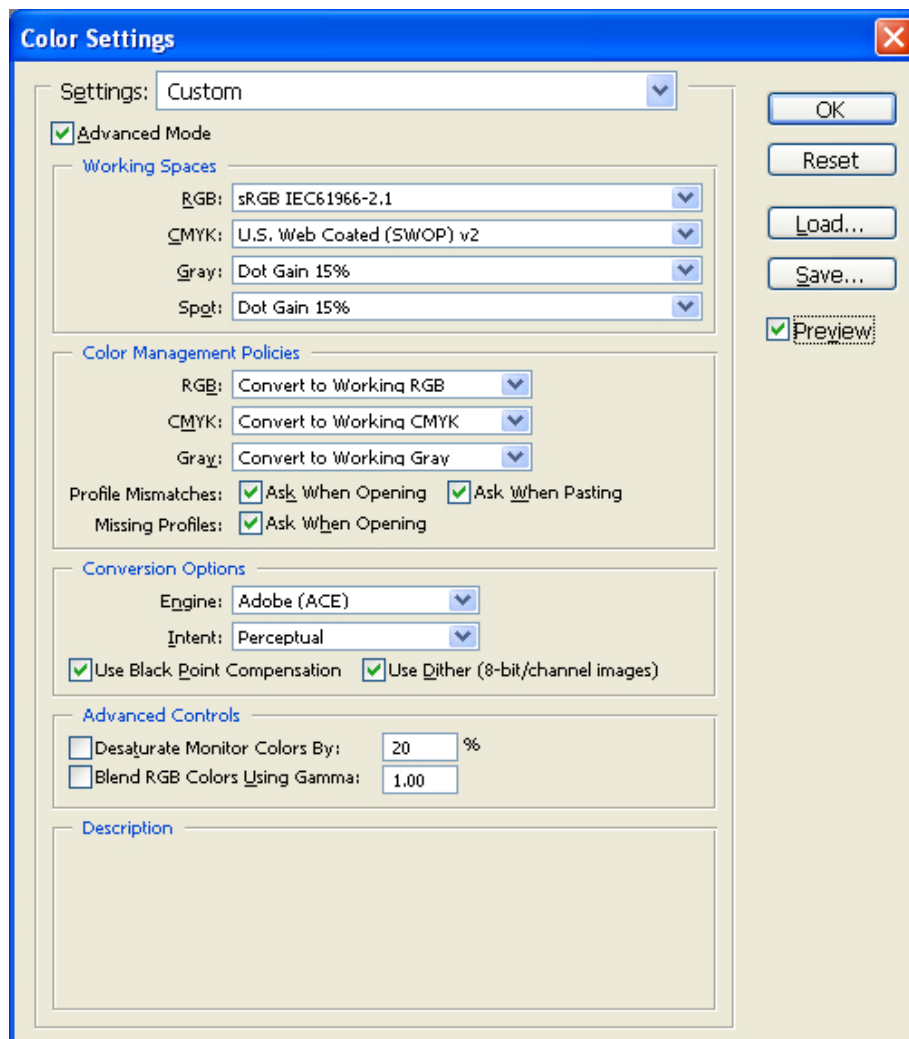
Application: Adobe Photoshop CS

Printer: HP Designjet 30/90/130 series

Software: HP Driver

Operating System: Windows

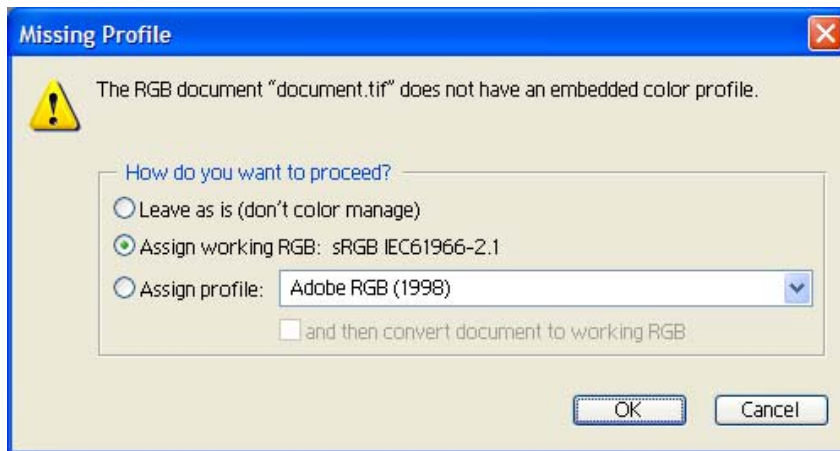
1. First recommendations:
 - See the [Media type functionality & features](#) and choose the most appropriate media.
 - It is essential to have the media type correctly calibrated with the printer and print mode, consult the [Calibrate my printer](#) document.
 - In order to get a correct display, it's also essential to have the monitor calibrated, consult the [Profile my monitor](#) section.
2. Open Adobe Photoshop CS.
3. Configure the **Color Settings, Edit menu > Color Settings...**:
 - Make sure the **Advanced Mode** check box is ticked.
 - **Working Space > RGB**: sRGB IEC61966-2.1.
 - **Working Space > CMYK**: Euroscale Coated v2 (for Europe), U.S. Web Coated (SWOP) v2 (for US) and Japan Standard v2 (for Japan).
 - **Color Management Policies**: Convert to working space.
 - **Profile Mismatches**: check **Ask When Opening** and **Ask When Pasting**.
 - **Missing Profiles**: check **Ask When Opening**.
 - **Conversion Options > Intent**: Perceptual.



- Click **OK**.

4. Open the image, **File menu > Open...**:

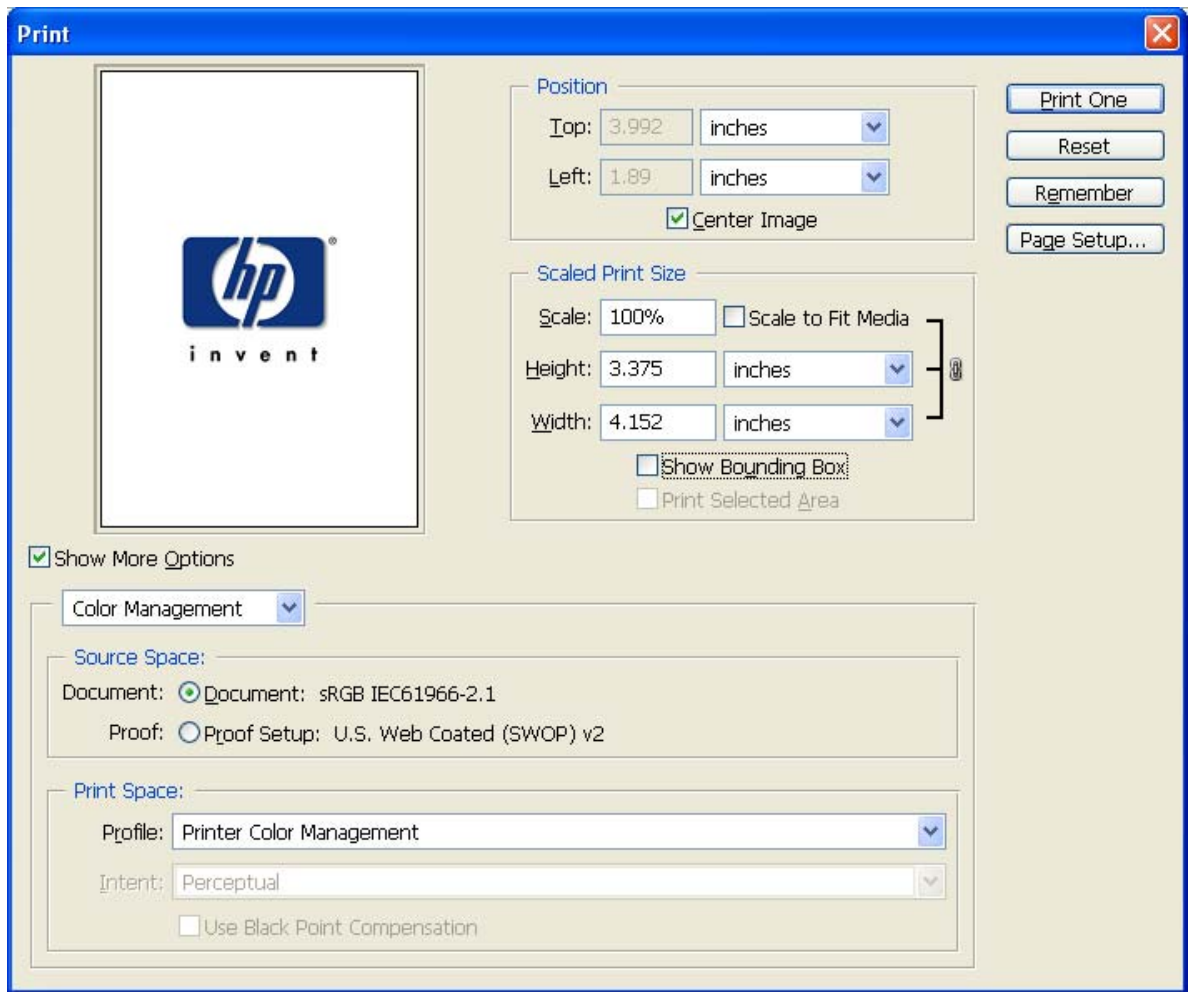
- If the document has an embedded color profile that does not match the current working space, select **Convert document's colors to the working space**. Otherwise, select **Assign working space**.



- Click **OK**.

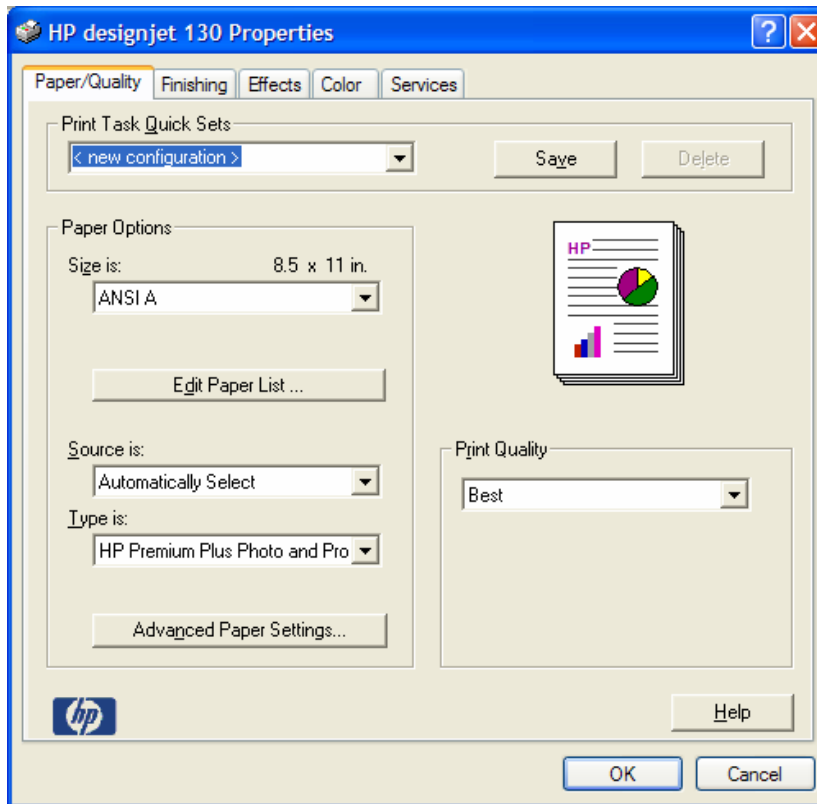
5. Adobe Photoshop **Print with Preview...** settings. **File menu > Print with Preview...**:

- **Page Setup:**
 - **Printer...**: Select the printer (ex. HP Designjet 130) and click **OK**.
 - **Paper Size**: Select the paper size of the media loaded on the printer.
 - **Orientation**: Select the orientation of your image on the paper.
 - Click **OK**.
- Set the **Position** and the **Scaled Print Size** you need.
- Check **Show More Options**.
- Select the **Color Management** tab:
 - **Source Space**: Document.
 - **Print Space > Profile**: Printer Color Management.

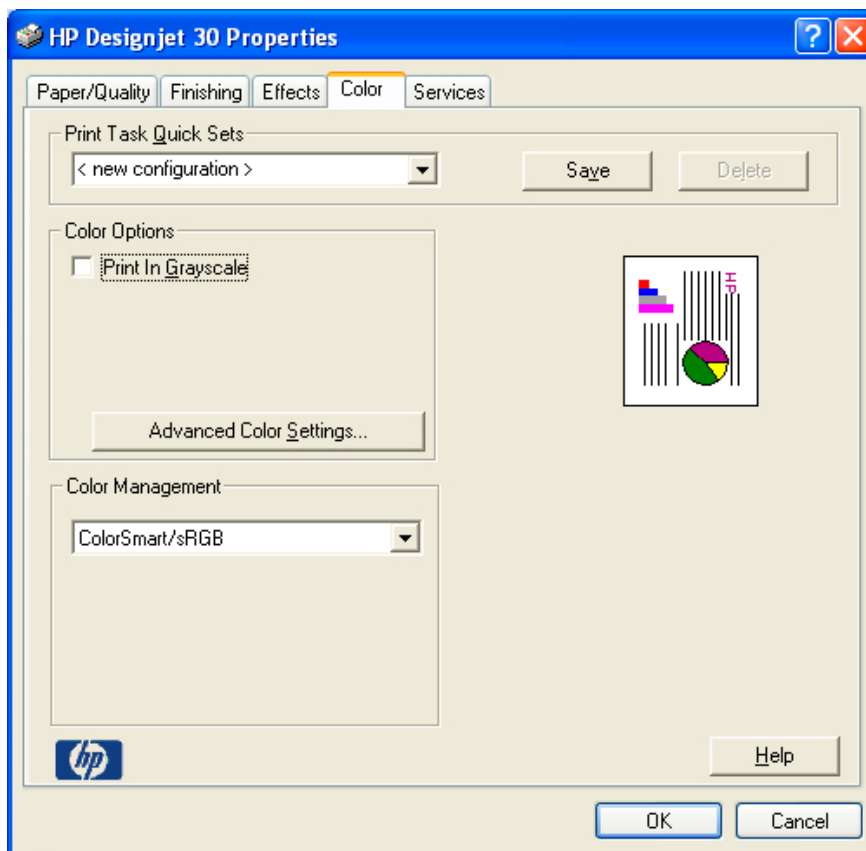


6. Driver Settings, **Print... > Properties:**

- **Paper/Quality** tab:
 - **Type is:** Select the media type that is loaded on the printer.
 - **Print Quality:** Best.



- **Color** tab:
 - **Color Management:** ColorSmart/sRGB.



- Click **OK** twice.

For more information on HP Designjet products

www.hp.com/go/designjet

© 2005 Hewlett-Packard Development Company, L.P. The information contained herein is subject to change without notice. The only warranties for HP products and services are set forth in the express warranty statements accompanying such products and services. Nothing herein should be construed as constituting an additional warranty. HP shall not be liable for technical or editorial errors or omissions contained herein.

Adobe Photoshop and PostScript are trademarks of Adobe Systems Incorporated. PANTONE is Pantone, Inc.'s check-standard trademark for color.

Rev. 1.0, 09/2005

