



Printing a photo

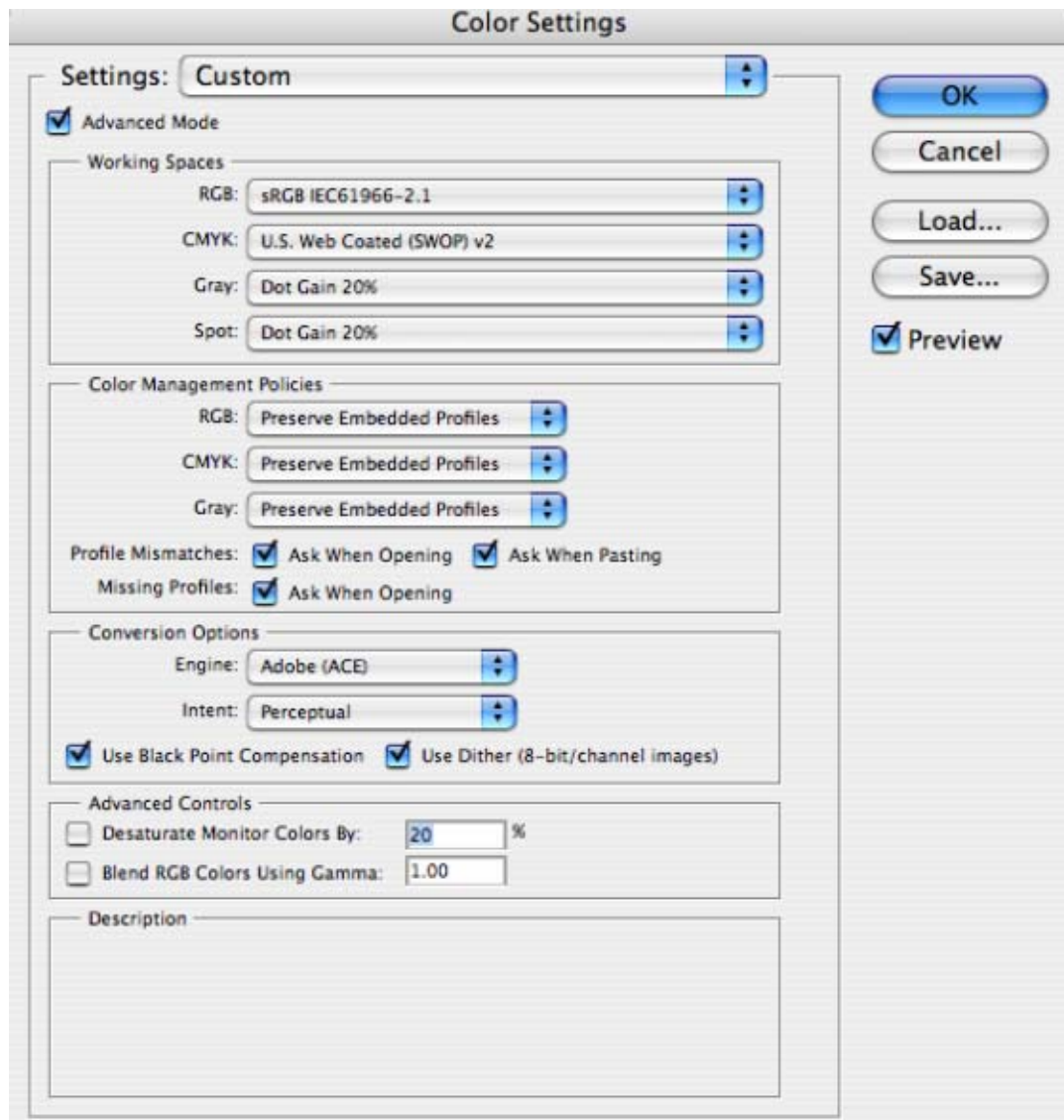
Application: Adobe Photoshop CS

Printer: HP Designjet 30/90/130 series

Software: HP Driver

Operating System: Mac OS X

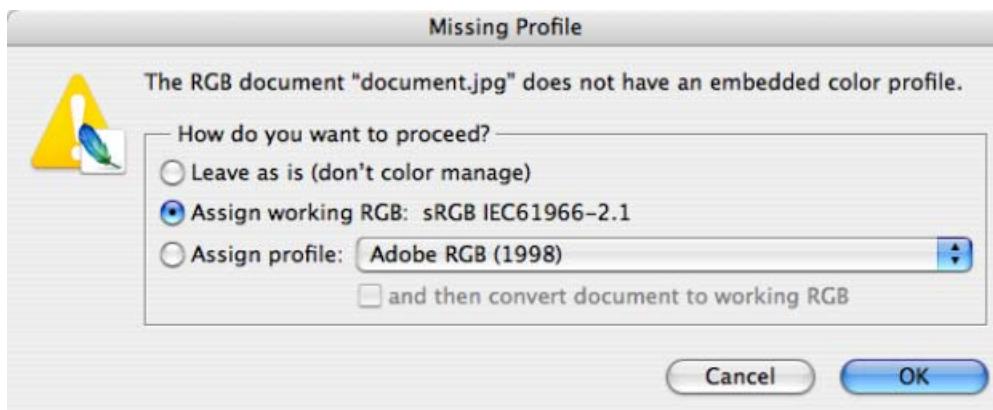
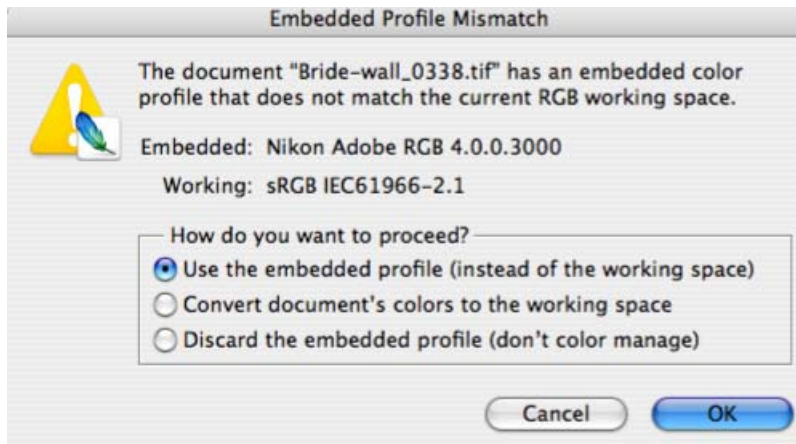
1. First recommendations:
 - See the [Media type functionality & features](#) and choose the most appropriate media.
 - It is essential to have the media type correctly calibrated with the printer and print mode, consult the [Calibrate my printer](#) document.
2. Open Adobe Photoshop CS.
3. Configure the **Color Settings, Photoshop menu > Color Settings...**:
 - Make sure the **Advanced Mode** check box is ticked.
 - **Working Space > RGB**: select profile of the scanner or camera you have used to get the photo (source profile), if you don't have it, select sRGB IEC61966-2.1 (1998).
 - **Color Management Policies**: Preserve the Embedded Profiles.
 - **Profile Mismatches**: check **Ask When Opening** and **Ask When Pasting**.
 - **Missing Profiles**: check **Ask When Opening**.
 - **Conversion Options > Intent**: Perceptual.



- Click **OK**

4. Open the image, **File menu > Open...**:

- If the document has an embedded color profile that does not match the current working space, select **Use the embedded profile**. Otherwise, select **Assign working space**.

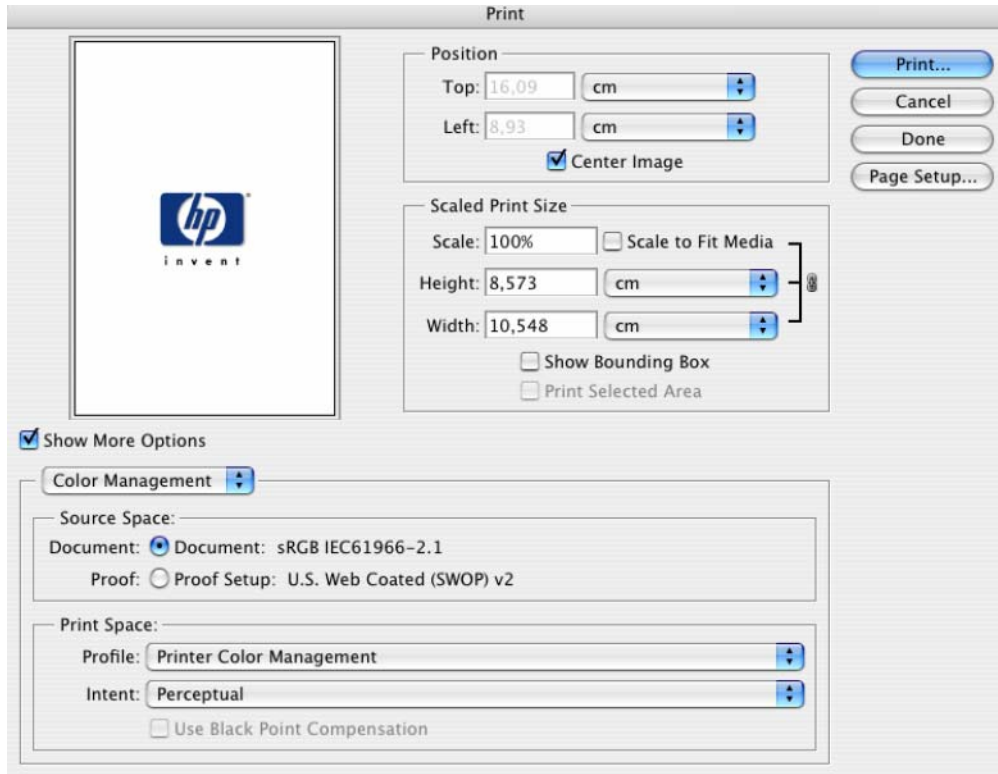


- Click **OK**

5. Adobe Photoshop **Print with Preview...** settings, **File menu > Print with Preview...**:

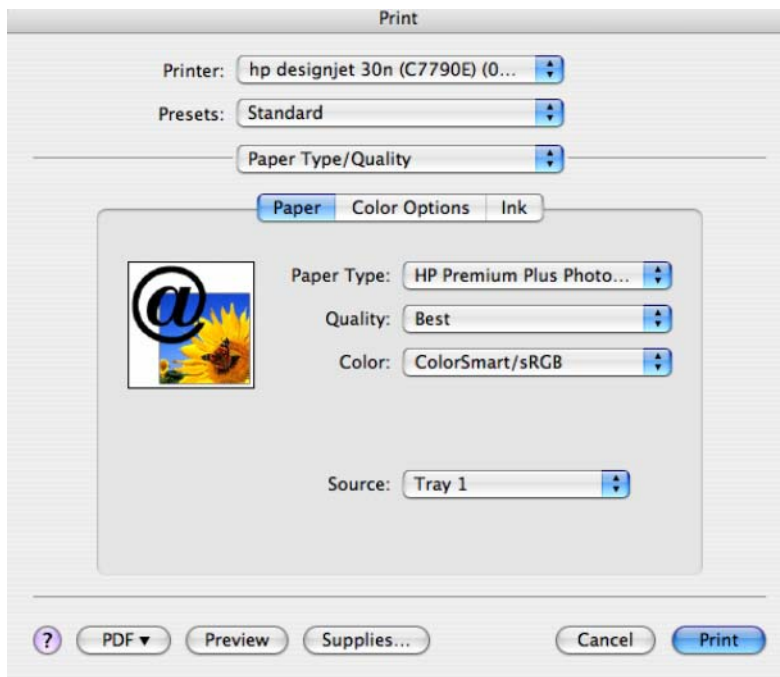
• **Page Setup...**:

- **Format for:** Select the printer (ex. hp designjet 130).
- **Paper Size:** Select the paper size of the media loaded on the printer.
- **Orientation:** Select the orientation of your image on the paper.
- Click **OK**.
- Set the **Position** and the **Scaled Print Size** you need.
- Check **Show More Options**.
- Select the **Color Management** tab:
 - **Source Space:** Document.
 - **Print Space > Profile:** Printer Color Management.
 - **Print Space > Intent:** Perceptual.



6. Driver Settings; **Print...**:

- **Printer:** Select the printer (ex. HP Designjet 130).
- **Paper Type/Quality > Paper tab:**
 - **Paper Type:** Select the media type that is loaded on the printer.
 - **Quality:** Best.
 - **Color:** ColorSmart/sRGB.



- Click **Print**.

You should consider that each person has their own perception and their own subjective opinion about the result; this is because there are various factors that can influence our opinions, such as the type of photo (portrait, landscape...), the source color space, the media used, the environmental conditions, the subjective perception about your own photo, etc.... This means the printing suggestion may not completely match with your own personal opinion. We recommend that you consider the next printing workflow and then choose the one that you prefer: [Printing a Photo \(Alternative Workflow\)](#).

For more information on HP Designjet products

www.hp.com/go/designjet

© 2005 Hewlett-Packard Development Company, L.P. The information contained herein is subject to change without notice. The only warranties for HP products and services are set forth in the express warranty statements accompanying such products and services. Nothing herein should be construed as constituting an additional warranty. HP shall not be liable for technical or editorial errors or omissions contained herein.

Adobe Photoshop and PostScript are trademarks of Adobe Systems Incorporated. PANTONE is Pantone, Inc.'s check-standard trademark for color.

Rev. 1.0, 09/2005

