



## Printing a photo

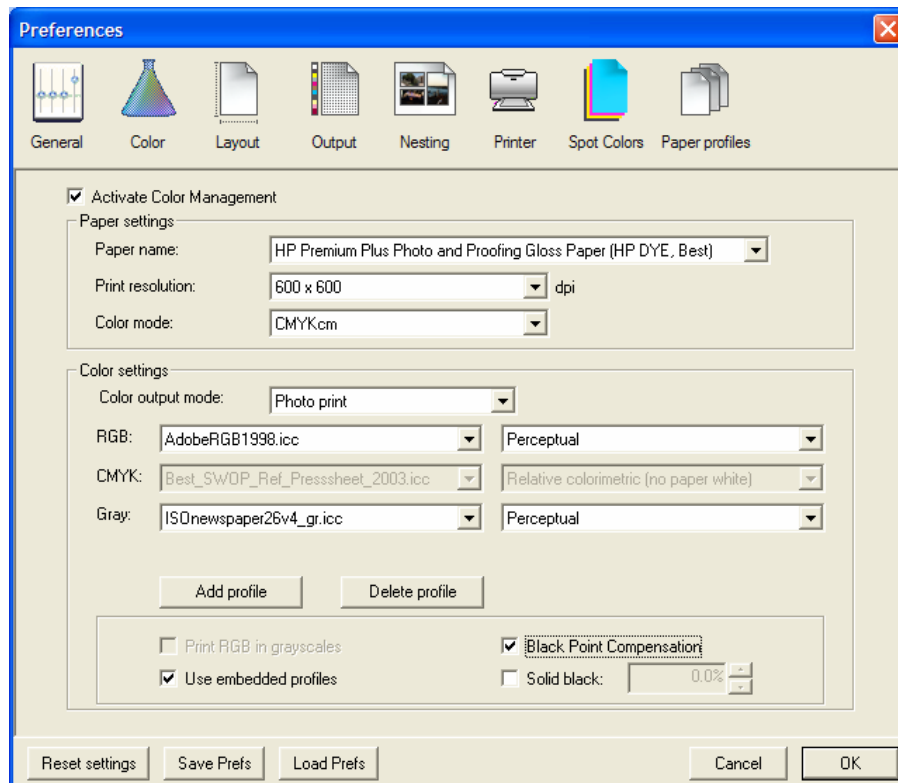
Application: Adobe Photoshop CS

Printer: HP Designjet 30/90/130 series

Software: EFI Designer Edition for HP

Operating System: Windows

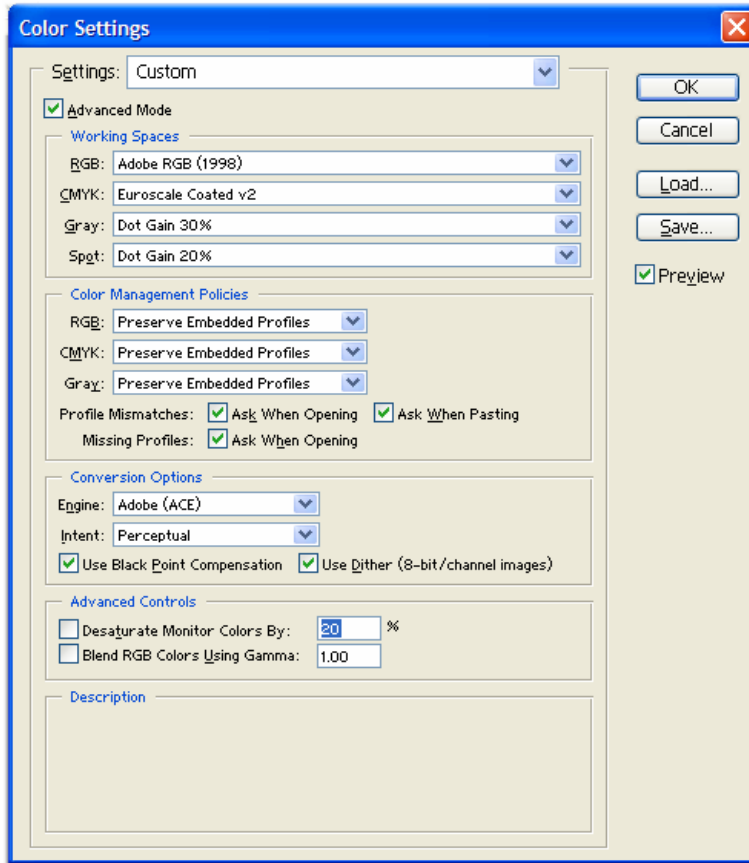
1. First recommendations:
  - See the [Media type functionality & features](#) and choose the most appropriate media.
  - It is essential to have the media type correctly calibrated with the printer and print mode, consult the [Calibrate my printer](#) document.
2. Open the EFI Designer Edition RIP.
3. EFI Designer Edition RIP settings, **Preferences**:
  - **Color**:
    - Check the **Active Color Management** checkbox.
    - **Paper name**: Select the paper type that is loaded on the printer (always calibrated) and “Best” print quality.
    - **Print resolution**: 600 x 600.
    - **Color output mode**: Photo print.
    - You don’t need to worry about the profiles and rendering intent because you will select **Printer Color Management** option in the application, then, the application tells the RIP which source profile and rendering intent should be used for the conversion to the print space, these are the Document profile and the Print Space Intent of the application. The RIP color settings will be overridden.



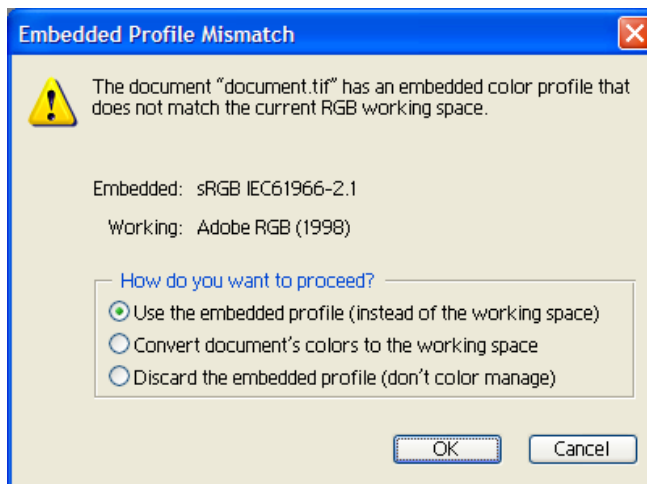
- **OK**

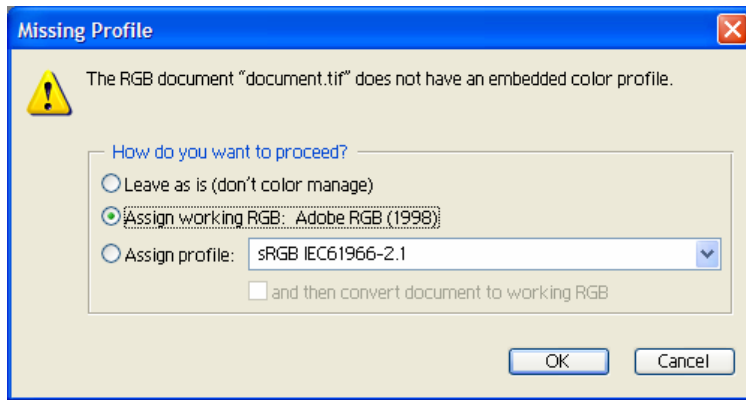
4. Open Adobe Photoshop CS.
5. Configure the **Color Settings, Edit menu > Color Settings...**:
  - Make sure the **Advanced Mode** check box is ticked.
  - **Working Space > RGB**: select the profile of the scanner or camera you have used to get the photo (source profile), if you don’t have it, select Adobe RGB (1998).

- **Color Management Policies:** Preserve the Embedded Profiles.
- **Profile Mismatches:** check **Ask When Opening** and **Ask When Pasting**.
- **Missing Profiles:** check **Ask When Opening**.
- **Conversion Options > Intent:** Perceptual.



- Click **OK**
6. Open the image, **File menu > Open...**:
- If the document has an embedded color profile that does not match the current working space, select **Use the embedded profile**. Otherwise, select **Assign working space**.

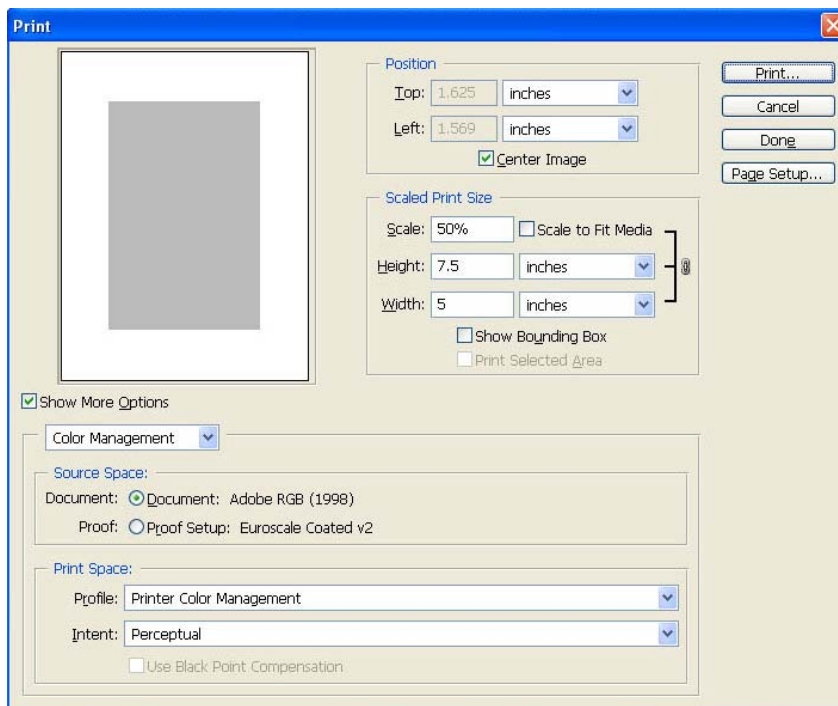




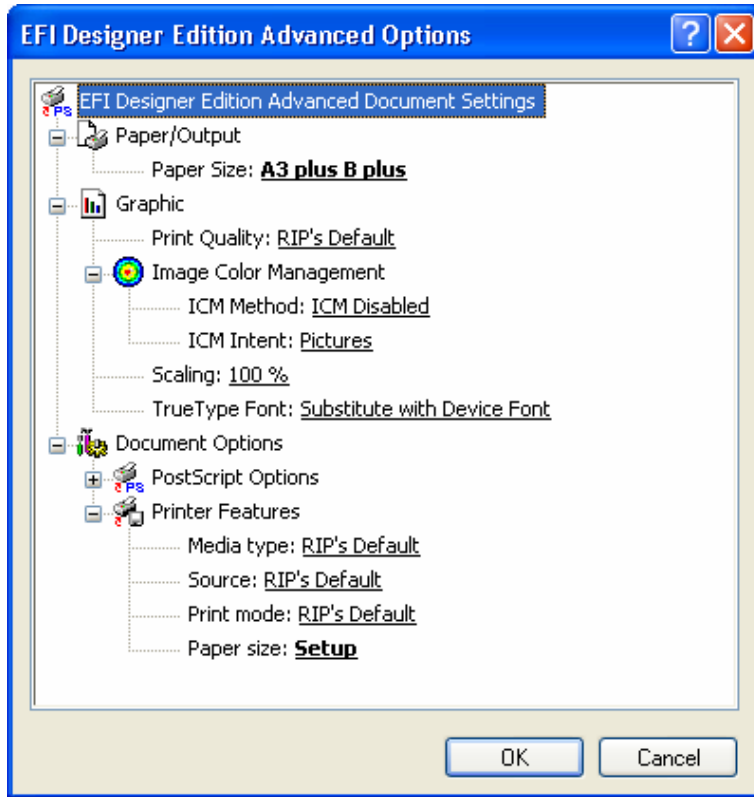
- Click **OK**

7. Adobe Photoshop **Print with Preview...** settings, **File menu > Print with Preview...**:

- **Page Setup:**
  - **Printer...**: Select the printer (ex. EFI Designer Edition).
  - Click **OK**.
  - **Paper Size**: Select the paper size of the media loaded on the printer.
  - **Orientation**: Select the orientation of your image on the paper.
  - Click **OK**.
- Set the **Position** and the **Scaled Print Size** you need.
- Check **Show More Options**.
- Select the **Color Management** tab:
  - **Source Space**: Document.
  - **Print Space > Profile**: Printer Color Management.
  - **Print Space > Intent**: Perceptual.



8. Print, **Print... > Properties > Advanced...**
  - **Document Options > Printer Features:**
    - **Paper Size:** Setup
    - Select **RIP's Default** on the others settings.



- Click **OK**, until print.

For more information on HP Designjet products

[www.hp.com/go/designjet](http://www.hp.com/go/designjet)

© 2005 Hewlett-Packard Development Company, L.P. The information contained herein is subject to change without notice. The only warranties for HP products and services are set forth in the express warranty statements accompanying such products and services. Nothing herein should be construed as constituting an additional warranty. HP shall not be liable for technical or editorial errors or omissions contained herein.

Adobe Photoshop and PostScript are trademarks of Adobe Systems Incorporated. PANTONE is Pantone, Inc.'s check-standard trademark for color.

Rev. 1.0, 09/2005

