



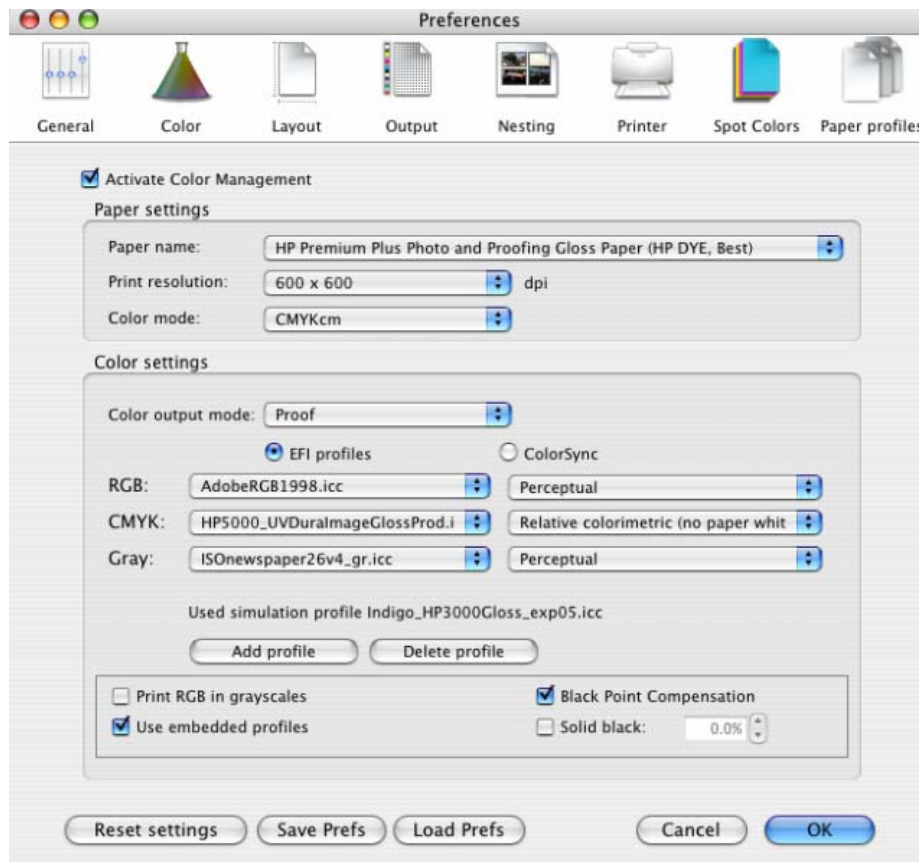
Proof another printer

Printer: HP Designjet 30/90/130 series

Software: EFI Designer Edition for HP

Operating System: Mac OS X

1. First recommendations:
 - See the [Media type functionality & features](#) and choose the most appropriate media.
 - It is essential to have the media type correctly calibrated with the printer and print mode, consult the [Calibrate my printer](#) document.
2. Open the EFI Designer Edition RIP.
3. EFI Designer Edition RIP settings, **Preferences**:
 - **Color:**
 - Check that the **Color Management** is active.
 - **Paper name:** Select the paper type that is loaded on the printer (always calibrated) and “Best” print quality.
 - **Print resolution:** 600 x 600.
 - **Color output mode:** Proof.
 - Select **EFI Profiles** or **ColorSync**.
 - **RGB:** select the source profile of your file if it is RGB or have any RGB image, press **Add profile** button to add it. If you don't have it, select one of the list and Perceptual.
 - **CMYK:** Select the printer profile (generally, it depends on the printer model, the media type and the print mode). Press **Add profile** button to add the profile on the list if it is not there. Select Relative Colorimetric intent (select Absolute Colorimetric if you want to emulate the white of the paper).
 - Check **Use embedded profiles**.



- **Layout:**
 - **Orientation:** Select the orientation of your image on the paper.
 - Set the **Alignment** and the **Scaling** setting you need.
 - **Printer:**
 - **Paper size:** Select the paper size of the media loaded on the printer.
 - Click **OK**.
4. **Add** button, browse your file and click **Open** or drag and drop the file to the spool panel.
 5. Check the print layout before printing, select the file and press the **Preview** button, if it is ready click **Print**. If you need to retouch any setting, you can do it in the **Individual Job Settings** (View menu > Job Info).

For more information on HP Designjet products

www.hp.com/go/designjet

© 2005 Hewlett-Packard Development Company, L.P. The information contained herein is subject to change without notice. The only warranties for HP products and services are set forth in the express warranty statements accompanying such products and services. Nothing herein should be construed as constituting an additional warranty. HP shall not be liable for technical or editorial errors or omissions contained herein.

Adobe Photoshop and PostScript are trademarks of Adobe Systems Incorporated. PANTONE is Pantone, Inc.'s check-standard trademark for color.

Rev. 1.0, 09/2005

