



Proof another printer

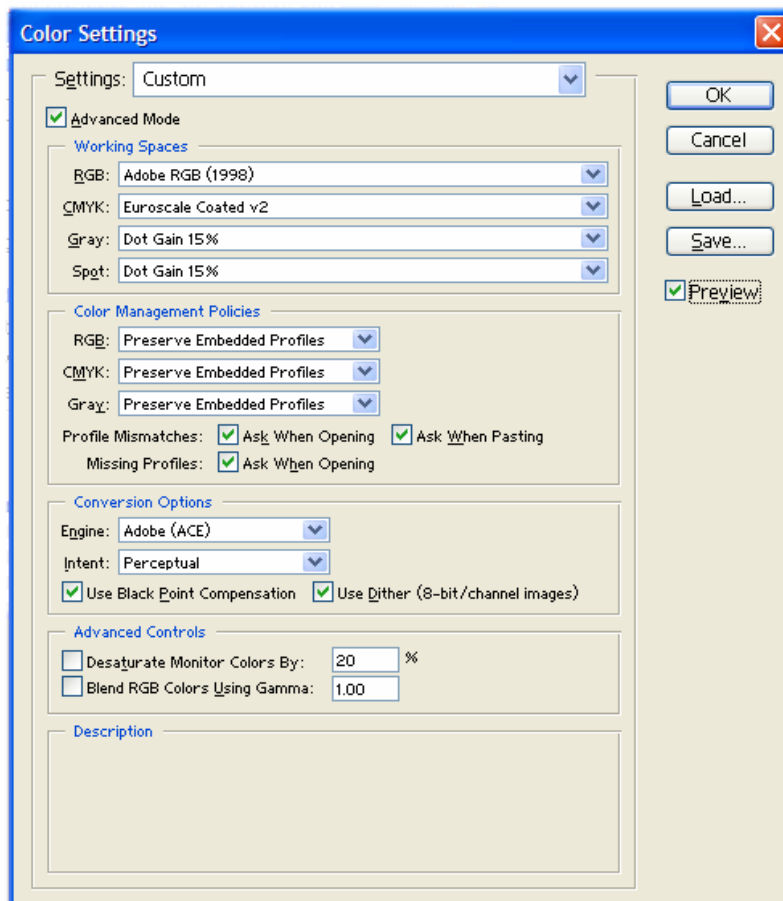
Application: Adobe Photoshop CS

Printer: HP Designjet 30/130 series

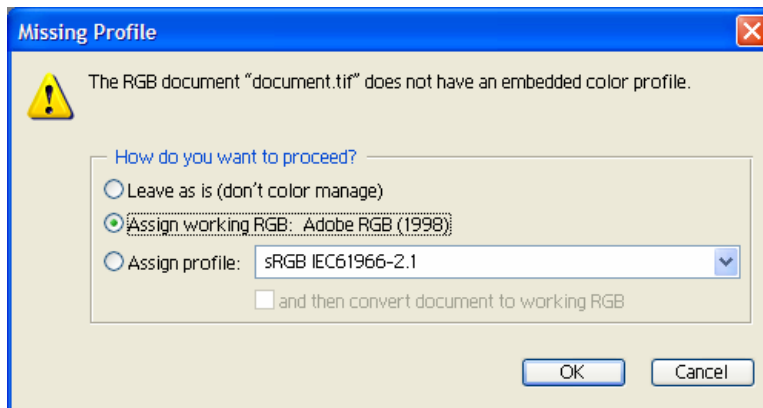
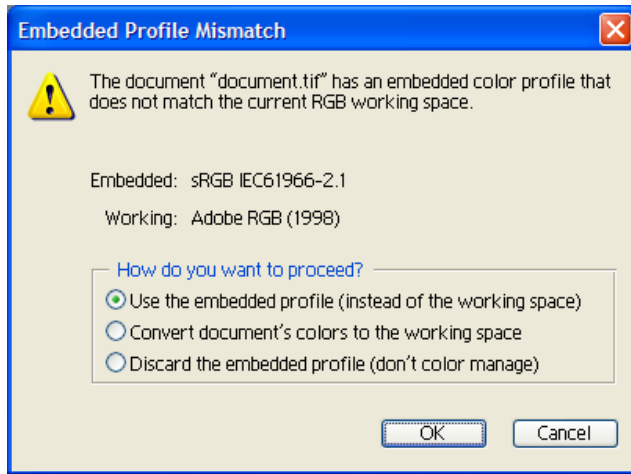
Software: HP Software RIP

Operating System: Windows

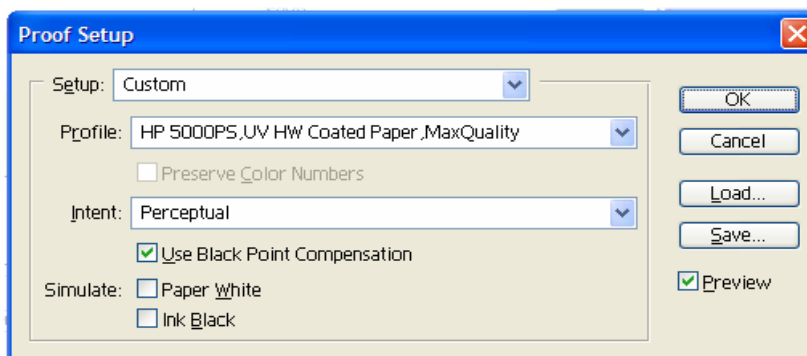
1. First recommendations:
 - Some paper types are better than others for proofing, see the [Media type functionality & features](#) and choose the most appropriate media.
 - It is essential to have the media type correctly calibrated with the printer and print mode, consult the [Calibrate my printer](#) document.
2. Open Adobe Photoshop CS.
3. Configure the **Color Settings, Edit menu > Color Settings...**:
 - Make sure the **Advanced Mode** check box is ticked.
 - **Working Space > RGB**: Adobe RGB (1998).
 - **Working Space > CMYK**: Euroscale Coated v2 (for Europe), U.S. Web Coated (SWOP) v2 (for US) and Japan Standard v2 (for Japan).
 - **Color Management Policies**: Preserve the embedded profiles.
 - **Profile Mismatches**: check **Ask When Opening** and **Ask When Pasting**.
 - **Missing Profiles**: check **Ask When Opening**.
 - **Conversion Options > Intent**: Perceptual (for RGB images) or Relative Colorimetric (for CMYK images).



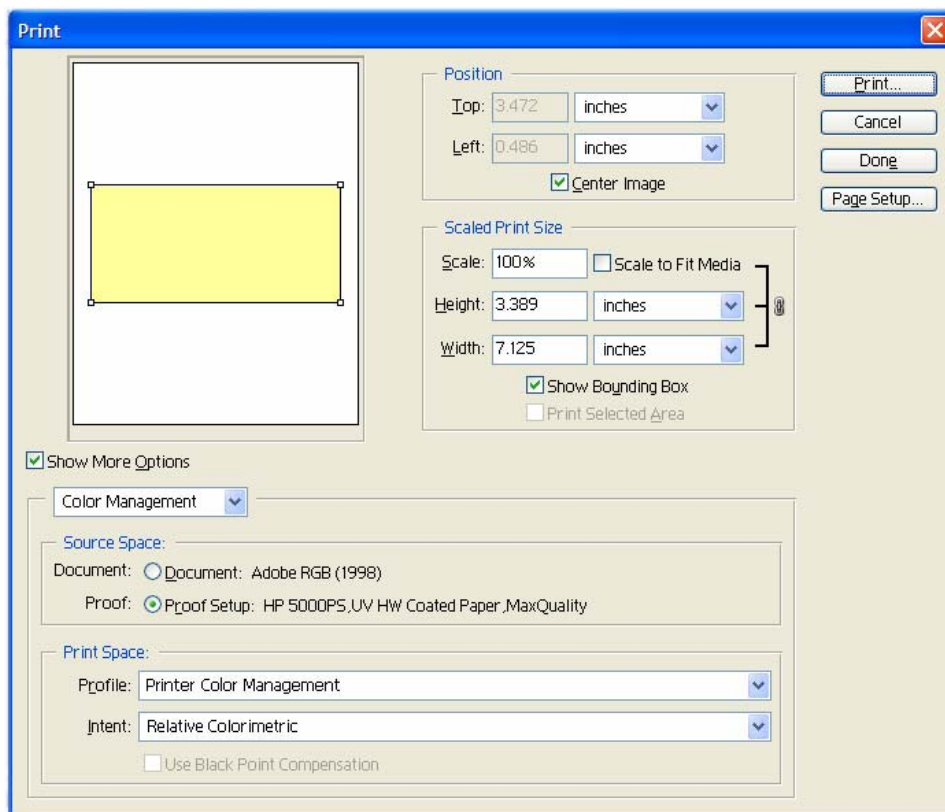
- Click **OK**
4. Open the image, **File menu > Open...**:
 - If the document has an embedded color profile that does not match the current working space, select **Use the embedded profile**. Otherwise, select **Assign working space**.



- Click **OK**.
5. Select your printer profile in the **Proof Setup** dialog box, **View Menu > Proof Setup > Custom...**:
 - **Profile:** Select the printer profile (generally, it depends on the printer model, the media type and the print mode). If you don't have it on the list, you should copy it in the next folder:
Windows 98: WINDOWS>System>Color
Windows NT: WinNT>System32>Color
Windows 2000: C: > WINDOWS > System32 > Spool > Drivers > Color
Windows XP: C: > WINDOWS > System32 > Spool > Drivers > Color
 - **Intent:** Perceptual (for RGB images) or Relative Colorimetric (for CMYK images).
 - Check **Black Point Compensation**.
 - **Simulate > Paper White:** This setting only affects the display, check it if you want to emulate the white of the paper.

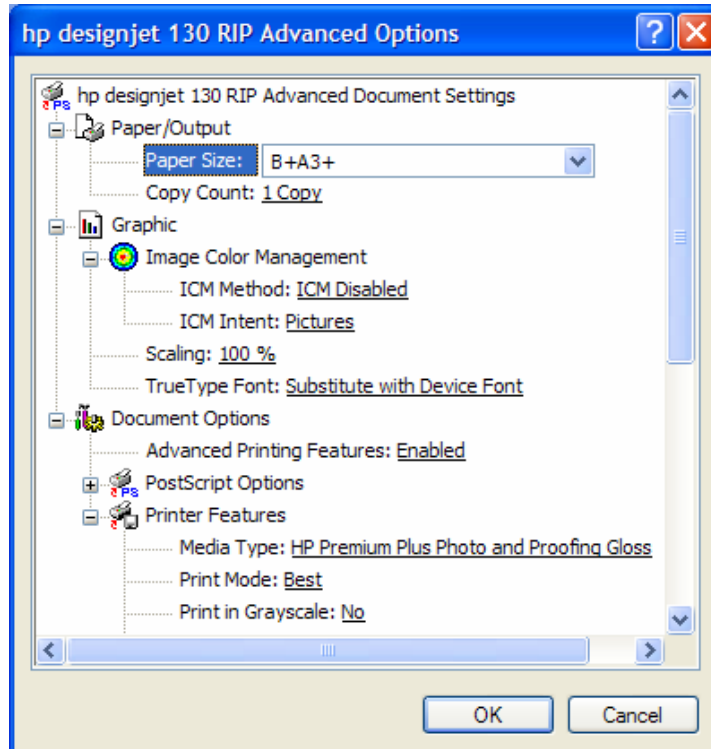


- Click **OK**.
6. Adobe Photoshop **Print with Preview...** settings, **File menu > Print with Preview...**:
- **Page Setup:**
 - **Printer...**: Select the printer (ex. HP designjet 130 RIP).
 - Click **OK**.
 - **Paper Size**: Select the paper size of the media loaded on the printer.
 - **Orientation**: Select the orientation of your image on the paper.
 - Click **OK**.
 - Set the **Position** and the **Scaled Print Size** you need.
 - Check **Show More Options**.
 - Select the **Color Management** tab:
 - **Source Space**: Proof.
 - **Print Space > Profile**: Printer Color Management.
 - **Print Space > Intent**: Relative Colorimetric (select Absolute Colorimetric if you want to emulate the white of the paper).



7. RIP settings, **Print... > Properties > Advanced...**:
- **Document Options > Printer Features:**
 - Select the **Media Type** that is loaded on the printer (always calibrated).
 - **Print Mode**: Best (always calibrated).

- You don't need to worry about the RIP color settings (Perform Color Correction, CMYK and RGB Input Profiles and Color rendering intent) because you have selected **Printer Color Management** option in the application, then, the application tells the RIP which source profile and rendering intent should be used for the conversion to the print space, these are the Document profile and the Print Space Intent of the application. The RIP color settings will be overridden.



- Click **OK** until print.

For more information on HP Designjet products

www.hp.com/go/designjet

© 2005 Hewlett-Packard Development Company, L.P. The information contained herein is subject to change without notice. The only warranties for HP products and services are set forth in the express warranty statements accompanying such products and services. Nothing herein should be construed as constituting an additional warranty. HP shall not be liable for technical or editorial errors or omissions contained herein.

Adobe Photoshop and PostScript are trademarks of Adobe Systems Incorporated. PANTONE is Pantone, Inc.'s check-standard trademark for color.

Rev. 1.0, 09/2005

