



Proof the output on the monitor

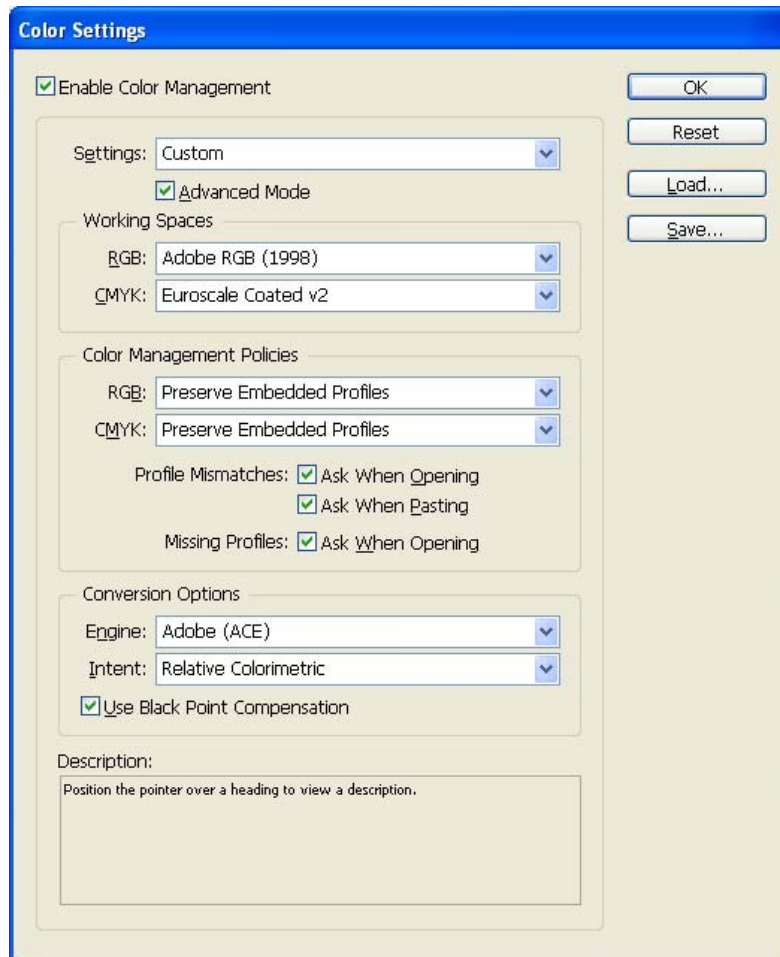
Application: Adobe InDesign CS

Printer: HP Designjet 30/130 series

Software: HP Software RIP

Operating System: Windows

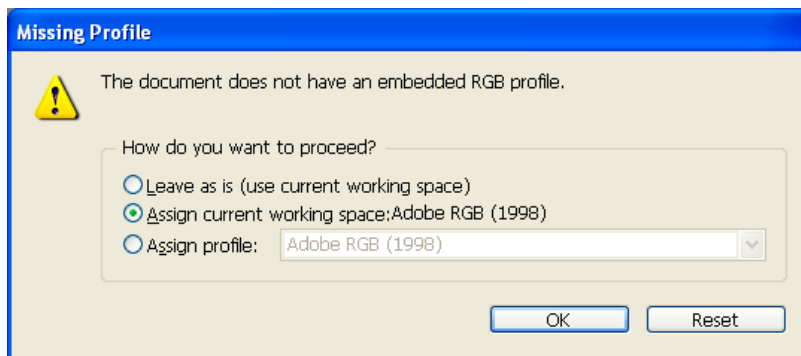
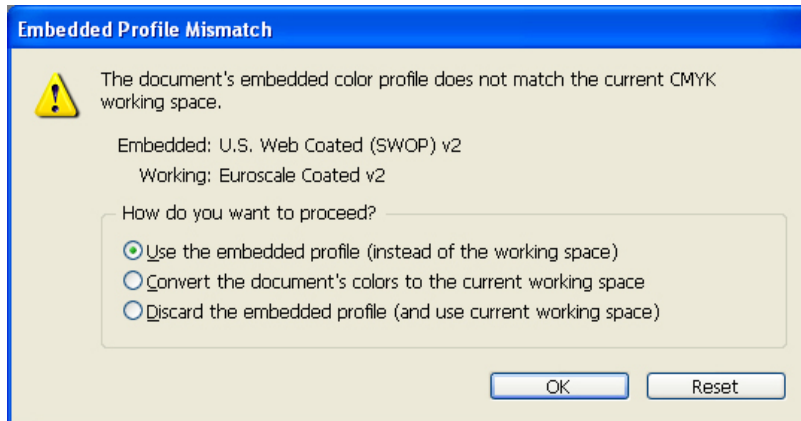
1. First recommendations:
 - See the [Media type functionality & features](#) and choose the most appropriate media.
 - It is essential you have the media type correctly calibrated with the printer and print mode, consult the [Calibrate my printer](#) document.
 - In order to get a correct display, it's also essential you have profiled the monitor, consult the [Profile my monitor](#) document.
2. Open Adobe InDesign CS.
3. Configure the **Color Settings, Edit menu > Color Settings...**:
 - Check the **Enable Color Management** checkbox.
 - Make sure the **Advanced Mode** check box is ticked.
 - **Working Space > RGB**: Adobe RGB (1998).
 - **Working Space > CMYK**: Euroscale Coated v2 (for Europe), U.S. Web Coated (SWOP) v2 (for US) and Japan Standard v2 (for Japan).
 - **Color Management Policies**: Preserve Embedded Profiles.
 - **Profile Mismatches**: check **Ask When Opening** and **Ask When Pasting**.
 - **Missing Profiles**: check **Ask When Opening**.
 - **Conversion Options > Intent**: Relative Colorimetric.



- Click **OK**.

4. Open the image, **File menu > Open...**:

- If the document has an embedded color profile that does not match the current working space, select **Use the embedded profile**. Otherwise, select **Assign current working space**.



- Click **OK**.

5. Place the images if needed, **File menu > Place...**, browse the image and click **Open...**.

6. So that you get a good display select a High Quality Display, **View menu > Display performance > High Quality Display**.

7. Make sure you have configured the **Document Setup** appropriately for your document, **File menu > Document Setup...**

8. Configure the **Proof Setup** dialog box in order to proof the output on the monitor, **View menu > Proof Setup > Custom...**:

- **Profile:** Select the profile of the output device you want to proof; the printer profile generally depends on the printer model and the media type. If you don't have it on the list, you should copy it in the next folder:

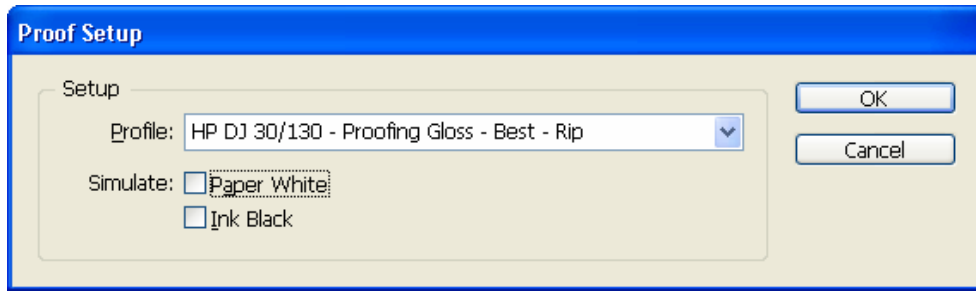
Windows 98: WINDOWS>System>Color

Windows NT: WinNT>System32>Color

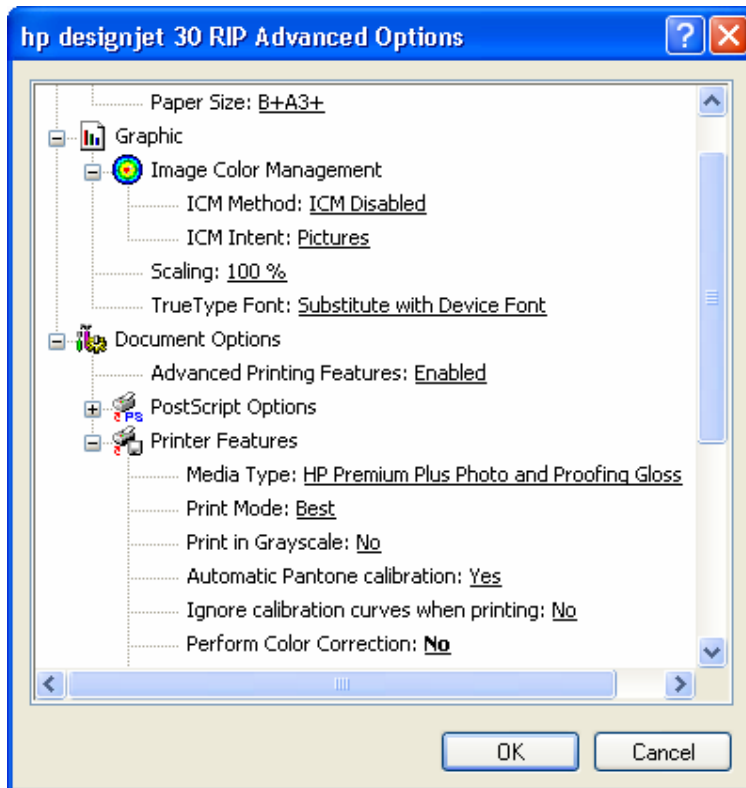
Windows 2000: C: > WINDOWS > System32 > Spool > Drivers > Color

Windows XP: C: > WINDOWS > System32 > Spool > Drivers > Color

- **Simulate > Paper White:** This setting only affects the display, check it if you want to emulate the white of the paper.



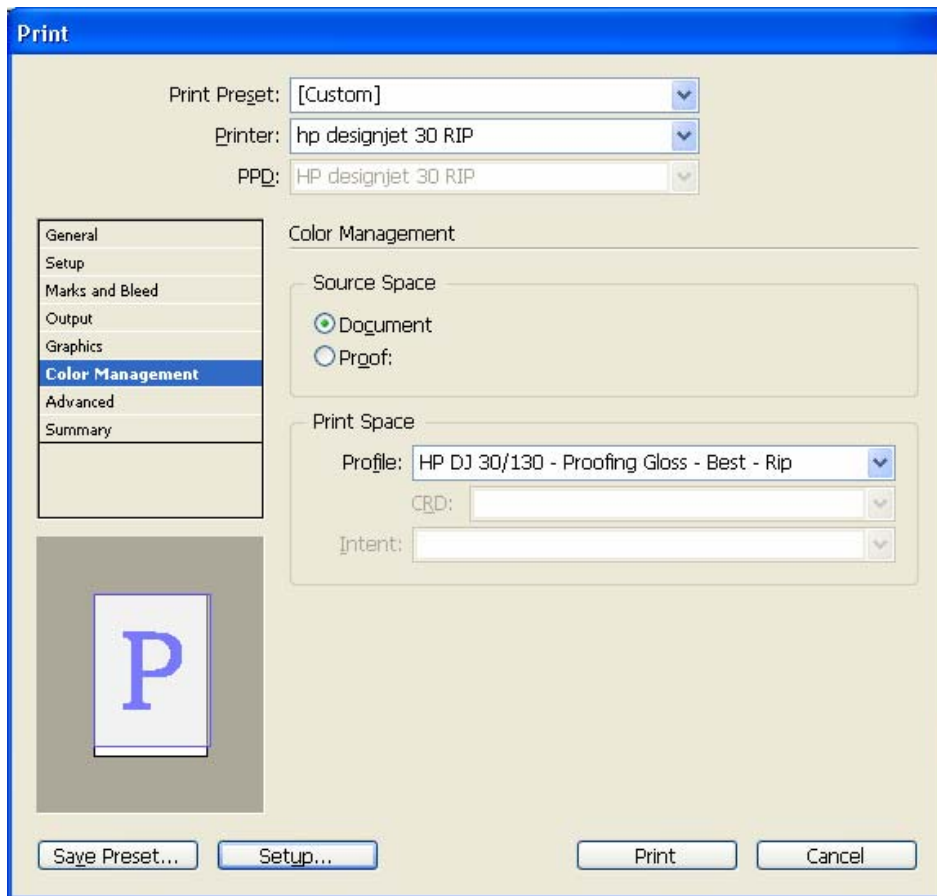
- Click **OK**.
 - Now, you can retouch your image and the monitor will show you how it's going to look once you've printed it.
9. RIP settings, **File menu > Print... > Setup...** button:
- **Select Printer...:** Select the printer (ex. HP designjet 130 RIP).
 - **Preferences:**
 - **Layout** tab:
 - **Orientation:** Select the orientation of your document on the paper.
 - **Advanced...** button:
 - **Paper/Output > Paper Size:** Select the paper size of the media loaded on the printer.
 - **Document Options > Printer Features:**
 - Select the **Media Type** that is loaded on the printer (always calibrated), it should be the same as selected in the **Proof Setup** dialog box.
 - **Print Mode:** Best (always calibrated).
 - **Perform Color Correction:** No.



- Click **OK** until the InDesign **Print** dialog box.

10. Adobe InDesign **Print...** settings:

- **Setup** (left hand menu):
 - **Paper Size:** Defined by Driver.
 - **Options:** Select the scaling option you need.
- **Output** (left hand menu):
 - **Color:** Composite CMYK.
- **Color Management** (left hand menu):
 - **Source Space:** Document.
 - **Print Space > Profile:** Select the profile of the printer and media type you will use to print, it should be the same as selected in the **Proof Setup** dialog box.



- Click **Print**.

For more information on HP Designjet products

www.hp.com/go/designjet

© 2005 Hewlett-Packard Development Company, L.P. The information contained herein is subject to change without notice. The only warranties for HP products and services are set forth in the express warranty statements accompanying such products and services. Nothing herein should be construed as constituting an additional warranty. HP shall not be liable for technical or editorial errors or omissions contained herein.

Adobe Photoshop and PostScript are trademarks of Adobe Systems Incorporated. PANTONE is Pantone, Inc.'s check-standard trademark for color.

Rev. 1.0, 09/2005

