



Proof the output on the monitor

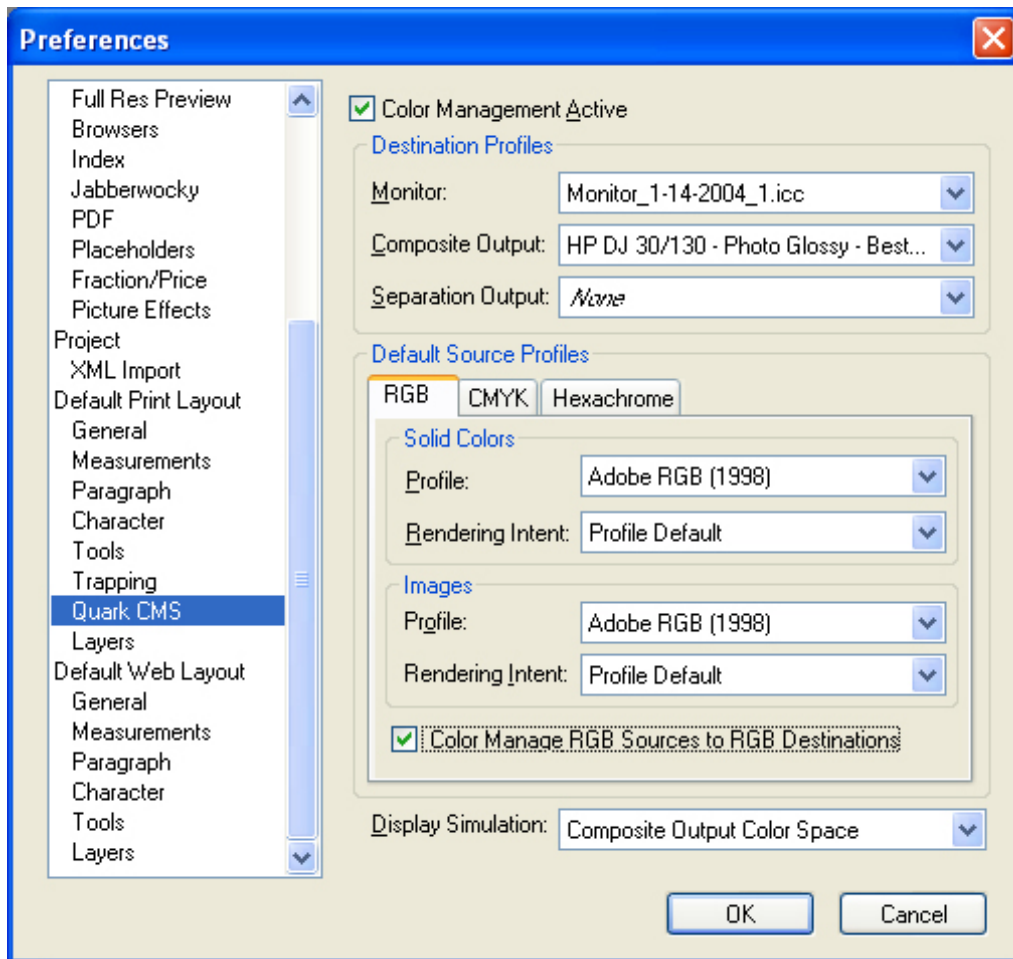
Application: QuarkXPress 6.5

Printer: HP Designjet 30/130 series

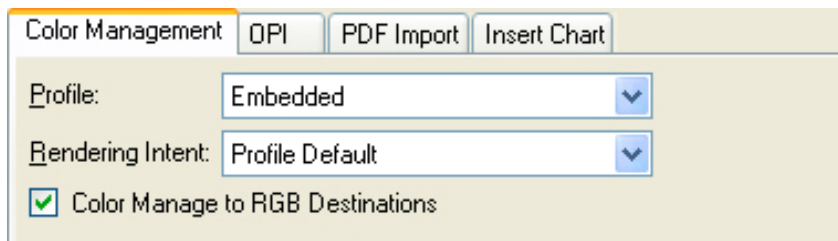
Software: HP Software RIP

Operating System: Windows

1. First recommendations:
 - See the [Media type functionality & features](#) and choose the most appropriate media.
 - It is essential that you have the media type correctly calibrated with the printer and print mode, consult the [Calibrate my printer](#) document.
 - In order to get the correct display, it's also essential that you have the monitor calibrated, consult the [Profile my monitor](#) document. Normally, it is placed in the folder:
 - Windows 98:* C:\WINDOWS\SYSTEM\COLOR.
 - Windows 2000 and Me:* C:\WINNT\SYSTEM32\SPOOL\DRIVERS\COLOR.
 - Windows XP:* C:\WINDOWS\SYSTEM32\SPOOL\DRIVERS\COLOR.
 - Windows NT:* C:\WINNT\SYSTEM32\COLOR.
 - If you need to add color profiles in the application, copy them from the following folders:
 - Windows 98 and Windows ME:* C:\WINDOWS\SYSTEM\COLOR.
 - Windows XP:* C:\WINDOWS\SYSTEM32\COLOR.
 - Windows 2000 and Windows NT:* C:\WINNT\SYSTEM32\COLOR.
2. Open QuarkXpress.
3. Configure the color **Preferences, Edit menu > Preferences... > Quark CMS** (left hand menu):
 - Check the **Color Management Active** checkbox.
 - **Destination Profiles:**
 - **Monitor:** Select your monitor profile (see the recommendations in section 1).
 - **Composite Output:** Select the output device you want to emulate on the monitor (the profile of the printer and media type you will select on the printer RIP).
 - **Default Source Profiles > RGB** tab:
 - **Profile** (Solid Colors/Images): Adobe RGB (1998).
 - **Rendering Intent** (Solid Colors/Images): Profile Default.
 - Check **Color Manage RGB Sources to RGB Destinations.**
 - **Default Source Profiles > CMYK** tab:
 - **Profile** (Solid Colors/Images): SWOP Press..
 - **Rendering Intent** (Solid Colors/Images): Profile Default.
 - Check **Color Manage CMYK Sources to CMYK Destinations.**
 - **Display simulation:** Select **Composite Output Color Space** to emulate the output device on the monitor.



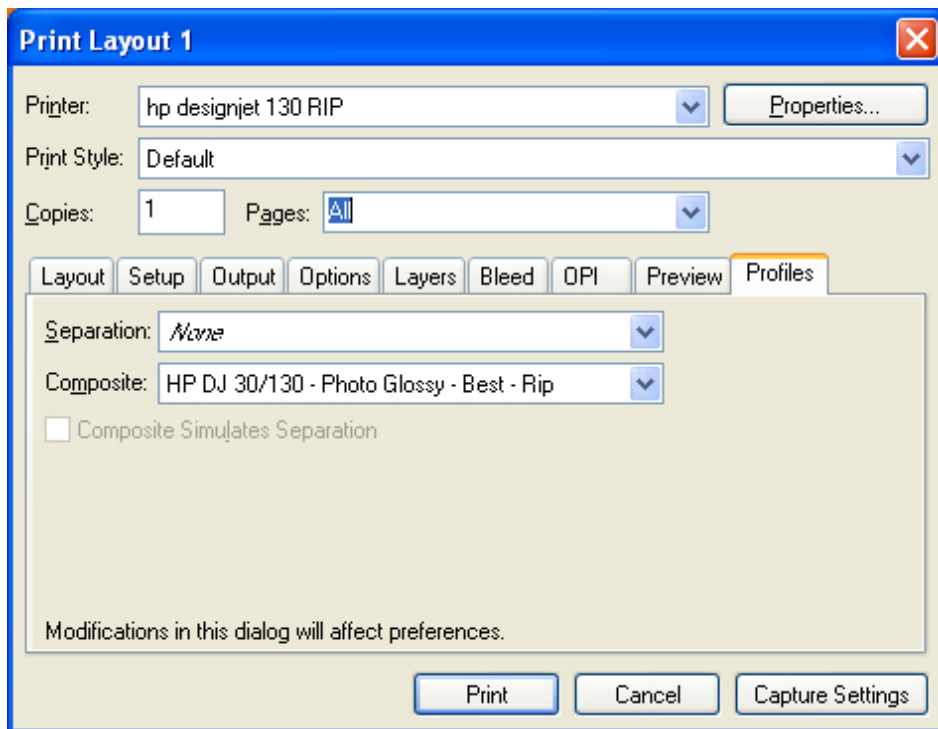
- Click **OK**.
4. Open your project, **File menu > Open...**, and browse to it. To insert images, draw a box with the **Rectangle Picture Box** and insert the image, **File menu > Get Picture...**:
 - Browse the file.
 - **Color Management** tab:
 - **Profile:** If the image has an Embedded profile, preserve it, if not, select Default.
 - **Rendering Intent:** Profile Default.
 - Check **Color Manage to RGB/CMYK Destinations**.



- Click **Open**.
5. So that you get a good display select the image, and then, **Item menu > Preview Resolution: Full Resolution**.
 6. You can now retouch your image and the monitor will show you how it's going to look once you've printed it.

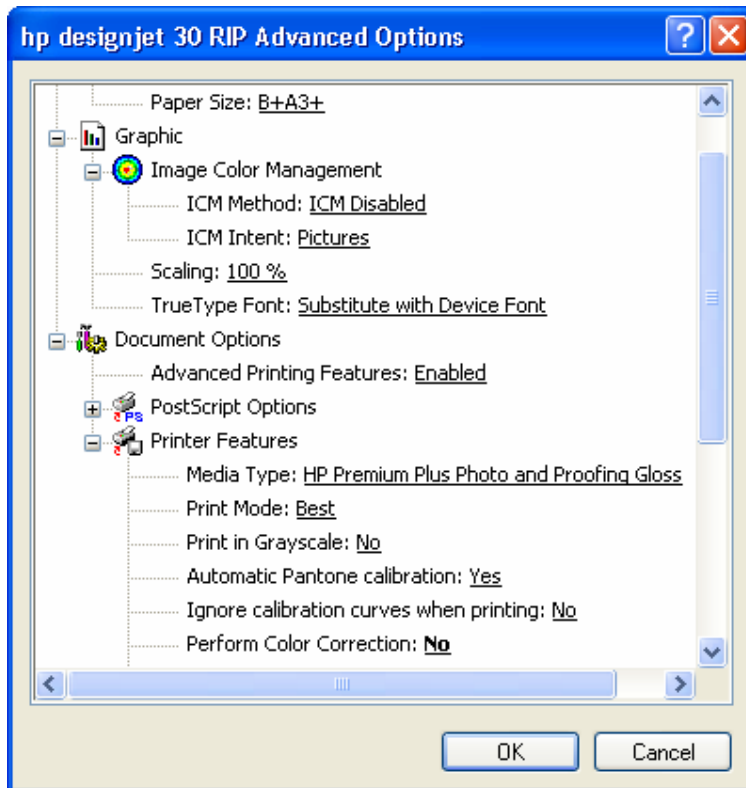
7. QuarkXPress print settings, **File menu > Print...**:

- **Printer:** Select the printer (ex. HP Designjet 130 RIP).
- **Layout tab:** Uncheck **Separations**.
- **Setup tab:**
 - **Printer Description:** HP Designjet 130 RIP.
 - **Paper size:** Select the paper size of the media loaded on the printer.
 - **Reduce or Enlarge:** Select the scaling factor you need.
 - **Page Position:** Select the page position you need if the image is smaller than the paper size.
 - **Orientation:** Select the orientation of your document on the paper.
- **Output tab > Print Colors:** Composite CMYK.
- **Preview tab:** Check the preview of your image on the paper.
- **Profiles tab > Composite:** Select the output device you wanted to emulate on the monitor (the profile of the printer and media type you will select on the printer RIP).



8. Printer settings, **Properties...** button:

- **Advanced...** button:
 - **Paper/Output > Paper Size:** Select the paper size you have already selected on the QuarkXPress print dialog box.
 - **Document Options > Printer Features:**
 - Select the **Media Type** that is loaded on the printer, it should be the same as selected in the **Print** dialog box.
 - **Print Mode:** Best.
 - **Perform Color Correction:** No.



- Click **OK** and **Print**.

For more information on HP Designjet products

www.hp.com/go/designjet

© 2005 Hewlett-Packard Development Company, L.P. The information contained herein is subject to change without notice. The only warranties for HP products and services are set forth in the express warranty statements accompanying such products and services. Nothing herein should be construed as constituting an additional warranty. HP shall not be liable for technical or editorial errors or omissions contained herein.

Adobe Photoshop and PostScript are trademarks of Adobe Systems Incorporated. PANTONE is Pantone, Inc.'s check-standard trademark for color.

Rev. 1.0, 09/2005

