



Proof the output on the monitor

Application: QuarkXPress 6.5

Printer: HP Designjet 30/90/130 series

Software: EFI Designer Edition for HP

Operating System: Windows

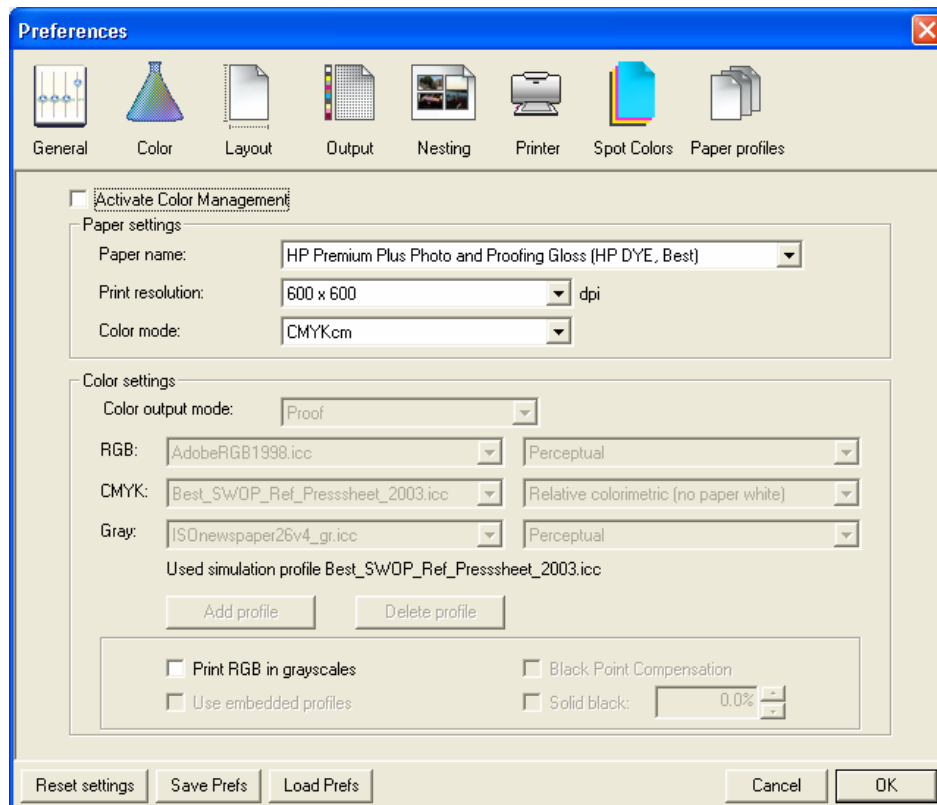
1. First recommendations:

- See the [Media type functionality & features](#) and choose the most appropriate media.
- It is essential that you have the media type correctly calibrated with the printer and print mode, consult the [Calibrate my printer](#) document.
- In order to get a correct display, it's also essential that you have the monitor calibrated, consult the [Profile my monitor](#) document. Normally, it is placed in the folder:
Windows 98: C:\WINDOWS\SYSTEM\COLOR.
Windows 2000 and Me: C:\WINNT\SYSTEM32\SPOOL\DRIVERS\COLOR.
Windows XP: C:\WINDOWS\SYSTEM32\SPOOL\DRIVERS\COLOR.
Windows NT: C:\WINNT\SYSTEM32\COLOR.
- If you need to add color profiles in the application, copy them in the next folder:
Windows 98 and Windows ME: C:\WINDOWS\SYSTEM\COLOR.
Windows XP: C:\WINDOWS\SYSTEM32\COLOR.
Windows 2000 and Windows NT: C:\WINNT\SYSTEM32\COLOR.

2. Open the EFI Designer Edition RIP.

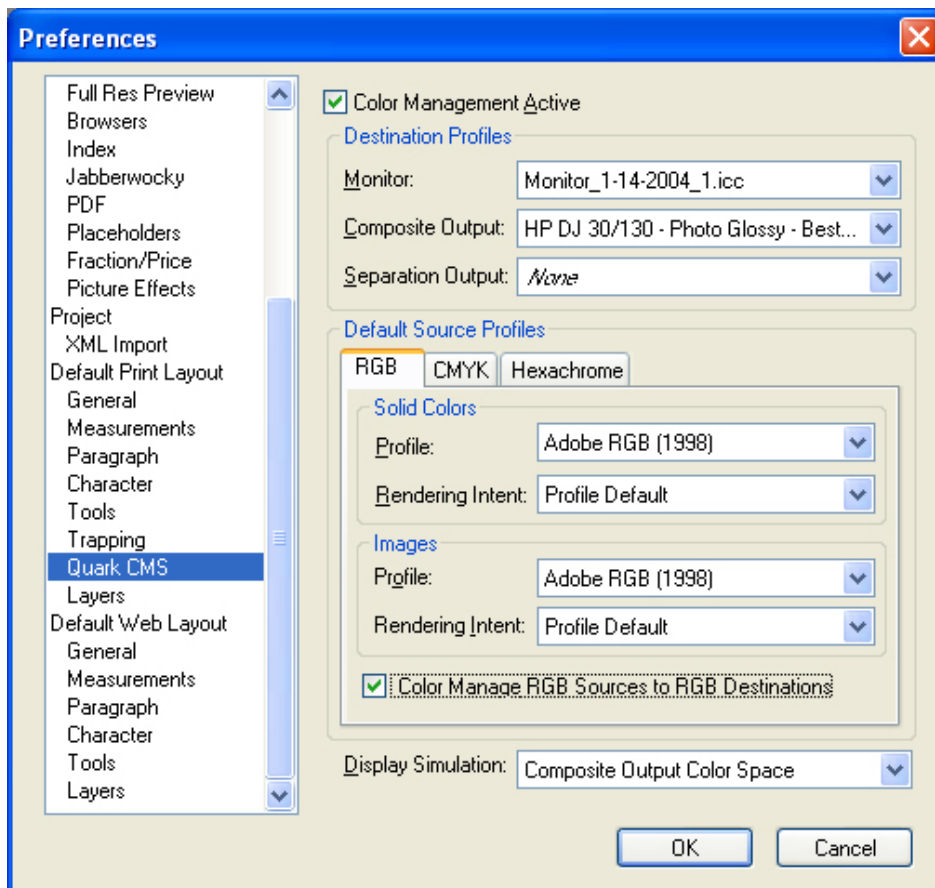
3. EFI Designer Edition RIP settings, **Preferences:**

- **General:** In order to see the print preview in the RIP before printing, uncheck the **Automatic start printing after spooling** checkbox.
- **Color:**
 - Uncheck the **Active Color Management** checkbox.
 - **Paper name:** Select the paper type that is loaded on the printer (always calibrated) and "Best" print quality.
 - **Print resolution:** 600 x 600.



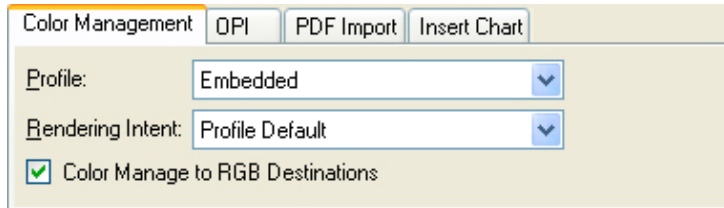
- Click **OK**.

4. Open QuarkXpress.
5. Configure the color **Preferences, Edit menu > Preferences... > Quark CMS** (left hand menu):
 - Check the **Color Management Active** checkbox.
 - **Destination Profiles:**
 - **Monitor:** Select your monitor profile (see the recommendations in section 1).
 - **Composite Output:** Select the output device you want to emulate on the monitor (the profile of the printer and media type you have selected on the RIP).
 - **Default Source Profiles > RGB** tab:
 - **Profile** (Solid Colors/Images): Adobe RGB (1998).
 - **Rendering Intent** (Solid Colors/Images): Profile Default.
 - Check **Color Manage RGB Sources to RGB Destinations**.
 - **Default Source Profiles > CMYK** tab:
 - **Profile** (Solid Colors/Images): SWOP Press..
 - **Rendering Intent** (Solid Colors/Images): Profile Default.
 - Check **Color Manage CMYK Sources to CMYK Destinations**.
 - **Display simulation:** Select **Composite Output Color Space** to emulate the output device on the monitor.

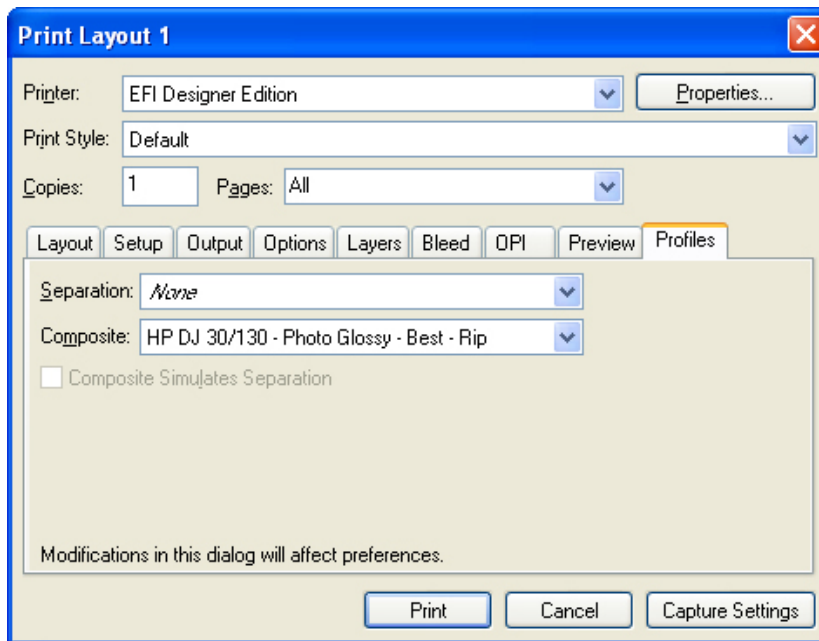


- Click **OK**.

6. Open your project, **File menu > Open...** , and browse it. To insert images, draw a box with the **Rectangle Picture Box** and insert the image, **File menu > Get Picture...**:
 - Browse to the file.
 - **Color Management** tab:
 - **Profile:** If the image has an Embedded profile, preserve it, if not, select Default.
 - **Rendering Intent:** Profile Default.
 - Check **Color Manage to RGB/CMYK Destinations.**



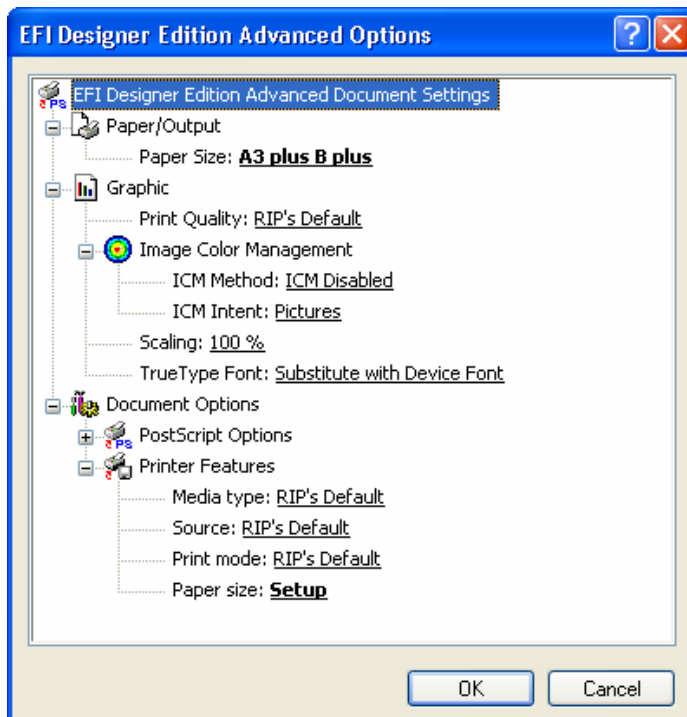
- Click **Open**.
7. So that you get a good display select the image, and then, **Item menu > Preview Resolution: Full Resolution**.
 8. Now, you can retouch your image and the monitor will show you how it's going to look once you've printed it.
 9. QuarkXPress print settings, **File menu > Print...**:
 - **Printer:** Select the printer (ex. EFI Designer Edition).
 - **Layout tab:** Uncheck **Separations**.
 - **Setup tab:**
 - **Printer Description:** EFI Software Printer.
 - **Paper size:** Select the paper size of the media loaded on the printer.
 - **Reduce or Enlarge:** Select the scaling factor you need.
 - **Page Position:** Select the page position you need if the image is smaller than the paper size.
 - **Orientation:** Select the orientation of your document on the paper.
 - **Output tab > Print Colors:** Composite CMYK.
 - **Preview tab:** Check the preview of your image on the paper.
 - **Profiles tab > Composite:** Select the output device you wanted to emulate on the monitor (the profile of the printer and media type you have selected on the RIP).



10. Printer settings, **Properties...** button:

- **Advanced...:**

- **Paper/Output > Paper Size:** Select the paper size you have already selected on the QuarkXPress print dialog box.
- **Document Options > Printer Features:**
 - **Paper Size:** Setup
 - Select **RIP's Default** on the others settings.



- Click **OK** and **Print**.

11. To see the print preview go to the EFI Designer Edition RIP, select the file you have just sent from QuarkXPress and press the **Preview** button, if it is ready click **Print**.

For more information on HP Designjet products

www.hp.com/go/designjet

© 2005 Hewlett-Packard Development Company, L.P. The information contained herein is subject to change without notice. The only warranties for HP products and services are set forth in the express warranty statements accompanying such products and services. Nothing herein should be construed as constituting an additional warranty. HP shall not be liable for technical or editorial errors or omissions contained herein.

Adobe Photoshop and PostScript are trademarks of Adobe Systems Incorporated. PANTONE is Pantone, Inc.'s check-standard trademark for color.

Rev. 1.0, 09/2005

