



Proof the output on the monitor

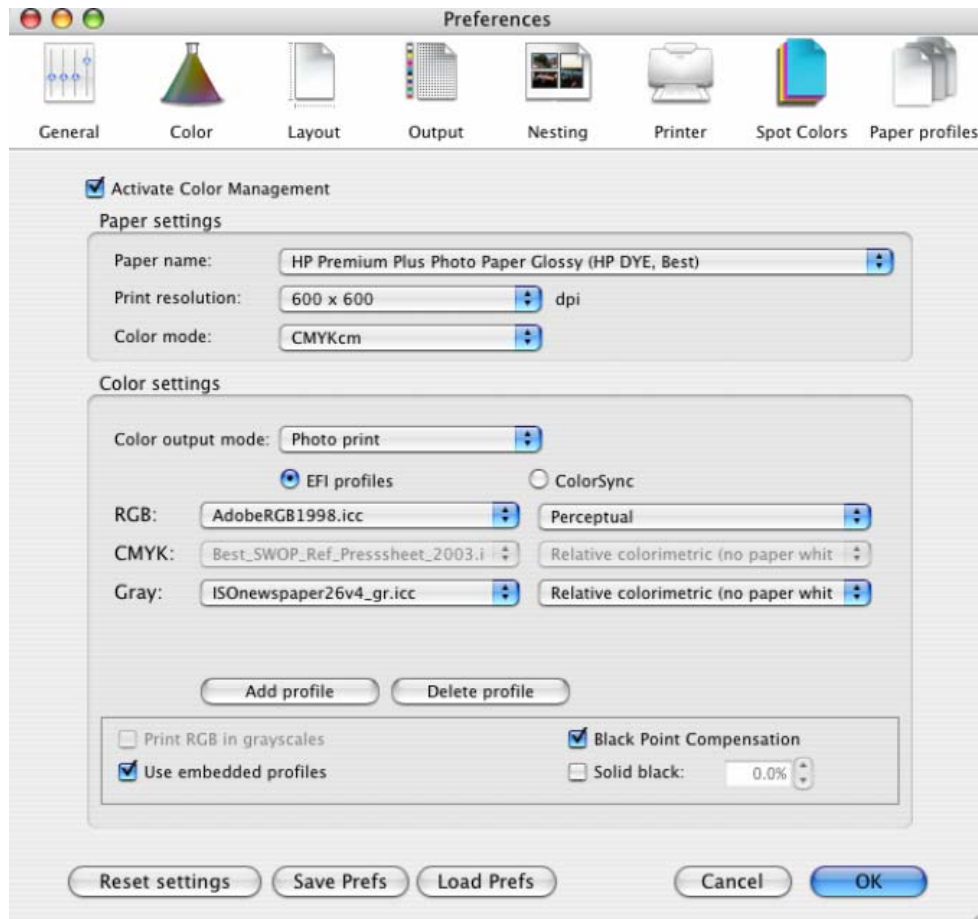
Application: Adobe Photoshop CS

Printer: HP Designjet 30/90/130 series

Software: EFI Designer Edition for HP

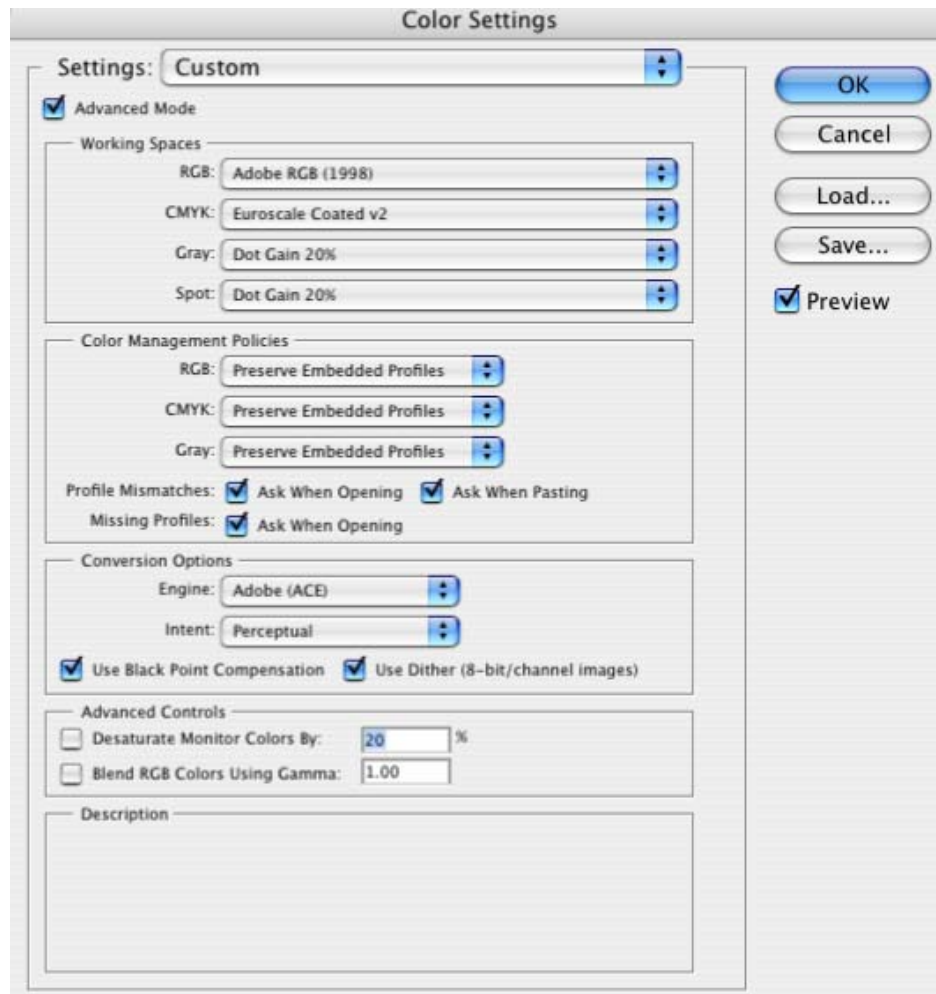
Operating System: Mac OS X

1. First recommendations:
 - See the [Media type functionality & features](#) and choose the most appropriate media.
 - It is essential you have the media type correctly calibrated with the printer and print mode, consult the [Calibrate my printer](#) document.
 - In order to get a correct display, it's also essential you have the monitor calibrated, consult the [Profile my monitor](#) document.
2. Open the EFI Designer Edition RIP.
3. EFI Designer Edition RIP settings, **Preferences**:
 - **Color**:
 - Check the **Active Color Management** checkbox.
 - **Paper name**: Select the paper type that is loaded on the printer (always calibrated) and "Best" print quality.
 - **Print resolution**: 600 x 600.
 - **Color output mode**: Photo print.
 - You don't need to worry about the profiles and rendering intent because you will select **Printer Color Management** option in the application, then, the application tells the RIP which source profile and rendering intent should be used for the conversion to the print space, these are the Document profile and the Print Space Intent of the application. The RIP color settings will be overridden.

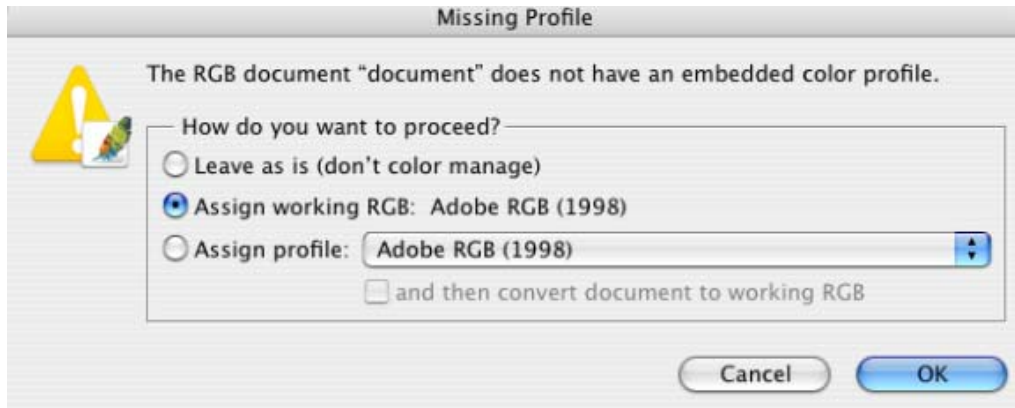


- **OK**

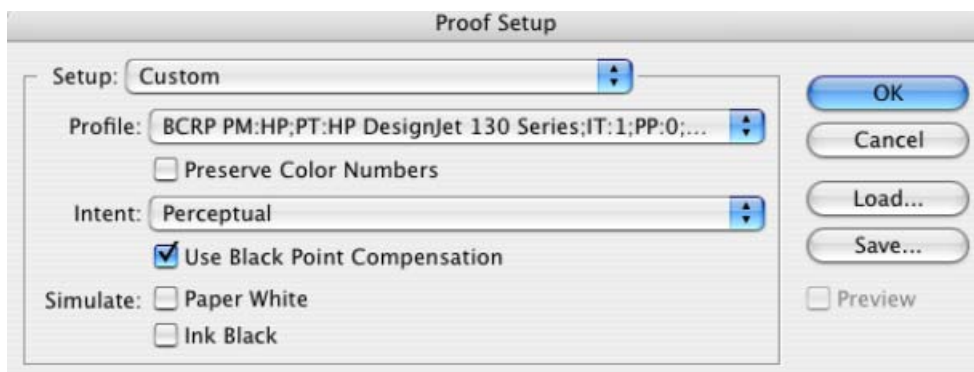
4. Open Adobe Photoshop CS.
5. Configure the **Color Settings, Photoshop menu > Color Settings...**:
 - Make sure the **Advanced Mode** check box is ticked.
 - **Working Space > RGB**: Adobe RGB (1998).
 - **Working Space > CMYK**: Euroscale Coated v2 (for Europe), U.S. Web Coated (SWOP) v2 (for US) and Japan Standard v2 (for Japan).
 - **Color Management Policies**: Preserve the embedded profiles.
 - **Profile Mismatches**: check **Ask When Opening** and **Ask When Pasting**.
 - **Missing Profiles**: check **Ask When Opening**.
 - **Conversion Options > Intent**: Perceptual (for RGB images) or Relative Colorimetric (for CMYK images).



- Click **OK**
6. Open the image, **File menu > Open...**:
 - If the document has an embedded color profile that does not match the current working space, select **Use the embedded profile**. Otherwise, select **Assign working space**.



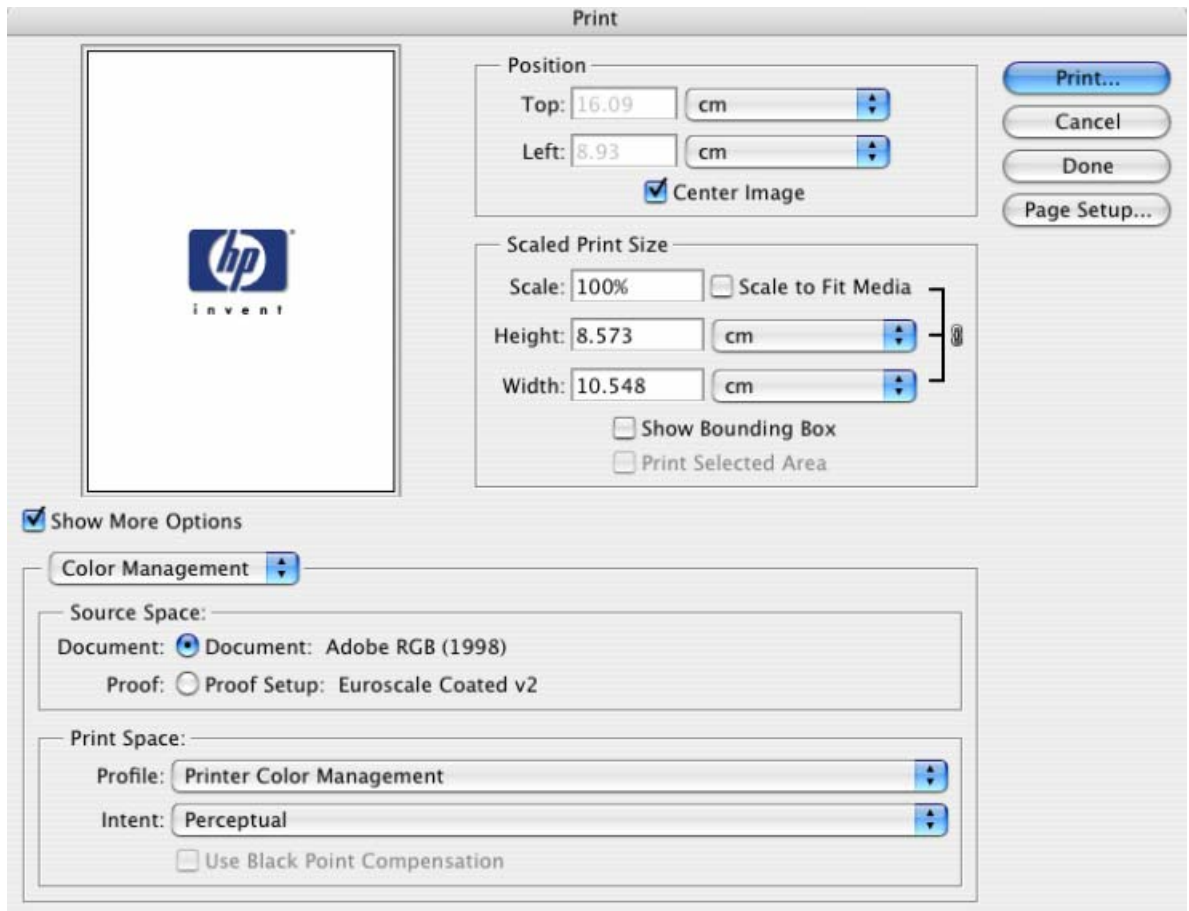
- Click **OK**.
7. Configure the **Proof Setup** dialog box in order to check the output on the monitor, **View Menu > Proof Setup > Custom...**:
- **Profile:** Select the profile of the output device you want to check; the printer profile generally depends on the printer model, the media type and the print mode. If you don't have it on the list, you should copy it into the folder: */Library/ColorSync/Profiles*.
 - **Intent:** Perceptual (for RGB images) or Relative Colorimetric (for CMYK images).
 - Check **Black Point Compensation**.
 - **Simulate > Paper White:** Check it if you want to emulate the whiteness of the paper.



- Click **OK**.
- Now, you can retouch your image and the monitor will reflect correctly what your image will look like once printed.

8. Adobe Photoshop **Print with Preview...** settings, **File menu > Print with Preview...**:

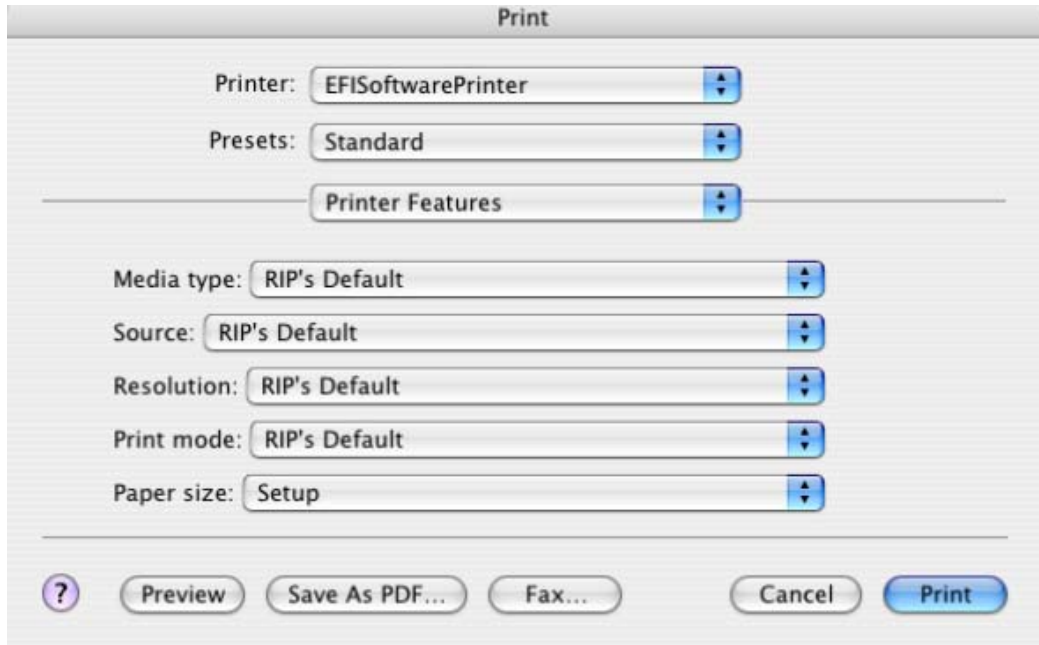
- **Page Setup:**
 - **Format for...:** Select the printer (ex. EFI SoftwarePrinter).
 - **Paper Size:** Select the paper size of the media loaded on the printer.
 - **Orientation:** Select the orientation of your image on the paper.
 - Click **OK**.
- Set the **Position** and the **Scaled Print Size** you need.
- Check **Show More Options**.
- Select the **Color Management** tab:
 - **Source Space:** Document.
 - **Print Space > Profile:** Printer Color Management.
 - **Print Space > Intent:** Perceptual (for RGB images) or Relative Colorimetric (for CMYK images), it should be the same selected as in the **Proof Setup** dialog box.



9. Print, **Print...**:

- **Printer:** Select the printer (ex. EFI SoftwarePrinter).
- **Printer Features** (Mac OS X v10.3):

- **Paper Size:** Setup.
- Select **RIP's Default** on the others settings.



- Click **Print**.

For more information on HP Designjet products

www.hp.com/go/designjet

© 2005 Hewlett-Packard Development Company, L.P. The information contained herein is subject to change without notice. The only warranties for HP products and services are set forth in the express warranty statements accompanying such products and services. Nothing herein should be construed as constituting an additional warranty. HP shall not be liable for technical or editorial errors or omissions contained herein.

Adobe Photoshop and PostScript are trademarks of Adobe Systems Incorporated. PANTONE is Pantone, Inc.'s check-standard trademark for color.

Rev. 1.0, 09/2005

