



Proof a press with CMYK

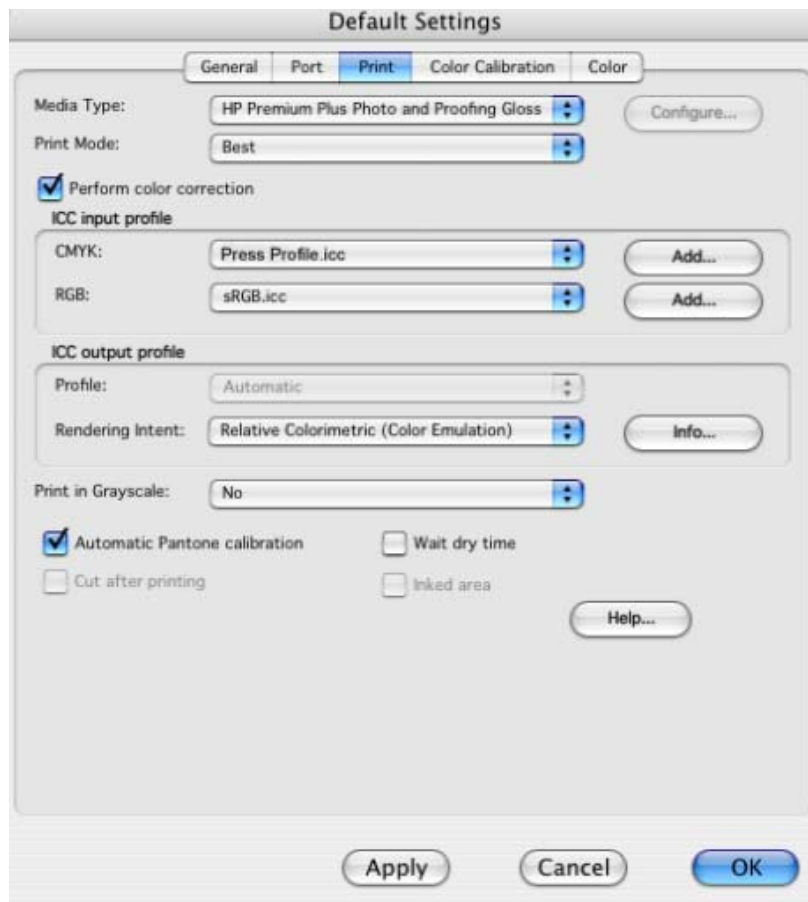
Application: Adobe Illustrator CS

Printer: HP Designjet 30/130 series

Software: HP Software RIP

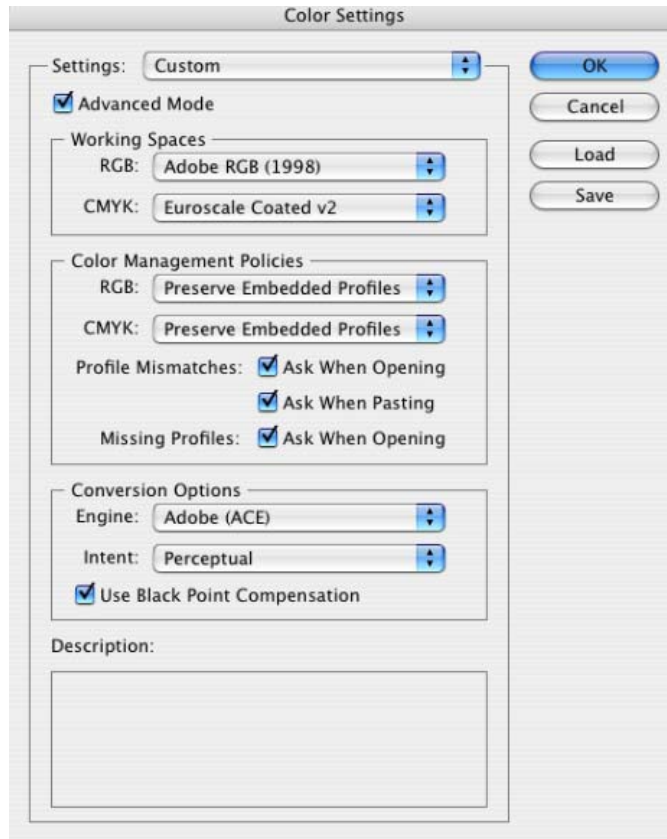
Operating System: Mac OS X

1. First recommendations:
 - Some paper types are better than others for proofing, see the [Media type functionality & features](#) and choose the most appropriate media.
 - It is essential to have the media type correctly calibrated with the printer and print mode, consult the [Calibrate my printer](#) section.
2. Add the press profile you want to emulate in Adobe Illustrator CS and in the HP Software RIP, if it isn't there.
 - If you need to add the press profile in the application, copy it to the next folder:
/Library/ColorSync/Profiles
 - If you need to add the press profile in the HP Software RIP:
 - Open the HP Software RIP.
 - Open the **Default Settings** menu, **Setup menu > Default Settings... > Print** tab:
 - Check **Perform Color Correction**.
 - **ICC input profile > CMYK > Add...**: browse and add the press profile.



- Click **OK**.
3. Open Adobe Illustrator CS.
 4. Configure the **Color Settings, Edit menu > Color Settings...**:
 - Make sure the **Advanced Mode** check box is ticked.
 - **Working Space > RGB**: select Adobe RGB (1998).

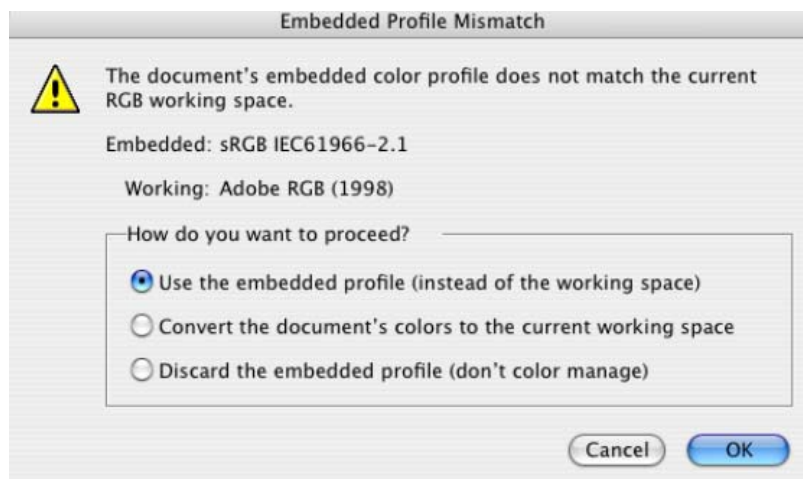
- **Working Space > CMYK:** Euroscale Coated v2 (for Europe), U.S. Web Coated (SWOP) v2 (for US) and Japan Standard v2 (for Japan).
- **Color Management Policies:** Preserve the Embedded Profiles.
- **Profile Mismatches:** check **Ask When Opening** and **Ask When Pasting**.
- **Missing Profiles:** check **Ask When Opening**.
- **Conversion Options > Intent:** Perceptual (for RGB images) or Relative Colorimetric (for CMYK images).

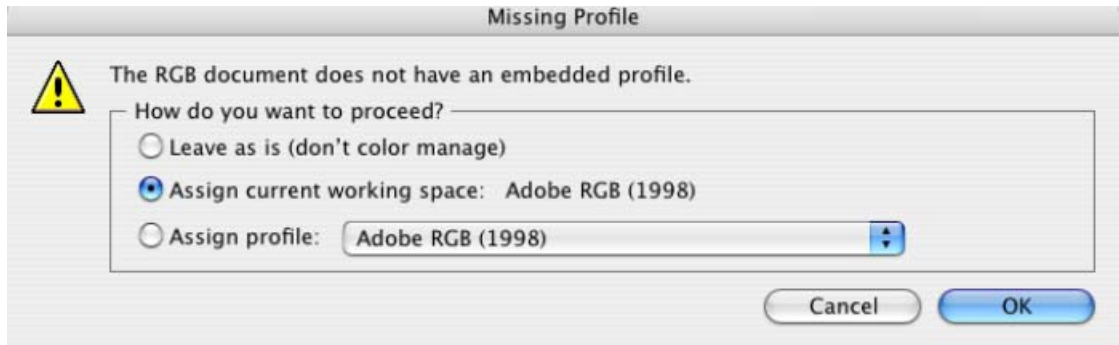


- Click **OK**

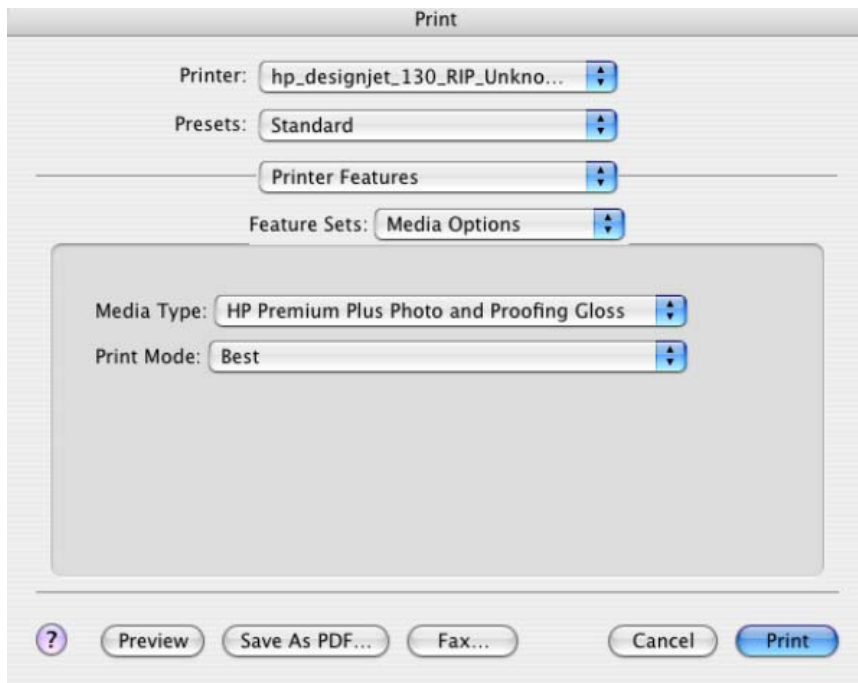
5. Open the image, **File menu > Open...**:

- If the document has an embedded color profile that does not match the current working space, select **Use the embedded profile**. Otherwise, select **Assign working space**.



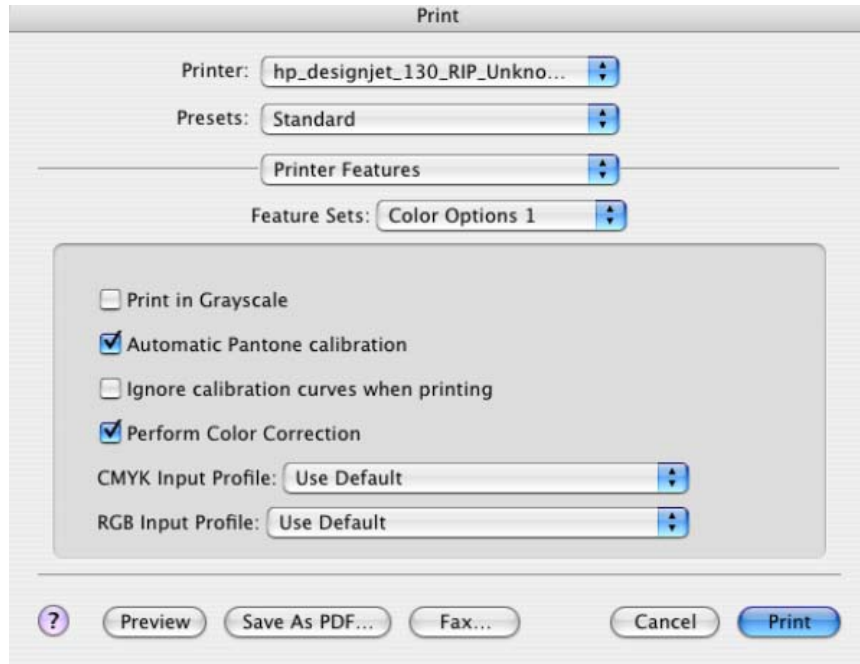


- Click **OK**.
6. Make sure you have configured the **Document Setup** appropriately for your document, **File menu > Document Setup...**
 7. RIP settings, **File menu > Print...:**
 - **Printer:** Select the printer (ex. hp_designjet_130_RIP).
 - **Page Setup...:**
 - **Format for:** Select the printer.
 - **Paper Size:** Select the paper size of the media loaded on the printer.
 - **Orientation:** Select the orientation of your image on the paper.
 - Click **OK**.
 - **Printer... button > Printer Features** (Mac OS X v10.3):
 - **Media Options:**
 - Select the **Media Type** that is loaded on the printer (always calibrated).
 - **Print Mode:** Best (always calibrated).

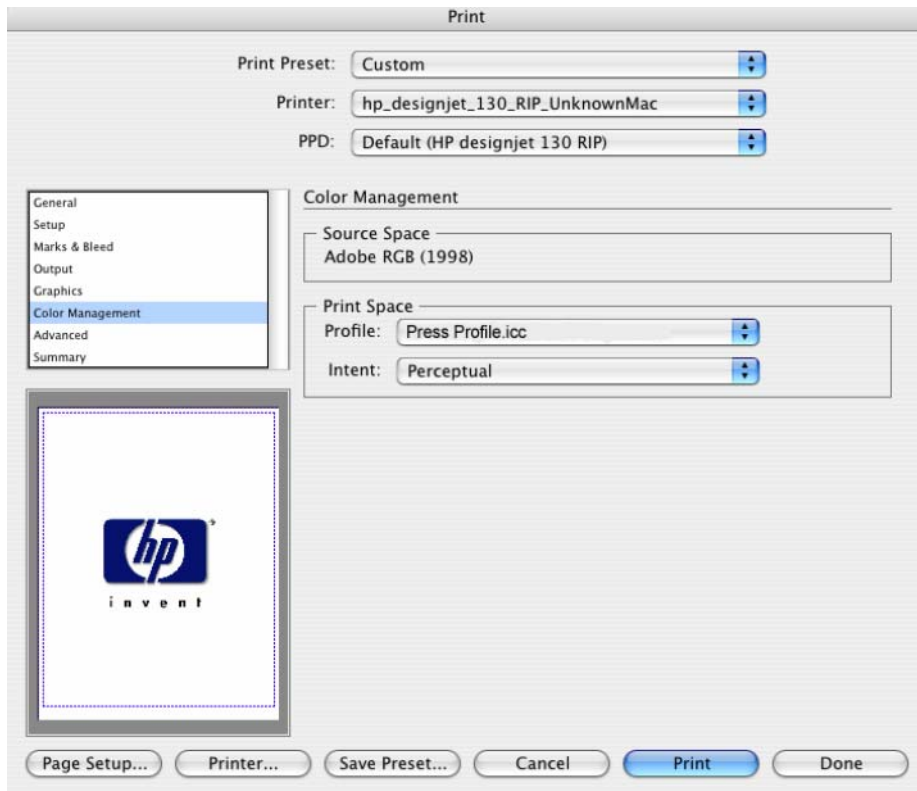


- **Color Options 1:**
 - Check **Perform Color Correction**.

- **CMYK Input Profile:** select the press profile you want to emulate, if you have added and selected it in the RIP, select **Use Default**.



- **Color Options 2:**
 - **Color rendering intent:** Relative Colorimetric (select Absolute Colorimetric if you want to emulate the white of the paper).
 - Click **Print**.
8. Adobe Illustrator **Print...** settings:
- **General** (left hand menu):
 - **Media > Size:** Defined by Driver.
 - **Options:** Select the scaling option you need.
 - **Output** (left hand menu):
 - **Mode:** Composite.
 - **Color Management** (left hand menu):
 - **Print Space > Profile:** Select the press profile you want to emulate.
 - **Print Space > Intent:** Perceptual (for RGB images) or Relative Colorimetric (for CMYK images).



- Click **Print**.

For more information on HP Designjet products

www.hp.com/go/designjet

© 2005 Hewlett-Packard Development Company, L.P. The information contained herein is subject to change without notice. The only warranties for HP products and services are set forth in the express warranty statements accompanying such products and services. Nothing herein should be construed as constituting an additional warranty. HP shall not be liable for technical or editorial errors or omissions contained herein.

Adobe Photoshop and PostScript are trademarks of Adobe Systems Incorporated. PANTONE is Pantone, Inc.'s check-standard trademark for color.

Rev. 1.0, 09/2005

