



Proof a press with CMYK

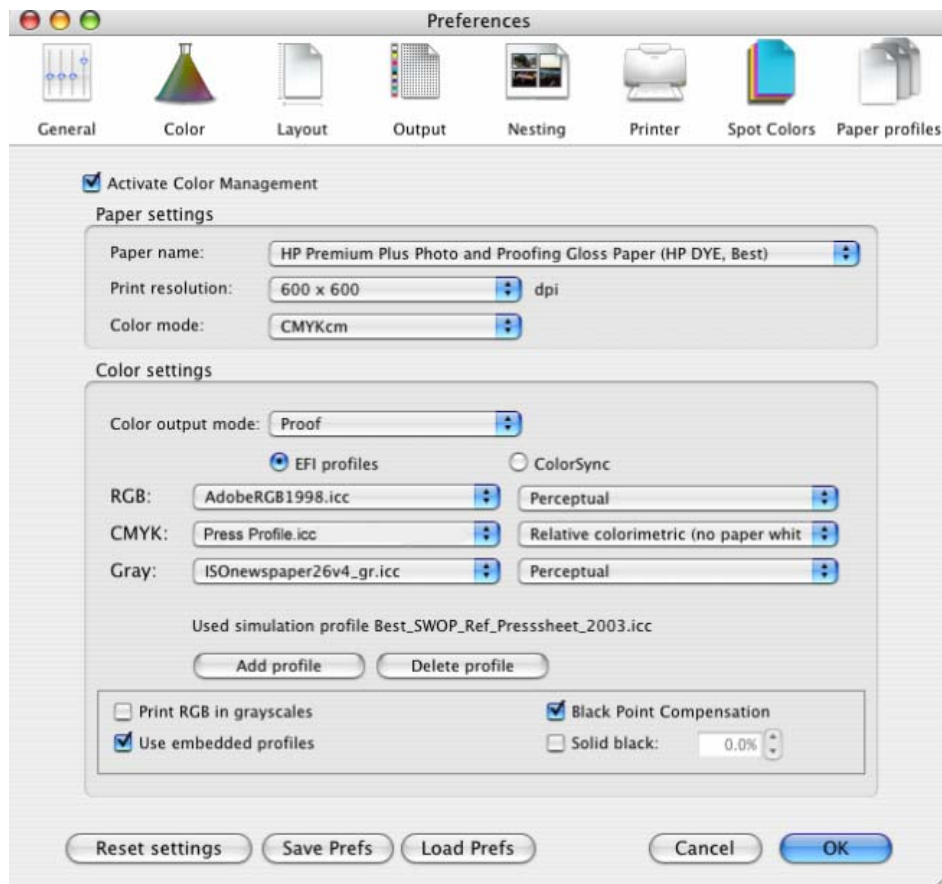
Application: Adobe Illustrator CS

Printer: HP Designjet 30/90/130 series

Software: EFI Designer Edition for HP

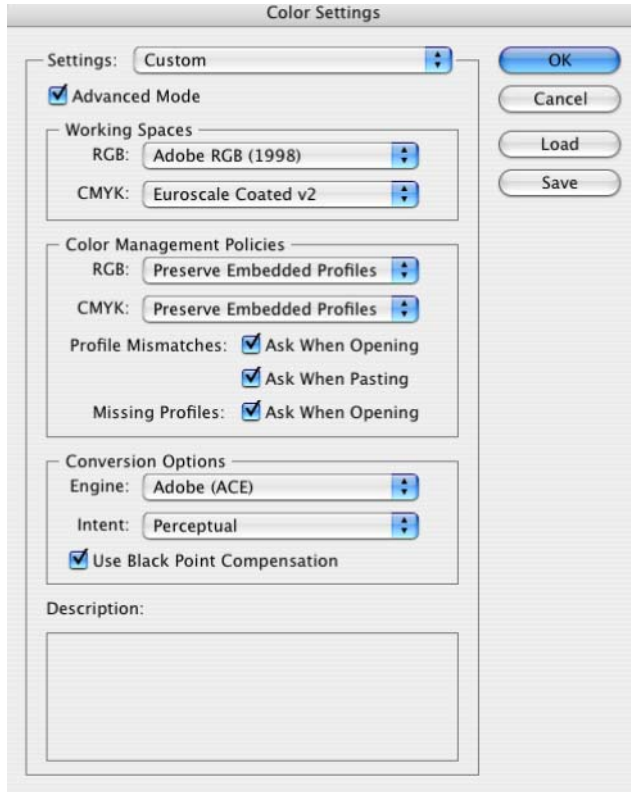
Operating System: Mac OS X

1. First recommendations:
 - Some paper types are better than others for proofing, see the [Media type functionality & features](#) and choose the most appropriate media.
 - It is essential to have the media type correctly calibrated with the printer and print mode, consult the [Calibrate my printer](#) section.
2. Open the EFI Designer Edition RIP.
3. EFI Designer Edition RIP settings, **Preferences**:
 - **Color**:
 - Check the **Active Color Management** checkbox.
 - **Paper name**: Select the paper type that is loaded on the printer (always calibrated) and “Best” print quality.
 - **Print resolution**: 600 x 600.
 - **Color output mode**: Proof.
 - **CMYK**: Select the press profile you want to emulate. If it is not there, click the **Add profile** button and browse it.
Select the **Relative Colorimetric** intent (select **Absolute Colorimetric** if you want to emulate the white of the paper).

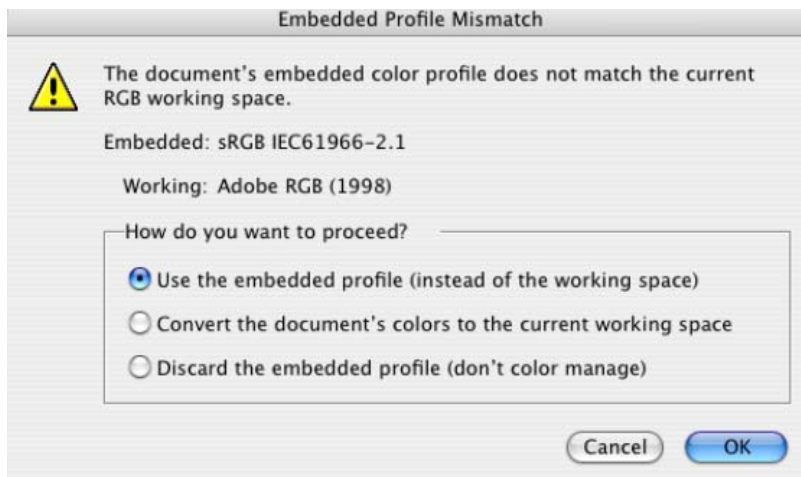


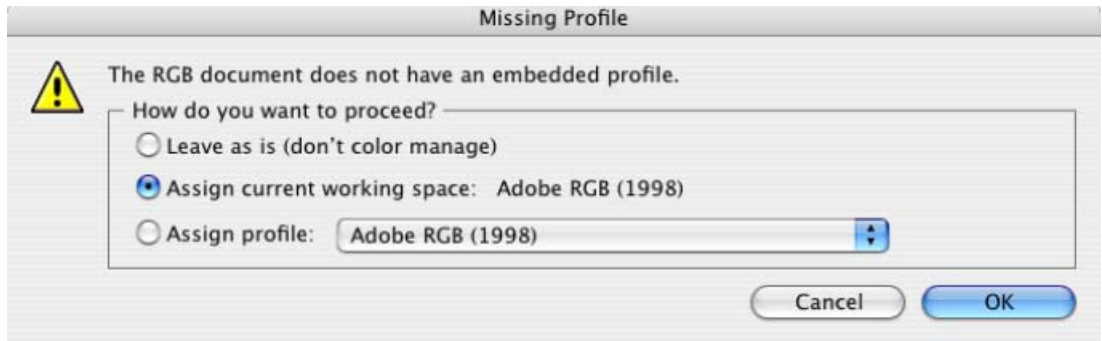
- Click **OK**.
4. Open Adobe Illustrator CS.
 5. Configure the **Color Settings, Edit menu > Color Settings...**:
 - Make sure the **Advanced Mode** check box is ticked.

- **Working Space > RGB:** select Adobe RGB (1998).
- **Working Space > CMYK:** Euroscale Coated v2 (for Europe), U.S. Web Coated (SWOP) v2 (for US) and Japan Standard v2 (for Japan).
- **Color Management Policies:** Preserve the Embedded Profiles.
- **Profile Mismatches:** check **Ask When Opening** and **Ask When Pasting**.
- **Missing Profiles:** check **Ask When Opening**.
- **Conversion Options > Intent:** Perceptual (for RGB images) or Relative Colorimetric (for CMYK images).

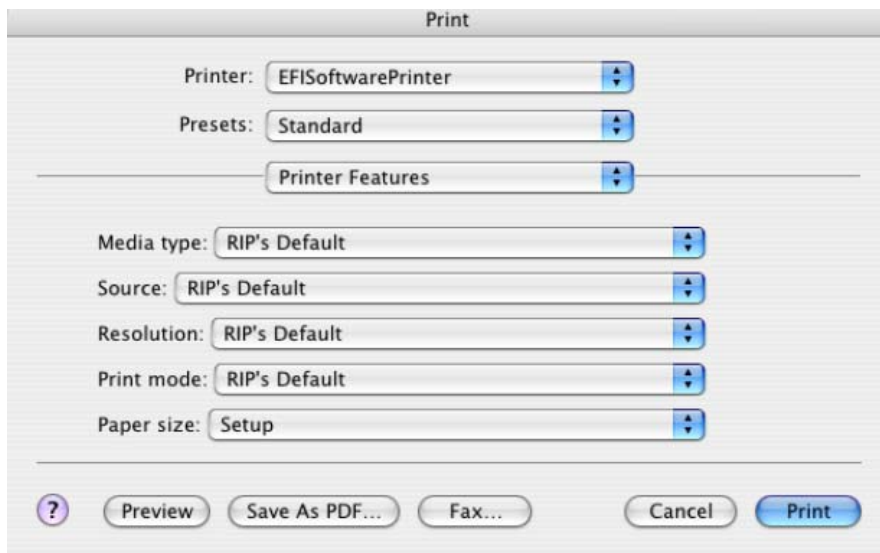


- Click **OK**
6. Open the image, **File menu > Open...**:
- If the document has an embedded color profile that does not match the current working space, select **Use the embedded profile**. Otherwise, select **Assign working space**.



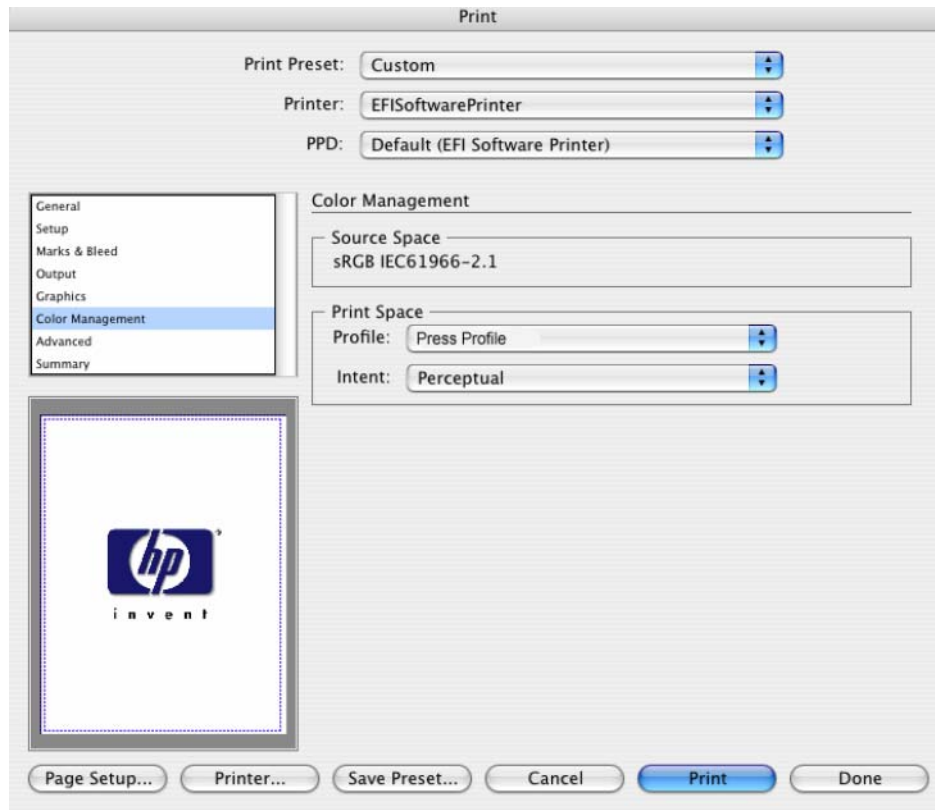


- Click **OK**.
- 7. Make sure you have configured the **Document Setup** appropriately for your document, **File menu > Document Setup...**
- 8. Printer Settings, **File menu > Print...**:
 - **Printer:** Select the printer (ex. EFI Designer Edition).
 - **Page Setup...**:
 - **Format for:** Select the printer.
 - **Paper Size:** Select the paper size of the media loaded on the printer.
 - **Orientation:** Select the orientation of your image on the paper.
 - Click **OK**.
 - **Printer...** button:
 - **Printer Features** (Mac OS X v10.3):
 - **Paper Size:** Setup.
 - Select **RIP's Default** on the others settings.



- Click **Print**.
- 9. Adobe Illustrator **Print...** settings:
 - **General** (left hand menu):
 - **Media > Size:** Defined by Driver.

- **Options:** Select the scaling option you need.
- **Output** (left hand menu):
 - **Mode:** Composite.
- **Color Management** (left hand menu):
 - **Print Space > Profile:** Select the press profile you want to emulate. If you need to add the press profile in the application, copy it to the following folder:
/Library/ColorSync/Profiles
 - **Print Space > Intent:** Perceptual (for RGB images) or Relative Colorimetric (for CMYK images).



- Click **Print**.

For more information on HP Designjet products

www.hp.com/go/designjet

© 2005 Hewlett-Packard Development Company, L.P. The information contained herein is subject to change without notice. The only warranties for HP products and services are set forth in the express warranty statements accompanying such products and services. Nothing herein should be construed as constituting an additional warranty. HP shall not be liable for technical or editorial errors or omissions contained herein.

Adobe Photoshop and PostScript are trademarks of Adobe Systems Incorporated. PANTONE is Pantone, Inc.'s check-standard trademark for color.

Rev. 1.0, 09/2005

