



Proof a press with Pantone Colors

Application: Adobe Photoshop CS

Printer: HP Designjet 30/90/130 series

Software: EFI Designjet Edition for HP

Operating System: Mac OS X

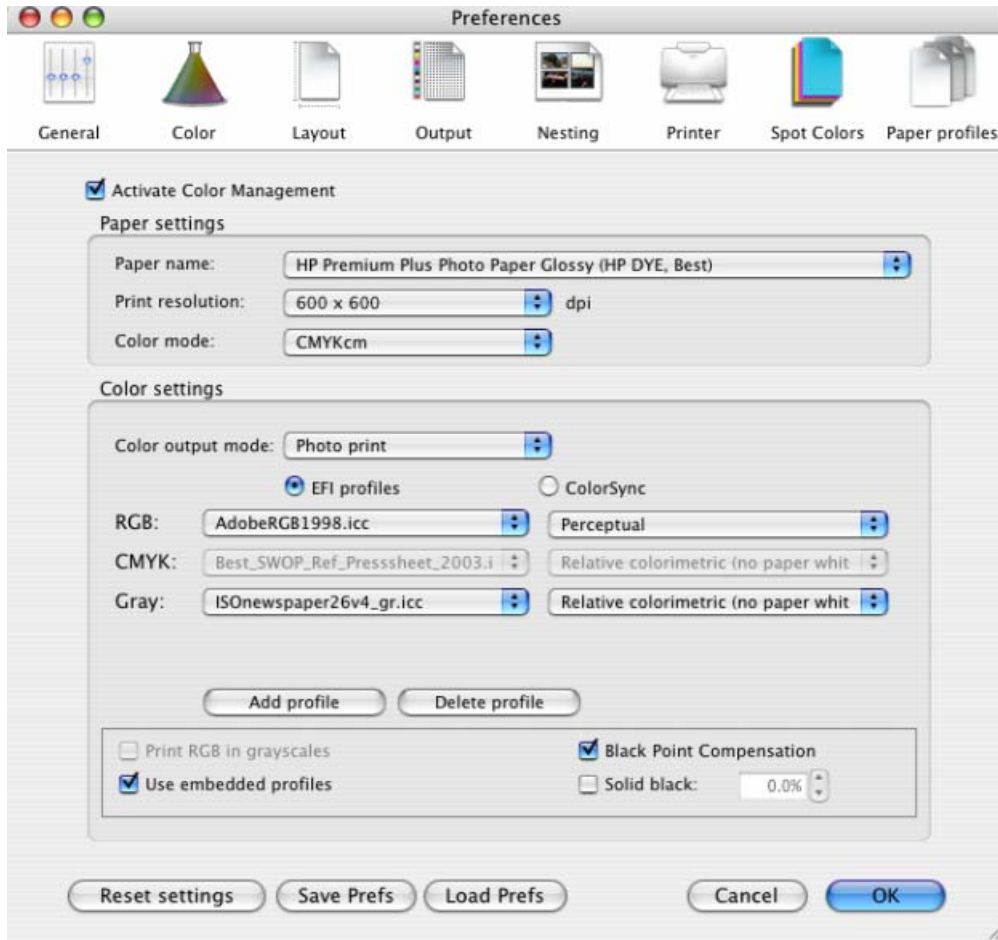
1. First recommendations:

- Some paper types are better than others for proofing, see the [Media type functionality & features](#) and choose the most appropriate media.
- It is essential to have the media type correctly calibrated with the printer and print mode, consult the [Calibrate my printer](#) document.

2. Open the EFI Designer Edition RIP.

3. EFI Designer Edition RIP settings, **Preferences**:

- **Color:**
 - Check the **Active Color Management** checkbox.
 - **Paper name:** Select the paper type that is loaded on the printer (always calibrated) and “Best” print quality.
 - **Print resolution:** 600 x 600.
 - **Color output mode:** Photo print.
 - You don’t need to worry about the profiles and rendering intent because you will select **Printer Color Management** option in the application, then, the application tells the RIP which source profile and rendering intent should be used for the conversion to the print space, these are the Document profile and the Print Space Intent of the application. The RIP color settings will be overridden.

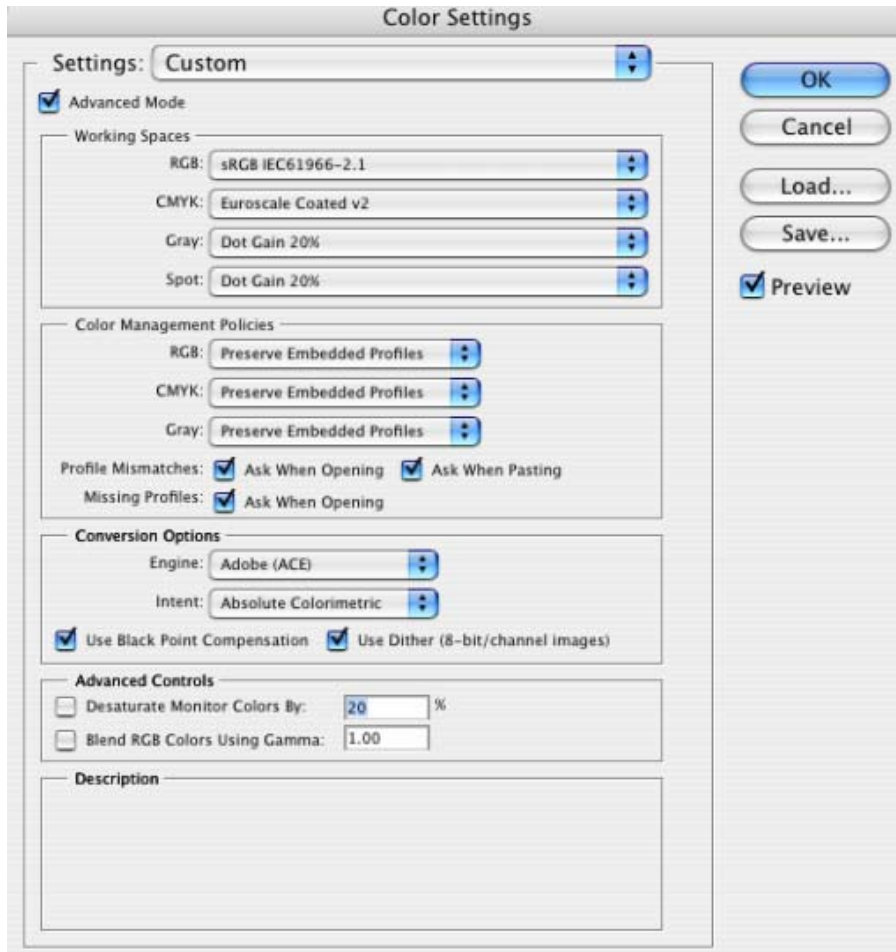


- Click **OK**.

4. Open Adobe Photoshop CS.

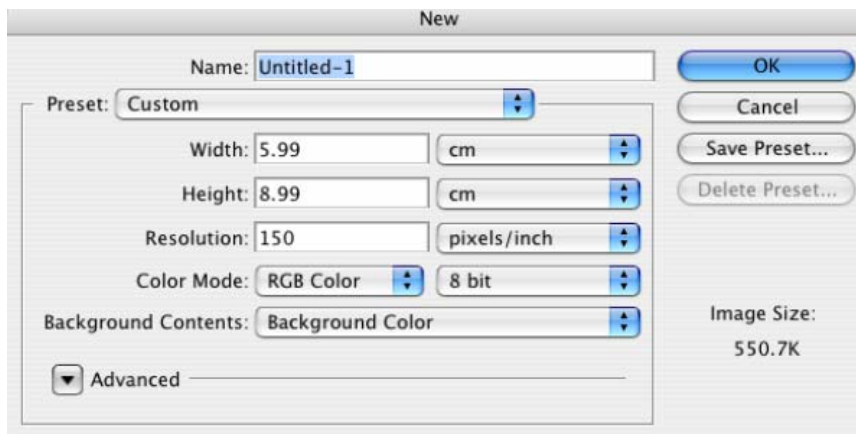
5. Configure the **Color Settings, Photoshop menu > Color Settings...**:

- Make sure that the **Advance Mode** check box is ticked.
- **Working Space > RGB**: sRGB IEC61966-2.1.
- **Conversion Options > Intent**: Absolute Colorimetric.



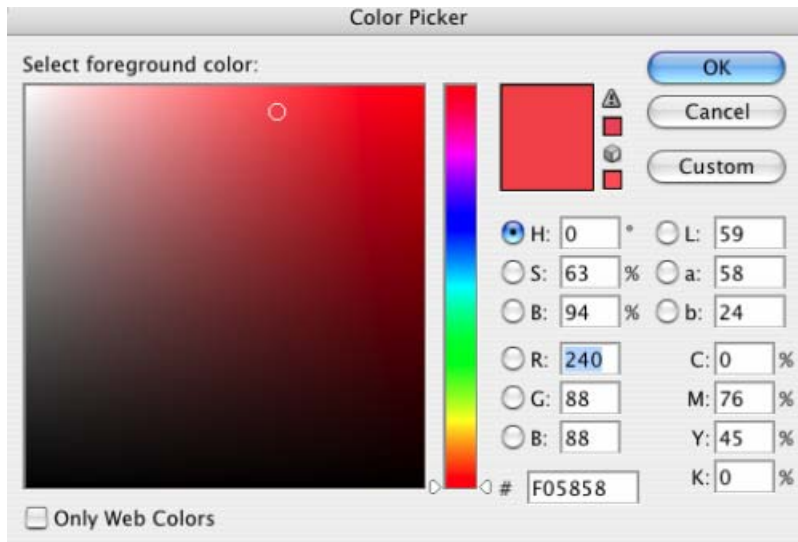
6. Create a new file in an RGB color mode, **File menu -> New...**:

- **Width, Height and Resolution**: select the image size and resolution you need.
- **Mode**: RGB Color

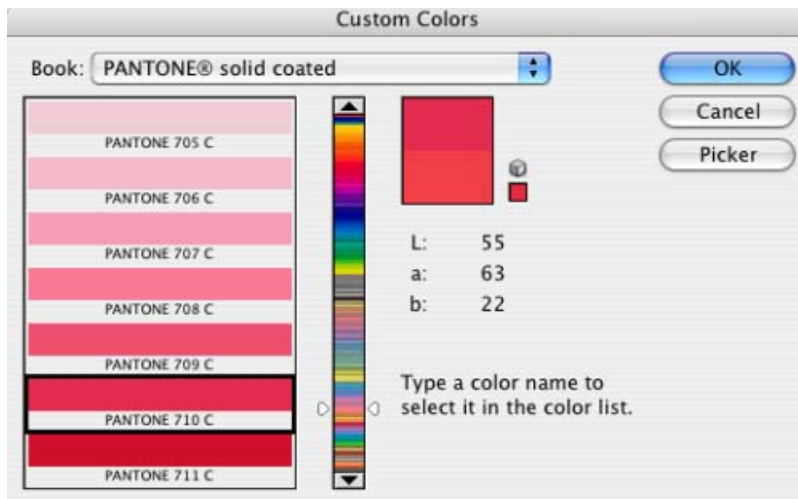


7. Select your Pantone Color and draw/paint your image:

- Double-click on the **color box** of the **Tools** window to open the **Color Picker**:



- Select **Custom** and open the **Pantone Solid Coated** book, now you can select the desired Pantone color.

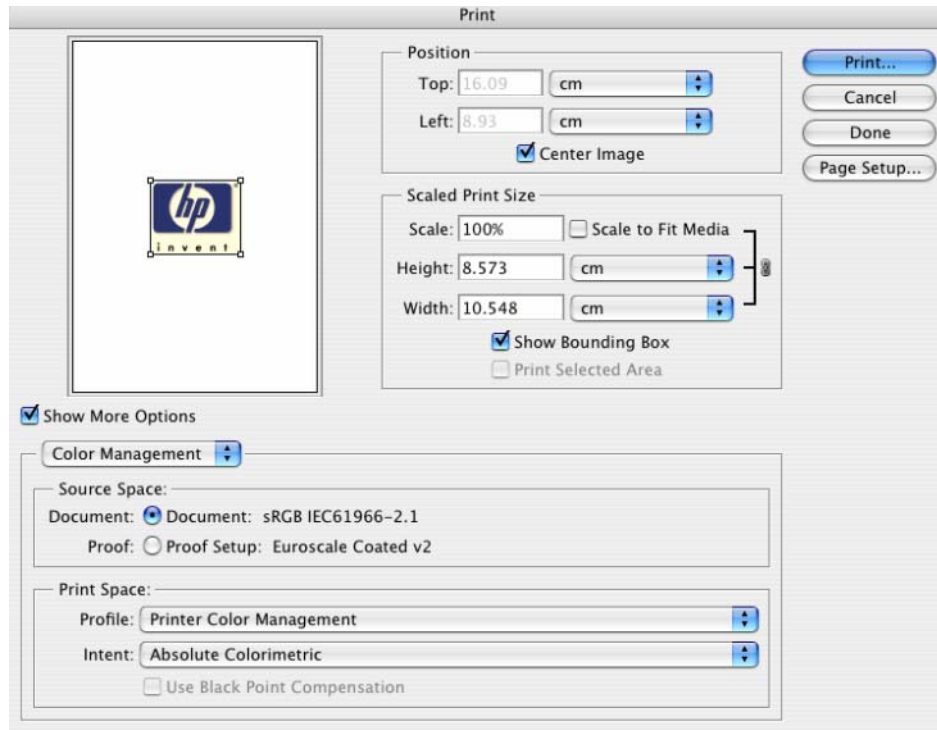


- Click **OK**. Now you can paint/draw.

8. Adobe Photoshop **Print with Preview...** settings, **File menu > Print with Preview...**:

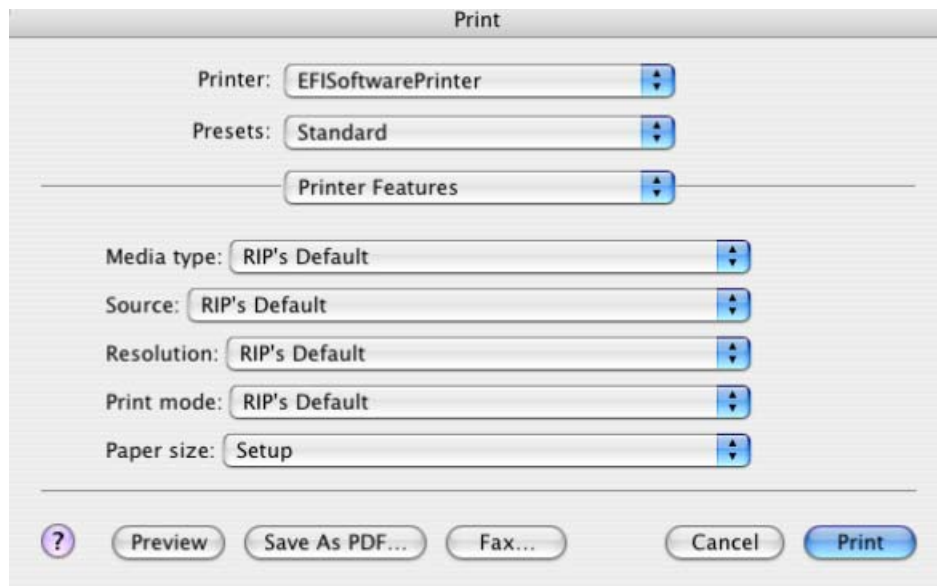
- **Page Setup...**:
 - **Format for...:** Select the printer (ex. EFI SoftwarePrinter).
 - **Paper Size:** Select the paper size of the media loaded on the printer.
 - **Orientation:** Select the orientation of your image on the paper.
 - Click **OK**.
- Set the **Position** and the **Scaled Print Size** you need.
- Check **Show More Options**.
- Select the **Color Management** tab:

- **Source Space:** Document.
- **Print Space > Profile:** Printer Color Management.
- **Print Space > Intent:** Absolute Colorimetric.



9. Print, **Print...**:

- **Printer:** Select the printer (ex. EFISoftwarePrinter).
- **Printer Features** (Mac OS X v10.3):
 - **Paper Size:** Setup.
 - Select **RIP's Default** on the others settings.



- Click **Print**.

For more information on HP Designjet products

www.hp.com/go/designjet

© 2005 Hewlett-Packard Development Company, L.P. The information contained herein is subject to change without notice. The only warranties for HP products and services are set forth in the express warranty statements accompanying such products and services. Nothing herein should be construed as constituting an additional warranty. HP shall not be liable for technical or editorial errors or omissions contained herein.

Adobe Photoshop and PostScript are trademarks of Adobe Systems Incorporated. PANTONE is Pantone, Inc.'s check-standard trademark for color.

Rev. 1.0, 09/2005

